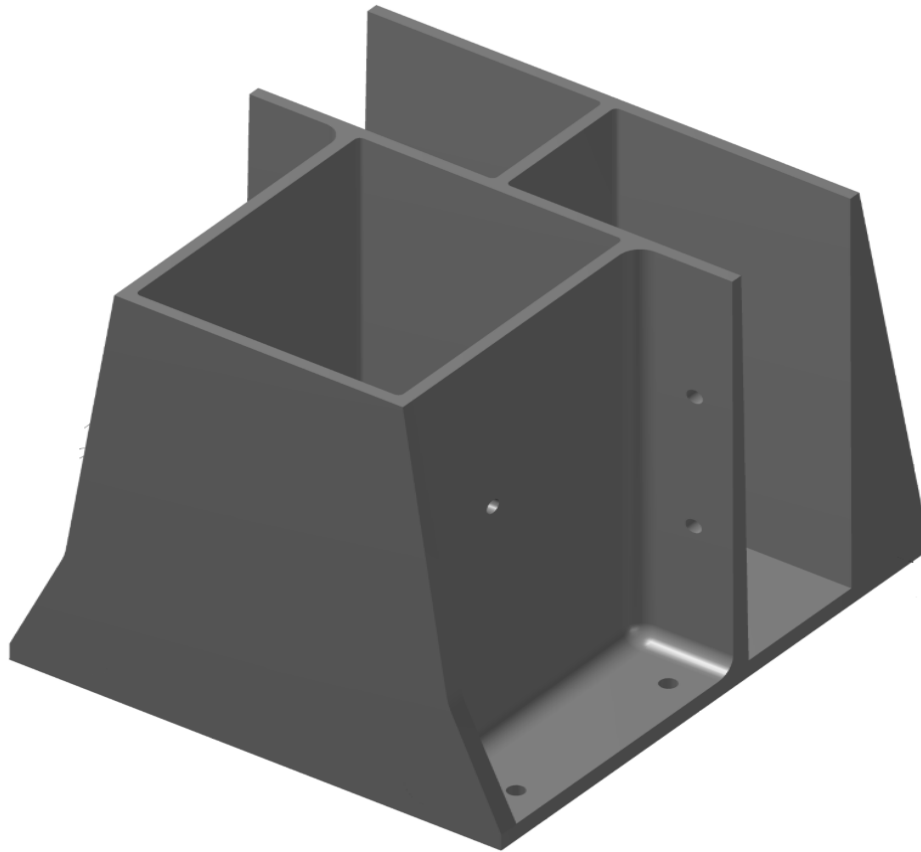


G – BOOT TEMPORARY FALL PROTECTION



TECHNICAL SUPPORT AND ORDERING

PLEASE PROVIDE THE INTENDED SUBSTRATE WHEN ORDERING,

440-796-8134

WWW.SAFETYKEVIN.COM

COPYRIGHT 2019 SAFETY KEVIN, LLC | VETERAN OWNED BUSINESS |
169 FAWN COURT WESTERVILLE, OH 43081

ALL FASTENERS ARE INCLUDED. USE THE ATTACHMENT PROVIDED FOR FAST INSTALLATION.

G – BOOT TEMPORARY FALL PROTECTION INSTRUCTIONS

Thank you for purchasing the G-BOOT temporary fall protection system. Below, you will find instructions on how to install the G-BOOT into various flat substrates. These instructions are intended to meet OSHA 1926.500 standards, which may be subject to change. It is the sole responsibility of the competent person to ensure the G – BOOT is installed properly and the substrate is suitable to withstand at least 200 pounds of force in an outward and downward direction. Always follow the specific safety regulations according to the local, state or federal safety-regulating agency.

The designated competent person shall ensure that each user reads and understands these instructions prior to use. Failure to understand and follow these instructions may lead to serious injury or death. The Manufacturer does not assume any liability in the event the G-Boot is installed improperly, misused, or the substrate to which the G-Boot is attached fails. Do not modify the G-BOOT. Always inspect each G-BOOT prior to installation for signs of damage including, but not limited to, cracks, excessive wear, degraded plastic or damage. Replace the G-BOOT IMMEDIATELY if any of these are present. Furthermore, do not place the G-BOOT in direct sunlight for more than 1 year. The G-BOOT is supplied with the fasteners needed to provide the required 200 pound 1926.500 OSHA guardrail requirements.

Each Party (the “Indemnifying Party”) agrees to defend the other Party, its affiliates and each of their respective officers, directors, employees, contractors and agents (each an “Indemnified Party”) from and against any action, claim, suit, investigation or other proceeding brought by a third party (a “Claim”) to the extent such Claim results from the Indemnifying Party’s breach of this Agreement or the negligence, willful misconduct or fraud or violation of law on the part of the Indemnifying Party, its officers, directors, employees, agents or other representatives in connection with this Agreement. The Indemnifying Party will indemnify and hold harmless the Indemnified Party from any liabilities, losses, damages, judgments, awards, fines, penalties, costs and expenses (including reasonable attorneys’ fees and costs of defense) incurred by or levied against such Indemnified Party as a result of such Claim. If the Indemnified Party seeks indemnification, with respect to a Claim, the Indemnifying Party’s obligations are conditioned upon the Indemnified Party: (a) providing written notice to the Indemnifying Party of any Claim within thirty (30) days after the Indemnified Party has knowledge of such Claim (except that failure to timely provide such notice will relieve the Indemnifying Party of its obligations only to the extent the Indemnifying Party is materially prejudiced as a direct result of such delay); (b) giving the Indemnifying Party sole control over the defense thereof and any related settlement negotiations; and (c) cooperating and, at the Indemnifying Party’s request and expense, assisting in such defense. Notwithstanding the foregoing, the Indemnified Party may participate at its own expense in the defense and any settlement discussions, and will have the right to approve any settlement agreement that involves an admission of fault by the Indemnified Party or imposes non-monetary obligations on the Indemnified Party; provided, however, that such approval will not be unreasonably withheld.

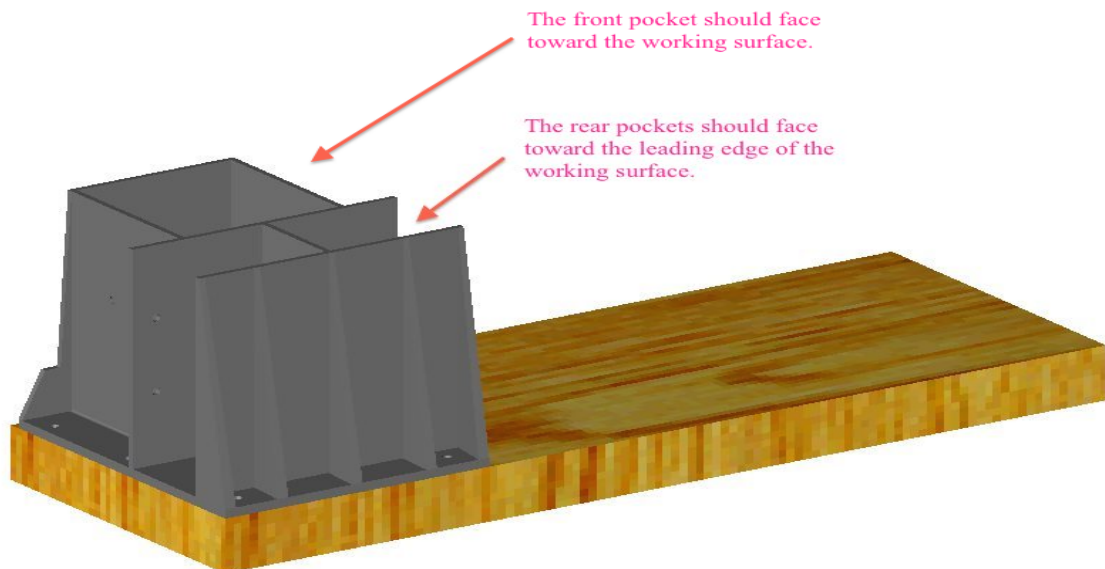
INSTALLATION INSTRUCTIONS

It is the sole responsibility of the competent person to ensure each user has read and understands the following installation guidelines. Failure to read and understand these instructions could lead to serious injury or death. Furthermore, neglecting to use the supplied fasteners may result in premature failure, leading to serious injury or death. Always verify through a qualified engineer that each substrate and fastener used to install the G-BOOT meets the specific load requirements needed for each specific application.

1. Prior to installing the G-BOOT, the competent person shall inspect the work area and determine if additional fall protection, including but not limited to, an anchor capable of withstanding 5,000 pounds, a full body harness and either a rope with rope grab or retractable, is needed to properly install the G-BOOT. The manufacturer does not assume responsibility for any OSHA fines or other indemnity, incurred due to the failure of the competent person to require additional fall protection when installing the G-BOOT. According to OSHA, the designated competent person shall ensure that a user may not fall or swing more than six feet; in the event of a fall.

2. Ensure that that wood nailer or substrate is properly installed per the scope of work. If there is no scope, it is recommended that the wood nailer is installed in accordance with FM guidelines. When attaching the G-BOOT directly to 22 gauge or thicker metal deck, a toggle bolt is required. Always use the correct fasteners for the substrate. Failure to use a toggle bolt with metal decks may result in premature failure of the G-BOOT, resulting in serious injury or death.

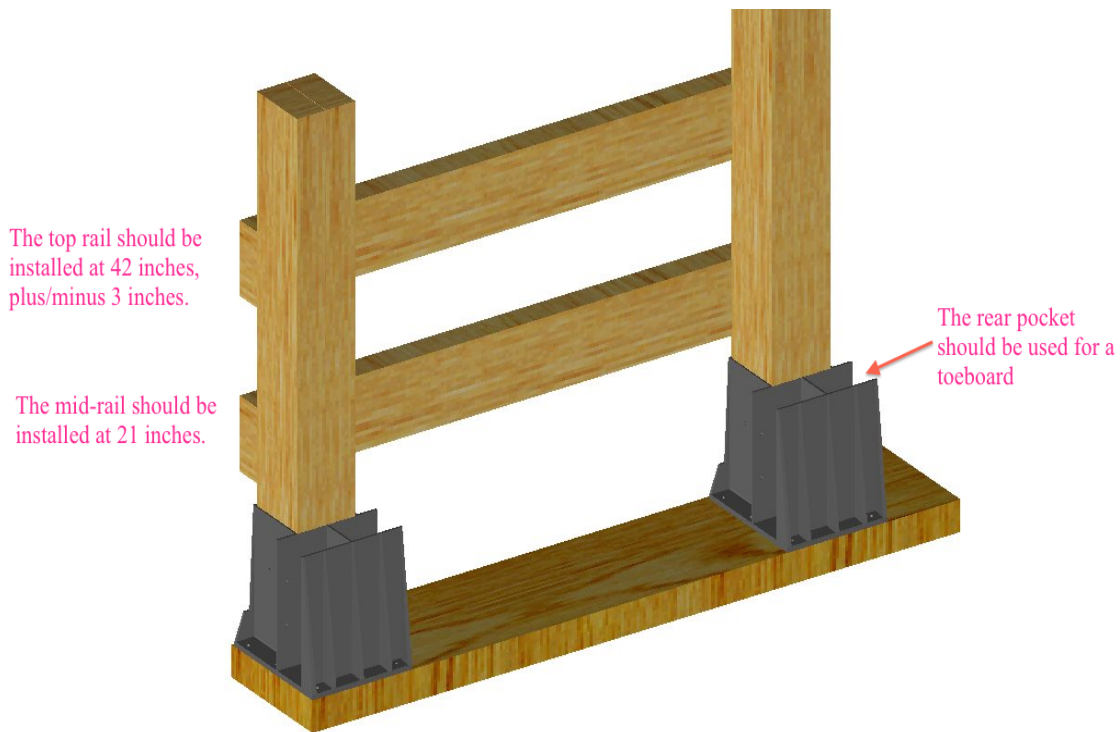
With the front pocket facing the working surface, place the bottom of the G-BOOT on the wood nailer. Install all six screws through the G-BOOT, into the wood nailer and metal decking. Do not use an impact when installing. Premature screw failure may cause a serious injury or death.



INSTALLATION INSTRUCTIONS

2a. Cut two (2) 2x4 construction grade lumber posts at 42 inches. Screw each piece of lumber together. Insert the post into the front pocket, to create a post and secure the post with a one-inch wood screw. **INSTALL EACH BOOT TO ENSURE THE MAXIMUM SPACING IS 8 FOOT, ON CENTER.** Failure to ensure proper spacing may lead to premature failure of the G-BOOT, resulting in serious injury or death.

2b. Install the top rail at 42 inches above the working surface (OSHA allows 42 inches plus or minus 3 inches above the working surface). Mid-Rails shall be installed 21 inches above the working surface. When terminating the guardrail, do not leave the railings extend past the final post, to prevent the user from being struck by the railing. Follow OSHA's 1926.502 standard for Guardrail systems and practices for the proper termination of the top rail and mid-rail near a permanent wall structure.



3. When attaching the G-BOOT directly to 22 gauge or thicker metal deck, a toggle bolt is required. Always use the correct fasteners for the substrate. Failure to use a toggle bolt with metal decks may result in premature failure of the G-BOOT, resulting in serious injury or death.

INSTALLATION INSTRUCTIONS

4. For other applications, the G-BOOT shall be installed in accordance with the manufacturer's instructions. Any modifications, additions or alterations is not recommended unless the designated competent person, safety engineer or other safety professional verifies that the entire system is capable of withstanding the intended load needed for the specific application.

5. When installing onto concrete substrates, several factors to consider are concrete mixtures, applications, cure times, concrete thickness, psi strength and mixture type. The designated competent person on a per case basis shall evaluate concrete fasteners used to secure the G-BOOT. Failure to evaluate each case may lead to a premature failure of the G-BOOT leading to serious injury or death. The competent person shall ensure that the concrete fasteners meet the pullout value and shear strength requirements in accordance with OSHA's required strength standards. Most fasteners include product data that identifies these values in both concrete and hollow core block applications. Refer to OSHA's 1926. 503 (b)(3) standard, for guardrail strength test requirements.

TECHNICAL SUPPORT AND ORDERING

PLEASE PROVIDE THE INTENDED SUBSTRATE WHEN ORDERING,

440-796-8134

WWW.SAFETYKEVIN.COM

COPYRIGHT 2019 SAFETY KEVIN, LLC | VETERAN OWNED BUSINESS |
169 FAWN COURT WESTERVILLE, OH 43081

