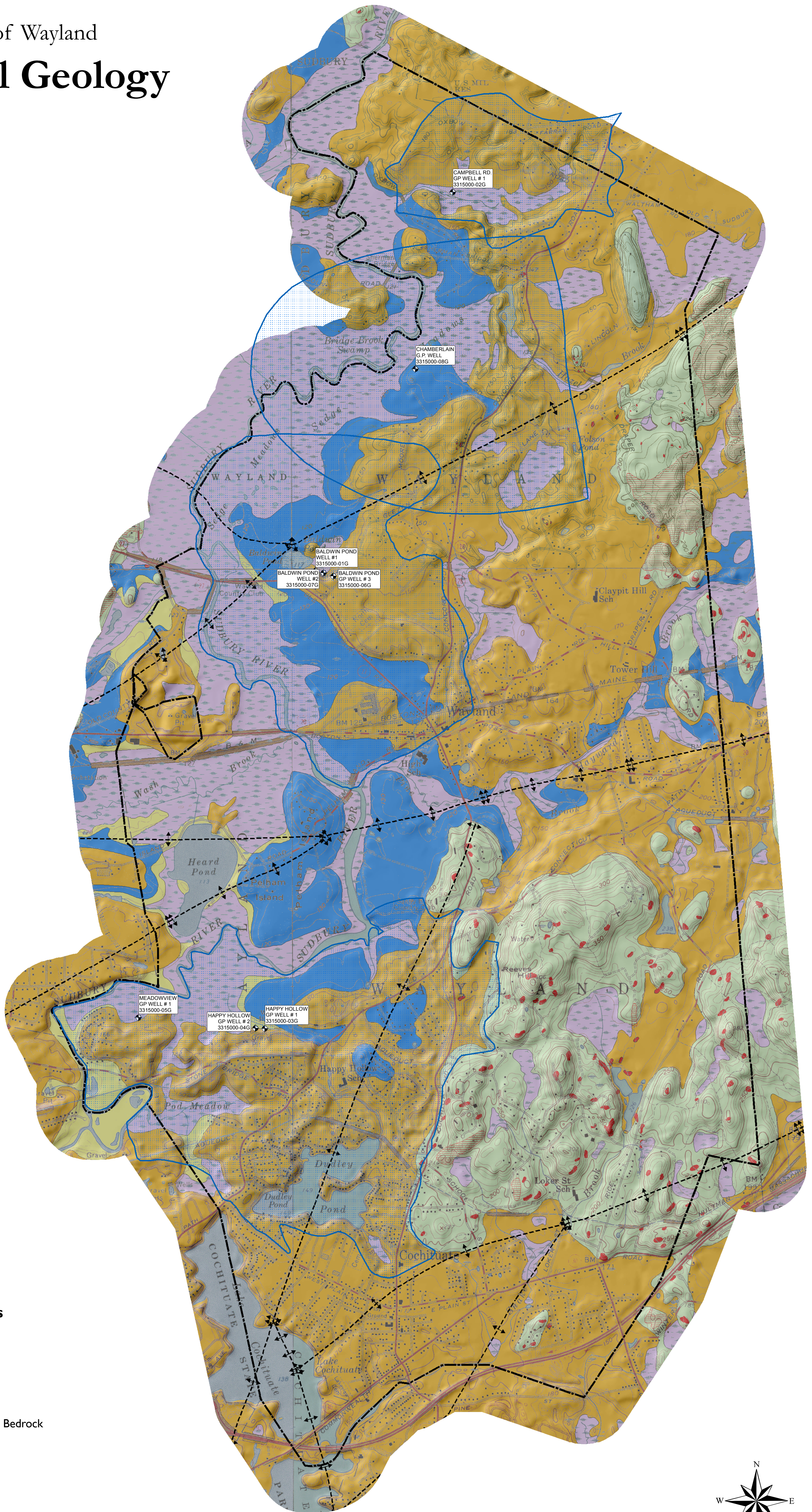


Town of Wayland

Surficial Geology



Postglacial Deposits

- Artificial Fill
- Postglacial Deposits**
- Beach and Dune Deposits
- Floodplain Alluvium
- Salt Marsh Deposits
- Swamp Deposits

Early Postglacial Deposits

- Marine Regressive
- Inland Dune

Glacial Stratified Deposits

- Coarse
- Glaciolacustrine Fine
- Glaciomarine Fine

Shallow Bedrock

- Abundant Outcrop and Shallow Bedrock

Till Bedrock

- Thick Till
- End Moraine Deposits
- Bedrock Outcrop
- Thin Till

- Public Water Supply Well
- Fault
- DEP Approved Zone II

