



Countryside Hospice Support & Memory Center

415 S. Crow St., Pierre, South Dakota 57501

Phone: (605) 945-0827

July 2019



Dakota Radio Group has teamed up with Darren Boyle Sales, Avera St. Mary's Foundation and the Countryside St. Benedict's Guest House to bring another great contest to Central South Dakota!

Someone will win a pink Bush Hog zero turn, 55" deck mower, valued at over **\$7,000!** And it's **PINK!!**

The mower will be given away on August 20th in the Helmsley Center garden area.

Here are the registration locations:

In Pierre:

East Pierre Garden Center

Cell Savers

The Heritage Store

Pierre Sports Center

Cell Only – Verizon

McDonald's

In Fort Pierre:

Prairie ATV & Cycle

Dakota Prairie Bank

Shane's Pharmacy

In Gettysburg:

Gas N' Goodies

Stan's C-Store

In Chamberlain:

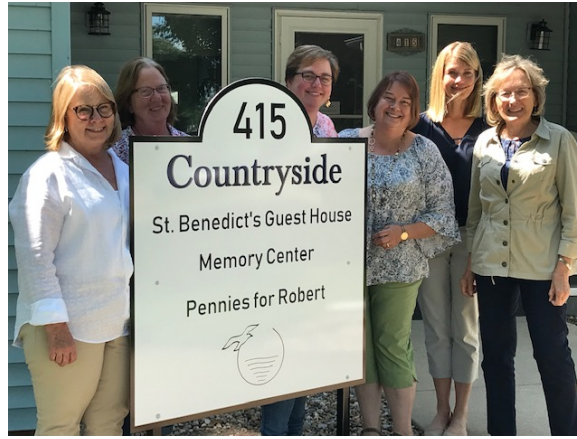
Anchor Grille

On August 20, semi-finalists from each location will receive a 4 digit code. If your code starts the mower, you are the winner!

St. Mary's Foundation is also drawing a semifinalist's name - anyone who donates a minimum of \$50 to Avera St. Mary's Foundation and St. Benedict's Guest House will have their name entered into a drawing and one name will be selected to qualify for the Grand Prize drawing. Donations may be made to St. Mary's Foundation or through their online donation site <https://www.crowdrise.com/o/en/campaign/clip-cancers-grass>.

Clip Cancer's Grass is also sponsored by BankWest, Pierre Family Dental and the Dallas Heninger Memorial Bull Riding.

Did we mention that the mower is PINK??? Sign up today and good luck!



St. Benedict's Guest House update

Well, we have the office and Memory Center moved. The sign is up outside, our offices look wonderful and even the conference room is emptied and ready for the first memory screen in our new location. Our team is not only great at their day jobs but do a fine job of cleaning, organizing and decorating!

Our focus now is on the Guest House. With 6 large guest rooms, baths, living and dining area, kitchen and laundry there is much to do. All of the basics are in place and now it is a matter of updating and furnishing it to be as welcoming as possible.

Thank you for making such a nice dent in our wish list – we still have items that are needed including:

\$250 – provides a full set of linens for a room – we need 2 full sets for each room (8 needed)

\$ 300 - provides additional items for a room – TVs, lamps, etc.

\$ 300 – provides window coverings for a room (6 needed)

\$ 400 – will paint the kitchen

\$2,500 – floor coverings (2 needed)

\$ 100 a month will provide cable TV

Donors may also choose to sponsor a night's stay at the house (\$50) or a week (\$200) or a month (\$800).

Q. Who will be able to stay at St. Benedict's Guest House?

A. Cancer patients receiving treatment at the Helmsley Center will be eligible. This includes patients coming for 6 -7 weeks of radiation, patients receiving chemo or having surgery. Patients may stay for several days, weeks or just a night or two.

Q. How will patients find out about the Guest House?

A. All patients must be referred through the Social Worker at Avera St Mary's. No walk in or phone registrations will be accepted. There will be house rules and certain criteria the patients must meet.

Q. What if the house is full?

A. Patients who need assistance with lodging will still be able to access the Pennies for Robert program. So, if for any reason they are not able to stay at the guest house, we will still help them.

Countryside Breast Cancer Survivors

Please note the August dates for meetings – we will return to our usual meeting time of the first and third Thursday at noon in September

No meeting August 1 – ACS will be hosting their annual Relay for Life from 4-10 pm at the Expo Center in Fort Pierre – all Breast Cancer Survivors are welcome to join the ***SHE*** (Sharing Her Experience) team sponsored by Countryside for the survivor's walk which begins at 5:30 pm.

Tuesday, August 20 at noon – Myrna Buckles will be helping members of the group create squares for the cancer survivor's quilt which will be hung in the Helmsley Center. Myrna will bring all materials needed but has requested that participants send her any words/logos etc. that are key to your survivorship and she will try to work them into a square for you. You can contact Myrna at 222-6847. This should be a fun meeting and no sewing is required! We invite all Breast Cancer Survivors to attend this meeting.

Countryside Dementia Care Partners Support Group **August 15 at 6 pm – 415 S. Crow Street**

A confidential group for anyone who cares for a loved one with dementia including the primary caregiver, family members and friends. This group provides support, education and resource information and is open to new participants at any time. For more information call 945-0827.

Avera St. Mary's Men's Cancer Support

August 16 at noon (3rd Friday of the month)

Helmsley Center Cafeteria conference room - for men who have any type of cancer.

For more information call Terry Pfahler 224-3100 or teresa.pfahler@avera.org

Avera St. Mary's Women's Cancer Support

August 9 at noon (2nd Friday of the month)

Helmsley Center Cafeteria conference room

This group is open to women of all ages who are dealing with any type of cancer.

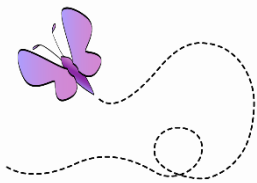
For more information contact Terry Pfahler 224-3100 or teresa.pfahler@avera.org

Mabel's Family Support Group:

Wednesday, August 7 at noon

Edgewood Senior Living – 1950 E. Fourth St

An opportunity to learn, share your knowledge, plan for the future and support one another.



Avera @ Home Hospice Memorial Butterfly Release

The Avera St. Mary's Foundation and Avera@Home will be hosting a Memorial Butterfly Release at 5:30 p.m. on Thursday, August 8 in the garden space between Parkwood and Avera Maryhouse 717 E. Dakota.

You may reserve as many butterflies as you like, with each being in memory of one person. There is a donation of \$25 each. All proceeds of the Memorial Butterfly Release will be used to continue providing quality, compassionate hospice care in our region through the Avera@Home – Pierre Fund.

Reserve your butterflies by contacting Sherri Shaffer at Sherri.Shaffer@avera.org or 605-224-3218. Reservations are due by August 1.

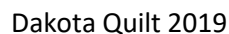


Saturday September 14, 2019 139 mile Motorcycle and Car Dice Run Registration 11am at the Izaak Walton

50/50 drawing Silent Auction Meal at completion of run Dakota Quilt Raffle drawing

\$20 per hand – prizes for top three & low totals

For more information: Marc – 222-6727 or Marlin – Street Masters - 222-9437



This quilt created by Sarah Gallagher measures 85"x103" and features 17 colorful t-shirts from Harley dealerships in North and South Dakota. The quilt will be on display at various locations between now and rally day and we have a large color poster in the office for you to view. You really have to see it to appreciate the workmanship and design. Tickets are \$5.00 or 6 for \$20 and are available at Petersen Motors and the Countryside office. They will also be available on the day of the rally and the winner will be drawn after riders return to the Ike's – you do not have to be present to win.

All proceeds benefit Pennies for Robert travel funds for cancer patients



Representatives from Avera St. Mary's and St. Mary's Foundation joined the Countryside Board of Directors and staff to celebrate the official agreement that makes St. Benedict's Guest House a reality.

This was truly a joint venture that had wonderful momentum from the onset and never slowed until the finish line!

Now on to the next phase!

Pennies for Robert

\$10,270 in travel funds provided in June 2019. That means in the past three months you have helped sponsor **256** trips for cancer treatment and provided **\$31,495** in funds.

Thank you never quite seems like enough....

Thrift Store update...

July is the 24th anniversary of the Hospice Thrift Store. What started as an idea to help supplement our many fund raisers in the 90's has grown to a business that provides 85% of our program funding.

During the month of July we will have several special sales to celebrate – stop by often and watch our Facebook page so you don't miss any of them!

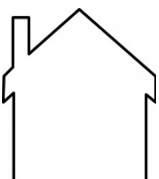
Thank you to all our staff, volunteers, donors and customers who help make the thrift store possible.



Thank you to Gateway Ford-Lincoln, Toyota ...

During the month of May, Gateway donated \$50 for every car sold. Gateway sold cars, people are driving around in something new and spiffy, and St Benedict's House has flooring for one of the patient rooms! That's a win/win/win!

Thank you, Gateway!



St. Benedict's Guest House Donations...

Anonymous, Gwen Candee, Degrey Helping Hand Club, Lee & Beth Dyer, Julie Ellingson, KayCee Hodson, Dr. Mikel & Deborah Holland, Mark & Kristen Lawrensen, Ron & Linda Olinger

In memory of Wanda Ness Trimble and John Hines by Bob & Jody Hardwick

Countryside memorials...

Susan LeDuc
Dr. B.O. Lindbloom
Irene Wald
Pam Templeton
Sharla Garrett
Jenny Wegner
Susan Mollison
Jerry Potts
Jo Chandler
John Stengle
Andy Schultz
Buddy Welch
Larry O'Daniel
John Miller
Dr. Gerald Herrin
Ron Klucas
by
Jim & Rosa Iverson

Carol Fiala
by
Gary, Debbie & David Fiala

John & Anne Woods
Burton & Anna Warne
Jack Fifield
by
Maynard & Mary Greenfield

Bernice Huber
by
Juanita Huber
Uncle Matt

Bernice Huber
Susan Mollison
by
Cathy Peitz

Donna Rankin
by
Michelle Baack

Eldon Huber
by
Curt & Mary Lou Goehring

Kathy Fischer
by
Jerry Lundberg
Rose Vice

Keith Onken
by
Jerald Bronemann

Jack Soesbe
by
Jenelle Busse

Wanda Trimble
by
Scott & Gaye Granville

Bonita Reynolds
by
Bob & Glynnes Sargent

Rodger Pearson
Pam Templeton
Doris Meyer
Susan Mollison
Kevin Kusler
Connie Tinker
Bonnie Aasby
Jo Chandler
by
Gerald & Nancy Cutshaw

Evalyn & Laurence Holan
Lynette Leiferman
by
Judene Holan

Vern Bak
by
Orv & Mary Jo Gran

Lois Van Ash
by
Don Sandal



Wanda Trimble
Edna McCan
by
Frieda Baker

Wanda Ness Trimble
by
James & Joan Likness

Doug Hageman
Donna Rankin
by
Rhonda Kirsch

Agnes Deal
by
Family & Friends

Bonnie Aasby
Donna Rankin
by
Frank & Carol Newcomb

Wanda Trimble
Hertha Gross
by
Wahneta Schweigert

Barb Spears
Bill Spears
by
Roger & Suzanne Pries

Hertha Gross
Mansour Karim
by
Verne & Frieda Baker

Hertha Gross
Mansour Karim
by
Mark & Denise Venner

Burt Lounsbury
Judy Maxwell
by
Roger & Marla Fuller

Memberships: Don & Donna Gallimore, Lynn & Joyce Goehring, Billy & Arlyne Markwed, Doug & Clarie Marsh

Donations: Verne & Frieda Baker, June Kilian, Doug & Clarie Marsh

In Honor of St. Mary's Auxiliary – 98 years of service. You will be missed! Anonymous donor

In Loving Memory of ...

Marcia Burrows <i>John</i> <i>Janet – Deb – Susan -</i> <i>Dawn</i>	<i>My mother,</i> Billie Busse <i>by</i> <i>Ed Rodgers</i>	Carol Fiala <i>We miss you -</i> <i>Mark & Deb Wixon</i>	Linda Obermeier <i>We miss you pretty girl!</i> <i>Pete, Tammy, Aimee,</i> <i>Joey, Amanda, Sawyer,</i> <i>Axton & Jermei</i>
Marie Lamm <i>Bob & Beth McInnis</i> <i>Susan & Bob Marrington</i> <i>Ralph Dirksen</i> <i>Joe & Kathy Gittings</i>	Darlene Treib <i>Bob & Beth McInnis</i> <i>Sam Treib</i> <i>Susan & Bob Marrington</i> <i>Ralph Dirksen</i> <i>Joe & Kathy Gittings</i>	Orma E. McInnis <i>Bob & Beth McInnis,</i> <i>Sam Treib,</i> <i>Susan & Bob Marrington,</i> <i>Kathy & Joe Gittings</i> <i>& Ralph Dirksen</i>	John McInnis <i>Joe & Kathy Gittings, Susan</i> <i>& Bob Marrington, Bob &</i> <i>Beth McInnis,</i> <i>Sam Treib,</i> <i>& Ralph Dirksen</i>
Theron Johnson <i>on his birthday</i> <i>July 6th</i> <i>Love and miss you.</i> <i>Avys Johnson</i> <i>&</i> <i>Your Family</i>	<i>In loving memory of our grandson,</i> Dalton Williams <i>on his birthday, July 22nd</i> <i>You are forever in our hearts!</i> <i>Love and miss you every day.</i> <i>Grandma Jody and Grandpa Cody</i>		Shirley Fosheim <i>on her birthday, June 26th</i> <i>Your presence we miss,</i> <i>Your memory we treasure,</i> <i>Loving you always,</i> <i>Forgetting you never.</i> <i>Arlyne</i>
<i>My parents,</i> Lois and Justin Zickrick <i>by</i> <i>Mark & Danette</i> <i>Zickrick</i>	<i>My wife,</i> Jane Rausch <i>In memory of our wedding anniversary which would have</i> <i>been our 43rd on August 7, 2019!</i> <i>Miss you.</i> <i>Love, Ken</i>		<i>In loving memory of</i> Lee Roy Eisenbeisz <i>Happy Birthday</i> <i>July 13th</i> <i>Love,</i> <i>Irene</i>
David Keller <i>on his 58th birthday,</i> <i>June 30th.</i> <i>Your family misses you</i> <i>so much.</i> <i>Love always,</i> <i>Mom & family</i>	<i>In memory of our dear mother</i> <i>on the date of her death, July 3, 2015.</i> <i>Mom, we all miss you terribly, but we know your spirit</i> <i>remains with us.</i> <i>Love,</i> <i>Russ, Barb, Steve, Jamie, Bob & Kate</i>		<i>In loving memory of my</i> <i>mother, Joan Pottratz,</i> <i>on her birthday</i> <i>July 24th</i> <i>by</i> <i>Lynn Bixler</i>
<i>Our aunt,</i> Helen Quenemoen <i>by</i> <i>Steve & Julie Ellingson</i>	<i>Happy 23rd Birthday, Dalton</i> <i>We miss and love you</i> <i>my sweet Angel.</i> <i>Love,</i> <i>Mom, Dad, Cole, Shyanne, Kenya & Taya</i>		Richard "Dick" Allison <i>who died on</i> <i>July 20, 2006</i> <i>by</i> <i>John Allison & Family</i>

Avera@Home Hospice

Jo Chandler
Verne Bak
John Lee
 by
 Dennis & Shirley Eismach

Dr. B.O. Lindbloom
 by
 Karen Lindbloom

Bernice Huber
John Hines
 by
 Bob & Shirlee Miller

Donna Rankin
Hertha Gross
Michael Youngberg
 by
 Dennis & Shirley Eismach

Countryside Hospice Support & Memory Center
415 S. Crow St.
Pierre, SD 57501

Return Service Requested

NON-PROFIT
ORG.
U.S. Postage
PAID
Pierre, SD 57501
Permit No. 76

We Care Program – Lynn’s Dakotamart

Thank you to Lynn’s Dakotamart for this wonderful community program. For every \$10,000 we collect in receipts Lynn’s donates \$100 to Countryside. Please save all your receipts – every department counts including gas, pharmacy, food, clothing, and sporting goods.

THIS GIFT IS FROM:

Name _____

Address _____ Phone _____

PLEASE USE MY GIFT FOR:

☐ Memorial ☐ Memory Center ☐ Membership ☐ Avera@Home ☐ Pennies for Robert ☐ St. Benedict’s Guest House
Hospice care Cancer patients’ travel Lodging for cancer patients

MY GIFT IS:

In Memory/Honor of _____

Please Notify _____

I would like to charge \$_____ to my credit card: ☐ **Mastercard** ☐ **Visa** ☐ **Discover** ☐ **American Express**
Card Number _____ *Expiration Date:* _____ *CVV:* _____ *(3 digit code on back of card)*
(or 4 digit code on front of AMEX)

(If the above name and address is not the same as your credit card billing, please provide the information from the card you are using.) Thank you!

www.countrysidehospicesupport.com

This newsletter contains donations processed through July 12th. The cutoff date for the August newsletter will be August 9th.