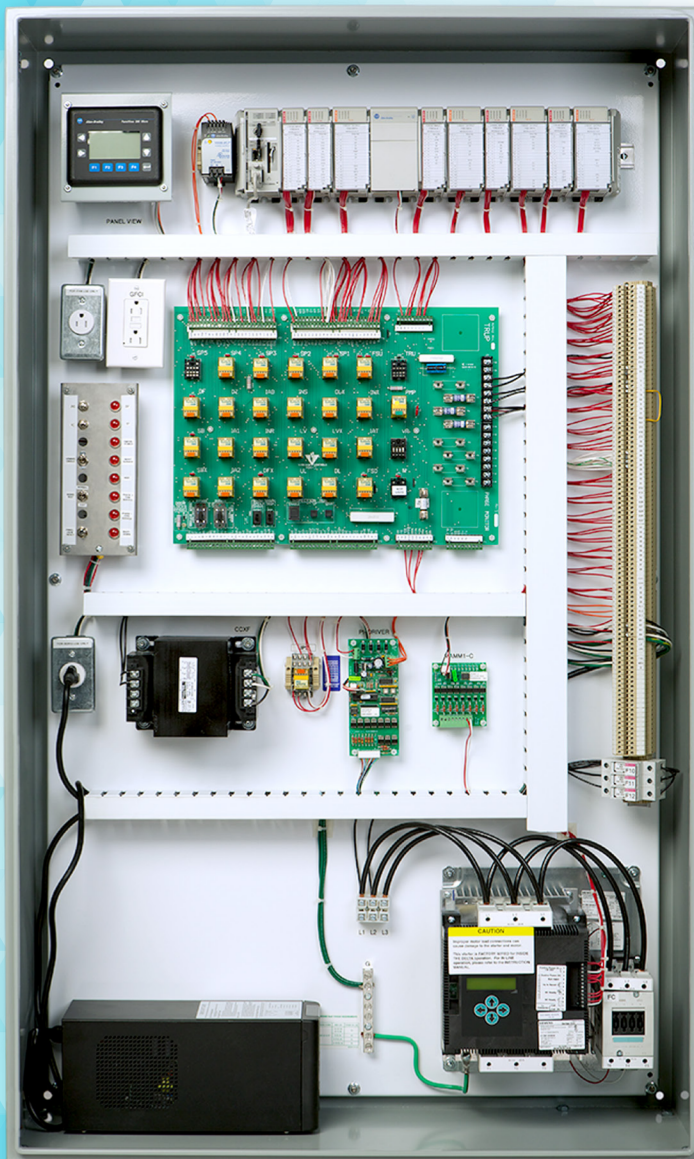


PLC Hydraulic Elevator Controller



APPLICATION:

- GE or Allen-Bradley Based PLC controller
- In-Ground, Telescopic, Hole-less, & Roped Hydraulic Elevators
- Passenger, Service or Freight Elevators

PLC Hydraulic Elevator Controller

SPECIFICATIONS:

- Max Speed: 200 FPM
- Capacity: As Required
- Max Landings: 10
- Max Cars in Group: 6
- Code: ASME A17.1 & ASME A17.5
- Certification: UL

STANDARD FEATURES:

- Discrete Wiring
- IP-8300 / IP-8700 Positioning System
- Field Adjustable Settings w/Keypad
- LCD Display w/Status Screens
- LED Status Indicators
- Non-Proprietary Software
- Door Nudging & ICU Operation
- NEMA 1 Enclosure

OPTIONAL FEATURES:

- Remote Monitoring Capability (Discrete Wired)
- Hospital / EMT Service
- SAPB, SBC, CPPB, Call & Send Operation
- Card Readers / Security
- Car-to-Lobby / Commandeering
- Emergency Power Operation
- Battery Rescue
- Solid State Starter
- Digital PI Interface
- Staggered or Walkthrough Openings
- Manual or Power Freight Doors
- NEMA 12, 4, 4X, 7, or 9 Enclosures