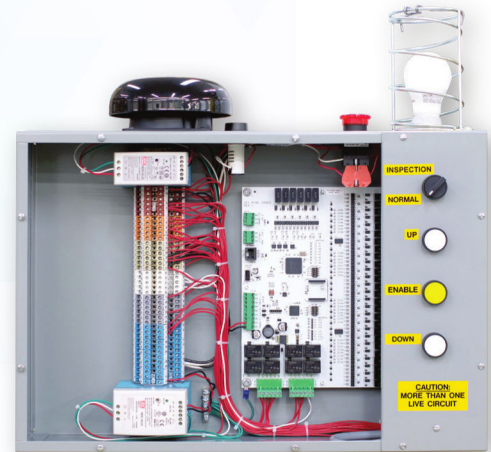
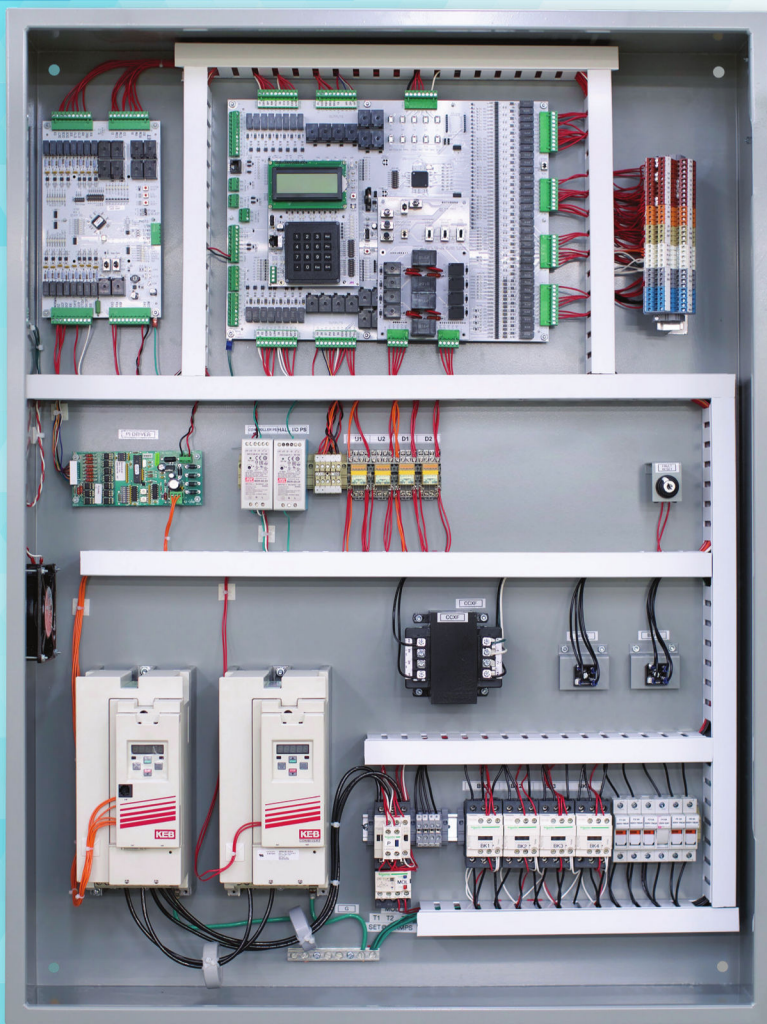


AC Traction Controller with Serial I/O



**WHAT'S
NEW**

- Compact, Lighter Weight Main Controller
- Single Enclosure for Car Top Inspection/
Terminal Junction Box Included
- Reduced Wire Count in Travel Cable
- Terminal Name to Wire Matched Travel Cable
- Color Matched Terminals, Diagrams and
Travel Cable
- Single CPU for Entire System
- Remote Adjustment Capability Via
Smartphone/Tablet

www.vaccontrols.com

AC Traction Controller with Serial I/O

SPECIFICATIONS:

- Features a Microprocessor-based CPU with Serial Connections
- For Geared, Gearless & MRL Applications
- Max Speed: 1,000 FPM
- Capacity: As Required
- Max Landings: 64
- Max Cars in Group: 8
- Code: ASME A17.1 & ASME A17.5
- Certification: CSA

STANDARD FEATURES:

- Serial Communication via CAN Bus
- EZ-Install with simplified field wiring
- ELGO Absolute Positioning
- Real-time Group Dispatching & Homing
- Program Updates via USB Flash Drive
- Field Adjustable Settings w/Keypad
- Non-Proprietary Software
- LCD Display w/Status Screens
- LED Status Indicators
- Door Nudging & ICU Operation
- NEMA 1 Enclosure

OPTIONAL FEATURES:

- | | | |
|--|-------------------------------------|--------------------------------------|
| • Wi-Fi Diagnostics via Web Interface | • Emergency Power Operation | • Manual or Power Freight Doors |
| • Remote Monitoring Capability | • Emergency Rescue | • NEMA 12, 4, 4X, 7, or 9 Enclosures |
| • Lift-Net® Compatible | • Harmonic Filter | |
| • Hospital / EMT Service | • Isolation Transformer | |
| • SAPB, SBC, CPPB, Call & Send Operation | • Regenerative Drives | |
| • Card Readers / Security | • Digital PI Interface | |
| • Car-to-Lobby / Commandeering | • Staggered or Walkthrough Openings | |