

VICINITY MAP
SCALE: 1"=2000'



LEGAL DESCRIPTION FOR A 10' WIDE POWER AND TELEPHONE UTILITY EASEMENT "A"

BEING A PORTION OF A PARCEL OF LAND IN FAIRFAX COUNTY IN THE COMMONWEALTH OF VIRGINIA WITH GPIN NUMBER 1014 01 0047A AND ACQUIRED BY FAIRFAX COUNTY PARK AUTHORITY AS RECORDED IN DEED BOOK 01848, PAGE 0222 OF THE LAND RECORDS OF CLERK OF THE CIRCUIT COURT OF FAIRFAX COUNTY, VIRGINIA, SUCH PORTION BEING MORE PARTICULARLY DESCRIBED AS FOLLOWS.

COMMENCING AT A POINT BEING A FOUND OPEN PIPE WITH VIRGINIA STATE NORTH ZONE COORDINATES OF NORTH 6951345.5132 AND EAST 11883396.0522, SAID OPEN PIPE BEING ON THE MOST SOUTHERLY PROPERTY CORNER OF SAID PARCEL WITH GPIN NUMBER 1014 01 0047A AND THE COMMON MOST NORTH WESTERLY PROPERTY CORNER OF A PARCEL WITH GPIN NUMBER 1014 33 A AND ACQUIRED BY MT. VERNON MEWS COMMUNITY ASSOCIATION AS RECORDED IN DEED BOOK 15477, PAGE 1160 OF THE LAND RECORDS OF CLERK OF THE CIRCUIT COURT OF FAIRFAX COUNTY, VIRGINIA; THENCE LEAVING SAID PROPERTY CORNER NORTH 38° 58' 09" WEST, A DISTANCE OF 126.47' TO A POINT, SAID POINT BEING THE TRUE POINT OF BEGINNING OF THE CENTER LINE OF A 10' WIDE POWER AND TELEPHONE UTILITY EASEMENT "A", 5' WIDE ON EACH SIDE;

THENCE NORTH 36° 31' 34" EAST A DISTANCE OF 31.32' TO A POINT;
 THENCE NORTH 66° 58' 57" EAST A DISTANCE OF 29.35' TO A POINT;
 THENCE SOUTH 70° 11' 16" EAST A DISTANCE OF 77.20' TO A POINT;
 THENCE SOUTH 76° 50' 43" EAST A DISTANCE OF 47.59' TO A POINT;
 THENCE SOUTH 80° 31' 52" EAST A DISTANCE OF 44.52' TO A POINT;
 THENCE SOUTH 85° 52' 38" EAST A DISTANCE OF 48.21' TO A POINT;
 THENCE NORTH 89° 48' 22" EAST A DISTANCE OF 53.07' TO A POINT;
 THENCE NORTH 85° 59' 38" EAST A DISTANCE OF 53.07' TO A POINT;
 THENCE NORTH 85° 39' 27" EAST A DISTANCE OF 99.39' TO A POINT;
 THENCE NORTH 82° 29' 22" EAST A DISTANCE OF 99.39' TO A POINT;
 THENCE NORTH 82° 50' 28" EAST A DISTANCE OF 26.40' TO A POINT;
 THENCE SOUTH 85° 58' 23" EAST A DISTANCE OF 26.40' TO A POINT;
 THENCE NORTH 23° 13' 00" EAST A DISTANCE OF 46.27' TO A POINT;
 THENCE NORTH 30° 25' 40" EAST A DISTANCE OF 87.11' TO A POINT ON THE MOST NORTHERN PROPERTY LINE OF SAID PARCEL WITH GPIN NUMBER 1014 01 0047A AND THE COMMON MOST SOUTHERN PROPERTY

LINE OF A PARCEL WITH GPIN NUMBER 1014 06 0011 AND ACQUIRED BY THE SCHOOL BOARD OF FAIRFAX COUNTY AS RECORDED IN DEED BOOK 02823, PAGE 0678 OF THE LAND RECORDS OF CLERK OF THE CIRCUIT COURT OF FAIRFAX COUNTY, VIRGINIA AND THE TERMINUS OF SAID CENTER LINE OF A 10' WIDE POWER AND TELEPHONE UTILITY EASEMENT "A", 5' WIDE ON EACH SIDE;

THE ABOVE DESCRIBED EASEMENT CONTAINING 7,796 SQUARE FEET OR 0.179 ACRES MORE OR LESS AND IS SUBJECT TO ALL MATTERS OF PUBLIC RECORD AS STILL MAY BE IN FORCE AND APPLICABLE. ALL OF THE ABOVE BEARINGS ARE NAD83 VIRGINIA STATE PLANES NORTH ZONE AND THE DISTANCES ARE GROUND.

LEGAL DESCRIPTION FOR A 10' WIDE POWER AND TELEPHONE UTILITY EASEMENT "B"

BEING A PORTION OF A PARCEL OF LAND IN FAIRFAX COUNTY IN THE COMMONWEALTH OF VIRGINIA WITH GPIN NUMBER 1014 06 0011 AND ACQUIRED BY THE SCHOOL BOARD OF FAIRFAX COUNTY AS RECORDED IN DEED BOOK 02823, PAGE 0678 OF THE LAND RECORDS OF CLERK OF THE CIRCUIT COURT OF FAIRFAX COUNTY, VIRGINIA, SUCH PORTION BEING MORE PARTICULARLY DESCRIBED AS FOLLOWS.

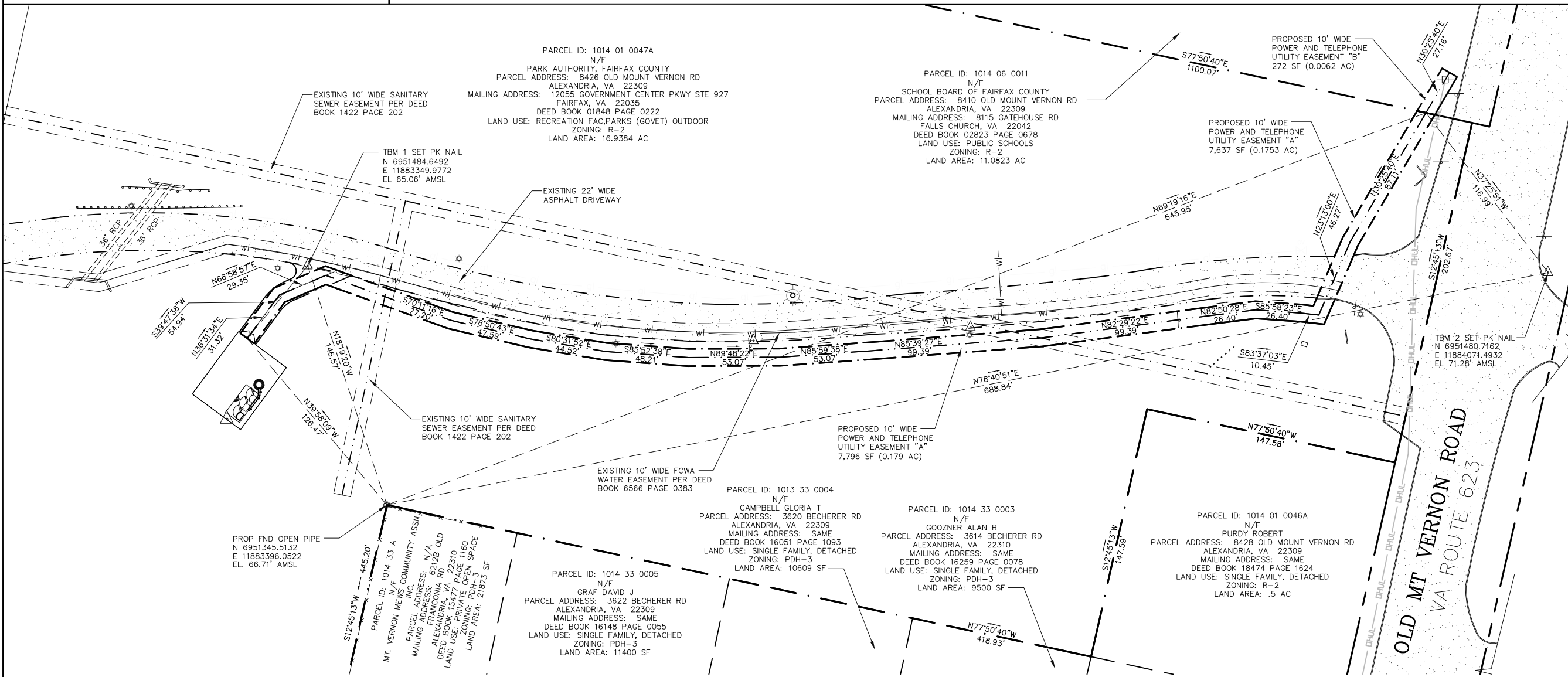
COMMENCING AT A POINT BEING A FOUND OPEN PIPE WITH VIRGINIA STATE NORTH ZONE COORDINATES OF NORTH 6951345.5132 AND EAST 11883396.0522, SAID OPEN PIPE BEING ON THE MOST SOUTHERLY PROPERTY CORNER OF A PARCEL WITH GPIN NUMBER 1014 01 0047A AND ACQUIRED BY FAIRFAX COUNTY PARK AUTHORITY AS RECORDED IN DEED BOOK 01848, PAGE 0222 OF THE LAND RECORDS OF CLERK OF THE CIRCUIT COURT OF FAIRFAX COUNTY, VIRGINIA, AND THE COMMON MOST NORTH WESTERLY PROPERTY CORNER OF A PARCEL WITH GPIN NUMBER 1014 33 A AND ACQUIRED BY MT. VERNON MEWS COMMUNITY ASSOCIATION AS RECORDED IN DEED BOOK 15477, PAGE 1160 OF THE LAND RECORDS OF CLERK OF THE CIRCUIT COURT OF FAIRFAX COUNTY, VIRGINIA; THENCE LEAVING SAID PROPERTY CORNER NORTH 69° 19' 16" WEST, A DISTANCE OF 645.95' TO A POINT ON THE MOST SOUTHERN PROPERTY LINE OF SAID PARCEL WITH GPIN NUMBER 1014 06 0011 AND THE COMMON MOST NORTHERN PROPERTY LINE OF SAID PARCEL WITH GPIN NUMBER 1014 01 0047A, SAID POINT BEING THE TRUE POINT OF BEGINNING OF THE CENTER LINE OF A 10' WIDE POWER AND TELEPHONE UTILITY EASEMENT "B", 5' WIDE ON EACH SIDE;

THENCE LEAVING SAID PROPERTY LINE NORTH 30° 25' 40" EAST A DISTANCE OF 27.16' TO THE TERMINUS OF SAID CENTER LINE OF A 10' WIDE UTILITY EASEMENT "B", 5' WIDE ON EACH SIDE;

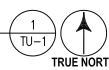
THE ABOVE DESCRIBED EASEMENT CONTAINING 272 SQUARE FEET OR 0.0062 ACRES MORE OR LESS AND IS SUBJECT TO ALL MATTERS OF PUBLIC RECORD AS STILL MAY BE IN FORCE AND APPLICABLE. ALL OF THE ABOVE BEARINGS ARE NAD83 VIRGINIA STATE PLANES NORTH ZONE AND THE DISTANCES ARE GROUND.

NOTES:

1. THE FAIRFAX COUNTY PARK AUTHORITY, PLANNING AND DEVELOPMENT DIVISION, EASEMENT COORDINATOR IS REQUIRED TO BE NOTIFIED BY THE GENERAL CONTRACTOR OR HIS AGENT OF:
 - SCHEDULED PRE-CONSTRUCTION MEETING (MINIMUM OF FIVE (5) BUSINESS DAYS NOTICE).
 - ENTRY INTO PARK AUTHORITY LANDS FOR THE PURPOSE OF CONSTRUCTION ACTIVITY (MINIMUM OF FIVE (5) BUSINESS DAYS NOTICE).
 - NOTICE OF INTENT TO VACATE PARK AUTHORITY HOLDING AND THE COMPLETION OF CONSTRUCTION, INCLUDING FINAL REPLANTING OF VEGETATION (MINIMUM OF SEVEN (7) BUSINESS DAYS NOTICE)
2. PRIOR TO ENTRY PARK AUTHORITY LANDS FOR THE PURPOSE OF CONSTRUCTION/MAINTENANCE ACTIVITY, THE GENERAL CONTRACTOR OR HIS AGENT SHALL OBTAIN A PERMIT FOR SUCH ACTIVITY FROM THE FAIRFAX COUNTY PARK AUTHORITY, PLANNING AND DEVELOPMENT DIVISION. 703-324-8511.



UTILITY EASEMENT PLAT
SCALE: 1"=30'-0"



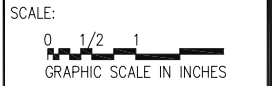
6100 EXECUTIVE BLVD, SUITE 430
ROCKVILLE, MD 20852
PHONE: (202) 408-0960

SUBMITTALS		
DATE	DESCRIPTION	REV.

SEAL:

T-MOBILE NORTHEAST LLC
12050 BALTIMORE AVENUE
BELTSVILLE, MD 20705
PHONE: (240) 264-8600

PROJECT NO: 1042.482
DESIGNER: R.S.
ENGINEER: C.S.



WAC062D
GEORGE WASHINGTON
RECREATION CENTER
8426 OLD MOUNT VERNON RD
ALEXANDRIA, VA 22309

TITLE:
**UTILITY
EASEMENT PLAT**

SHEET NUMBER:
TU-1