



CATALOG

2025

COUNTER PRO INC.®

OUR HISTORY

At Counter Pro Cabinets, we take immense pride in our legacy of craftsmanship and quality, built upon the strong foundation of a family company with over three decades of experience in the kitchen and bath industry. Counter Pro was founded in 1988 by Leigh Paulsen, and for years, we've been dedicated to creating custom kitchen and bath countertops that seamlessly blend style, functionality, and durability. Our team of experienced professionals takes the time to understand each client's unique needs, ensuring every project is crafted with the utmost attention to detail and care.

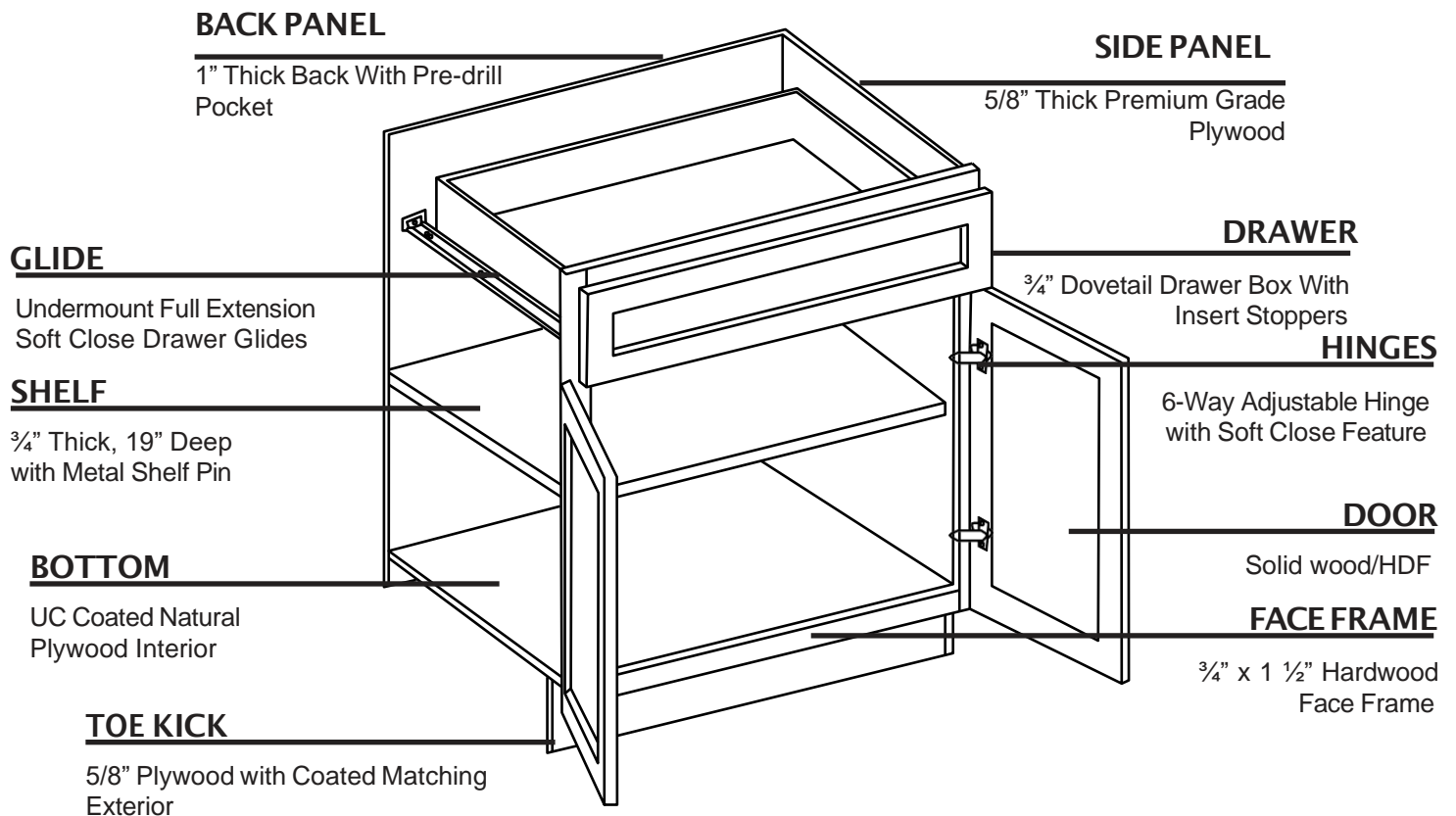
With a commitment to excellence, we continue to deliver exceptional products that enhance the beauty and utility of any space. Whether you're remodeling your kitchen, upgrading your bathroom, or seeking tailored storage solutions, Counter Pro Cabinets is here to bring your vision to life.

We are proud to now offer a line of cabinets for our customers. Over the years, we have built a reputation for reliability, innovation, and customer satisfaction—values that have earned us the trust of homeowners and businesses alike. Let Counter Pro Cabinets be part of your next project and experience the difference of true craftsmanship, backed by decades of industry expertise.

Looking forward, Counter Pro Cabinets aims to continue its legacy of innovation and quality.



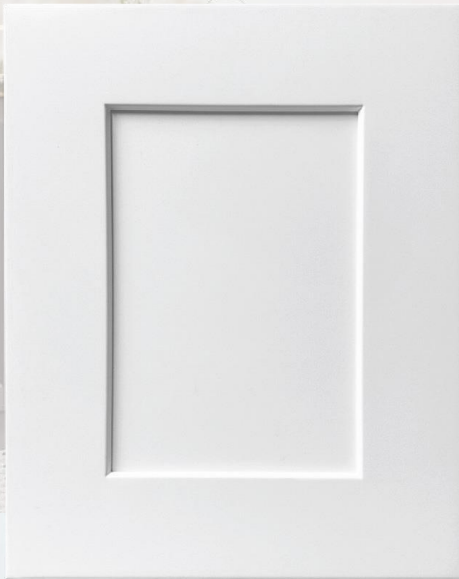
CABINET CONSTRUCTION



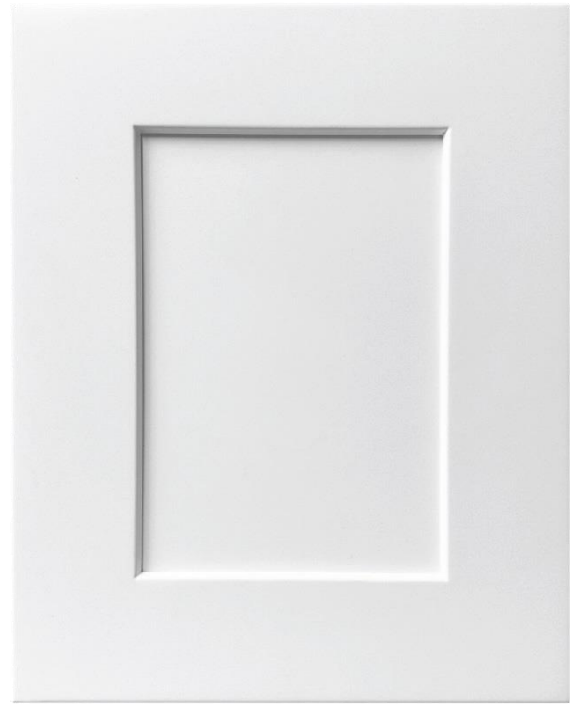


SHAKER

SERIES



SHAKER WHITE



DESCRIPTION

The Shaker White style, a classic and timeless design, embodies simplicity, functionality, and elegance. This style of cabinetry is a popular choice for kitchens and other spaces, known for its clean lines, versatility, and ability to complement a variety of design aesthetics.



DESCRIPTION

Shaker Light Gray is a painted finish that gives the kitchen a modern industrial look without feeling too dark. This style offers an impressive minimalist masterpiece with enduring appeal.



SHAKER LIGHT GRAY

SHAKER NATURAL



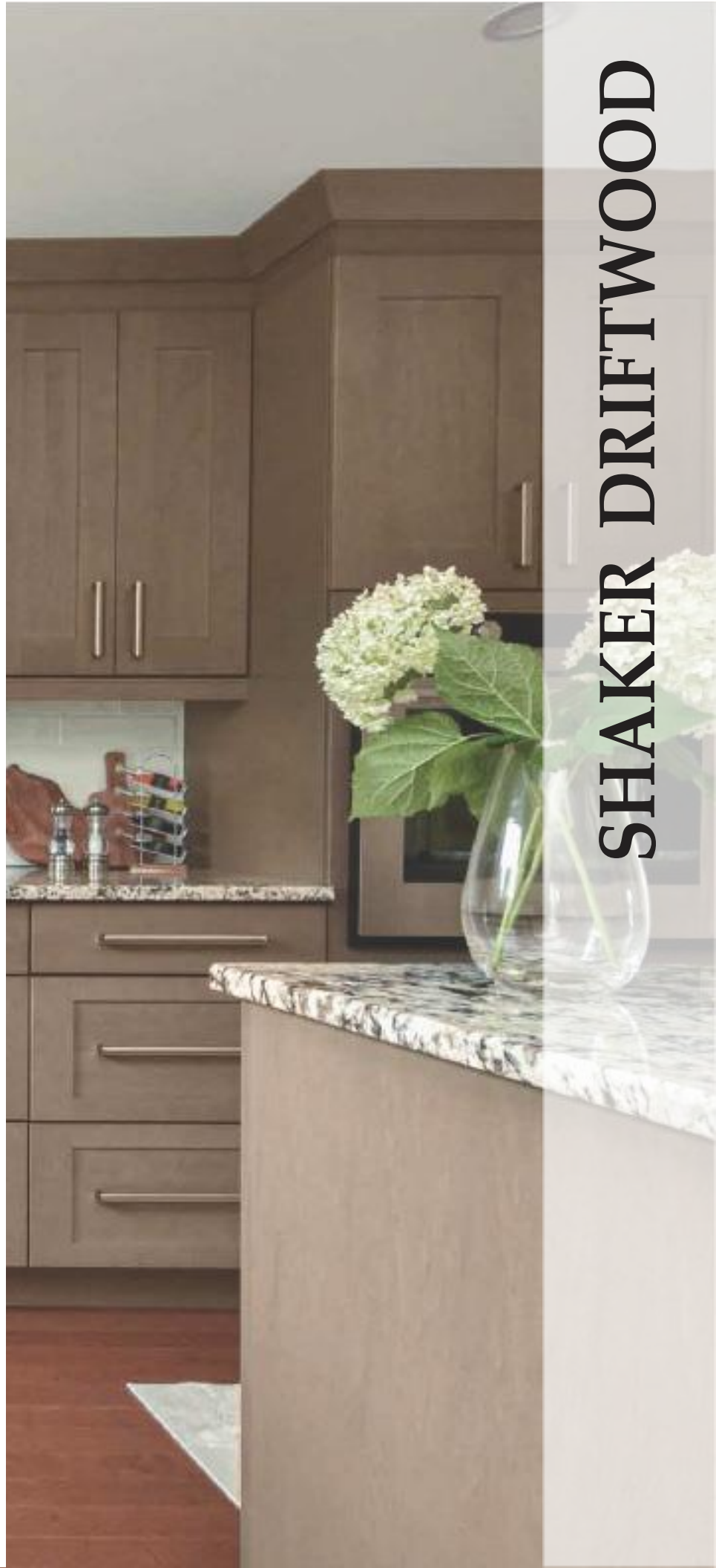
DESCRIPTION

The Shaker Natural style has a timeless and enduring quality. The inherent warmth and authenticity of the natural wood create a design that can transcend changing trends and remain a classic choice for homeowners seeking lasting elegance.



DESCRIPTION

The Shaker Driftwood cabinet captures the essence of coastal living and rustic elegance, drawing inspiration from weathered wood and the natural beauty of driftwood. This unique cabinet style adds a touch of organic charm to any space, blending coastal aesthetics with a sense of well-worn, relaxed sophistication.



SHAKER DRIFTWOOD

LEIGH

SERIES



ELEGANT WHITE



DESCRIPTION

The Elegant White style is a classic and timeless choice for kitchen and bathroom cabinetry. It's characterized by its clean and bright appearance, making it a popular option for a wide range of interior design themes. Elegant White exudes classic elegance that stands the test of time. It can suit both contemporary and traditional design schemes, offering a timeless quality that doesn't go out of style.



DESCRIPTION

The Luxe Green represents a harmonious fusion of classic sophistication and nature's timeless beauty. The muted and tranquil hue of green exudes a sense of tranquility and rejuvenation, making it a popular choice for kitchens and living spaces.



LUXE GREEN

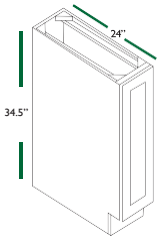
HAVEN BLUE



DESCRIPTION

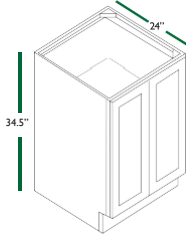
The Haven Blue style is the epitome of sophistication and versatility. The deep, rich shade of blue brings an air of timeless elegance to kitchens and living spaces, offering a modern twist on a classic color. The color choice brings a modern edge to classic designs, creating a space that feels both sophisticated and up-to-date.

BASE CABINETS (24" DEEP)



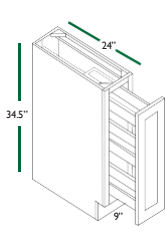
FULL DOOR BASE

BF0924 B1 1524 BF212 I BF1224
BF1824



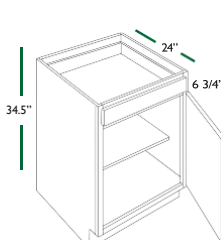
FULL DOOR BASE

BF2424 BF2 024 BF3624 BF2724
BF3324



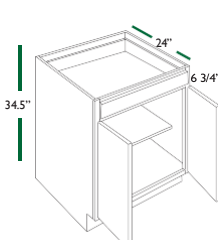
FULL DOOR BASE 9"

BF09-PO



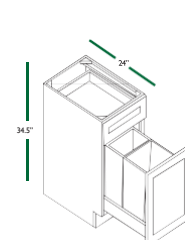
BASE SINGLE DOOR

B18 B15 B1 B21



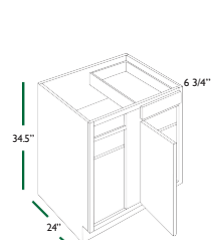
BASE DOUBLE DOOR

B30 B6 B24 B3 B27



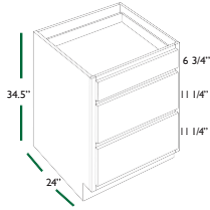
BASE WASTE BASKET

B18TR



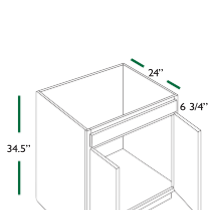
BLIND BASE

BBC42/45 BBC39/42



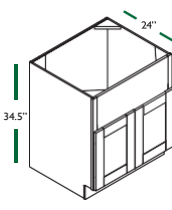
3 DRAWER BASE

DB12 DB21 DB30
DB15 DB24 DB33
DB18 DB27 DB36



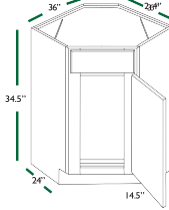
SINK BASE

SB36 SB30 SB24
SB33 SB27



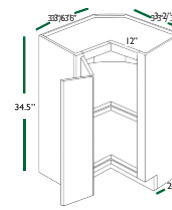
FARMER SINK

FS33 FS36



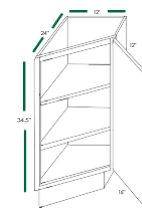
DIAGONAL SINK BASE

DSB36



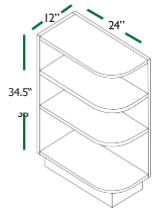
LAZY SUSAN

LSB33 LSB36



TRANSITIONAL BASE

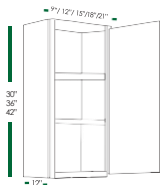
BTL12 3TR12



TRANSITIONAL BASE

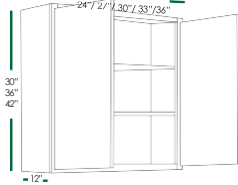
BES12L BES12R

WALL CABINETS (12" DEEP), PANTRY CABINETS & MICROWAVE CABINETS



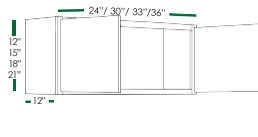
1 DOOR

W0930 W0936 W0942
W1230 W1236 W1242
W1530 W1536 W1542
W1830 W1836 W1842
W2130 W2136 W2142



2 DOORS

W2430 W2436 W2442
W2730 W2736 W2742
W3030 W3036 W3042
W3330 W3336 W3342
W3630 W3636 W3642



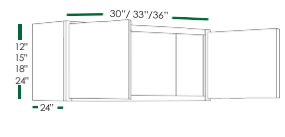
2 DOORS

W3012 418 W3121 W2415 W3312
W3015 018 W3612 W3318 W3315
W3618 615



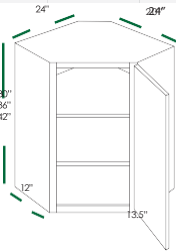
2 DOORS

12\"/>



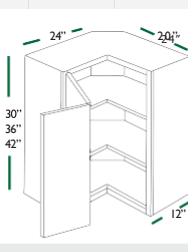
2 DOORS

W301224 W301524 W301824 W302424
W331224 W331824 W332424 W361824
W361224 W362424



WALL DIAGONAL CORNER

WDC2430 W C2436 WDC2442



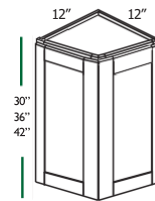
PIE CUT CORNER

WPC2430 WPC2436 WPC2442



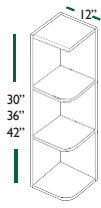
BLIND CORNER WBC2430

WBC2436 WBC2442
WBC3630 WBC3636 WBC3642



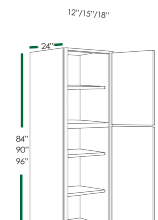
WALL ANGLE END

WAE1230 WAE1242 WAE1236



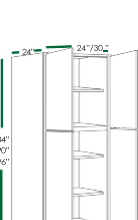
OPEN END

OE1230 OE1236 OE 242



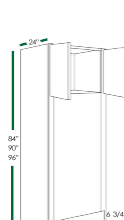
PANTRY 2 DOORS

TP128424 TP129024 TP129624
124 TP159024 TP159624
124 TP189024 TP189624



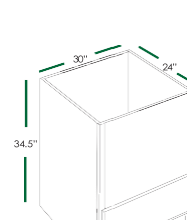
PANTRY 4 DOORS

TP249624 TP308424 TP309024
TP309624 TP249024 TP248424



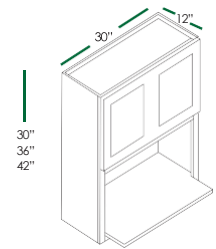
OVEN CABINET

OC3384 OI 3390 OC339



MICROWAVE BASE

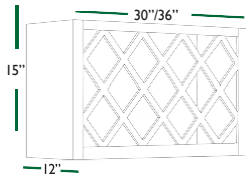
BMC30



WALL MICROWAVE

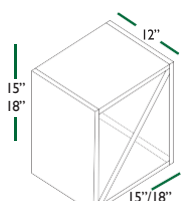
WM3030 WM3036 WM3042

SPECIALITY ACCESSORIES



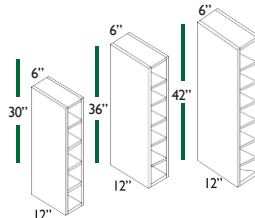
WINE RACK

WR3015 WR3615



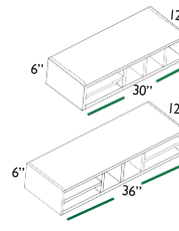
WINE RACK

WR1515 WR1818



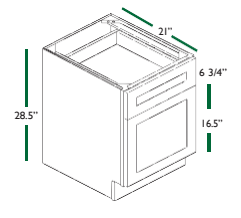
WINE CUBE

WC0630 WC0636 WC0642



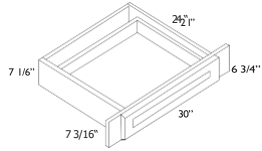
WALL ORGANIZER

WO306 WO366



FILE DRAWER BASE

FD1821



KNEE DRAWER

BKD30 KD30

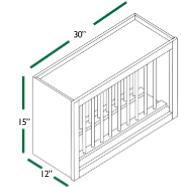
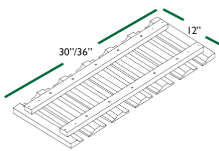


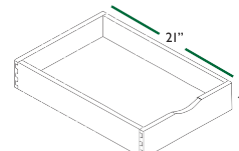
PLATE RACK

PR3015



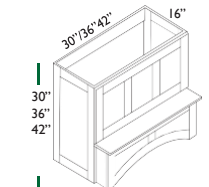
GLASS HOLD GL-30

GL-36



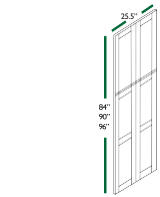
ROLL-OUT TRAY

RD15 RD24 RD33
RD18 RD27 RD36
RD21 RD30



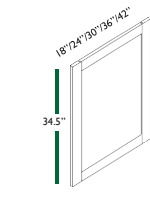
CUSTOM HOOD

RHA3030 RHA4230
RHA3630 RHA4236
RHA4242



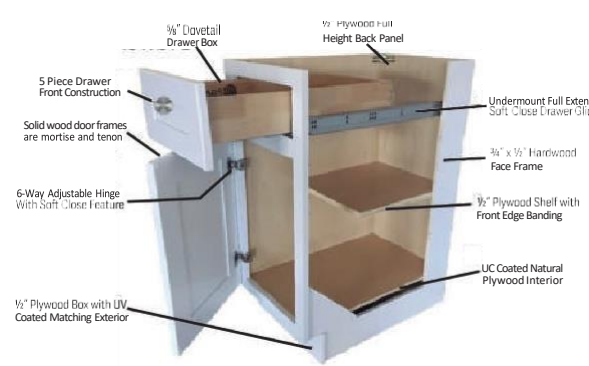
PANEL DOOR

WP-T84 WP-T90 WP-T96



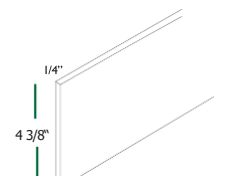
PANEL DOOR

WP-BASE 18 WP-W30
WP-BASE 24 WP-W36
WP-W42



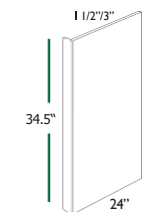
POST

SP336



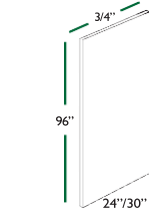
TOE KICK

TK8



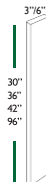
DISHWASHER PANEL

DWR1 DWR3



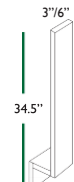
REFRIGERATOR PANEL

REP2496-1 1/2 REP2496
REP3096-1 1/2 REP3096



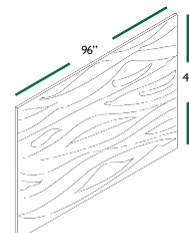
WALL FILLER

WF330 WF630 WF396
WF336 WF636 WF696
WF342 WF642



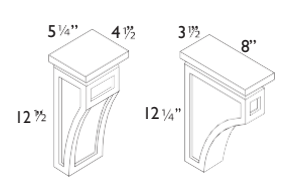
BASE FILLER

BF3 BF6



PANEL

PLY-48x96x1/4
PLY-48x96x3/4



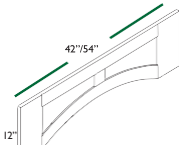
CORBEL

CMCB CML



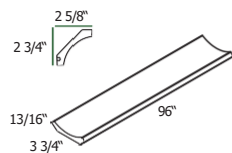
VALANCE VAR36

VAR54



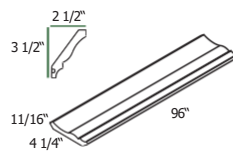
VALANCE

VARP42 VARP54



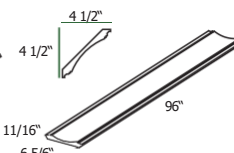
MOLDING

CM4



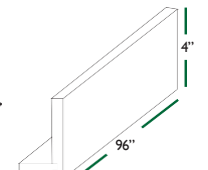
MOLDING

CM6



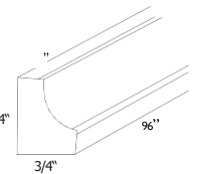
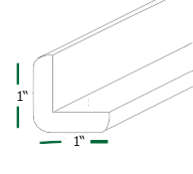
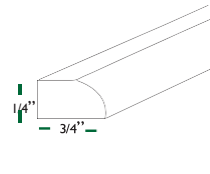
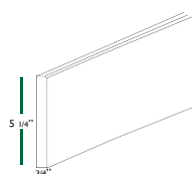
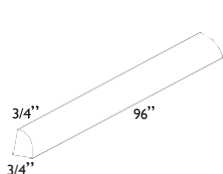
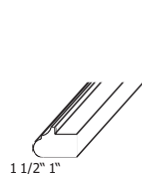
MOLDING

CM7



MOLDING

CMR4



LIGHT RAIL MOLDING
LRM

QUARTER ROUND MOLDING
QRM

BASE BOARD MOLDING
BBM5

SIMPLE SCRIBE
SM8-S

OUTSIDE CORNER
OCM8

INSIDE CORNER
ICM8

Limited Warranty

5-Year Limited Warranty

Counter Pro Cabinets offers a five-year warranty covering defects in materials and workmanship. If an issue arises, Counter Pro Cabinets may choose to repair or replace the product.

This warranty does not cover issues resulting from improper storage or installation, and it has several exclusions, including:

- Costs associated with removing or installing materials.
- Natural variations and aging of wood.
- Damage from misuse, abuse, negligence, or unauthorized modifications.
- Products purchased without finish.
- Labor charges and incidental or consequential damages.

Certain conditions are not covered, including:

1. Natural aging or wood characteristics.
2. Damage from misuse, abuse, negligence, alteration, or non-residential use.
3. Installation of heating vents near cabinets.
4. Use with non-Counter Pro Cabinets products.
5. Final sales or clearance items.

For doors with warping or panel shrinkage of 1/4" or less, allow them to hang for one season before requesting a replacement. Ensure proper installation before initiating a claim.

For warranty claims, contact your local authorized Counter Pro Cabinets dealer.

For assistance with warranty claims, customers are encouraged to contact their local authorized Counter Pro Cabinets dealer.



210 Lincoln St
Manchester, NH 03103
1-603-647-2444
cabinets@counterproinc.com
www.counterproinc.com