

Welcome to 3 Leeward Lane - 3 Bedrooms

Seafoam, Sparkles & Sweet Dreams



This restful seafoam green master bedroom is furnished with a full-sized bed, a bureau, storage ottoman, end tables, and lamps decorated with sea glass and crystals. The windows are dressed with seafoam curtains and shears. Six pillows, two pillow shams, a dust ruffle, a full-sized comforter, and throw pillows are provided. **Guests should bring their own pillowcases and full-sized sheets to this Seafoam Room.**

The Alpha to Zulu Zone

This bedroom is furnished with two twin-sized beds, an end table, two bureaus, and two lamps. The walls are draped with nautical signal flags. Bright red rope-hung drapes and buoys cover the windows. Six pillows, mattress protectors, comforters, dust ruffles, and pillow shams are provided. **Guests should bring their own pillowcases and twin-sized sheets for their stay in The Alpha-Zulu Room.**



Sea Stars & Stripes



This room is furnished with a full-sized bed, two end tables, three lamps, and a large bureau. The bed has six pillows, a mattress protector, a quilt, dust ruffle, and throw pillows. The windows are adorned with navy blue drapes and plenty of starfish. **Guests who plan to stay in the Sea Stars & Stripes Room should bring their own pillowcases and a set of full-sized sheets.**

Full Bath

This full bath is decorated with a blue sea creatures including a giant blue sea horse on the shower curtain. If you have sandy feet, please make use of the outdoor shower on the deck. **Guests should bring their own bath towels, hand towels, face clothes, beach towels, toilet paper, tissues and toiletries. Don't forget tub and beach toys for the kids!**

Kitchen/Dining Room

The kitchen is fully stocked with dishes, glasses, flatware, baking and cookware. Appliances include a gas stove, microwave oven, refrigerator/freezer, dishwasher, and Keurig coffee machine. The large, square dining table comfortably seats eight. Cleaning supplies are stored in the large mirrored cabinet. A sliding door opens out onto the deck. **Guests should bring their own food, dishtowels, coffee pods, and paper goods such as trash bags and paper towels.**

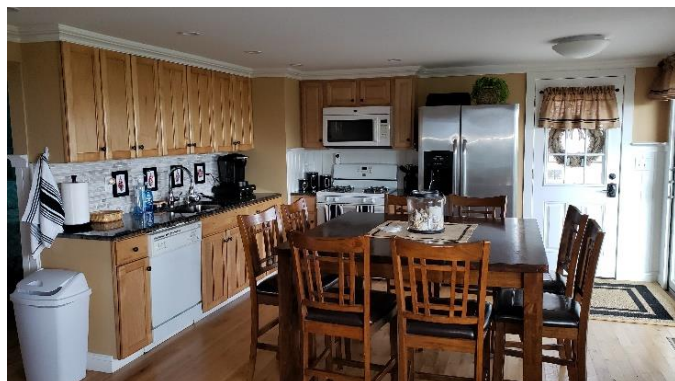
Living Room

The living room is decorated in seashells with a black and burlap color scheme. There is a bar cabinet beneath the TV. This room also contains an end table, a table lamp, two swag lights, a rocking chair, and a storage ottoman. Burlap valances top your ocean view through the picture window.

Important Information

- **Check-in:** Check-in is at 2:30 pm on Saturday. Enjoy your vacation!!!!
- **Cleaning:** We ask that our visitors clean the house after your vacation (*before you leave*), and *ALSO when you arrive*. In this COVID world, we ask that you clean, or wipe down, the surfaces when you arrive before you start your vacation.
- **ABSOLUTELY NO PETS, NO SMOKING**, as stated in your rental agreement.
- **Child Safety:** If you have small children, please childproof inside and out. Harmful chemicals, electrical outlets or sharp objects may be within their reach.
- **Air Conditioning/Heating:** Each bedroom has a ceiling fan, and there is central heating/air conditioning.
- **Alarms:** You will hear a warning beep whenever someone passes the shed and again when they walk up the stairs. If you hear a steady, periodic beep, then it's likely that a fridge/freezer door was accidentally left open.
- **Door Code:** We will give you the door code. After you close the door, it should automatically lock; but check it to be sure because if it doesn't lock, that means you need to turn the knob on the inside of the door for the lock to engage.
- **Circuit Breakers:** The electrical panel is inside the tall closet in the kitchen between the picture window and the sliders. DO NOT attempt to move that cabinet, the circuit panel is accessed through the cabinet.
- **TV and Internet:** Cable TV is provided. There is no landline phone. Wireless internet access is available for free using the "Seaside LL(secured)" network. The password is "capecod2019".
- **Fire Prevention: Please be careful not to lean on the stove knobs... It can lead to an accidental gas leak.**
- **Fire Table:** To start the gas fire in the backyard firepit, turn the gas knob on the side nearest the picnic table. Do not start the fire if rain is expected because the glass needs some cool-down time before you can replace the cover. Please be sure to re-cover the table whenever it's not in use (as soon as it's cool enough). Do not cook over this fire. Sorry, no smores.
- **Grilling:** You can use the grill behind #1. A gas grill, some Adirondack chairs, and a picnic table are available for outdoor dining. Please do not burn charcoal in the gas grill.
- **Shed:** Beach toys/chairs are stored in the shed. Shed keys are hanging on the rack to the left of the stove in #1B.
- **Septic System:** To avoid septic system problems, do not flush tampons, tampon applicators (even the "flushable" kind), or feminine napkins down the toilet. Do not dispose of cooking grease in the kitchen sink. Please wash any beach sand off in the outdoor shower before using the indoor shower/tub.
- **Trash:** Trash pickup is on Wednesdays and Saturdays. Have your trash neatly bagged in the barrels in the trash enclosure between the shed and the house by 7:30 am. Use lids and anchor them with bricks to prevent animals from making a mess.
- **Check-out: There is no cleaning crew this year, so please leave the unit as clean as you found it.** Check-out time is at 9:00 am on the following Saturday. Please turn off all fans and appliances. Lock all windows/doors. Thanks for staying with us!

Andrew A. Aberdale
5 Stacy Way
Acton, MA 01720
Cell: (617) 828-3992



Andrew A. Aberdale
5 Stacy Way
Acton, MA 01720
Cell: (617) 828-3992



Andrew A. Aberdale
5 Stacy Way
Acton, MA 01720
Cell: (617) 828-3992