

The coolest nerd in school

Leech

A vibrant cartoon illustration of a school at night. The central character is a young man with dark hair, glasses, and a wide, toothy grin showing fangs. He is wearing a dark blue sweater over a light blue collared shirt. He stands with his hands on his hips. Behind him, a crowd of diverse, happy-looking students is gathered. In the background, a brick school building is lit up from within, with the words "HIGH SCHOOL" visible on its facade. The sky is dark blue with a crescent moon and scattered stars.

Movie



When a shy middle-schooler is mistaken for a real vampire, he becomes an overnight sensation, but keeping up the act pushes his friendships, crush, and sanity to the edge of a total (and totally hilarious) meltdown.



“Feeling lost doesn't make you a loser.”

Synopsis



Leech centers on Lenny, a shy middle-schooler who struggles with insecurity and fainting spells, especially around blood. Known as the king of dorks, his life flips upside down when an awkward incident on a school field trip sparks a rumor that he's turning into a vampire. The buzz quickly makes him the center of attention, and instead of denying it, he embraces the opportunity and rides the wave to become the most popular kid in school.

His best friend Max disapproves of the hoax and watches Lenny drift away, while Ellie, a thoughtful classmate who actually understands him, sees right through the fake persona. Meanwhile, Jewels, the school antagonist, becomes obsessed with proving Lenny is a fraud.

The story escalates at the height of Lenny's accidental fame. He stages stunts, dodges scrutiny, and gets caught between wanting to feel special and wanting to be himself. At the Monster's Ball dance, the pressure peaks when he attempts an elaborate special-effects illusion to "transform into a bat." Jewels sabotages the setup, the curtain flies open, and Lenny is exposed in the most humiliating way possible.



In the finale, Lenny is forced to confront the consequences, rebuild trust, and learn that what makes him special isn't the persona he created but his kindness and the connections he nearly lost. The story concludes in a heartwarming way, with Lenny embracing who he truly is and using his real talents to reconnect with Max and Ellie.

Leech delivers big comedy, strong visual set pieces, and a relatable emotional core about identity, insecurity, and the universal desire to belong.

Attached Voice Talent



Tomas Villamizar is a seasoned voice actor specializing in video games, animation, and commercial projects, known for his work in *Superthings Rivals of Kaboom* and *Magic Chess: Go Go*.



Lenny – Reluctant hero whose journey from invisibility to false stardom and back forms the emotional spine of the film.



Max – Lenny's best friend, struggling with being left behind as the lie grows.



Sarah Avila is a talented voice artist known for her work on PBS Kids *Rosie's Rules*, *Mobile Legends: Bang Bang*, and appearances in *13 Reasons Why*.



Ellie – Warm, perceptive, and quietly brave, she represents authenticity and emotional truth.

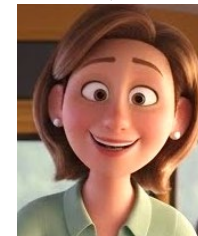


Katie – The “it” girl in school who latches on to Lenny's fame to heighten her popularity.

Ideal Casting



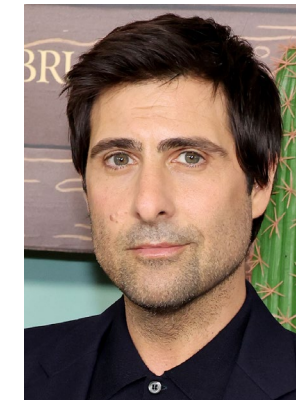
Melissa McCarthy would bring warmth, comedic authority, and emotional grounding, balancing broad humor with genuine heart in a way that makes characters instantly relatable to both kids and adults.



Lenny's Mom – Overly supportive, and unintentionally funny, she grounds the story with parental warmth.



Mrs. Tillman – Caring teacher who nurtures Lenny's creativity



Jason Schwartzman adds distinct, offbeat delivery and emotional subtlety making him an ideal voice for Jewels or Ari, bringing humor, vulnerability, and a quietly soulful quality that elevates the characters beyond archetype.



Jewels – A competitive class antagonist determined to expose Lenny and reclaim the spotlight.



Ari – Enthusiastic, conspiracy-loving friend who accelerates the chaos with comedic zeal.

Comparatives



Leech aligns with a class of animated features that blend genre flavor with deeply human storytelling, films centered on young protagonists navigating identity, fear, and connection within stylized, emotionally grounded worlds. Prioritizing heart, humor, and clarity of theme over franchise spectacle, Leech is designed as a mid-budget animated feature with broad family appeal, strong rewatch value, and enduring audience connection.





A Seasonal, Emotion-Driven Family Film with Repeat Viewing Value

Built-in Audience

- Halloween is one of the most engaged entertainment seasons in the U.S. **Over 70%** of Americans participate in Halloween activities annually, making it the second-largest seasonal entertainment window after Christmas. Halloween films consistently benefit from annual rewatch behavior across theatrical, streaming, and home viewing.
- Family animation centered on identity and belonging has proven cross-generational appeal. Films that explore themes of feeling different, hiding one's true self, and finding acceptance consistently perform well with both children and adults, driving strong word-of-mouth and long-tail engagement.
- Vampires and “gentle spooky” genre content remain culturally evergreen. Vampire stories continue to resonate across generations, particularly when presented through a warm, comedic, and emotionally accessible lens suitable for family audiences.
- **Mid-budget** animated features show strong longevity beyond opening weekend. Character-driven animated films often generate value through repeat seasonal viewing, streaming discovery, and library relevance rather than relying solely on blockbuster theatrical performance.

Leech is designed as a Halloween-adjacent animated feature that blends emotional storytelling with accessible genre appeal, positioning it for repeat seasonal viewing and lasting audience connection across platforms.

