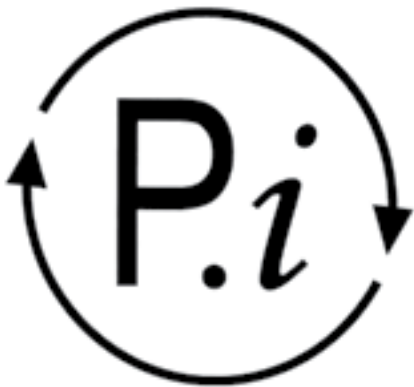


Uniclass	EPIC
L411:P43	D11:X421
Cl/SfB	
(31.5)	Xh4



comar7P.i LS

Comar 7P.i Lift & Slide Door



complementing architecture

design



Comar 7P.i Lift & Slide Door

The Comar 7P.i Lift and Slide was developed to ensure a high performance solution that offers market leading performance.

Feedback from the UKAS Accredited Test House was "it is the best they'd ever seen", as it passed BS6375 Parts 1, 2 and 3 with no water leakage at 1050Pa.

The hardware, has been tested to over 25,000 cycles.

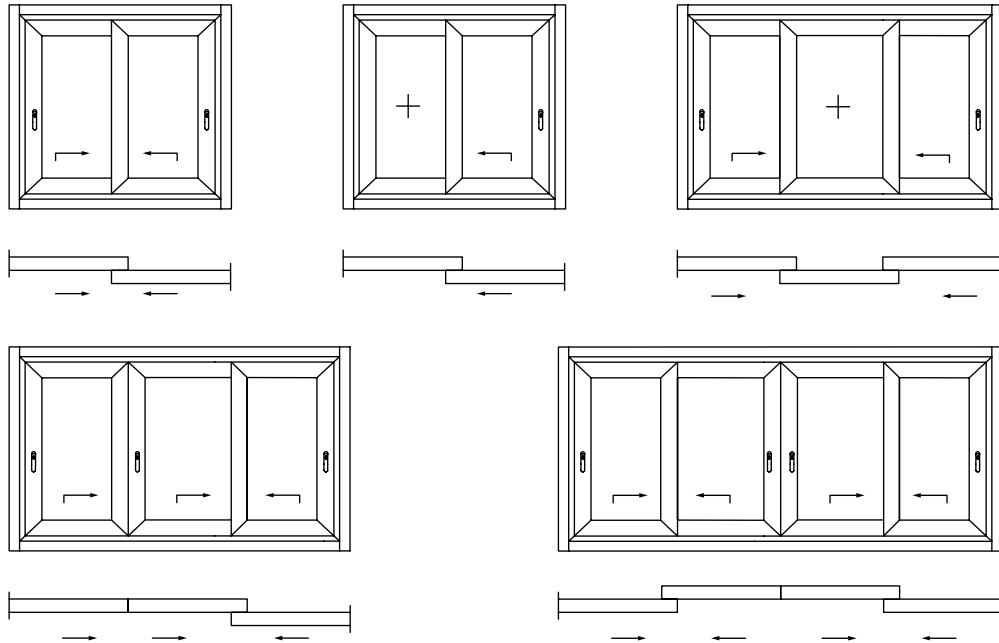
As Secure by Design is now being incorporated into some region's Planning conditions and BREEAM Assessments, Comar 7P.i LS passed the new stringent PAS24:2012 and holds a Kite-mark and Q-mark for Enhanced Security to enable sub-contractors to provide an SBD Licensed product to discerning Clients and Architects.



comar7P.i LS

perform

Configurations



Weather Performance & Security

	Result	Class
Water Tightness	1050Pa	Class 4
Wind Resistance	2400Pa	Class A5
Security	PAS 24:2012	Pass
Secure by Design	Available	-



Size & Weight Limitations

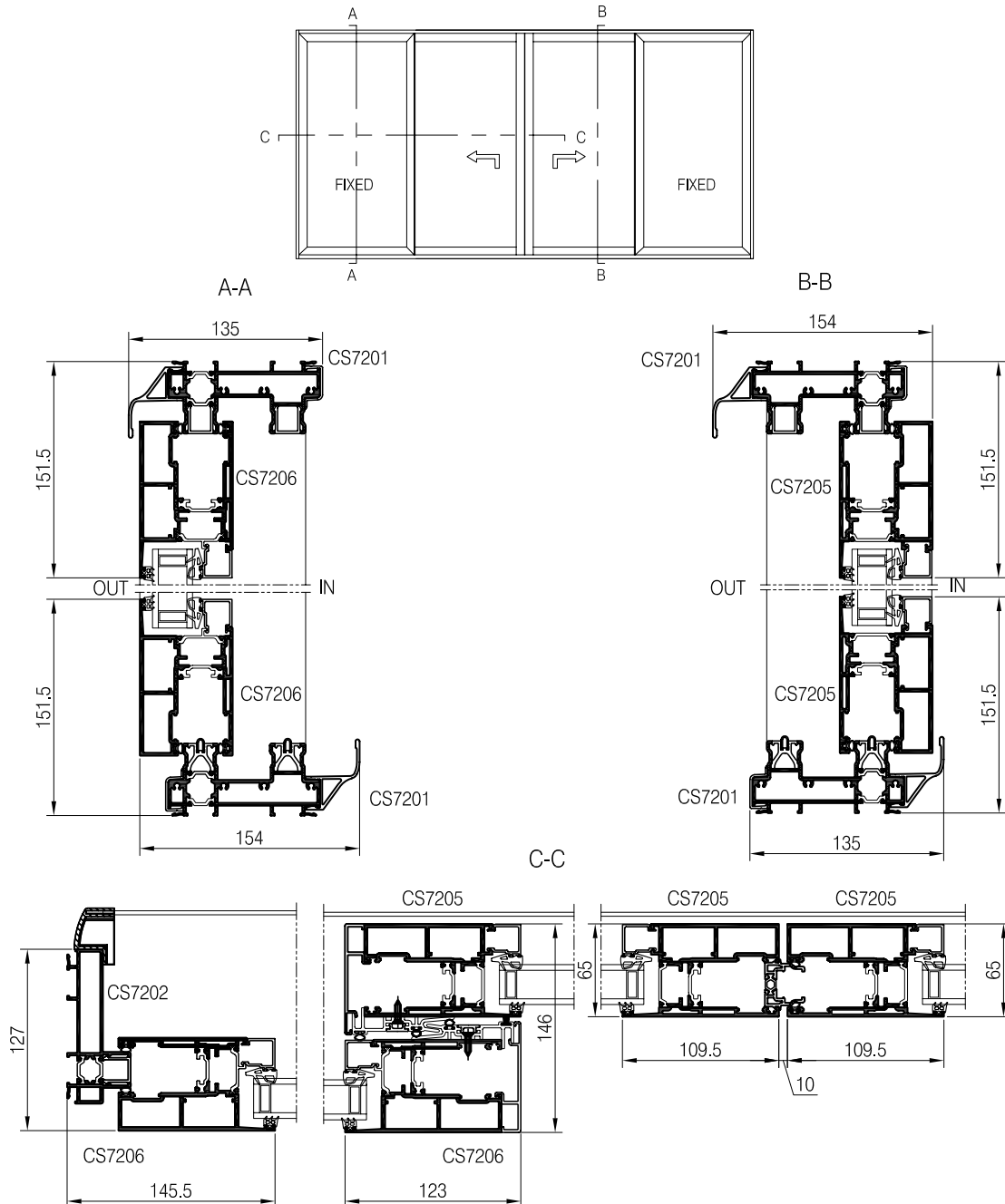
	Minimum	Maximum
Height	1150mm	3000mm
Width	720mm	3000mm
Weight	-	400Kg



Glazing Sizes

	Minimum	Maximum
Glazing	7mm	50mm

Comar 7P.i LS Section & Elevations



The Parkside Group Ltd

The Willow Centre
17 Willow Lane, Mitcham
Surrey CR4 4NX

Tel: 0208 685 9685
Fax: 0208 646 5096
Email: projects@parksidegroup.co.uk
Web: www.comar-alu.co.uk

Technical Back-Up

An experienced Sales Team covers the UK while the Technical Department offers an unsurpassed design and installation advice service to designers, specifiers and fabricators; Simply call: 0208 685 9685

For More Information

To find out more about this or any other Comar Architectural Aluminium System, or to obtain your personal copies of the Comar Technical Manuals call: 0208 685 9685 or fax on: 0208 646 5096