

# Blue Van

## Wheelchair Accessible Vehicle Instructions

A simplified step-by-step guide using one photo per step.

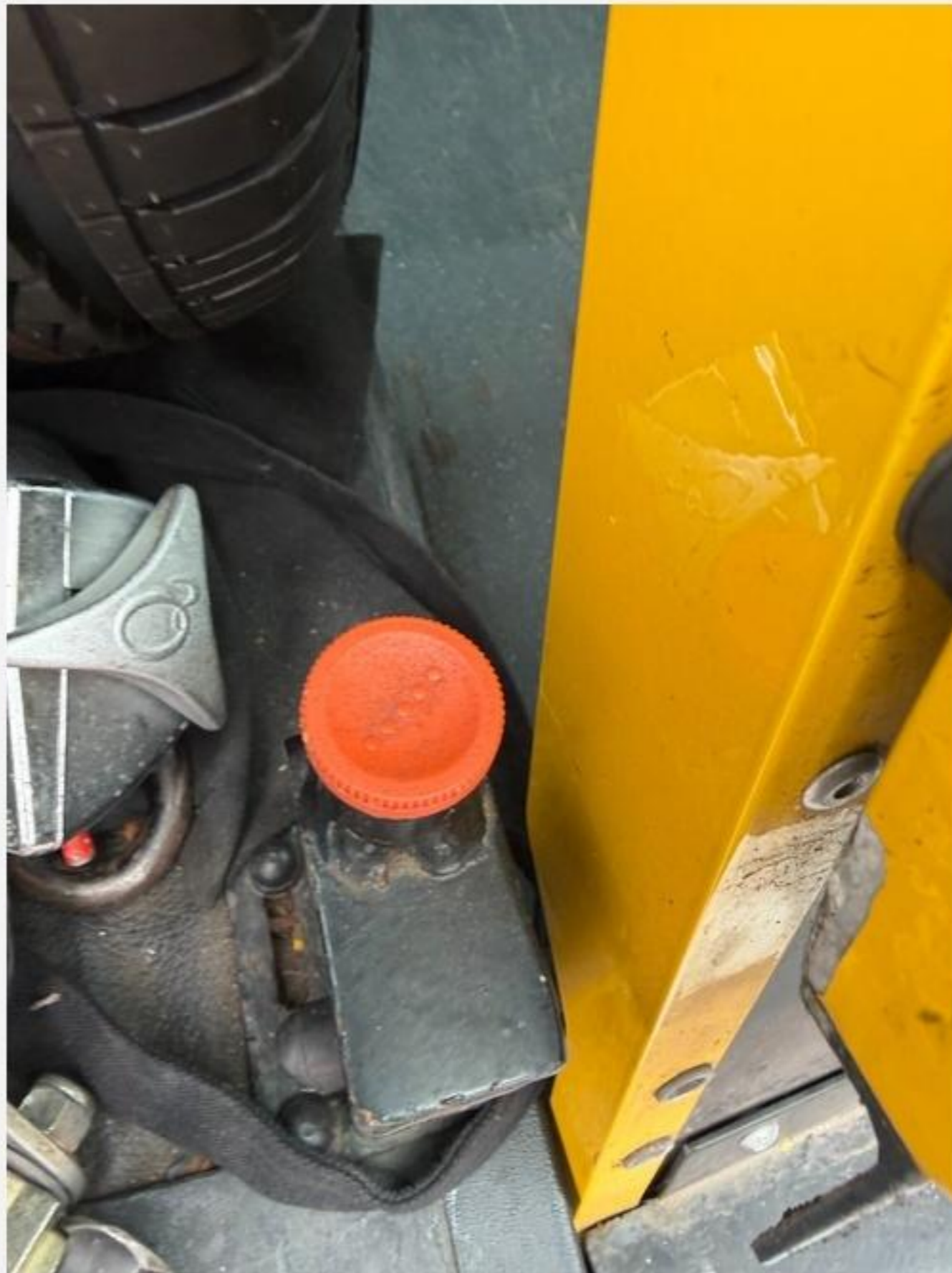




## 1 Step 1

**Open rear door to allow ramp access.**

1 of 11



## 2 Step 2

**Press the red button to release the ramp.**

2 of 11



**3**

**Step 3**

**Bring the ramp down, then push the wheelchair up into the van.**

3 of 11



## 4 Step 4

**Locate the ratchets.**

4 of 11



5

## Step 5

**Secure to the floor by sliding into the floor rails, listen for the click, and check the ratchet is secured.**

5 of 11



## 6 Step 6

**The front ratchets are fixed to the floor, but the process is the same.**

6 of 11

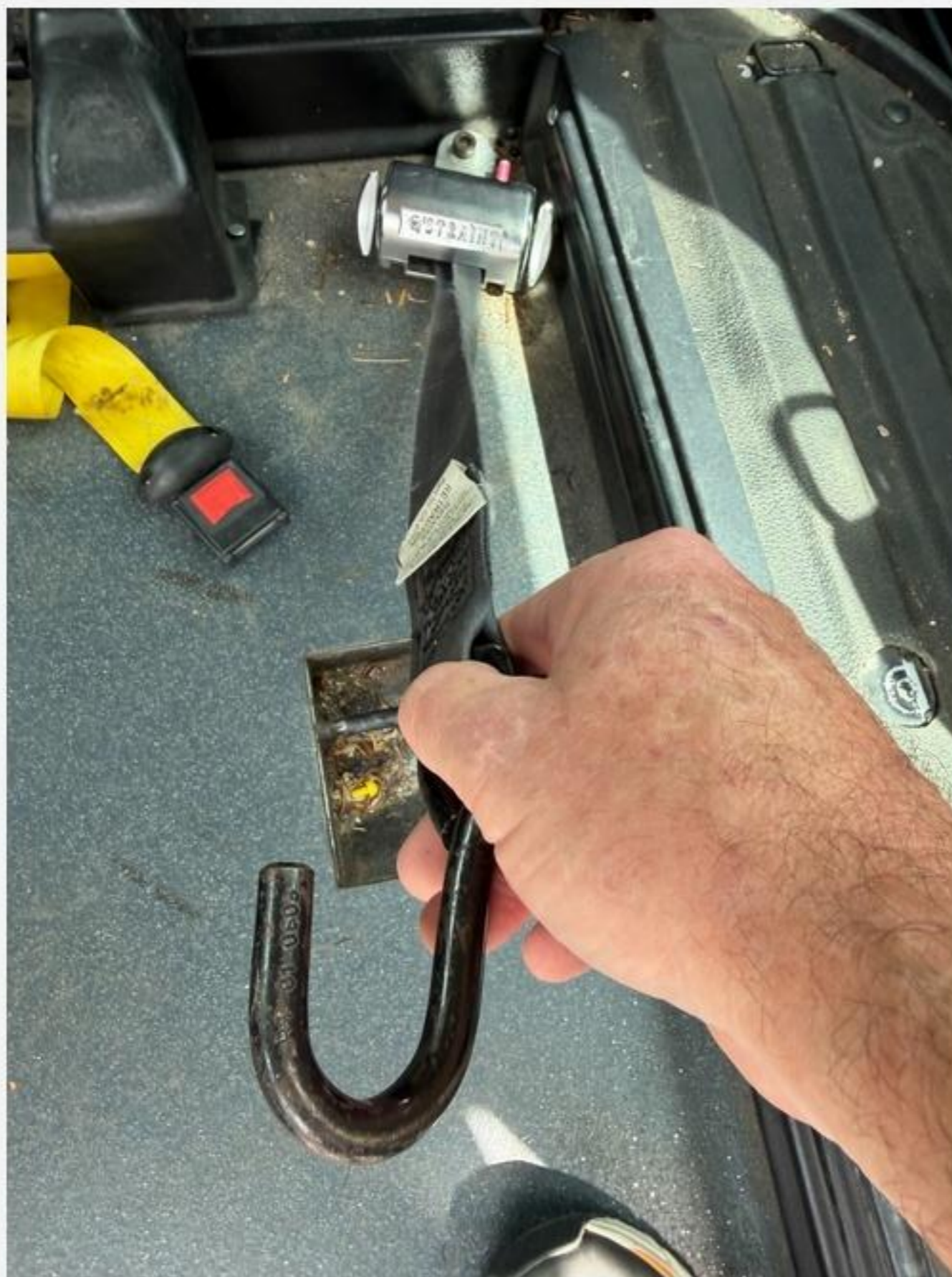


7

## Step 7

**Hold the red lever down to release the strap and hook.**

7 of 11



8

**Step 8**

**Hook to the body  
of the wheelchair.**

8 of 11



## 9 Step 9

**Repeat on all four corners, making sure not to hook onto the foot rests of the wheelchair.**

9 of 11



## 10 Step 10

**Bring the seat belt all the way around the wheelchair user.**

10 of 11



## 11 Step 11

**Hook the belt onto the body of the ratchet block.**

11 of 11