

RMCSS-1
0617 ITA



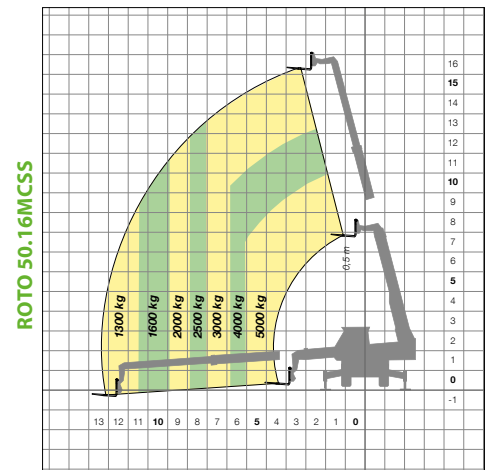
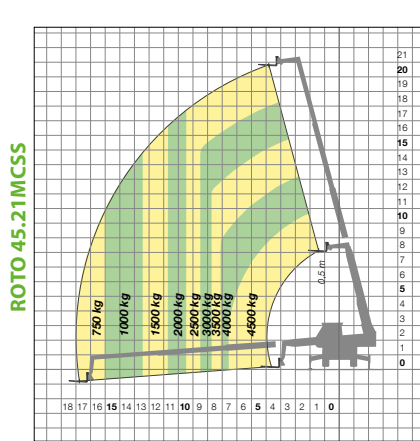
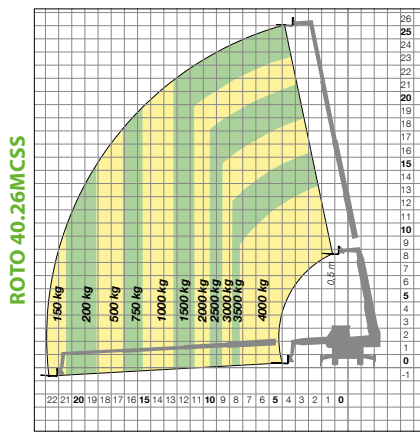
ROTO MCSS - 40.26/45.21



PERFORMANCE AND FEATURES		ROTO45.21MCSS	ROTO40.26MCSS	ROTO50.16MCSS
PERFORMANCE	Total unladen weight (kg)	15050	16050	14750
	Maximum capacity (kg)	4500	4000	5000
	Lifting height (m)	20,8	26	16,4
	Maximum reach (m)	17,8	22,9	13,3
	Maximum operating height (m)	10,6	13,9	11
	Maximum operating reach (m)	7,6	8,2	6,1
	Capacity at maximum height (kg)	2500	1500	3000
	Capacity at maximum reach (kg)	750	150	1300
	Lateral boom movement (mm)	-	-	-
	Tilting correction (%)	+/-10, +/-8	+/-10, +/-8	+/-10, +/-8
	Boom sections	4	5	3
POWERTRAIN <>	Turbo motor	FPT NEF45	FPT NEF45	FPT NEF45
	Displacement/cylinders	4500/4	4500/4	4500/4
	Engine Power (kW/HP)	125/170	125/170	125/170
	Anti-pollution technology	EURO IV, SCR+DOC	EURO IV, SCR+DOC	EURO IV, SCR+DOC
	Reversible fan	-	-	-
	Maximum speed (km/h)	40	40	40
	Fuel tank (l)	150	150	150
	AdBlue tank (l)	25	25	25
	Hydrostatic transmission	●-2V	●-2V	●-2V
	EPD	Base	Base	Base
	Axles	portal	portal	portal
	Reduction hub	RR700	RR700	RR700
HYDRAULIC	Machine brakes	dry discs	dry discs	dry discs
	Automatic parking brake	●	●	●
	Hydraulic pump	LS + FS	LS + FS	LS + FS
	flow rate/pressure (l/min – bar)	115 - 210	115 - 210	115 - 210
	Hydraulic tank	120	120	120
	Hydraulic outlet at the top of the boom	●	●	●
	Rear hydraulic outlets	○	○	○
CAB	Cab configuration	2004 Cab	2004 Cab	2004 Cab
	MCDC	-	-	-
	FOPS LIV II cab	●	●	●
	ROPS cab	-	-	-
	Cab commands	electronic joystick	electronic joystick	electronic joystick
	Tilting Cab	-	●	-
	Reverse shuttle	finger touch	finger touch	finger touch
CONFIGURATION	Cab suspension	-	-	-
	Boom suspension	-	-	-
	Suspension on axles	●	●	●
	Work headlights on cab	○	○	○
	Sun blind	○	○	○
	Tac-lock	●	●	●
	Provision for a platform	●	●	●
	Two floating forks	●	●	●
	Inching-Control	-	-	-
	four-wheel drive	●	●	●
	Four-wheel steering	●	●	●
	Three steering modes	●	●	●
	Standard tyres	18-22.5"	18-22.5"	18-22.5"
	Stabilisers	multiposition	multiposition	multiposition
	Turret rotation	continuous	continuous	continuous
	Type approval as an agricultural tractor	-	-	-
	Approval with PNEUMATIC braking (ton)	-	-	-
	Approval with HYDRAULIC braking (ton)	-	-	-
	PTO	-	-	-
	3-point linkage	-	-	-
DIM.	Width	2400	2400	2400
	Height	2950	2990	2950
	Length	6600	6980	6380
	Wheelbase	2970	2970	2970

- Not Available. ● standard. ○ optional.

LOAD CHARTS



NOTE - NOT ALL DEFINITIONS BELOW ARE VALID ON MODELS IN QUESTION. DEFINITION ARE JUST AN OVERVIEW FOR YOUR BENEFIT

DEFINITIONS

SCR	➤ Selective Catalyst Reduction, solution used for the reduction of NOx in the exhaust gases through the injection of a liquid - UREA (AdBlue) - into the exhaust gases.
DPF	➤ Diesel Particulate Filter, a solution used to reduce fine particle emissions in exhaust gases
DOC	➤ Diesel Oxidation Catalyst, a solution used to reduce carbon monoxide (CO) and hydrocarbons in exhaust gases
EGR	➤ Exhaust Gas Recirculation, a solution used to reduce NOx in exhaust gases by recirculating gas inside the combustion chamber of the engine.
1-2V	➤ 1 or 2 speed Merlo gearbox
CVTronic	➤ Continuous variation Merlo gearbox, for constant acceleration without loss of torque
EPD	➤ Eco Power Drive, Merlo electronically-controlled hydrostatic transmission Electronic, enables effective RPM management in order to reduce overall fuel consumption by the machine
EPD Plus	➤ in addition to the EPD Control, it is also possible to work using Speed Control (maintaining a constant travel speed) and Heavy Load (management of RPM in order to maximise performance for tasks such as: bucketing operations, heavy duty unloading, etc.)
EPD Top	➤ In addition to the EPD Plus control function, this enables the RPM to be managed directly using the joystick.
Gear	➤ fixed displacement pump with gears, combined with an open centre hydraulic distributor.
LS	➤ variable displacement pump with Load Sensing control, combined with a closed centre hydraulic distributor
LS + FS	➤ variable displacement pump with Load Sensing control, combined with a closed centre hydraulic distributor equipped with solenoid valves and Flow Sharing control.
ECO/PREMIUM cab	➤ MODULAR type cabin with simplified or PREMIUM equipment
MCDC	➤ Merlo Dynamic Load Control, electronic control of the machine's anti-overturn system.
• Light	➤ simplified version;
• Complete	➤ version with display in cab.
FOPS	➤ Falling object protective structure, the protection system which shields the operator from heavy objects falling onto the cab. Two levels:
• FOPS Liv I	➤ object with a weight of 45kg falling from 3 metres.
• FOPS Liv II	➤ object with a weight of 227kg falling from 5.2 metres.
ROPS	➤ Roll-over protection system (or roll-over protection structure), the system that protects the operator if the vehicle rolls over
Finger-Touch	➤ driving direction inversion system mounted on the steering column
Dual Reverse	➤ dual driving direction inversion system, on both the steering column and the joystick
Tac-lock	➤ hydraulic attachment clamping system controlled from the cab



MERLO S.P.A.

Via Nazionale, 9 - 12010 S. Defendente di Cervasca - Cuneo - Italia

Tel. +39 0171 614111 - Fax +39 0171 684101

www.merlo.com - info@merlo.com

