

P3814
0617 ITA



PANORAMIC P38.14 & P38.14PLUS

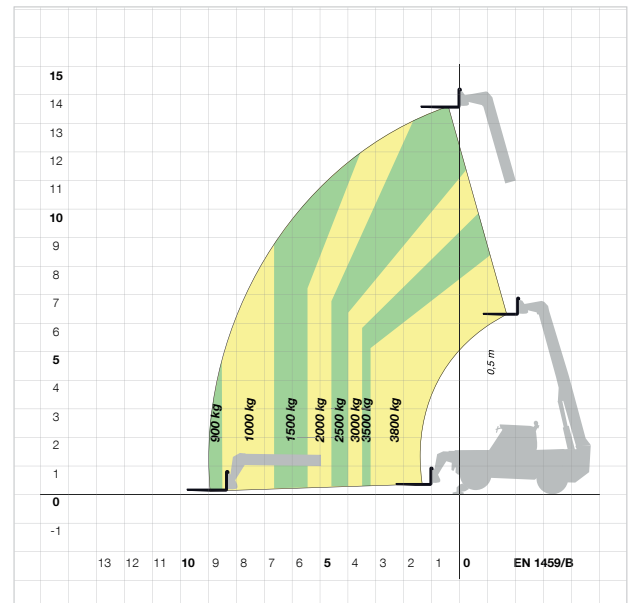


PERFORMANCE AND FEATURES		P38.14	P38.14Plus	
PERFORMANCE	Total unladen weight (kg)	9050	9050	
	Maximum capacity (kg)	3800	3800	
	Lifting height (m)	13,6	13,6	
	Maximum reach (m)	9	9	
	Maximum operating height (m)	8,5	8,5	
	Maximum operating reach (m)	3,3	3,3	
	Capacity at maximum height (kg)	2500	2500	
	Capacity at maximum reach (kg)	900	900	
	Lateral boom movement (mm)	+/- 345	+/- 345	
	Tilting correction (%)	+/- 10	+/- 10	
	Boom sections	3	3	
POWERTRAIN <>	Turbo motor	Deutz TD2.9	Deutz TCD3.6	
	Displacement/cylinders	2900/4	3600/4	
	Engine Power (kW/HP)	55/75	75/101	
	Anti-pollution technology	EURO IIIB, DOC	EURO IV, SCR+DOC	
	Reversible fan	-	-	
	Maximum speed (km/h)	33	40	
	Fuel tank (l)	140	140	
	AdBlue tank (l)	-	18	
	Hydrostatic transmission	● - 2V	● - 2V	
	EPD	-	Base	
	Axles	portal	portal	
	Reduction hub	RR640	RR640	
	Machine brakes	dry discs	dry discs	
	Automatic parking brake	●	●	
HYDRAULIC	Hydraulic pump	Load Sensing	Load Sensing	
	flow rate/pressure (l/min – bar)	115 - 210	110 - 210	
	Hydraulic tank	105	105	
	Hydraulic outlet at the top of the boom	●	●	
	Rear hydraulic outlets	○	○	
CAB	Cab configuration	2004 Cab	2004 Cab	
	MCDC	Light	full	
	FOPS LIV II cab	●	●	
	ROPS cab	●	●	
	Cab commands	2 levers	electromechanic joystick	
	Tilting Cab	-	-	
	Reverse shuttle	finger touch	finger touch	
CONFIGURATION	Cab suspension	-	-	
	Boom suspension	-	-	
	Suspension on axles	-	-	
	Work headlights on cab	○	○	
	Sun blind	○	○	
	Tac-lock	●	●	
	Provision for a platform	○	○	
	Two floating forks	●	●	
	Inching-Control	●	●	
	four-wheel drive	●	●	
	Four-wheel steering	●	●	
	Three steering modes	●	●	
	Standard tyres	405/70-20	405/70-20	
	Stabilisers	Narrow	Narrow	
	Turret rotation	-	-	
	Type approval as an agricultural tractor	-	-	
	Approval with PNEUMATIC braking (ton)	-	-	
	Approval with HYDRAULIC braking (ton)	-	-	
	PTO	-	-	
	3-point linkage	-	-	
DIM.	Width	2220	2220	
	Height	2440	2440	
	Length	5590	5590	
	Wheelbase	2750	2750	

- Not Available. ● standard. ○ optional.

LOAD CHARTS

P38.14 & P38.14PLUS



NOTE - NOT ALL DEFINITIONS BELOW ARE VALID ON MODELS IN QUESTION. DEFINITION ARE

JUST AN OVERVIEW FOR YOUR BENEFIT

DEFINITIONS

SCR	➤ Selective Catalyst Reduction, solution used for the reduction of NOx in the exhaust gases through the injection of a liquid - UREA (AdBlue) - into the exhaust gases.
DPF	➤ Diesel Particulate Filter, a solution used to reduce fine particle emissions in exhaust gases
DOC	➤ Diesel Oxidation Catalyst, a solution used to reduce carbon monoxide (CO) and hydrocarbons in exhaust gases
EGR	➤ Exhaust Gas Recirculation, a solution used to reduce NOx in exhaust gases by recirculating gas inside the combustion chamber of the engine.
1-2V	➤ 1 or 2 speed Merlo gearbox
CVTronic	➤ Continuous variation Merlo gearbox, for constant acceleration without loss of torque
EPD	➤ Eco Power Drive, Merlo electronically-controlled hydrostatic transmission Electronic, enables effective RPM management in order to reduce overall fuel consumption by the machine
EPD Plus	➤ in addition to the EPD Control, it is also possible to work using Speed Control (maintaining a constant travel speed) and Heavy Load (management of RPM in order to maximise performance for tasks such as: bucketing operations, heavy duty unloading, etc.)
EPD Top	➤ In addition to the EPD Plus control function, this enables the RPM to be managed directly using the joystick.
Gear	➤ fixed displacement pump with gears, combined with an open centre hydraulic distributor.
LS	➤ variable displacement pump with Load Sensing control, combined with a closed centre hydraulic distributor
LS + FS	➤ variable displacement pump with Load Sensing control, combined with a closed centre hydraulic distributor equipped with solenoid valves and Flow Sharing control.
ECO/PREMIUM cab	➤ MODULAR type cabin with simplified or PREMIUM equipment
MCDC	➤ Merlo Dynamic Load Control, electronic control of the machine's anti-overturn system.
• Light	➤ simplified version;
• Complete	➤ version with display in cab.
FOPS	➤ Falling object protective structure, the protection system which shields the operator from heavy objects falling onto the cab. Two levels:
• FOPS Liv I	➤ object with a weight of 45kg falling from 3 metres.
• FOPS Liv II	➤ object with a weight of 227kg falling from 5.2 metres.
ROPS	➤ Roll-over protection system (or roll-over protection structure), the system that protects the operator if the vehicle rolls over
Finger-Touch	➤ driving direction inversion system mounted on the steering column
Dual Reverse	➤ dual driving direction inversion system, on both the steering column and the joystick
Tac-lock	➤ hydraulic attachment clamping system controlled from the cab



MERLO S.P.A.

Via Nazionale, 9 - 12010 S. Defendente di Cervasca - Cuneo - Italia

Tel. +39 0171 614111 - Fax +39 0171 684101

www.merlo.com - info@merlo.com

