



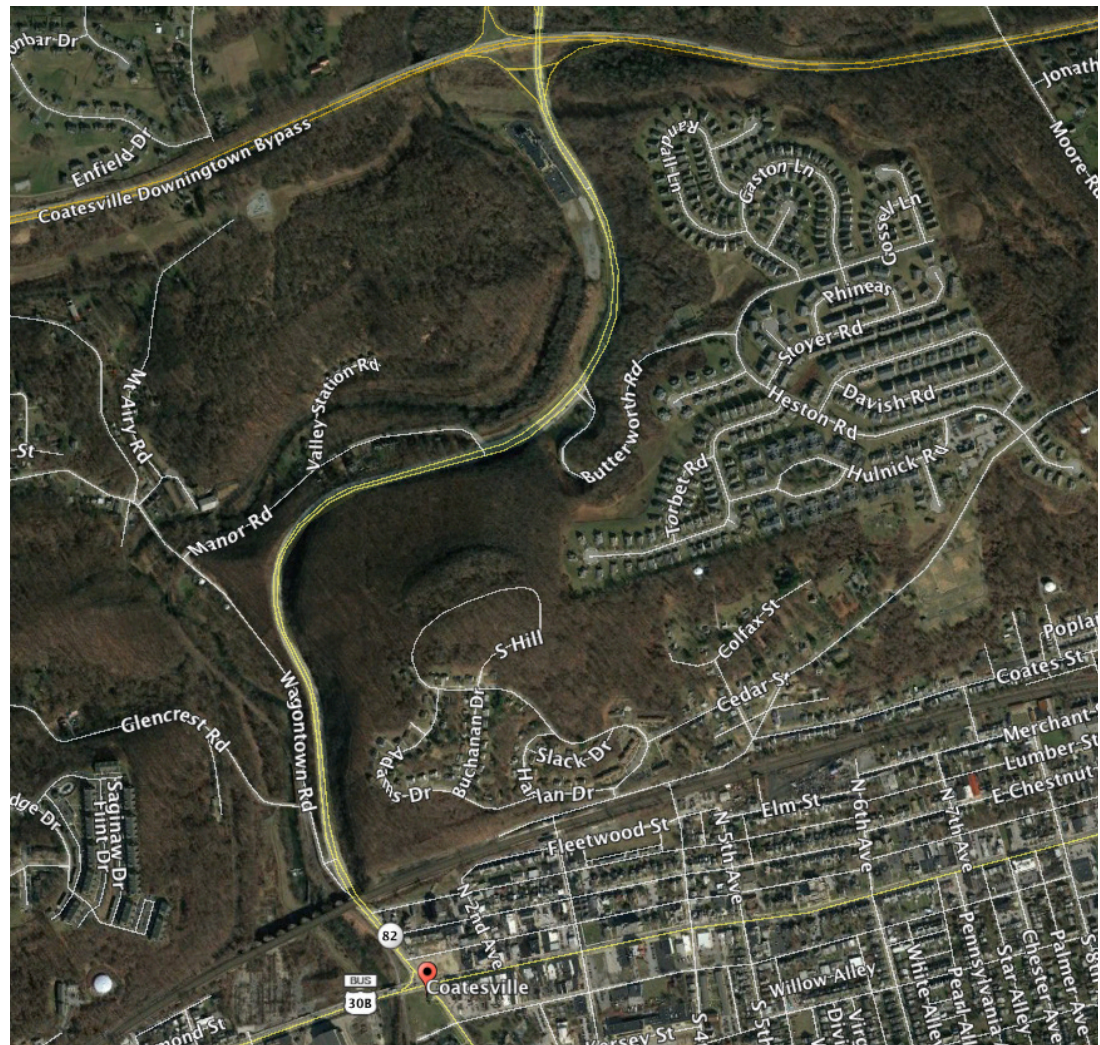
Directions to Coatesville

Business Rt 30, Lincoln Highway, will be closed from 1st Avenue to 8th Avenue, starting at 12 midnight on Friday, September 21st. Access into the City of Coatesville will be very limited if you are traveling from east of the city. It is best to use the Rt 30 Bypass to get into the city.

Lincoln Highway west of 1st Avenue, will be open, but because of the Lincoln Highway closure traffic will be backed up. Again it is best to use the Rt 30 Bypass to get into the city.

PA Turnpike Rt I-76 coming in from the eastern or western part of the state.

Turn off the Turnpike at Downingtown, exit 312. Exit the toll plaza then turn south on Rt 100 towards Exton. Take Rt 100 South to the intersection of Rt 113— about a mile. Turn right onto Rt 113 toward Downingtown. Continue on Rt 113 to the Rt 30 Coatesville Downingtown Bypass. Head west on the bypass to the Rt 82, Coatesville exit. Take Rt 82 , Manor Road, south to the intersections of 1st Avenue and Lincoln Highway. Cross over Lincoln Highway to the first road on your left, Harmony Street. You will be directed to park your trailer along Harmony Street .





2019 Driver/Rider Instructions

In just a few days you will take part in the fourth running of the Coatesville Invitational Vintage Grand Prix. Those of us on the event Committee wish to thank you for your participation and support in helping to make this a fun and successful event for everyone one attending it. Following are the instructions and details of the day's event as it pertains to you, the driver and riders of the Grand Prix and Lunchtime Touring groups.

ARRIVAL

The Paddock, located between 1st Avenue and Lincoln Highway, will be open at **6 AM**. We would like all race cars and motorcycles to be parked by 7AM so that we can conduct Tech Inspection which will start at 7AM and end 8 AM. **Lunchtime Touring entrants must be parked by 8:30 AM.**

TRAILER PARKING

All trailers will be parked along Harmony Street on both sides, from 1st Avenue to 3rd Avenue. There will be personnel and Police to direct you. Harmony Street is located one block south of Lincoln Highway. See attached map and layout of both the Paddock and trailer parking. We ask you to pull all the way up to 3rd Avenue to start the parking process. Please start parking on the **right side** of the street first. Please do not block City Hall Place road. Volunteer parking is located there and they will need access.

PADDOCK ACCESS FROM HARMONY STREET

There is a walkway between Harmony and Lincoln Highway (see diagram) that will give you access to the paddock, Once you have unloaded your car, you can drive it to the Paddock via the 1st Ave. race car return lane. Volunteers will direct you to the Paddock area. If you need assistance with equipment getting out to the paddock, or a tow, there will be several service vehicles in the parking area that can assist you. Just ask one of the volunteers stationed nearby.

PARKING IN THE PADDOCK

We will be parking all vehicles by run groups (see diagram). Closest to pit-out will be the motorcycles. We would like to park each group together if possible. **All vehicles will be angle parked** facing east on Lincoln Highway and pit-out. Please park as shown. Use both sides of the street for your run group. **Paddock staff will be there to assist you.**

The Lunchtime Touring Group will be parked closest to the **west** entrance to the paddock near 2nd Avenue (see diagram). Don't leave too much room between yourselves and the race cars. In the past this group parked a block away! Please move up in the paddock. If you need help with parking look for a paddock official.

WINDOW PLACARD

Included in this mailing is a **window placard** you can print out and place in your tow vehicle's windshield. It will help you get through the police line at 1st and Lincoln Highway. They have been made aware to look for it. **Lunchtime Touring entrants, please use the window placard to enter the paddock on arrival.**



Tech Inspection

TECH INSPECTION

Tech inspection starts at 7am and goes to 8AM. It takes place in the paddock. We will have several tech inspectors conducting the inspection of your vehicle. We do not have the facilities nor the time to conduct a full blown SCCA or VSCCA tech inspection.

We will be looking for the following:

1. Roll bars. Period correct open wheeled cars exempt.
2. Fire extinguisher mounted securely in the cars.
3. Seat belts or harnesses are secure.
4. All drivers have fire suits of some type and modern Snell approved helmets. Open face okay, with goggles.
5. Check for fluid leaks on all vehicles.
6. Check tires for cuts on side walls or excessive wear.
7. Check all vehicles that body work is secured and is not falling off.
8. Check wheel bearing play.
9. **Check that all waivers have been signed.** If they have not been signed, you must report to the registration tent before you will be allowed to run. No exceptions! You will not be given a PASS sticker until the waiver is signed. This also includes your crew member waivers. **Crew and passengers must sign the waiver too before they will be given wrist bands!**

As racers, we expect you make sure your car or motorcycle is safe to run at speed on our course. Your safety and the safety of the spectators is our biggest concern. Please come properly prepared to run in this event.

SIGN THE CITY WAIVER!

You must sign the City Event Waiver before you can pick up your credentials. Everyone must sign this waiver. **All "crew" and passengers with you must also sign this waiver before they will be given credentials. No Exceptions.**

CREDENTIALS:

You can pick up your Paddock Pass and wrist bands for both you and your crew at the **Registration Tent**, which will be located in the center of the paddock area. You are allowed only 3 crew members with you in the Paddock. No exceptions please. Anyone without a wristband will be asked to leave the area.



Run Group Schedule

8:15 RECONNAISSANCE LAPS, GRAND PRIX DRIVERS AND RIDERS ONLY!

This year we are giving you the option of taking part in the 8:15 recon laps of the course. Those drivers and riders who have driven here before do not have to take part, if they feel they know the idiosyncrasies of the chicanes, streets and roads of the course.

However, we highly recommend any one new to the event, take this opportunity to see the course layout prior to your run session. The roads and streets change! Remember, these are public roads and streets. They have man hole covers, dips, crowns and off camber turns. Any good driver will want to make mental notes as to where problem areas are, and be prepared for them once they are under speed.

DRIVERS MEETING 8:30ish

There will be a **mandatory drivers' meeting at the registration tent** located in the center of the Paddock. It will start promptly at **8:30am**. Be there on time please!

RUN GROUPS

There are 6 run groups this year:

- GROUP 1:** Open-wheel race cars
- GROUP 2** 4-Cylinder normally aspirated vintage race cars
- GROUP 3** 6-Cylinder normally aspirated vintage race cars
- GROUP 4:** 8-cylinder normally aspirated vintage race cars
- GROUP 5:** Vintage motorcycles
- GROUP 6:** Lunchtime Touring sessions for vintage non-race cars

RUN TIME STARTS:

Due to increased traffic openings, we are on a tight schedule so run times will be monitored. Sessions will run between 15 and 20 minutes. There will be a ten-minute break between run sessions for the police to allow traffic to cross the course at specific locations.

IMPORTANT! Please be aware of the checkered flag. You will get a **last lap white flag** towards the end of your session. Once you are given checker flag, **DO NOT** return back to the Start/Finish line. Flaggers will direct you with a **Pit In Now!** sign. Return to the Paddock via the 1st Avenue return lane. **NO SPEEDING** is allowed in the return lane at any time.

TIMING

Electronic timing will be working this year. At tech inspection, you each will be given a transponder with your information programed into it. Tech personnel will mount your transponder on your car or motorcycle where it will best suited for detection. A timing tent will be stationed at the Start/Finish line. You can check your times there.

Please return your transponder to the Registration Tent after the event. Thank you!



A Few Last Words

BLACK FLAGS

If you are black flagged during your run session you need to go straight to the paddock to meet with the GP Track Official. Failure to do so will get you stopped for the day. Once you are in the paddock the GP Track Official will tell you what your infraction was. He will then release you back into the session, if it is still active. If you are black flagged again for the same infraction you will be stopped for the day.

LUNCHTIME TOURING "PASSENGERS"

Lunchtime Touring entrants can have 3 people in the paddock with them. However, **only one person is allowed in the car during the run session.** This is a safety issue. While Lunchtime Touring is Pace Car led, it still takes concentration to get through all the chicanes and the course. We can not have the drivers distracted while driving the course. We hope you understand. Any car observed with more than one passenger in it will be asked to return to the paddock.

AWARDS

Awards will be given out at about 2:45 PM. We ask that you consider staying around for the awards and supporting all the drivers and riders. If time allows, all the winners will be asked to bring their cars or bikes to the Start/Finish line for the presentation of the awards.

FREE FOOD!

There will be sandwich plates and water (as long as it lasts) available in the Army/Navy Store behind the Registration Tent in the paddock for all the drivers and riders. Please help yourselves to bit to eat.

VENDOR AREA

Other food and drink, for purchase, will be available in the vendor area on N.3rd Ave. near the pit out exit. **No driver will be allowed to buy beer or wine until after the event is over.**

PLEASE USE YOUR HEAD!

While there will be lap timing, this event is meant to be a fun and safe. We discourage reckless and over the limit driving. Those abusing this request will be black flagged. A second black flag will result in removal from the event.

We want you to have fun, but more importantly we want you to bring both your car and yourself back in one piece. We also have spectators and property to be careful about as well. Please, don't be the person who ends this event! Use your head!!

There will be police, fire and emergency equipment present, should anything happen.

Last year we had a great time, and the event was a big success for everyone involved. We would like very much to continue that this year.

We thank you all for your understanding and cooperation.

For questions contact Denis Branca at: denisbranca@earthlink.net

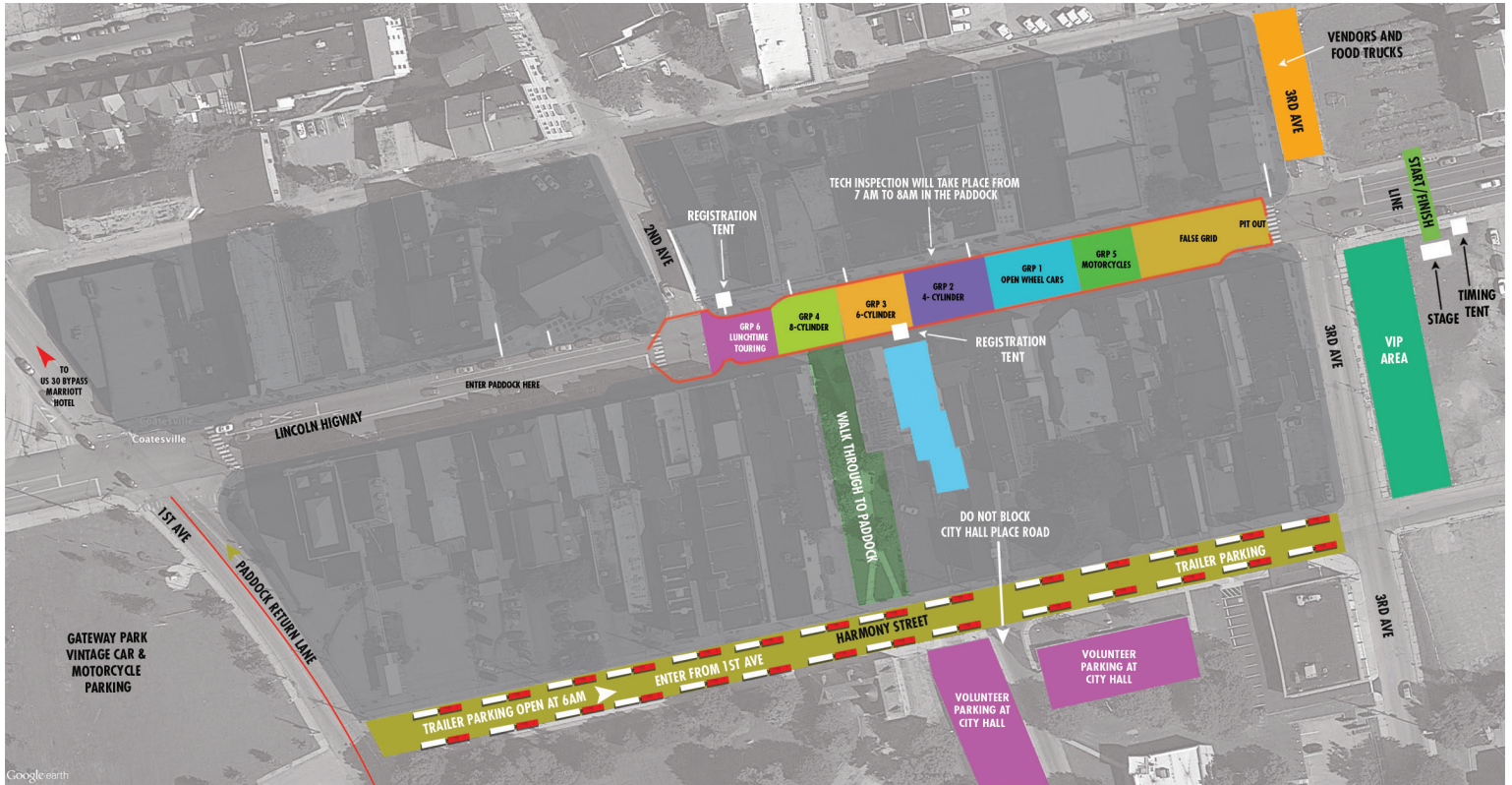


2019 CIVGP Schedule of Events

Paddock	—	Opens at 6:00 AM
Vendor/Food	—	Opens at 10 AM
VIP Area	—	Opens at 8:AM
Classic Car Parking	—	Opens at 7:30AM at Gateway Park
6:00 to 7:30 am	—	Harmony Street open to transport trailers. Cars and motorcycles to the paddock
7:00 am	—	Vintage car parking opens at Gateway Park
7 to 8:00 am	—	Tech Inspection — Paddock Area. All Drivers/riders pick up credentials and sign waiver at Registration Tent in Paddock Area.
8:10 am	—	All GP drivers/riders to Start/Finish line.
8:15 to 8:25 am	—	10 minute reconnaissance laps of course. No laps required for Lunchtime Touring.
8:30 to 8:55 am	—	Color guard, National Anthem, speeches.
8:30 to 8:45 am	—	Mandatory (all) drivers meeting at Grand Prix Headquarters.
8:55 am	—	Group 1 — Open wheel cars to false grid.
9 :00 to 9:20 am	—	Group 1 — Run session active.
9:20 to 9:30 am	—	Traffic opens for 10 minutes.
9:20 am	—	Group 2 — 4 cylinder cars to false grid.
9:30 to 9:50 am	—	Group 2 — Run session active.
9:50 to 10:00 am	—	Traffic opens for 10 minutes.
9:55 am	—	Group 3 — 6 cylinder cars to false grid.
10:00 to 10:20 am	—	Group 3 — Run session active.
10:20 to 10:30 am	—	Traffic opens for 10 minutes.
10:20 am	—	Group 4 — 8 cylinder cars to false grid.
10:30 to 10:50 am	—	Group 4 — Run session active.
10:50 to 11am	—	Traffic opens for 10 minutes.
10:50 am	—	Group 5 — Motorcycles to false grid.
11:00 to 11:20 am	—	Group 5 — Run session active.
11:20 to 11:30 am	—	Traffic opens for 10 minutes.
11:20 am	—	Group 1 — Open wheel cars to false grid.
11:30 to 11:50 am	—	Group 1 — Run session active
11:50 to 12pm	—	Traffic opens for 10 minutes.
11:50 am	—	Group 6 — Lunchtime Touring cars to false grid.
12:00 to 12:20 pm	—	Group 6 — Run session active.
12:20 to 12:30	—	Traffic opens for 10 minutes.
12:20 pm	—	Group 2 — 4 cylinder cars to false grid.
12:30 to 12:50 pm	—	Group 2 — Run session active.
1:50 to 1:00 pm	—	Traffic opens for 10 minutes.
12:50 pm	—	Group 3 — 6 cylinder cars to false grid.
1:00 to 1:20 pm	—	Group 3 — Run session active..
1:20 to 1:30 pm	—	Traffic opens for 10 minutes.
1:20 pm	—	Group 4 — 8 cylinder cars to false grid.
1:30 to 1:50 pm	—	Group 4 — Run session active.
1:50 to 2 pm	—	Traffic opens for 10 minutes.
1:50 pm	—	Group 5 — Motorcycles to false grid.
2:00 to 2:20 pm	—	Group 5 — Run session active.
2:20 to 2:30 pm	—	Traffic opens for 10 minutes.
2:30 pm	—	All sessions end. Traffic opens, on all streets except from 1st Ave to 4th Ave.
2:45 to 3 pm	—	Awards at Start/Finish Main Stage
3:00	—	Begin to clear Paddock.



Trailer and Paddock Parking





3rd Avenue Speed Reduction Chute

There will be a Speed Reduction Chute located at the corner of 3rd Avenue and Lincoln Highway, just before entering the Start/Finish line. Speed through this area will be reduced to 20 MPH. An electronic radar sign will be located just before the entrance to the chute so you can adjust your speed accordingly.

Please be aware of this area! The chute is narrow. Pay special attention when exiting the chute onto the Start/Finish line. Loose hay can be slippery. We will take every precaution to make sure this area is free of debris, but it is up to you to be careful through here. Resume speed **after** you have cleared the chute exit.

