

Architecture Portfolio

Jonah Rosenberg

Architecture and The journey to today

Architecture and Model Design

Cubstic Revolution

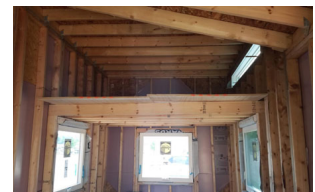
Sycamore High School

Experience of architecture in High School revealed in depth artistic expressionist styles presented within architecture. Learning more relating to mechanical and structural aspects of building design provided a great start toward my collective collegiate studies. Leading the design and build team for my fourth year project provided real world hands-on experience of achieving architecture. For the Scholastics Art and Writing model design competition depicted, I received a Silver Key Award for *Cubstic Revolution*.



Architecture and The Space We Create

The construction of a functioning tiny home. I presented the project before community members and local professionals in construction and architecture. The team received a grant and sponsorships to build this tiny house on a mobile unit. My fourth year in high school, both in class and as president of our Architecture Club, Leading a team to build and install the exterior framing and structure of the fully functioning tiny house.

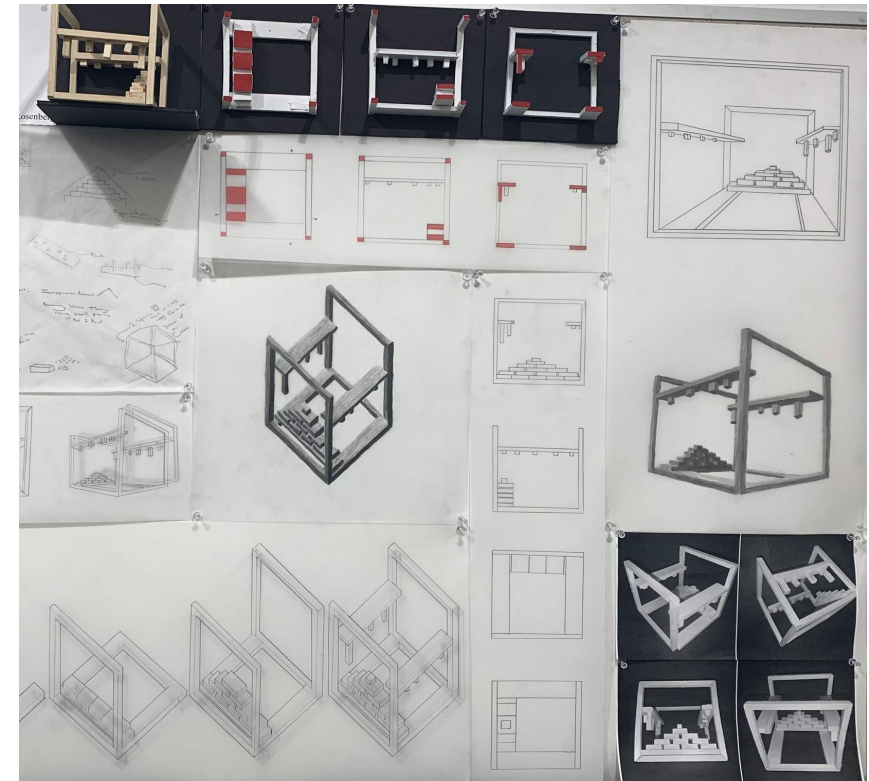
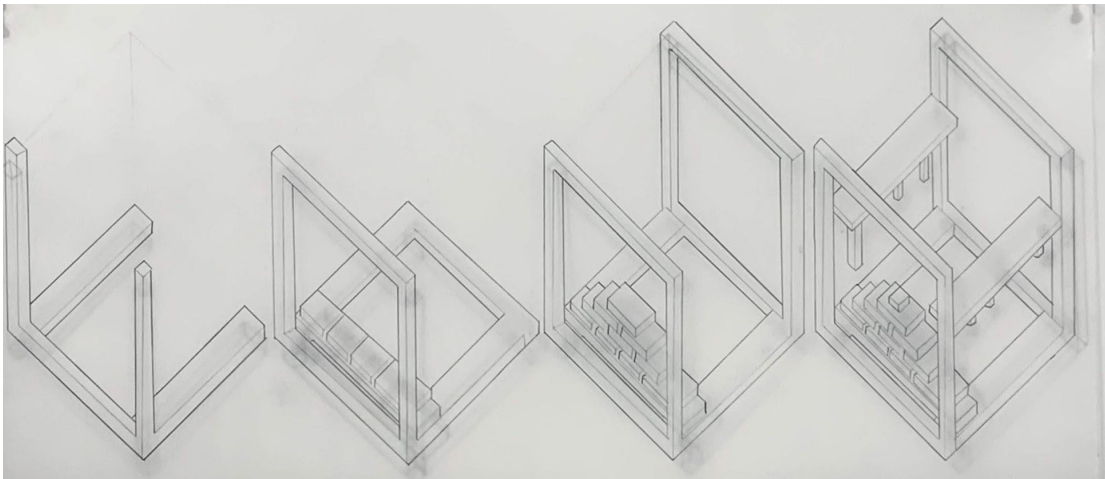
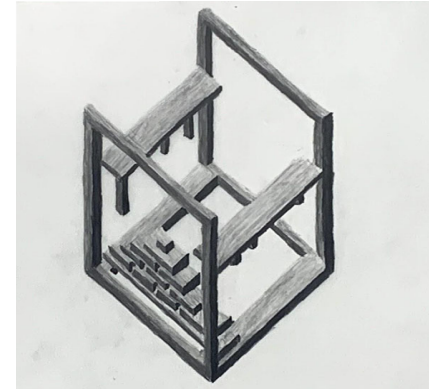


Jonah Rosenberg

Architecture, Mathematics, and Philosophy

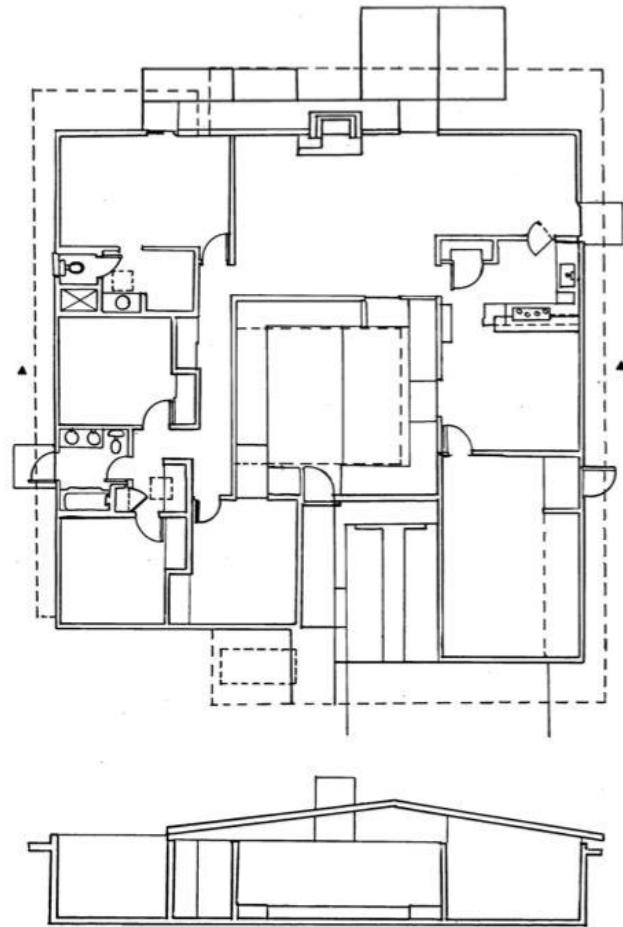
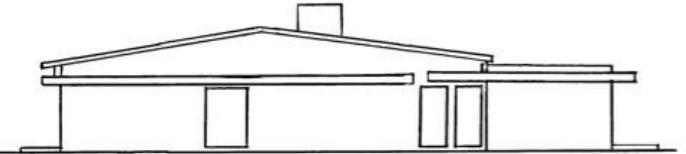
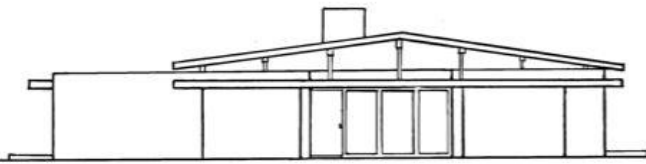
Cartesian Grid Study

Including design interpretations of René Descartes' work utilizing his cartesian grid innovation. Research on his findings provided an deep appreciation of his contributions toward today's sciences and present views of society. These models depict abstractions of analytical geometry's place in modern society along with a greater design illuminating the foundation of modern and classical westernized philosophies.

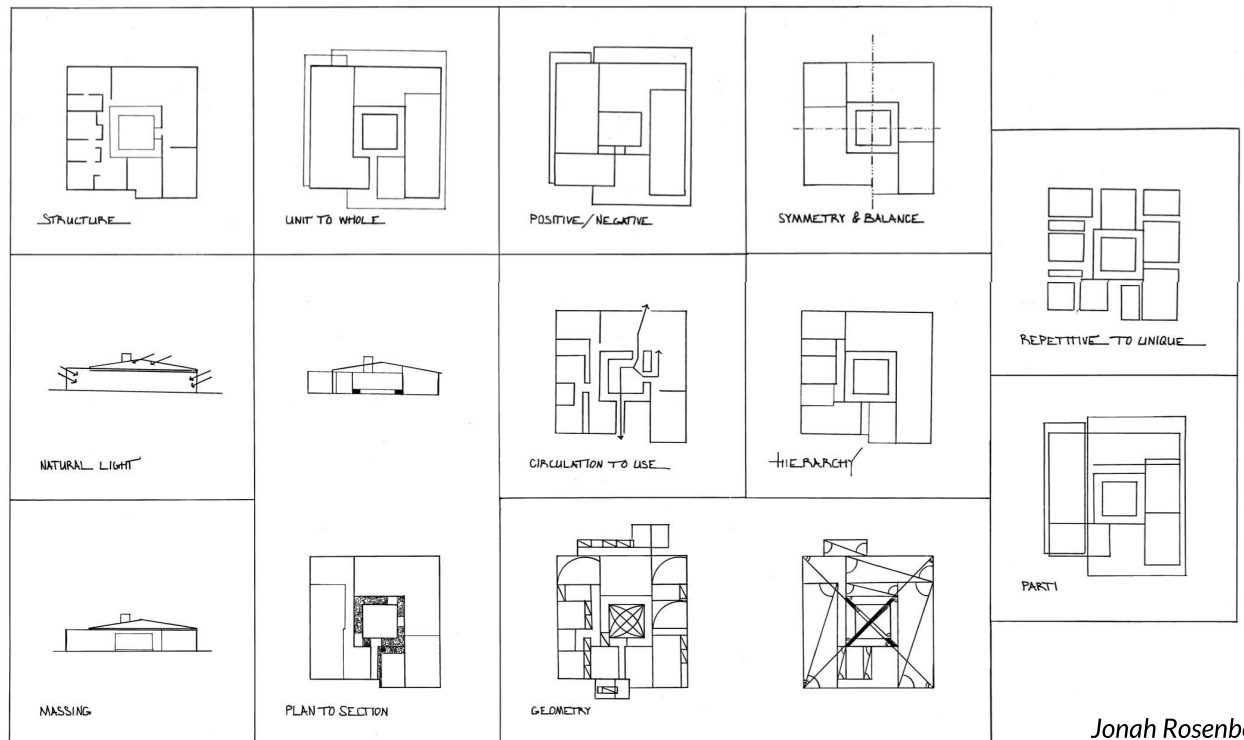


Architecture and Private Client Design

Architect Research and Analysis

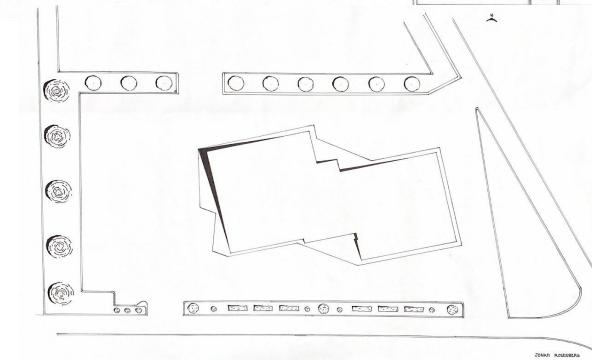
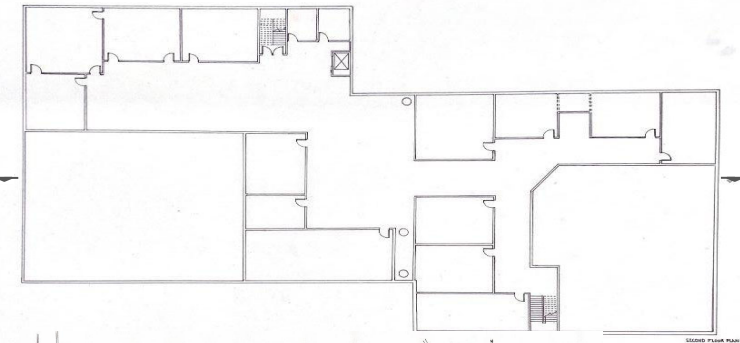
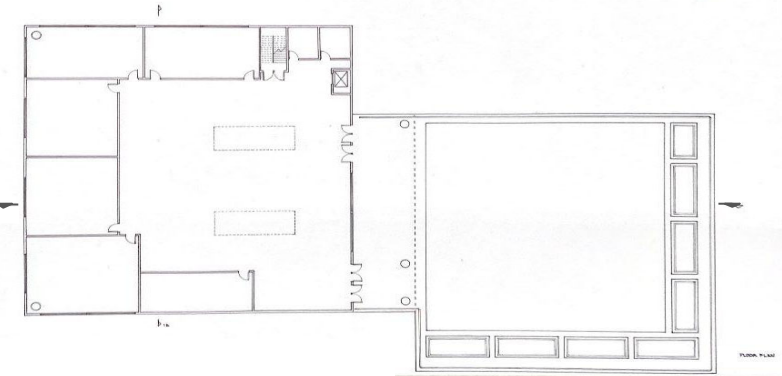
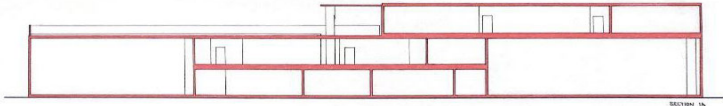


The building depicted here is the *Courtyard House* by A. Quincy Jones. Utilizing the most recent of materials, he provided structures that were advanced for the 1950's and 60's. Including natural elements, his homes set precedence and became revered for their originality.



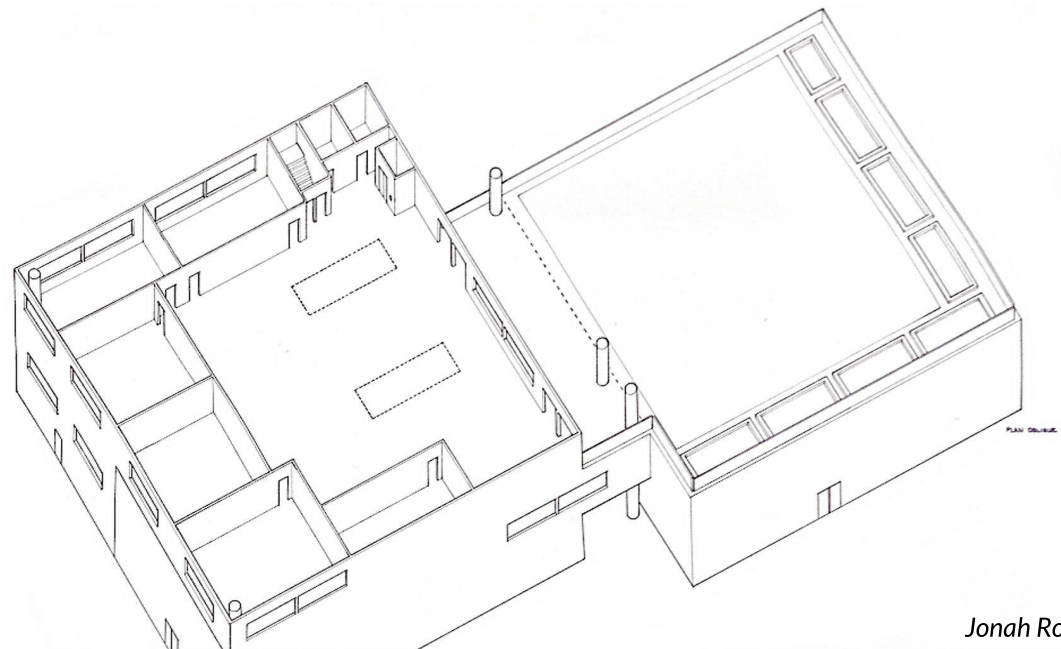
Architecture and Higher Education

School Addition



Designing spaces that are interactive, inviting, and provide exemplary learning and teaching vicinities designed for more productive learning experiences. Presenting open air additions and a top floor maximizing natural light. These hand drawings represent an extension to a grand rooftop terrace and outdoor classroom. Intended to actively incorporate more intuitive styles of learning into their educational framework.

Relating experience into educational settings; adapting to our responsive awareness when nature is present.



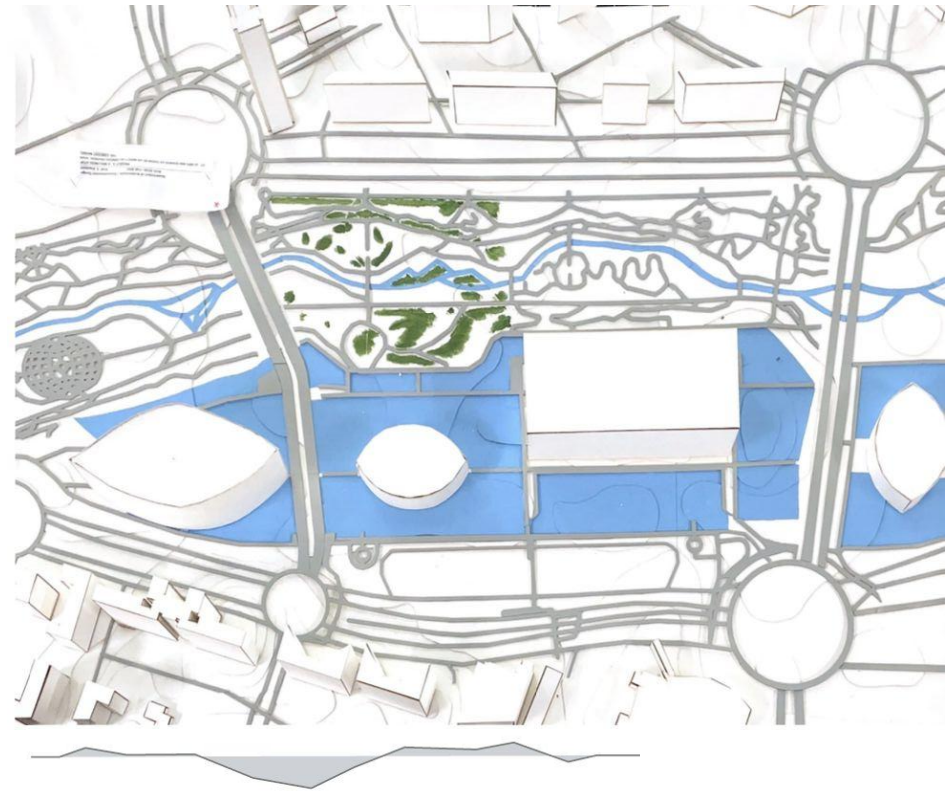
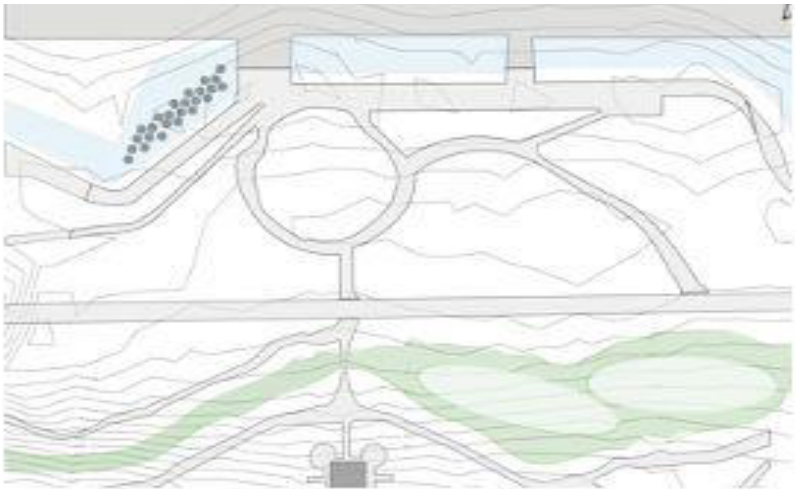
Architecture and Well-Being

Land Within

City of Arts and Sciences, Valencia

In solace we find comfort of presence and peace; solitude brings upon a togetherness with who you are and has the potential to restore important ancestral customs. For peace and comfort are our roots in spiritual practice and are the precise significance for our mental well-being. When connecting to our roots, we find we can accomplish the most with our well-being.

The structure exists both below and above ground level covered by native prairie to Spain. The roof vicinity provides for a walkable relaxation and meditation area while distinguishing the area from the surrounding architecture; adding to the existing local biota, history, and urban setting.



Architecture, Music, and Culture

The Found Sound

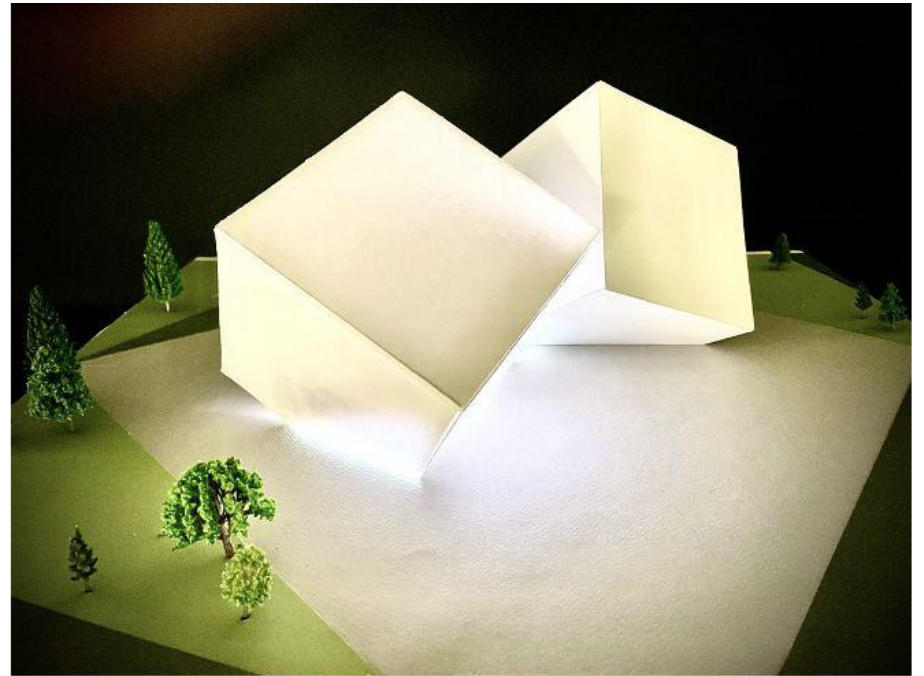
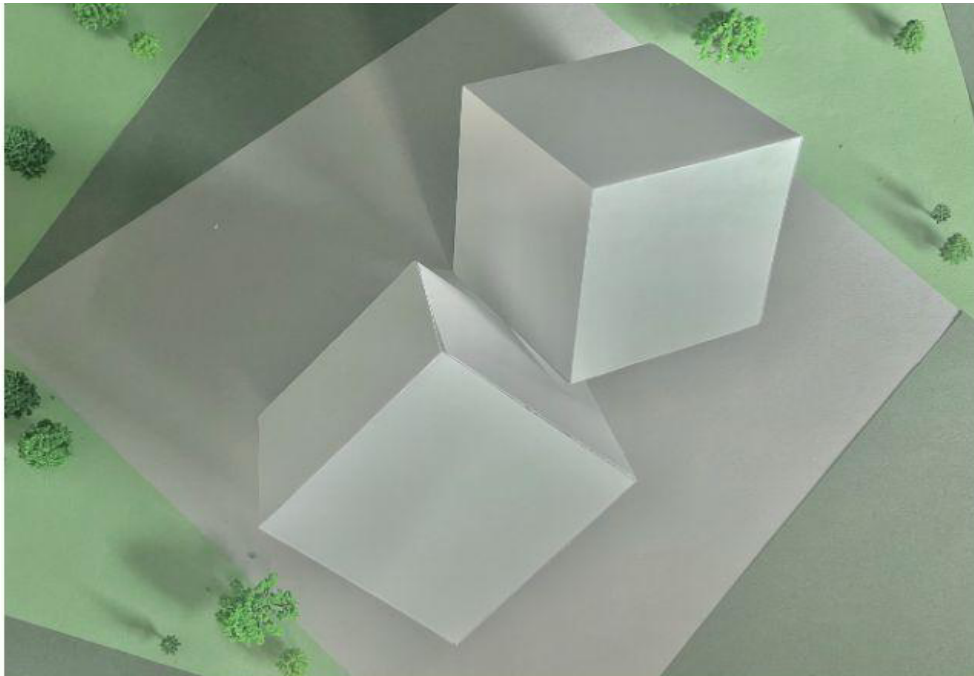
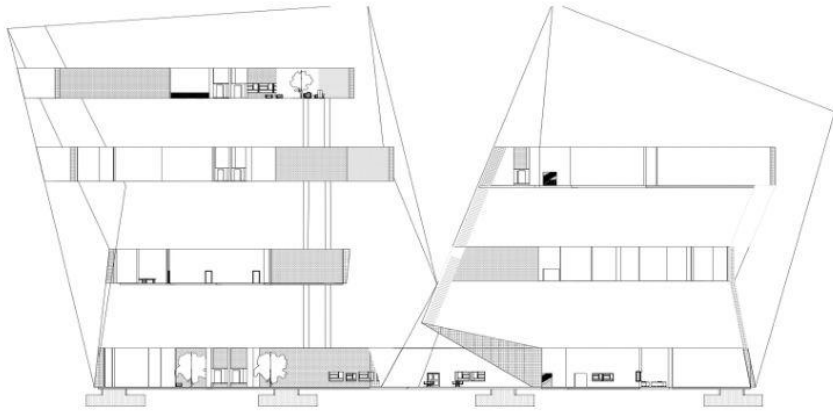
Immersion and interactions within built environments are able to shape our experience of life. Enhancing perspectives of society, perception, and the immense networks we are included within. To reflect on our immense experiences, we are gifted with the ability to contemplate the theories, beliefs, and notions that encompass our perceptual existence.

In order to become more educated on the topics that relate to who we are and our roots as beings, we may find the effect of the ability to reflect to be of most importance. Interests akin to music, rhythm and art have a captivating array of roots to who we have become. For both spirituality and science are rooted in these primordial structured senses of the environment. Having enhanced our evolution as society, advanced our world, and strengthened cultural significance.



Architecture, Rhythm, and Harmony

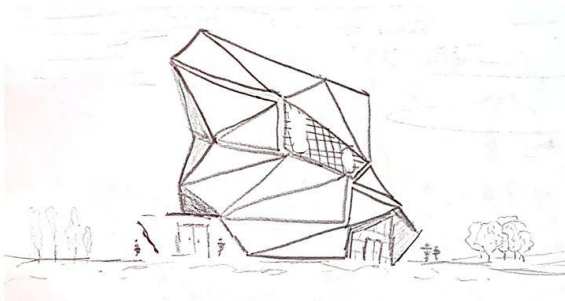
The Found Sound



Architecture and Space

Multidimensional Definition

The prospect of seeking to embrace a more purposeful design is intrinsic. By emphasizing the dimensionality architecture brings about in life, we are bringing forth intellectual introspective discussion of experiencing the nature of duration. Skillfully presenting a space creating dynamic and engaging interactions with its own environment. Interplay of heights, depths, and precise angular planes allows for higher sensory experiences within. Navigating the design brings about an illusory sensory experience of being within a structure. Blurring boundaries being between both interior and exterior architecture. This design embraces conventional practice and emanates the relationships we encourage between light and shape. Creating an interpretive connection between a built environment and the beyond world.



Architecture and Urbanism

Toledo of Tomorrow

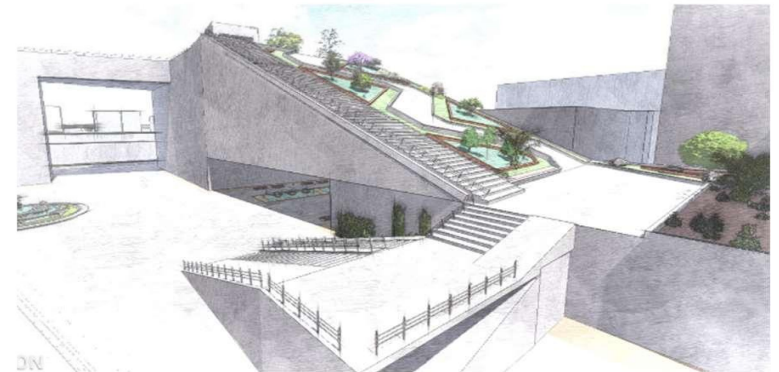
A reflection of history; a depiction of Tomorrow.

Within the present moment, the future is written in today's experiences. It is noticed that what is to exist is found in what is presently existing. Progress is surrounding and encompassing today, for an evermore efficient, sustainable, progressive and everlasting Tomorrow.

Advancements in bringing agriculture to cities illuminates the lives of those within. Architectural determinism states enhancing our cities enhances our lives. Enhancing our cities for the future creates network connections with the materiality of duration.

Presence in the momentary wonders of today are the memories, history, and understandings of our occurrences.

While are the aspirations of Cities; a convergence of undefined network connections and perception of presence. Yearn for a greater presence, journey for a greater Tomorrow.

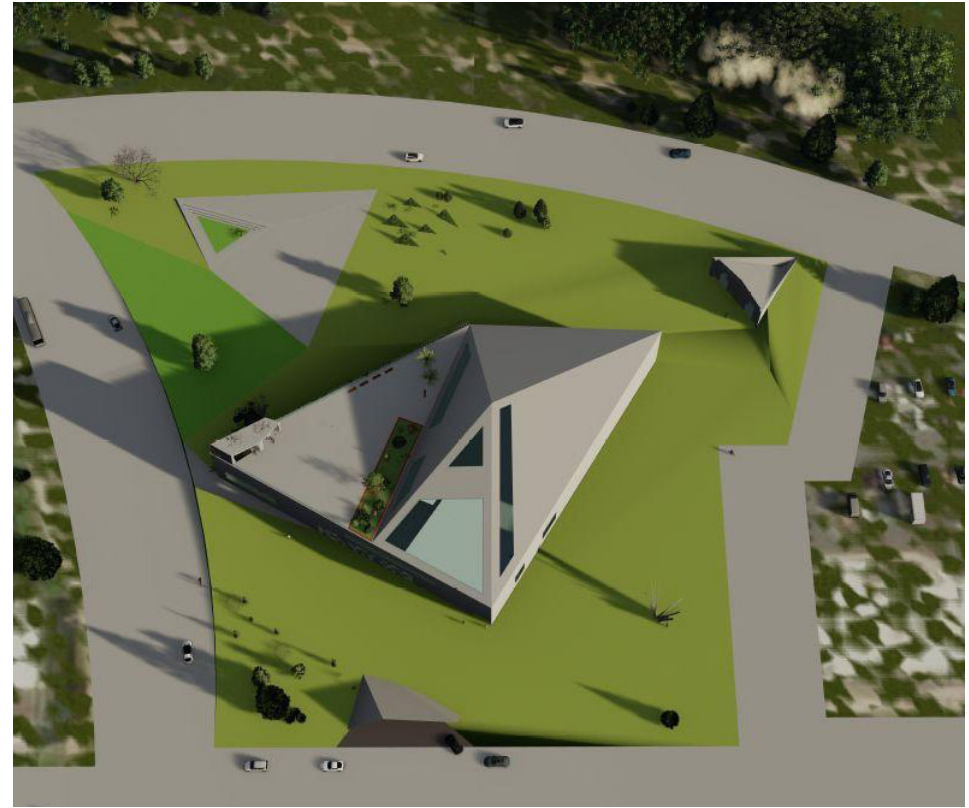
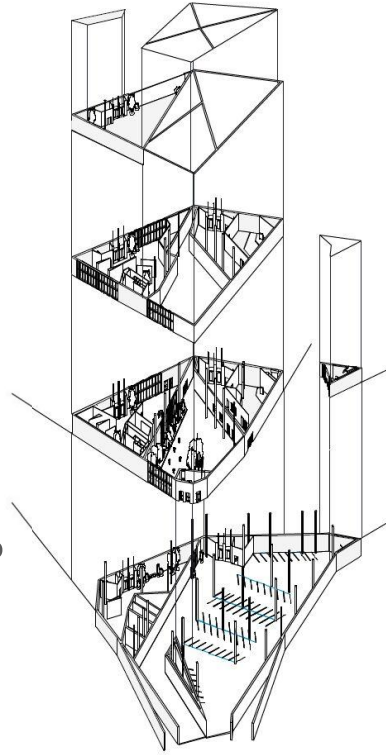


Living Whiled

Alike to a tree, a built environment expands. From an idea, to paper, to a space of its own creation. Like a tree, we grow. We grow as people, in a more literal literary sense, and as designers of the vestibules of the future. Like a great novel or a work of art, the introduction and frame are said to be most important; these we touch and sense first.

To enter is to perceive. We are able to easily perceive finite things in an infinite space, able to interact with environments and create the future. The notion of being finite and undefined in nature, definable yet infinite in who we are.

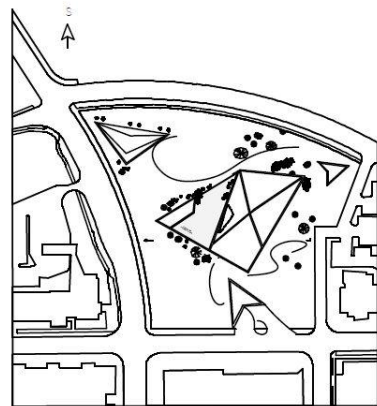
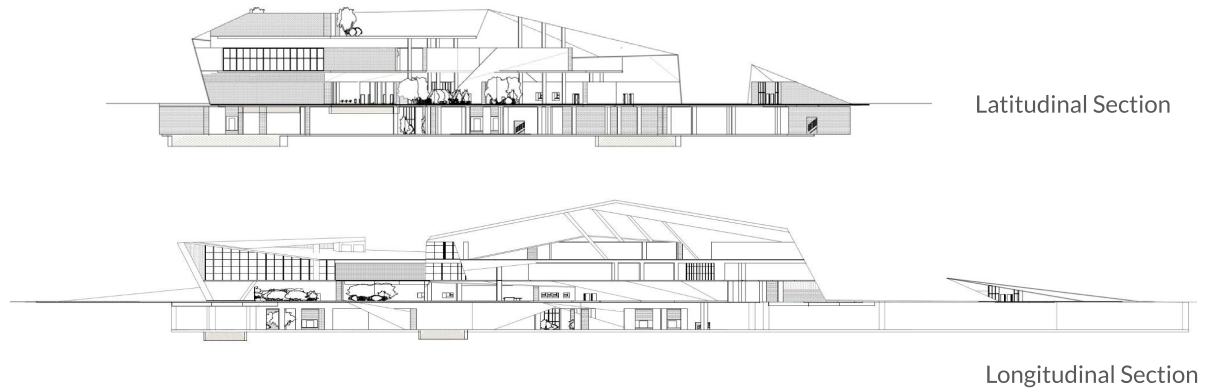
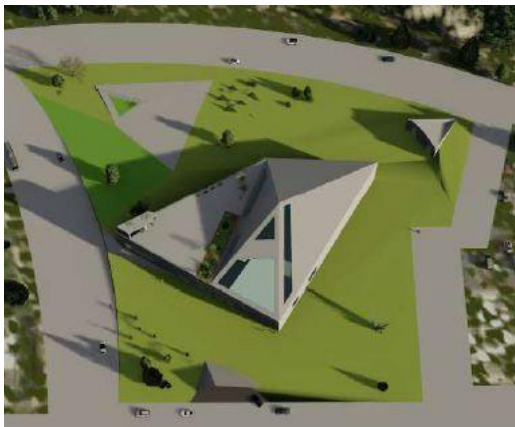
Living Whiled.



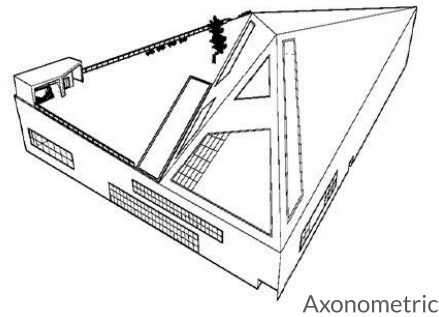
Architecture and Unity

Living Whiled

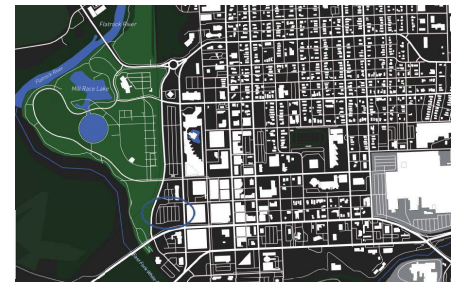
Columbus, (With) IN



Site Sketch



Axonometric

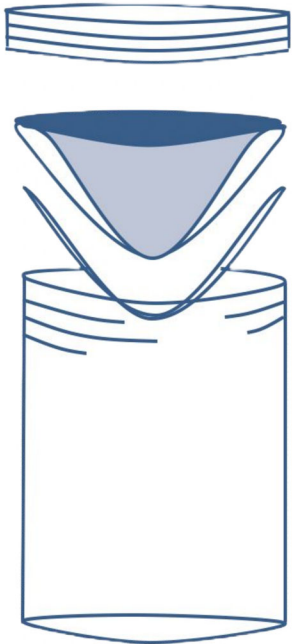


Jonah Rosenberg

Architecture and Longevity

WHILED JAR®

A Whiled Jar's proprietary patent-pending lid allows prolonged shelf life for our most common food items. The lid's curvature compresses food items by pressing filled liquid items up while letting air out. When combined with a common density vacuum seal and pressurized storage, a Whiled Jar allows for greater longevity; making food items stored within exclusively efficient and more durable. Longer storage brings greater possibilities and less food waste. Higher efficient storage brings cost and energy savings while assisting in a more safe and sustainable future of food storage.



Jonah Rosenberg

Architecture and *Jonah Ari Rosenberg*



The works presented here are of my own ideations, designs, and unique conceptual framework. The drawings, renderings, and models depicted are all hand drafted, computer generated, accomplished, and contain original works by Jonah A. Rosenberg.

Copyright © 2019 - 2024 Jonah Rosenberg - All Rights Reserved.

Nature + ONE8

