

-  facebook.com/mercedesbenzusa
-  linkedin.com/company/mercedes-benz-usa
-  instagram.com/mercedesbenzusa
-  twitter.com/mbusa
-  youtube.com/mbusa

The rewards of striving to be the best are even more meaningful in the development of our youth than they are in automobiles. That's why Mercedes-Benz USA is committed to educating and empowering the next generation of diverse leaders. To help equip them with the tools for success, MBUSA partners with two national organizations that invest in the futures of young people in communities across the country. As a Mercedes-Benz driver, you become a part of this effort to give hundreds of thousands of youth a better life today, and all of us a brighter tomorrow. *Learn more about how Mercedes-Benz USA gives back at MBUSA.com/community*



A nationwide network of youth sports programs, Laureus Sport for Good USA is focused on improving the health, education, employment and social cohesion of youth in underserved communities. Since 2012, Laureus USA has helped nearly half a million young people in 150 cities, and has supported the training of more than 8,000 coaches who serve as mentors in their communities. *To learn more, visit laureususa.com*



Johnny Mac Soldiers Fund helps to honor military service and sacrifice by providing scholarships to veterans and military family members, particularly the children of our nation's fallen and disabled. Since 2014, Johnny Mac has awarded over \$7.5 million in scholarships to more than 1,000 students. *To learn more, visit johnnymac.org*

©2018 Mercedes-Benz USA, LLC • One Mercedes-Benz Drive, Sandy Springs, GA 30328 • 1-800-DRIVER2121 • MBUSA.com
 Marketing Communications. All illustrations and specifications contained in this brochure are based on the latest product information available at the time of publication. Mercedes-Benz USA reserves the right to make changes at any time, without notice, to colors, model fits, equipment, specifications and models. Any variations in colors shown are due to reproduction variations of the printing process. Illustrations may include test situations. Some vehicles may be shown with non-U.S. equipment. Some vehicles are shown with optional equipment. Apple, CarPlay, iOS, iPhone and Siri are trademarks, registered trademarks or service marks of Apple Inc. Bluetooth is a registered trademark of Bluetooth SIG, Inc. Computer is a registered trademark of Bismarck Audio Systems GmbH, Berlin, Germany. Android and Android Auto are trademarks of Google Inc. HD Radio is a proprietary trademark of iBiquity Digital Corporation. Sirius, XM and all related marks and logos are trademarks of Sirius XM Radio Inc. LinkedIn is a registered service mark of LinkedIn, Inc. Twitter is a registered trademark of Twitter, Inc.



MG41647 21

C

CLASS

2019
 SEDAN / COUPE / CABRIOLET



2019

C

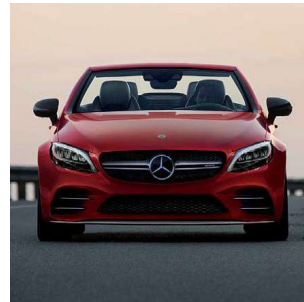
No looking back. As a philosophy, it sounds bold, even brash. But humans learn a lot from taking stock of where we've gone, and how it's shaped us. Some of what's behind us helps us envision what's ahead—and makes us look forward to it. Now, what if reinventing the future is a big part of your heritage? For Mercedes-Benz, it's an inspiration to drive the future of driving. For a car like the C-Class—the best-selling nameplate in its class—it means just being good isn't good enough. Every year, it must be not just better than before, but the best at defining what's next. For 2019, the C-Class leaps a technological generation ahead to make driving easier, safer, more enjoyable, and even more colorful. It raises the standards set by its acclaimed cabin with new displays, new connectivity, and new responses to your touch and your voice. And it wraps it all in fresh new styling. So you'll look forward to driving it. And when you're done, you'll look back to admire it.

C 300 and C 300 4MATIC SEDANS, COUPES and CABRIOLETS

AMG C 43 SEDAN, COUPE and CABRIOLET

AMG C 63 and AMG C 63 S SEDANS, COUPES and CABRIOLETS

WHAT DO YOU DO WHEN YOU'RE ALREADY
ADVANCED, ACCLAIMED, AND AHEAD OF THE
CROWD? IF YOU'RE THE C-CLASS SEDANS,
COUPES AND CABRIOLETS, YOU ACCELERATE.



Key Features	06
Model Overview	09
Packages	21
Sedans	22
Coupes	28
Cabriolets	34
AMG models	40
Build Your Own	50
Ownership	56



Standard and available equipment may vary by model. Please see back of brochure.



KEY

PERFORMANCE



Inline-4 turbo, AMG-enhanced V6 biturbo, or handcrafted AMG V8 biturbo engine

Rear-wheel drive, 4MATIC® all-wheel drive, or AMG Performance 4MATIC*

9G-TRONIC, AMG SPEEDSHIFT® TCT, or AMG SPEEDSHIFT MCT 9-speed transmission

DYNAMIC SELECT drive modes

4-wheel multilink suspension with selective damping, or AMG RIDE CONTROL Sport Suspension with 3-stage damping

DESIGN



LED headlamps and taillamps, LED Intelligent Light System,* and 64-color LED ambient cabin lighting*

17" to 20" alloy wheels**

A variety of grille designs, all integrating the iconic Star

AMG Line and Night Package (C300)*

AMG Aerodynamics, Carbon Fiber, Night and Performance Studio Packages (AMG models)*

Power sunroof (sedans), Panorama roof (sedans* and coupes), or 3-layer fabric power soft top (cabriolets)

SAFETY



Rearview camera, or multicamera Surround View System*

PRE-SAFE® ATTENTION ASSIST® and Mercedes-Benz Emergency Call

Radar-based Active Brake Assist collision mitigation

Blind Spot and Lane Keeping Assists*

Pioneering active safety suite* including Active Distance Assist DISTRONIC®, Active Lane Change Assist, Active Speed Limit Assist, PRE-SAFE PLUS, and more

Pop-up roll bars‡ (Cabriolets)

LUXURY



Burmester® Surround Sound*

Power driver seat with memory

Split-folding rear seats

Digital dual-zone climate control with dust and odor filters

Heated and ventilated front seats*

AIRSCARF® neck-level heating, AIRCAP system* (cabriolets)

A wide selection of hand-fitted upholstery, and gloss or natural grain wood cabin trims (plus carbon fiber or fiberglass for AMG models)*

TECHNOLOGY



Touch Control Buttons on steering wheel, 7" or 10.25" color center screen* and central controller

12.3" digital instrument cluster*

Apple CarPlay™ and Android Auto

COMAND® or accessory SD card-based navigation options*

Mercedes me connect featuring smartphone app with Remote Start, 4G LTE WiFi, and more‡

Wireless phone charging*

Active Parking Assist*

FEATURES

*Optional or not available on some models. Please see features and endnotes at back of brochure.



Introduction dates of models and some features may vary. Please see your dealer or MBUSA.com.

LEAP OF

THE CAR OF TOMORROW WILL BE MORE PREDICTIVE, MORE PROACTIVE, MORE PROTECTIVE. IF IT'S ALSO MORE SEDUCTIVE, IT WILL BE LIKE THE C-CLASS YOU CAN DRIVE TODAY.

FIVE SPORTY SEDANS grow more athletic for 2019, starting with a new turbo engine in the C300. All feature new styling details and 100% LED lighting. And all are more intelligent, from standard smartphone integration to new options that help make any journey a joyride.

FIVE COUPES and **FIVE CABRIOLETS** offer sport seating for four, with special rewards for the one in the driver seat. New controls and displays connect you to agile handling and abundant torque. A glass Panorama roof or power convertible top let you reach for the sky.

C-CLASS MODELS

C300 Sedan, Coupe, Cabriolet
New 255-hp inline-4 turbo
Rear-wheel drive

C300 4MATIC Sedan, Coupe, Cabriolet
New 255-hp inline-4 turbo
4MATIC® all-wheel drive

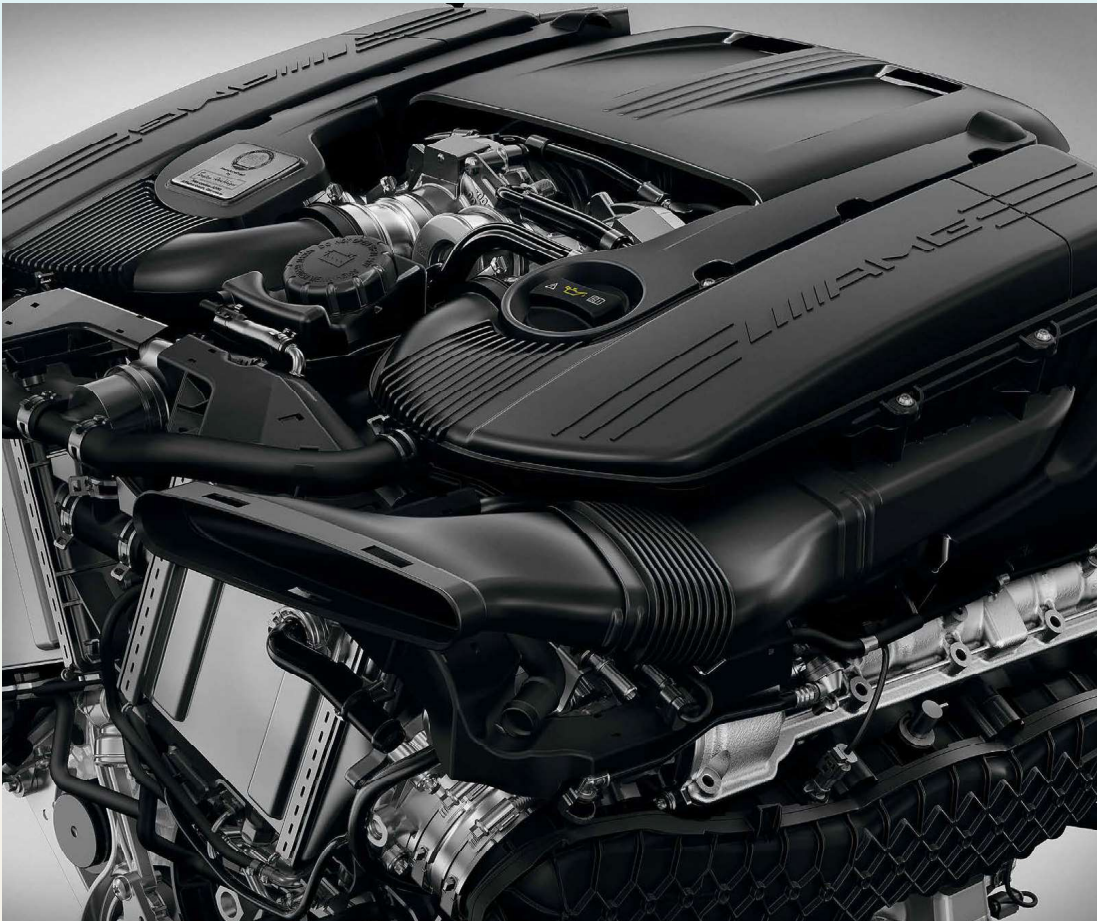
AMG C43 Sedan, Coupe, Cabriolet
AMG-enhanced 385-hp V6 biturbo
AMG Performance 4MATIC

AMG C63 Sedan, Coupe, Cabriolet
Handcrafted 469-hp V8 biturbo
Rear-wheel drive

AMG C63 S Sedan, Coupe, Cabriolet
Handcrafted 503-hp V8 biturbo
Rear-wheel drive

LEADERSHIP





PERFORMANCE

NINE SPEEDS, NO FEWER THAN FIVE DRIVING MODES, AND A TURBO OR TWO: JUST A FEW OF THE REASONS A C-CLASS FEELS JUST RIGHT IN ANY NUMBER OF SITUATIONS.

TURBO OR BITURBO POWER turns less fuel into more force, and greater fun. Rapid-multispark ignition and Direct Injection self-tune in milliseconds to optimize performance.

DYNAMIC SELECT lets you vary the car's character to suit your mood. A single control adapts shifting, steering, throttle and more from easygoing Comfort to eager Sport+.

HIGHLIGHTS*

Inline-4 turbo, AMG-enhanced V6 biturbo, or handcrafted AMG V8 biturbo engine

Paddle-shifted 9-speed, or AMG SPEEDSHIFT® TCT or MCT 9-speed

Rear-wheel drive, 4MATIC® all-wheel drive, or AMG Performance 4MATIC

Selective-damping suspension, or AMG RIDE CONTROL Sport Suspension with 3-stage damping

DYNAMIC SELECT drive modes

ECO Start/Stop system

*Optional or not available on some models.
†Please see back of brochure.

TANGIBLE details ensure the surfaces you touch fulfill the promises made to your eyes. Wood trim is hand-finished per tradition, but offered in modern new varieties. Satin silver switches and accents are genuine aluminum.

SENSORY rewards occur on multiple levels, from twice-filtered dual-zone climate control to available 64-color ambient lighting, heated and ventilated front seats, and voice control that lets you adjust these features hands-free.

HIGHLIGHTS

Power front seats, with memory and power thigh support for driver

Heated and ventilated front seats*

AIRSCARF® neck-level heating (cabriolets)

64-color LED ambient lighting with illuminated door sills*

Burmester® Surround Sound with drilled metal speaker grilles

Dual-zone climate control with dust/pollen and activated charcoal filters

Power sunroof (sedans), Panorama roof (sedans,* coupes), or 3-layer fabric power soft top (cabriolets)

*Optional or not available on some models. Please see back of brochure.

SPORTY YET ELEGANT, A C-CLASS ALSO UNITES INTRIGUING DESIGN WITH INTUITIVE LOGIC. SOON, EVEN THE MOST INDULGENT LUXURIES WILL BE MUST-HAVES.





SAFETY



A NEW GENERATION OF DRIVER ASSISTANCE AND SAFETY SYSTEMS CAN KEEP VIRTUAL EYES ON THE ROAD, AND LEND A VIRTUAL HAND TO HELP KEEP YOU ON COURSE.

Standard **RADAR AND CAMERA** systems watch the road ahead, and help you back up more safely. Radar-based Active Brake Assist can alert you if you're closing in too quickly on a vehicle ahead, and even initiate braking if you don't react to the alert.⁴

Available **DRIVER ASSISTS**⁵ help ease your way in cities, stop-and-go traffic, and highway cruising—even slowing for tolls or exits. Other systems can help prepare for a front, side or rear impact before it happens, and help you steer around danger.

HIGHLIGHTS

Radar-based Active Brake Assist

Rearview camera or multicamera Surround View System^{4,6}

Driver assistance suite⁵ including Active Distance Assist DISTRONIC[®] cruise control; Route-based Speed Adaptation; PRE-SAFE[®] PLUS; Evasive Steering Assist; and Active Blind Spot, Emergency Stop, Lane Change, Lane Keeping, Speed Limit and Steering Assists

Pop-up roll bars (Cabriolets)⁷

TECHNOLOGY

WHETHER KEEPING YOU CONNECTED OR HELPING YOU GET AWAY FROM IT ALL, CONTROL IS AT YOUR FINGERTIPS, OR AS CLOSE AS YOUR VOICE.

An intuitive click-turn controller on the console and a 7" or 10.25" **CENTRAL SCREEN** animate audio and vehicle settings. Smartphone-like Touch Control Buttons on the steering wheel and a 12.3" digital instrument cluster⁸ make it even more seamless.

Burmester[®] **SURROUND SOUND**⁹ amplifies your enjoyment of HD Radio[®] stations, Bluetooth[®] audio streaming, SiriusXM Radio[™] and more. Navigation⁹ options include a new SD card-based system, or COMAND[®] with voice control of many cabin features.

HIGHLIGHTS

Central controller with 7" or 10.25"¹⁰ display, or COMAND with touchpad and enhanced voice control¹¹

Apple CarPlay[™] and Android Auto[™]

12.3" digital instrument cluster,⁸ Head-Up Display¹²

Wireless charging and NFC pairing¹¹

Burmester[®] surround sound⁹

LED headlamps and taillamps, or LED Intelligent Light System with Adaptive Highbeam Assist¹³



⁴Optional or not available on some models. Please see features and endnotes at back of brochure.



EXTERIOR LIGHTING PACKAGE

LED Intelligent Light System headlamps with Active Curve Illumination
Adaptive Highbeam Assist

MULTIMEDIA PACKAGE

COMAND[®] navigation[®] with 3 years of Live Traffic service
10.25" display (standard on coupes, cabriolets, AMG sedans), touchpad controller (standard on cabriolets)
Car-to-X Communication[®]?
Enhanced voice control

STYLING PACKAGES

AMG Line with AMG body styling, 18" (or optional 19") AMG[®] wheels,¹ chrome diamond-block grille, AMG Line interior, and more
Night Packages with gloss black accents for exterior and AMG wheels
AMG Exterior Carbon Fiber and AMG Performance Studio Packages

**POPULAR OPTION GROUPS
MAKE IT EASY TO CUSTOM-TAILOR YOUR C-CLASS TO FIT YOUR LIFE AND YOUR STYLE.**

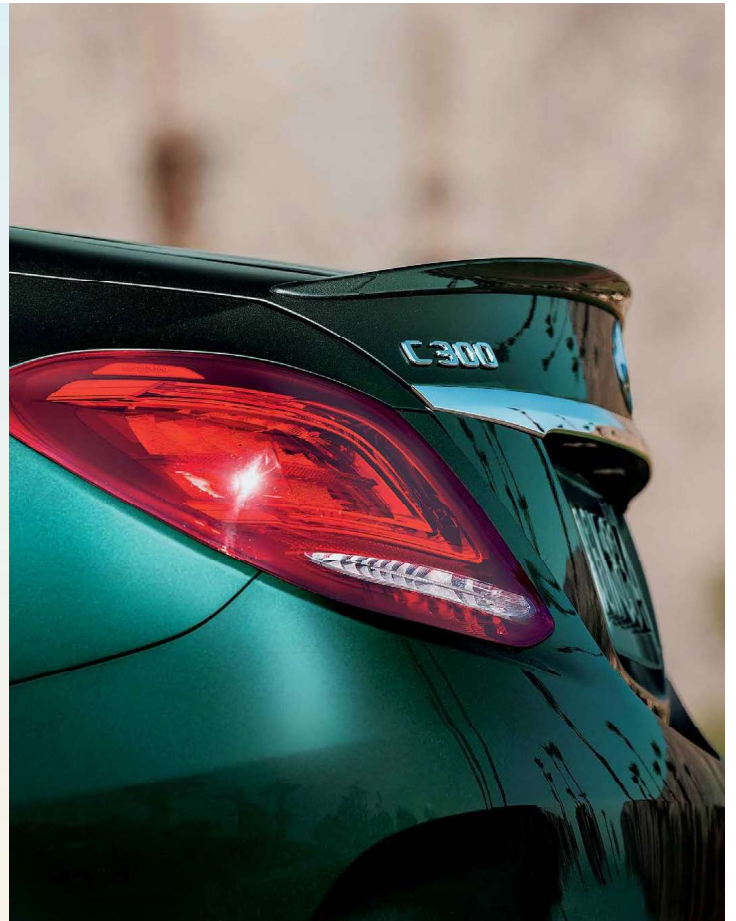
Stylishly appointed and generously equipped, every C-Class also offers a wide array of options to meet your needs and satisfy your wishes. The most popular options are grouped into easy-order packages—some of them shown here—that let you enjoy a number of the most-desired items just by checking off a few boxes.

Package contents and availability vary by model. See page 51 for full list of options and packages.

PACKAGES

THE C 300 SEDANS

FEW THINGS IN LIFE
COMBINE TIMELESS
AND FUTURISTIC THE
WAY A C-CLASS CAN.
BEING EXCITED ABOUT
TOMORROW IS A
FEELING THAT SHOULD
NEVER GET OLD.







THE C 300 SEDANS

Cast your gaze over a C300 or all-wheel-drive C300 4MATIC Sedan and you might forget how inherently sensible it is. Its lines are muscular yet flowing—evidence that an athlete's moves can be as elegant as a dancer's. Its proportions are an ideal balance of sportiness and luxury—nimble in the city, yet spacious in its cabin. Every element of its style reflects the character within: Reshaped lower bodywork and eight wheel designs—with AMG options for both—make a more powerful statement. So does a new 255-hp turbo engine. New multi-element LED headlamps are more eye-catching by day, more revealing by night. Its cabin—already praised for setting new standards in style and appointments—applies the deep tradition of Mercedes-Benz craftsmanship with fresh finesse. New wood choices include Grey Oak and Walnut, in modern satin finishes celebrating their natural grain. New reconfigurable digital instruments and 64-color LED ambient lighting are options that keep giving you options. With efficient power, advanced innovation and refined comfort, a C300 Sedan is a pragmatic choice you can get passionate about.

The **AMG LINE** brings out the sporting soul of the C300, with AMG styling, 18" AMG® wheels,¹ a chrome diamond-block grille, sport brakes, and exclusive cockpit details. The Night Package adds bold gloss black accents to the wheels and body.

The **PREMIUM PACKAGE** helps smooth your journey from start to finish: Blind Spot Assist¹³ includes new Rear Cross-Traffic Alert.¹⁴ KEYLESS-GO® includes a power trunklid with HANDS-FREE ACCESS. And SiriusXM Radio includes a 6-month trial of their in-car and online All Access Plan.⁷

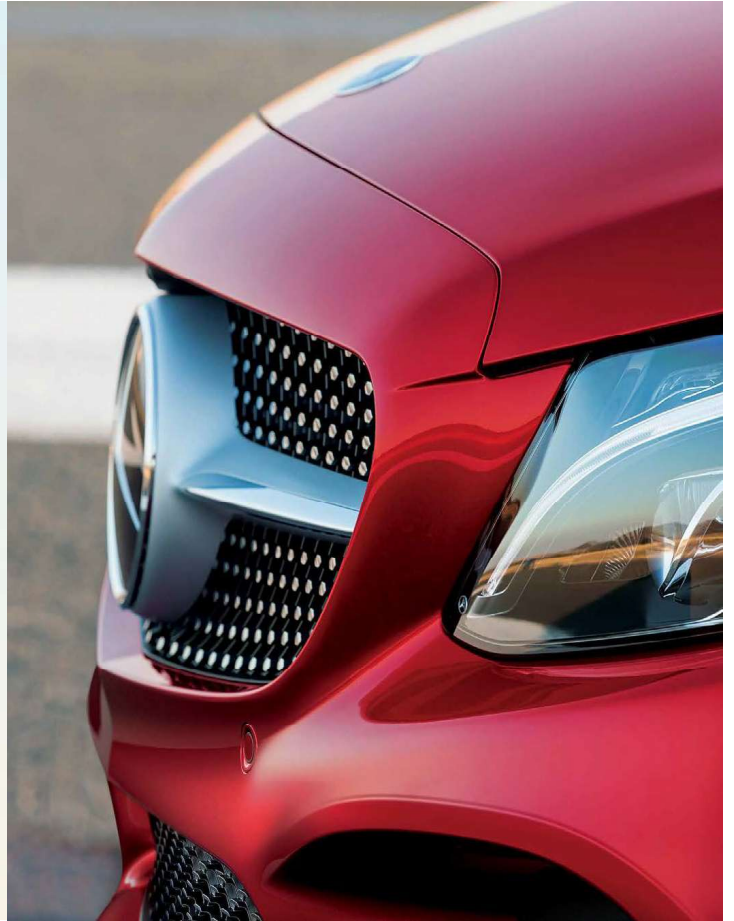
Stay **CONNECTED** to your world and your devices with Bluetooth® audio streaming, Apple CarPlay™ and Android Auto—all standard. Options include wireless phone charging,¹¹ and COMAND® navigation⁸ with voice control of numerous cabin features.

**AS TRADITIONAL SEDANS
GO, THE C-CLASS GOES
WHERE MERCEDES-BENZ
TRADITIONS ALWAYS
TAKE YOU: INTO A NEW
ERA OF INNOVATION AND
DRIVING INSPIRATION.**

Please see endnotes at back of brochure.

THE C 300 COUPES

ITS NEW ENGINE
IS MORE POWERFUL.
ITS NEW TECHNOLOGY
IS MORE CAPABLE.
AND WITH FRESH
DETAILS INSIDE
AND OUT, IT'S EVEN
MORE IRRESISTIBLE.







THE C 300 COUPES

The C300 Coupes have a way of turning conflict into beautiful harmony. Crisp styling and sharply focused handling manage to blur the line between sporty performance and refined luxury—without compromising either. A new 255-hp turbo engine is more powerful, yet both the rear-wheel-drive and 4MATIC® all-wheel drive coupes return up to 31 mpg highway.¹⁵ They also usher in a new generation of safety and driver assistance, while advancing the technology that's just plain fun to have, even if it also happens to be highly useful: A new 10.25" center screen also offers standard Apple CarPlay™ and Android Auto.® A 12.3" digital instrument cluster option lets you choose from three gauge styles. New smartphone-style Touch Control Buttons on the steering wheel put control of the in-dash screens under your thumbs. Shift paddles put nine speeds at your fingertips. And four sport seats and a power Panorama roof let you share it with friends—though, just a heads-up: They're all going to want to drive your coupe. How you turn that conflict into harmony is up to you.

STYLING OPTIONS let you create a C 300 Coupe all your own: Choose from nine 18" or 19" wheel¹ styles, including five AMG® designs paired with the aggressively athletic bodywork of the AMG Line or the gloss black accents of the Night Package.

FOUR SPORT SEATS are offered in a spectrum of upholsteries, including supple *designo* Nappa leather in bold Bengal Red. The power driver seat's standard memory system also includes the steering column and side mirrors. Four hand-finished wood trim choices are offered, all at no charge.

TECHNOLOGY advancements include new LED headlamps. The Intelligent Light System option adapts to curves and other vehicles ahead. Available Blind Spot Assist can now alert you if it senses a vehicle or cycle coming before you open the door.¹³

**NINE SPEEDS, 18" WHEELS,
HAND-FINISHED WOOD,
AND A POWER PANORAMA
ROOF ARE ALL STANDARD.
AND A FEW REASONS THE
C-CLASS COUPE STANDS A
CUT ABOVE ITS CLASS.**

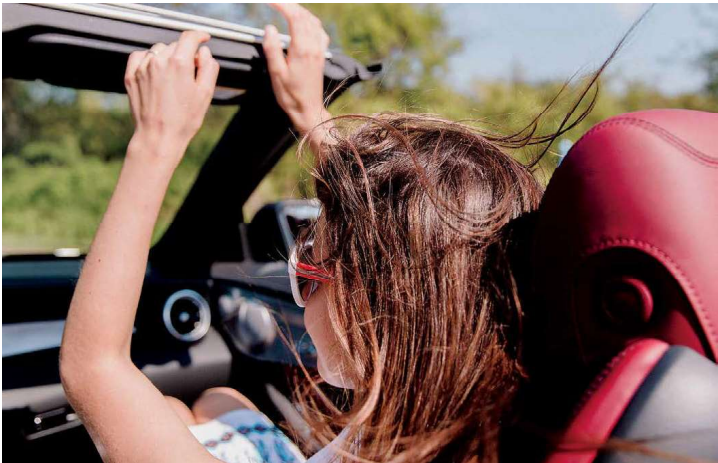
Please see endnotes at back of brochure.

THE C 300 CABRIOLETS

THERE'S PLENTY NEW
UNDER THE SUN IN A
C-CLASS CABRIOLET.
WHAT MAKES IT A
MERCEDES-BENZ ARE
ALL THE WAYS IT
SHINES WHEN THE
SUN CHOOSES NOT TO.







THE C 300 CABRIOLETS

With standard heated front seats, a fabric soft top tailored from three insulating layers, and available 4MATIC® all-wheel drive, the C300 Cabriolet is a convertible that never seems to go out of season. Its new 255-hp turbo engine and paddle-shifted 9-speed are great ways to celebrate a springtime day. And within 20 seconds of summer's arrival, one button dispatches the power top under the sleek rear deck. With its four seats set alfresco, a ring of brushed metal encircles the cabin, setting off whichever of its rich upholstery and four wood trim options you've selected. Dash displays stay vivid in the sunshine, and the climate control can automatically adapt to driving top-down. And with its clever AIRSCARF® system enveloping your neck and shoulders in warm air, you can keep the top stowed as summer days turn to autumn evenings. Of course, it's foremost a C-Class, which keeps you at the forefront of innovation, including all the safety, driver-assistance and luxury advancements of its fixed-roof siblings. And with the AMG Line, Night Package, and nine wheel options, it's not just always in season. A C300 is always in style.

AIRSCARF extends the top-down driving season by emitting warm air from beneath the front head restraints. **AIRCAP®** is an available system of wind deflectors that rise above the windshield and rear deck to help calm turbulence in the open cabin.

Available new **DRIVER ASSISTS** help to make driving breezier, too. Conveniences let you change lanes with a tap of the turn signal lever,¹⁶ or can automatically adjust the **DISTRONIC®** adaptive cruise control¹⁷ when posted speed limits change, or when you take an offramp, based on GPS map data.¹⁸

Thoughtful **ENGINEERING** adds up to a more versatile convertible. Rear seats fold down in a 50/50 split.¹⁹ Seat-belt presenters "hand" the belts to the front-seat occupants for easy fastening, and retract them when unfastened to facilitate rear-cabin entry.

INTO THE SUNSET, UNDER
THE STARS, OR IN THE
COMFORT OF ITS 3-LAYER
TOP, A C-CLASS CABRIOLET
LETS YOU DRIVE A RICH
MOTORING HERITAGE
INTO A FRESH NEW DAY.

Please see endnotes at back of brochure.

A NINE-COURSE
FEAST FOR THE
POWER-HUNGRY



AMG
DRIVING PERFORMANCE

DOMINANT

NINE MERCEDES-AMG C-CLASS MODELS — SEDANS, COUPES AND CABRIOLETS — CARRY THE DNA OF COUNTLESS RACING CHAMPIONS. IT'S A BLOODLINE WITH NO RECESSIVE GENES.

AMG INSTRUMENTATION options include a 12.3" reconfigurable digital cluster and an AMG Head-Up Display.* A new AMG DRIVE UNIT — standard on the C 63 S and a C 63 option — includes steering wheel-mounted performance controls with color readouts.

AMG RIDE CONTROL is an adaptive-damping sport suspension that's fortified by more rigid components and set on a wider wheel stance. The driving modes of AMG DYNAMIC SELECT control its 3-stage damping, plus throttle mapping, shifting response, and more.

HIGHLIGHTS

C 43 Sedan, Coupe, Cabriolet:
AMG-enhanced 3.0L biturbo V6,
385 hp, 384 lb-ft torque;
AMG SPEEDSHIFT™ TCT 9-speed;
AMG Performance 4MATIC™;
18" or optional 19" AMG wheels†

C 63 and C 63 S
Sedan, Coupe, Cabriolet:
Handcrafted AMG 4.0L biturbo V8,
C 63: 469 hp, 479 lb-ft torque,
C 63 S: 503 hp, 516 lb-ft torque;
AMG SPEEDSHIFT MCT 9-speed;
rear-wheel drive with electronic
limited-slip differential;
AMG Performance Exhaust System;
18" up to optional 20" AMG wheels†

AMG
DRIVING PERFORMANCE

*Please see endnotes at back of brochure.



**A TRACK RECORD
FILLED WITH
TRACK RECORDS**

AMG
DRIVING PERFORMANCE

NO COMPETITOR HAS CHALKED UP MORE RACING VICTORIES THAN THE AMG C-CLASS. BEST OF ALL, YOU GET TO PUT THE TROPHY IN YOUR GARAGE.

AN INFUSION OF AMG DNA enhances every facet of performance in the C43 models. Along with reduced friction and higher boost, their 3.0L biturbo V6 now puts out 385 hp. Their AMG SPEEDSHIFT™ TCT 9-speed and AMG Performance 4MATIC® turn traction™ into action.

ONE PAIR OF HANDS crafts each biturbo V8 in the 469-hp C63 models, and the 503-hp C63 S models. An AMG SPEEDSHIFT MCT 9-speed, rear-wheel drive, and electronic limited-slip differential team up for agile response. Dynamic engine mounts and 9-mode AMG TRACTION CONTROL further empower C63 S models.

Please see endnotes at back of brochure.



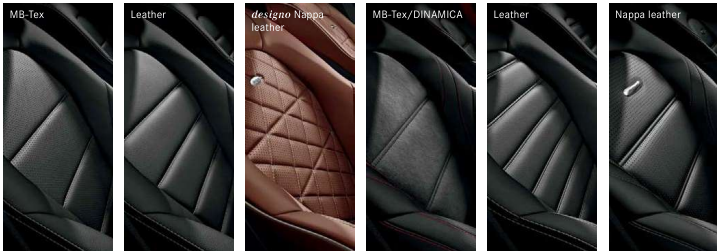
AMG
DRIVING PERFORMANCE



AMG
DRIVING PERFORMANCE

UPHOLSTERY

Appearance may vary by model and bodystyle.



- C300
- C300
- C300 AMG Sedans
- AMG C43
- AMG C63
- AMG C43
- AMG C63 S
- AMG C63

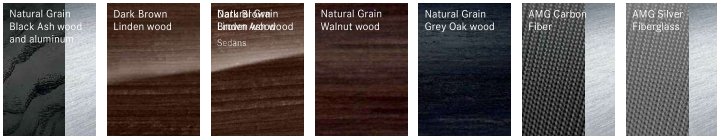
UPHOLSTERY COLOR

Availability varies by model and may require other options. Please visit MBUSA.com or see your dealer for details.



TRIM

Availability varies by model and may require other options. Please visit MBUSA.com or see your dealer for details.

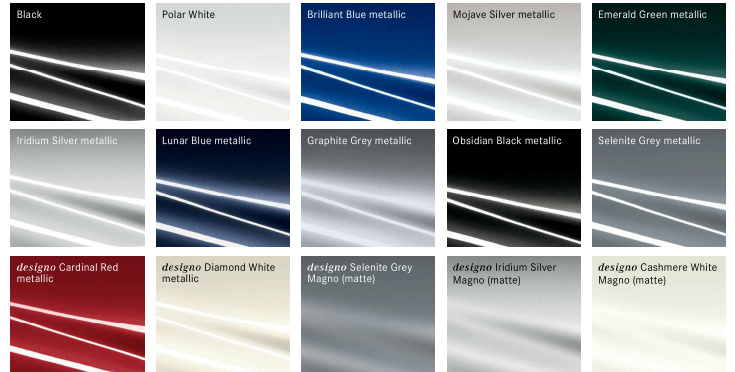


CABRIOLET SOFT TOPS

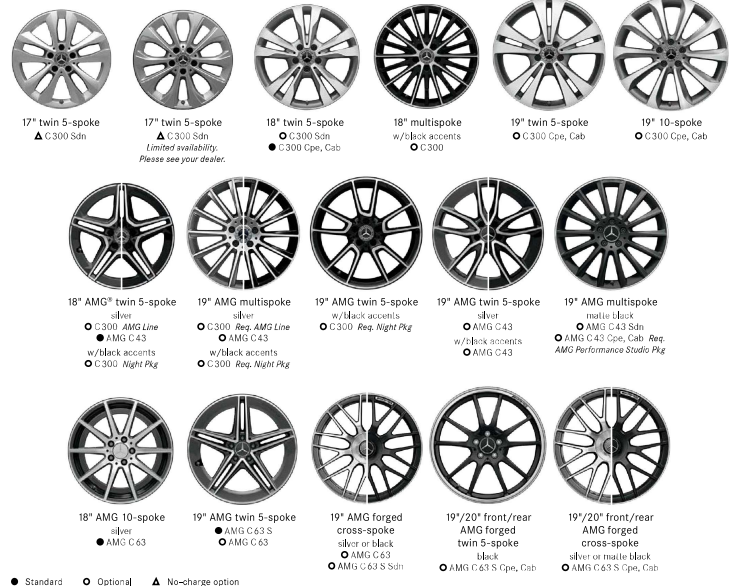


PAINTWORK

Availability varies by model. Please visit MBUSA.com or see your dealer for details.



WHEELS





OWNERSHIP

THE VALUE OF THE DIFFERENCE

Getting a new Mercedes-Benz may be a dream come true. But from the vehicle and its features to the company and its people, Mercedes-Benz aims to make every experience special—now, and for many miles down the road.

MERCEDES ME CONNECT

More than a smartphone app with remote vehicle features, Mercedes me connect helps make your life easier, from the everyday to an emergency, and countless ways in between.¹ To learn more, visit MBUSA.com/mercedesme



Mercedes me

GENUINE ACCESSORIES

Genuine Mercedes-Benz Accessories let you personalize your vehicle beyond its factory equipment. A range of items let you enhance its convenience, versatility, or appearance—all without compromising its legendary quality, safety or style.

From the Illuminated Star to a rear spoiler, they're stylish. Whether helping you manage cargo, enjoy your electronic devices, or protect your car's finishes, they're functional. And they all fit like they're engineered for your car. Because they are. To see the line of accessories for your vehicle, visit MBUSA.com/accessories



ENDNOTES

1. Item is optional or not available on some models. See Packages and Features listing in this brochure or visit MBUSA.com for more information.
2. Lower-velocity frontal and accompanying wheels provide substantially reduced protection, increased risk of loss and reduced ride comfort. Debris, wind and the damage may occur if the vehicle is struck by a rough or damaged road surface, potholes, debris or obstacles. These items are not designed for use on low-traction roads. When they are required on appropriate roads and approved vehicles, use is recommended for drivers in these conditions.
3. The toll-free system is designed to enhance the level of customer protection compared to a website or a call center. No system, regardless of how advanced, can eliminate the possibility of injury in an accident. Please always wear your seat belt.
4. All Mercedes-Benz services are available only when cellular and GPS signals are available, which are provided by third parties and not within the control of Mercedes-Benz USA, LLC. Mercedes me connect assist services, and 24 hours of Mercedes-Benz roadside assistance, are provided to additional ranges with new-vehicle service contracts as a Mercedes-Benz dealer-installed, Mercedes-Benz "SMART" navigation. Also, for 2 years of ownership, we'll provide 2 years of Real-time information provided by satellite, 1 year of Concierge Service, and a second trial of 100 miles of roadside assistance. Some services are only available on select vehicles. Your use may require use of certain services. Connection may be limited by cellular usage and other factors. Features may be discontinued or updated at any time, and may also require third-party software updates. Some services may be limited or restricted in some areas. Driver is responsible for compliance with local and state laws. The Mercedes me Connect App is associated with Apple, Google, Microsoft and Amazon.com-based phones, and may require a software update. See your dealer or MBUSA.com/mercedesmeconnect for details.
5. Active Lane Assist may not be sufficient to avoid an accident. It does not need to be certain stationary or moving objects, or pedestrians, may not track in certain situations where objects cannot be clearly identified, nor does it recognize or predict the behavior and trajectory of the car in every movement of vehicles and pedestrians ahead. It is the driver's responsibility at all times to be attentive to traffic and road conditions and to avoid the occurrence of an accident or other unsafe acts necessary to retain control of the vehicle. Drivers are cautioned not to wait for the system's alerts before reacting, as that may not afford sufficient time and distance to brake safely. See Operator's Manual for system's operating speeds and additional information and warnings.
6. Even the most advanced safety systems may not be sufficient to avoid an accident. Please refer to

- more details for information on specific systems elsewhere in this brochure, at MBUSA.com, and in the vehicle's Operator's Manual. Some systems may be optional.
7. Rearview camera and Surround View System do not substitute for a driver's ability to safely drive or to avoid collisions and are not a substitute for active or warning around the vehicle for any obstacles or objects. Images displayed may be limited by camera field of view, weather, lighting conditions and the presence of dirt, fog or snow on the cameras.
8. The increased use of new, available road-side and vehicle-related data is 4-month subscription per year plus the 5-year All-Access package. If you decide to continue your subscription after your trial, the plan you choose will automatically renew and you will be charged according to your plan agreement method at the current rates. Fees are taxes apply. To cancel your trial call 800-4MYCAR or visit MBUSA.com/4MYCAR. See www.ford.com/4MYCAR for complete terms of subscription, trial and program management. Subject to change.
9. While the navigation system provides a directional assistance, the driver must remain focused on safe driving practices, and not paying attention to traffic and road signs. The driver also must use the system's audio cues and warnings and should only use the map or visual displays once the vehicle has been stopped in a safe place. Maps do not cover all areas or cities, but within an area, SD services navigation is a dealer-installed accessory, and not the factory installation option.
10. Apple CarPlay is a product of Apple Inc. Android Auto is a product of Google Inc. Device and application features are subject to change by their providers. Connection to apps and streaming services may be limited by device or network connection. Data usage may vary, and through device and subject to fees, charges or restrictions in user's wireless plan. Vehicle's factory audio/infotainment interface may not be used simultaneously with Apple CarPlay or Android Auto. When using Apple CarPlay or Android Auto, you are, the responsibility for controlling the device access. Siri or Google Assistant may not be used simultaneously with either of these services.
11. Wireless charging and NFC pairing available only for devices with compatible technology and size. See Operator's Manual for more information. Devices not included.
12. Concierge services are available as part of Mercedes me connect. Concierge services operate only when cellular and GPS signals are available, which are provided by third parties and not within the control of Mercedes-Benz USA, LLC. See your dealer or MBUSA.com/mercedesmeconnect for details.
13. The Spot Assist is a warning in a system. The Spot Assist or Active Blind Spot Assist may not be sufficient to avoid an accident or to avoid collisions in your lane and does not estimate the speed of approaching vehicles. It must not be used as a substitute for driver awareness and checking of surrounding traffic conditions. See Operator's Manual for system's operating speeds and additional information and warnings.
14. Best "time-to-leave" alert is a substitute for actively checking around the vehicle for any obstacles or objects. It may not detect certain objects based on their size, location, or speed and an object's approach, or due to sensor obstruction, and does not control steering. See Operator's Manual for additional information and warnings.
15. 2019 EPA-estimated fuel economy. Compare the estimated mpg for other vehicles. You may get different mileage depending on how you drive, weather conditions and traffic. Active Lane Assist is not a substitute for active or warning around the vehicle. It estimates but does not predict the curvature and lateral layout of the road ahead or the movement of vehicles in a lane. It is the driver's responsibility at all times to be attentive to traffic and road conditions, and to provide the driving inputs necessary for control of the vehicle. System may not detect some objects, obstacles or vehicles in the area in which the vehicle is moving. See Operator's Manual for system operating speeds and additional information and warnings.
16. Active Lane Assist (DRIVE-PILOT) is not a substitute for active driving involvement. It does not detect trailing, closed-in or slow-moving vehicles, nor does it predict the curvature and lateral layout of the road ahead or the movement of vehicles ahead. Active Lane Assist requires driver to be steering wheel and be ready to steer when it is active. It may not recognize lane markings in some lighting, weather, and road conditions. It is the driver's responsibility at all times to be attentive to traffic and road conditions, and to provide the steering, braking and other driving inputs necessary to retain control of the vehicle. Drivers are cautioned not to wait for the system's alerts before braking, as that may not afford sufficient time and distance to brake safely.
17. Driver is responsible for the planning and/or stopping vehicle at intersections, and for giving right-of-way to other vehicles. System is not a substitute for driver awareness of road speed limit and/or road conditions. Driver is responsible for safely operating vehicle in accordance with local traffic laws and driving conditions.
18. Unoccupied vehicle detection: "hands-on" rule. Drivers are required to be fully seated and to have their seatbelts buckled.
19. No system, regardless of how advanced, can overcome the laws of physics or correct careless driving. Please always wear your seat belt. Driver's self-steering steering inputs are required to initiate the system's use, and can operate to intervene at any time. See Operator's Manual for system operating speeds and additional information and warnings.
20. State rules of accident or an emergency call operator (operator's) track vehicles may vary depending on model, environmental or market-based conditions, or weather, location and vehicle load.
21. Driving with the driver or a distracted/dangerous and must be avoided. ATTENTION ASSIST and Lane

LIFE IS A ROAD TRIP. IT SHOULD BE FUN.

THE PERKS BEHIND THE STAR

The Star on the front of your Mercedes-Benz is also a symbol of the treatment you can expect when you're part of the family. It starts at your Mercedes-Benz dealer, where your sales and service teams are equipped to take the best care of your vehicle, and eager to take the best care of you. But you're part of a much bigger world of Mercedes-Benz, too—from special events, offers and partnerships, to exclusive perks for AMG owners like an online "lounge" and the AMG Driving Academy.



EASE OF SERVICE

Your Mercedes-Benz dealer makes it easy to keep your vehicle at its peak of performance. Thanks to Mercedes me assist,² so does your car. It can alert your dealer when maintenance is due, send diagnostic info, and even have its software updated over the air.

ROADSIDE ASSISTANCE

The original manufacturer-provided Roadside Assistance Program is just a phone call or in-car button's push away, 24/7, to anyone driving your Mercedes-Benz. From a jump start to a tow to expert attention even before they arrive, the original still puts you first.³



1. Keeping Assist are warning systems only. ATTENTION ASSIST, Lane Keeping Assist and Active Lane Keeping Assist may be insufficient to alert a driver or an inattentive driver. Lane drift and cannot be relied on to avoid an accident or serious injury. See Operator's Manual for system's operating speeds and additional information and warnings.
2. No system, regardless of how advanced, can overcome the laws of physics or correct careless driving. Please always wear your seat belt. Driver's self-steering steering inputs are required to initiate the system's use, and can operate to intervene at any time. See Operator's Manual for system operating speeds and additional information and warnings.
3. Drivers are cautioned not to wait for the system's alerts before braking, as that may not afford sufficient time and distance to brake safely. Braking effectiveness also depends on proper brake maintenance, and tire and road conditions. See Operator's Manual for system operating speeds and additional information and warnings.
4. System cannot prevent a collision, and does not alert the driver of an impending collision or system activation. It does not intervene with the driver's steering, and does not stop the cross-lane if a collision is occurring or if Active Parking Assist is operating. When PRESAFE is active, the side windows, a small gap, will not rise fully. Please read the manual.
5. Steering wheel options and AMG Performance seats are not available with some upholstery. Steering wheel options may not be ordered together. AMG TRACKING Performance steering wheels require AMG TRACKING. Please see MBUSA.com for your dealer.
6. The carbon-ceramic brakes are designed expressly for high-performance driving. It is a characteristic of these materials and design that brake fade is a possibility. Driving with driving (brake) pedal and lower brake temperature, as compared to higher operating temperatures.
7. These items are designed for competition use. Always use proper, and track laws, and track laws.
8. Please see dealer or MBUSA.com/mercedesmeconnect for details.
9. See your dealer or MBUSA.com/mercedesmeconnect for details on the standard design, minor packages and additional terms based on whether you may require additional options and/or terms, and may include terms in other packages if ordered together. Please see MBUSA.com for your dealer.
10. Roadside Assistance repairs may include charges for parts, service and travel. Vehicle must be accessible from main roads. Depending on the circumstances, these services may be provided by an outside provider, or by Mercedes-Benz Roadside Assistance. Restricted roadway, acts of nature and vehicle accessibility may limit our ability to provide services to you. For full details, please refer to your state and/or limitations of exclusions of Sign and Drive services, as well as the Roadside Assistance Program. Please see your dealer.