



ODYSSEY



2017





THE 2017 ODYSSEY:

BUILT WITH YOUR LOVED ONES IN MIND

The Odyssey delivers practical technology and conveniences that keep your family connected and comfortable. Top it all off with sleek, modern styling, and you've got a minivan that really hits it home.





INTERIOR DESIGN:

FUN FOR ALL

Intuitive technology. Cutting-edge conveniences. With a luxurious interior and so many trailblazing tools at your disposal, the Odyssey is more than just a minivan. It's your mobile command center.



BLUETOOTH®¹ HANDSFREELINK®
With *Bluetooth* HandsFreeLink you can place and receive calls without ever taking your hands off the wheel.*

PUSH BUTTON START
Start your Odyssey with the push of a button (EX and above).

HondaLINK®²
Stay connected with cloud-based access to news and social media (EX and above).

*Drive responsibly. Some state laws prohibit the operation of handheld electronic devices while operating a vehicle. For safety reasons, always launch your audio application or perform any other operation on your phone or audio device only when the vehicle is safely parked.

Odyssey Touring Elite shown with Beige Leather.



INTERIOR FEATURES:

HondaVAC®
With a long reach and removable waste bin, this built-in vacuum makes it easy to clean the entire interior (SE, Touring Elite).

POWER SLIDING DOORS
Dual power sliding doors maximize utility without compromising on style (EX and above).

TRI-ZONE AUTOMATIC CLIMATE CONTROL SYSTEM
The perfect way for everyone to choose their own temperature (EX and above).

COOL BOX
Keeps drinks and snacks chilled while you drive (EX-L and above).

STEERING WHEEL-MOUNTED CONTROLS
Change the music or answer a phone call with your hands on the wheel.*

SMART ENTRY
Unlock and lock your Odyssey without fishing for your keys (EX and above).

ULTRAWIDE REAR ENTERTAINMENT SYSTEM
Enjoy split-screen viewing with an ultrawide 16.2-inch screen and wireless headphones (Touring Elite).

2ND-ROW WALK-IN FEATURE
For easier access to the third row, just pull the lever and the 2nd-row seat moves forward to create extra space.

*Drive responsibly. Some state laws prohibit the operation of handheld electronic devices while operating a vehicle. For safety reasons, always launch your audio application or perform any other operation on your phone or audio device only when the vehicle is safely parked.

HondaVAC

SMART ENTRY

ULTRAWIDE REAR ENTERTAINMENT SYSTEM

POWER SLIDING DOORS

TRI-ZONE AUTOMATIC CLIMATE CONTROL SYSTEM

COOL BOX

STEERING WHEEL-MOUNTED CONTROLS

2ND-ROW WALK-IN FEATURE



PERFORMANCE:

FOLLOW THE LEADER

The Odyssey didn't get to where it is today by standing still. Our signature family vehicle continues to deliver innovative technology, tasteful styling and impressive performance.

Odyssey Touring Elite shown in Crystal Black Pearl.



3.5-LITER V-6 ENGINE

There's no reason a minivan shouldn't be exciting to drive. That's why the Odyssey puts 248 horses³ at your disposal with a powerful 3.5-liter V-6 engine.

27-MPG HIGHWAY RATING*

The Odyssey is an efficient performer thanks in part to Variable Cylinder Management™ (VCM*), which gives you power when you need it and less fuel consumption when you don't.

*19 city/27 highway/22 combined mpg rating. Based on 2017 EPA mileage ratings. Use for comparison purposes only. Your mileage will vary depending on how you drive and maintain your vehicle, driving conditions and other factors.

Odyssey Touring Elite shown in White Diamond Pearl.

DRIVER-ASSISTIVE:

TECHNOLOGY THAT WORKS FOR YOU

Even the most attentive of drivers can get distracted. That's why we've equipped the Odyssey with driver-assistive technology designed to help protect you and your most precious cargo.



Honda LANEWATCH



BLIND SPOT INFORMATION SYSTEM (BSI)

Honda LANEWATCH™⁴

Signal right and a small camera displays live video from your passenger-side mirror, helping make it easier to change lanes (EX, EX-L, Touring).

BLIND SPOT INFORMATION SYSTEM (BSI)⁵

BSI uses radar sensors to detect the presence of vehicles to the side of and behind the Odyssey, to assist you during lane changes. Warning indicators alert you if the system detects a vehicle in your blind spot.



5-Star Overall Vehicle Score*

FORWARD COLLISION WARNING (FCW)⁶

The FCW system can sense the presence of vehicles in front of you, and if it calculates that you're at risk of colliding with a detected vehicle, it activates audible and visual alerts (EX-L and above).

LANE DEPARTURE WARNING (LDW)⁷

A small camera searches for lane markings on the road. If it detects the driver making an unindicated lane departure, visual and audible alerts will signify the departure (EX-L and above).

MULTI-ANGLE REARVIEW CAMERA⁸

Every Odyssey is equipped with a rearview camera. Navigation-equipped models include three different angles.

TIRE PRESSURE MONITORING SYSTEM (TPMS)⁹

Because lost tire pressure can dramatically affect a vehicle's performance, TPMS is designed to alert you if air pressure becomes significantly low in any tire.

VEHICLE STABILITY ASSIST™ (VSA®) WITH TRACTION CONTROL

VSA helps you stay on course in the event of an understeer or oversteer condition by braking individual wheels and/or reducing engine power to help restore your intended course!¹

ADVANCED COMPATIBILITY ENGINEERING™ (ACE)TM BODY STRUCTURE

The ACE body structure is a Honda-exclusive body design that enhances occupant protection and crash compatibility in frontal collisions.

*Government 5-Star Safety Ratings are part of the National Highway Traffic Safety Administration's (NHTSA's) New Car Assessment Program (www.safercar.gov). ¹VSA is not a substitute for safe driving. It cannot correct the vehicle's course in every situation or compensate for reckless driving. Control of the vehicle always remains with the driver.

SAFETY:

YOUR SAFETY IS OUR PRIORITY

Every Odyssey is equipped with advanced safety features designed to help protect you and your passengers, mile after mile.



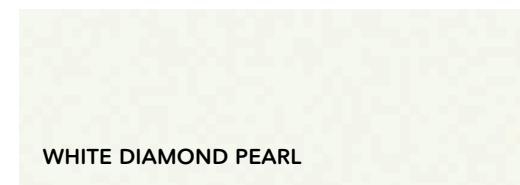
MULTI-ANGLE REARVIEW CAMERA



ACE BODY STRUCTURE

Odyssey Touring shown in Deep Scarlet Pearl.

EXTERIOR



WHITE DIAMOND PEARL



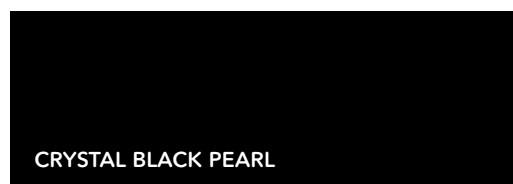
SMOKY TOPAZ METALLIC



DEEP SCARLET PEARL



LUNAR SILVER METALLIC



CRYSTAL BLACK PEARL



OBSIDIAN BLUE PEARL



MODERN STEEL METALLIC

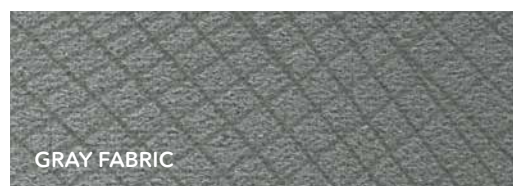
KEY STANDARD FEATURES FOR ALL ODYSSEY MODELS

- 248-hp,³ 3.5 liter i-VTEC® V-6 engine
- One-motion 60/40 split 3rd-row Magic Seat®
- USB Audio Interface¹⁰
- Bluetooth®¹ HandsFreeLink® and streaming audio
- Rearview camera⁸ with guidelines
- SMS text message function¹¹

INTERIOR LX / EX / SE



BEIGE FABRIC



GRAY FABRIC



TRUFFLE FABRIC

INTERIOR EX-L / TOURING / TOURING ELITE



BEIGE LEATHER



GRAY LEATHER



TRUFFLE LEATHER

¹The Bluetooth® word mark and logos are owned by the Bluetooth SIG, Inc., and any use of such marks by Honda Motor Co., Ltd., is under license. ²Compatible smartphone required. All Aha platform feeds are audible, not visual in nature. Vehicle does not provide any feeds. Some state laws prohibit the operation of handheld electronic devices while operating a vehicle. Launch smartphone applications only when the vehicle is safely parked. Aha is a trademark of Harman International Industries, Inc. Your wireless carrier's rates may apply. ³248 hp @ 5700 rpm (SAE net). ⁴Display accuracy will vary based on weather, size of object and speed, and the display may not show all relevant traffic. The display is not a substitute for your own direct visual assessment of traffic conditions before changing lanes. ⁵The system is not a substitute for your own visual assessment before changing lanes. BSI may not detect all objects behind or to the side of a vehicle and may not detect a given object; system accuracy will vary based on weather, size of object, and speed. Driver remains responsible for safely operating vehicle and avoiding collisions. ⁶FCW cannot detect all objects ahead and may not detect a given object; accuracy will vary based on weather, speed and other factors. System operation affected by extreme interior heat. FCW does not include a braking function. Driver remains responsible for safely operating vehicle and avoiding collisions. ⁷LDW only alerts drivers when lane drift is detected without a turn signal in use. LDW may not detect all lane markings or lane departures; accuracy will vary based on weather, speed and road condition. System operation affected by extreme interior heat. Driver remains responsible for safely operating vehicle and avoiding collisions. ⁸Always visually confirm that it is safe to drive before backing up; the rearview camera display does not provide complete information about all conditions and objects at the rear of your vehicle. ⁹For optimal tire wear and performance, tire pressure should be checked regularly with a gauge. Do not rely solely on the monitor system. Please see your Honda dealer for details. ¹⁰The USB Audio Interface is used for direct connection to and control of some current digital audio players and other USB devices that contain MP3, WMA or AAC music files. Some USB devices with security software and digital rights-protected files may not work. Please see your Honda dealer for details. ¹¹Compatible with select phones with Bluetooth®. Your wireless carrier's rate plans apply. State or local laws may limit use of texting feature. Only use texting feature when conditions allow you to do so safely. ¹²Pandora, the Pandora logo, and the Pandora trade dress are trademarks or registered trademarks of Pandora Media, Inc. Used with permission. Compatible with select smartphones. See: www.pandora.com/anywhere/mobile. Not all devices compatible with USB connection. Your wireless carrier's rate plans apply. ¹³SiriusXM services require a subscription after any trial period. If you decide to continue your SiriusXM service at the end of your trial subscription, the plan you choose will automatically renew and bill at then-current rates until you call SiriusXM at 1-866-635-2349 to cancel. See our Customer Agreement for complete terms at www.siriusxm.com. Fees and programming subject to change. XM satellite service is available only to those at least 18 years and older in the 48 contiguous United States and D.C. ©2017 SiriusXM Radio Inc. Sirius, XM and all related marks and logos are trademarks of SiriusXM Radio Inc. ¹⁴The Honda Satellite-Linked Navigation System™ and Rear Entertainment System are only available separately on EX-L models. ¹⁵The Honda Satellite-Linked Navigation System™ is available on EX-L models and standard on Touring models in the United States, Canada and Puerto Rico. (FM Traffic service only available in the United States, except Alaska). Please see your Honda dealer for details. ¹⁶A separate source device is required to use split-screen function. HDMI, the HDMI Logo, and High-Definition Multimedia Interface are trademarks or registered trademarks of HDMI Licensing LLC in the United States and other countries. ¹⁷HD Radio™ is a proprietary trademark of iBiquity Digital Corporation. ¹⁸3-Year/36,000-Mile Limited Warranty, 5-Year/60,000-Mile Limited Powertrain Warranty. Ordinary maintenance or adjustments, parts subject to normal wear and replacement, and certain items are excluded. Please see your Honda dealer for the terms and conditions of the limited warranties. ¹⁹NHL and the NHL Shield are registered trademarks of the National Hockey League. ©NHL 2017. All Rights Reserved. ²⁰The Twitter bird logo and Stylized V logo are trademarks of Twitter, Inc., or its affiliates. **Honda reminds you and your passengers to always use seat belts and appropriate child seats. Children 12 and under are safest when properly restrained in the rear seat.** Specifications, features, illustrations and equipment shown in this brochure are based upon latest available information at the time of printing. Although descriptions are believed to be correct, accuracy cannot be guaranteed. American Honda Motor Co., Inc., reserves the right to make changes at any time, without notice or obligation, in colors, specifications, accessories, materials and models. Some features mentioned herein are not available in all areas. Please see your Honda dealer for details. Some vehicles may be shown with optional equipment. Available = Optional. All images contained herein are either owned by American Honda Motor Co., Inc., or used under a valid license. It is a violation of federal law to reproduce these images without express written permission from American Honda Motor Co., Inc., or the individual copyright owner of such images. Honda Financial Services is a DBA of American Honda Finance Corporation. Honda, the H-mark symbol, Honda Care, Honda LaneWatch, HondaLink, Honda Satellite-Linked Navigation System, HondaVAC, Advanced Compatibility Engineering, ACE, HandsFreeLink, i-VTEC, Magic Seat, Variable Cylinder Management, VCM, Vehicle Stability Assist and VSA are trademarks of Honda Motor Co., Ltd. © 2017 American Honda Motor Co., Inc. Odyssey Touring Elite shown on back cover with accessory roof rails, crossbars, body side molding and splash guards.

SPECIFICATIONS



LX



EX / SE / EX-L



TOURING / TOURING ELITE

LX

- 248-hp,³ 3.5-liter i-VTEC® V-6 engine
- 6-speed automatic transmission
- Vehicle Stability Assist™ (VSA®) with traction control
- i-MID with 8-inch high-resolution screen and customizable feature settings
- Rearview camera⁸ with guidelines
- Bluetooth®¹ HandsFreeLink® and streaming audio
- SMS text message function¹¹
- Tilt and telescopic steering column
- Driver's seat with 8-way power adjustment
- Front passenger's seat with 4-way power adjustment
- One-motion 60/40 split 3rd-row Magic Seat®
- Pandora®¹² compatibility
- USB Audio Interface¹⁰

EX adds to or replaces LX features

- 17-inch alloy wheels
- Power sliding doors
- Heated power side mirrors
- Smart Entry
- Tri-zone automatic climate control system with humidity control and air filtration
- Honda LaneWatch™⁴
- Push button start
- Driver's seat with 10-way power adjustment, including power lumbar support
- HondaLink™ featuring Aha™² compatibility
- Audio touch-screen

SE adds to or replaces EX features

- HondaVAC®
- Rear Entertainment System with 115-volt power outlet
- SiriusXM® Radio¹³

EX-L adds to or replaces EX features

- Forward Collision Warning (FCW)⁶
- Lane Departure Warning (LDW)⁷
- One-touch power moonroof with tilt feature
- Power tailgate
- Cool box
- Leather-trimmed interior
- Heated front seats
- SiriusXM Radio¹³
- Available Rear Entertainment System¹⁴ with 115-volt power outlet
- Available Honda Satellite-Linked Navigation System™¹⁵ with voice recognition, FM Traffic and multi-angle rearview camera⁸ with guidelines

TOURING adds to or replaces EX-L features

- 18-inch alloy wheels
- Fog lights
- Memory-linked side mirrors with reverse gear tilt-down
- Rear Entertainment System with 115-volt power outlet
- Driver's seat with two-position memory
- 3rd-row folding center armrest

TOURING ELITE adds to or replaces Touring features

- High-Intensity Discharge (HID) headlights with auto-on/off
- Ultrawide Rear Entertainment System with HDMI®¹⁶ technology
- Blind spot information system (BSI)⁵
- HondaVAC
- 650-watt premium audio system with 12 speakers, including subwoofer and 5.1 surround sound theater mode
- HD Radio™¹⁷



Whether you buy or lease a Honda vehicle, Honda Financial Services can assist you with the process. Please ask your dealer which lease or purchase plan best suits your needs.



Honda Care® is an affordable, comprehensive vehicle and travel protection plan backed by Honda reliability, service and parts. Please see your Honda dealer for details.



Manufactured to the same strict standards as Honda vehicles, Honda Genuine Accessories are the perfect way to personalize and protect your vehicle. Please see your Honda dealer for details.

All 2017 Honda vehicles - and any Honda Genuine Accessories installed at the time of vehicle purchase - are covered by a 3-year/36,000-mile limited warranty.¹⁸ Plus, Honda cars and trucks are covered by a 5-year/60,000-mile Limited Powertrain Warranty,¹⁸ too. For more information or assistance, see your Honda dealer or please give us a call at 1-800-33-Honda.

24-hour emergency road service is available to you in the United States, Puerto Rico and Canada throughout your 3-year/36,000-mile limited warranty term. Services include jump-starting, flat tire and lockout assistance, towing, and more (limitations apply). Call 1-866-864-5211.

For more information and complete specifications, go to odyssey.honda.com



Powerful. Agile. Versatile enough to handle almost any condition. It's no wonder Honda is the official vehicle of the NHL.¹⁹

Join the millions of other Honda fans and connect with us socially.²⁰

