

ESTABLECIMIENTO

**OBRA: Sistema de desagües cloacales Fray Mamerto
Esquiú y Valle Viejo – Subetapa II - Catamarca**

FRENTE DE OBRA : JOSE JAOQUIN DE ACUÑA 1100/1200

S.F. del Valle de Catamarca - CATAMARCA

Razón Social: Supercemento S.A.I.C – Eleprint S.A. (UTE)

INFORME

MEDICIONES

NIVELES DE PRESIÓN SONORA (RUIDO)

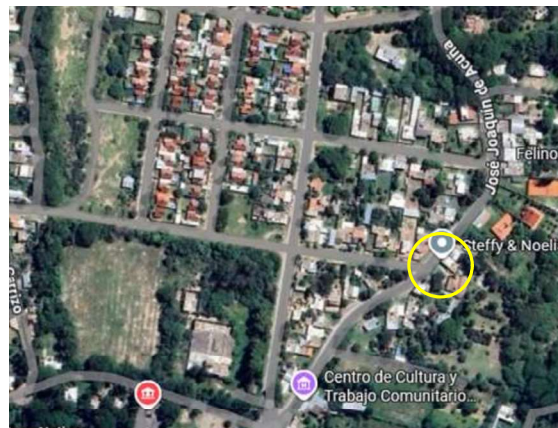
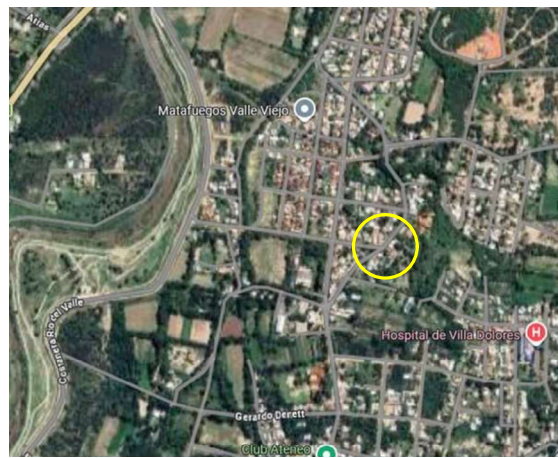
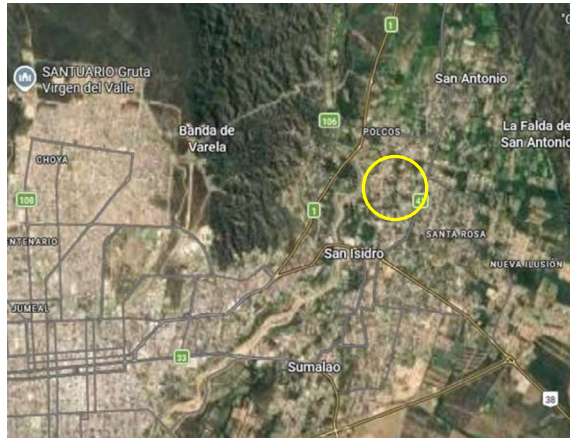
RUIDO PERIMETRAL

30 ENERO 2026



ING. JULIO C. BRIONES
E. O. M. y SEG. en el TRABAJO
R. C. N. C. 1945 - M. T. y S. S.
REGISTRO COPIT 28334

Frente de Obra : JOSE JOAQUIN DE ACUÑA 1100/1200 - (4700) CATAMARCA
Muestreo de Ruido Perimetral 30 de Enero de 2026

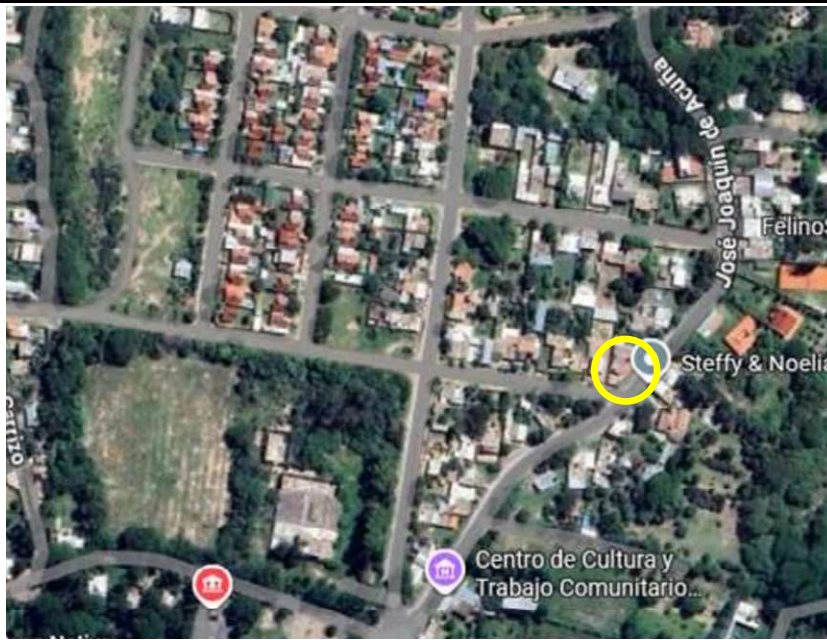


ESTABLECIMIENTO

**Obra: Sistema de desagües cloacales de Fray Mamerto Esquiú y Valle Viejo
Subetapa II – Provincia de Catamarca
SUPERCEMENTO S.A.I.C – ELEPRINT S.A. UTE
ESTUDIO DE BASE - MEDICIÓN DE MATERIAL PARTICULADO Y RUIDO
FRETE DE TRABAJO : JOSE JOAQUIN DE ACUÑA 1100/1200**

ENERO 2026


ING. JULIO C. BRIONES
E.I. INGENIERO EN OBRAS Y SERVICIOS EN EL TRABAJO
R.L.C. N.º 1946 - M.T. y S.S.
Registro COPIT 28034



ESTABLECIMIENTO

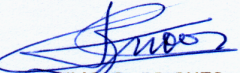
**Obra: Sistema de desagües cloacales de Fray Mamerto Esquiú y Valle Viejo
Subetapa II – Provincia de Catamarca**

SUPERCEMENTO S.A.I.C – ELEPRINT S.A. UTE

ESTUDIO DE BASE - MEDICIÓN DE MATERIAL PARTICULADO Y RUIDO

FRENTE DE TRABAJO : JOSE JOAQUIN DE ACUÑA 1100/1200

ENERO 2026


ING. JULIO C. BRIONES
E. INGENIERO y SEG. en el TRABAJO
REG. NAC. 1945 - M.T. y S.S.
REGISTRO COPIT 28034

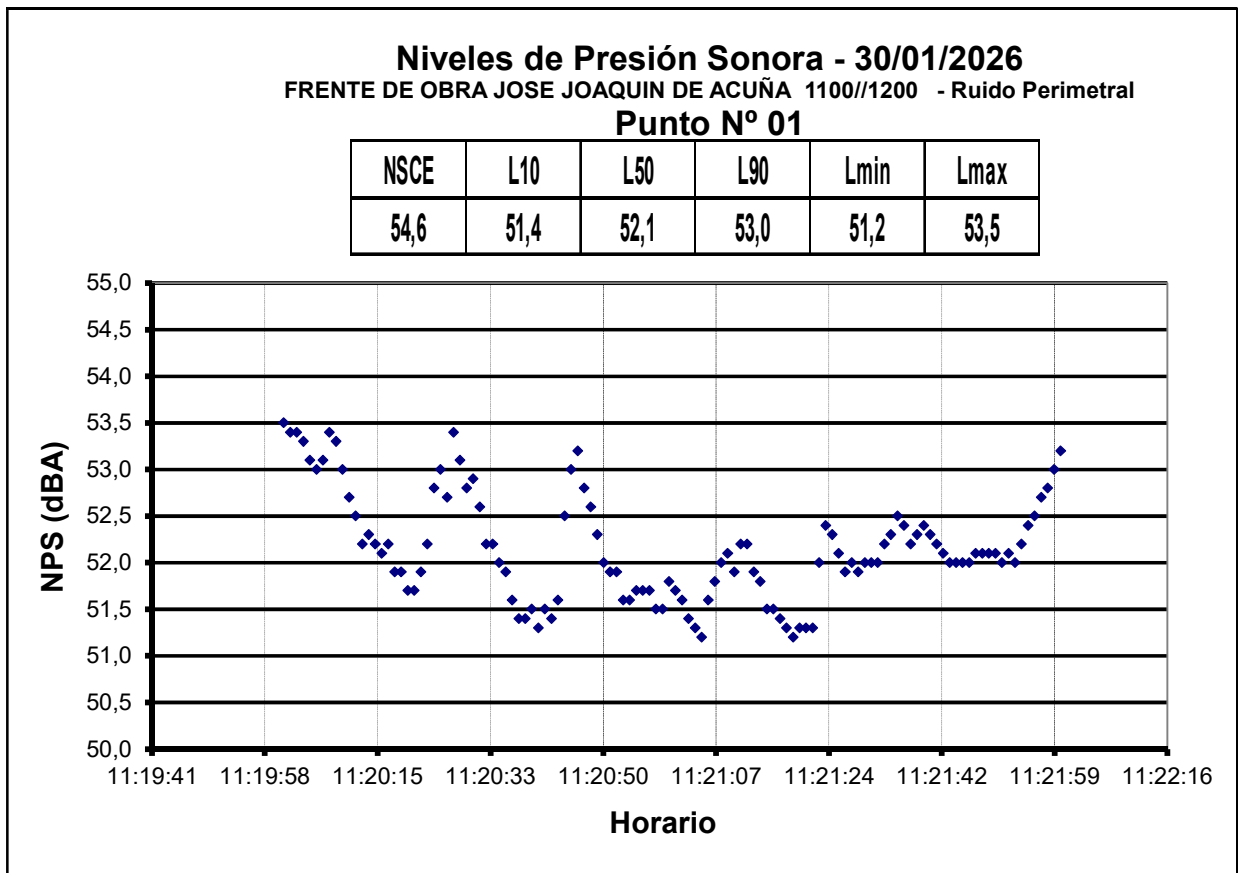
Frente de Obra : JOSE JOAQUIN DE ACUÑA 1100/1200 - (4700) CATAMARCA
Muestreo de Ruido Perimetral 30 de Enero de 2026


Medición Punto de Muestreo #1

Lugar: Al Sur Este del Frente de Obra

Registros: ver al final en Anexo

Resultados:




ING. JULIO C. BRIONES
E. INGENIERO y SEG. en el TRABAJO
R.E.G. NAC. 1945 - M.T. y S.S.
REGISTRO COPiT 28J34

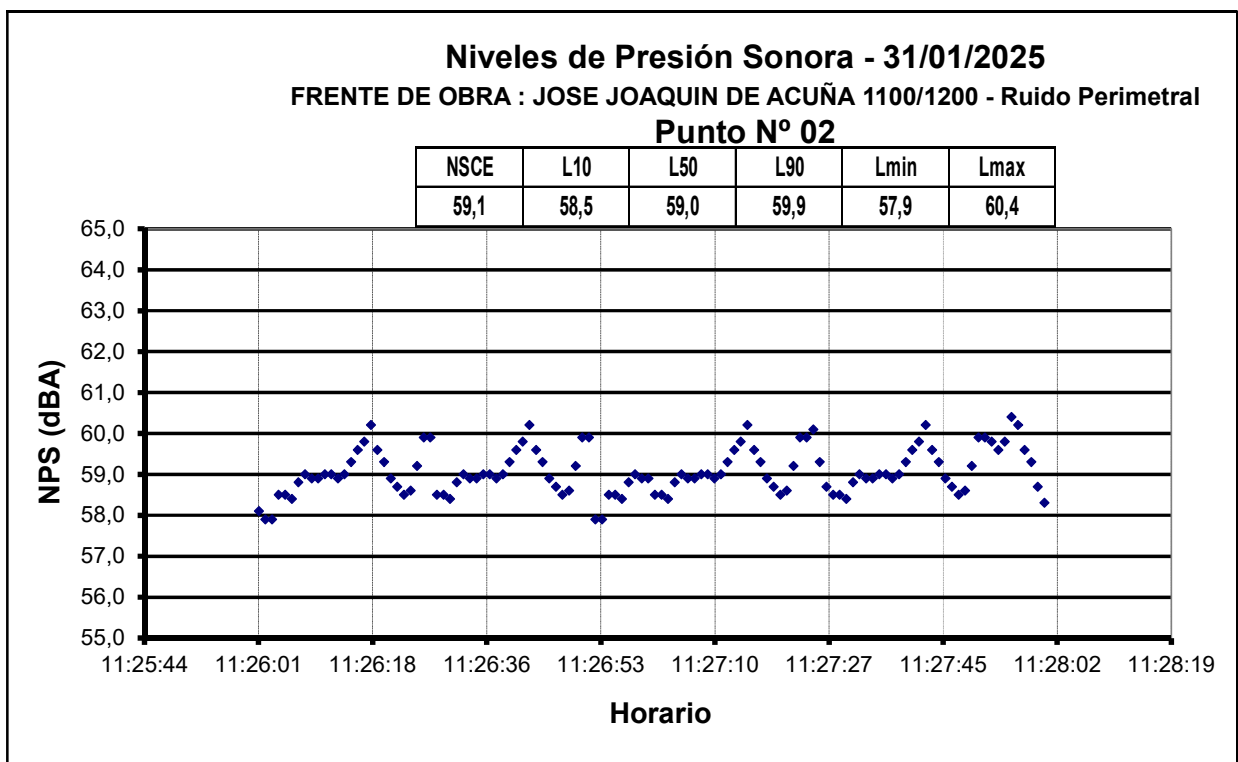
Frente de Obra : JOSE JOAQUIN DE ACUÑA 1100/1200 - (4700) CATAMARCA
Muestreo de Ruido Perimetral 30 de Enero de 2026

Medición Punto de Muestreo #2

Lugar: Al Oeste del Frente de Obra

Registros: ver al final en Anexo

Resultados:




ING. JULIO C. BRIONES
E. INGENIERO y SEG. en el TRABAJO
R.L.C. NAC. 1945 - M.T. y S.S.
REGISTRO COPIT 28334

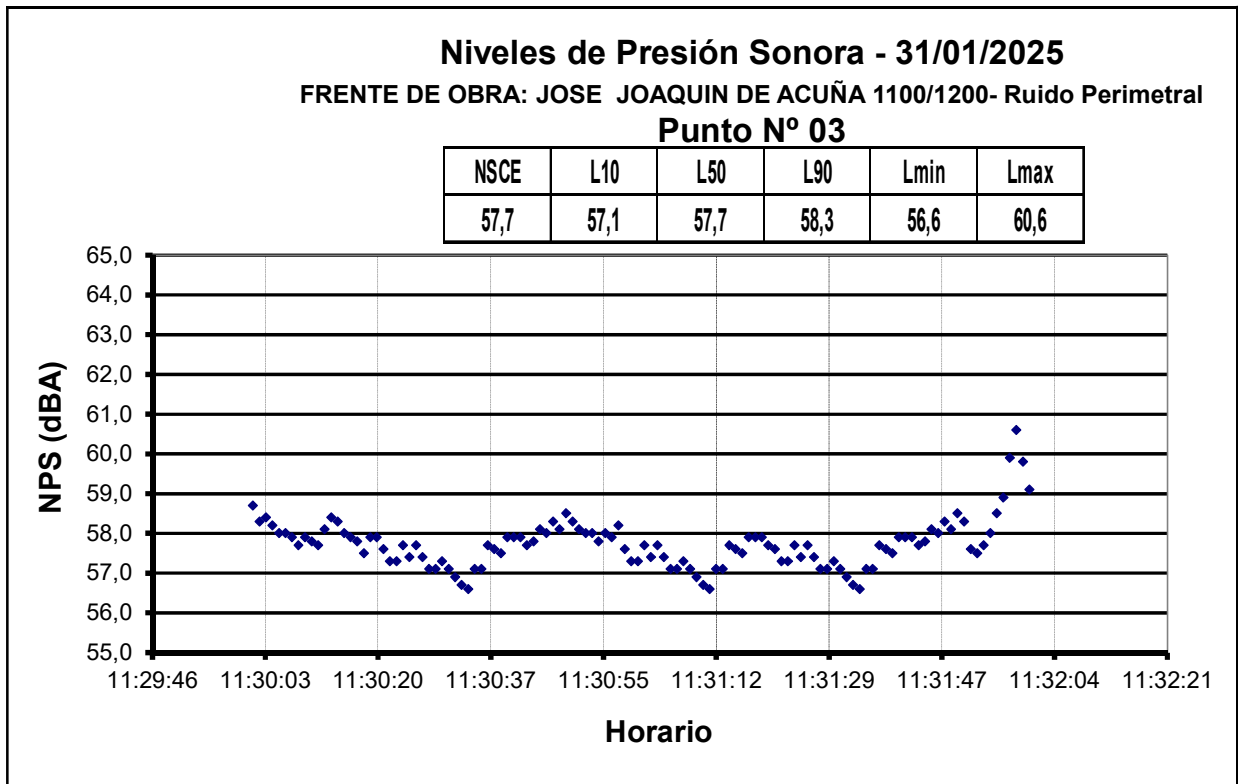
Frente de Obra : JOSE JOAQUIN DE ACUÑA 1100/1200 - (4700) CATAMARCA
Muestreo de Ruido Perimetral 30 de Enero de 2026

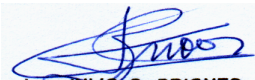
Medición Punto de Muestreo #3

Lugar: Al Este del Frente de Obra

Registros: ver al final en Anexo

Resultados:




ING. JULIO C. BRIONES
E. INGENIERO y SEG. en el TRABAJO
REG. NAC. 1945 - M.T. y S.S.
REGISTRO COPIT 28J34

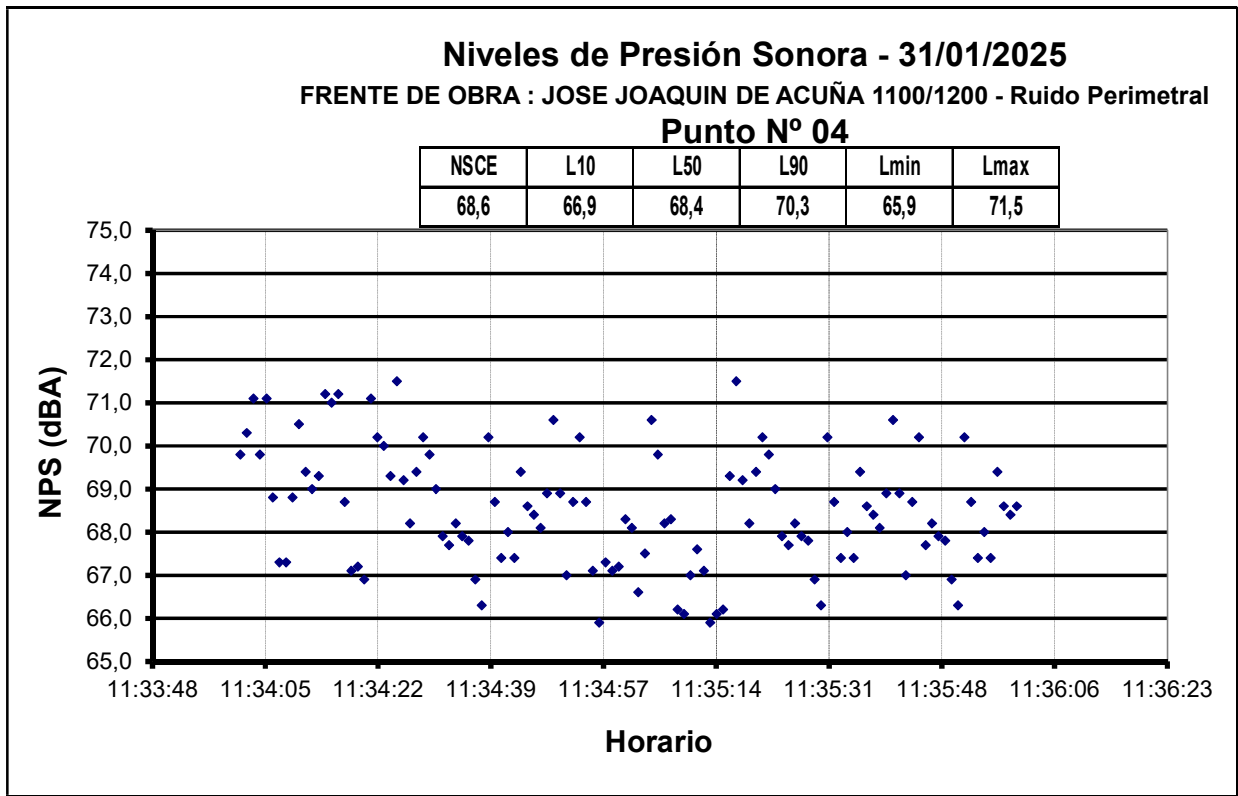
Frente de Obra : JOSE JOAQUIN DE ACUÑA 1100/1200 - (4700) CATAMARCA
Muestreo de Ruido Perimetral 30 de Enero de 2026

Medición Punto de Muestreo #4

Lugar: Al Nor Oeste del Frente de Obra

Registros: ver al final en Anexo

Resultados:



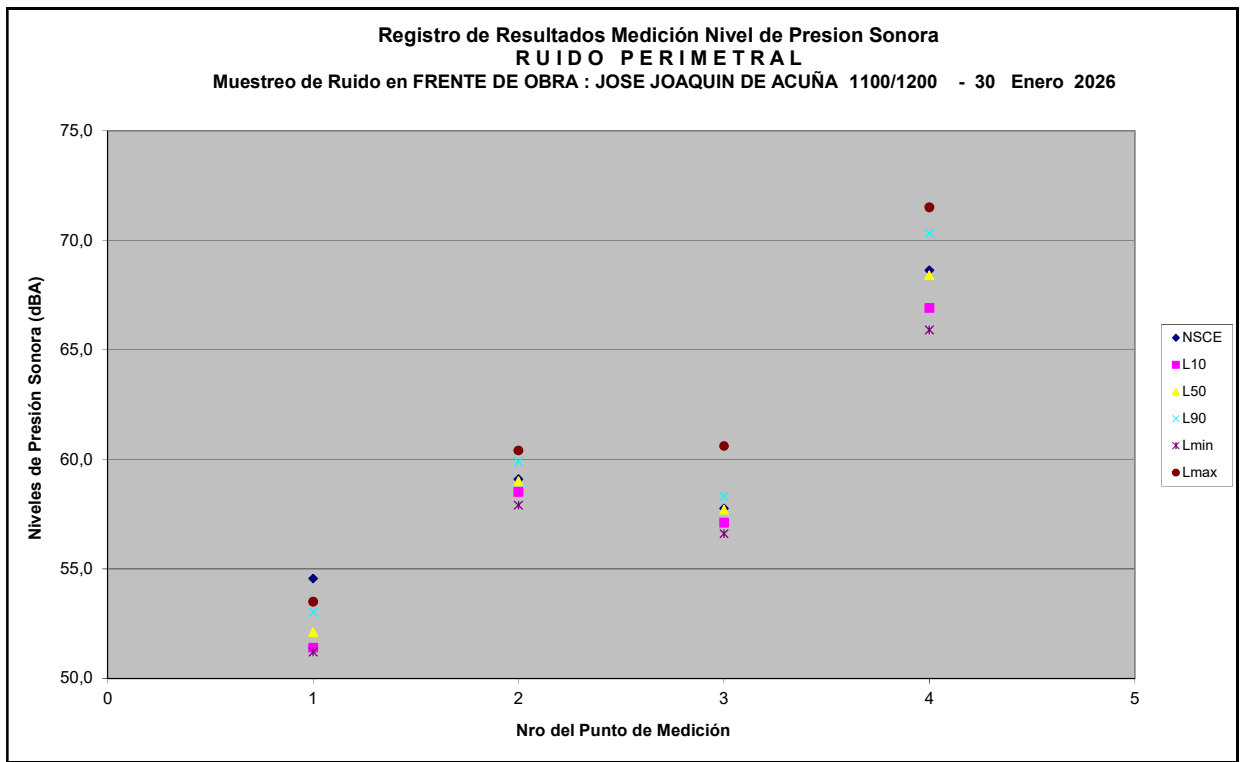

ING. JULIO C. BRIONES
E. INGEN. y SEG. en el TRABAJO
REG. NAC. 1945 - M.T. y S.S.
REGISTRO COPIT 28334

INGENIERIA BRIONES - SERVICIO DE MEDICIONES AMBIENTALES LABORALES

Frente de Obra : JOSE JOAQUIN DE ACUÑA 1100/1200 - (4700) CATAMARCA
Muestreo de Ruido Perimetral 30 de Enero de 2026


RESUMEN

Punto	NSCE	L10	L50	L90	Lmin	Lmax
1	54,6	51,4	52,1	53,0	51,2	53,5
2	59,1	58,5	59,0	59,9	57,9	60,4
3	57,7	57,1	57,7	58,3	56,6	60,6
4	68,6	66,9	68,4	70,3	65,9	71,5



Equipo de Medición:

Sonómetro Datalogger - Marca CEM - Modelo DT 8852 - Serie 240711859


ING. JULIO C. BRIONES
E. INGENIERO y SEG. en el TRABAJO
REG. NAC. 1945 - M.T. y S.S.
REGISTRO COPIT 28J34

Abreviaturas

NSCE (dBA)

(Nivel Sonoro Continuo Equivalente es un promedio pesado sobre las muestras tomadas)

Lmax (dBA)

(Nivel Máximo de Presión Sonora de las muestras tomadas)

L90 (dBA)

(Nivel de Presión Sonora que es mayor que el 90 % de las muestras tomadas)

L50 (dBA)

(Nivel de Presión Sonora que es mayor que el 50 % de las muestras tomadas)

L10 (dBA)

(Nivel de Presión Sonora que no es superado por el 10 % de las muestras tomadas)

Lmin (dBA)

(Nivel Mínimo de Presión Sonora de las muestras tomadas)

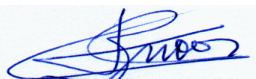


ING. JULIO C. BRIONES
E. INGEN. y SEG. en el TRABAJO
R.E.G. NAC. 1945 - M.T. y S.S.
REGISTRO COPIT 28334

Anexo de Registros

Registros del Punto de Muestreo #01

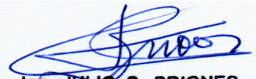
Muestra	AA/MM/DD	HH:MM:SS	dB	Escala	Rango	Slow
"1	26/01/30	11:20:01	53,5	A	40-90	"
"2	26/01/30	11:20:02	53,4	A	40-90	"
"3	26/01/30	11:20:03	53,4	A	40-90	"
"4	26/01/30	11:20:04	53,3	A	40-90	"
"5	26/01/30	11:20:05	53,1	A	40-90	"
"6	26/01/30	11:20:06	53	A	40-90	"
"7	26/01/30	11:20:07	53,1	A	40-90	"
"8	26/01/30	11:20:08	53,4	A	40-90	"
"9	26/01/30	11:20:09	53,3	A	40-90	"
"10	26/01/30	11:20:10	53	A	40-90	"
"11	26/01/30	11:20:11	52,7	A	40-90	"
"12	26/01/30	11:20:12	52,5	A	40-90	"
"13	26/01/30	11:20:13	52,2	A	40-90	"
"14	26/01/30	11:20:14	52,3	A	40-90	"
"15	26/01/30	11:20:15	52,2	A	40-90	"
"16	26/01/30	11:20:16	52,1	A	40-90	"
"17	26/01/30	11:20:17	52,2	A	40-90	"
"18	26/01/30	11:20:18	51,9	A	40-90	"
"19	26/01/30	11:20:19	51,9	A	40-90	"
"20	26/01/30	11:20:20	51,7	A	40-90	"
"21	26/01/30	11:20:21	51,7	A	40-90	"
"22	26/01/30	11:20:22	51,9	A	40-90	"
"23	26/01/30	11:20:23	52,2	A	40-90	"
"24	26/01/30	11:20:24	52,8	A	40-90	"
"25	26/01/30	11:20:25	53	A	40-90	"
"26	26/01/30	11:20:26	52,7	A	40-90	"
"27	26/01/30	11:20:27	53,4	A	40-90	"
"28	26/01/30	11:20:28	53,1	A	40-90	"
"29	26/01/30	11:20:29	52,8	A	40-90	"
"30	26/01/30	11:20:30	52,9	A	40-90	"
"31	26/01/30	11:20:31	52,6	A	40-90	"
"32	26/01/30	11:20:32	52,2	A	40-90	"
"33	26/01/30	11:20:33	52,2	A	40-90	"
"34	26/01/30	11:20:34	52	A	40-90	"
"35	26/01/30	11:20:35	51,9	A	40-90	"
"36	26/01/30	11:20:36	51,6	A	40-90	"
"37	26/01/30	11:20:37	51,4	A	40-90	"



ING. JULIO C. BRIONES
 E. P. M.C. y SEG. en el TRABAJO
 REG. NAC. 1945 - M.T. / S.S.
 REGISTRO COPIT 28034

INGENIERIA BRIONES - SERVICIO DE MEDICIONES AMBIENTALES LABORALES

Frente de Obra : JOSE JOAQUIN DE ACUÑA 1100/1200 - (4700) CATAMARCA						
Muestreo de Ruido Perimetral					30 de Enero de 2026	
"38	26/01/30	11:20:38	51,4	A	40-90	"
"39	26/01/30	11:20:39	51,5	A	40-90	"
"40	26/01/30	11:20:40	51,3	A	40-90	"
"41	26/01/30	11:20:41	51,5	A	40-90	"
"42	26/01/30	11:20:42	51,4	A	40-90	"
"43	26/01/30	11:20:43	51,6	A	40-90	"
"44	26/01/30	11:20:44	52,5	A	40-90	"
"45	26/01/30	11:20:45	53	A	40-90	"
"46	26/01/30	11:20:46	53,2	A	40-90	"
"47	26/01/30	11:20:47	52,8	A	40-90	"
"48	26/01/30	11:20:48	52,6	A	40-90	"
"49	26/01/30	11:20:49	52,3	A	40-90	"
"50	26/01/30	11:20:50	52	A	40-90	"
"51	26/01/30	11:20:51	51,9	A	40-90	"
"52	26/01/30	11:20:52	51,9	A	40-90	"
"53	26/01/30	11:20:53	51,6	A	40-90	"
"54	26/01/30	11:20:54	51,6	A	40-90	"
"55	26/01/30	11:20:55	51,7	A	40-90	"
"56	26/01/30	11:20:56	51,7	A	40-90	"
"57	26/01/30	11:20:57	51,7	A	40-90	"
"58	26/01/30	11:20:58	51,5	A	40-90	"
"59	26/01/30	11:20:59	51,5	A	40-90	"
"60	26/01/30	11:21:00	51,8	A	40-90	"
"61	26/01/30	11:21:01	51,7	A	40-90	"
"62	26/01/30	11:21:02	51,6	A	40-90	"
"63	26/01/30	11:21:03	51,4	A	40-90	"
"64	26/01/30	11:21:04	51,3	A	40-90	"
"65	26/01/30	11:21:05	51,2	A	40-90	"
"66	26/01/30	11:21:06	51,6	A	40-90	"
"67	26/01/30	11:21:07	51,8	A	40-90	"
"68	26/01/30	11:21:08	52	A	40-90	"
"69	26/01/30	11:21:09	52,1	A	40-90	"
"70	26/01/30	11:21:10	51,9	A	40-90	"
"71	26/01/30	11:21:11	52,2	A	40-90	"
"72	26/01/30	11:21:12	52,2	A	40-90	"
"73	26/01/30	11:21:13	51,9	A	40-90	"
"74	26/01/30	11:21:14	51,8	A	40-90	"
"75	26/01/30	11:21:15	51,5	A	40-90	"
"76	26/01/30	11:21:16	51,5	A	40-90	"
"77	26/01/30	11:21:17	51,4	A	40-90	"
"78	26/01/30	11:21:18	51,3	A	40-90	"
"79	26/01/30	11:21:19	51,2	A	40-90	"
"80	26/01/30	11:21:20	51,3	A	40-90	"
"81	26/01/30	11:21:21	51,3	A	40-90	"
"82	26/01/30	11:21:22	51,3	A	40-90	"
"83	26/01/30	11:21:23	52	A	40-90	"
"84	26/01/30	11:21:24	52,4	A	40-90	"



ING. JULIO C. BRIONES
 E. INGENIERO y SEG. en el TRABAJO
 R.E. N.º 1945 - M.T. y S.S.
 REGISTRO COPIT 26J34

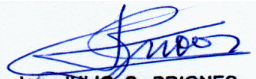
INGENIERIA BRIONES - SERVICIO DE MEDICIONES AMBIENTALES LABORALES

Frente de Obra : JOSE JOAQUIN DE ACUÑA 1100/1200 - (4700) CATAMARCA
Muestreo de Ruido Perimetral 30 de Enero de 2026

"85	26/01/30	11:21:25	52,3	A	40-90	"
"86	26/01/30	11:21:26	52,1	A	40-90	"
"87	26/01/30	11:21:27	51,9	A	40-90	"
"88	26/01/30	11:21:28	52	A	40-90	"
"89	26/01/30	11:21:29	51,9	A	40-90	"
"90	26/01/30	11:21:30	52	A	40-90	"
"91	26/01/30	11:21:31	52	A	40-90	"
"92	26/01/30	11:21:32	52	A	40-90	"
"93	26/01/30	11:21:33	52,2	A	40-90	"
"94	26/01/30	11:21:34	52,3	A	40-90	"
"95	26/01/30	11:21:35	52,5	A	40-90	"
"96	26/01/30	11:21:36	52,4	A	40-90	"
"97	26/01/30	11:21:37	52,2	A	40-90	"
"98	26/01/30	11:21:38	52,3	A	40-90	"
"99	26/01/30	11:21:39	52,4	A	40-90	"
"100	26/01/30	11:21:40	52,3	A	40-90	"
"101	26/01/30	11:21:41	52,2	A	40-90	"
"102	26/01/30	11:21:42	52,1	A	40-90	"
"103	26/01/30	11:21:43	52	A	40-90	"
"104	26/01/30	11:21:44	52	A	40-90	"
"105	26/01/30	11:21:45	52	A	40-90	"
"106	26/01/30	11:21:46	52	A	40-90	"
"107	26/01/30	11:21:47	52,1	A	40-90	"
"108	26/01/30	11:21:48	52,1	A	40-90	"
"109	26/01/30	11:21:49	52,1	A	40-90	"
"110	26/01/30	11:21:50	52,1	A	40-90	"
"111	26/01/30	11:21:51	52	A	40-90	"
"112	26/01/30	11:21:52	52,1	A	40-90	"
"113	26/01/30	11:21:53	52	A	40-90	"
"114	26/01/30	11:21:54	52,2	A	40-90	"
"115	26/01/30	11:21:55	52,4	A	40-90	"
"116	26/01/30	11:21:56	52,5	A	40-90	"
"117	26/01/30	11:21:57	52,7	A	40-90	"
"118	26/01/30	11:21:58	52,8	A	40-90	"
"119	26/01/30	11:21:59	53	A	40-90	"
"120	26/01/30	11:22:00	53,2	A	40-90	"

Registros del Punto de Muestreo #02

Muestra	AA/MM/DD	HH:MM:SS	dB	Escala	Rango	Slow
"1	26/01/30	11:26:01	58,1	A	40-90	"
"2	26/01/30	11:26:02	57,9	A	40-90	"
"3	26/01/30	11:26:03	57,9	A	40-90	"
"4	26/01/30	11:26:04	58,5	A	40-90	"
"5	26/01/30	11:26:05	58,5	A	40-90	"
"6	26/01/30	11:26:06	58,4	A	40-90	"



ING. JULIO C. BRIONES
 E. INGENIERO Y SEG. en el TRABAJO
 REG. NAC. 1945 - M.T. y S.S.
 REGISTRO COPIT 26J34

INGENIERIA BRIONES - SERVICIO DE MEDICIONES AMBIENTALES LABORALES

Frente de Obra : JOSE JOAQUIN DE ACUÑA 1100/1200 - (4700) CATAMARCA

Muestreo de Ruido Perimetral 30 de Enero de 2026

"7	26/01/30	11:26:07	58,8	A	40-90	"
"8	26/01/30	11:26:08	59	A	40-90	"
"9	26/01/30	11:26:09	58,9	A	40-90	"
"10	26/01/30	11:26:10	58,9	A	40-90	"
"11	26/01/30	11:26:11	59	A	40-90	"
"12	26/01/30	11:26:12	59	A	40-90	"
"13	26/01/30	11:26:13	58,9	A	40-90	"
"14	26/01/30	11:26:14	59	A	40-90	"
"15	26/01/30	11:26:15	59,3	A	40-90	"
"16	26/01/30	11:26:16	59,6	A	40-90	"
"17	26/01/30	11:26:17	59,8	A	40-90	"
"18	26/01/30	11:26:18	60,2	A	40-90	"
"19	26/01/30	11:26:19	59,6	A	40-90	"
"20	26/01/30	11:26:20	59,3	A	40-90	"
"21	26/01/30	11:26:21	58,9	A	40-90	"
"22	26/01/30	11:26:22	58,7	A	40-90	"
"23	26/01/30	11:26:23	58,5	A	40-90	"
"24	26/01/30	11:26:24	58,6	A	40-90	"
"25	26/01/30	11:26:25	59,2	A	40-90	"
"26	26/01/30	11:26:26	59,9	A	40-90	"
"27	26/01/30	11:26:27	59,9	A	40-90	"
"28	26/01/30	11:26:28	58,5	A	40-90	"
"29	26/01/30	11:26:29	58,5	A	40-90	"
"30	26/01/30	11:26:30	58,4	A	40-90	"
"31	26/01/30	11:26:31	58,8	A	40-90	"
"32	26/01/30	11:26:32	59	A	40-90	"
"33	26/01/30	11:26:33	58,9	A	40-90	"
"34	26/01/30	11:26:34	58,9	A	40-90	"
"35	26/01/30	11:26:35	59	A	40-90	"
"36	26/01/30	11:26:36	59	A	40-90	"
"37	26/01/30	11:26:37	58,9	A	40-90	"
"38	26/01/30	11:26:38	59	A	40-90	"
"39	26/01/30	11:26:39	59,3	A	40-90	"
"40	26/01/30	11:26:40	59,6	A	40-90	"
"41	26/01/30	11:26:41	59,8	A	40-90	"
"42	26/01/30	11:26:42	60,2	A	40-90	"
"43	26/01/30	11:26:43	59,6	A	40-90	"
"44	26/01/30	11:26:44	59,3	A	40-90	"
"45	26/01/30	11:26:45	58,9	A	40-90	"
"46	26/01/30	11:26:46	58,7	A	40-90	"
"47	26/01/30	11:26:47	58,5	A	40-90	"
"48	26/01/30	11:26:48	58,6	A	40-90	"
"49	26/01/30	11:26:49	59,2	A	40-90	"
"50	26/01/30	11:26:50	59,9	A	40-90	"
"51	26/01/30	11:26:51	59,9	A	40-90	"
"52	26/01/30	11:26:52	57,9	A	40-90	"
"53	26/01/30	11:26:53	57,9	A	40-90	"



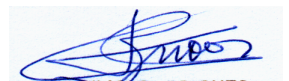
ING. JULIO C. BRIONES
 E. O. M. y SEG. en el TRABAJO
 R.E. N.º 1946 - M.T., S.S.
 REGISTRO COPIT 28334

INGENIERIA BRIONES - SERVICIO DE MEDICIONES AMBIENTALES LABORALES

Frente de Obra : JOSE JOAQUIN DE ACUÑA 1100/1200 - (4700) CATAMARCA

Muestreo de Ruido Perimetral 30 de Enero de 2026

"54	26/01/30	11:26:54	58,5	A	40-90	"
"55	26/01/30	11:26:55	58,5	A	40-90	"
"56	26/01/30	11:26:56	58,4	A	40-90	"
"57	26/01/30	11:26:57	58,8	A	40-90	"
"58	26/01/30	11:26:58	59	A	40-90	"
"59	26/01/30	11:26:59	58,9	A	40-90	"
"60	26/01/30	11:27:00	58,9	A	40-90	"
"61	26/01/30	11:27:01	58,5	A	40-90	"
"62	26/01/30	11:27:02	58,5	A	40-90	"
"63	26/01/30	11:27:03	58,4	A	40-90	"
"64	26/01/30	11:27:04	58,8	A	40-90	"
"65	26/01/30	11:27:05	59	A	40-90	"
"66	26/01/30	11:27:06	58,9	A	40-90	"
"67	26/01/30	11:27:07	58,9	A	40-90	"
"68	26/01/30	11:27:08	59	A	40-90	"
"69	26/01/30	11:27:09	59	A	40-90	"
"70	26/01/30	11:27:10	58,9	A	40-90	"
"71	26/01/30	11:27:11	59	A	40-90	"
"72	26/01/30	11:27:12	59,3	A	40-90	"
"73	26/01/30	11:27:13	59,6	A	40-90	"
"74	26/01/30	11:27:14	59,8	A	40-90	"
"75	26/01/30	11:27:15	60,2	A	40-90	"
"76	26/01/30	11:27:16	59,6	A	40-90	"
"77	26/01/30	11:27:17	59,3	A	40-90	"
"78	26/01/30	11:27:18	58,9	A	40-90	"
"79	26/01/30	11:27:19	58,7	A	40-90	"
"80	26/01/30	11:27:20	58,5	A	40-90	"
"81	26/01/30	11:27:21	58,6	A	40-90	"
"82	26/01/30	11:27:22	59,2	A	40-90	"
"83	26/01/30	11:27:23	59,9	A	40-90	"
"84	26/01/30	11:27:24	59,9	A	40-90	"
"85	26/01/30	11:27:25	60,1	A	40-90	"
"86	26/01/30	11:27:26	59,3	A	40-90	"
"87	26/01/30	11:27:27	58,7	A	40-90	"
"88	26/01/30	11:27:28	58,5	A	40-90	"
"89	26/01/30	11:27:29	58,5	A	40-90	"
"90	26/01/30	11:27:30	58,4	A	40-90	"
"91	26/01/30	11:27:31	58,8	A	40-90	"
"92	26/01/30	11:27:32	59	A	40-90	"
"93	26/01/30	11:27:33	58,9	A	40-90	"
"94	26/01/30	11:27:34	58,9	A	40-90	"
"95	26/01/30	11:27:35	59	A	40-90	"
"96	26/01/30	11:27:36	59	A	40-90	"
"97	26/01/30	11:27:37	58,9	A	40-90	"
"98	26/01/30	11:27:38	59	A	40-90	"
"99	26/01/30	11:27:39	59,3	A	40-90	"
"100	26/01/30	11:27:40	59,6	A	40-90	"



ING. JULIO C. BRIONES
E. INGEN. y SEG. en el TRABAJO
R.L.C. NAC. 1945 - M.T., S.S.
REGISTRO COPIT 28034

INGENIERIA BRIONES - SERVICIO DE MEDICIONES AMBIENTALES LABORALES

Frente de Obra : JOSE JOAQUIN DE ACUÑA 1100/1200 - (4700) CATAMARCA

Muestreo de Ruido Perimetral 30 de Enero de 2026

"101	26/01/30	11:27:41	59,8	A	40-90	"
"102	26/01/30	11:27:42	60,2	A	40-90	"
"103	26/01/30	11:27:43	59,6	A	40-90	"
"104	26/01/30	11:27:44	59,3	A	40-90	"
"105	26/01/30	11:27:45	58,9	A	40-90	"
"106	26/01/30	11:27:46	58,7	A	40-90	"
"107	26/01/30	11:27:47	58,5	A	40-90	"
"108	26/01/30	11:27:48	58,6	A	40-90	"
"109	26/01/30	11:27:49	59,2	A	40-90	"
"110	26/01/30	11:27:50	59,9	A	40-90	"
"111	26/01/30	11:27:51	59,9	A	40-90	"
"112	26/01/30	11:27:52	59,8	A	40-90	"
"113	26/01/30	11:27:53	59,6	A	40-90	"
"114	26/01/30	11:27:54	59,8	A	40-90	"
"115	26/01/30	11:27:55	60,4	A	40-90	"
"116	26/01/30	11:27:56	60,2	A	40-90	"
"117	26/01/30	11:27:57	59,6	A	40-90	"
"118	26/01/30	11:27:58	59,3	A	40-90	"
"119	26/01/30	11:27:59	58,7	A	40-90	"
"120	26/01/30	11:28:00	58,3	A	40-90	"

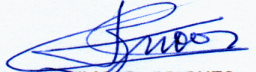
Registros del Punto de Muestreo #03

Muestra	AA/MM/DD	HH:MM:SS	dB	Escala	Rango	Slow
"1	26/01/30	11:30:01	58,7	A	40-90	"
"2	26/01/30	11:30:02	58,3	A	40-90	"
"3	26/01/30	11:30:03	58,4	A	40-90	"
"4	26/01/30	11:30:04	58,2	A	40-90	"
"5	26/01/30	11:30:05	58	A	40-90	"
"6	26/01/30	11:30:06	58	A	40-90	"
"7	26/01/30	11:30:07	57,9	A	40-90	"
"8	26/01/30	11:30:08	57,7	A	40-90	"
"9	26/01/30	11:30:09	57,9	A	40-90	"
"10	26/01/30	11:30:10	57,8	A	40-90	"
"11	26/01/30	11:30:11	57,7	A	40-90	"
"12	26/01/30	11:30:12	58,1	A	40-90	"
"13	26/01/30	11:30:13	58,4	A	40-90	"
"14	26/01/30	11:30:14	58,3	A	40-90	"
"15	26/01/30	11:30:15	58	A	40-90	"
"16	26/01/30	11:30:16	57,9	A	40-90	"
"17	26/01/30	11:30:17	57,8	A	40-90	"
"18	26/01/30	11:30:18	57,5	A	40-90	"
"19	26/01/30	11:30:19	57,9	A	40-90	"
"20	26/01/30	11:30:20	57,9	A	40-90	"
"21	26/01/30	11:30:21	57,6	A	40-90	"
"22	26/01/30	11:30:22	57,3	A	40-90	"


ING. JULIO C. BRIONES
 E. O. M. y SEG. en el TRABAJO
 REG. NAC. 1946 - M.T., S.S.
 REGISTRO COPIT 28334

INGENIERIA BRIONES - SERVICIO DE MEDICIONES AMBIENTALES LABORALES

Frente de Obra : JOSE JOAQUIN DE ACUÑA 1100/1200 - (4700) CATAMARCA						
Muestreo de Ruido Perimetral					30 de Enero de 2026	
"23	26/01/30	11:30:23	57,3	A	40-90	"
"24	26/01/30	11:30:24	57,7	A	40-90	"
"25	26/01/30	11:30:25	57,4	A	40-90	"
"26	26/01/30	11:30:26	57,7	A	40-90	"
"27	26/01/30	11:30:27	57,4	A	40-90	"
"28	26/01/30	11:30:28	57,1	A	40-90	"
"29	26/01/30	11:30:29	57,1	A	40-90	"
"30	26/01/30	11:30:30	57,3	A	40-90	"
"31	26/01/30	11:30:31	57,1	A	40-90	"
"32	26/01/30	11:30:32	56,9	A	40-90	"
"33	26/01/30	11:30:33	56,7	A	40-90	"
"34	26/01/30	11:30:34	56,6	A	40-90	"
"35	26/01/30	11:30:35	57,1	A	40-90	"
"36	26/01/30	11:30:36	57,1	A	40-90	"
"37	26/01/30	11:30:37	57,7	A	40-90	"
"38	26/01/30	11:30:38	57,6	A	40-90	"
"39	26/01/30	11:30:39	57,5	A	40-90	"
"40	26/01/30	11:30:40	57,9	A	40-90	"
"41	26/01/30	11:30:41	57,9	A	40-90	"
"42	26/01/30	11:30:42	57,9	A	40-90	"
"43	26/01/30	11:30:43	57,7	A	40-90	"
"44	26/01/30	11:30:44	57,8	A	40-90	"
"45	26/01/30	11:30:45	58,1	A	40-90	"
"46	26/01/30	11:30:46	58	A	40-90	"
"47	26/01/30	11:30:47	58,3	A	40-90	"
"48	26/01/30	11:30:48	58,1	A	40-90	"
"49	26/01/30	11:30:49	58,5	A	40-90	"
"50	26/01/30	11:30:50	58,3	A	40-90	"
"51	26/01/30	11:30:51	58,1	A	40-90	"
"52	26/01/30	11:30:52	58	A	40-90	"
"53	26/01/30	11:30:53	58	A	40-90	"
"54	26/01/30	11:30:54	57,8	A	40-90	"
"55	26/01/30	11:30:55	58	A	40-90	"
"56	26/01/30	11:30:56	57,9	A	40-90	"
"57	26/01/30	11:30:57	58,2	A	40-90	"
"58	26/01/30	11:30:58	57,6	A	40-90	"
"59	26/01/30	11:30:59	57,3	A	40-90	"
"60	26/01/30	11:31:00	57,3	A	40-90	"
"61	26/01/30	11:31:01	57,7	A	40-90	"
"62	26/01/30	11:31:02	57,4	A	40-90	"
"63	26/01/30	11:31:03	57,7	A	40-90	"
"64	26/01/30	11:31:04	57,4	A	40-90	"
"65	26/01/30	11:31:05	57,1	A	40-90	"
"66	26/01/30	11:31:06	57,1	A	40-90	"
"67	26/01/30	11:31:07	57,3	A	40-90	"
"68	26/01/30	11:31:08	57,1	A	40-90	"
"69	26/01/30	11:31:09	56,9	A	40-90	"



ING. JULIO C. BRIONES
 E. S. P. M. C. y SEG. en el TRABAJO
 R. C. N. C. 1945 - M. T. , S. S.
 REGISTRO COPIT 28334

INGENIERIA BRIONES - SERVICIO DE MEDICIONES AMBIENTALES LABORALES

Frente de Obra : JOSE JOAQUIN DE ACUÑA 1100/1200 - (4700) CATAMARCA						30 de Enero de 2026
Muestreo de Ruido Perimetral						
"70	26/01/30	11:31:10	56,7	A	40-90	"
"71	26/01/30	11:31:11	56,6	A	40-90	"
"72	26/01/30	11:31:12	57,1	A	40-90	"
"73	26/01/30	11:31:13	57,1	A	40-90	"
"74	26/01/30	11:31:14	57,7	A	40-90	"
"75	26/01/30	11:31:15	57,6	A	40-90	"
"76	26/01/30	11:31:16	57,5	A	40-90	"
"77	26/01/30	11:31:17	57,9	A	40-90	"
"78	26/01/30	11:31:18	57,9	A	40-90	"
"79	26/01/30	11:31:19	57,9	A	40-90	"
"80	26/01/30	11:31:20	57,7	A	40-90	"
"81	26/01/30	11:31:21	57,6	A	40-90	"
"82	26/01/30	11:31:22	57,3	A	40-90	"
"83	26/01/30	11:31:23	57,3	A	40-90	"
"84	26/01/30	11:31:24	57,7	A	40-90	"
"85	26/01/30	11:31:25	57,4	A	40-90	"
"86	26/01/30	11:31:26	57,7	A	40-90	"
"87	26/01/30	11:31:27	57,4	A	40-90	"
"88	26/01/30	11:31:28	57,1	A	40-90	"
"89	26/01/30	11:31:29	57,1	A	40-90	"
"90	26/01/30	11:31:30	57,3	A	40-90	"
"91	26/01/30	11:31:31	57,1	A	40-90	"
"92	26/01/30	11:31:32	56,9	A	40-90	"
"93	26/01/30	11:31:33	56,7	A	40-90	"
"94	26/01/30	11:31:34	56,6	A	40-90	"
"95	26/01/30	11:31:35	57,1	A	40-90	"
"96	26/01/30	11:31:36	57,1	A	40-90	"
"97	26/01/30	11:31:37	57,7	A	40-90	"
"98	26/01/30	11:31:38	57,6	A	40-90	"
"99	26/01/30	11:31:39	57,5	A	40-90	"
"100	26/01/30	11:31:40	57,9	A	40-90	"
"101	26/01/30	11:31:41	57,9	A	40-90	"
"102	26/01/30	11:31:42	57,9	A	40-90	"
"103	26/01/30	11:31:43	57,7	A	40-90	"
"104	26/01/30	11:31:44	57,8	A	40-90	"
"105	26/01/30	11:31:45	58,1	A	40-90	"
"106	26/01/30	11:31:46	58	A	40-90	"
"107	26/01/30	11:31:47	58,3	A	40-90	"
"108	26/01/30	11:31:48	58,1	A	40-90	"
"109	26/01/30	11:31:49	58,5	A	40-90	"
"110	26/01/30	11:31:50	58,3	A	40-90	"
"111	26/01/30	11:31:51	57,6	A	40-90	"
"112	26/01/30	11:31:52	57,5	A	40-90	"
"113	26/01/30	11:31:53	57,7	A	40-90	"
"114	26/01/30	11:31:54	58	A	40-90	"
"115	26/01/30	11:31:55	58,5	A	40-90	"
"116	26/01/30	11:31:56	58,9	A	40-90	"



ING. JULIO C. BRIONES
 E. O. HIG. y SEG. en el TRABAJO
 REG. NAC. 1945 - M.T. y S.S.
 REGISTRO COPIT 28J34

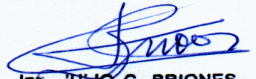
INGENIERIA BRIONES - SERVICIO DE MEDICIONES AMBIENTALES LABORALES

Frente de Obra : JOSE JOAQUIN DE ACUÑA 1100/1200 - (4700) CATAMARCA
Muestreo de Ruido Perimetral 30 de Enero de 2026

"117	26/01/30	11:31:57	59,9	A	40-90	"
"118	26/01/30	11:31:58	60,6	A	40-90	"
"119	26/01/30	11:31:59	59,8	A	40-90	"
"120	26/01/30	11:32:00	59,1	A	40-90	"

Registros del Punto de Muestreo #04

Muestra	AA/MM/DD	HH:MM:SS	dB	Escala	Rango	Slow
"1	26/01/30	11:34:01	69,8	A	40-90	"
"2	26/01/30	11:34:02	70,3	A	40-90	"
"3	26/01/30	11:34:03	71,1	A	40-90	"
"4	26/01/30	11:34:04	69,8	A	40-90	"
"5	26/01/30	11:34:05	71,1	A	40-90	"
"6	26/01/30	11:34:06	68,8	A	40-90	"
"7	26/01/30	11:34:07	67,3	A	40-90	"
"8	26/01/30	11:34:08	67,3	A	40-90	"
"9	26/01/30	11:34:09	68,8	A	40-90	"
"10	26/01/30	11:34:10	70,5	A	40-90	"
"11	26/01/30	11:34:11	69,4	A	40-90	"
"12	26/01/30	11:34:12	69	A	40-90	"
"13	26/01/30	11:34:13	69,3	A	40-90	"
"14	26/01/30	11:34:14	71,2	A	40-90	"
"15	26/01/30	11:34:15	71	A	40-90	"
"16	26/01/30	11:34:16	71,2	A	40-90	"
"17	26/01/30	11:34:17	68,7	A	40-90	"
"18	26/01/30	11:34:18	67,1	A	40-90	"
"19	26/01/30	11:34:19	67,2	A	40-90	"
"20	26/01/30	11:34:20	66,9	A	40-90	"
"21	26/01/30	11:34:21	71,1	A	40-90	"
"22	26/01/30	11:34:22	70,2	A	40-90	"
"23	26/01/30	11:34:23	70	A	40-90	"
"24	26/01/30	11:34:24	69,3	A	40-90	"
"25	26/01/30	11:34:25	71,5	A	40-90	"
"26	26/01/30	11:34:26	69,2	A	40-90	"
"27	26/01/30	11:34:27	68,2	A	40-90	"
"28	26/01/30	11:34:28	69,4	A	40-90	"
"29	26/01/30	11:34:29	70,2	A	40-90	"
"30	26/01/30	11:34:30	69,8	A	40-90	"
"31	26/01/30	11:34:31	69	A	40-90	"
"32	26/01/30	11:34:32	67,9	A	40-90	"
"33	26/01/30	11:34:33	67,7	A	40-90	"
"34	26/01/30	11:34:34	68,2	A	40-90	"
"35	26/01/30	11:34:35	67,9	A	40-90	"
"36	26/01/30	11:34:36	67,8	A	40-90	"
"37	26/01/30	11:34:37	66,9	A	40-90	"
"38	26/01/30	11:34:38	66,3	A	40-90	"



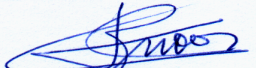
ING. JULIO C. BRIONES
 E. MIG. y SEG. en el TRABAJO
 R.L.C. NAC. 1945 - M.T. y S.S.
 REGISTRO COPIT 26034

INGENIERIA BRIONES - SERVICIO DE MEDICIONES AMBIENTALES LABORALES

Frente de Obra : JOSE JOAQUIN DE ACUÑA 1100/1200 - (4700) CATAMARCA

Muestreo de Ruido Perimetral 30 de Enero de 2026

"39	26/01/30	11:34:39	70,2	A	40-90	"
"40	26/01/30	11:34:40	68,7	A	40-90	"
"41	26/01/30	11:34:41	67,4	A	40-90	"
"42	26/01/30	11:34:42	68	A	40-90	"
"43	26/01/30	11:34:43	67,4	A	40-90	"
"44	26/01/30	11:34:44	69,4	A	40-90	"
"45	26/01/30	11:34:45	68,6	A	40-90	"
"46	26/01/30	11:34:46	68,4	A	40-90	"
"47	26/01/30	11:34:47	68,1	A	40-90	"
"48	26/01/30	11:34:48	68,9	A	40-90	"
"49	26/01/30	11:34:49	70,6	A	40-90	"
"50	26/01/30	11:34:50	68,9	A	40-90	"
"51	26/01/30	11:34:51	67	A	40-90	"
"52	26/01/30	11:34:52	68,7	A	40-90	"
"53	26/01/30	11:34:53	70,2	A	40-90	"
"54	26/01/30	11:34:54	68,7	A	40-90	"
"55	26/01/30	11:34:55	67,1	A	40-90	"
"56	26/01/30	11:34:56	65,9	A	40-90	"
"57	26/01/30	11:34:57	67,3	A	40-90	"
"58	26/01/30	11:34:58	67,1	A	40-90	"
"59	26/01/30	11:34:59	67,2	A	40-90	"
"60	26/01/30	11:35:00	68,3	A	40-90	"
"61	26/01/30	11:35:01	68,1	A	40-90	"
"62	26/01/30	11:35:02	66,6	A	40-90	"
"63	26/01/30	11:35:03	67,5	A	40-90	"
"64	26/01/30	11:35:04	70,6	A	40-90	"
"65	26/01/30	11:35:05	69,8	A	40-90	"
"66	26/01/30	11:35:06	68,2	A	40-90	"
"67	26/01/30	11:35:07	68,3	A	40-90	"
"68	26/01/30	11:35:08	66,2	A	40-90	"
"69	26/01/30	11:35:09	66,1	A	40-90	"
"70	26/01/30	11:35:10	67	A	40-90	"
"71	26/01/30	11:35:11	67,6	A	40-90	"
"72	26/01/30	11:35:12	67,1	A	40-90	"
"73	26/01/30	11:35:13	65,9	A	40-90	"
"74	26/01/30	11:35:14	66,1	A	40-90	"
"75	26/01/30	11:35:15	66,2	A	40-90	"
"76	26/01/30	11:35:16	69,3	A	40-90	"
"77	26/01/30	11:35:17	71,5	A	40-90	"
"78	26/01/30	11:35:18	69,2	A	40-90	"
"79	26/01/30	11:35:19	68,2	A	40-90	"
"80	26/01/30	11:35:20	69,4	A	40-90	"
"81	26/01/30	11:35:21	70,2	A	40-90	"
"82	26/01/30	11:35:22	69,8	A	40-90	"
"83	26/01/30	11:35:23	69	A	40-90	"
"84	26/01/30	11:35:24	67,9	A	40-90	"
"85	26/01/30	11:35:25	67,7	A	40-90	"




ING. JULIO C. BRIONES
 E. O. HIG. y SEG. en el TRABAJO
 R.L.C. MAC. 1946 - M.T. y S.S.
 Registro COPIT 28334

INGENIERIA BRIONES - SERVICIO DE MEDICIONES AMBIENTALES LABORALES

Frente de Obra : JOSE JOAQUIN DE ACUÑA 1100/1200 - (4700) CATAMARCA

Muestreo de Ruido Perimetral 30 de Enero de 2026

"86	26/01/30	11:35:26	68,2	A	40-90	"
"87	26/01/30	11:35:27	67,9	A	40-90	"
"88	26/01/30	11:35:28	67,8	A	40-90	"
"89	26/01/30	11:35:29	66,9	A	40-90	"
"90	26/01/30	11:35:30	66,3	A	40-90	"
"91	26/01/30	11:35:31	70,2	A	40-90	"
"92	26/01/30	11:35:32	68,7	A	40-90	"
"93	26/01/30	11:35:33	67,4	A	40-90	"
"94	26/01/30	11:35:34	68	A	40-90	"
"95	26/01/30	11:35:35	67,4	A	40-90	"
"96	26/01/30	11:35:36	69,4	A	40-90	"
"97	26/01/30	11:35:37	68,6	A	40-90	"
"98	26/01/30	11:35:38	68,4	A	40-90	"
"99	26/01/30	11:35:39	68,1	A	40-90	"
"100	26/01/30	11:35:40	68,9	A	40-90	"
"101	26/01/30	11:35:41	70,6	A	40-90	"
"102	26/01/30	11:35:42	68,9	A	40-90	"
"103	26/01/30	11:35:43	67	A	40-90	"
"104	26/01/30	11:35:44	68,7	A	40-90	"
"105	26/01/30	11:35:45	70,2	A	40-90	"
"106	26/01/30	11:35:46	67,7	A	40-90	"
"107	26/01/30	11:35:47	68,2	A	40-90	"
"108	26/01/30	11:35:48	67,9	A	40-90	"
"109	26/01/30	11:35:49	67,8	A	40-90	"
"110	26/01/30	11:35:50	66,9	A	40-90	"
"111	26/01/30	11:35:51	66,3	A	40-90	"
"112	26/01/30	11:35:52	70,2	A	40-90	"
"113	26/01/30	11:35:53	68,7	A	40-90	"
"114	26/01/30	11:35:54	67,4	A	40-90	"
"115	26/01/30	11:35:55	68	A	40-90	"
"116	26/01/30	11:35:56	67,4	A	40-90	"
"117	26/01/30	11:35:57	69,4	A	40-90	"
"118	26/01/30	11:35:58	68,6	A	40-90	"
"119	26/01/30	11:35:59	68,4	A	40-90	"
"120	26/01/30	11:36:00	68,6	A	40-90	"


ING. JULIO C. BRIONES
 E. INGENIERO y SEG. en el TRABAJO
 R.E.G. NAC. 1945 - M.T. y S.S.
 REGISTRO COPIT 28334

Frente de Obra : JOSE JOAQUIN DE ACUÑA 1100/1200 - (4700) CATAMARCA
 Muestreo de Ruido Perimetral 30 de Enero de 2026



LABORATORIO DE MEDICIONES
 ELECTRICAS Y ELECTRONICAS
 D.E.y C.



Universidad Nacional de Tucumán

"1985-2025 - 40 Aniversario del CIN"

CERTIFICADO DE CONTRASTE DE INSTRUMENTAL ELÉCTRICO

Objeto: **Sonómetro**
CEM DT- 8852
DATA LOGGER SOUND LEVEL METER
 Lectura en curvas de Escalas A ó C
 Div Dig 0,1 dB
 Respuesta Rápida (F) / Lenta (S)
 Indicador de Sobrerrango
 Escalas dB (30 --- 80) (50 --- 100) (**80 --- 130 dB**)
 (30 --- 130) Ret. autom de MIN / MAX (HOLD)

Fabricante: **CEM**

Modelo: **DT – 8852**

Nº de serie: **S/N 240711859**

Determinaciones requeridas: Contraste


Fecha de calibración: 07 de Noviembre de 2025

Ciente: Briones Julio César
 Muñecas 772 10° C
 (4000) San Miguel de Tucumán

Metodología empleada:
 Comparación con Calibrador Clase 2 de acuerdo a procedimiento de contraste normal.

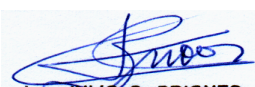
Hora	Escala A / C	Calibrador (dBA)	Escala A / C	Calibrador (dBA)
15:00	94,2 / 94,3	94,0	114,2 / 114,3	114,0
15:10	93,9 / 94,1		114,1 / 114,2	
15:20	94,1 / 94,2		114,2 / 114,1	

Calibrador de referencia:
 SOUND LEVEL CALIBRATOR Marca TES 1356 Serie 080104243
 ANSI S1.40 1984 IEC 60942: 2003 Class 2


 Ing. Sergio Gomez Blessing
 Profesor

Reg SBcsuudc

Avda. Independencia 1800 - C.P. 4000 - Tucumán - Argentina - Tel:+54 381 436-4093 - Fax:+54 381 436-4157


ING. JULIO C. BRIONES
 E. INGENIERO y SEG. en el TRABAJO
 R.E.C. NAC. 1945 - M.T. y S.S.
 REGISTRO COPIT 28334