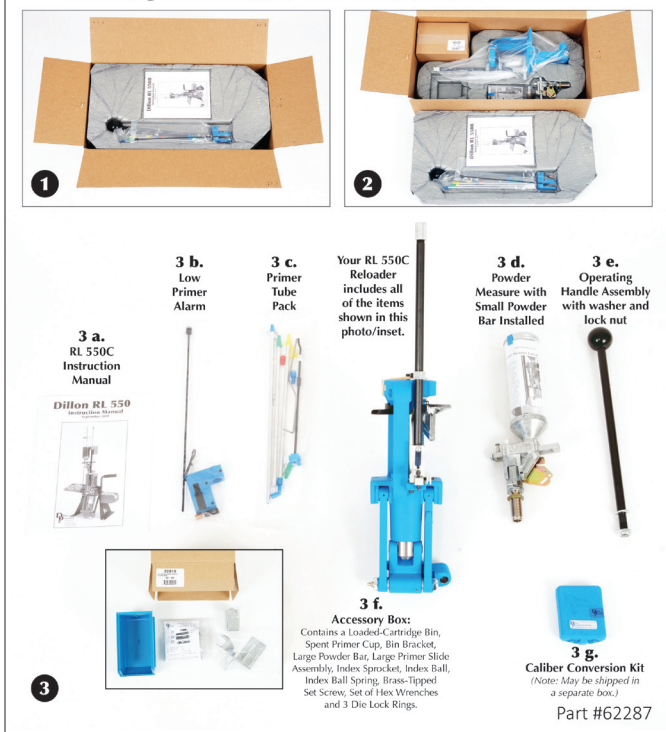


Dillon RL550C

Get Ready to RELOAD!

It's Easy to Assemble Your New RL 550C Reloader



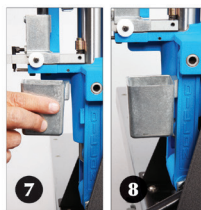
If you are mounting your RL 550C directly to your bench, use the mounting holes in the frame as a template. Use 1/4" diameter bolts (not included) to attach your machine to your bench. (Dillon offers a Universal Mounting Hardware Kit, stock # 14355.) Use washers on the top and bottom. Use a 5/16" drill (aka "drill bit") to drill the holes in your bench. Do not use wood screws to secure the machine to your bench. If you are using the RL 550C Strong Mount accessory, refer to the instructions that came with it. (Note: From this point on, we will be using an RL 550C Strong Mount for ease of photography.)



Remove the washer and lock nut from the handle assembly. Hold the washer over the hole in the right side of the crank and insert the handle. Start the lock nut on the handle with your fingers.



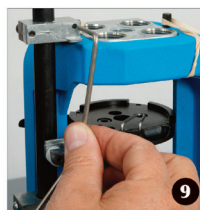
Place a 5/32" hex wrench or a screw driver through the hole in the handle to hold it while you tighten the lock nut using a 7/8" (or an adjustable) wrench.



Place the Spent Primer Cup onto the wedge-shaped mounting point on the Right Link Arm.

ATTENTION:
Now is the time to determine whether you must change your primer system before proceeding.

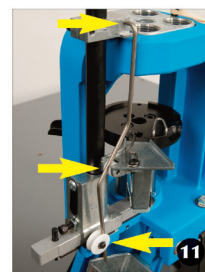
The RL 550C comes ready to dispense and seat small primers. If you're loading a caliber that requires large primers, skip forward to photo 45 for instructions on changing over to the large-primer system. All the necessary parts have been included with your RL 550C. (See item 3 f. in photo 3.)



Place the angled end of the primer system Operating Rod into the hole in the Operating Rod Bracket (top arrow, photo 11), then...



Pull the Operating Handle part way down and pull out on the Primer Slide. Align the Operating Rod so it runs between the small white roller on the Roller Bracket (middle arrow, photo 11) and the larger white roller on the Primer Slide (bottom arrow, photo 11).



By Andrea Bogard

Do you ever prime yourself for a task you know in your knower (Thanks, Dr. Suess!) is going to take every mental, emotional and strategic resource you have and it ends up barely scratching the surface of what you anticipated?

No? Just me then? Well, I want to tell you a story. Last year I tackled the trifecta of newly divorced womanhood:

1. I designed and built a gun closet with my very own tools (Super excited about my new Harbor Freight rewards account! It's the little things...).
2. I designed and constructed my own reloading bench in my third bedroom/office.
3. I put together, set up and made hundreds of fun seeds on my beautiful blue SL900.

I was feeling pretty solid about my budding mechanical skills. Being a gunwriter, I knew the time had come to tackle metallic loading. So, back to Dillon I went.

"There was what looked like a Quick Start Guide for a moderately complicated toaster in my hands. It was full color, brochure-like in structure and it said, 'Get Ready to Reload!'"

A note on why I went with this particular model: When I contacted Dillon looking for a recommendation, they asked about my end goals. Was I looking to get into large scale production? Did I want to load both pistol and rifle, or concentrate on one? Was I looking to do match

centric rifle loading or a balanced blend of target and hunting? After discussion, it was decided that the RL550C would be the best fit for my current usage goals.

I had a peculiar feeling of *déjà vu* as the Fed Ex guy watched me drag another set of boxes past my propped open screen door. These boxes were smaller and more manageable, but there was still a niggling sense of dread....

I vacuumed around them on the floor of my office for a solid two weeks. Each time I gave my-

self "the talk" about how I had to put it together. It went something like this:

"Hey Andi, you got this. You put together your