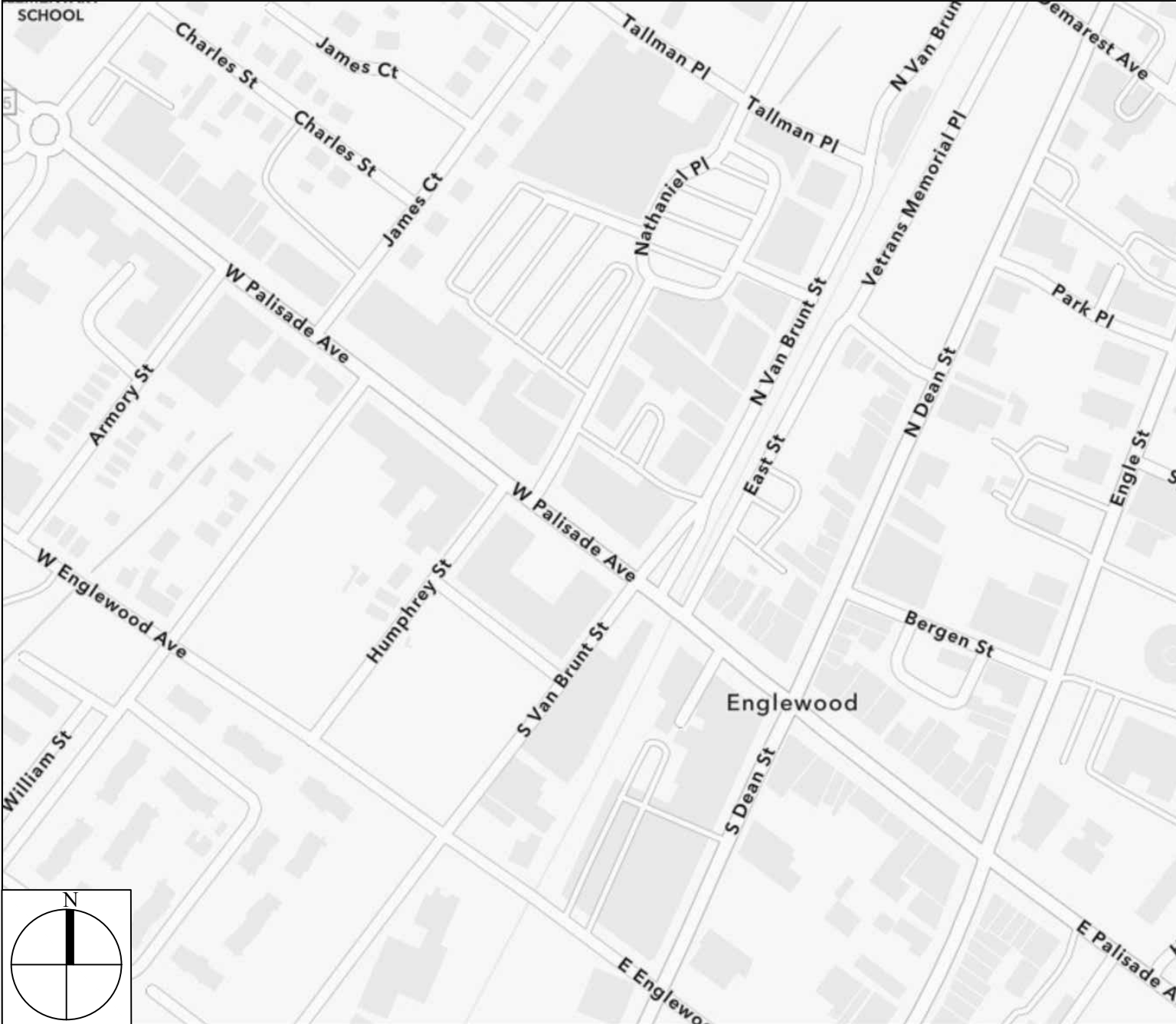


SITE LOCATION MAP



ENGLEWOOD, NJ

PLANS FOR:

STREETSCAPE IMPROVEMENTS
FOR
THE SPECIAL IMPROVEMENT DISTRICT
OF
ENGLEWOOD, NEW JERSEY

BOARD MEMBERS

- Albert Krull
Lori DeSimone-Ramil
Adam Brown
Ken Rosenzweig
- Linda Dunham
Max Bittan
Andrew Tronick

L-O

Cover Page

ENGLEWOOD, NJ STREETSCAPE IMPROVMENT



Imbiano Quigley
Landscape Architects
31 Mamaroneck Ave
White Plains, New York 10601
admin@iqlandarch.com
(914) 232-0200

Scale 1" = 300'-0"	
Date JUNE 26, 2024	
Drawn By ST	Checked By JAI

GENERAL NOTES:

- 1. ALL PLANTER LOCATIONS AS NOTED ON THE DRAWINGS ARE DIAGRAMMATIC. ALL PLANTER AND BENCH LOCATIONS SHALL BE MARKED OUT IN THE FIELD BY CONTRACTOR AND SHALL BE REVIEWED AND APPROVED BY THE LANDSCAPE ARCHITECT PRIOR TO PHYSICALLY SETTING PLANTERS.
- 2. WHERE A CLUSTER OF PLANTERS AND PLANTER BENCH COMBINATIONS ARE PROPOSED THE CONTRACTOR SHALL SET UP A TYPICAL PROTOTYPE CLUSTER INDICATING THE SPACING BETWEEN AND JUXTAPOSITION OF EACH PLANTER TO BE APPROVED BY THE LANDSCAPE ARCHITECT PRIOR TO BACKFILLING PLANTERS WITH SOIL.
- 3. IT IS THE CONTRACTORS RESPONSIBILITY FOR REMOVING (SALVAGING OR DISCARDING) EXISTING PLANTERS AND BENCHES THAT CONFLICT WITH THE LOCATIONS OF PROPOSED PLANTERS
- 4. CONTRACTOR SHALL NOTIFY LANDSCAPE ARCHITECT AT LEAST 48 HOURS BEFORE WORK IS SCHEDULED TO BEGIN.
- 5. CONTRACTOR SHALL BE RESPONSIBLE FOR DISPOSING OF ALL DEBRIS OFF-SITE IN A SAFE MANNER.
- 6. CONTRACTOR RESPONSIBLE FOR OBTAINING ALL PERMITS AND APPROVALS THAT MAY BE NECESSARY IN ORDER TO SECURE EXISTING PARKING SPACE AND OTHER AREAS ALONG PUBLIC STREET WHERE ACCESS IS NECESSARY FOR LOADING, MOBILIZATION AND CONSTRUCTION PURPOSES.
- 7. PROVIDE ADEQUATE MAINTENANCE AND PROTECTION OF BOTH VEHICULAR AN PEDESTRIAN TRAFFIC IN ORDER TO NOT DISRUPT THE OPERATION OF ADJACENT STORES, BUSINESSES AND RESIDENCE.

PLANTING NOTES:

- 1. REMOVE EXISTING SOIL WITHIN EACH TREE PIT WHERE A NEW TREE IS PROPOSED TO BE PLANTED. DISCARD OFF SITE
- 2. CONTRACTOR TO PROVIDE A SLOW RELEASE TREE WATERING BAG AT EACH TREE. TREE GATOR OR EQUAL. PROVIDE SAMPLE FOR LANDSCAPE ARCHITECTS APPROVAL.
- 3. ALL PLANTS SHALL BE SUBJECT TO THE LANDSCAPE ARCHITECT'S INSPECTION AND APPROVAL AT THE NURSERY AND AT THE SITE BEFORE ANY PLANTING WORK IS BEGUN.
- 4. ALL TREES TO BE BALLED AND BURLAPPED.
- 5. SIZED 2½"-3" CALIPER
- 6. BRANCHED HIGH 6'-7' FOR STREET TREE PLANTINGS
- 7. CONTRACTOR SHALL GUARANTEE ALL TREES FOR ONE YEAR FROM TIME OF LANDSCAPE ARCHITECT'S FINAL WRITTEN APPROVAL.

G-O

Project Scope

ENGLEWOOD, NJ STREETSCAPE IMPROVMENT

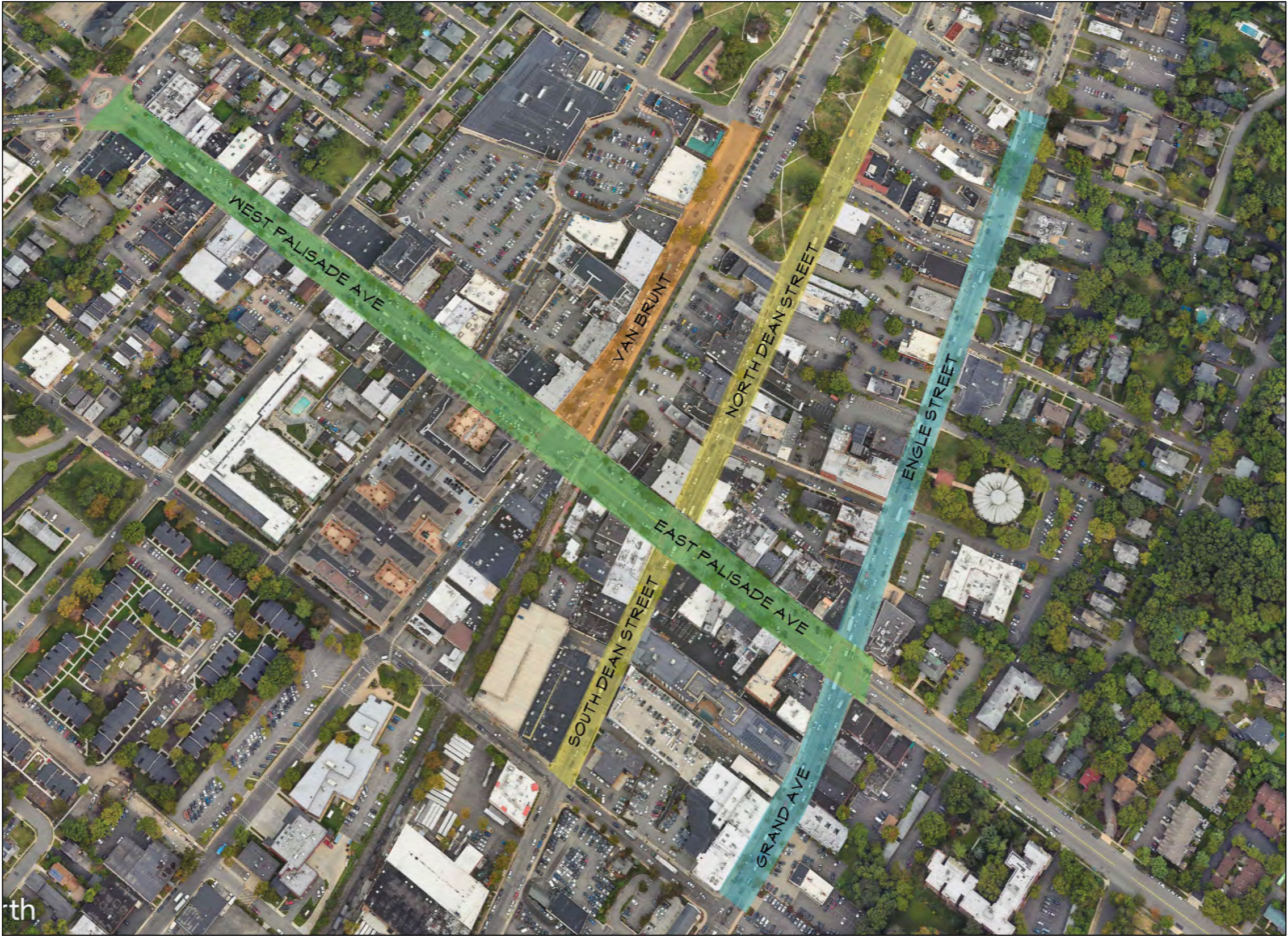


Imbiano Quigley
Landscape Architects
31 Mamaroneck Ave
White Plains, New York 10601
admin@iqlandarch.com
(914) 232-0200

Scale 1" = 200'-0"	
Date JUNE 26, 2024	
Drawn By ST	Checked By JAI

DRAWING LIST

SHEET	TITLE
L-0	COVER PAGE
L-1	PROJECT SCOPE
L-2	E. Palisade Ave. X Engle St. and Grand Ave.
L-3	E. Palisade Ave. X North Dean St. and South Dean St.
L-4	E. Palisade Ave. X Van Brunt St.
L-5	W. Palisade Ave. X Nathaniel Pl. and Humphrey St.
L-6	W. Palisade Ave. X William St. and James St.
L-7	W. Palisade Ave. X James St. and Armory St.
L-8	W. Palisade Ave. X Bennett Road and Tenaflly Road
L-9	Engle St. x Demarest Ave.
L-10	Engle St. X Park Pl.
L-11	Engle St. X Spring Ln.
L-12	Engle St. X Bergen St.
L-13	Engle St. X E. Palisade Ave and Bergen St.
L-14	Grand Ave. X E. Palisade Ave.
L-15	North Dean St. X Demarest Ave.
L-16	North Dean St. X Park Pl.
L-17	North Dean St. X Bergen St.
L-18	South Dean St. X E. Palisade Ave
L-19	South Dean St. X Englewood Ave.
L-20	North Van Brunt St. X Tallman Pl.
L-21	North Van Brunt St. X Daisy Pl.
L-22	North Van Brunt St. X Palisade Ave.



L- 1

Project Limits

ENGLEWOOD, NJ STREETSCAPE IMPROVMENT

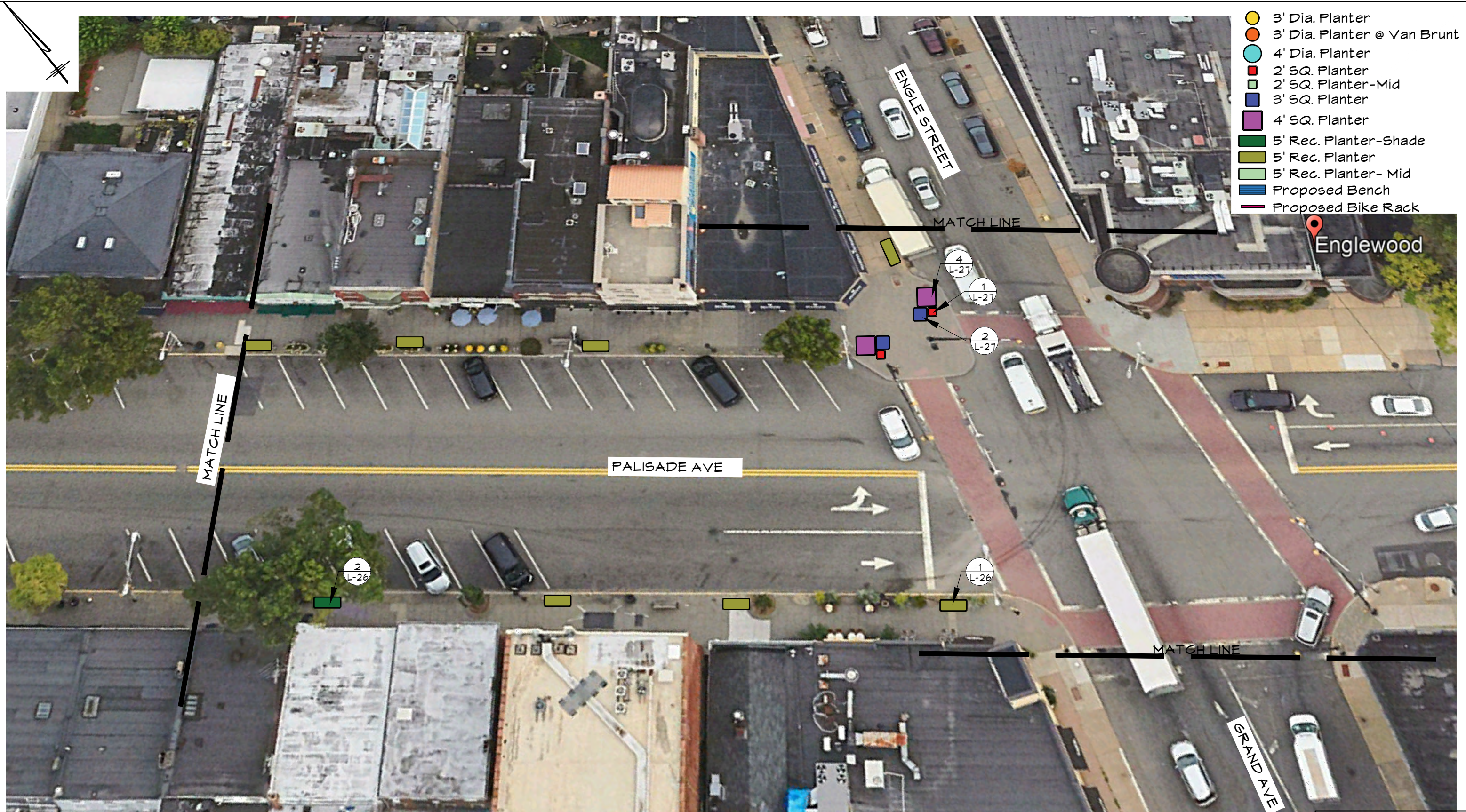
IQ

Imbiano •Quigley
Landscape Architects
31 Mamaroneck Ave
White Plains, New York 10601
admin@iqlandarch.com
(914) 232-0200

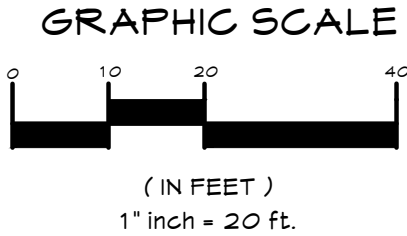
Scale
1" = 200'-0"

Date
JUNE 26, 2024

Drawn By	Checked By
ST	JAI

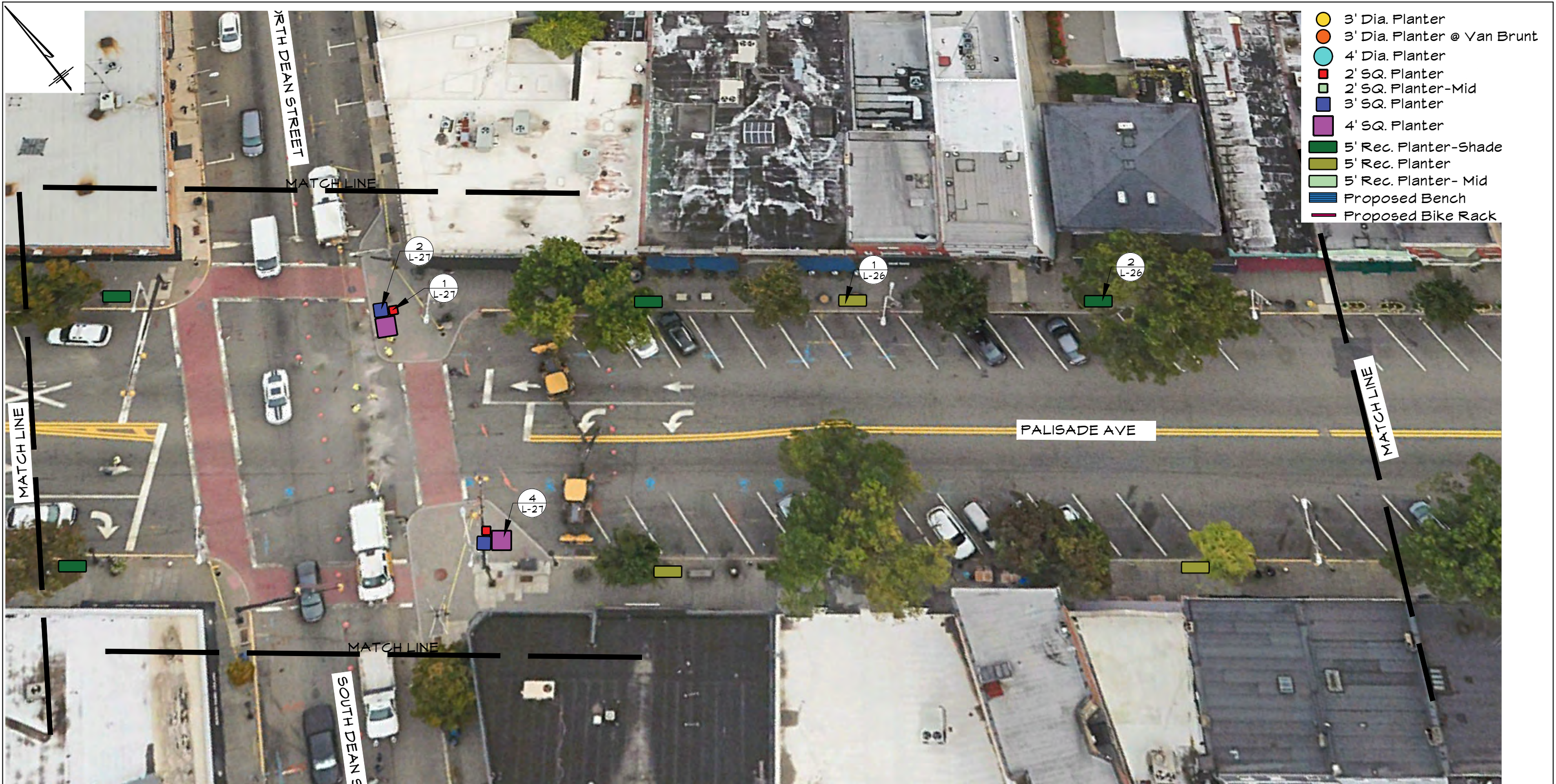


L-2	E. Palisade Ave. X Engle St. and Grand Ave.
ENGLEWOOD, NJ STREETSCAPE IMPROVMENT	



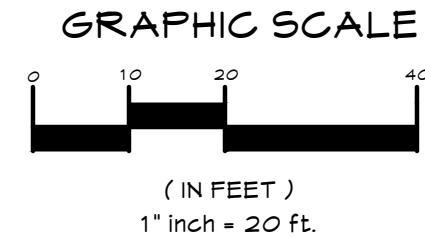
IQ
 Imbiano •Quigley
 Landscape Architects
 31 Mamaroneck Ave
 White Plains, New York 10601
 admin@iqlandarch.com
 (914) 232-0200

Scale 1" = 20'-0"	Date JUNE 26, 2024
Drawn By ST	Checked By JAI



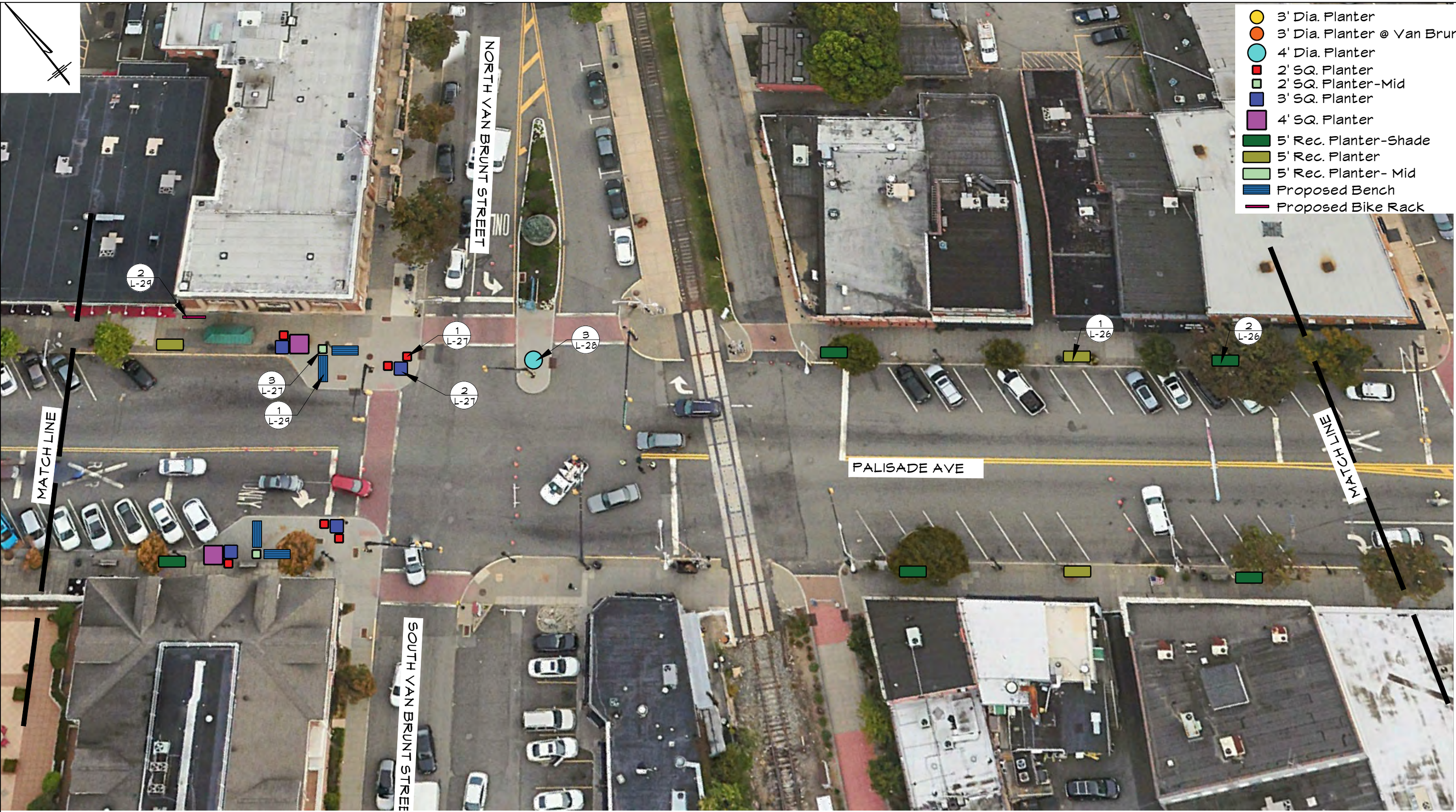
- 3' Dia. Planter
- 3' Dia. Planter @ Van Brunt
- 4' Dia. Planter
- 2' SQ. Planter
- 2' SQ. Planter-Mid
- 3' SQ. Planter
- 4' SQ. Planter
- 5' Rec. Planter-Shade
- 5' Rec. Planter
- 5' Rec. Planter- Mid
- Proposed Bench
- Proposed Bike Rack

L-3	E. Palisade X N. Dean St. and S. Dean St.
ENGLEWOOD, NJ STREETSCAPE IMPROVMENT	



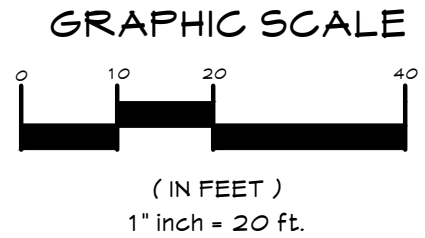
IQ
 Imbiano •Quigley
 Landscape Architects
 31 Mamaroneck Ave
 White Plains, New York 10601
 admin@iqlandarch.com
 (914) 232-0200

Scale 1" = 20'-0"	
Date JUNE 26, 2024	
Drawn By ST	Checked By JAI



- 3' Dia. Planter
- 3' Dia. Planter @ Van Brunt
- 4' Dia. Planter
- 2' SQ. Planter
- 2' SQ. Planter-Mid
- 3' SQ. Planter
- 4' SQ. Planter
- 5' Rec. Planter-Shade
- 5' Rec. Planter
- 5' Rec. Planter- Mid
- Proposed Bench
- Proposed Bike Rack

L-4	E. Palisade Ave. X Van Brunt St.
ENGLEWOOD, NJ STREETSCAPE IMPROVMENT	



IQ
Imbiano •Quigley
Landscape Architects
31 Mamaroneck Ave
White Plains, New York 10601
admin@iqlandarch.com
(914) 232-0200

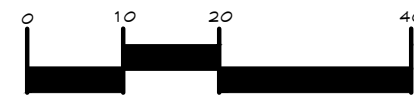
Scale 1" = 20'-0"	
Date JUNE 26, 2024	
Drawn By ST	Checked By JAI



L-5 W. Palisade Ave. X Nathaniel Pl and Humphryey St.

ENGLEWOOD, NJ STREETSCAPE IMPROVMENT

GRAPHIC SCALE



(IN FEET)
1" inch = 20 ft.

IQ

Imbiano •Quigley
Landscape Architects

31 Mamaroneck Ave
White Plains, New York 10601
admin@iqlandarch.com
(914) 232-0200

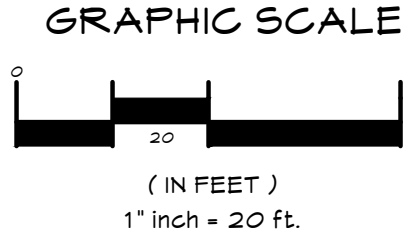
Scale
1" = 20'-0"

Date
JUNE 26, 2024

Drawn By	Checked By
ST	JAI

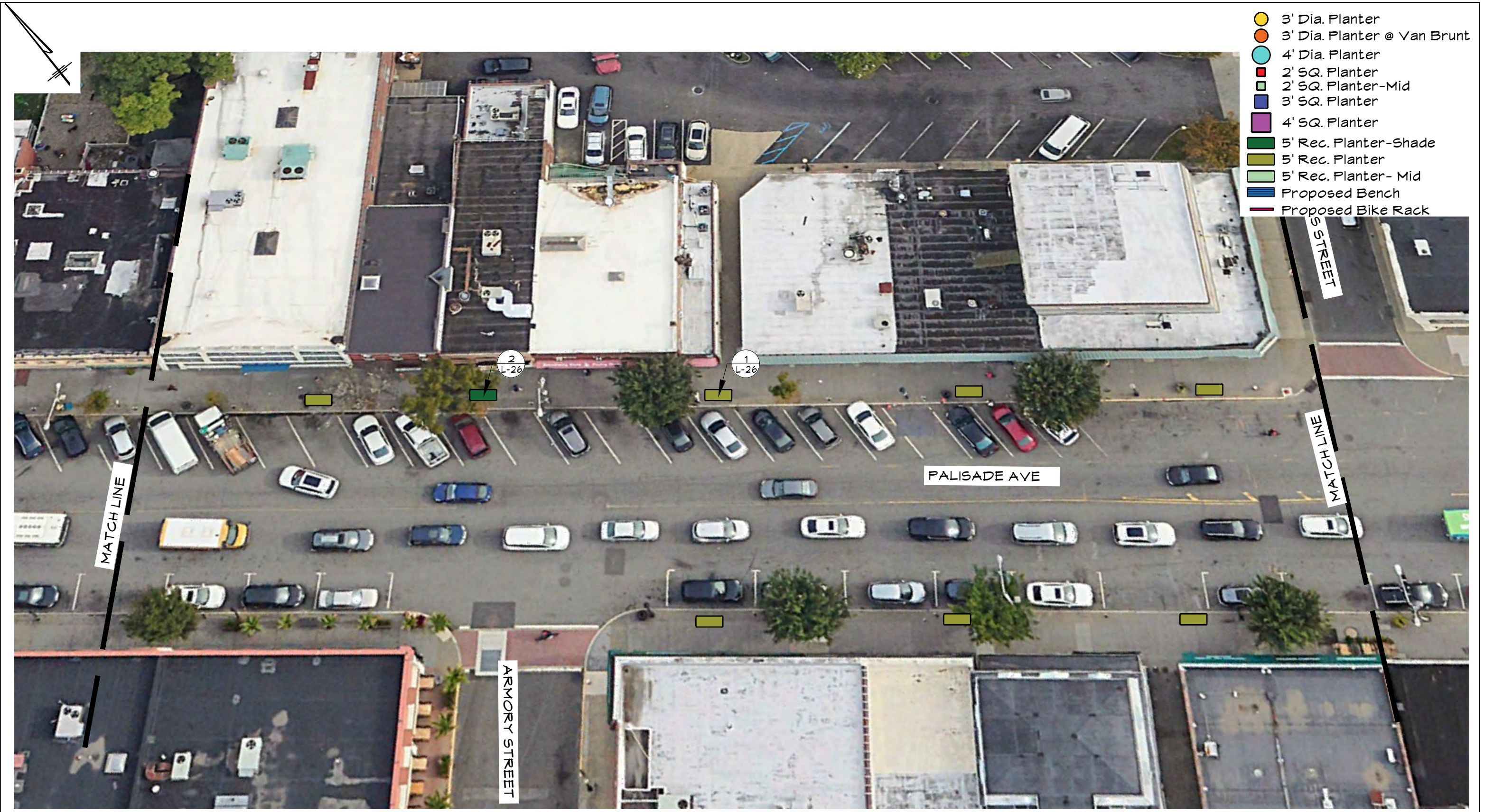


L-6	W. Palisade Ave. X William St. and James St.
ENGLEWOOD, NJ STREETSCAPE IMPROVMENT	

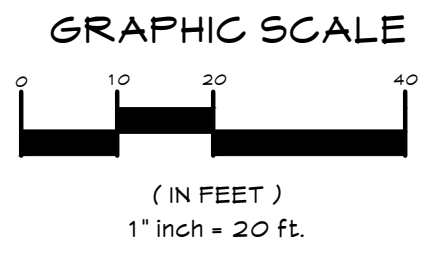


IQ
Imbiano •Quigley
Landscape Architects
31 Mamaroneck Ave
White Plains, New York 10601
admin@iqlandarch.com
(914) 232-0200

Scale 1" = 20'-0"	
Date JUNE 26, 2024	
Drawn By ST	Checked By JAI

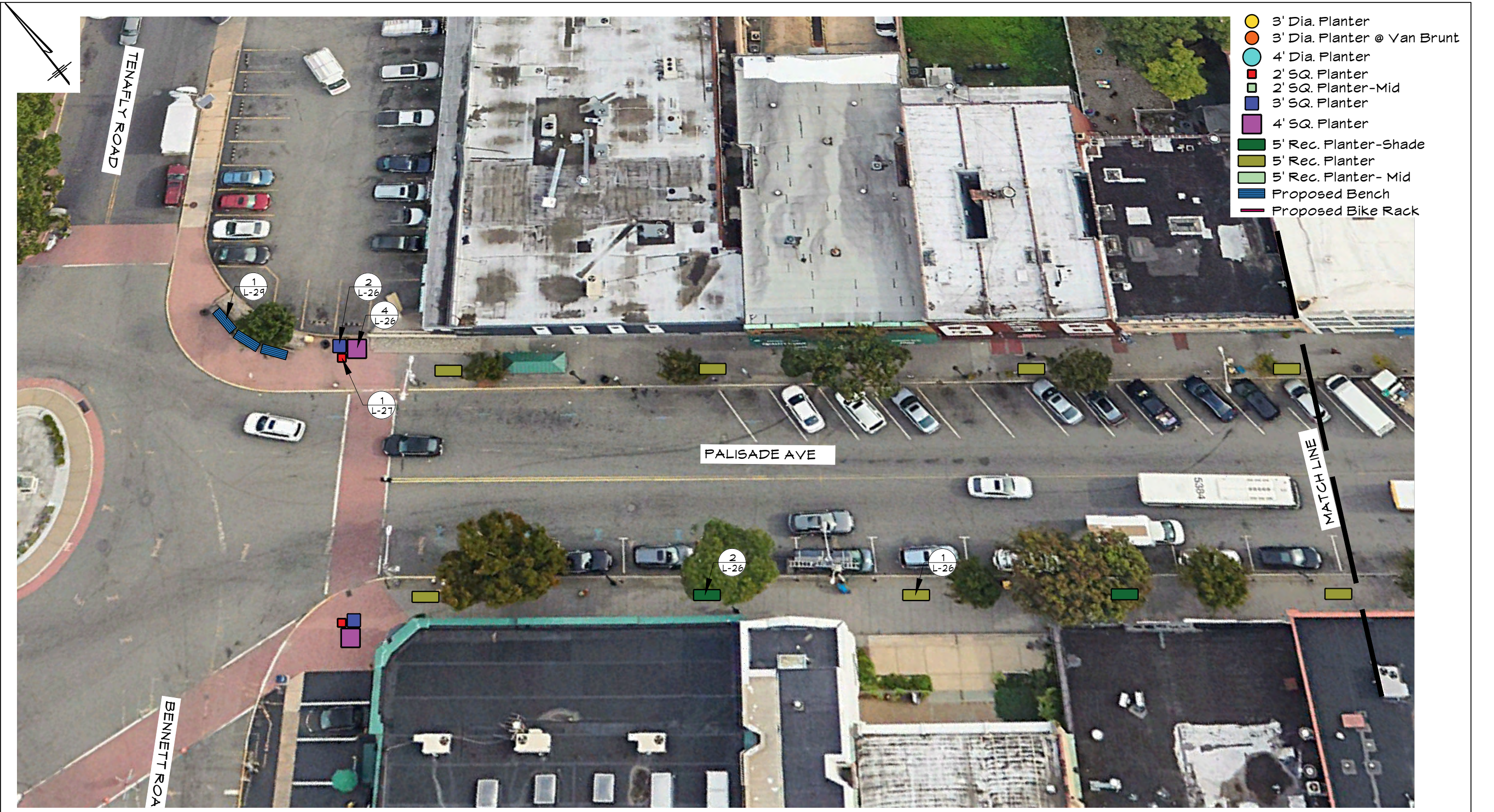


L-7	W. Palisade Ave. X James St. and Armory St.
ENGLEWOOD, NJ STREETSCAPE IMPROVMENT	

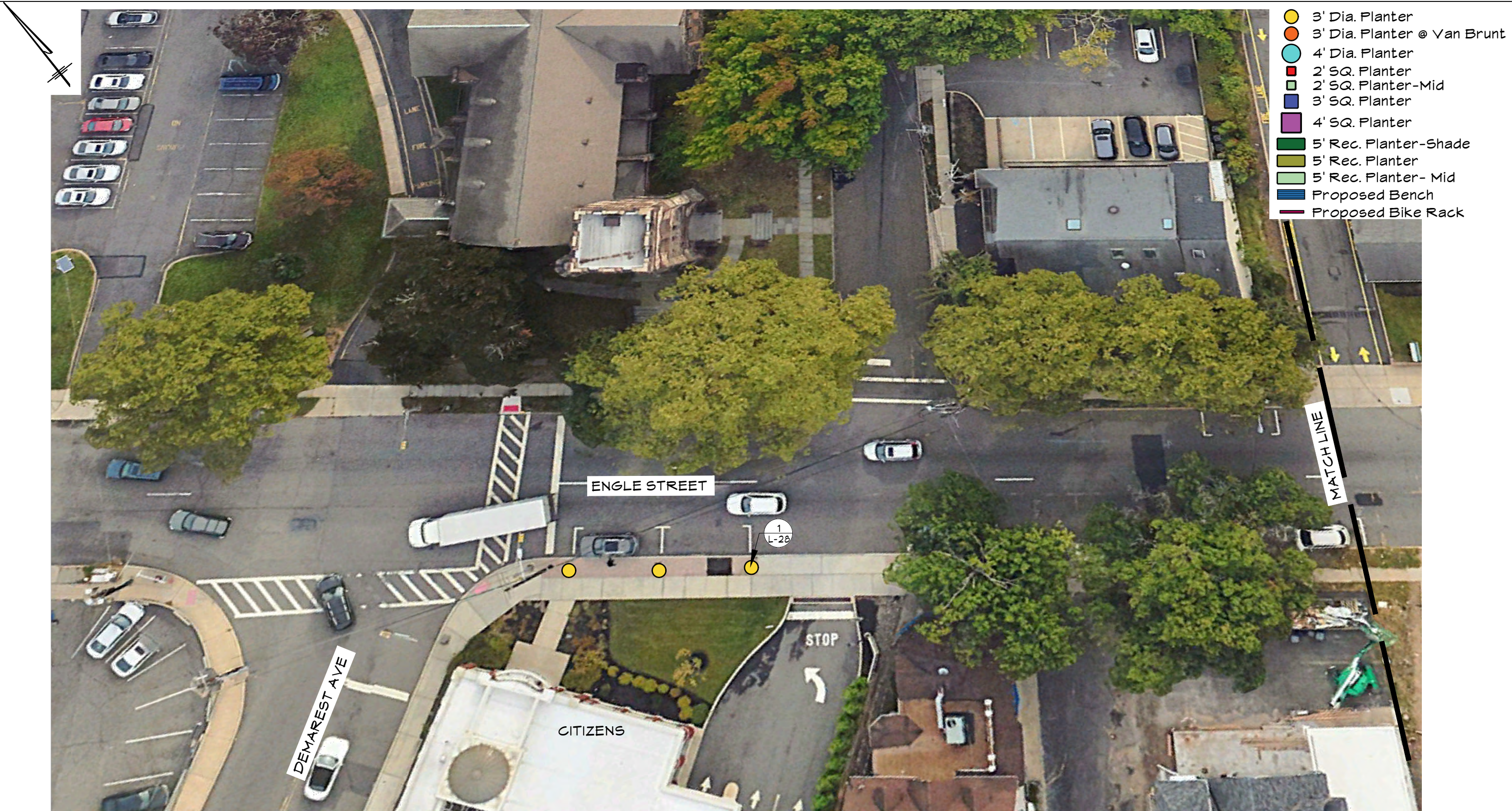


IQ
Imbiano •Quigley
Landscape Architects
31 Mamaroneck Ave
White Plains, New York 10601
admin@iqlandarch.com
(914) 232-0200

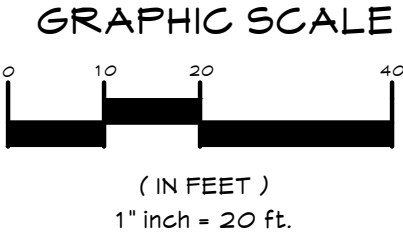
Scale 1" = 20'-0"	
Date JUNE 26, 2024	
Drawn By ST	Checked By JAI



L- 1	W. Palisade Ave. X Bennett Rd. and Tenaflly Rd.	<p>GRAPHIC SCALE</p> <p>0 10 20 40</p> <p>(IN FEET)</p> <p>1" inch = 20 ft.</p>	<p>IQ</p> <p>Imbiano •Quigley</p> <p>Landscape Architects</p> <p>31 Mamaroneck Ave</p> <p>White Plains, New York 10601</p> <p>admin@iqlandarch.com</p> <p>(914) 232-0200</p>	Scale 1" = 20'-0"	
				Date JUNE 26, 2024	
				Drawn By ST	Checked By JAI



L-9	Engle St. X Demarest Ave.
ENGLEWOOD, NJ STREETSCAPE IMPROVMENT	



IQ
Imbiano -Quigley
Landscape Architects
31 Mamaroneck Ave
White Plains, New York 10601
admin@iqlandarch.com
(914) 232-0200

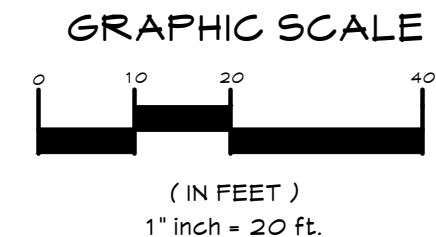
Scale 1" = 20'-0"	
Date JUNE 26, 2024	
Drawn By ST	Checked By JAI



- 3' Dia. Planter
- 3' Dia. Planter @ Van Brunt
- 4' Dia. Planter
- 2' SQ. Planter
- 2' SQ. Planter-Mid
- 3' SQ. Planter
- 4' SQ. Planter
- 5' Rec. Planter-Shade
- 5' Rec. Planter
- 5' Rec. Planter- Mid
- ▬ Proposed Bench
- ▬ Proposed Bike Rack
- + New Tree Replacement Tree

- Planting Notes:**
1. All Trees to be balled and burlapped.
 2. Sized 2 1/2"-3" Caliper
 3. Branched High 6'-7' for Street Tree Plantings
 4. Contractor to provide a slow release tree watering bag at each tree.
 5. Contractor to excavate, remove all existing soils within tree pits and discard off site.
 6. Tree List on L-25

L-10	Engle St. X Park Pl.
ENGLEWOOD, NJ STREETSCAPE IMPROVMENT	



IQ

Imbiano -Quigley
Landscape Architects

31 Mamaroneck Ave
White Plains, New York 10601
admin@iqlandarch.com
(914) 232-0200

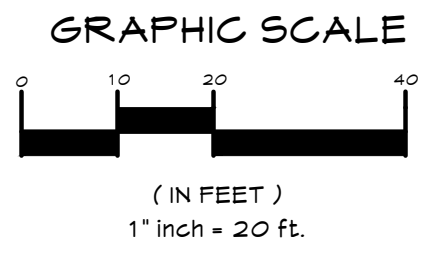
Scale 1" = 20'-0"	
Date JUNE 26, 2024	
Drawn By ST	Checked By JAI



- 3' Dia. Planter
- 3' Dia. Planter @ Van Brunt
- 4' Dia. Planter
- 2' SQ. Planter
- 2' SQ. Planter-Mid
- 3' SQ. Planter
- 4' SQ. Planter
- 5' Rec. Planter-Shade
- 5' Rec. Planter
- 5' Rec. Planter- Mid
- ▨ Proposed Bench
- ▨ Proposed Bike Rack
- + New Tree Replacement Tree

- Planting Notes:**
1. All Trees to be balled and burlapped.
 2. Sized 2 1/2"-3" Caliper
 3. Branched High 6'-7' for Street Tree Plantings
 4. Contractor to provide a slow release tree watering bag at each tree.
 5. Contractor to excavate, remove all existing soils within tree pits and discard off site.
 6. Tree List on L-25

L- 1 1	Engle St. and Spring Ln.
ENGLEWOOD, NJ STREETSCAPE IMPROVMENT	

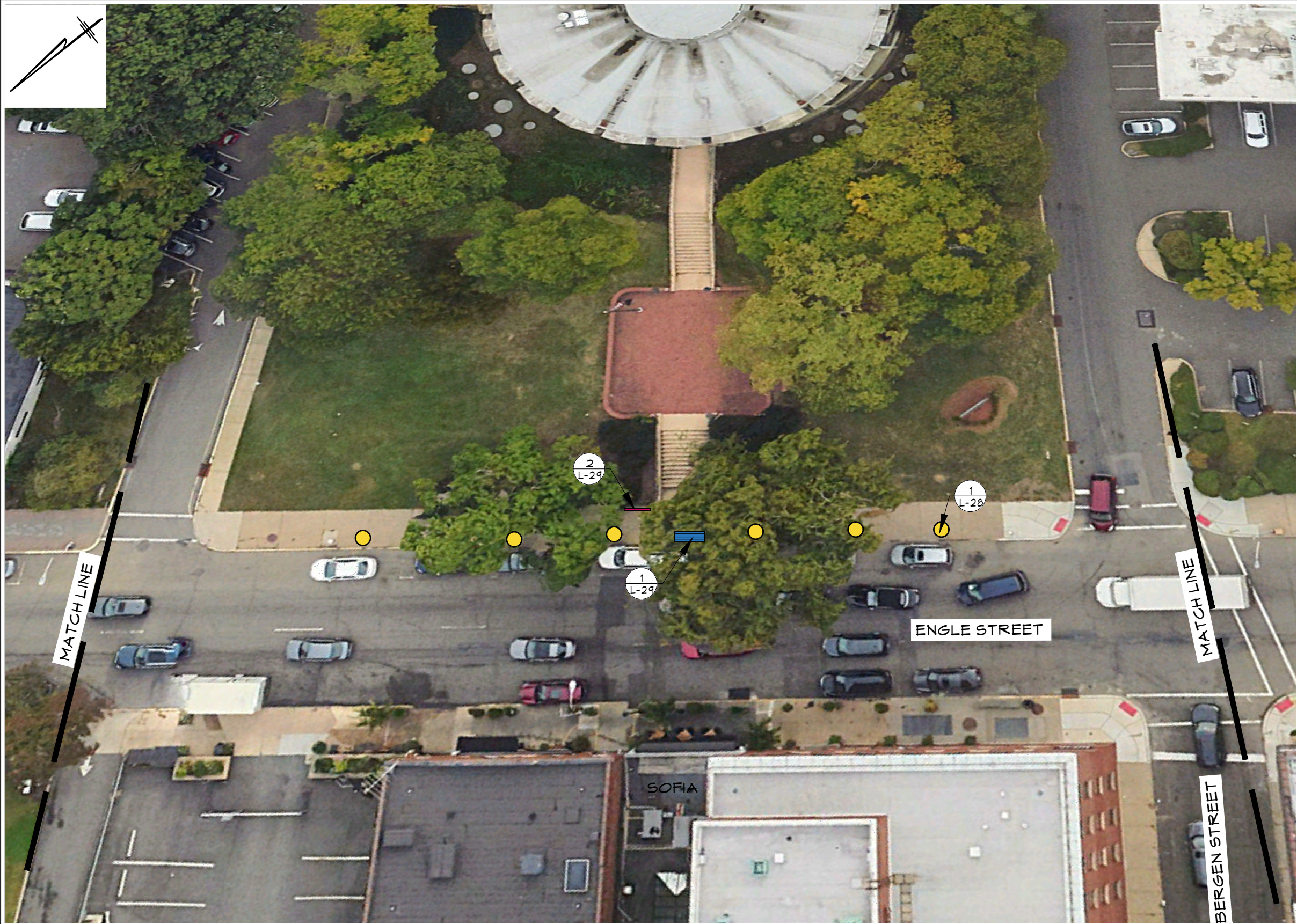


IQ

Imbiano •Quigley
Landscape Architects

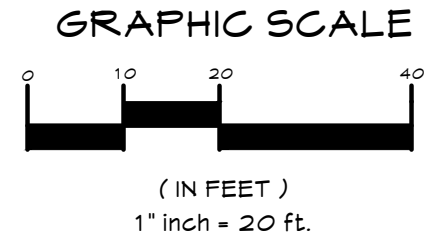
31 Mamaroneck Ave
White Plains, New York 10601
admin@iqlandarch.com
(914) 232-0200


Scale 1" = 20'-0"	
Date JUNE 26, 2024	
Drawn By ST	Checked By JAI

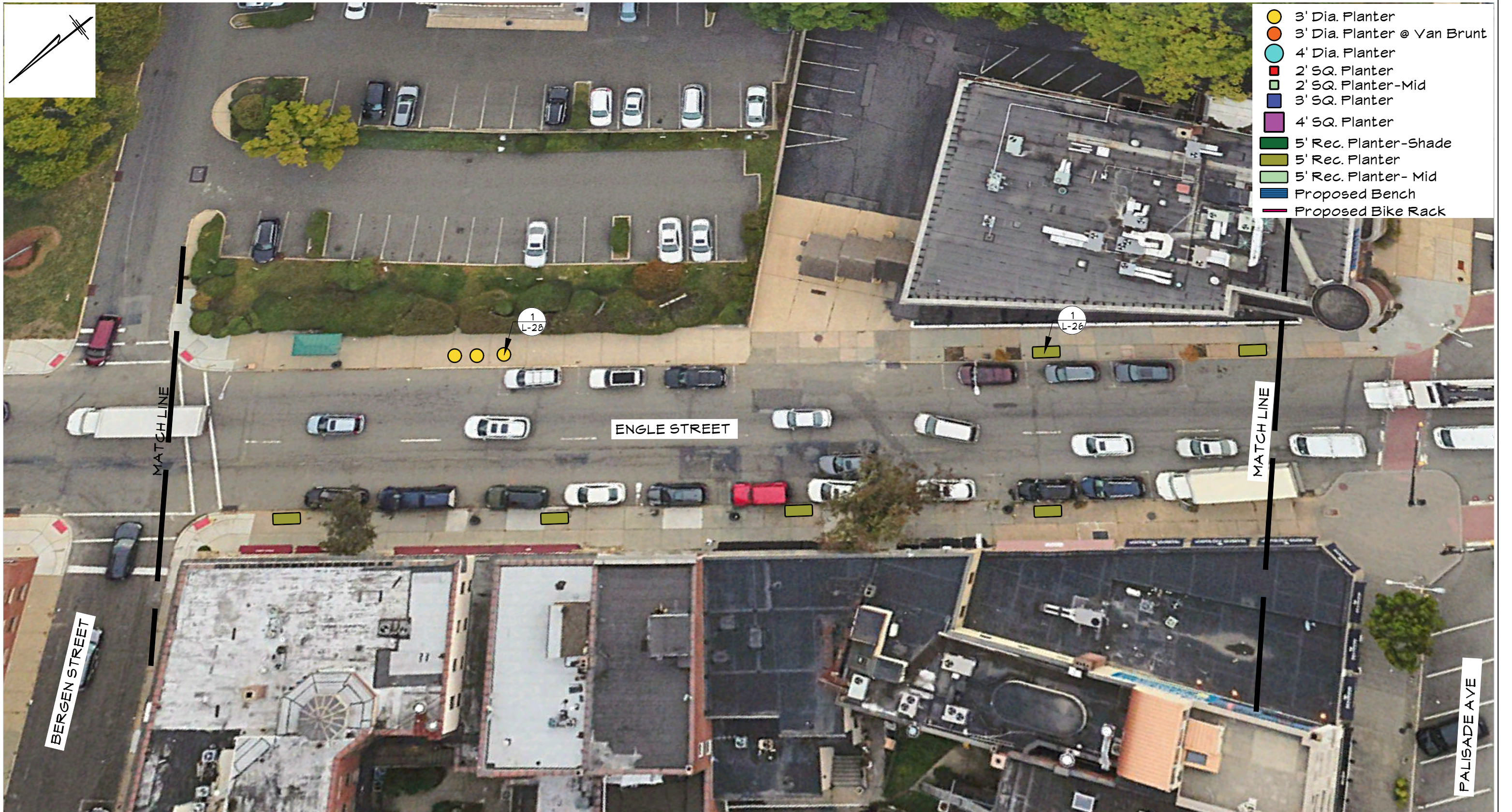


- 3' Dia. Planter
- 3' Dia. Planter @ Van Brunt
- 4' Dia. Planter
- 2' SQ. Planter
- 2' SQ. Planter-Mid
- 3' SQ. Planter
- 4' SQ. Planter
- 5' Rec. Planter-Shade
- 5' Rec. Planter
- 5' Rec. Planter- Mid
- Proposed Bench
- Proposed Bike Rack

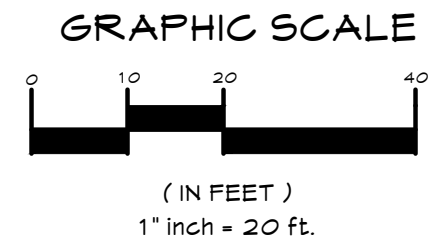
L- 1 2	Engle St. X Bergen St.
ENGLEWOOD, NJ STREETSCAPE IMPROVMENT	



 Imbiano •Quigley Landscape Architects 31 Mamaroneck Ave White Plains, New York 10601 admin@iqlandarch.com (914) 232-0200	
Scale 1" = 20'-0"	Date JUNE 26, 2024
Drawn By ST	Checked By JAI



L- 13	Engle St. X E. Palisade and Bergen St.
ENGLEWOOD, NJ STREETSCAPE IMPROVMENT	

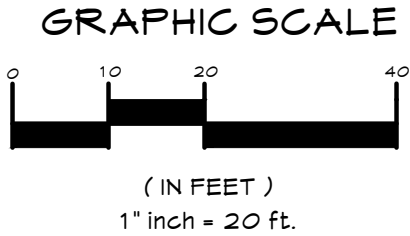


IQ
 Imbiano •Quigley
 Landscape Architects
 31 Mamaroneck Ave
 White Plains, New York 10601
 admin@iqlandarch.com
 (914) 232-0200

Scale 1" = 20'-0"	Date JUNE 26, 2024
Drawn By ST	Checked By JAI



L- 14	Grand Ave. X E Palisade Ave.
ENGLEWOOD, NJ STREETSCAPE IMPROVMENT	

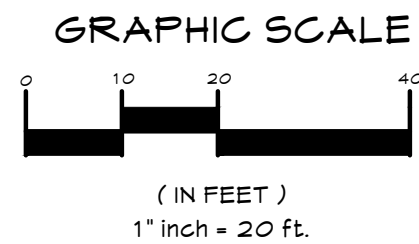


IQ
 Imbiano ·Quigley
 Landscape Architects
 31 Mamaroneck Ave
 White Plains, New York 10601
 admin@iqlandarch.com
 (914) 232-0200

Scale 1" = 20'-0"	
Date JUNE 26, 2024	
Drawn By ST	Checked By JAI



L-15	N. Dean St. X Demarest Ave.
ENGLEWOOD, NJ STREETSCAPE IMPROVMENT	



IQ

Imbiano •Quigley
Landscape Architects

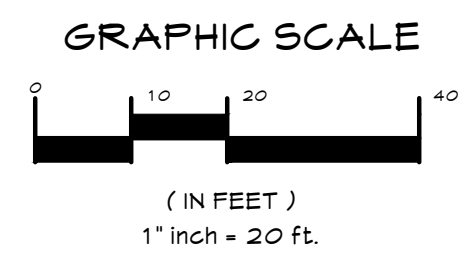
31 Mamaroneck Ave
White Plains, New York 10601
admin@iqlandarch.com
(914) 232-0200

Scale 1" = 20'-0"	Date JUNE 26, 2024
Drawn By ST	Checked By JAI



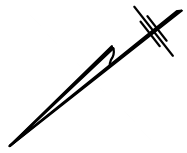
- 3' Dia. Planter
- 3' Dia. Planter @ Van Brunt
- 4' Dia. Planter
- 2' SQ. Planter
- 2' SQ. Planter-Mid
- 3' SQ. Planter
- 4' SQ. Planter
- 5' Rec. Planter-Shade
- 5' Rec. Planter
- 5' Rec. Planter- Mid
- Proposed Bench
- Proposed Bike Rack

L-16	N. Dean St. X Park Pl.
ENGLEWOOD, NJ STREETSCAPE IMPROVMENT	



IQ
Imbiano •Quigley
Landscape Architects
31 Mamaroneck Ave
White Plains, New York 10601
admin@iqlandarch.com
(914) 232-0200

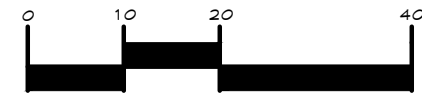
Scale 1" = 20'-0"	
Date JUNE 26, 2024	
Drawn By ST	Checked By JAI



L-17 N. Dean X Bergen St.

ENGLEWOOD, NJ STREETSCAPE IMPROVMENT

GRAPHIC SCALE



(IN FEET)
1" inch = 20 ft.

IQ

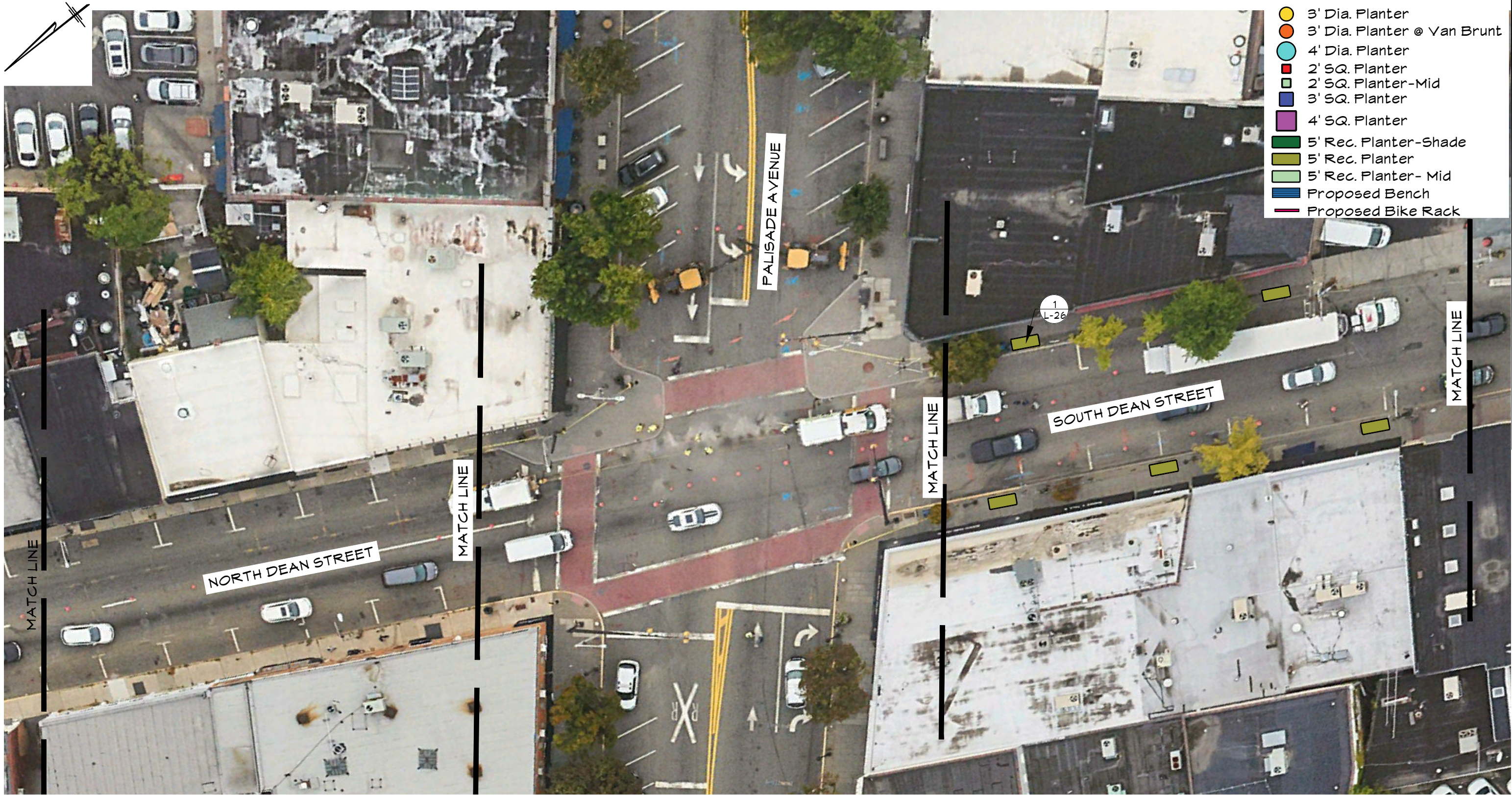
Imbiano Quigley
Landscape Architects

31 Mamaroneck Ave
White Plains, New York 10601
admin@iqlandarch.com
(914) 232-0200

Scale
1" = 20'-0"

Date
JUNE 26, 2024

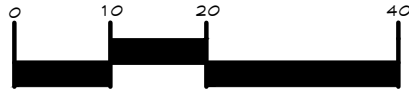
Drawn By	Checked By
ST	JAI



L-18 Dean St. X E. Palisade Ave.

ENGLEWOOD, NJ STREETSCAPE IMPROVMENT

GRAPHIC SCALE



(IN FEET)
1" inch = 20 ft.

IQ

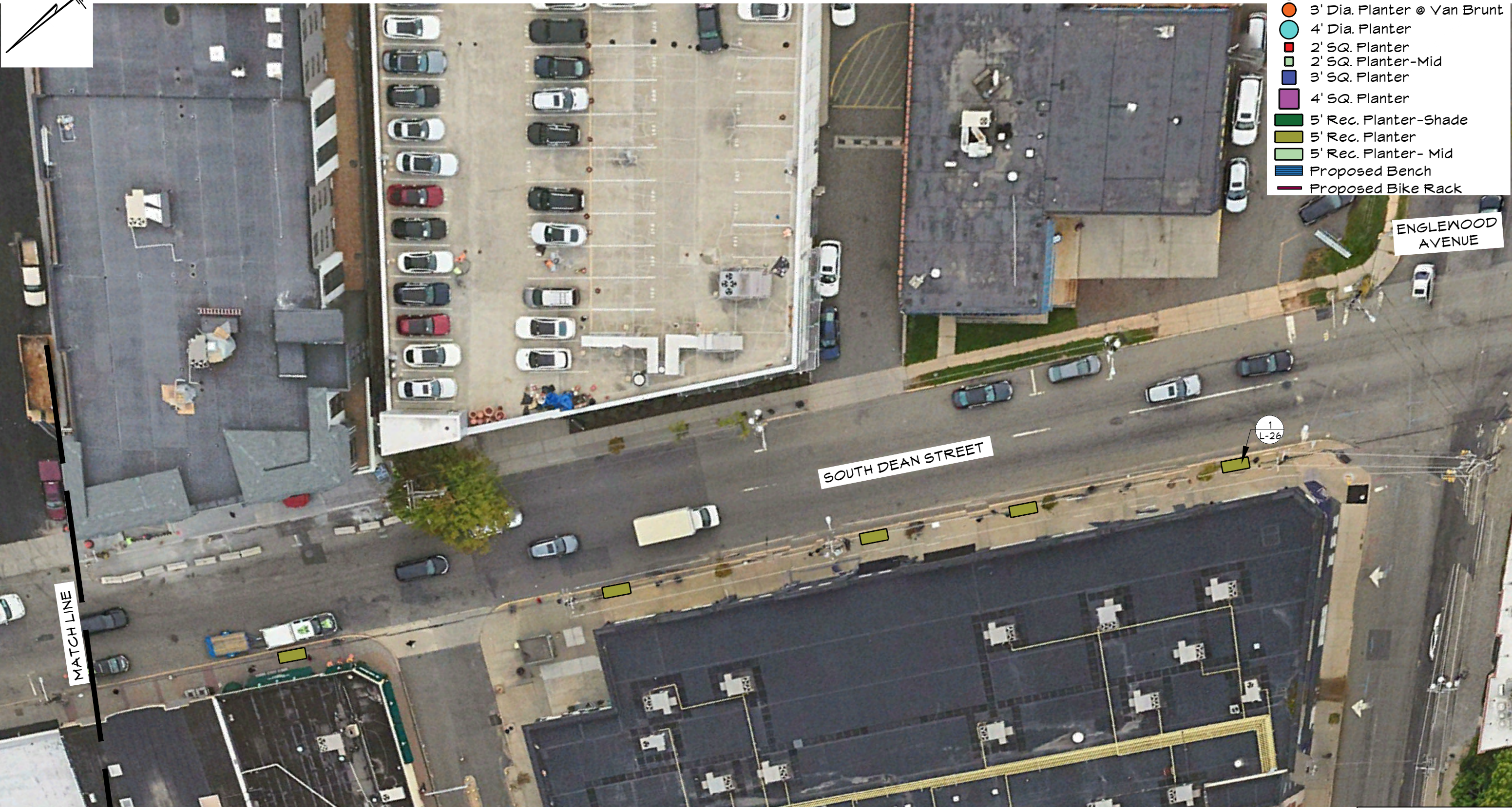
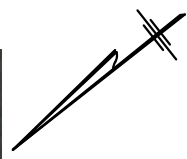
Imbiano • Quigley
Landscape Architects

31 Mamaroneck Ave
White Plains, New York 10601
admin@iqlandarch.com
(914) 232-0200

Scale
1" = 20'-0"

Date
JUNE 26, 2024

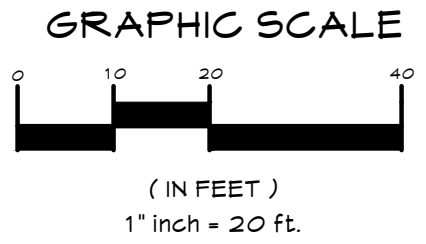
Drawn By	Checked By
ST	JAI



- 3' Dia. Planter
- 3' Dia. Planter @ Van Brunt
- 4' Dia. Planter
- 2' SQ. Planter
- 2' SQ. Planter-Mid
- 3' SQ. Planter
- 4' SQ. Planter
- 5' Rec. Planter-Shade
- 5' Rec. Planter
- 5' Rec. Planter- Mid
- Proposed Bench
- Proposed Bike Rack

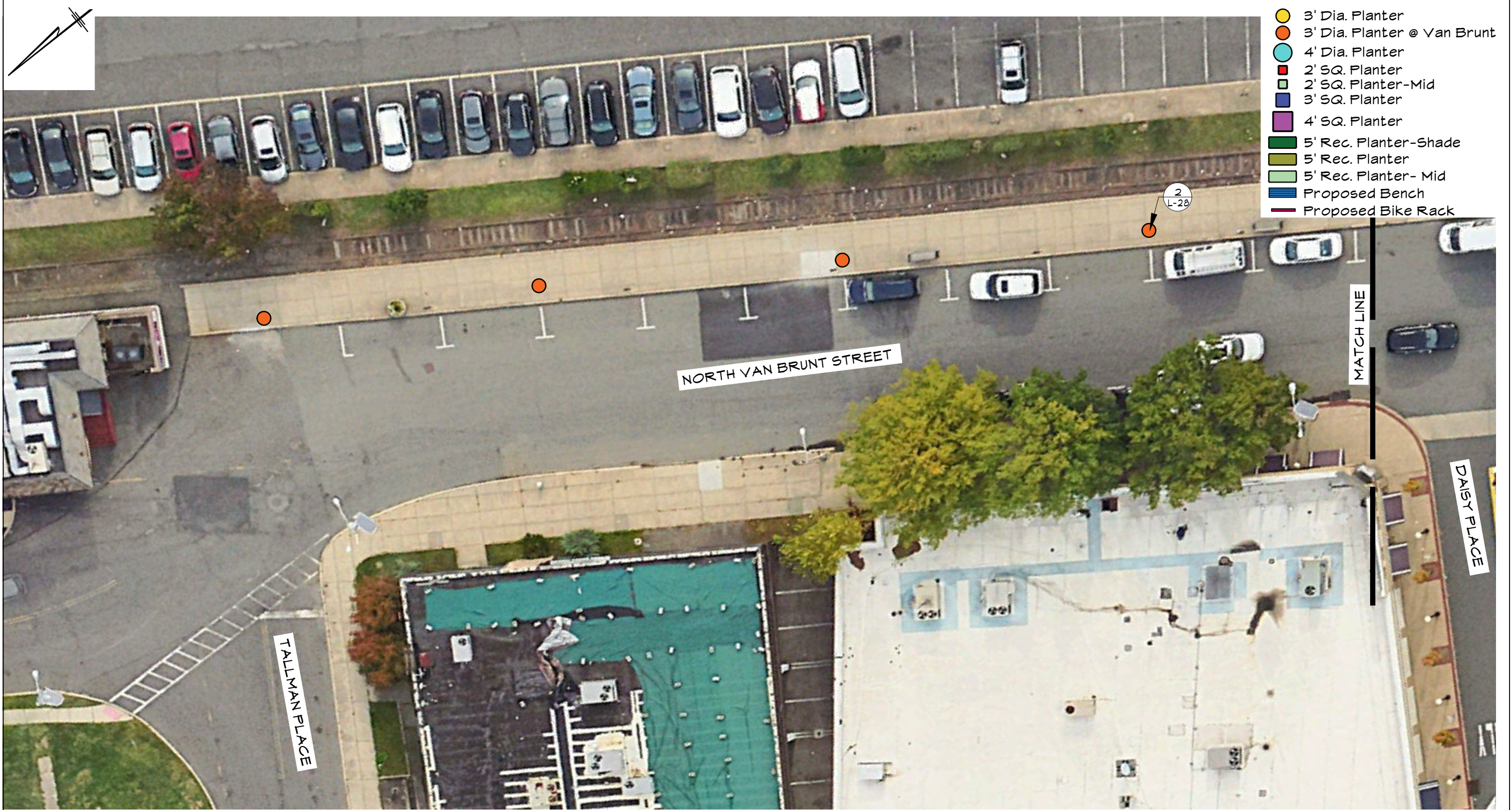
L- 19 S. Dean St. X Englewood Ave.

ENGLEWOOD, NJ STREETSCAPE IMPROVMENT

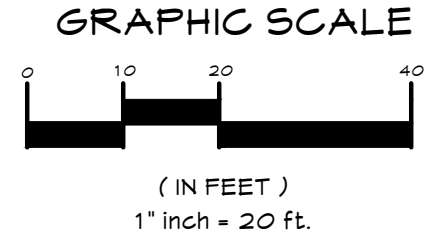


IQ
Imbiano •Quigley
Landscape Architects
31 Mamaroneck Ave
White Plains, New York 10601
admin@iqlandarch.com
(914) 232-0200

Scale 1" = 20'-0"	
Date JUNE 26, 2024	
Drawn By ST	Checked By JAI

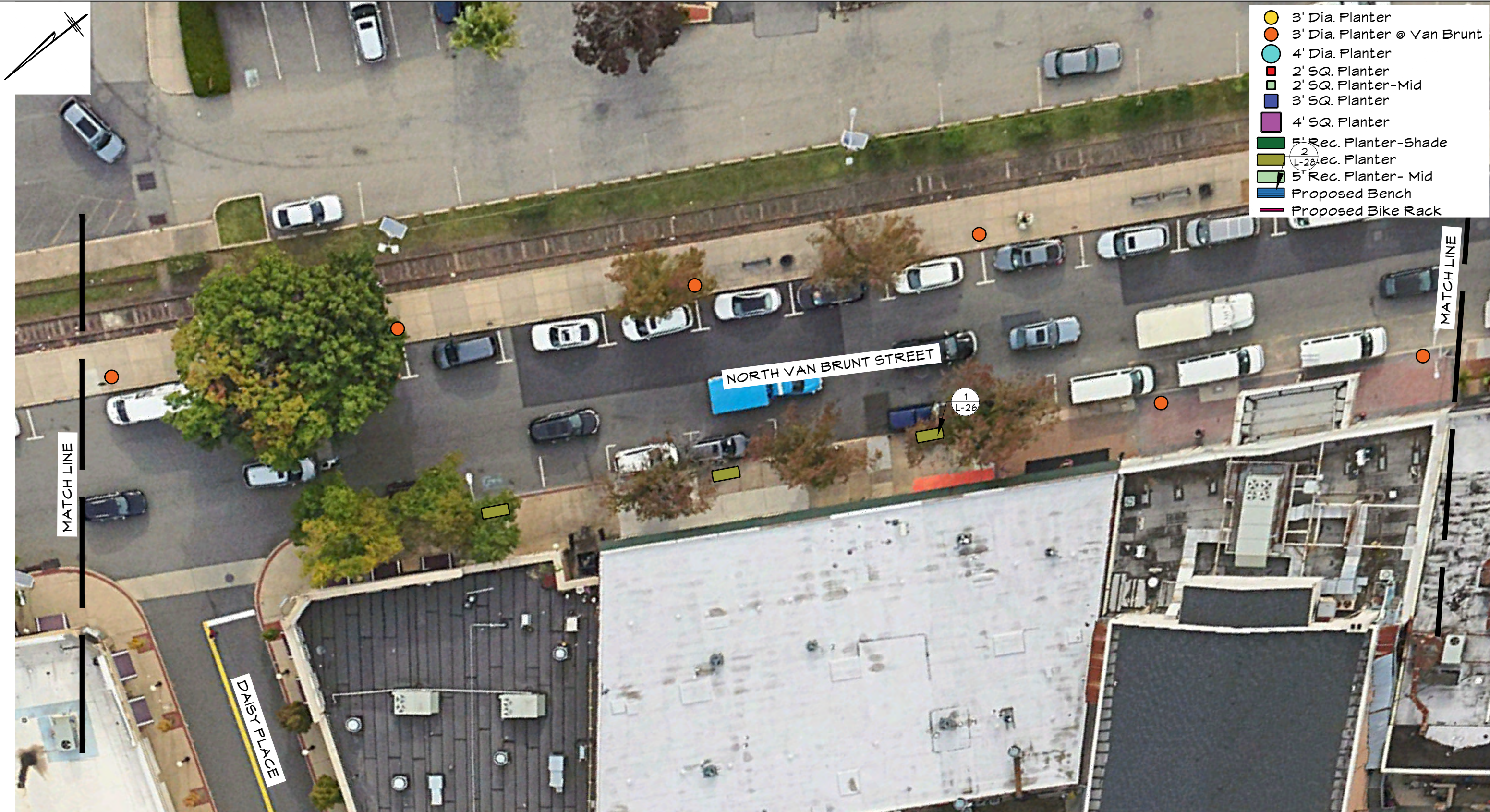


L-20	N. Van Brunt St. X Tallman Pl..
ENGLEWOOD, NJ STREETSCAPE IMPROVMENT	



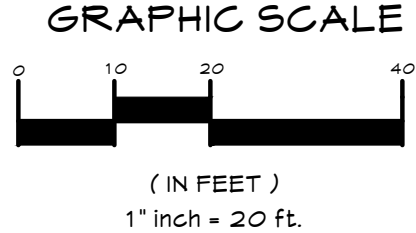
IQ
 Imbiano •Quigley
 Landscape Architects
 31 Mamaroneck Ave
 White Plains, New York 10601
 admin@iqlandarch.com
 (914) 232-0200

Scale 1" = 20'-0"	
Date JUNE 26, 2024	
Drawn By ST	Checked By JAI



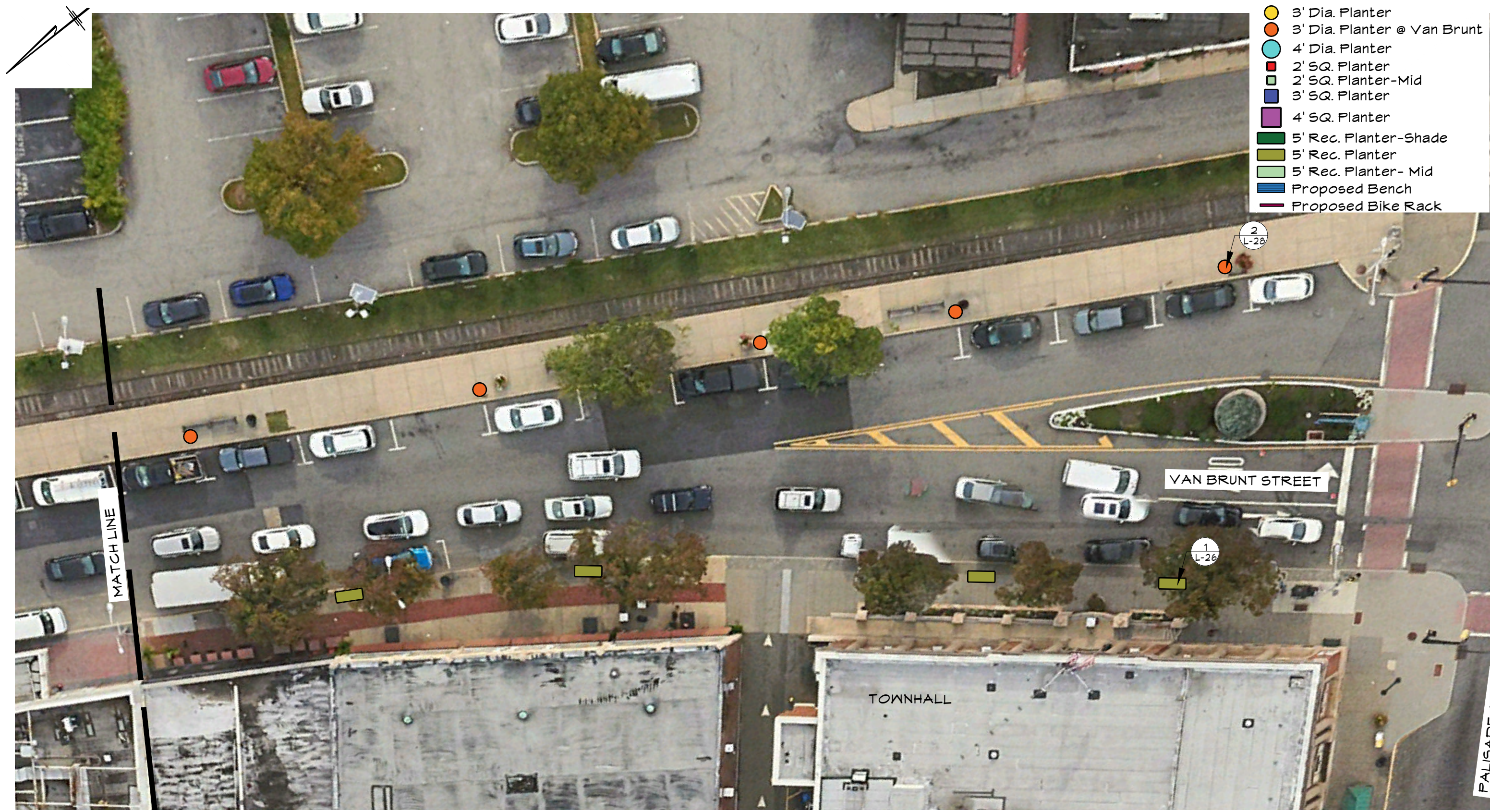
- 3' Dia. Planter
- 3' Dia. Planter @ Van Brunt
- 4' Dia. Planter
- 2' SQ. Planter
- 2' SQ. Planter-Mid
- 3' SQ. Planter
- 4' SQ. Planter
- 5' Rec. Planter-Shade
- 2' Rec. Planter
- 5' Rec. Planter- Mid
- Proposed Bench
- Proposed Bike Rack

L-20	N. Van Brunt St. X Daisy Pl.
ENGLEWOOD, NJ STREETSCAPE IMPROYMENT	



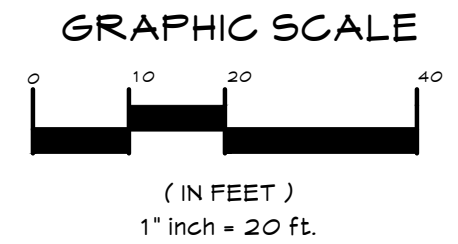
IQ
Imbiano •Quigley
Landscape Architects
31 Mamaroneck Ave
White Plains, New York 10601
admin@iqlandarch.com
(914) 232-0200

Scale 1" = 20'-0"	
Date JUNE 26, 2024	
Drawn By ST	Checked By JAI



- 3' Dia. Planter
- 3' Dia. Planter @ Van Brunt
- 4' Dia. Planter
- 2' SQ. Planter
- 2' SQ. Planter-Mid
- 3' SQ. Planter
- 4' SQ. Planter
- 5' Rec. Planter-Shade
- 5' Rec. Planter
- 5' Rec. Planter- Mid
- ▬ Proposed Bench
- ▬ Proposed Bike Rack

L-22	N. Van Brunt St. X Palisade Ave.
ENGLEWOOD, NJ STREETSCAPE IMPROVYMENT	

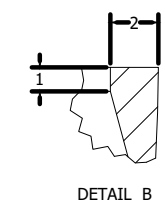
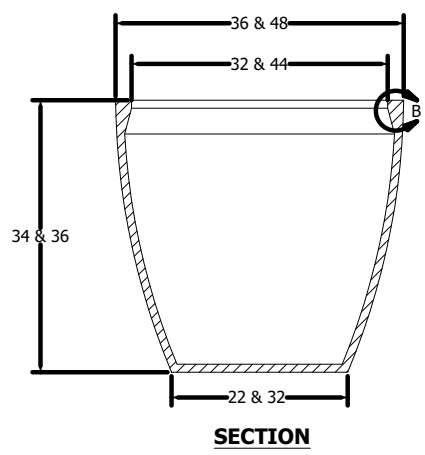
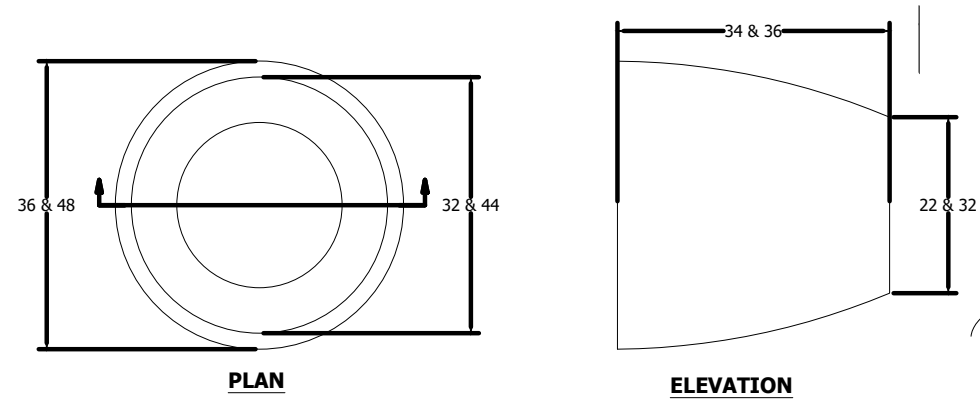


IQ

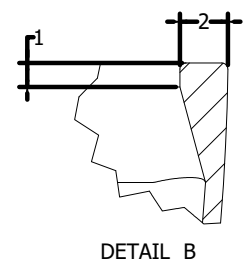
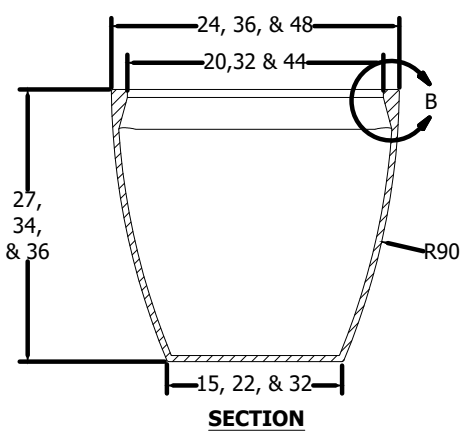
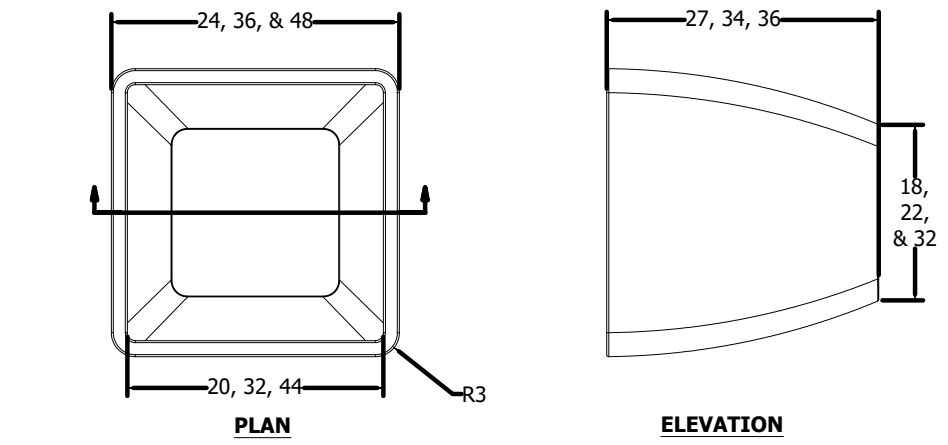
Imbiano •Quigley
Landscape Architects

31 Mamaroneck Ave
White Plains, New York 10601
admin@iqlandarch.com
(914) 232-0200

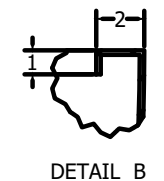
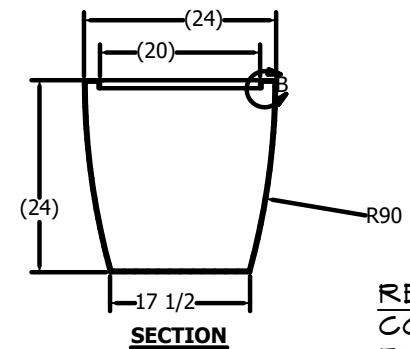
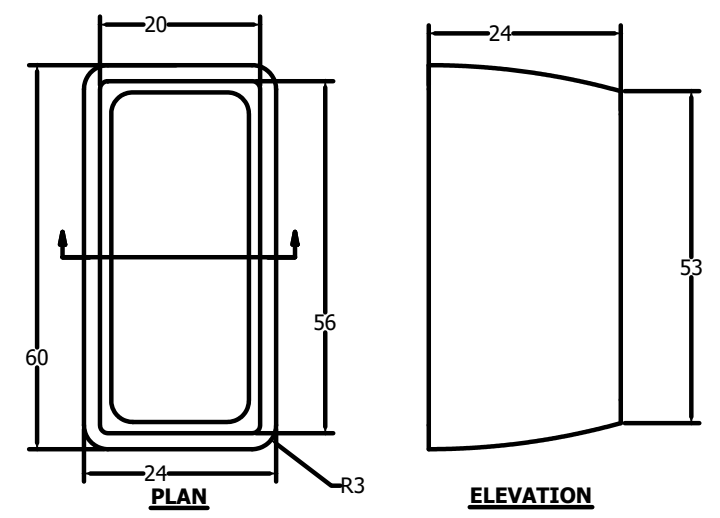
Scale 1" = 20'-0"	
Date JUNE 26, 2024	
Drawn By ST	Checked By JAI



ROUND PLANTERS
COLOR: CHARCOAL
FINISH: ACID ETCH
DCS 3600 - 3'Ø X 34"H
DCS 4800 - 4'Ø X 44"H



SQUARE PLANTERS
COLOR: CHARCOAL
FINISH: ACID ETCH
DCR 2400 - 2'SQ. X 27"H
DCR 3600 - 3'SQ. X 34"H
DCR 4800 - 4'SQ. X 44"H



RECTANGULAR PLANTERS
COLOR: CHARCOAL
FINISH: ACID ETCH
DCR 602424 - 60"L X 24"W X 24"H

1

ROUND PLANTER

SCALE: 1/2"=1'-0"

2

SQAURE PLANTER

SCALE: 1/2"=1'-0"

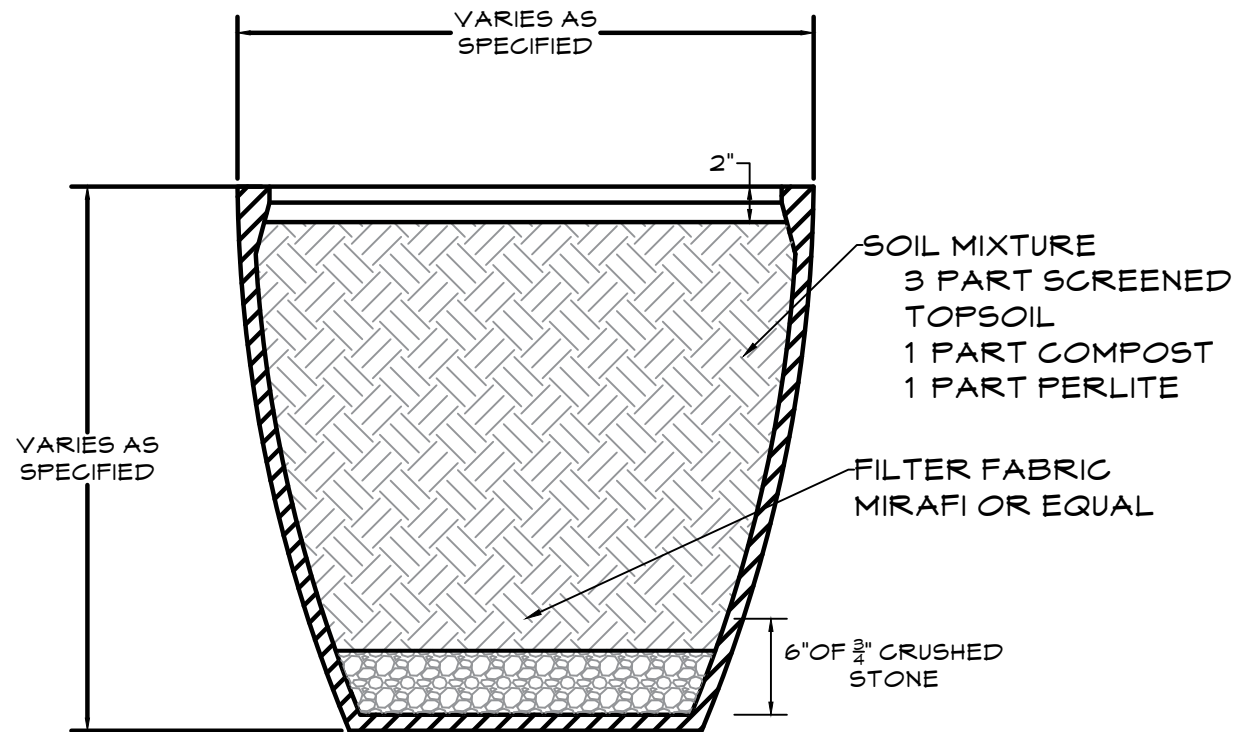
3

RECTANGULAR PLANTER

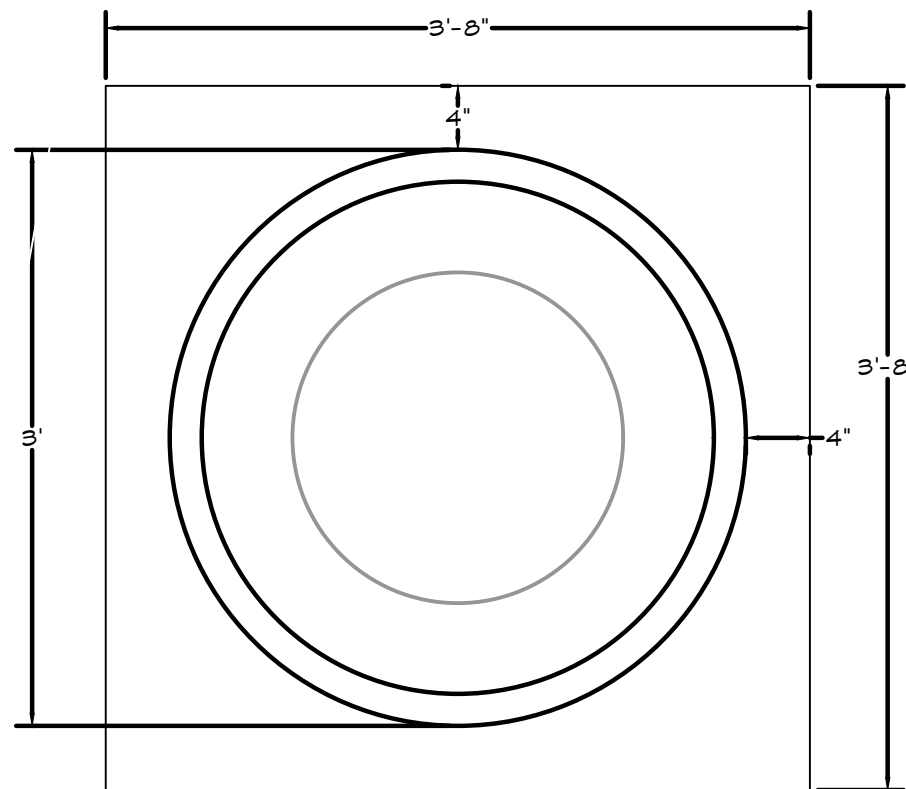
SCALE: 1/2"=1'-0"

TOURNESOL PLANTERS		
PRODUCT #	SIZE	QUANTITY
DCS 3600	3'Ø - 34" H	58
DCS 3400	4'Ø - 44" H	1
DCR 2400	24" SQ.-27" H	21
DCR 3600	36" SQ.-32" H	19
DCR 4800	48" SQ. - 36" H	13
DCR 602424	60"L-24"W-24"H	96

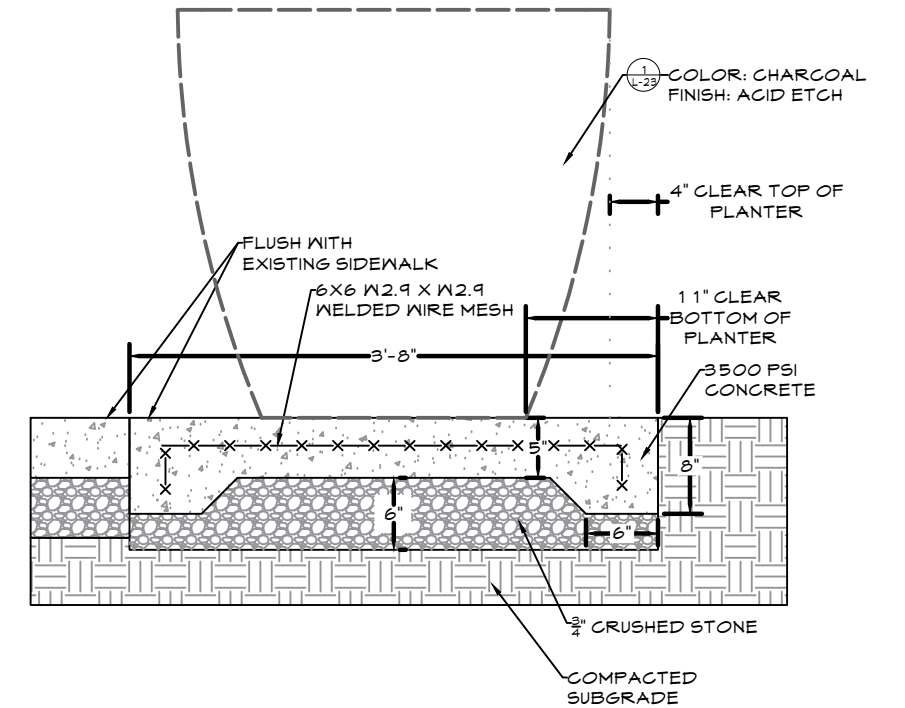
TOURNESOL SITEWORKS
T: 800-542-2282
2930 FABER STREET
UNION CITY, CA 94587



1 (TYP.) PLANTER CROSS SECTION
SCALE: 1/2"=1'-0"



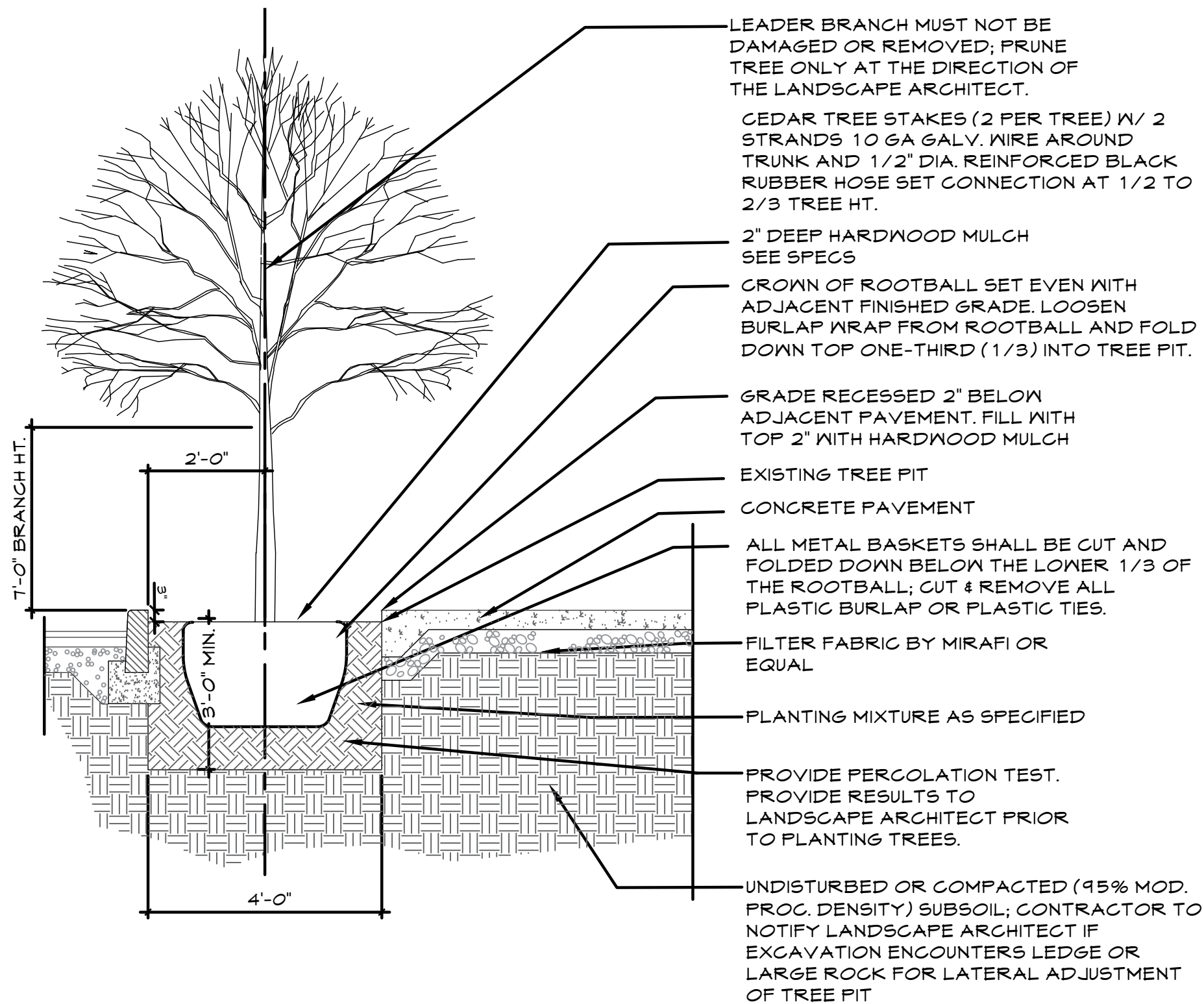
2 PLAN
SECTION
CONCRETE PAD FOR PLANTERS IN VETERANS MEMORIAL PARK
SCALE: 3/4



L-24	Planter Details
ENGLEWOOD, NJ STREETSCAPE IMPROVMENT	

IQ
 Imbiano -Quigley
 Landscape Architects
 31 Mamaroneck Ave
 White Plains, New York 10601
 admin@iqlandarch.com
 (914) 232-0200

Scale As Shown	
Date JUNE 26, 2024	
Drawn By ST	Checked By JAI



TYPICAL TREE PLANTING				
QTY	BOTANTICAL NAME	COMMON NAME	SIZE	REMARKS
3	Acer rubrum 'Red Sunset'	Red Maple	2½"-3" Cal.	B&B
3	Nyssa sylvatica 'Fire Master'	Black Tupelo	2½"-3" Cal.	B&B
5	Ulmus americana 'Princeton)	Princeton Elm	2½"-3" Cal.	B&B

- NOTE:
1. REMOVE EXISTING SOIL WITHIN EACH TREE PIT WHERE A NEW TREE IS PROPOSED TO BE PLANTED. DISCARD OFF SITE
 2. CONTRACTOR TO PROVIDE A SLOW RELEASE TREE WATERING BAG AT EACH TREE. TREE GATOR OR EQUAL. PROVIDE SAMPLE FOR LANDSCAPE ARCHITECTS APPROVAL.

1

TREE PIT

SCALE: 3/8"=1'-0"

L-25	TREE PIT DETAIL
ENGLEWOOD, NJ STREETSCAPE IMPROVMENT	

IQ

Imbiano -Quigley
Landscape Architects

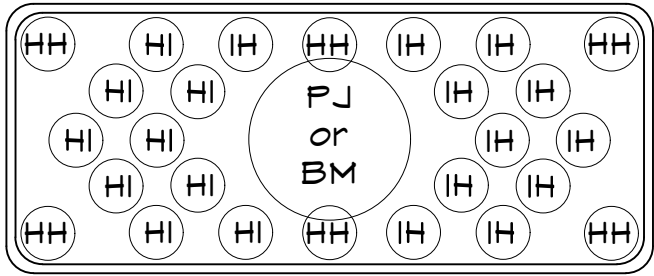
31 Mamaroneck Ave
White Plains, New York 10601
admin@iqlandarch.com
(914) 232-0200

Scale
As Shown

Date
JUNE 26, 2024

Drawn By
ST

Checked By
JAI

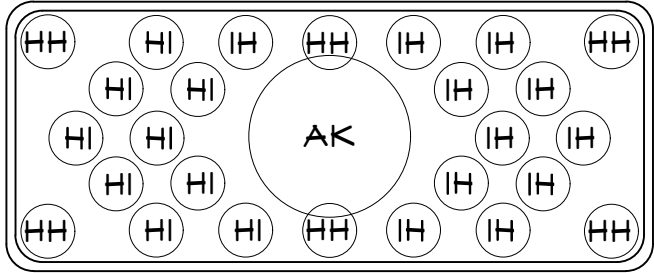


1

5' Rectangular Planter

SCALE: N.T.S.

Quantity per Planter	Total Quantity	KEY	Botanical Name	Common Name	Size	Remarks
Alternate with	34	PJ	Pieris japonica ‘compacta’	Japanese Andromeda	3 gallon	
	34*	BM	Buxus macrophylla ‘sprinter’	Sprinter Boxwood	3 gallon	
6	408	HH	Hedera helix ‘White Wonder’	English Ivy	4 ½” in. pot	White/green Min. 12” long runners
20	1360	IH	Impatiens x hybrida SunPatiens	SunPatiens	4 ½” in. pot	Purple Candy

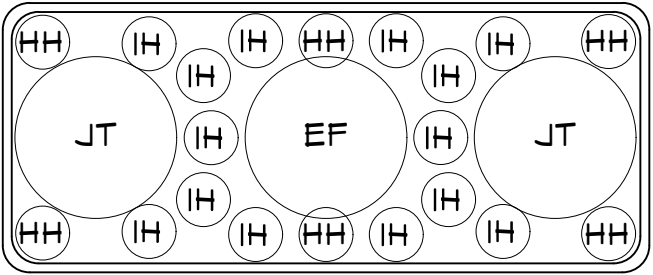


2

5' Rectangular-Shade

SCALE: N.T.S

Quantity per Planter	Total Quantity	KEY	Botanical Name	Common Name	Size	Remarks
1	19	AK	Azalea x ‘Karen’	Azalea ‘Karen’	3 gallon	
6	114	HH	Hedera helix ‘White Wonder’	English Ivy	4 ½” in. pot	White / Green Min. 12” long runner
20	380	IH	Impatiens x hybrida SunPatiens	SunPatiens	4 ½” in. pot	Peach Candy or Pink Candy

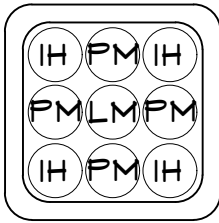


3

5' Rectangular Planter-Mid

SCALE: N.T.S.

Quantity per Planter	Total Quantity	KEY	Botanical Name	Common Name	Size	Remarks
2	18	JT	Juniperus Tortuga	Tortuga Juniper	3 gallon	Plant 1 each end of planter
6	54	HH	Hedera helix ‘White Wonder’	English Ivy	4 ½” in. pot	White / Green Min. 12” long runner
14	126	IH	Impatiens x hybrida SunPatiens	SunPatiens	4 ½” in. pot	Peach Candy or Pink Candy
1	9	EF	Euonymous fortunei ‘Emerald Gaiety’	Wintercreeper	3 gallon	Plant in center

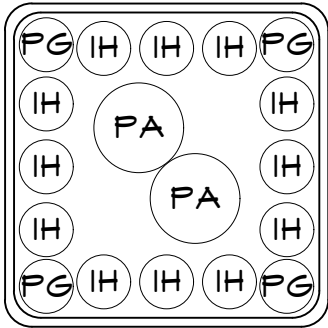


1

24"x24" SQ. PLANTERS

SCALE: N.T.S.

Quantity per Planter	Total Quantity	KEY	Botanical Name	Common Name	Size	Remarks
1	17	LM	Liriope muscari 'Varigata'	Variegated Lily Turf	2 gallon	Min. 12" Height
4	68	PM	Plectranthus glabratus	White-Edged Swedish Ivy	4 ½" in. pot	Variegated Green/White
						Min. 12" long runner
4	68	IH	Impatiens x hybrida SunPatiens	SunPatiens	4 ½" in. pot	Sweetheart White

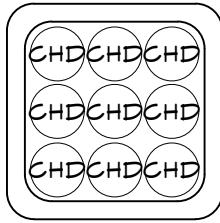


2

36"x36" SQ. Planters

SCALE: N.T.S.

Quantity per Planter	Total Quantity	KEY	Botanical Name	Common Name	Size	Remarks
2	38	PA	Pennisetum alopecuroides 'Hameln'	Hameln Dwarf Grass	2 gallon	Plant next to each other
6	114	IH	Impatiens x hybrida SunPatiens	SunPatiens	4 ½" in. pot	Coral Pink
6	114	IH	Impatiens x hybrida SunPatiens	SunPatiens	4 ½" in. pot	Lilac Improved
4	76	PG	Plectranthus glabratus	White Edged Swedish Ivy	4 ½" in. pot	Variegated Green/White Min. 12" long runner

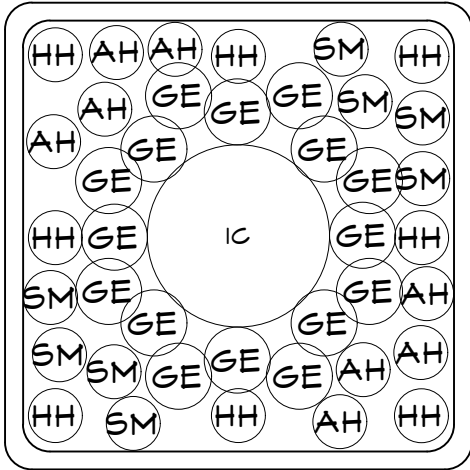


3

24"x24" SQ. PLANTERS-MID

SCALE: N.T.S.

Quantity per Planter	Total Quantity	KEY	Botanical Name	Common Name	Size	Remarks
9	36	CHD	Calibrachoa x hybrida 'Dracula'	Million Bells	4 ½" in. pot	Pink with Black Center

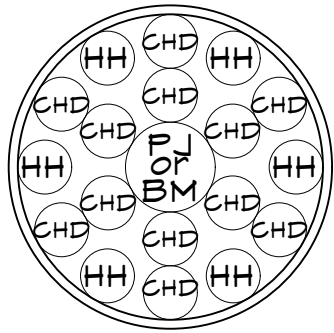


4

48"x48" SQ. Planters

SCALE: N.T.S.

Quantity per Planter	Total Quantity	KEY	Botanical Name	Common Name	Size	Remarks
1	13	IC	Ilex crenata 'Schwoebel'	Schwoebel Holly	5 gallon	
16	208	GE	Geranium	Geranium	6" in. pot	Red
4	52	SM	Salvia merleau 'Blue Skywalker'	Sage	4 ½" in. pot	12"-18" Ht.
4	52	AH	Angelonia hybrid	Angelonia	4 ½" in. pot	White
8	104	HH	Hedera helix ' White Wonder'	English Ivy	4 ½" in. pot	White / Green Min. 12" long runner

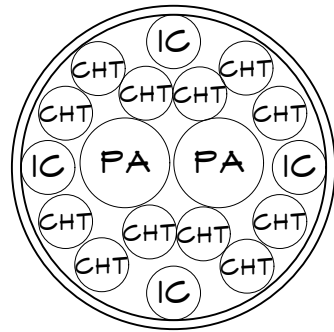


1

36" Dia. Planters

SCALE: N.T.S.

Quantity per Planter	Total Quantity	KEY	Botanical Name	Common Name	Size	Remarks
*Alternate with	21	PJ	Pieris japonica ‘Compacta’	Japanese Andromeda	2 gallon	
	20	BM	Buxus macrophylla ‘Sprinter’	Sprinter Boxwood	2 gallon	
6	246	HH	Hedera helix ‘White Wonder’	English Ivy	4 ½” in. pot	White / Green Min. 12” long runner
12	492	CHD	Calibrachoa hybrida ‘Dracula	Million Bells	4 ½” in. pot	Pink with Black Center

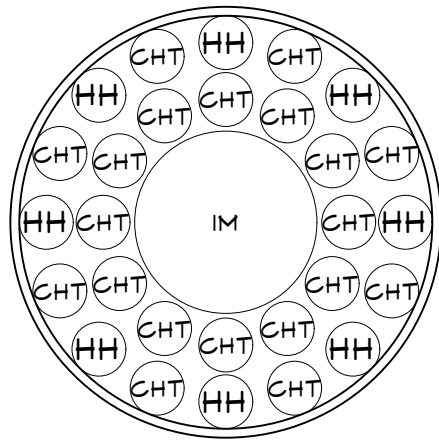


2

36" Dia. Planters Along North Van Brunt

SCALE: N.T.S.

Quantity per Planter	Total Quantity	KEY	Botanical Name	Common Name	Size	Remarks
2	32	PA	Pennisetum alopecuroides ‘Hameln’	Dwarf Fountain Grass	2 gallon	
4	64	IC	Ipomoea ‘Cut Leaf’	Sweet Potato Vine	4 ½” in. pot	Spotlight Lime
12	192	CHT	Calibrachoa x hybrida ‘Terra Cotta’	Million Bells	4 ½” in. pot	Yellow with Red Center



3

48" Dia. Planters

SCALE: N.T.S.

Quantity per Planter	Total Quantity	KEY	Botanical Name	Common Name	Size	Remarks
1	1	IM	Ilex meserveae	Blue Prince Holly	5 gallon	
8	8	HH	Hedera helix ‘White Wonder’	English Ivy	4 ½” in. pot	White / Green Min. 12” long runner
20	20	CHT	Calibrachoa x hybrida ‘Terra Cotta’	Million Bells	4 ½” in. pot	Yellow with Red Center

L-28 Planter Plant Lists

ENGLEWOOD, NJ STREETSCAPE IMPROVMENT

IQ

Imbiano -Quigley
Landscape Architects

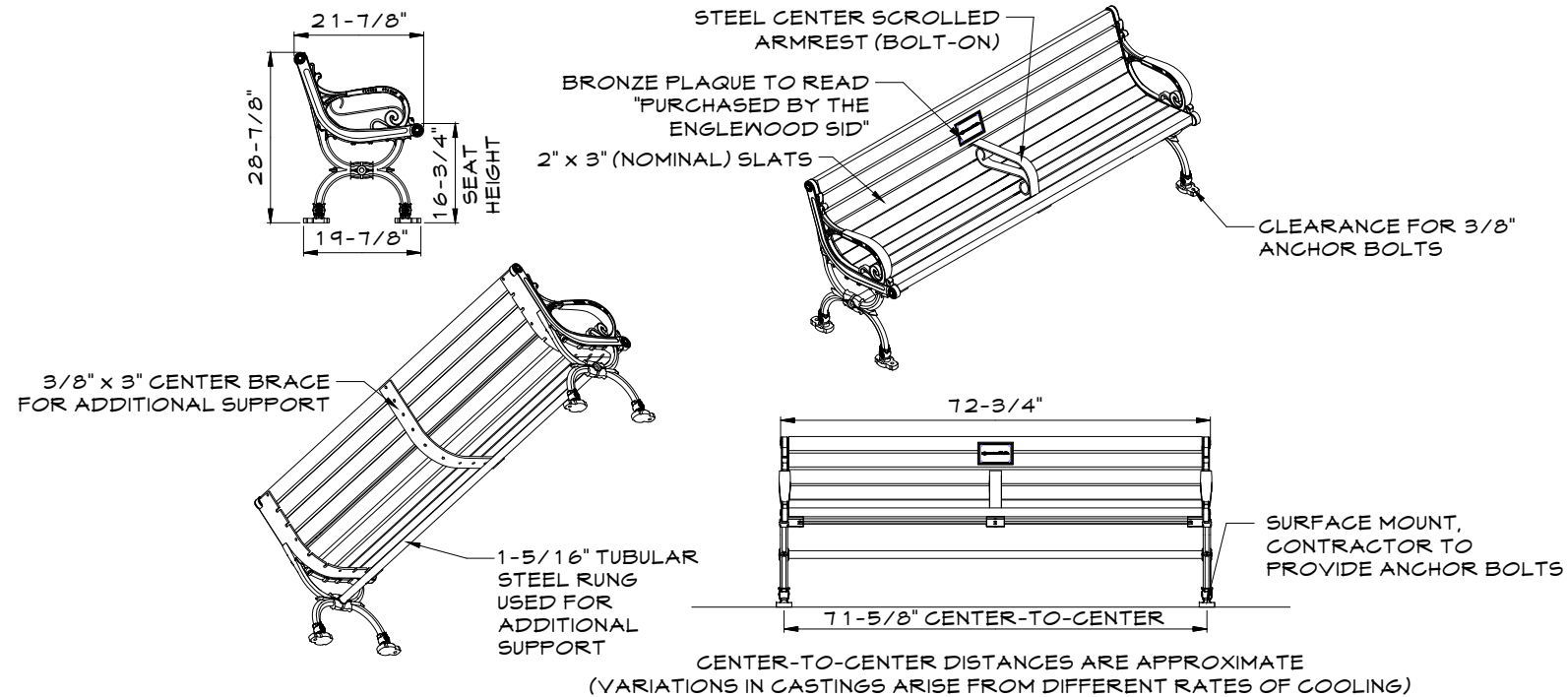
31 Mamaroneck Ave
White Plains, New York 10601
admin@iqlandarch.com
(914) 232-0200

Scale
As Shown

Date
JUNE 26, 2024

Drawn By
ST

Checked By
JAI

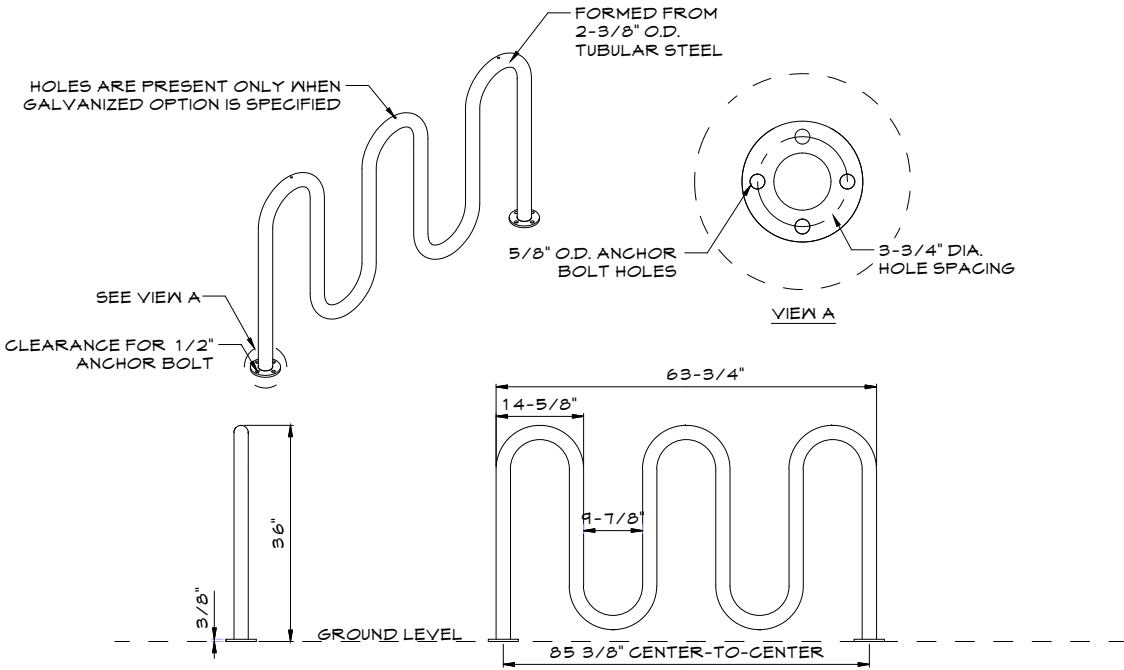


- NOTES:
1. PROVIDE SHOP DRAWINGS FOR APPROVAL
 2. CLASSIC BENCH C-10, STANDARD 6' LENGTH WITH INTERMEDIATE ARMREST
 3. SURFACE MOUNT
 4. IPE WOOD
 5. POWDER COATING BLACK
 5. DUCTILE IRON CASTINGS COME WITH A TEN YEAR WARRANTY AGAINST BREAKAGE.
 6. ALL FABRICATED METAL COMPONENTS ARE STEEL SHOTBLASTED, ETCHED, PHOSPHATIZED, PREHEATED, AND ELECTROSTATICALLY POWDER-COATED WITH T.G.I.C. POLYESTER POWDER COATINGS. PRODUCTS ARE FULLY CLEANED AND PRETREATED, PREHEATED AND COATED WHILE HOT TO FILL CREVICES AND BUILD COATING FILM. COATED PARTS ARE THEN FULLY CURED TO COATING MANUFACTURER'S SPECIFICATIONS. THE THICKNESS OF THE RESULTING FINISH AVERAGES 8-10 MILS (200-250 MICRONS).
 7. IT IS NOT RECOMMENDED TO LOCATE ANCHOR BOLTS UNTIL BENCH IS IN PLACE. THIS VICTOR STANLEY, INC. PRODUCT MUST BE PERMANENTLY AFFIXED TO THE GROUND.
 8. ANCHOR BOLTS NOT PROVIDED BY VICTOR STANLEY, INC.

1 BENCH - CLASSIC C-10

SCALE: 3/8"=1'-0"

VICTOR STANLEY
T: 800-368-2573
2103 BRICKHOUSE ROAD
CUNKIRK, MD 20754



- NOTES:
1. PROVIDE SHOP DRAWINGS FOR APPROVAL
 2. CYCLE SENTRY #BRCS-105
 3. SURFACE MOUNT
 4. POWER COAT BLACK
 5. ALL FABRICATED METAL COMPONENTS ARE STEEL SHOTBLASTED, ETCHED, PHOSPHATIZED, PREHEATED, AND ELECTROSTATICALLY POWDER-COATED WITH T.G.I.C. POLYESTER POWDER COATINGS. PRODUCTS ARE FULLY CLEANED AND PRETREATED, PREHEATED AND COATED WHILE HOT TO FILL CREVICES AND BUILD COATING FILM. COATED PARTS ARE THEN FULLY CURED TO COATING MANUFACTURER'S SPECIFICATIONS. THE THICKNESS OF THE RESULTING FINISH AVERAGES 8-10 MILS (200-250 MICRONS).
 5. IT IS NOT RECOMMENDED TO LOCATE ANCHOR BOLTS UNTIL BIKE RACK IS IN PLACE. THIS VICTOR STANLEY, INC. PRODUCT MUST BE PERMANENTLY AFFIXED TO THE GROUND.
 6. ANCHOR BOLTS NOT PROVIDED BY VICTOR STANLEY, INC.

2 BIKE RACK - BRCS-107

SCALE: 3/8"=1'-0"

VICTOR STANLEY
T: 800-368-2573
2103 BRICKHOUSE ROAD
CUNKIRK, MD 20754

VICTOR STANLEY SITE FURNITURE		
PRODUCT #	SIZE	QUANTITY
C10-6FT-ARM-E	6FT	17
BRCS-107-SM-E	7'-2"	3
BRCS-105-SM-E	6'-3/4"	2

L-29	SITE FURNITURE
ENGLEWOOD, NJ STREETSCAPE IMPROVMENT	

IQ

Imbiano · Quigley
Landscape Architects

31 Mamaroneck Ave
White Plains, New York 10601
admin@iqlandarch.com
(914) 232-0200

Scale As Shown	
Date JUNE 26, 2024	
Drawn By ST	Checked By JAI



White Angelonia



Million Bells 'Terra Cotta'



Million Bells 'Dracula'



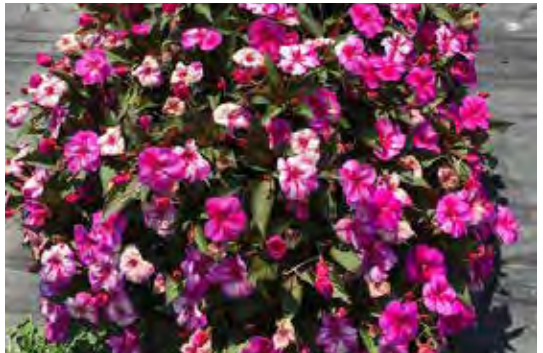
SunPatiens 'Coral Pink'



SunPatiens
'Lilac Improved'



SunPatiens
'Sweetheart White'



SunPatiens 'Purple Candy'



SunPatiens 'Pink Candy'



Geranium



Wintercreeper
'Emerald Gaiety'



White Edge English Ivy



White Edged Swedish Ivy



Sweet Potato Vine
'Cut Leaf'



Tortuga Juniper

L-30 PLANT IMAGES

ENGLEWOOD, NJ STREETSCAPE IMPROVMENT

IQ

Imbiano Quigley
Landscape Architects

31 Mamaroneck Ave
White Plains, New York 10601
admin@iqlandarch.com
(914) 232-0200

Scale
As Shown

Date
JUNE 26, 2024

Drawn By	Checked By
ST	JAI



Azalea x Karen



Sprinter Boxwood



Lillyturf



'Blue Skywalker' Sage



Hameln Fountain Grass



Schwoebel Holly



Blue Holly



Japanese Andomeda
'Compacta'



Red Sunset Maple



Fire Master Tupelo



Princeton Elm

L-3 1 PLANT IMAGES

ENGLEWOOD, NJ STREETSCAPE IMPROVMENT

IQ

Imbiano •Quigley
Landscape Architects

31 Mamaroneck Ave
White Plains, New York 10601
admin@iqlandarch.com
(914) 232-0200

Scale
As Shown

Date
JUNE 26, 2024

Drawn By	Checked By
ST	JAI