



## Site Specific Safety Plan

Brickoven Solar

Wasco County, Oregon

3/16/2021



# Table of Contents

<b>1</b>	<b><i>PROJECT DESCRIPTION</i></b> .....	<b>3</b>
<b>2</b>	<b><i>SAFETY COMMITMENT</i></b> .....	<b>3</b>
<b>3</b>	<b><i>APPLICABILITY</i></b> .....	<b>3</b>
<b>4</b>	<b><i>ROLES AND RESPONSIBILITIES</i></b> .....	<b>4</b>
4.1	<b>STRATEGIC CONSTRUCTION SOLUTIONS COMMITMENT TO SAFE WORK</b> .....	<b>4</b>
4.2	<b>PROJECT MANAGEMENT</b> .....	<b>4</b>
4.3	<b>CONSTRUCTION AND SAFETY MANAGERS</b> .....	<b>4</b>
4.4	<b>SUBCONTRACTORS</b> .....	<b>5</b>
<b>5</b>	<b><i>PROJECT EMERGENCY INFORMATION</i></b> .....	<b>5</b>
<b>6</b>	<b><i>SUBSTANCE ABUSE</i></b> .....	<b>6</b>
6.1	<b>STRATEGIC CONSTRUCTION SOLUTIONS ZERO TOLLARANCE POLICY</b> .....	<b>6</b>
<b>7</b>	<b><i>PROJECT SAFETY</i></b> .....	<b>7</b>
<b>8</b>	<b><i>BASIC SAFETY RULES</i></b> .....	<b>8</b>
<b>9</b>	<b><i>STOP WORK AUTHORITY</i></b> .....	<b>8</b>
<b>10</b>	<b><i>SAFETY AND HEALTH TRAINING</i></b> .....	<b>9</b>
<b>11</b>	<b><i>JOBSITE SAFETY AUDITS</i></b> .....	<b>9</b>
<b>12</b>	<b><i>PERSONAL PROTECTIVE EQUIPEMENT</i></b> .....	<b>9</b>
<b>13</b>	<b><i>HOUSEKEEPING AND SANITATION</i></b> .....	<b>10</b>
<b>14</b>	<b><i>TOOL SAFETY</i></b> .....	<b>11</b>
<b>15</b>	<b><i>HEARING CONSERVATION</i></b> .....	<b>11</b>
<b>16</b>	<b><i>CONFINED SPACE</i></b> .....	<b>12</b>
16.1	<b>Scope</b> .....	<b>12</b>
16.2	<b>Background</b> .....	<b>12</b>
16.3	<b>Requirements</b> .....	<b>12</b>
<b>17</b>	<b><i>GROUNDING REQUIREMENTS</i></b> .....	<b>13</b>
<b>18</b>	<b><i>VEHICLE AND EQUIPMENT OPERATION</i></b> .....	<b>13</b>
<b>19</b>	<b><i>OVERHEAD LINE CROSSINGS</i></b> .....	<b>14</b>

<b>20</b>	<b>HAZCOM/ SAFETY DATA SHEETS.....</b>	<b>14</b>
<b>21</b>	<b>ENERGY CONTROL (LOTO) .....</b>	<b>14</b>
<b>22</b>	<b>FALL PROTECTION / WORKING FROM HEIGHTS .....</b>	<b>15</b>
<b>23</b>	<b>USE OF LADDERS .....</b>	<b>15</b>
<b>24</b>	<b>RIGGING.....</b>	<b>15</b>
<b>25</b>	<b>USE OF CRANES .....</b>	<b>16</b>
25.1	Scope.....	16
25.2	Procedure .....	16
25.3	CRANE OPERATOR REQUIREMENTS AND QUALIFICATIONS .....	17
25.4	OPERATIONS NEAR A POWER LINE.....	19
<b>26</b>	<b>EXCAVATION AND TRENCHING.....</b>	<b>20</b>
<b>27</b>	<b>STEEL ERECTION .....</b>	<b>20</b>
<b>28</b>	<b>CYRSTALLINE SILICA.....</b>	<b>20</b>
<b>29</b>	<b>FIRE PROTECTION .....</b>	<b>23</b>
29.1	Fire Safety During Construction.....	23
<b>30</b>	<b>ENVIRONMENTAL CONCERNS AND PROCEDURES .....</b>	<b>23</b>
30.1	Weather .....	23
<b>31</b>	<b>REPORTING OF INJURIES .....</b>	<b>25</b>
<b>32</b>	<b>NOTIFICATIONS .....</b>	<b>26</b>
<b>33</b>	<b>ENFORCEMENT OF SAFETY POLICY .....</b>	<b>27</b>
<b>34</b>	<b>SITE SANITARY FACILITIES.....</b>	<b>27</b>
<b>35</b>	<b>ATTACHMENTS/FORMS.....</b>	<b>27</b>

## 1 PROJECT DESCRIPTION

### Scope of Work

The Scope of Work is to furnish or procure, handle, and store as necessary, all materials, equipment, machinery, tools, consumables, labor and transportation, except for procurement and transportation of Owner Furnished Equipment; (i) perform all construction, supervision, administration and other services and items described herein; (ii) perform and endorse all engineering and design services (as required); (iii) perform all testing services required as part of the Work; (iv) perform quality control checks, including inspection of all materials and equipment to be used or incorporated into the work, and rejection of those items determined not to be in compliance with the Requirements; and (v) achieve Substantial Completion by the Guaranteed Substantial Completion Date and achieve Final Completion by the Scheduled Final Completion.

Project is a 200 MW AC solar-powered electrical generation facility known as Brickoven Solar (60MW) and Daybreak Solar LLC (140MW) and is located in Wasco County, Oregon

## 2 SAFETY COMMITMENT

The Safety Policy of Strategic Construction Solutions, an Atwell, LLC Company, is designed to comply with the Standards of the Occupational Safety and Health Administration (OSHA), and to ensure and maintain a safe and injury/illness free workplace. A copy of the Strategic Construction Solutions Health and Safety Policy is available for all employees use and reference. These policies shall always be available in the home office. In addition, they have been uploaded into ISNetwork for Avangrid Renewables review.

Compliance with the following Safety Policy and all items contained therein is mandatory for all employees of the company. The authorization and responsibility for enforcement has been given primarily to the on-site safety manager. The onsite Construction management and supervisors share in this responsibility as well.

Strategic Construction Solutions is fully committed to performing all aspects of construction and management of this project in the safest manner possible. It is company policy that accident prevention be a prime concern of all employees. This includes the safety and well-being of our employees, subcontractors, and clients. This also includes the prevention of wasteful, inefficient operations, and damage to property and equipment.

Strategic Construction Solutions and its subcontractors will review and adhere to this safety plan and will work with Avangrid Renewables and Strategic Construction Solutions staff to complete this project in a professional and safe manner. Strategic Construction Solutions management will take an active role in promoting and enforcing safe work practices throughout the duration of this project.

## 3 APPLICABILITY

This Safety Work Plan applies to all employees of Strategic Construction Solutions, Contractors and Avangrid Renewables, regardless of position within the company. The safety rules contained herein apply to all subcontractors and anyone who is on a company project site. This Safe Work Plan is designed to provide basic information and more details can be found in corresponding

specific policies. Every employee is expected to comply with the Safe Work Plan, Exhibit J.1 from Avangrid Renewables as well as all OSHA Health and Safety Standards.

## **4 ROLES AND RESPONSIBILITIES**

### **4.1 STRATEGIC CONSTRUCTION SOLUTIONS COMMITMENT TO SAFE WORK**

1. Strategic Construction Solutions is committed to meeting the highest standards of safe work. It is expected that all employees carry out their work in a safety conscious manner to protect the well-being of all persons on the worksite, including members of the public.
2. Strategic Construction Solutions Management strives to ensure that the Company achieves superior Health & Safety performance while providing an enabling environment instilling a culture that allows all employees to participate and work collaboratively in developing, promoting, and improving Health & Safety values at work.

### **4.2 PROJECT MANAGEMENT**

1. Plan and execute all work activities to comply with the stated objectives of the Strategic Construction Solutions Health and Safety Program.
2. Review and qualify subcontractor prior to assigning them to the project.
3. Identify and provide training and personal protective equipment to employees for any hazardous conditions or material.
4. Hold all Construction Managers, Supervisors, Employees and Sub Contractors responsible and accountable for workplace Health and Safety goals and objectives through positive reinforcement, immediate intervention and utilization and documentation of employee performance.

### **4.3 CONSTRUCTION AND SAFETY MANAGERS**

1. Perform Health and Safety inspections of project using the SCS Safe App and recording results in Procore. Direct the employee or subcontractors to take necessary corrective action to eliminate unsafe acts and/or conditions.
2. Review with subcontractors Strategic Construction Solutions Safety Policies as well as Exhibit J.1 from Avangrid Renewables.
3. Attend subcontractor safety meetings and evaluate effectiveness.
4. Organize and Conduct project safety meetings
5. Determine the PPE needed by employees and subcontractors and ensure its availability and proper usage.
6. Oversee the creation and distribution of the Jobsite Hazard Analysis (JHA).
7. Investigate and review accident, incidents, near misses and any unsafe acts with project employees and subcontractors.
8. Review subcontractor JHA for accuracy and effectiveness.
9. Conduct monthly site safety audits using the SCS Safe App and ensure results are uploaded to Procore.

10. Regularly inspect first aid kits, AED's and Fire Extinguishers and document the inspection.

#### 4.4 SUBCONTRACTORS

1. Contractors are required to follow or implement the work practices and systems described below while performing any work on the above listed project scope:
  - a. Attend a safety orientation, pre-job meeting, or kick-off meeting provided by Strategic Construction Solutions prior to any work beginning.
  - b. Monitor employees for substance abuse and report nonconformities to Strategic Construction Solutions
  - c. Ensure personnel have the required training and competency for their work.
  - d. Participate in Strategic Construction Solutions tailgate safety meetings, job safety analysis or hazard assessment and on the job safety inspections.
  - e. Perform a pre-job safety inspection that includes all equipment.
  - f. Report all injuries, spills, property damage incidents and near misses to SCS safety manager.
  - g. Comply with onsite and Owner/Client safety rules outlined in this document and exhibit J.1 from Avangrid Renewables.
  - h. Keep clean and restore the work site daily after completion of work tasks.

### 5 PROJECT EMERGENCY INFORMATION

1. The following Emergency/Project Contact Information Sheet with a map will be posted onsite for supervisors and employee's reference.

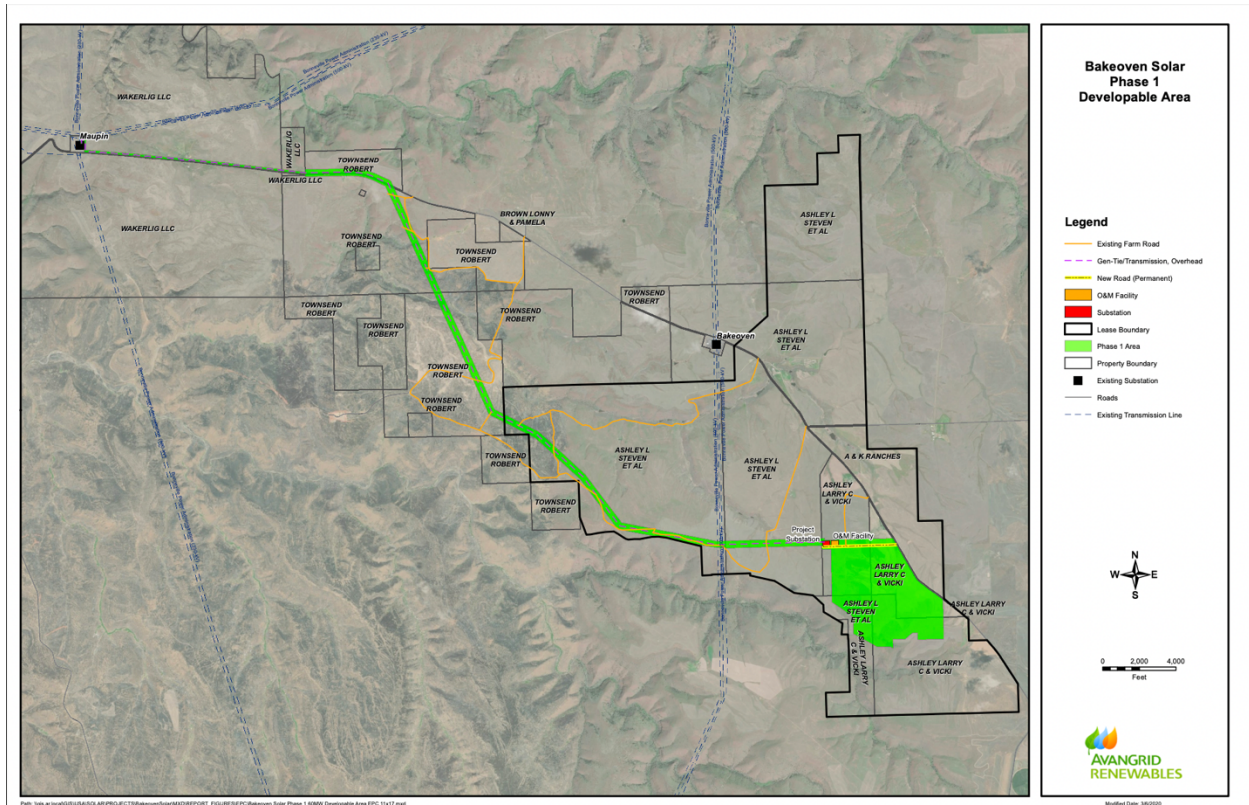
Project Contact Information				
Title	Name	Phone Office	Cell	Email
<b>STRATEGIC CONSTRUCTION SOLUTIONS</b>				
Regional Safety Manager	Dustin Smith	480.586.2157	480.352.0300	<a href="mailto:dsmith@atwell-group.com">dsmith@atwell-group.com</a>
Project Manager	Erik Johansen	515.491.9469		<a href="mailto:ejohansen@scsbuild.com">ejohansen@scsbuild.com</a>
Construction Manager	John Hartman			<a href="mailto:jhartman@scsbuild.com">jhartman@scsbuild.com</a>
Quality Manager	TBD			
Site Safety Manager	Kenneth Temple	480.532.4170		<a href="mailto:ktemple@scsbuild.com">ktemple@scsbuild.com</a>
<b>AVANGRID RENEWABLES</b>				
On Site Contact	Ian Eppley	864.871.9403		<a href="mailto:ian.eppley@avengrid.com">ian.eppley@avengrid.com</a>
<b>SCS SUB-CONTRACTORS</b>				
Civil	Crestline		541.506.4000	
Substation Electrical	Brink	TBD		
Transmission Line	Brink	TBD		
<b>EMERGENCY SERVICES</b>				
Oregon 811		811	800.332.2344	<a href="http://www.digsafelyoregon.com">www.digsafelyoregon.com</a>
Emergency Services	EMS	911	911	
Priority Care	PC365	855.288.9490		ID Code: 4020193-35
Local Law Enforcement	Wasco County Sherriff	541.506.2580 <i>Nonlife threatening</i>	911 Emergency	511 Washington Street The Dalles, OR 97058
Local Occupational Clinic	Deschutes Rim Health Clinic	541.395.2911		1605 George Jackson Rd, Maupin, OR 97037

Local Hospital	Pioneer Memorial Hospital	541.676.9133 <i>Nonlife threatening</i>	911 Emergency	564 E. Pioneer Dr. Heppner, OR 97836
----------------	---------------------------	--	------------------	---

**\*\*PROJECT ADDRESS:**

90664 Bakeoven Market Rd.  
Maupin, Oregon 97037  
United States

**45.1270, -120.8860**



## 6 SUBSTANCE ABUSE

### 6.1 STRATEGIC CONSTRUCTION SOLUTIONS ZERO TOLERANCE POLICY

1. Strategic Construction Solutions is committed to providing a safe work environment and to fostering the well-being and health of its employees and subcontractors. That commitment is jeopardized when any SCS employee or subcontractor illegally uses drugs and/or alcohol on the job, comes to work under their influence, or possesses, distributes or sells drugs in the workplace. Therefore, Strategic Construction Solutions has established and maintains zero tolerance in accordance with the following policy:

- a. It is a violation of Strategic Construction Solutions policy for any employee or subcontractor to possess, sell, trade, or offer for sale illegal drugs or otherwise engage in the illegal use of drugs on the job.
  - b. It is a violation of company policy for anyone to report to work under the influence of illegal drugs and/or alcohol.
  - c. It is a violation of company policy for anyone to use prescription drugs illegally. (However, nothing in this policy precludes the appropriate use of legally prescribed medications.)
  - d. Violations of SCS Substance Abuse zero tolerance policy will result in termination of employee or removal from work site for subcontractor.
2. It is the responsibility of SCS supervision to report employees whenever they see changes in performance or behavior that suggests an employee has a drug and or alcohol problem. It is not the supervisor's job to diagnose personal problems. Everyone shares responsibility for maintaining a safe work environment.
  3. Strategic Construction Solutions prohibits the use and distribution of illegal drugs while working on any job location. SCS requires all employees and subcontractors to abide by SCS Substance abuse policy or equivalent program. The Drug and Alcohol policy requires the testing for the following situations.
    - a. Pre-employment testing
    - b. Random testing
    - c. Post-Accident testing
    - d. For Cause testing

## 7 PROJECT SAFETY

Strategic Construction Solutions and its subcontractors will perform work on this project with personnel qualified for the tasks to be completed. Compliance with all applicable federal, state, and county safe work standards will be followed per contract documents.

This Safe Work Plan fulfills the requirements of Avangrid Renewables, Subcontractor Agreement Exhibit J.1.

Daily start of shift safety message and plan of the day meeting including a stretch program will occur at the office compound prior to dispatching to site work locations.

Meeting Agenda:

- 5-10-minute safety message
- 5-minute stretch and flex

Each day of construction will begin with a daily Job Hazard Analysis (JHA). All personnel on-site will be required to attend. Areas of construction activities and that day's tasks will be discussed and safety hazards will be identified. Appropriate steps to eliminate or reduce risks or hazards will be discussed and implemented. Strategic Construction Solutions on-site management staff will also take this time to

- Review appropriate Personal Protective Equipment (PPE) required for these tasks and ensure that adequate PPE is available and utilized properly.



- Conduct a weekly all hands site safety meeting that includes all employees of each contractor for the entire site.
- Document Site HSE inspections daily with listed remedial actions.
- Uphold a proactive Audit program with at least monthly documented system audits.
- Maintain an Inspection program that includes review and monitoring of JHAs.

## 8 BASIC SAFETY RULES

1. Compliance with applicable federal, state, county, city, client, and company safety rules and regulations are a condition of employment.
2. All injuries, regardless of how minor, must be reported to your supervisor and the Safety Department immediately. In the event of an accident involving personal injury or damage to property, all persons involved in any way will be required to submit to drug testing. Do not attempt to perform medical assistance to injured personnel unless you are trained and qualified to do so.
3. Firearms, ammunition, alcoholic beverages or illegal drugs are not allowed on company property or in company vehicles at any time. When drugs are prescribed by a physician, the onsite supervisor and or safety personnel must be informed. The use or possession of illegal drugs or alcoholic beverages on the jobsite will result in immediate termination.
4. Report all unsafe condition and near misses to the on-site safety manager and or supervisor to ensure immediate corrective action is taken.
5. Compressed Gas Cylinders shall be stored in the upright position and separated by gas type. Protective cap must be installed while in storage. A physical barrier or chain will be employed to prevent the cylinders from falling. On welding units and carts – flash back arrestors must be installed and functioning.

## 9 STOP WORK AUTHORITY

1. Each Strategic Construction Solutions and Avangrid Renewables employee, regardless of rank, has the authority and responsibility to shut down any unsafe operation that poses a health and safety danger called “Stop Work Authority”. This authority extends to part-time, contract, and temporary employees.
2. Horseplay on the jobsite is strictly prohibited. Running on the jobsite is allowed only in extreme emergencies.
3. All Employees have a Right to a Safe Workplace:
  - a. Any employee who reasonably believes that an activity or condition is unsafe is expected to stop work without fear of reprisal by management or coworkers and is entitled to have the safety concern addressed prior to participating in the work. It is management’s responsibility to ensure that the Company develops a culture where the employee can exercise their right to stop work at all times.
4. Stop Work Resolution:
  - a. No worksite activity will resume until the HSE risk issue has been addressed and resolved. Intervention and resolution will be coordinated through the appropriate supervisor. It is

their responsibility to correct any issues that have resulted in an employee stopping work. The supervisor must involve the individuals who initiated the stop work in reaching a mutual agreement on the resolution or proposed actions necessary and resume work when safe to do so. Stop work interventions are documented and reviewed by management and accessed as to follow up, solutions, and improvement areas. It is important that follow-up is provided after an intervention has been initiated and closed to facilitate learning's and best practices for all employees.

## 10 SAFETY AND HEALTH TRAINING

1. All Strategic Construction Solutions employees and subcontractors will have the following safety and health training.
2. Management
  - a. Any person in a management position must possess an OSHA 30 certification or equivalent during work on the jobsite.
  - b. Any employee/subcontractor performing daily tasks shall possess an OSHA 10 certification or trade-specific equivalent training will be acceptable.
3. All training records will be accessible via electronic format and will be available on site for review by any management official or regulatory authorities.
4. In addition to required training listed above. All employees will be trained on the site-specific related training through a site orientation training. The training will be specific, deliberate, documented and result in employee and subcontractor complete understanding of risks and mitigations as well as relevant safety requirements for the jobsites specifically as well as their specific work.

## 11 JOBSITE SAFETY AUDITS

1. Strategic Construction Solutions will document all jobsite safety inspections completed via our SCS Safe app which will be stored for review as well as emailed to any person who would like information from the audit.
2. Frequency of audits.
  - a. The most senior leader assigned to the jobsite for Strategic Construction Solutions will complete (1) jobsite safety audit per month while assigned to the project.
  - b. Site Construction Managers and Site Safety Managers will complete (1) jobsite safety audit per week while assigned to the project.
3. All information received from the jobsite safety audits will be reviewed, documented and implemented across the jobsite for safety improvements.

## 12 PERSONAL PROTECTIVE EQUIPMENT

1. Hard hats will be worn by all employees on the project site at all times. The bill of the hard hat will be worn in front at all times. Alterations or modifications of the hat or liner are prohibited.

Crane operators, when in an enclosed cab, have the option of not wearing a hard hat due to the possible obstruction of view.

2. Safety glasses will be worn as the minimum required eye protection at all times. Only approved safety glasses will be worn with the ANSI Z-87 designation.
3. Clothing must provide adequate protection to the body. Shirts must have at least a tee/cap sleeve. Shirts with sleeves and long pants will always be worn. No shorts are to be worn on projects. Special clothing may be required when working in very hot, very cold or wet areas.
4. Class III Hi-Vis will be worn on the outer most layer at all times while on the jobsite.
5. Hearing protection will be provided when sound levels exceed 85 decibels (dBA) in a given area.
6. Sturdy safety toed work boots with rigid, slip-resistant soles are required. No clogs, tennis shoes or loafers are permitted.
7. FR rated clothing is required when working in or around any energized substations.

## 13 HOUSEKEEPING AND SANITATION

1. Housekeeping shall be an integral part of every job. Supervisors/foremen/lead men and employees are responsible for keeping their work areas clean and hazard-free. Clean-up is required when a job is finished at the end of the day.
2. Potable drinking water containers are to be used for drinking water and ice only. Tampering with or placing items such as soda cans and/or bottles in the water cooler will result in immediate termination. The common drinking cup is not allowed. Only disposable cups will be used.
3. Slips, trips and falls occur due to a loss of traction between the shoe and the walking surface. Below are guidelines to reduce the risk:
  - Good housekeeping
  - Reduce wet or slippery surfaces
  - Avoid creating obstacles
  - Create or maintain proper lighting
  - Wear proper footwear
  - Control individual behavior

## 14 INSPECTIONS

- a) The Color Codes listed above are in reference to the monthly inspections that need to be happening on each jobsite. At the beginning of each month SCS and any of our sub-contractors will do a site wide roll back and bring in all tools, extension cords, ladders, welding leads, harnesses, lanyards, ETC for inspection and to get re color coded. The first WORKING DAY of every month will be the jobsite roll back and inspection update and color codes.
- b) The site safety manager will ensure to get the correct colors for the rollback out to each jobsite. We will also conduct an inspection of all equipment and trucks on the jobsite that same day as well.

MONTH	QUARTER COLOR	MONTH COLOR
January	White	White
February	White	Yellow
March	White	Blue
April	Green	Green
May	Green	Yellow
June	Green	Blue
July	Red	Red
August	Red	Yellow
September	Red	Blue
October	Yellow	White
November	Yellow	Yellow
December	Yellow	Blue
DEFECTIVE	BROWN	BROWN

c)

## 15 TOOL SAFETY

1. All tools whether company or personal, must be in good working condition and inspected before use. All tools shall be used only for their intended purpose. The wooden handles of tools must be kept free of splinters or cracks and should not be loose. Defective tools will not be used. Examples of defective tools include chisels with mushroomed heads, hammers with loose or split handles, guards missing on saws or grinders, etc. Electronic equipment will be inspected prior to use. Charge all batteries with the appropriate charger. Make sure the battery is properly connected to the equipment prior to use. Do not use damaged cables. If equipment becomes wet, dry equipment thoroughly with a cloth and leave cases open to air dry
  - Electrical hand tools will be double insulated or grounded
  - Ground Fault Circuit Interrupters GFCI's must always be used when operating power hand tools
  - Each electrical hand tool and equipment will be inspected prior to use. All defective tools will be removed from the jobsite

(a) All tools will be up to date with the SCS color code template.

## 16 HEARING CONSERVATION

1. Strategic Construction Solutions will provide ear plugs at all times during construction.
2. Employees and Subcontractors shall wear hearing protection whenever the noise level exceeds 85 decibels (dBA).
3. All employees and sub-contractors are required to wear hearing protection while using impact drivers, grinders and any other noise producing equipment.
4. Decibels will be monitored by the site safety manager using a decimeter.

## 17 CONFINED SPACE

### 17.1 Scope

1. The purpose of Strategic Construction Solutions Confined Space Program is to establish procedures that will ensure workers safe entry into confined spaces and permit-required confined spaces to perform routine tasks associated with their employment. This procedure is designed to provide the minimum safety requirements in accordance with the Occupational Safety and Health Administration's (OSHA) Confined Space Standard, 1910.146 and 1926.1201.

### 17.2 Background

1. A confined space is defined as any location that has limited openings for entry and egress, is not intended for continuous employee occupancy, and is so enclosed that natural ventilation may not reduce air contaminants to levels below the threshold limit value (TLV). Examples of confined spaces include manholes, stacks, pipes, storage tanks, trailers, tank cars, pits, sumps, hoppers, and bins. Entry into confined spaces without proper precautions could result in injury, impairment, or death due to:
  - a. An atmosphere that is flammable or explosive
  - b. Lack of sufficient oxygen to support life
  - c. Contact with or inhalation of toxic materials
  - d. General safety or work area hazards such as steam or high-pressure materials

### 17.3 Requirements

1. Before Strategic Construction Solutions employees begins work at a worksite, Project or Construction Manager must ensure that a competent person identifies all confined spaces in which one or more of the employees may work, and identifies each space that is a permit space, through consideration and evaluation of the elements of that space, including testing as necessary.
2. Each affected employee must be trained prior to initial assignment to work in a confined space.
3. If the workplace contains one or more permit spaces, the client and or Strategic Construction Solutions identifies and gives notice of, a permit space must:
  - a. Inform exposed employees by posting danger signs or by any other equally effective means, of the existence and location of, and the danger posed by, each permit space; and inform, in a timely manner and in a manner other than posting, all employees, authorized representatives and the controlling contractor of the existence and location of, and the danger posed by, each permit confined space.

***Example of a sign reading "DANGER—PERMIT REQUIRED CONFINED SPACE, DO NOT ENTER" or equivalent.***



4. For each permit required confined space that Strategic Construction Solutions is made aware of Project Management will take steps to not allow employees to enter that permit required confined space. Strategic Construction Solutions must take effective measures to prevent those employees, non-employees, pedestrian, vehicle from entering that permit confined space.
5. If Strategic Construction Solutions decides that employees will enter a permit confined space, this policy will serve as a written permit space program. The written program must be made available prior to and during entry operations for inspection by employees and their authorized representatives.
6. **FOR ALL OTHER REQUIREMENTS RELATED TO CONFINED SPACE VISIT 'HS CO19' IN THE STRATEGIC CONSTRUCTION SOLUTIONS SAFETY MANUAL.**

## 18 GROUNDING REQUIREMENTS

1. Temporary Power and Lighting
  - a. All temporary power shall be grounded in accordance with codes or safe work practices
  - b. All generators, light plants and welders must be grounded before use.
    - i. All cords and cables shall be connected through a GFCI outlet.

*Note: Welders used for generator purposes must be grounded.*

## 19 VEHICLE AND EQUIPMENT OPERATION

1. Equipment Operations:
  - a. All equipment must be inspected daily. Inspection records will be retained by project supervision. Any defective equipment will be red tagged, removed from site or not used until equipment is in safe working order.
2. Vehicle Operations:
  - a. Each vehicle will have a fire extinguisher, a first aid kit, spills kit and maps with hospital locations and contact information for each. Loose items must be secured before travel and any items extending two feet beyond the vehicle shall be marked with a red flag. All vehicles should be equipped with a spare tire. Vehicles must be in good working order and driven by an authorized licensed driver – NO EXCEPTIONS.

- b. The driver and all passengers must wear seat belts. The driver is responsible for operating the vehicle in accordance with the law and following defensive driving practices.
- c. Vehicles shall be parked to allow for safe exit from the vehicle and the parking location. Vehicles shall be parked where they do not present a hazard to other traffic.
- d. No employee is permitted to ride in the bed of a truck standing up or sitting on the outside edges of a truck. Employees must be sitting down inside the truck or truck bed when the vehicle is in motion. Riding as a passenger on equipment is prohibited unless the equipment has the safe capacity for transporting personnel.
- e. 360 Walk Arounds prior to moving a vehicle is a MUST.

## 20 OVERHEAD LINE CROSSINGS

1. All cranes walking or driving under power lines shall have a spotter that travels ahead of and behind the crane.
  - a. The leading spotter shall stop prior to the crane passing under the power line to evaluate the conditions.
  - b. Spotter shall remain in view and in communication with the crane operator at all times prior to and during the passage under power lines while maintaining a safe distance.
  - c. A qualified electrical worker must be contacted and implement adequate safety measures to ensure safe travel and clearance in the event crane is unable to maintain regulatory clearance.
2. Proper signage that can be easily seen from a distance shall be placed at all overhead power line locations.
  - a. Signs must include the minimum approach distance in accordance with OSHA 1926.600 and 1926.1400
3. A warning line system (Goal Posts) shall be placed on each side of any power line crossing and maintained during the duration of the project.

## 21 HAZCOM/ SAFETY DATA SHEETS

1. An SDS is required to be on file at the worksite for all chemicals brought onsite for work activities.
2. All SDS / Right to know information can be found on the SCSSafe App or at [www.scssafe.com](http://www.scssafe.com) under the SDS tab.
3. All hazardous material brought onsite by Strategic Construction Solutions shall be accompanied by an SDS and submitted to the onsite Safety Manager for Strategic Construction Solutions.

## 22 ENERGY CONTROL (LOTO)

1. All OSHA Safety Standards concerning Lockout/Tagout of energized equipment will be followed. Strategic Construction Solutions Lockout/Tagout Policy HS B016.

- a. SCS Lock Out – Tag Out – Try Out Policy can be found in the SCS safety manual on the SCS Safe app or at [www.scssafe.com](http://www.scssafe.com) under ‘Manuals’ tab

## 23 FALL PROTECTION / WORKING FROM HEIGHTS

1. All OSHA Safety Standards will be followed for job processes requiring fall protection. Employees will be required to follow the (six) 6-foot rule for construction fall protection. Summit requires a 100% tie-off when exposed to tasks above 6’ in height. Fall protection will be inspected prior to use and any damaged harness or lanyard will be pulled from service. Failure to properly follow OSHA and Contractor’s fall protection requirements is a ZERO TOLERANCE violation.
2. All floor openings or excavations shall be barricaded on all sides to ensure employees are aware of the hazards. Floor holes shall be covered, with the covers secured and clearly marked.
3. All Fall Protection / Working From Heights safety shall follow SCS policy HS B008 in the SCS Safety Manual which can be found on the SCS Safe app or at [www.scssafe.com](http://www.scssafe.com) under ‘Manuals’ tab.

## 24 USE OF LADDERS

1. All ladders that are purchased and placed into service; or any ladders that are engineered, manufactured and installed on any of Strategic Construction Solutions equipment shall follow the requirements set forth by OSHA/ANSI specifications.
2. Inspections
  - a. All ladders shall be inspected by a competent person for visible defects on a periodic basis and after any occurrence that could affect their safe use.
  - b. Ladders shall be maintained in good condition at all times. If any issues are found at any time the ladder shall be red tagged and removed from site.
3. Ladder Safe Work Practices
  - a. Ladders shall be used only for the intended purpose for which they were designed
  - b. Ladders shall not be used by more than one person at a time.
  - c. Ladder shall not be placed in front of door openings where the door swings towards the ladder unless the door is blocked open, locked, or guarded.
  - d. Do not stand on the top two rungs or top of the step-on-step ladders.
4. All ladder safety shall follow SCS policy HS B013 in the SCS Safety Manual which can be found on the SCS Safe app or at [www.scssafe.com](http://www.scssafe.com) under ‘Manuals’ tab.

## 25 RIGGING

1. Only “Qualified Riggers” are allowed to attach any loads to a lifting hook and only “qualified operators” are allowed to operate a crane while engaged in lifting operations.
2. Rigging equipment will be free of defects and inspected daily. Only qualified riggers will be allowed to used rigging equipment.



3. Defective rigging and equipment shall not be used and shall be removed from service immediately.
4. Tag Lines shall be used unless their use creates an unsafe condition.
5. All employees and subcontractors shall stay clear of loads about to be lifted and of suspended loads. No person shall be allowed under a suspended load.

## 26 USE OF CRANES

### 26.1 Scope

1. Strategic Construction Solutions does not own or operate cranes or derricks but does hire third party companies to perform that service. This policy is designed to provide guidelines for mobile crane contractors to follow when on a Strategic Construction Solutions job site.

### 26.2 Procedure

1. Crane Contractor will comply with the manufacturer's specifications and limitations applicable to the operation of any and all cranes and derricks. Where manufacturer's specifications are not available, the limitations assigned to the equipment will be based on the determinations of a qualified engineer competent in this field and such determinations will be appropriately documented and recorded. Attachments used with cranes will not exceed the capacity, rating, or scope recommended by the manufacturer.
2. Rated load chart capacities, recommended operating speeds, special hazard warnings, or instruction, will be conspicuously posted on all equipment. Instructions or warnings affixed by the manufacture will be visible to the operator while he is at his control station or cab and operator's manual will be readily available in the cab.
3. Hand signals to crane and derrick operators will be those prescribed by the applicable ANSI standard for the type of crane in use. An illustration of the signals will be posted at the job site or on the crane.
4. The crane operator is the designated Competent Person who will inspect all machinery and equipment prior to each use, and during use, to make sure it is in safe operating condition. If any deficiency is identified, an immediate determination must be made by the competent person as to whether it constitutes a safety hazard. If the deficiency is determined to constitute a safety hazard, the equipment must be taken out of service until it has been corrected.
5. Upon inspection of manufacturer's safety devices, if a safety device is found to be inoperative or malfunctioning, the equipment shall be taken out of service until the devices are working correctly again in order to put the equipment back into service.
6. Crane Contractor will maintain a crane and its accessories in a condition which will not endanger an operator or other employees.
  - a. A thorough, annual inspection of the hoisting machinery will be made by a private third-party agency recognized by the U.S. Department of Labor. The Strategic Construction

Solutions will maintain a record of the dates and results of inspections for each hoisting machine and piece of equipment.

7. Whenever internal combustion engine powered equipment exhausts in enclosed spaces, tests will be made and recorded to see that employees are not exposed to unsafe concentrations of toxic gases or oxygen deficient atmospheres.
8. A portable dry powder fire extinguisher with not less than 10 BC rating, or higher, will be available in the cab, in the operating enclosure, or on the unit. The operator and maintenance employees will be trained in its use.
9. For power lines rated 50 kV or below, minimum clearance between the power lines and any part of the crane or load will be 10 feet.
10. The equipment operation manual provided by the crane manufacturer, matching the serial number of cranes, will be readily accessible for the Crane Operator's reference in the cab of the crane at all times.
11. Modifications or additions which affect the safe operation of the equipment may only be made with the manufacturer's written approval. The original safety factor of the equipment will not be reduced if modifications or changes are made to the equipment. Modifications or changes will be certified by a qualified registered engineer. The capacity, operation, and maintenance instruction plates, tags, or decals will be changed accordingly to reflect any modifications or changes.
  - a. Management of Change will be implemented for modified equipment – reference TF 155 Management of Change Policy
12. All crawler, truck, or locomotive cranes in use will meet the applicable requirements for design, inspection, construction, testing, maintenance, and operation as prescribed in the ANSI B30.5-1968, Safety Code for Crawler, Locomotive, and Truck Cranes. Certification records which include the date of inspection, the signature of the person who performed the inspection and the serial number, or other identifier, of the crane which was inspected shall be made monthly on critical items in use such as brakes, crane hooks, and ropes.

## 26.3 CRANE OPERATOR REQUIREMENTS AND QUALIFICATIONS

1. An equipment operator will be familiar with the equipment and its proper care. If adjustments or repairs are necessary or if any defects are known, the operator will report the needed adjustments or repairs or the defects to the responsible supervisor and, upon changing shifts, notify the next operator of the defects.
2. All controls will be tested by an operator before beginning a new shift. Any controls that do not operate properly will be adjusted or repaired before operations are begun.
3. The operator must ensure that ground conditions are firm, drained, and graded to a sufficient extent so that, in conjunction (if necessary) with the use of supporting materials, the equipment manufacturer's specifications for support and degree of level are met.
4. Prior to operation of the equipment the operator must erect control lines, warning lines, or similar barriers to prevent employees from entering the swing radius hazard zone of the rotating superstructure.

5. No minor under 18 years of age will be employed in occupations involving the operation of any power-driven hoisting apparatus or assisting in such operations by work such as hooking on, loading slings, rigging gear, etc.
6. An equipment operator will not engage in any practice that will divert the operator's attention while actually operating equipment. The operator will not eat, smoke, or read while actually engaged in the operation of the crane, or operate the crane when physically unfit.
7. Each equipment operator will be responsible for those operations that are under the operator's direct control. When there is any doubt as to safety, an operator will stop operations and consult with the supervisor before continuing work.
8. An equipment operator will not leave equipment unattended unless the operator is notified by the appointed individual that it is safe to do so. Before leaving, the operator will do all of the following:
  - a. Land any attached load
  - b. Disengage clutches
  - c. Put the controls in the off or neutral position
  - d. Open the main power switch or stop the engine
  - e. Engage manual locking devices such as house swing and boom hoist, etc. in the absence of automatic holding equipment. To ensure the crane is secured against accidental motion.
9. When there is a warning sign or lockout/tagout on the switch or engine starting controls, an equipment operator will not close the switch or start operations until the sign or lock has been removed by the person who placed it there.
10. Before closing the main power, switch or starting the equipment, an operator will put all controls in the off or neutral position and will make sure that all personnel are in the clear.
11. If power fails during operation, an equipment operator will do all of the following:
  - a. Set all brakes and locking devices
  - b. Move all clutch or other power controls to the off or neutral position
  - c. Communicate with the responsible supervisor in charge of equipment operations
  - d. If practical, and applicable, land the load under brake control
12. An operator will respond to signals only from the designated signalman using appropriate signals, except where voice communications equipment is used.
  - a. An operator will obey a stop signal from anyone. Operating signals will follow an established standard. Whistle signals may be used where one crane only is in operation.
  - b. A signal person must be used if the load travel or point of load placement is not in full view of the operator, due to site specific safety concerns, or it is determined that it is necessary by the operator or person in charge of the lift.
13. A crane will be equipped with an audible signaling device which will be actuated before traveling without a signalperson and intermittently during travel. When moving a crane, the following signals will be used:
  - a. Stop 1 audible signal
  - b. Go ahead, 2 audible signals
  - c. Back up, 3 audible signals
14. The operator, or someone especially designated, will properly lubricate all working parts of the crane.
15. When lowering a load, the operator will proceed carefully and make sure the load is under safe control.

16. When leaving the cage or cab the operator will throw all controllers to the “OFF” position and open the main switch.
17. Tools, oil cans, waste, extra fuses, and other necessary articles will be stored in the toolbox or other area and will not be permitted to lie loose in or about the cab.
18. The Local Crane Foreman will ensure that operators are familiar with the operation and care of the fire extinguishers provided.
19. A legible load rating chart will be provided at the operator station showing not less than the following information for cranes:
  - a. Load capacity relating to corresponding boom angles and operating radii for all boom lengths, jib lengths, and angles. Where optional equipment, such as outriggers or extra counterweights is provided by the manufacturer, alternate ratings will be provided in addition.
  - b. Where structural competence limits the ratings, such information will be shown on the chart.
20. When assembling or disassembling a crane a competent and qualified person must direct the work utilizing the manufacturer’s instructions and prohibitions

## 26.4 OPERATIONS NEAR A POWER LINE

1. Before beginning operations near power lines, a hazard assessment of the work site must be conducted to determine if any part of the equipment, load line or load, if operated up to the equipment’s maximum working radius in the work zone, could get closer than 20 feet to a power line.
2. If so one of the following options must be met.
  - a. Option (1) - De-energize and Ground. Confirm from line owner/operator that power line has been de-energized and visibly grounded at the work site.
  - b. Option (2) - 20-foot clearance. Ensure no part of the equipment, load line, or load gets closer than 20 feet to the power line
  - c. Option (3) – Table “A” clearance. Determine the line’s voltage and minimum approach distance permitted under Table A.

**Table A – Minimum Clearance Distances**

<b>Voltage (nominal, kV, alternating current)</b>	<b>Minimum clearance distance (feet)</b>
Up to 50	10
Over 50 to 200	15
Over 200 to 350	20
Over 350 to 500	25
Over 500 to 750	35
Over 750 to 1,000	45
Over 1,000	(As established by the utility owner/operator)

3. Any overhead wire will be considered an energized line until a representative of the owner or utility has checked and indicated otherwise.
4. Before any crane operation is started near a power line the owner or utility representative will be notified.

- a. Cranes are to be operated by qualified and authorized operators. Only trained and certified spotters and riggers will be allowed to direct the crane activities.
- b. Cranes and other equipment will not be allowed to operate near overhead electrical lines and hazards. Always check clearances and travel path prior to setting up any equipment or cranes.

## 27 EXCAVATION AND TRENCHING

1. Any excavation or trench will be governed by the trenching and excavation policy and only trained and qualified individuals will be allowed to work around any excavation.
2. Excavations for ground penetrations greater than one inch (1") shall not occur until all buried utilities are identified by Oregon 811.
  - (a) Personnel involved in excavations shall know and understand markings made by buried utility location services prior to excavations.
  - (b) Excavations for foundation or trenching activities shall be properly barricaded and shored.
  - (c) Trench inspections by a qualified individual shall be performed daily before commencement of site work activities.
  - (d) Trench inspections by a qualified individual shall be performed daily at the end of each day's work activities prior to leaving the site to ensure that excavations are properly barricaded while unattended.

**NOTE:** *The above safety statements are guidelines and reminders for the various safety topics. To obtain complete details refer to the appropriate Safety policies in the Safety Manual.*

## 28 STEEL ERECTION

1. Strategic Construction Solutions and subcontractors must conduct a pre-task analysis with the Site Safety Manager before all overhead hoisting activities take place.
2. The area of erection must be securely barricaded and if necessary, a controlled access zone may be permitted.
3. All steel erectors must wear appropriate PPE to include all fall protection provisions at heights greater than 6 feet and a face mask while welding.

## 29 CRYSTALLINE SILICA

1. Respirable Crystalline Silica policy applies to all employees who have the potential to be exposed to Respirable Crystalline Silica when covered by the OSHA Standard. The OSHA Respirable Crystalline Silica Construction Standard applies to all occupational exposures to Respirable Crystalline Silica in construction work, except where employee exposure will remain below 25 micrograms of Respirable Crystalline Silica per cubic meter of air (25  $\mu\text{g}/\text{m}^3$ ) as an 8-hour time-weighted average (TWA)
2. Strategic Construction Solutions and our Sub Contractors will have the potential for exposure during the following activities:

Construction Task or Equipment Operation	Engineering and Work Practice Control Methods	Required Respiratory Protection	
		≤ 4 hours/shift	>4 hours/shift
Stationary masonry saws	<ul style="list-style-type: none"> <li>Use saw equipped with integrated water delivery system that continuously feeds water to the blade.</li> <li>Operate and maintain tool in accordance with manufacturer's instructions to minimize dust emissions.</li> </ul>	None	None
Handheld power saws (any blade diameter) when used outdoors	<ul style="list-style-type: none"> <li>Use saw equipped with integrated water delivery system that continuously feeds water to the blade.</li> <li>Operate and maintain tool in accordance with manufacturer's instructions to minimize dust emissions.</li> </ul>	None	N95 (or Greater Efficiency) Filtering Facepiece or Half Mask
Handheld power saws (any blade diameter) when used indoors or in an enclosed area	<ul style="list-style-type: none"> <li>Use saw equipped with integrated water delivery system that continuously feeds water to the blade.</li> <li>Operate and maintain tool in accordance with manufacturer's instructions to minimize dust emissions.</li> </ul>	N95 (or Greater Efficiency) Filtering Facepiece or Half Mask	N95 (or Greater Efficiency) Filtering Facepiece or Half Mask
Handheld power saws for cutting fiber-cement board (with blade diameter of 8 inches or less) for tasks performed outdoors only	<ul style="list-style-type: none"> <li>Use saw equipped with commercially available dust collection system.</li> <li>Operate and maintain tool in accordance with manufacturer's instructions to minimize dust emissions.</li> <li>Dust collector must provide the air flow recommended by the tool manufacturer, or greater, and have a filter with 99% or greater efficiency.</li> </ul>	None	None
Walk-behind saws when used outdoors	<ul style="list-style-type: none"> <li>Use saw equipped with integrated water delivery system that continuously feeds water to the blade.</li> <li>Operate and maintain tool in accordance with manufacturer's instructions to minimize dust emissions.</li> </ul>	None	None
Walk-behind saws when used indoors or in an enclosed area	<ul style="list-style-type: none"> <li>Use saw equipped with integrated water delivery system that continuously feeds water to the blade.</li> <li>Operate and maintain tool in accordance with manufacturer's instructions to minimize dust emissions.</li> </ul>	N95 (or Greater Efficiency) Filtering Facepiece or Half Mask	N95 (or Greater Efficiency) Filtering Facepiece or Half Mask
Drivable saws for tasks performed outdoors only	<ul style="list-style-type: none"> <li>Use saw equipped with integrated water delivery system that continuously feeds water to the blade.</li> <li>Operate and maintain tool in accordance with manufacturer's instructions to minimize dust emissions.</li> </ul>	None	None
Rig-mounted core saws or drills	<ul style="list-style-type: none"> <li>Use tool equipped with integrated water delivery system that supplies water to cutting surface.</li> <li>Operate and maintain tool in accordance with manufacturer's instructions to minimize dust emissions.</li> </ul>	None	None

Construction Task or Equipment Operation	Engineering and Work Practice Control Methods	Required Respiratory Protection	
		≤ 4 hours/shift	>4 hours/shift
Handheld and stand-mounted drills (including impact and rotary hammer drills)	<ul style="list-style-type: none"> <li>Use drill equipped with commercially available shroud or cowl with dust collection system.</li> <li>Operate and maintain tool in accordance with manufacturer's instructions to minimize dust emissions.</li> <li>Dust collector must provide the air flow recommended by the tool manufacturer, or greater, and have a filter with 99% or greater efficiency and a filter-cleaning mechanism.</li> <li>Use a HEPA-filtered vacuum when cleaning holes.</li> </ul>	None	None
Dowel drilling rigs for concrete for tasks performed outdoors only	<ul style="list-style-type: none"> <li>Use shroud around drill bit with a dust collection system.</li> <li>Dust collector must have a filter with 99% or greater efficiency and a filter cleaning mechanism.</li> <li>Use a HEPA-filtered vacuum when cleaning holes.</li> </ul>	N95 (or Greater Efficiency) Filtering Facepiece or Half Mask	N95 (or Greater Efficiency) Filtering Facepiece or Half Mask
Vehicle-mounted drilling rigs for rock and concrete	<ul style="list-style-type: none"> <li>Use dust collection system with close capture hood or shroud around drill bit with a low-flow water spray to wet the dust at the discharge point from the dust collector.</li> </ul>	None	None
Vehicle-mounted drilling rigs for rock and concrete	<ul style="list-style-type: none"> <li>Operate from within an enclosed cab and use water for dust suppression on drill bit.</li> </ul>	None	None
Jackhammers and handheld powered chipping tools when used outdoors	<ul style="list-style-type: none"> <li>Use tool with water delivery system that supplies a continuous stream or spray of water at the point of impact.</li> </ul>	None	N95 (or Greater Efficiency) Filtering Facepiece or Half Mask
Jackhammers and handheld powered chipping tools when used indoors or in an enclosed area	<ul style="list-style-type: none"> <li>Use tool with water delivery system that supplies a continuous stream or spray of water at the point of impact.</li> </ul>	N95 (or Greater Efficiency) Filtering Facepiece or Half Mask	N95 (or Greater Efficiency) Filtering Facepiece or Half Mask

3. Strategic Construction Solutions and Subcontractors will provide all respiratory protection to employees for any of the above tasks.

## 30 FIRE PROTECTION

### 30.1 Fire Safety During Construction

1. Strategic Construction Solutions and all contractors will follow Oregon Fire Code Chapter 33, Fire Safety During Construction and Demolition throughout all phases of the Brickoven Solar Project. These specifications include but are not limited to:
  - (a) Controlling the sources of ignition.
    - Follow company manual on fire protection/extinguishers HSC003
    - Fill out and comply with company hot work permits before completing any hot work
  - (b) Control the spread of fire both within the structure under construction as well as the environment where work is being completed.
  - (c) Have a class D fire extinguisher within 25 feet of all hot work and 75 feet of any work being completed.
    - Other General Provisions
  - (d) Comply with any Avangrid Renewables site specific provisions to include designated smoking areas, waste disposal, cutting and welding operations, use of portable heaters, and storage of flammable and combustible liquids.

## 31 ENVIRONMENTAL CONCERNS AND PROCEDURES

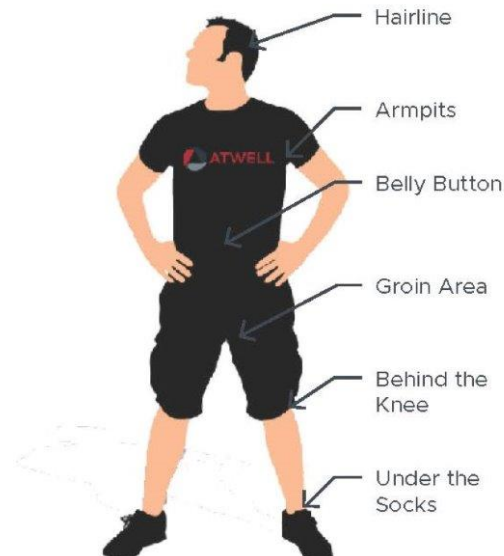
### 31.1 Weather

1. **Heat Stress:** Heat stress can take several forms and it results from working in a hot environment. When the body is unable to cool itself by sweating, heat induced illnesses such as heat stress, heat exhaustion, or heat stroke can occur. All employees shall have access to adequate drinking water throughout the workday. In extreme heat, it is recommended to drink electrolytes in addition to water. When beginning work in a hot environment it might be necessary to take additional breaks until the employee is acclimated to the climate.
  - a. **Please refer to Heat Illness Prevention Policy HSB006 in the SCS Safety Manual for further instructions.**
2. **Cold Stress:** Cold-related illnesses can slowly overcome a person who has been chilled by low temperatures, brisk winds, and wet clothing. Frostbite usually affects the fingers, hands, toes, feet, ears, and nose. Employees should dress in layers and wear clothing to guard against cold, wet, and windy conditions. Take frequent short breaks to warm-up as needed.
3. **Lightning:** Avoid working during thunderstorms. Follow the 30/30 Rule – seek shelter if the “Flash-To-Bang” delay (length of time in seconds between a lightning flash and its subsequent thunder) is 30 seconds or less, and remain under cover until 30 minutes after the final clap of thunder. During a thunderstorm, seek shelter in a building with plumbing and electrical wiring or vehicle with a metal top. Vehicles with non-metal tops/enclosures such as fiberglass, cloth or plastic are not considered effective protection against lightning. Avoid open, bare areas. Do not cross water bodies.



4. **Dust Storm:** In the event a dust storm develops in the work area all employees will take shelter in buildings or vehicles and wait for the dust to subside. Do not drive-in dust storms. If driving pull to side of road with running lights and headlights left in the on position to provide visibility to other motorists.
5. **Tornadoes:** If outdoors seek shelter in a culvert, ditch, or cave. Lie flat in a ditch and cover your head. In a building, the best shelter is inside the basement or interior room on the lowest floor.
6. **Ultraviolet Radiation:** When working outdoors employees are subject to ultraviolet radiation – even when the temperature is low. To prevent skin damage due to sun exposure, keep your skin covered. Wearing pants, long sleeve shirts and hats can assist in preventing skin damage. Sunscreen with an SPF factor of at least 30 is recommended for areas that are not covered by clothing.
7. **Wildlife and Endangered Species**
  - a. **Ticks:** Ticks like to hide in warm, moist, and dark places so make sure to check armpits, under the hair, groin area, behind the knees, under your sock line and your belly button. Be safe and take appropriate measures to protect yourself from ticks. Avoid playing near long grass, wear long socks, wear tick repellent on your skin or clothes and do tick checks when you come back inside. Grab the tick with tweezers as close as you can to his mouth and your skin. Do not grab the tick with your fingers by its body. This could squeeze infected fluids from the tick into you. Gently pull the tick straight out without squeezing or twisting the tick. Twisting the tick could dislodge its head leaving it in you. Do not use chemicals or a match either as this may cause the tick to regurgitate infected stomach contents into you. Wash the area with warm soapy water and peroxide. You can save the tick in a plastic bag and send it to labs to be tested for infections.

**MAKE SURE TO CHECK YOURSELF FOR TICKS!**



- b. **Snakes:** Snakes are typically found in underbrush and tall grassy areas. Most snake bites occur below the knee, on the hand or on the forearm. It is recommended that employees use gauntlet gloves, high-top leather boots, and extra care when walking through underbrush or tall grass. If you are bitten by a snake:

- Stay calm. Notify co-workers to help you seek medical attention. Seek medical attention from the nearest medical facility.
  - Immobilize the affected limb, keeping the bitten part below the level of the heart. Even if the snake is not venomous, excellent wound care is required. A tetanus booster shot is needed if the employee has not had one within the last 5 years.
  - Do not cut the bite open and suck out the venom. Do not apply ice, cold packs, or Freon spray.
  - As with all puncture wounds, snakebites carry a high risk of infection, whether or not venom is injected. Clean the wound carefully with soap and water.
- c. **Bees and Other Stinging Insects:** Bees, wasps, and other stinging insects may be encountered almost anywhere and may present a serious hazard, particularly to people who are allergic. Carry a kit if you have had allergic reaction in the past and inform your crew leader (typically Supervisor/foreman/lead man). Watch for and avoid nests while working. If stung and the stinger is present, remove it carefully with tweezers. Wash and disinfect the wound, cover it, and apply ice. Watch for an allergic reaction and seek medical attention if a reaction develops.
- d. **Endangered Species:** For a list of endangered species in the state of Oregon please visit <https://www.fws.gov/oregonfwo/promo.cfm?id=177175701>

## 32 REPORTING OF INJURIES

1. All employees will be held accountable for filling out a First Report of Injury Form immediately after an injury occurs, even if medical treatment is not required (Notice must be made at or near the time of the injury). Avangrid Renewables will require notification no later than 1 hour after the incident. Employees must report the injury to their supervisor/project manager. A casual mentioning of the injury will not be sufficient. Employees must let their supervisor know immediately:
  - a. How they think they hurt themselves
  - b. What they were doing at the time
  - c. Who were they working with at the time?
  - d. When and where it happened
  - e. Other pertinent information that will aid in the investigation of the incident. Failure to report an injury **immediately** (meaning at or near the time of the injury) is a violation of the Safety Policy, and may result in immediate termination, in accordance with company policy.
  - f. Emergency Contact Information Sheet (See Above) will be posted onsite for supervisors and employee's reference.
2. A "First Alert" must be sent to Avangrid Renewables Site Manager within 1 hour of the incident containing the following information:
  - a. Date
  - b. Time
  - c. Contractor Involved
  - d. Exact Location
  - e. Synopsis of the incident
  - f. Immediate action taken after the incident
    - i. THIS FORM CAN BE FOUND ON THE SCS SAFE APP or at [www.scssafe.com](http://www.scssafe.com) under 'Projects-→Brickoven-→Incident Notification'

3. All incidents and information shall be input on the SCS Safety app or at [www.scssafe.com](http://www.scssafe.com) under the 'INCIDENTS' tab. Here you will find more information about how to report incidents and what forms to fill out.

## 33 NOTIFICATIONS

### 1) Non-Serious Injuries, Illness, and or Near Miss

After an incident where an employee is injured or involved in a Near Miss, notification of Supervisor/Project manager will happen **immediately**. The supervisor and employee will use the Occupational Clinic/Hospital listed on the Emergency Contact Information Sheet (See Above). Any employee who is taken to the hospital or clinic will be accompanied by a member of supervision.

#### a. Serious Injury or Death

In the event of a serious incident, immediate notification of:

1. Supervision, Safety Department and the Strategic Construction Solutions Executive Management Team after the incident is required.
2. Regulatory Agency Notification if applicable (OSHA, DOT, etc.) All communication with regulator agency will be handled by the Director of Safety or a member of the Executive Management Team.
3. Other steps to be taken are:
  - a. Statements from witnesses shall be taken
  - b. Statements are to be signed by witnesses and should include the time and date
  - c. Photographs of the area where the incident occurred and any other relevant items are to be taken
  - d. The Director of Safety will assist in the investigation
  - e. Root-cause investigation meeting will be organized and held within a reasonable time after incident.
  - f. Final report will be reviewed with Executive Management team prior to issuance to Clients and or regulatory agencies.
  - g. Responsible Contractor(s)
  - h. Responsible Manager

### 2) In Case of Inspection by OSHA Inspector

The Supervisor/foreman/lead man must notify the Director of Safety and Avangrid Renewables Management that an OSHA Inspector is on the jobsite. It is the responsibility of all employees to make the inspector's visit on the jobsite as pleasant and timely as possible.

### 34 ENFORCEMENT OF SAFETY POLICY

Safety concerns shall be immediately addressed with any employee, subcontractor, or anyone on the jobsite violating the safety rules or regulations.

- 1) Any violation of safety rules can result in removal from the project site
- 2) Failure to use fall protection or for failure to report a job injury (at the time of the injury) may result in immediate removal from the project site
- 3) Failure to comply with any of the zero tolerance rules listed below will result in immediate removal from the project site

It is understood that Atwell-SCS is not restricting itself to the above rules and regulations. Additional rules and regulations as dictated by the job will be issued and posted as needed.

Strategic Construction Solutions enforcement actions are referenced below:

ZERO TOLERANCE – IMMEDIATE REMOVAL & BARRED FROM SITE
Fall Protection Hazard Violation – 6’ rule
Excavation Hazard Violation – 4’ rule
Lockout/Tagout Program Violation
Life Threatening Energized Electrical Violation
Confined Space Violation
Willful Violation of any OSHA Standard

### 35 SITE SANITARY FACILITIES

Strategic Construction Solutions will utilize existing site sanitary facilities throughout the project duration per contract requirements, including portable restrooms, hand wash stations and waste disposal containers at the direction of Avangrid Renewables. Good housekeeping and site cleanup practices will be maintained by both Strategic Construction Solutions and subcontractors so that the project site is clean and presentable at all times.

### 36 ATTACHMENTS/FORMS

- 1) Site Safety Meeting Sign Up Sheet



