



updated 4/20/23

FACT SHEET: STRONG'S MARINE DEVELOPMENT PROJECT ON MATTITUCK INLET

The Project: Strong's Marina is proposing building two over-sized boat storage buildings, 52,500 sq ft and 49,000 sq ft, that will each stand 55' tall (45' building + 10' elevation). The project, located at 3420 Mill Road, Mattituck, is currently planned to impact a 33 acre wooded lot on Mattituck Inlet that is adjacent to the public woodlands known as Mill Road Preserve.

The project will:

- Cut down over 630 mature trees (12.8" average diameter; 50-80' average height)
- Haul away a hill of sand (134,000 cu yds) over narrow local roads, exacerbating an already unsafe traffic issue
- Replace nearly four acres of a native forest with enormous warehouse buildings for heated yacht storage
- Reduce the elevation of the property from ~50' to 10', then install an 875' -long concrete wall more than 30' high to hold the slope cut
- Store 8,000 gallons of propane in four 2,000 gallon tanks
- Remove a natural feature that protects against the effects of climate change
- Expose the Mill Road Preserve by eliminating its natural buffer and exposing the edge

The Southold Planning Board has required an environmental impact study before the project can go forward.

Community Objections: The project has been widely questioned by community and environmental groups, including Save the Sound, Group for the East End, and the North Fork Environmental Council. In addition, community members have formed a grass-roots organization, Save Mattituck Inlet, which seeks to protect and preserve the Mattituck Inlet and the surrounding ecosystem.

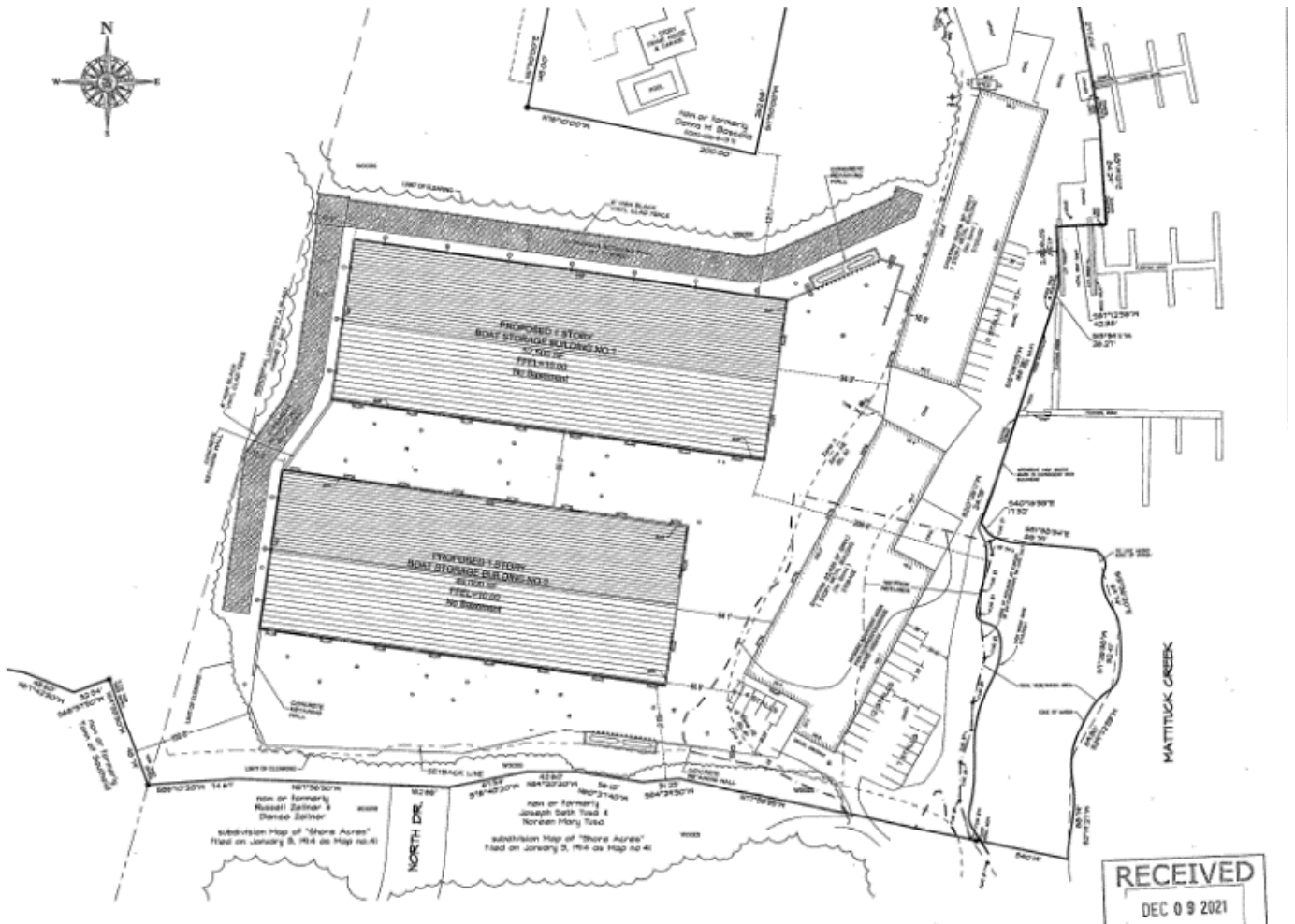
Save Mattituck Inlet supports the Southold Planning Board's decision to require an environmental study. Its members -- more than 200 families and growing -- are among the more than 75 local residents who submitted their concern to the scope of the draft environmental impact statement.

Community concerns include:

- Potential impact on coastal resilience of excavating the hillside and destroying the forest areas,
- Surface water pollution,
- Disruption of ground water wells, flooding, run-off, erosion,
- Destruction of plant and animal ecosystems,
- Diminishment of the aesthetic character of the community,
- Pedestrian safety during the construction,
- Destruction of local roads and impacts to historic structures due to vibrations made by oversized trucks,
- Impact on resale property values as residential community becomes a disruptive commercial hub.

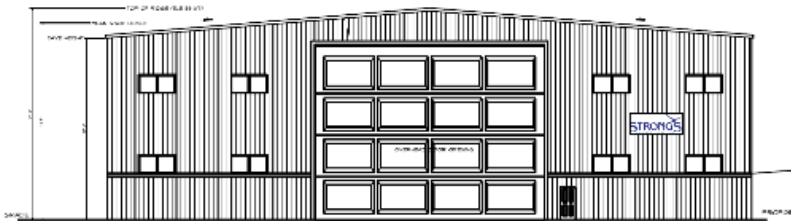
LATEST UPDATE: Southold Planning Board received a revised copy of the Draft Environmental Impact Statement on 12/1/22 and deemed it adequate for public review on 2/27. **There will be a public hearing on 5/15/23.**

THE PLANNING BOARD WILL BE ACCEPTING COMMENTS PRIOR TO THE PUBLIC HEARING. PLEASE CHECK OUT OUR WEBSITE AND JOIN OUR MAILING LIST FOR MORE INFORMATION



The proposed buildings are Warehouses

– not “potato barns”



About Save Mattituck Inlet: Save Mattituck Inlet, established in 2020, aims to ensure that the community’s voice is active in the oversight of development of and around the Inlet by raising awareness and advocating for transparent and responsible development that considers the impact on the economy, the ecology, and the local quality of life.

Contact: Anne Sherwood Pundyk, 917-612-7253, and Stephen Boscola, 631-830-3082.
Email: SaveMattituckInlet@gmail.com

