



ONE

SHENTON

珊顿一号



动感都市生活尽在滨海湾

VIBRANT CITY LIVING IN DOWNTOWN MARINA BAY

可立即入住

READY FOR IMMEDIATE OCCUPATION

## 滨海湾金融区地标级公寓

珊顿一号坐落于新加坡现有中央商业区与滨海湾新城区之间。超凡、便利的地理位置为您带来毫不停歇的城市律动，活力四射的都会生活尽在新加坡这动感的城市之中。楼房外墙上的皇冠设计正标志着珊顿一号君领群雄；金银楼塔双双伫立于城市的五光十色之中，雅致精美的公寓亦仿佛带您进入一座金碧辉煌的殿堂。

## LIVE IN THE HEART OF MARINA BAY FINANCIAL DISTRICT

One Shenton is the landmark residence in the vibrant global city of Singapore. Standing tall in the city centre at Shenton Way, its iconic crowns adorn the coveted position between the existing central business district and exciting new downtown at Marina Bay. Twin gold and silver towers, with exquisite apartments presenting panoramas of opulence, truly paint a remarkable silhouette against the city's glittering skyline.



## 公寓设施

珊顿一号的个性化设施不仅全面完善，令您喜出望外之余，更让您尽享无与伦比的品质与奢华。遍布四层楼宇美轮美奂的设施包括了大堂楼层 (Lobby Level - 第1楼) 的接待处与餐饮服务，会所楼层 (Club Level - 第8楼) 的50米泳池、休闲凉亭、聚会厅等设备，以及位于健身楼层 (Wellness Levels - 第24与25楼) 的空中健身房、水疗花园、空中休闲厅等设施。

## FACILITIES

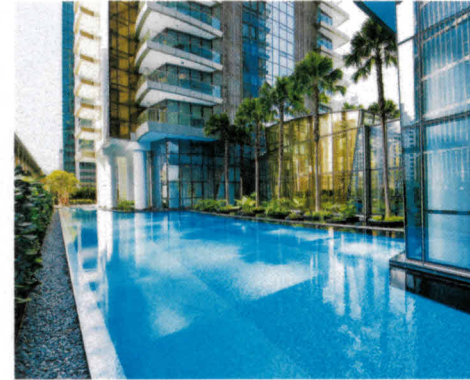
One Shenton's splendid array of personalised facilities will treat you to incomparable luxury and excellence. Spread across 4 exquisite levels, you'll find the concierge and dining services at the Lobby Level (Level 1), pools and recreational facilities such as a 50m Lap Pool, Cabana, Function Rooms on the Club Level (Level 8), and a breathtaking Sky Spa Garden and Sky Lounge on the Wellness Levels (Level 24 & 25).



在时尚的空中健身房舒适健身  
Work out in style at the sky gym



亲临水疗花园全情舒缓身心  
Relax in the spa garden



50米长泳池让您沉浸其中，尽享奢华  
Bask in luxury by the 50m lap pool

## 室内

无论是舒适的3卧室单位或是豪华的空中别墅，珊顿一号每一间单位都是精心打造，华丽尽显加上让人心旷神怡的城市与滨海景色，绝对是您梦寐以求的都市雅居。

## INTERIOR

From gracious 3-bedroom apartments to ultra-luxurious Sky Villas, every apartment has been detailed and conceived to ensure the best discerning lifestyles. Plus the magnificent views of the city skyline and sea, One Shenton truly takes city living to greater heights.



图片仅供参考  
For illustration only

尽享宽敞舒适的豪华生活  
Indulge in spacious modern comfort



图片仅供参考  
For illustration only

设备完善的烹煮天堂  
Your fully-equipped gourmet kitchen

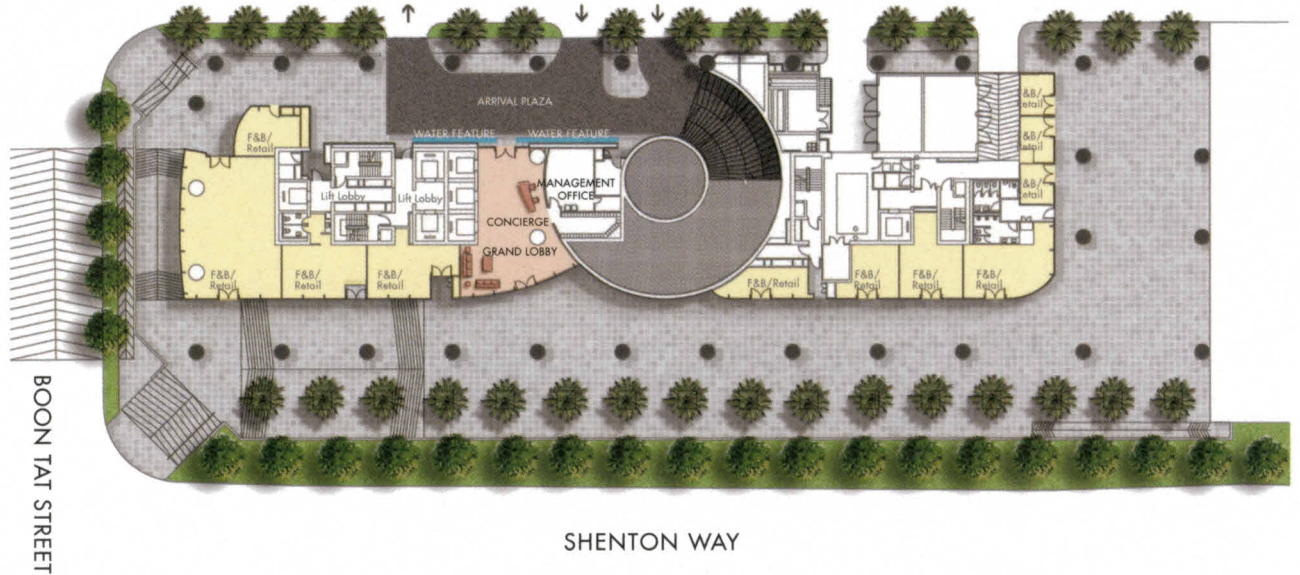


图片仅供参考  
For illustration only

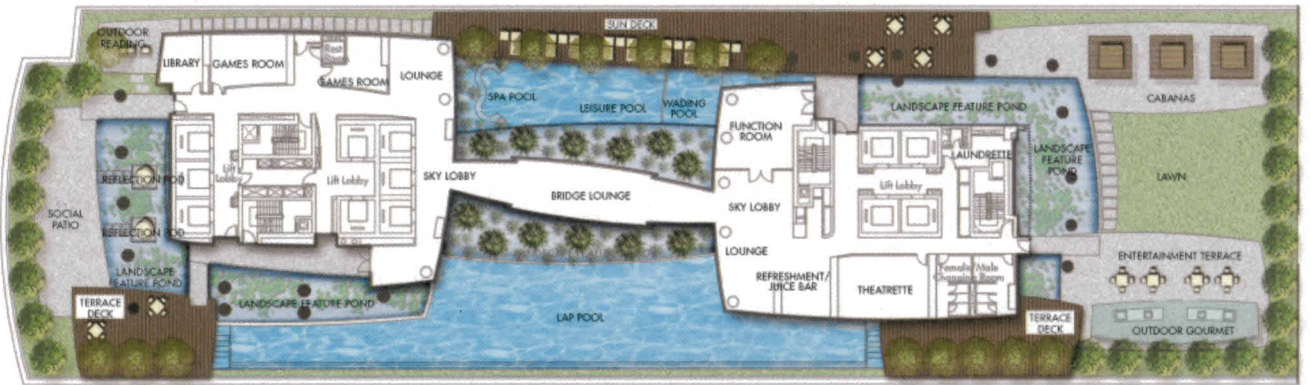
华丽尽显，宽阔舒适  
Experience the splendour of space

# 平面图 SITE PLAN

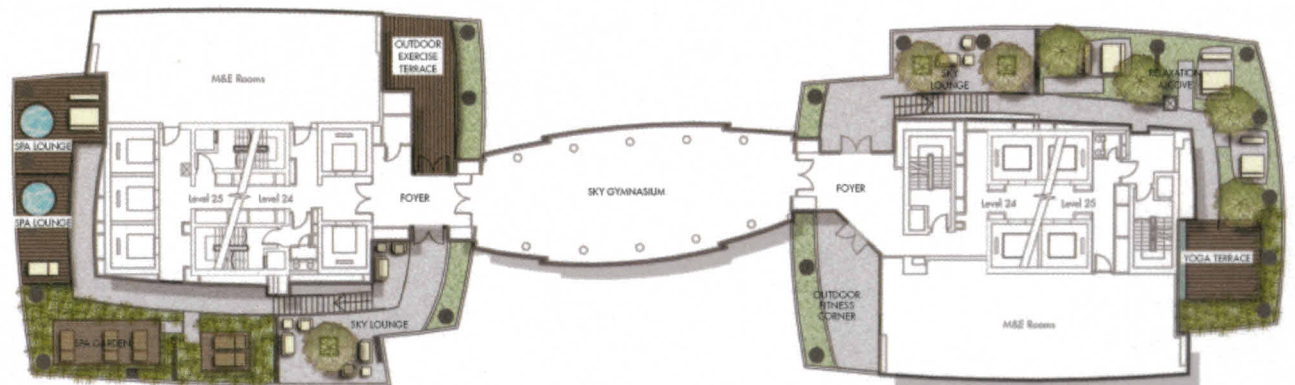
大堂楼层 (第1楼)  
Lobby Level (Level 1)



会所楼层 (第8楼)  
Club Level (Level 8)



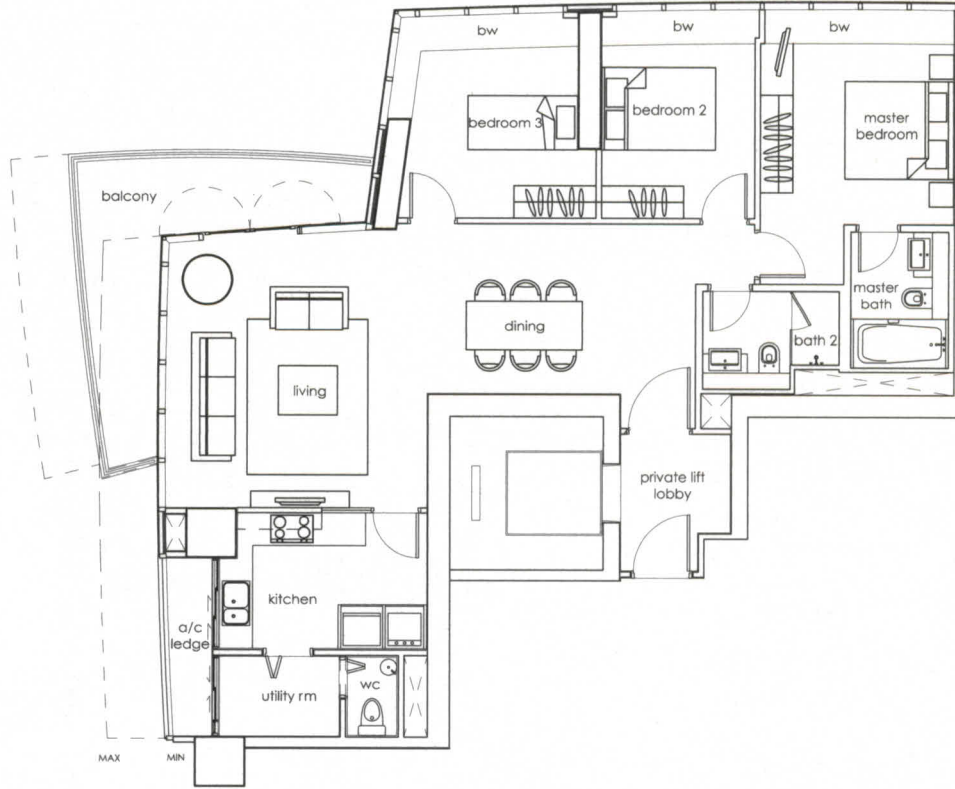
健身楼层 (第24与25楼)  
Wellness Levels (Level 24 & 25)



## 3-卧室公寓 3-BEDROOM APARTMENT

TYPE A-3-b

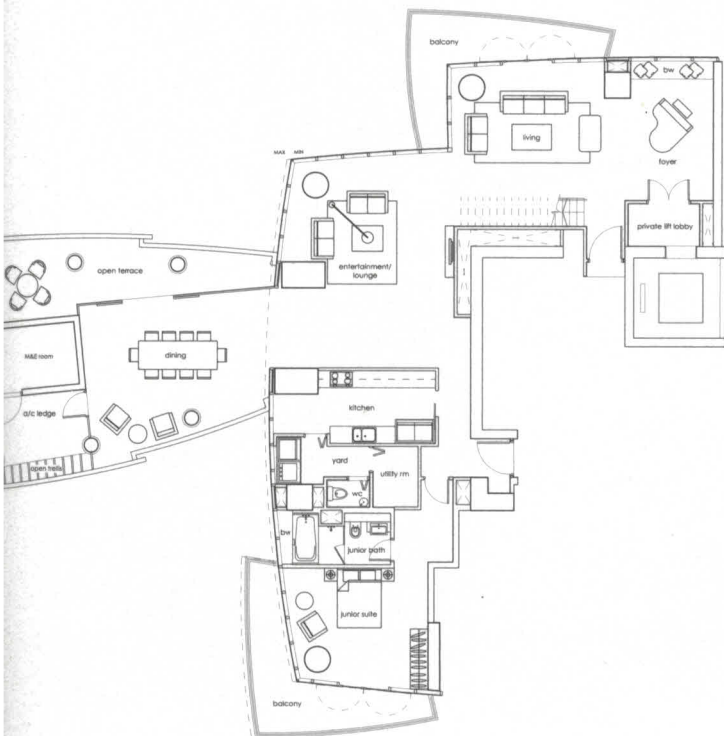
#15-02	: 143 sq m (1,539 sq ft)
#40-02	: 147 sq m (1,582 sq ft)
#41-02	: 146 sq m (1,572 sq ft)



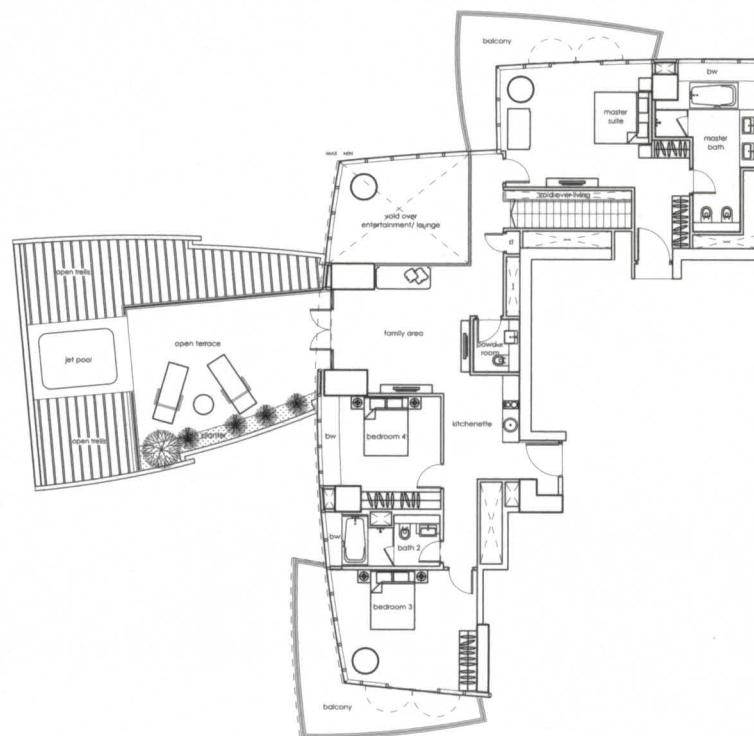
## 空中套房 SKY SUITE

TYPE B-ss-b

#16-08	: 524 sq m (5,640 sq ft)
#33-08	: 525 sq m (5,651 sq ft)



跃层套房单位下层 (第16/33楼)  
Lower Level (Level 16/33)



跃层套房单位上层 (第17/34楼)  
Upper Level (Level 17/34)

## 地理位置

坐落于滨海湾金融区，珊顿一号是新加坡城市缩影的最佳呈现。毗邻的滨海湾即是一个热闹绚丽、绘声绘影的海滨胜地，举凡休闲娱乐、商业活动和文化体验皆融汇其中，为您的生活增添万般姿采。滨海湾金沙综合娱乐城及滨海湾花园只是几步之遥，而数分钟即达滨海艺术中心、新达城与滨海广场等购物商场，完善的设施一尽齐备。市中心地铁站、兴建中的珊顿大道地铁站和中央商业区也近在咫尺，让您尽享各种娱乐及在顷刻间同全球业务接轨。

## LOCATION

Located in the heart of Marina Bay Financial District, One Shenton is the of city living. The revitalised Marina Bay is a premier waterfront destin offers seamless lifestyle options, business ideas and rich cultural exp Surrounded by a myriad of amenities, One Shenton is only a short s Marina Bay Sands Integrated Resort, Gardens by the Bay, Esplanade – on the Bay and near shopping malls such as Suntec City and Marina The Downtown MRT station, upcoming Shenton Way MRT station and Business District (CBD) are also a mere stone's throw away, providin access to the city's entertainment and business highways.



滨海湾金沙综合娱乐城的精彩活力。  
Spectacular splendour awaits at the Marina Bay Sands Integrated Resort.



步入滨海湾花园，置身于一片青葱翠绿之中，感受奇异花卉的芬芳艳丽。  
Marvel over the beauty of nature as you surround yourself with exotic flora at Gardens by the Bay.



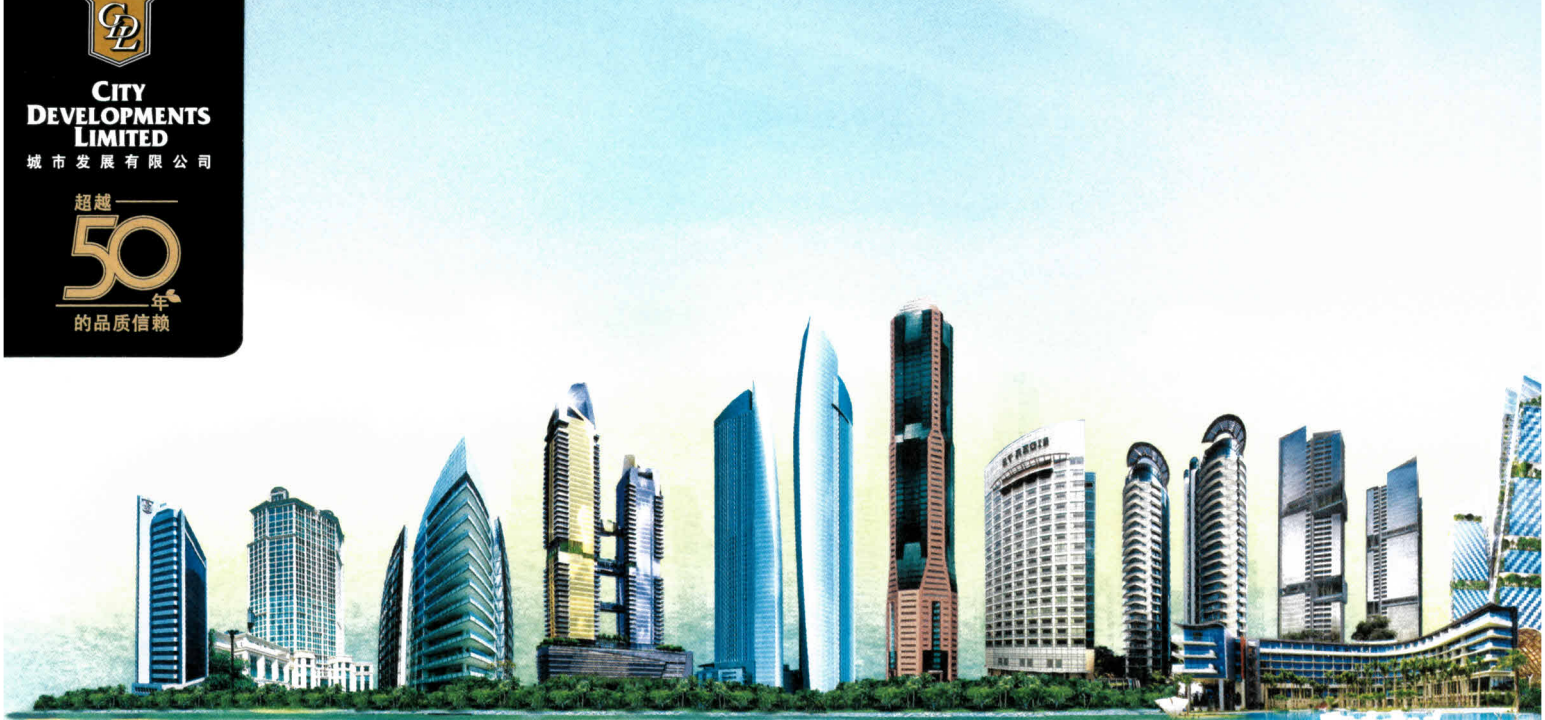
位于滨海湾市街赛道振奋人心的一级方程式夜间赛车尽在眼前。  
Catch the exhilaration of the Formula 1 Night R at Marina Bay Street Circuit.



**CITY DEVELOPMENTS LIMITED**

城市发展有限公司

超越  
**50**  
年  
的品质信赖



城市大厦 City House	国敦河畔大酒店 Grand Copthorne Waterfront Hotel Singapore	升涛舫 The Oceanfront @ Sentosa Cove	珊顿一号 One Shenton	滨海舫 The Sail @ Marina Bay	共和大厦 Republic Plaza	瑞吉酒店 The St. Regis, Singapore	凯林豪庭 Cliveden at Grange	盛峰 Echelon	新加坡圣淘沙湾 W酒店 W Singapore - Sentosa Cove
--------------------	--	---	---------------------	---------------------------------	------------------------	-------------------------------------	-------------------------------	---------------	---

## 新加坡房产先驱 优良信誉始于1963年 SINGAPORE'S TRUSTED PROPERTY PIONEER SINCE 1963

作为新加坡卓越的发展商之一，于1963年创建的城市发展有限公司已建造3万4千余间豪华公寓，成就卓越业绩。著名地标如滨海舫、珊顿一号及瑞吉雅居，为新加坡的天际线又添几分璀璨。城市发展有限公司对卓越、革新以及精工的不懈追求，使该公司成为新加坡现今规模最大的房企之一。城市发展有限公司是家驰名远扬的国际公司，它旗下的千禧国敦酒店集团在亚洲、中东、北美洲及新西兰/澳大利亚各地的25个国家亦占有一席之地。

As a leading property developer, City Developments Limited (CDL) holds an impressive track record over 34,000 luxurious and quality homes catering to a wide range of market segments. With renowned landmarks including The Sail @ Marina Bay, One Shenton and St. Regis Residences, Singapore name, CDL has made a distinctive imprint on Singapore's skyline. Its enduring spirit of innovation, craftsmanship and excellence has made CDL one of Singapore's largest landlords today. CDL is also a global company with a prominent presence in 25 countries across Asia, Europe, Middle East, North America and New Zealand/Australia through its dynamic hotel arm, Millennium & Copthorne Hotels p