A vibrant, futuristic city street at night, illuminated by neon lights and digital billboards. Several glowing, semi-transparent digital interfaces are overlaid on the scene, featuring various data visualizations, charts, and a central circular graphic with the letters 'AI' in the middle. The overall atmosphere is high-tech and cybernetic.

# AI Readiness Assessment: Paving the Way for Ethical Transformation

This presentation explores key dimensions of organizational AI readiness, including strategy, infrastructure, data, governance, talent, and culture. We'll examine critical factors to help guide your organization's successful AI integration.

**by Brian M Green, MS  
Chief AI Ethics Officer & Strategist  
Health-Vision.AI, LLC**



# Organizational Readiness Assessment

Before implementing AI solutions, organizations should evaluate their readiness across key dimensions:

## 1 Infrastructure Assessment

Evaluate technical infrastructure, computing resources, and data storage capabilities

## 2 Data Readiness

Assess data quality, availability, governance policies, and compliance measures

## 3 Talent & Skills

Review current workforce capabilities and identify skill gaps in AI/ML competencies

## 4 Business Alignment & Fit

Gauge organizational culture's openness to digital transformation, AI adoption and workflow fit

## 5 Budget & Resources

Evaluate financial readiness and resource allocation for AI initiatives, scaling, and growth

## 6 Change Management

Assess leadership support and change management capabilities and needs for AI transformation



# Solution Selection – Do You Need AI?



## ML/Analytics

Pattern recognition and statistical analysis to identify business trends, customer behaviors, and market opportunities.

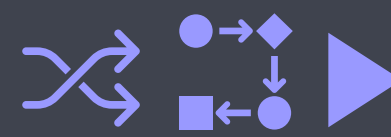
**Ideal for data-rich problems requiring insights, like customer segmentation.**



## Predictive AI

Leverage historical data to forecast sales, detect fraud, anticipate equipment maintenance, and optimize inventory levels with machine learning models.

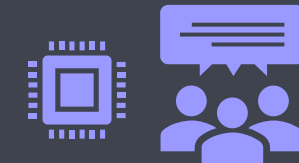
**Ideal for demand forecasting.**



## Robotic Process Automation (RPA)

Streamline workflows by automating routine tasks like data entry, report generation, and document processing.

**Best for structured, rule-based processes and "back office" workflows.**



## Generative AI

Transform business operations with AI-powered content creation, code generation, product design, and customer service automation.

**Suited for creative and complex tasks with appropriate guardrails.**



# Strategic AI Deployment

1

## Define Strategy

Develop a clear, measurable AI strategy with designated leadership.

2

## Measure Impact

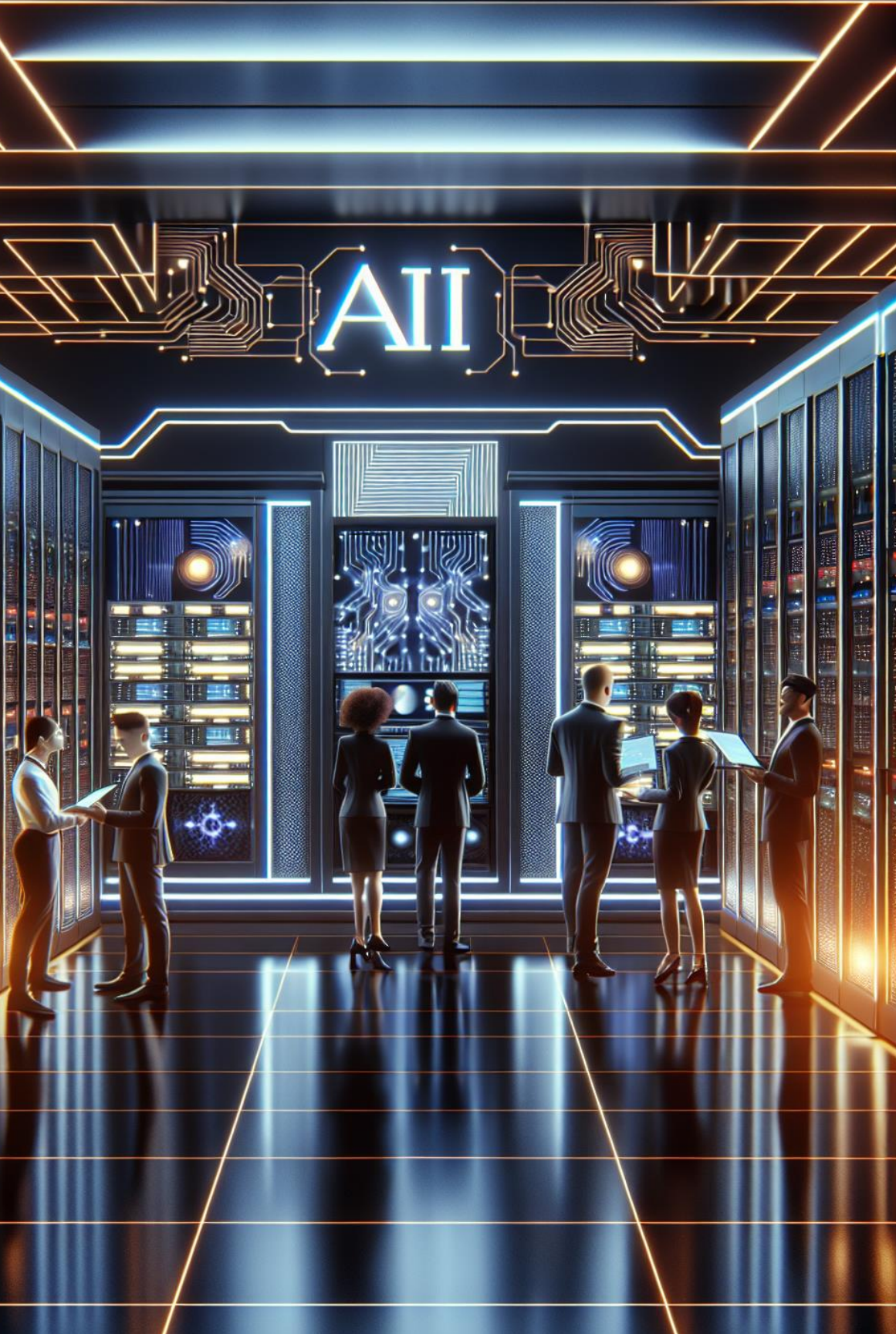
Implement processes to evaluate AI deployment effectiveness.

3

## Secure Funding

Establish sustainable financial strategies for AI initiatives.





## Deeper Dive: Assessing Resource Needs

Successful GenAI integration requires careful planning and allocating key resources across multiple areas. We help you plan these essential components when building your AI infrastructure:

### **AI Tools**

Identify necessary GenAI platforms and software for implementation. Consider factors like:

- Cloud computing infrastructure requirements
- API integration capabilities
- Data storage and processing capacity
- Security and compliance features

### **Training Programs**

Develop comprehensive AI education for employees at all levels, including:

- Basic AI literacy workshops
- Role-specific technical training
- Ethical AI use guidelines
- Ongoing skill development support

### **Governance Committee**

Establish a team to oversee AI initiatives and ensure compliance, focusing on:

- Policy development and enforcement
- Risk assessment and mitigation
- Performance monitoring
- Stakeholder communication

Understanding and securing these resources early in your AI journey will help ensure a smooth implementation and sustainable long-term success. Regular assessment and resource allocation adjustment is crucial as your AI capabilities evolve.



# Fostering an AI-Ready Organizational Culture

Creating a culture that embraces artificial intelligence requires a systematic approach that cascades through all levels of the organization.

## Board Support

1

Secure high-level receptiveness to AI-driven changes. Build understanding among leadership, knowledge about AI's strategic importance, ROI potential, and competitive necessity. Ensure allocation of necessary resources and long-term commitment to AI initiatives.

## Leadership Engagement

2

Ensure management teams champion AI initiatives. Develop AI literacy among executives, establish clear AI governance structures, and align incentives with AI adoption goals. Leaders must actively demonstrate commitment through communication and resource prioritization.

## Employee Adoption

3

Cultivate widespread acceptance of AI technologies. Create comprehensive training programs, address concerns about AI's impact on jobs, and highlight success stories. Foster an environment where employees feel empowered to experiment with AI tools and contribute ideas for implementation.

## Change Management

4

Implement comprehensive plans for AI integration. Design clear communication strategies, establish feedback mechanisms, and create support systems for employees during the transition. Monitor adoption metrics and adjust approaches based on real-time feedback.

The success of AI initiatives depends on creating a supportive organizational culture. By following a systematic approach, organizations can build the foundation for successful AI adoption while maintaining employee engagement and satisfaction. Regular assessment and adjustment of these elements ensures sustainable AI transformation.

# Milestone 1: Initial Organizational Assessment



# AI Readiness Assessment & Planning Tool


## Overview and Instructions



Self Assessment is to be completed by each assigned individual stakeholder, consider each question and select your rating from the drop-down (color coded) menu in Column E

Milestone 1	Domain Groups	These may be pre-assigned		
	Data & Models	Data infrastructure, governance, ML analytics, and AI models		
	Leadership & Gov...	Leadership readiness for AI, AI governance framework and ethics		
	Legal & Compliance	Legal and compliance issues, internal and external		
	Operations & Plan...	Operations, AI processes, people training and stakeholder engagement		
	Tech & Security	Tech stack, infrastructure, capabilities, and security of systems		
	Rating Scale	Score	Description	
	Do not have	0	Do not currently have this item or capacity, or not sure of status	
	Discovery	1	In discovery phase right now, this may include planning meetings or internal discussions	
	Developing	2	Developing this item or capacity, this may be early stages or later stages, but it is still a WIP	
	In Place, Revising	3	Basic functionality is in place, or was developed for another purpose and can be adapted, revisions are WIP	
	Implemented	4	The item or capacity exists and has been implemented, or post-production	
	Depending upon the number of stakeholders involved in the assessment, specific domain groups may be assigned for rating, or leadership may be asked to assess all items. Consultants will review and complete the same assessment tool. Final ratings will be computed as average ratings for all items in the domain group. Final average score will determine overall stage of readiness.			
After the Readiness Assessment is Completed, prioritization and strategy planning, along with preliminary Roadmap is developed.		Post-Assessment Planning and Prioritization - STAGE for Product / Project Roadmap		
		Discov...	Discovery of necessary project or product elements, includes user stories	
		Ideatin...	Ideation and planning includes wireframes, POC or prototype and draft documents	
		Devel...	Stakeholders agree on MVP, teams develop detailed project and product plans	
		Testin...	Product or workflow processes are committed to final draft or staging, testing, review & iterative	
		Deplo...	AI Products or workflow integrations are deployed, with governance & guardrails in place	
As preliminary Roadmap is developed, leadership will determine what Exec leads which domain/subdomain items and assign those out as appropriate once the prioritization stage is agreed to by team		Prioritization Stage for Roadmap		
		Now	Usually will be priorities for the first 3 months after Roadmap is approved	
		Next	3-9 months after the Roadmap is approved and the project is initiated	
		Future	12-24+ months after Roadmap is approved, this is revisited Quarterly	



Table1 						
Tr	Question	Domain	Tr	Subdomain	Rating	Stage / Domain
1.10	Do you have robust data governance policies that address the use of Gen AI?	Data & Models		Data Gov Policies	Do not have	0
1.20	Do you have a plan to ensure the quality and accuracy of data used in Gen AI applications?	Data & Models		Data Quality	Discovery	1
1.30	Are your data privacy policies updated to reflect the use of Gen AI tools?	Data & Models		Data Privacy	Developing	2
1.40	Do you have systems in place to monitor the effectiveness of Gen AI use in education?				Do not have	0
1.50	How are you ensuring the safety and security of student data when using Gen AI?				Do not have	0
2.10	What educational outcomes are you tracking to measure the effectiveness of Gen AI use?				Discovery	1
2.20	How are you integrating Gen AI into your curriculum and teaching practices?				Developing	2
2.30	Have you provided professional development for teachers on the effective use of Gen AI?				Discovery	1
2.40	How do you track compliance with Gen AI use policies, and what are the consequences for non-compliance?	Leadership & Governance		Compliance Tracking	Discovery	1
2.50	Are there ethical guidelines in place for the use of Gen AI by students and staff?	Leadership & Governance		Ethical Guidelines	Discovery	1
2.60	How do you ensure equitable access to Gen AI tools for all students?	Leadership & Governance		Equity	In Place, Revising	3
2.70	What mechanisms do you have for gathering feedback from stakeholders on Gen AI policies and practices?	Leadership & Governance		Feedback Mechanisms	Developing	2
2.80	How often do you review and update your Gen AI strategies based on feedback and new developments?	Leadership & Governance		CQI-AL integrations	Do not have	0
	How do you ensure transparency in the use of Gen AI?					

**WILL BE CUSTOMIZED  
TO YOUR ORGANIZATION**  
(40 to 100 assessment questions)

Questions and domains are  
determined on our initial discovery call

# Milestone 2: Data and AI Governance Recommendations & Preliminary Roadmap

Our systematic approach to establishing robust data and AI governance framework follows these essential steps:



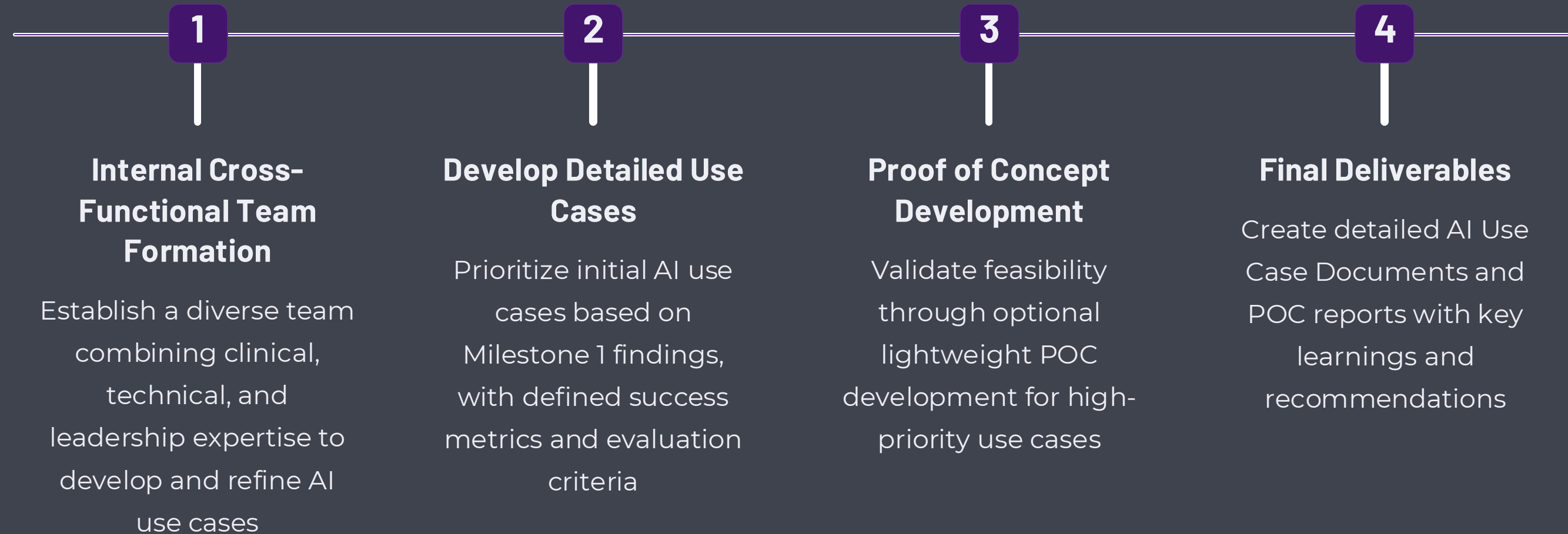
Each step builds upon the previous ones to create a comprehensive foundation for AI implementation while ensuring proper governance and compliance.

Table2						
#	Domain	Subdomain	Stage (post as)	Priority	Lead	Notes
1.10	Data & Models	Data Gov Policies	Discovery	Now	TBD	
1.20	Data & Models	Data Quality	Discovery	Now	TBD	
1.30	Data & Models	Data Privacy	Testing / Staging	Now	TBD	
1.40	Data & Models	Monitor Educ Outcomes	Ideation planning	Future	TBD	
1.50	Data & Models	Learning Outcomes Eval	Developing MVP	Next	TBD	
2.10	Leadership & Governance	Vision & Strategy	Testing / Staging	Now	TBD	
2.20	Leadership & Governance	Leadership Commitment	Deployed	Now	TBD	
2.30	Leadership & Governance	Oversight Team	Discovery	Now	TBD	
2.40	Leadership & Governance	Compliance Tracking	Discovery	Next	TBD	
2.50	Leadership & Governance	Ethical Guidelines	Discovery	Next	TBD	
2.60	Leadership & Governance	Equity	Ideation planning	Next	TBD	
2.70	Leadership & Governance	Feedback Mechanisms	Developing MVP	Next	TBD	
2.80	Leadership & Governance	CQI-AI Integrations	Discovery	Future	TBD	
2.90	Leadership & Governance	Transparency	Ideation planning	Next	TBD	
2.10	Leadership & Governance	Cultural Appropriate	Discovery	Future	TBD	
3.10	Legal & Compliance	Regulatory Compliance	Discovery	Now	TBD	
3.20	Legal & Compliance	Contracts & BAAs	Discovery	Now	TBD	
3.30	Legal & Compliance	Risk Assess	Ideation planning	Next	TBD	
3.40	Legal & Compliance	NJ Compliance	Developing MVP	Now	TBD	
3.50	Legal & Compliance	IEPs/ADA Compliance	Discovery	Now	TBD	
4.10	Operations & Planning	Procurement	Discovery	Next	TBD	
4.20	Operations & Planning	Staff Training	Ideation planning	Now	TBD	

After Leadership Approval, this plan can be imported into Asana, Jira, Trello, or other PM software.



# Milestone 3: Develop and Evaluate Initial Use Cases



This systematic approach ensures thorough evaluation and documentation of AI use cases, from team formation through final implementation recommendations.

# Embracing AI: The Path Forward

## Assess Readiness

Evaluate your organization's current AI preparedness across all dimensions.

## Develop Strategy

Create a comprehensive AI roadmap aligned with business goals.

## Invest in People

Prioritize talent development and cultural transformation for AI success.

Contact us to start your AI Readiness Assessment today! We tailor our offerings to the needs of your organization.  
Contact: [Brian@Health-Vision.AI](mailto:Brian@Health-Vision.AI)

