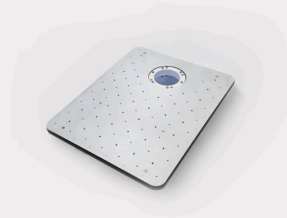
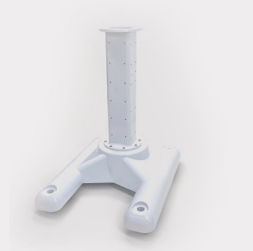


ACCESSORIES

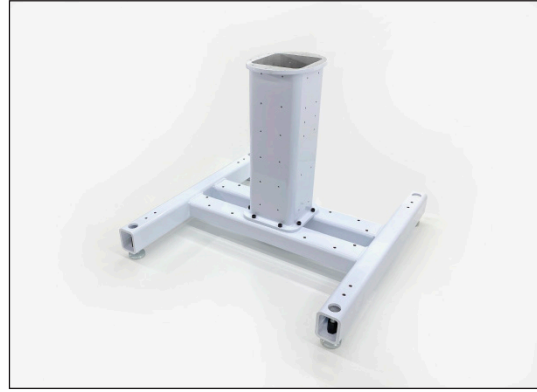
Rev: 06/07/21





RS-1

Rolling Robot Stand for OB7 and OB7 Stretch models.



RS-2

Robot Stand (not rolling) for OB7 Max series robot.



PEDESTAL 1

Pedestal only for floor mounting OB7 and OB7 Stretch models.



PEDESTAL 2

Pedestal only for floor mounting OB7 Max models.



AT-1

Accessory and assembly table for OB7 and OB7 Stretch models. 28" x 39" Requires RS-1 or pedestal 1 for use.



AT-2

Accessory and assembly table for OB7 Max models. 48"x48" Requires RS-2 or Pedestal 2 for use.



OB VISION

Automatic Robot Vision for all models of OB7 Robots



DUAL GRIPPER ADAPTER KIT

For installing two grippers on OB7. Compatible with all OB7 models. (Grippers not included.)



PG-1

Productive Robotics Parallel Gripper. 90mm opening travel. Max payload 4 Kg.



PG-2

Productive Robotics Parallel Gripper model 2: 90mm opening travel.



IO-1

OB7 interface module: 8 digital inputs (optically coupled), 8 outputs (dry contact SPDT relays), 4 analog inputs (not isolated), Screw terminal connections.

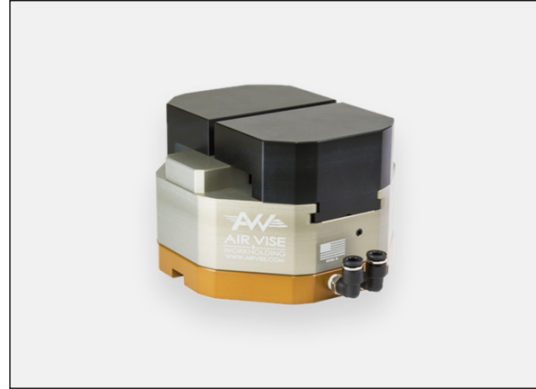


IO-2

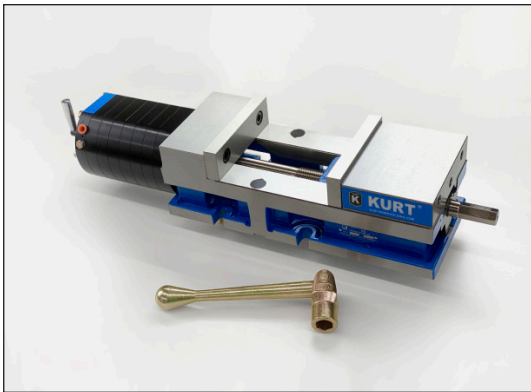
OB7 interface module: 8 digital or analog inputs (fully isolated), 8 outputs (PNP or NPN isolated): M12 connectors, 2 dry contact SPDT relay outputs (screw terminals).



WISE-002
Airwise model pneumatic milling vise 4” jaws. 6” accessory jaws available)



WISE-001
Airwise Model pneumatic milling vise for rotary table use 4” jaws. 6” accessory jaws available)



WISE-006
Kurt Pneumatic milling vise. 6” jaws



PNEU-1
Pneumatic interface module. 0-100PSI, built in pressure regulator. Requires I/O-2



CHIP FAN-004
Chip clearance fan for milling machines. Requires 3/4” tool holder

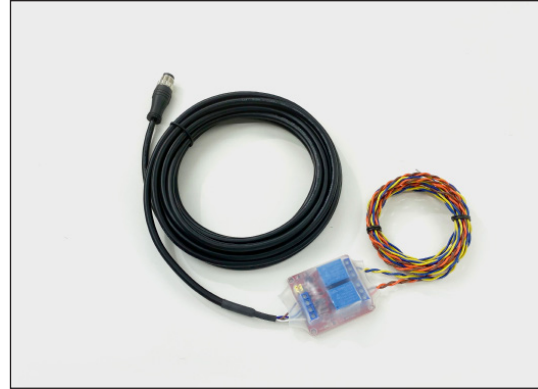


AIR BLOW OFF KIT
Air nozzle and adapter for all OB7 model robots. Requires Pneu1 and I/O-2



REMOTE RELAY 1 CH

Fully isolated remote interface relay.
Requires I/O-2



REMOTE RELAY 2CH

Fully isolated dual remote interface relay.
Requires I/O-2



LIDAR 1

Laser Safety Scanner. For slowing/stopping robot when a person enters the work area.
Requires I/O-1 or I/O-2



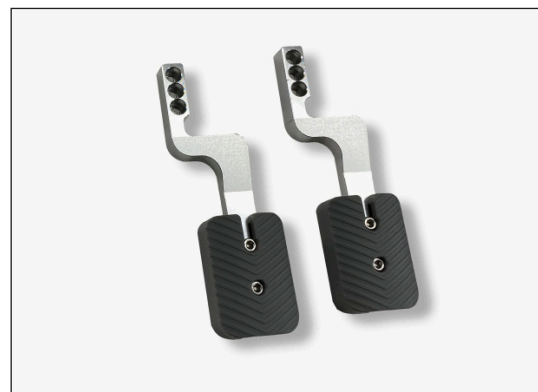
CABLES-LONG OB7

Long Cable set: 5 meter cable set for locating OB7 up to 5 meters from robot control computer. Compatible with all models of OB7



CBL-507: Y CABLE

for separating the two inputs or outputs on an M12 connector on I/O-2.



PG1 & PG2 FINGER SET

For Productive Robotics Parallel Gripper.