



# HOW TO ORDER POLY CAPPED BOLTS

Poly Capped Bolts are ideal for applications where you are attaching poly to another material and require a **100% poly surface**.

## COMMON APPLICATIONS

- Liners for tanks, hoppers, chutes, truck beds
- Conveyors
- Chain guides
- Material handling and process equipment
- Wear pads and slides



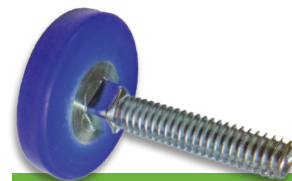
## How are Poly Capped Bolts made?

UHMW Poly is compression molded directly to the bolt. The entire head of the bolt is covered with a minimum of 1/4" seal. This process greatly reduces the possibility of the head becoming detached.

## HOW TO ORDER

1. Determine required size
  - Bolt length
  - Material thickness
  - Head thickness
2. Choose bolt material
3. Choose color
4. Add counterbore tool and hardware (optional)

**Note:** Lead time for Poly Capped Bolt orders is 3-4 weeks.



## IDEAL FOR PROTECTING

- ↳ Steel
- ↳ Aluminum
- ↳ Wood

# CHOOSING THE RIGHT SIZE BOLT FOR YOUR NEEDS

## 1 BOLT LENGTH & MATERIAL

What is the required bolt length and material for your application? Note the length does not include the head of the bolt.

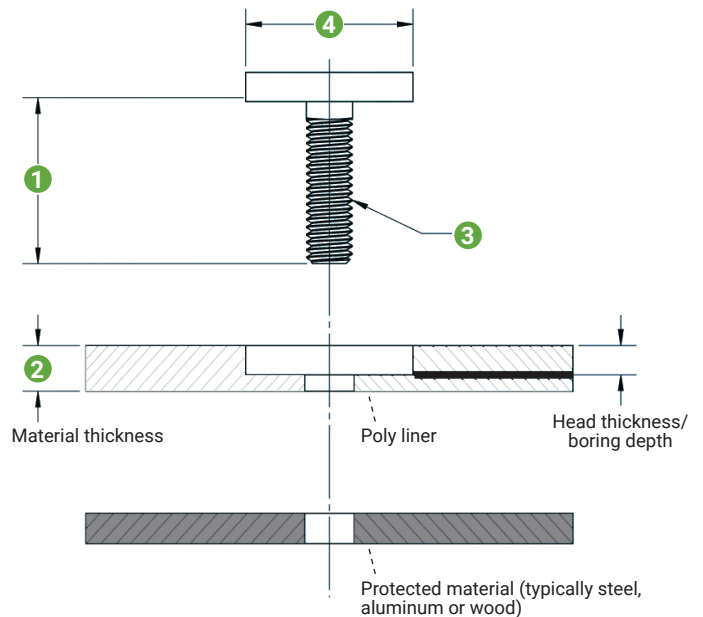
**LENGTH OPTIONS:** 1", 1.25", 1.5", 1.75", 2"

**MATERIAL OPTIONS:** Plain, Zinc, Stainless Steel (*special order*)

**Plain** Steel or "carbon steel" is the most common and most economical bolt material. It is not corrosion resistant. Typically used in indoor applications.

**Zinc** Typically a low carbon steel coated in zinc, relatively inexpensive. Provides moderate corrosion resistance. Suitable for indoor and outdoor applications.

**Stainless Steel** Good corrosion resistance, suitable for outdoor and marine applications. Call for pricing.



## 2 MATERIAL THICKNESS

What is the thickness of the poly material that you are installing the bolts into?

**AVAILABLE OPTIONS:** 1/4", 3/8", 1/2", 5/8", 3/4", 1"

**Note** Your material thickness will determine the head thickness of your bolt. Head thickness is equal to the thickness of the steel bolt head plus the poly cap. Your head thickness is equal to the depth that you will need to bore into the poly liner to achieve a smooth surface when the bolt is installed. See the parts table on the following pages to learn what your head thickness will be based on your required material thickness.



**NOTE:** The counterbore as well as the through-hole must be sized properly for the application of the poly capped bolt to be effective.

## 3 BOLT SIZE

What is the required bolt size for your application?

**AVAILABLE OPTIONS:** 1/4", 5/16", 3/8"

## 4 HEAD DIAMETER

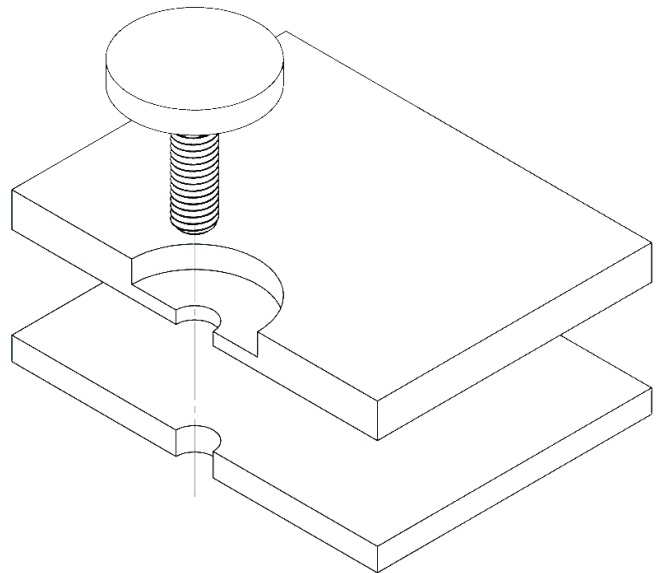
Your thread size will determine your head diameter. A head diameter of 1.182" is available for the 1/4" thread size. A head diameter of 1.375" is available for the 5/16" and 3/8" thread sizes.

**AVAILABLE OPTIONS:** 1.182", 1.375"

## 5 COLOR

What color would you like for the poly cap?

**COLOR OPTIONS:** Black, White, Natural, Silver, Red, Yellow, Green, Blue, Orange



**\$150 minimum order per bolt size.** Due to production processing, Pride Solutions reserves the right to ship +10% of the order quantity. For orders greater than 1,000 bolts, +1% of the order quantity. The lead time for Poly Capped Bolt orders is 3-4 weeks.

## Elevator Bolts - 1/4"-20 Thread with 1.182" Head Diameter

Part No.	Bolt Length	Your Material	Head Thickness	Plain (Ea.)	Zinc (Ea.)
77000008	1"	1/4"	.140	\$ 1.80	\$ 2.00
77000014	1 1/4"	1/4"	.140	\$ 1.80	\$ 2.00
77000020	1 1/2"	1/4"	.140	\$ 1.80	\$ 2.00
77000026	1 3/4"	1/4"	.140	\$ 1.85	\$ 2.05
77000032	2"	1/4"	.140	\$ 1.85	\$ 2.05

Part No.	Bolt Length	Your Material	Head Thickness	Plain (Ea.)	Zinc (Ea.)
77000009	1"	3/8"	.240	\$ 1.80	\$ 2.00
77000015	1 1/4"	3/8"	.240	\$ 1.80	\$ 2.00
77000021	1 1/2"	3/8"	.240	\$ 1.85	\$ 2.05
77000027	1 3/4"	3/8"	.240	\$ 1.85	\$ 2.05
77000033	2"	3/8"	.240	\$ 1.85	\$ 2.05

Part No.	Bolt Length	Your Material	Head Thickness	Plain (Ea.)	Zinc (Ea.)
77000010	1"	1/2"	.340	\$ 1.60	\$ 1.80
77000016	1 1/4"	1/2"	.340	\$ 1.85	\$ 2.05
77000022	1 1/2"	1/2"	.340	\$ 1.85	\$ 2.05
77000028	1 3/4"	1/2"	.340	\$ 1.85	\$ 2.05
77000034	2"	1/2"	.340	\$ 1.90	\$ 2.10

Part No.	Bolt Length	Your Material	Head Thickness	Plain (Ea.)	Zinc (Ea.)
77000011	1"	5/8"	.440	\$ 1.90	\$ 2.10
77000017	1 1/4"	5/8"	.440	\$ 1.90	\$ 2.10
77000023	1 1/2"	5/8"	.440	\$ 1.95	\$ 2.15
77000029	1 3/4"	5/8"	.440	\$ 1.95	\$ 2.15
77000035	2"	5/8"	.440	\$ 1.95	\$ 2.15

Part No.	Bolt Length	Your Material	Head Thickness	Plain (Ea.)	Zinc (Ea.)
77000012	1"	3/4"	.520	\$ 2.00	\$ 2.20
77000018	1 1/4"	3/4"	.520	\$ 2.00	\$ 2.20
77000024	1 1/2"	3/4"	.520	\$ 2.00	\$ 2.20
77000030	1 3/4"	3/4"	.520	\$ 2.00	\$ 2.20
77000036	2"	3/4"	.520	\$ 2.10	\$ 2.30

Part No.	Bolt Length	Your Material	Head Thickness	Plain (Ea.)	Zinc (Ea.)
77000013	1"	1"	.740	\$ 2.00	\$ 2.20
77000019	1 1/4"	1"	.740	\$ 1.80	\$ 2.00
77000025	1 1/2"	1"	.740	\$ 2.10	\$ 2.30
77000031	1 3/4"	1"	.740	\$ 2.10	\$ 2.30
77000037	2"	1"	.740	\$ 2.10	\$ 2.30

### Counterbore Tool (Optional)

Part No.	Your Material	Price (Ea.)
77000140	1/4"	\$ 88.00
77000141	3/8"	\$ 88.00
77000142	1/2"	\$ 88.00
77000143	5/8"	\$ 88.00
77000144	3/4"	\$ 88.00
77000145	1"	\$ 88.00



### Hardware (Optional)

Part No.	Material Type	Price (Ea.)
77000038	Poly Washers	\$ .20
77000039	Steel Washers	\$ .15
77000040	Locknuts	\$ .20
77000041	Regular Nuts	\$ .10



**Head Thickness = Boring Depth**

# Elevator Bolts - 5/16"–18 Thread with 1.375" Head Diameter

Part No.	Bolt Length	Your Material	Head Thickness	Plain (Ea.)	Zinc (Ea.)
77000042	1"	1/4"	.140	\$ 2.30	\$ 2.50
77000048	1 1/4"	1/4"	.140	\$ 2.30	\$ 2.50
77000054	1 1/2"	1/4"	.140	\$ 2.30	\$ 2.50
77000060	1 3/4"	1/4"	.140	\$ 2.35	\$ 2.55
77000066	2"	1/4"	.140	\$2.35	\$ 2.55

Part No.	Bolt Length	Your Material	Head Thickness	Plain (Ea.)	Zinc (Ea.)
77000043	1"	3/8"	.240	\$ 2.30	\$ 2.50
77000049	1 1/4"	3/8"	.240	\$ 2.35	\$ 2.55
77000055	1 1/2"	3/8"	.240	\$ 2.35	\$ 2.55
77000061	1 3/4"	3/8"	.240	\$ 2.35	\$ 2.55
77000067	2"	3/8"	.240	\$ 2.35	\$ 2.55

Part No.	Bolt Length	Your Material	Head Thickness	Plain (Ea.)	Zinc (Ea.)
77000044	1"	1/2"	.340	\$ 2.35	\$ 2.55
77000050	1 1/4"	1/2"	.340	\$ 2.35	\$ 2.55
77000056	1 1/2"	1/2"	.340	\$ 2.40	\$ 2.60
77000062	1 3/4"	1/2"	.340	\$ 2.40	\$ 2.60
77000068	2"	1/2"	.340	\$ 2.40	\$ 2.60

Part No.	Bolt Length	Your Material	Head Thickness	Plain (Ea.)	Zinc (Ea.)
77000045	1"	5/8"	.440	\$ 2.45	\$ 2.65
77000051	1 1/4"	5/8"	.440	\$ 2.45	\$ 2.65
77000057	1 1/2"	5/8"	.440	\$ 2.45	\$ 2.65
77000063	1 3/4"	5/8"	.440	\$ 2.35	\$ 2.55
77000069	2"	5/8"	.440	\$ 2.50	\$ 2.70

Part No.	Bolt Length	Your Material	Head Thickness	Plain (Ea.)	Zinc (Ea.)
77000046	1"	3/4"	.520	\$ 2.50	\$ 2.70
77000052	1 1/4"	3/4"	.520	\$ 2.50	\$ 2.70
77000058	1 1/2"	3/4"	.520	\$ 2.50	\$ 2.70
77000064	1 3/4"	3/4"	.520	\$ 2.55	\$ 2.75
77000070	2"	3/4"	.520	\$ 2.55	\$ 2.75

Part No.	Bolt Length	Your Material	Head Thickness	Plain (Ea.)	Zinc (Ea.)
77000047	1"	1"	.740	\$ 2.60	\$ 2.80
77000053	1 1/4"	1"	.740	\$ 2.60	\$ 2.80
77000059	1 1/2"	1"	.740	\$ 2.60	\$ 2.80
77000065	1 3/4"	1"	.740	\$ 2.50	\$ 2.70
77000071	2"	1"	.740	\$ 2.65	\$ 2.85

## Counterbore Tool (Optional)

Part No.	Your Material	Price (Ea.)
77000152	1/4"	\$ 88.00
77000153	3/8"	\$ 88.00
77000154	1/2"	\$ 88.00
77000155	5/8"	\$ 88.00
77000156	3/4"	\$ 88.00
77000157	1"	\$ 88.00



## Hardware (Optional)

Part No.	Material Type	Price (Ea.)
77000072	Poly Washers	\$ .20
77000073	Steel Washers	\$ .20
77000074	Locknuts	\$ .20
77000075	Regular Nuts	\$ .10



**Head Thickness = Boring Depth**

# Elevator Bolts - 3/8"–16 Thread with 1.375" Head Diameter

Part No.	Bolt Length	Your Material	Head Thickness	Plain (Ea.)	Zinc (Ea.)
77000104	1"	1/4"	.140	\$ 3.10	\$ 3.30
77000110	1 1/4"	1/4"	.140	\$ 3.15	\$ 3.35
77000116	1 1/2"	1/4"	.140	\$ 3.15	\$ 3.35
77000122	1 3/4"	1/4"	.140	\$ 3.15	\$ 3.35
77000128	2"	1/4"	.140	\$ 3.15	\$ 3.35

Part No.	Bolt Length	Your Material	Head Thickness	Plain (Ea.)	Zinc (Ea.)
77000105	1"	3/8"	.240	\$ 3.15	\$ 3.35
77000111	1 1/4"	3/8"	.240	\$ 3.20	\$ 3.40
77000117	1 1/2"	3/8"	.240	\$ 3.20	\$ 3.40
77000123	1 3/4"	3/8"	.240	\$ 3.20	\$ 3.40
77000129	2"	3/8"	.240	\$ 3.20	\$ 3.40

Part No.	Bolt Length	Your Material	Head Thickness	Plain (Ea.)	Zinc (Ea.)
77000106	1"	1/2"	.340	\$ 3.20	\$ 3.40
77000112	1 1/4"	1/2"	.340	\$ 3.20	\$ 3.40
77000118	1 1/2"	1/2"	.340	\$ 3.25	\$ 3.45
77000124	1 3/4"	1/2"	.340	\$ 3.25	\$ 3.45
77000130	2"	1/2"	.340	\$ 3.25	\$ 3.45

Part No.	Bolt Length	Your Material	Head Thickness	Plain (Ea.)	Zinc (Ea.)
77000107	1"	5/8"	.440	\$ 3.25	\$ 3.45
77000113	1 1/4"	5/8"	.440	\$ 3.25	\$ 3.45
77000119	1 1/2"	5/8"	.440	\$ 3.25	\$ 3.45
77000125	1 3/4"	5/8"	.440	\$ 3.30	\$ 3.50
77000131	2"	5/8"	.440	\$ 3.30	\$ 3.50

Part No.	Bolt Length	Your Material	Head Thickness	Plain (Ea.)	Zinc (Ea.)
77000108	1"	3/4"	.520	\$ 3.30	\$ 3.50
77000114	1 1/4"	3/4"	.520	\$ 3.35	\$ 3.55
77000120	1 1/2"	3/4"	.520	\$ 3.35	\$ 3.55
77000126	1 3/4"	3/4"	.520	\$ 3.35	\$ 3.55
77000132	2"	3/4"	.520	\$ 3.35	\$ 3.55

Part No.	Bolt Length	Your Material	Head Thickness	Plain (Ea.)	Zinc (Ea.)
77000109	1"	1"	.740	\$ 3.35	\$ 3.55
77000115	1 1/4"	1"	.740	\$ 3.40	\$ 3.60
77000121	1 1/2"	1"	.740	\$ 3.40	\$ 3.60
77000127	1 3/4"	1"	.740	\$ 3.40	\$ 3.60
77000133	2"	1"	.740	\$ 3.40	\$ 3.60

## Counterbore Tool (Optional)

Part No.	Your Material	Price (Ea.)
77000158	1/4"	\$ 88.00
77000159	3/8"	\$ 88.00
77000160	1/2"	\$ 88.00
77000161	5/8"	\$ 88.00
77000162	3/4"	\$ 88.00
77000163	1"	\$ 88.00



## Hardware (Optional)

Part No.	Material Type	Price (Ea.)
77000134	Poly Washers	\$ .20
77000135	Steel Washers	\$ .25
77000136	Locknuts	\$ .20
77000137	Regular Nuts	\$ .10



**Head Thickness = Boring Depth**





# ABOUT PRIDE SOLUTIONS



Pride Solutions has the equipment, capacity and expertise to solve your manufacturing challenges, from compression molding complex UHMW parts, to overmolding precision metal parts with poly or rubber, to fabricating plastic parts and assembling final products. We have the tools and skills to get the job done to your specification — on time and on budget. We develop custom poly parts from concept to completion, from designing and engineering to supply chain, material planning and shipping.



## OUR CAPABILITIES



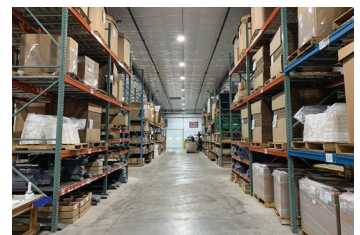
**COMPRESSION  
MOLDING**



**PLASTIC  
FABRICATION**



**CONTRACT  
ASSEMBLY**



**SHIPPING &  
WAREHOUSING**

**We are excited to support your next plastic fabrication, UHMW compression molding or contract assembly project. Contact us today to request a quote.**