

SYSTEM APPLICATIONS

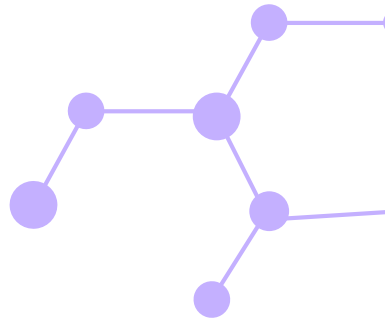
TRAINING PROJECT SAMPLE
Inna Link





Business Problem

Organizational changes and staff turnover created a need to better support the Clinical Applications team at **Awesome Diagnostics**. Many new hires lacked foundational skills in system operation and troubleshooting. This affected the quality of field system support and overall customer experience.



Training Audience

The training was designed for **Application Specialists** who install, troubleshoot, and train customers on autoimmune testing systems. Many come with clinical backgrounds, but new hires often need structured training to build technical skills and provide consistent support in the field.



Global Audience

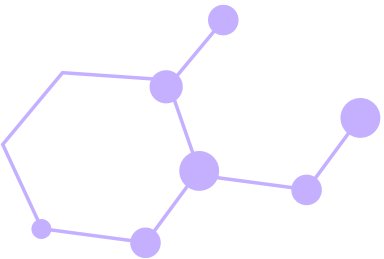
The global team spans across the US, EU, LATAM, and APAC regions



500+
Roles

Needs Analysis Findings

I held focus groups with Application Specialists, Affiliate Partners, and Support Managers to identify key tasks, common issues, field challenges, and essential skills.



Uneven Knowledge Base

Different levels of technical expertise resulted in inconsistent support and customer training experiences



Troubleshooting Challenges

Limited troubleshooting experience made it difficult to diagnose and resolve system issues



Resource Gaps

Limited access to on-demand tools made it difficult for App Specialists to refresh skills when needed

Design & Development Process



ANALYZE

- Conduct stakeholder interviews
- Analyze feedback
- Define learning objectives
- Develop a training blueprint



DESIGN

- Create eLearning outlines
- Create video scripts
- Create ITL content outlines
- Create assessment questions



DEVELOP

- Develop eLearning courses
- Develop videos
- Develop ILT Materials
- Build quizzes & exams



IMPLEMENT & EVALUATE

- Create & test eLearning in the LMS
- Announce the training launch
- Enroll participants
- Conduct training evaluation

Project Team



Inna Link, Lead ID

Drove end-to-end training design, development, and delivery, while integrating input from cross-functional teams

Lead SME



Shared system expertise and partnered on content, training strategy, and reviews



Support SMEs

Reviewed training content for technical accuracy and clarity



Marketing Team

Offered feedback on product messaging and alignment with marketing goals

Project Management



Video Deliverable Example



ANALYZE



DESIGN



DEVELOP



IMPLEMENT & EVALUATE



Inna, Lead ID

Define learning objectives

Develop video script

Develop video draft

Finalize Video

Lead SME

Select relevant content

Co-develop video script

Review video draft

Support SMEs

Review video script

Review video draft

Marketing Team

Review video script

Review video draft

Solution Blueprint



Performance Support

On-demand Video Library



Resource Gaps

Limited access to on-demand tools made it difficult for App Specialists to refresh skills when needed



Level: 3 Skill Application

Instructor-Led Training



Troubleshooting Challenges

Limited troubleshooting experience made it difficult to diagnose and resolve system issues



Level 2: Core Skills

Task-centered eLearning



Uneven Knowledge Base

Different levels of technical expertise resulted in inconsistent system support and customer training experiences



Level 1: Knowledge

Foundational eLearning



Uneven Knowledge Base

Different levels of technical expertise resulted in inconsistent system support and customer training experiences

Evaluation Plan

Assessment Approach

A comprehensive evaluation plan was implemented to assess **knowledge, performance behavior, and training quality**—combining instructor observations, a final certification exam, and participant feedback surveys.



Performance Observations

During ILT with live instructor feedback



Certification Exam

Upon ILT completion via LMS



Evaluation Survey

Last day of ILT class via MS Forms

Deliverable Samples

Design Sample

(Video Script)

Select to View Sample

Video 4 (Calibration Procedure).docx

Search

Font

Paragraph

Styles

Editing

Adobe Acrobat

Voice

Sensitivity

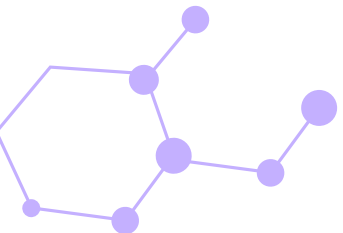
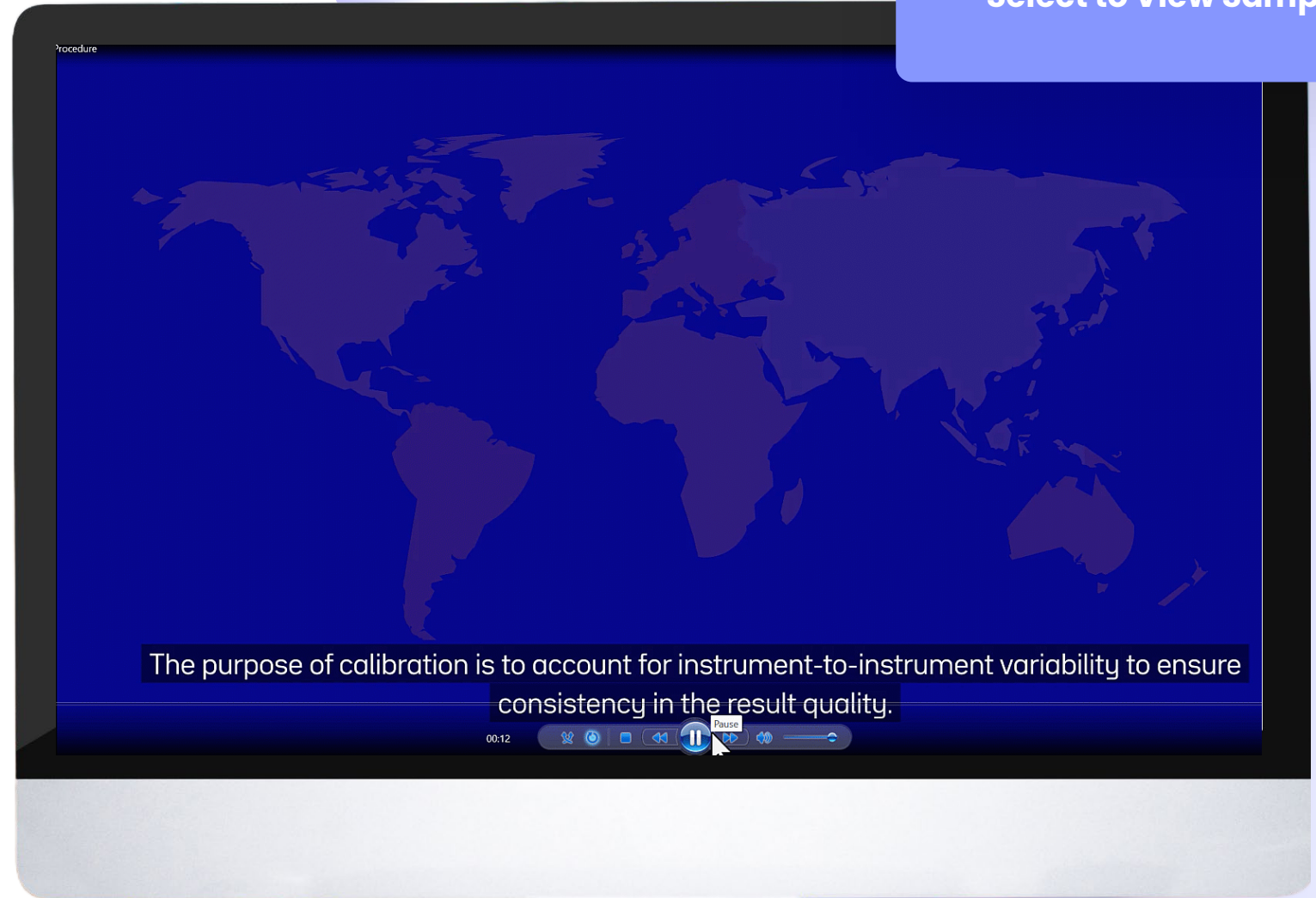
Add-ins

Calibration Procedure

Script	Visual and Interactivity
<p>Intro</p> <p>The purpose of calibration is to account for instrument-to-instrument variability to ensure consistency in the result quality.</p>	<p>V3I1</p> <p>Two bioflash instruments representing different locations (USA vs France flags) in the background.</p> <p>V3I2</p> <p>The "Calibration Details" graph overlay showing 2 graph lines. Label each graph line with a flag.</p> <div><div>Calibration Details of Light: iCL Lot 6304</div><div>Run at: 2024-10-03, Current: 1 of 2</div><div>Calibration Parameters</div><div>Bottom: 316.4508 Top: 886470.5458</div><div>HLI Slope: 1.2053 Log: 2.3565</div><div>Enter RLU: Dose: </div><div>Average RLU Change: 0.2214%</div><div>All calibration points CV% pass</div><div>QAP%: 0.002375%</div><div>Valid</div><div>Calibrated using Slopper lot 6655.</div><div><input type="checkbox"/> Logarithmic graph</div><div></div></div>

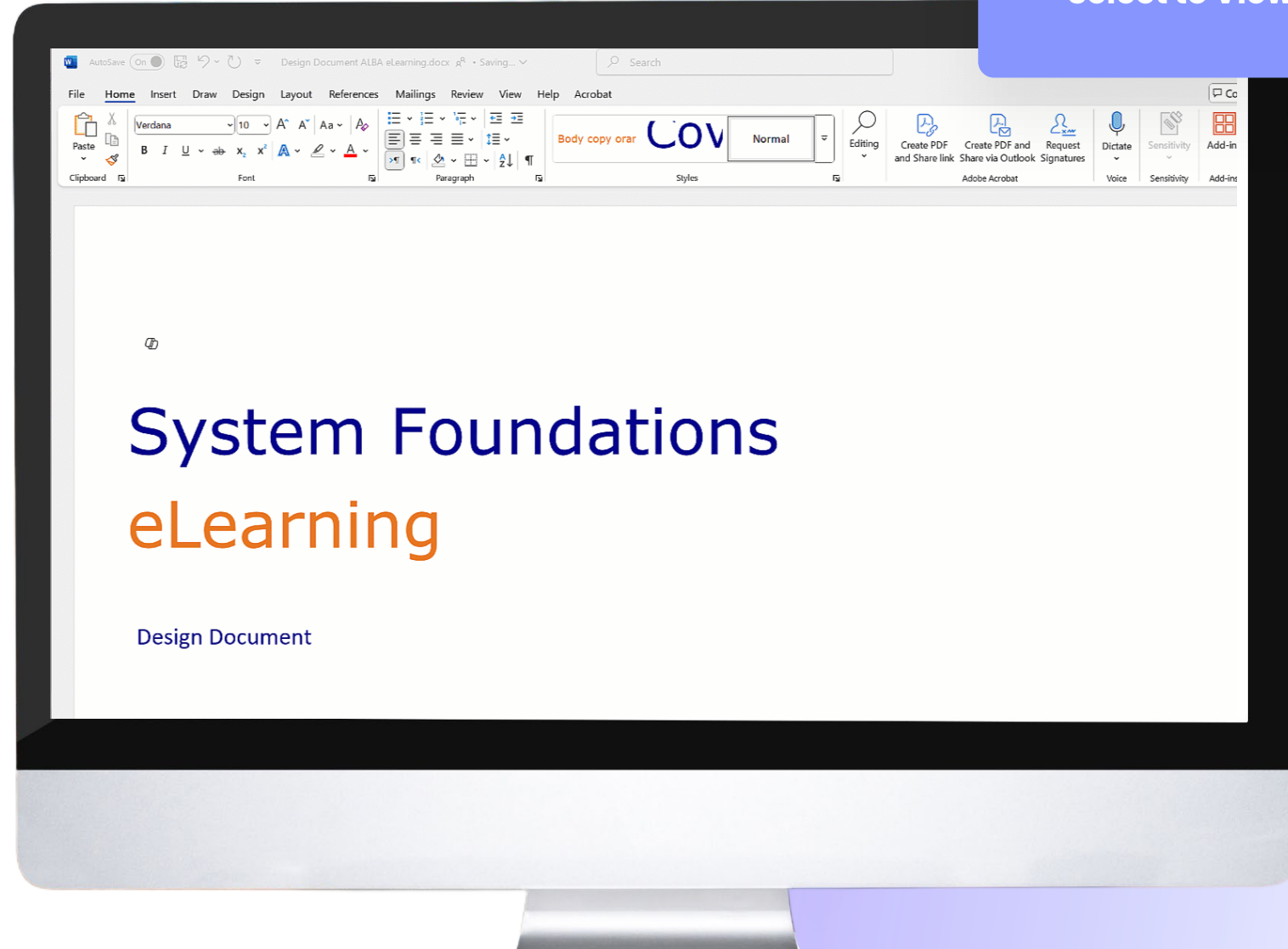
Development Sample (Final Video)

Select to View Sample



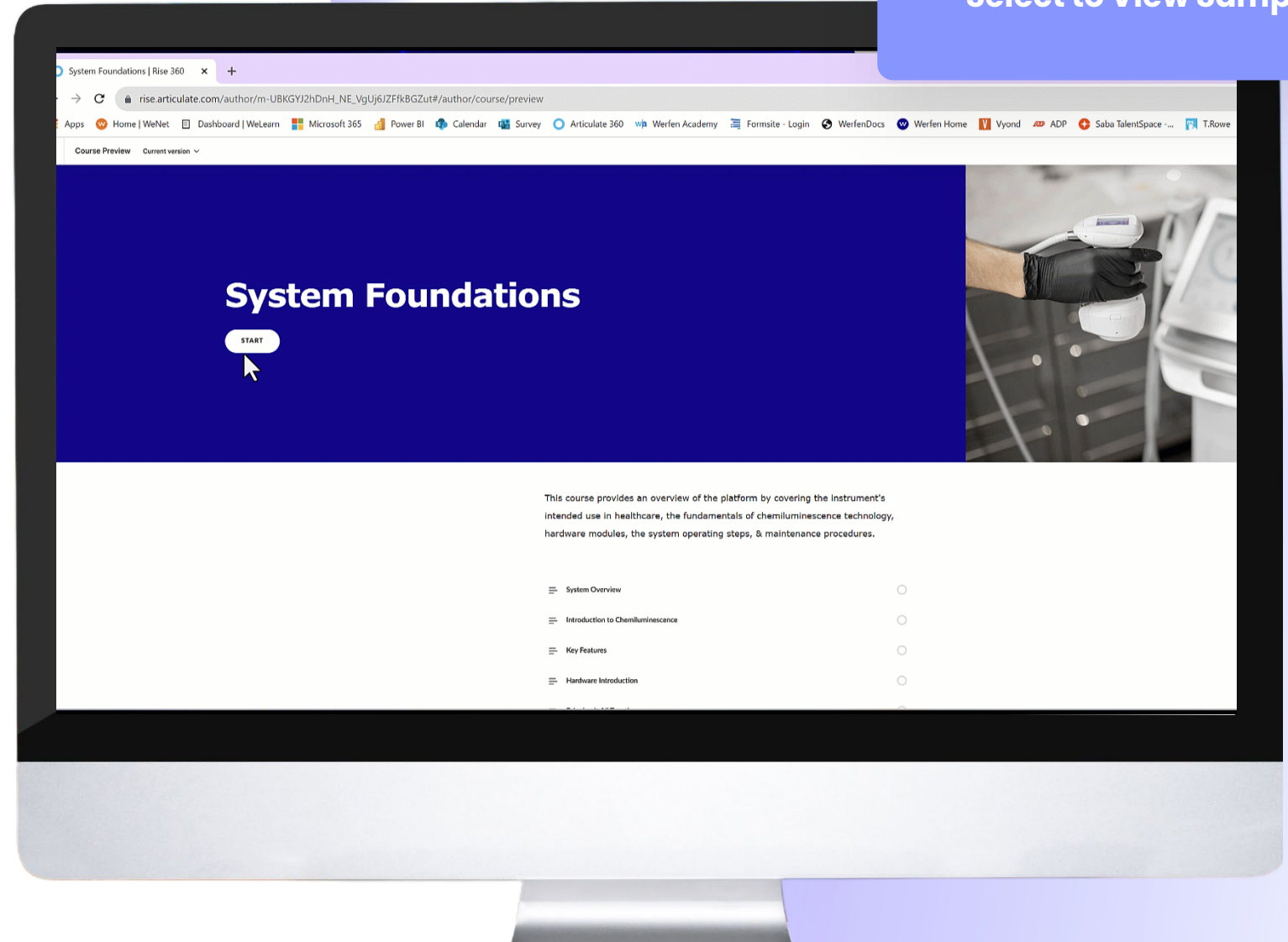
Design Sample (eLearning Design Document)

Select to View Sample



Development Sample (Final eLearning)

Select to View Sample



Evaluation Sample (Participant Survey)

Select to View Sample



Autoimmunity Training Feedback

* Required

Tell us about yourself



1

Select Your Organization Affiliation *

Thank You

