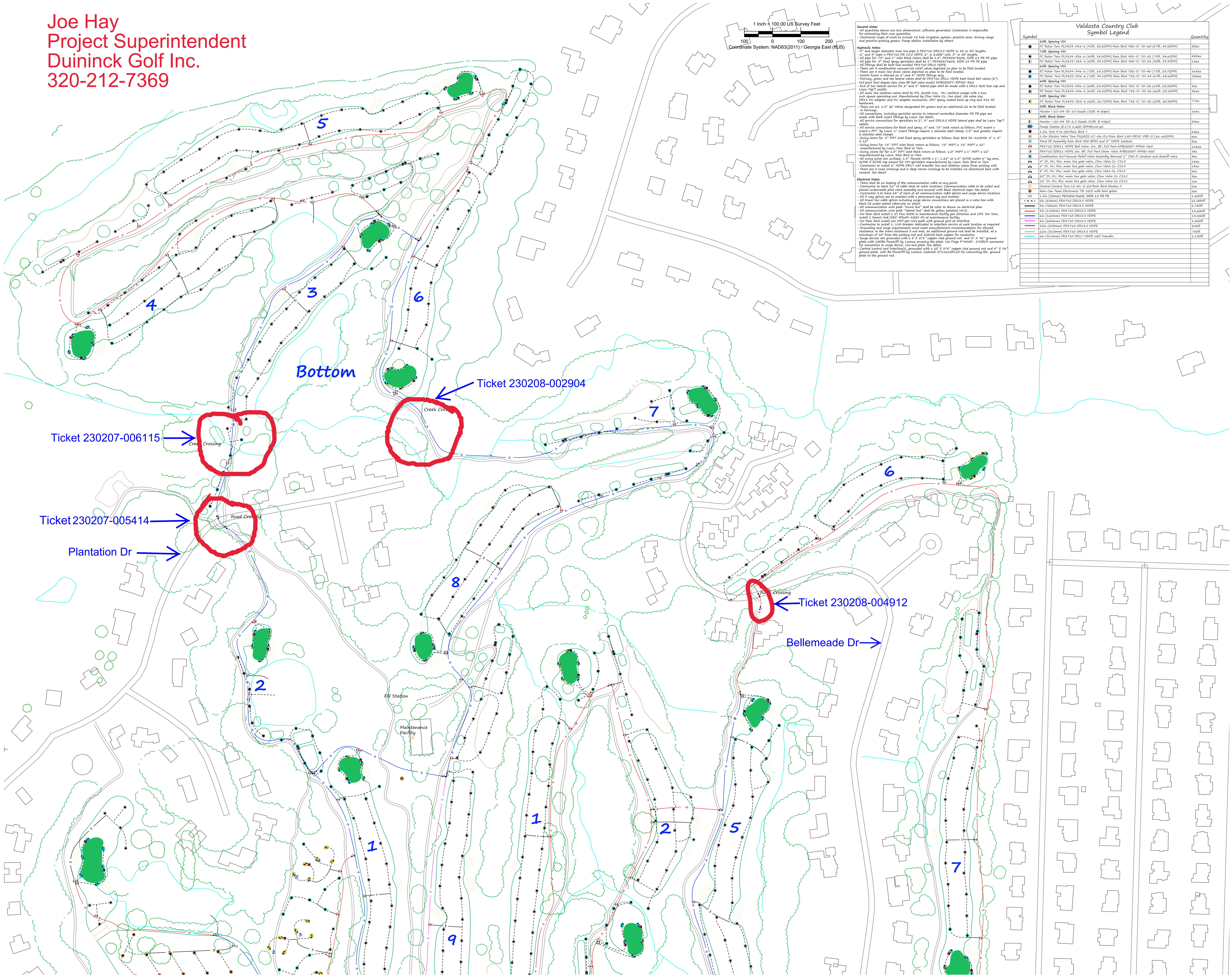


Joe Hay
Project Superintendent
Duininck Golf Inc.
320-212-7369



General Notes:

- All quantities shown are two dimensional, software generated. Contractor is responsible for obtaining their own quantities.
- Contractor shall provide 10% extra for material and labor.
- Contractor shall provide 10% extra for material and labor.
- Contractor shall provide 10% extra for material and labor.

Hydraulic Notes:

- All and larger diameter main line pipe is PE4710 DR13.5 HDPE in 40' or 50' lengths.
- 4" and 6" pipe is PE4710 DR 13.5 HDPE in 20' or 30' lengths.
- All pipe for 7.5" and 9" inlet black rotors shall be 1.5" PE400/2400 SDR 25 PR PE pipe.
- All pipe for 12" inlet black rotors shall be 1.5" PE400/2400 SDR 25 PR PE pipe.
- All fittings shall be butt fused model PE4710 DR13.5 HDPE.
- There are 4 combination valves for retail value dependent on plan to be field located.
- There are 5 main line drain valves dependent on plan to be field located.
- There are 10 main line drain valves dependent on plan to be field located.
- There are 10 main line drain valves dependent on plan to be field located.

Electrical Notes:

- There shall be no looping of the communication cable at any point.
- Contractor to have 1/2" of cable slack at rotor locations. Communication cable to be coiled and placed underneath pivot valve assembly and secured with black electrical tape. See detail.
- Contractor to have 24" of cable slack at all communication cable splices and large device locations.
- All wiring shall be in conduit and secured with black electrical tape. See detail.
- All wiring shall be in conduit and secured with black electrical tape. See detail.

Valdosta Country Club Symbol Legend		
Symbol	Description	Quantity
1	12" Spacing VMI	1000
2	12" Spacing VMI	1000
3	12" Spacing VMI	1000
4	12" Spacing VMI	1000
5	12" Spacing VMI	1000
6	12" Spacing VMI	1000
7	12" Spacing VMI	1000
8	12" Spacing VMI	1000
9	12" Spacing VMI	1000
10	12" Spacing VMI	1000
11	12" Spacing VMI	1000
12	12" Spacing VMI	1000
13	12" Spacing VMI	1000
14	12" Spacing VMI	1000
15	12" Spacing VMI	1000
16	12" Spacing VMI	1000
17	12" Spacing VMI	1000
18	12" Spacing VMI	1000
19	12" Spacing VMI	1000
20	12" Spacing VMI	1000
21	12" Spacing VMI	1000
22	12" Spacing VMI	1000
23	12" Spacing VMI	1000
24	12" Spacing VMI	1000
25	12" Spacing VMI	1000
26	12" Spacing VMI	1000
27	12" Spacing VMI	1000
28	12" Spacing VMI	1000
29	12" Spacing VMI	1000
30	12" Spacing VMI	1000
31	12" Spacing VMI	1000
32	12" Spacing VMI	1000
33	12" Spacing VMI	1000
34	12" Spacing VMI	1000
35	12" Spacing VMI	1000
36	12" Spacing VMI	1000
37	12" Spacing VMI	1000
38	12" Spacing VMI	1000
39	12" Spacing VMI	1000
40	12" Spacing VMI	1000
41	12" Spacing VMI	1000
42	12" Spacing VMI	1000
43	12" Spacing VMI	1000
44	12" Spacing VMI	1000
45	12" Spacing VMI	1000
46	12" Spacing VMI	1000
47	12" Spacing VMI	1000
48	12" Spacing VMI	1000
49	12" Spacing VMI	1000
50	12" Spacing VMI	1000
51	12" Spacing VMI	1000
52	12" Spacing VMI	1000
53	12" Spacing VMI	1000
54	12" Spacing VMI	1000
55	12" Spacing VMI	1000
56	12" Spacing VMI	1000
57	12" Spacing VMI	1000
58	12" Spacing VMI	1000
59	12" Spacing VMI	1000
60	12" Spacing VMI	1000
61	12" Spacing VMI	1000
62	12" Spacing VMI	1000
63	12" Spacing VMI	1000
64	12" Spacing VMI	1000
65	12" Spacing VMI	1000
66	12" Spacing VMI	1000
67	12" Spacing VMI	1000
68	12" Spacing VMI	1000
69	12" Spacing VMI	1000
70	12" Spacing VMI	1000
71	12" Spacing VMI	1000
72	12" Spacing VMI	1000
73	12" Spacing VMI	1000
74	12" Spacing VMI	1000
75	12" Spacing VMI	1000
76	12" Spacing VMI	1000
77	12" Spacing VMI	1000
78	12" Spacing VMI	1000
79	12" Spacing VMI	1000
80	12" Spacing VMI	1000
81	12" Spacing VMI	1000
82	12" Spacing VMI	1000
83	12" Spacing VMI	1000
84	12" Spacing VMI	1000
85	12" Spacing VMI	1000
86	12" Spacing VMI	1000
87	12" Spacing VMI	1000
88	12" Spacing VMI	1000
89	12" Spacing VMI	1000
90	12" Spacing VMI	1000
91	12" Spacing VMI	1000
92	12" Spacing VMI	1000
93	12" Spacing VMI	1000
94	12" Spacing VMI	1000
95	12" Spacing VMI	1000
96	12" Spacing VMI	1000
97	12" Spacing VMI	1000
98	12" Spacing VMI	1000
99	12" Spacing VMI	1000
100	12" Spacing VMI	1000

Sheet:
H-2

Date: July 2022

Status: Final

Type: Hydraulic

Notes: See Inset

VALDOSTA COUNTRY CLUB

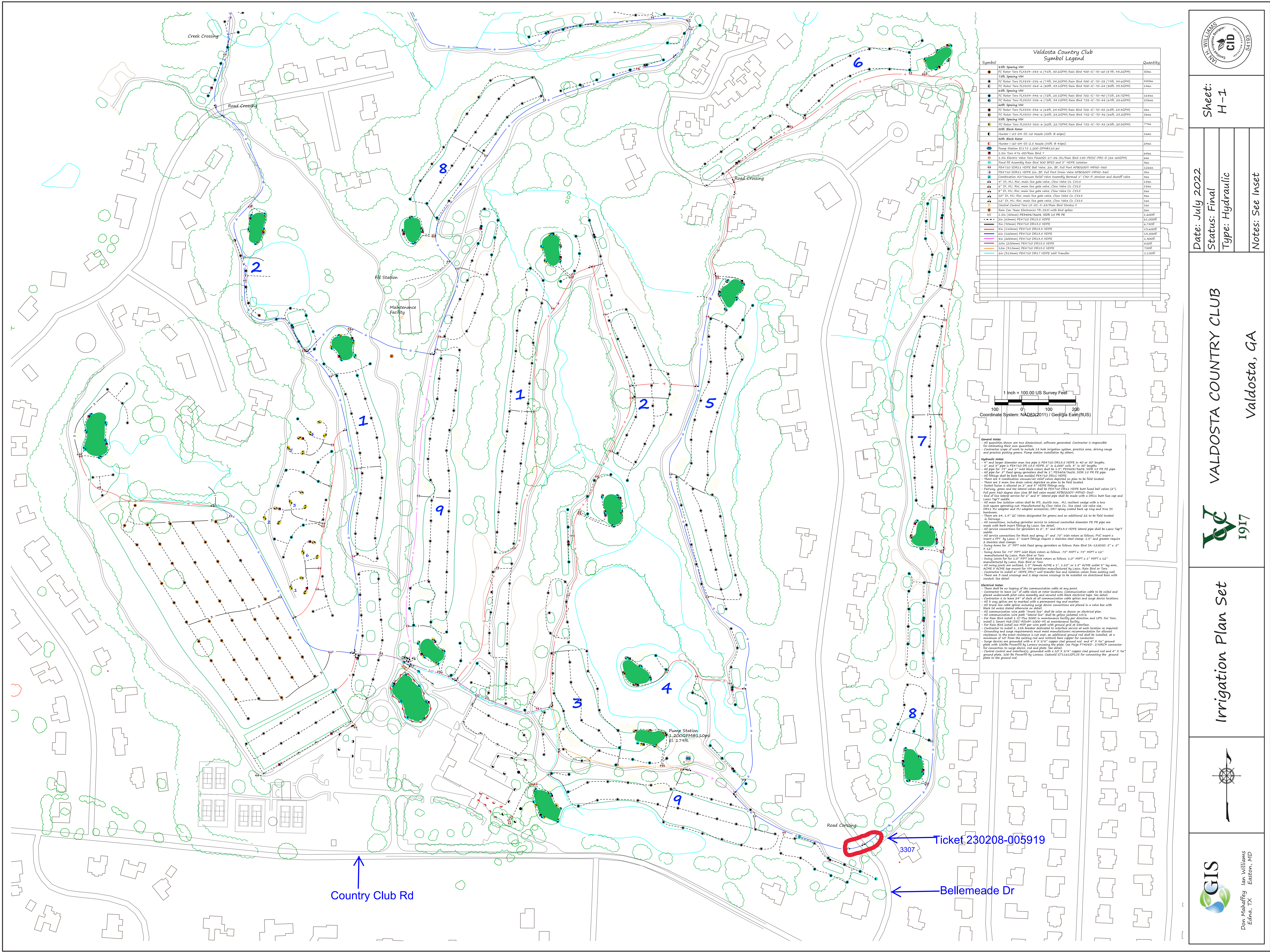
1917

Irrigation Plan Set

GIS

Don Mahaffey
Edna, TX

Ian Williams
Easton, MD



Valdosta Country Club Symbol Legend		
Symbol	ISIRI Spacing VNI	Quantity
●	PC Rotor Toro FLX834-588-6 (12ft, 50.2GPM) Rain Bird 100-1C-70-40 (8ft), 43.2GPM	50ea
●	72ft Spacing VNI	
●	PC Rotor Toro FLX834-556-6 (14ft, 24.2GPM) Rain Bird 100-1C-70-24 (7ft), 24.6GPM	44ea
●	PC Rotor Toro FLX835-568-6 (8ft), 43.2GPM Rain Bird 100-1C-70-24 (8ft), 25.2GPM	14ea
●	48ft Spacing VNI	
●	PC Rotor Toro FLX834-544-6 (72ft, 28.1GPM) Rain Bird 100-1C-70-40 (72ft), 28.7GPM	16ea
●	PC Rotor Toro FLX835-536-6 (72ft, 34.2GPM) Rain Bird 100-1C-70-44 (48ft), 28.6GPM	10ea
●	ISIRI Spacing VNI	
●	PC Rotor Toro FLX834-556-6 (8ft), 24.4GPM Rain Bird 100-1C-70-32 (8ft), 23.5GPM	9ea
●	PC Rotor Toro FLX835-544-6 (8ft), 28.2GPM Rain Bird 100-1C-70-36 (48ft), 23.2GPM	5ea
●	ISIRI Spacing VNI	
●	PC Rotor Toro FLX835-528-6 (62ft, 22.7GPM) Rain Bird 100-1C-70-32 (62ft), 20.5GPM	77ea
●	ISIRI Spacing VNI	
●	SOB Black Rotor	
●	Hunter 1.50-04-55-50 Nozzle (32ft, 8.6GPM)	1ea
●	SOB Black Rotor	
●	Hunter 1.20-04-55-2.5 Nozzle (32ft, 8.4GPM)	24ea
●	Pump Station E117.9 2.200 GPM@150 psi	
●	1.5in Toro 474-00/Rain Bird 7	4ea
●	1.5in Electric Valve Toro P24000-27 0in-0.0in Rain Bird 530-PESC-PRS-2 (24-40GPM)	4ea
●	Pool Fil Assembly Rain Bird 500-BFES and 3" HDPE Solution	3ea
●	PE4710 SDR11 HDPE Ball Valve, 2in, BF, Full Port AFB0200Y-MH40-340	12ea
●	PE4710 SDR11 HDPE 2in, BF, Full Port AFB0200Y-MH40-340	9ea
●	Combination Air/Vacuum Relief Valve Assembly Standard 1" CSD-7, strainer and shutoff valve	4ea
●	4" DI, MJ, Riv, main line gate valve, Clow Valve Co. C315	13ea
●	4" DI, MJ, Riv, main line gate valve, Clow Valve Co. C315	11ea
●	4" DI, MJ, Riv, main line gate valve, Clow Valve Co. C315	2ea
●	10" DI, MJ, Riv, main line gate valve, Clow Valve Co. C315	5ea
●	12" DI, MJ, Riv, main line gate valve, Clow Valve Co. C315	1ea
●	Control Control Toro LX-05 3" 24/Rain Bird Stratus II	1ea
●	Rain, Clim, Texas Electronics TR-5281 with bird spikes	2ea
●	1.5in Crown PE4604/MC, SDR 10 PE	1 ea/200'
●	2in (45mm) PE4710 DR13.5 HDPE	41,200'
●	3in (75mm) PE4710 DR13.5 HDPE	6,750'
●	4in (100mm) PE4710 DR13.5 HDPE	12,600'
●	6in (150mm) PE4710 DR13.5 HDPE	13,500'
●	8in (200mm) PE4710 DR13.5 HDPE	1,400'
●	10in (250mm) PE4710 DR13.5 HDPE	800'
●	12in (300mm) PE4710 DR13.5 HDPE	750'
●	6in (150mm) PE4710 DR17 HDPE well Transfer	1,150'



General Notes:
All quantities shown are two dimensional, software generated. Contractor is responsible for determining their own quantities.
Contractor scope of work to include 11 hole irrigation system, practice area, driving range and practice putting greens. Pump station installation by others.

Hydraulic Notes:
All and larger diameter main line pipe is PE4710 DR13.5 HDPE in 40' or 50' lengths.
2" and 3" pipe is PE4710 DR 13.5 HDPE 2" in 2,000' coils, 3" in 50' lengths.
All pipe for 75" and 100" main block rotors shall be 2" PE4604/MC, SDR 10 PE PE pipe.
All pipe for 3" fluid spray sprinklers shall be 1" PE4604/MC, SDR 10 PE PE pipe.
All fittings shall be butt fused molded PE4710 DR13.5 HDPE.
There are 4 combination vacuum/air relief valves depicted on plan to be field located.
There are 5 main line drain valves depicted on plan to be field located.
Socket fusion is allowed on 2" and 3" HDPE fittings only.
For every green and tee lateral valves shall be PE4710 DR13.5 HDPE butt fused ball valves (2").
Full port 360 degree slow close BF ball valve model AFB0200Y-MH40-340.
End of line lateral service for 2", 3" and 4" lateral pipe shall be made with a DR13.5 butt fused cap and Lanco TapT saddle.
All main line isolation valves shall be 85% ductile iron, MJ, resilient wedge with a two inch above operating nut. Manufactured by Clow Valve Co. See detail. Use valve size DR13.5 MJ adapter and MJ adapter accessories, DRT spray coated back up ring and 216-55 hardware.
There are 64 1.5" QC Valves designated for greens and an additional 22 to be field located in fairways.
All connections, including sprinkler service to internal controlled diameter PE PR pipe are made with both ends fitted by Lanco. See detail.
All service connections for sprinklers to 2", 3" and DR13.5 HDPE lateral pipe shall be Lanco TapT saddle.
All service connections for block and spray 2" and 75" inlet rotors as follows: PVC insert x 1/2" x 1/2" by Lanco 2" insert fitting. Requires 1 standard steel clamp, 1 2" and greater requires 2 standard steel clamps.
Swing Arms for 1.5" FPT inlet fluid spray sprinklers as follows: Rain Bird SA-125000 3" x 2" x 12".
Swing Arms for 75" FPT inlet block rotors as follows: 75" MPT x 75" MPT x 12" manufactured by Lanco, Rain Bird or Toro.
Swing joints for 1.5" FPT inlet block rotors as follows: 1.0" MPT x 1.5" MPT x 12" manufactured by Lanco, Rain Bird or Toro.
All swing joints are unlabeled, 1.5" Female ACHC x 1.5", 1.25" or 1.5" ACHC outlet 8" lay arm. ACHC 5 ACHC top mount for VNI sprinklers mounted by Lanco, Rain Bird or Toro.
Contractor to install 6" HDPE DR17 well transfer line and isolation valves from existing well. There are 2 well crossings and 2 deep remote crossings to be installed via directional bore with conduit. See detail.

Electrical Notes:
There shall be no tapping of the communication cable at any point.
Contractor to have all cable slack at entry location. Communication cable to be color and placed underneath pilot valve assembly and secured with black electrical tape. See detail.
Contractor to have 24" of slack at all communication cable entries and surge device locations.
All 3 way splices are to be marked with a permanent tag and marker.
All branch cable splices including surge device connections are placed in a valve box with black 1/4" wires stated otherwise in detail.
All communication wire path "Track Line" shall be color as shown on electrical plan.
For Rain Bird install 1.5 (1) Plus 3000 in maintenance facility per direction and UPS. For Toro, install 1.5 (1) Plus 1000 in maintenance facility per direction and UPS.
For Rain Bird install use MSP per wire path with ground grid at interface.
Contractor to install 1.5A breaker dedicated to surface sprinkler at each location as required.
Grounding and surge requirements must meet manufacturer's recommendation for allowed resistance in the event resistance is not met, an additional ground rod shall be installed, as a minimum of 12" from the existing rod and 10AWG bare copper for conductor.
Surge devices are grounded with 8" x 2" x 2" copper clad ground rod and 4" x 1/2" ground plate with 1000lb Powerfil by Lanco encasing the plate. Use Page P7404D-2 TORC4 connector for connection to surge device, rod and plate. See detail.
Control control and interlocked, grounded with a 12" x 5/8" copper clad ground rod and 4" x 1/2" ground plate, 1000 lb Powerfil by Lanco. Utilized DT1145GLD for connecting the ground plate to the ground rod.

Date: July 2022

Status: Final

Type: Hydraulic

Notes: See Inset

Valdosta Country Club

1917

Irrigation Plan Set

GIS

Don Mahaffey
Edna, TX

Ian Williams
Easton, MD

Country Club Rd

3307

Ticket 230208-005919

Bellemeade Dr



Plantation Dr

Plantation Dr

Cherokee Cir

Plantation Dr

Image Landsat / Copernicus

30°53'34.81" N 83°18'3



Image Landsat / Copernicus

Google



Plantation Dr

Image Landsat / Copernicus



Image Landsat / Copernicus



Country Club Rd

Pellemade Dr

Pellemade Dr

Bermuda Run Dr

Bermuda Run Dr

Arbor Run Dr

Jupiter Steel

Image Landsat / Copernicus