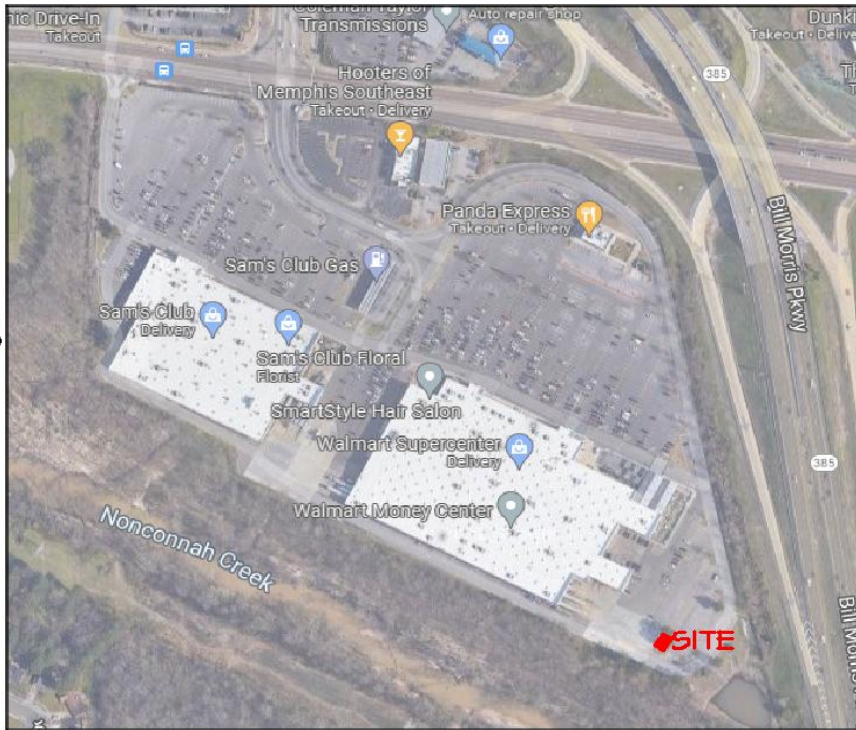


General Description on Power Company Easement Req:

Proposed easement to go from compound to existing utility pole. The power route will go from the compound south 73'+ to a new pole mounted transformer and then northwest 620'+ to the existing utility pole. Unable to provide cost estimate, is TBD until finalized. Contractor to install all the secondary conduit & cable, Power Co. will handle all the primary work to the new pole installed

Design Sketch

1. S. NORTH 8.37
MAG.



**AERIAL PLAN
N.T.S.**

