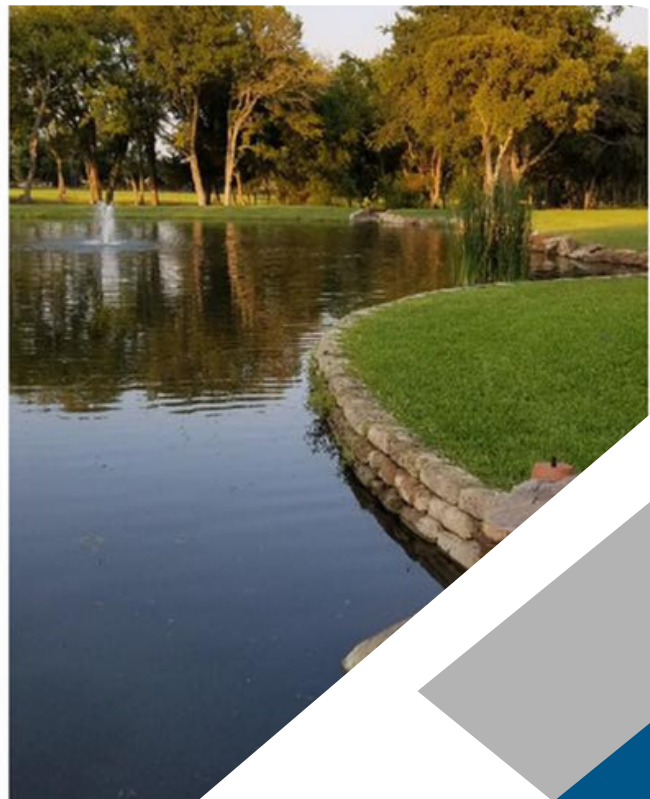
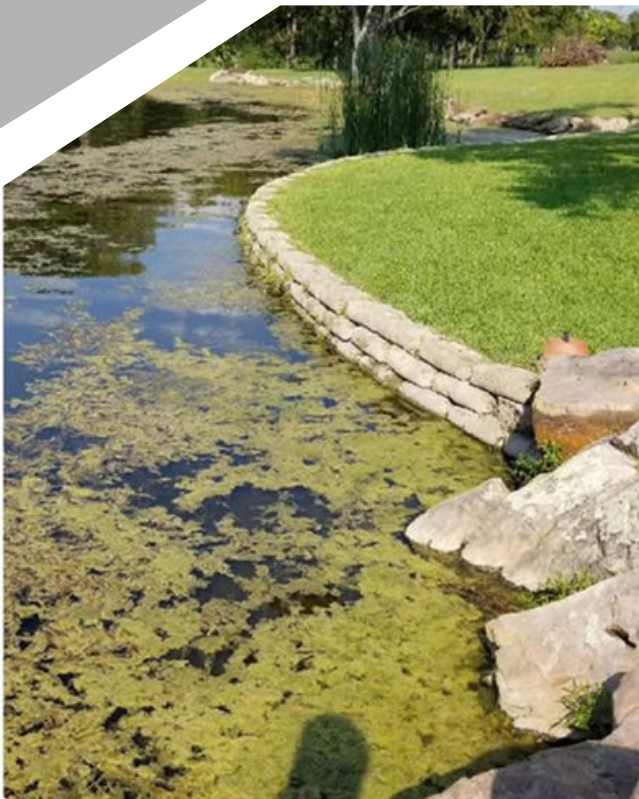




POND AND LAKE MANAGEMENT

UNCOMPLICATE YOUR OASIS:
WHERE BEAUTIFUL PONDS MEET EFFORTLESS
UPKEEP.



WWW.UFISHTX.COM

ENJOY YOUR POND AGAIN.

A lake or pond can be an asset or a liability on your property - depending on its condition. Since 1982, at Texas Fishing our strategy has been to focus on the holistic picture and the long-term health of your pond, considering not just the quick-fix, but the big picture. Our goal is to make your pond an oasis and a place that you can relax and share with family and friends rather than another item on your honey-do list.

Whether your lake or pond is in need of physical weed removal, biological control options, aeration or a fountain, or herbicidal treatment, we are prepared to serve our clients with excellence. All our services are fully in-house, never subcontracted. We are licensed and insured in all areas of practice.



GETTING STARTED

Initial visit and consult:

- Complete water testing with lab panel
- Bathymetry mapping
- Complete first treatment, if applicable

Follow-up:

- Develop an action plan and course of further treatment

Maintain:

- Once pond is under control, complete routine maintenance visits to keep it looking great



accredited member of
**SOCIETY OF
LAKE
MANAGEMENT
PROFESSIONALS**



- TDA Licensed Commercial Applicators
- Licensed Aquaculture Facility
- Exotic Species License Holders

YOUR MANAGEMENT TEAM



**Talia
Willner**

Team Lead &
Supervisor



**Brandon
Willner**

Physical
Removal
Specialist



**Kaleb
Smith**

Pond
Treatment
Specialist



**Joelly
Fitzgerald**

Pond
Treatment
Specialist



**Dillon
Fitzgerald**

Bathymetry
Specialist

Pricing Structure

Initial Consultation: \$500 within 25 miles of Caddo Mills

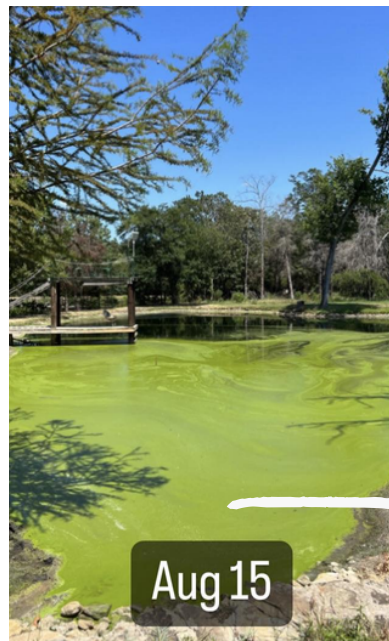
- Beyond 25 miles, additional mileage applies at \$3.75 per mile one-way beyond 25
- Water sample with complete lab panel and interpretation
- Bathymetry mapping and sediment depth measurements
- Vegetation identification
- Written action plan with suggested treatment schedule/cost estimates
- First treatment, if desired by client
 - Product cost is added to price of consult; average is \$100-200 per acre of pond, but will vary depending upon species and coverage levels of vegetation present. A cost estimate can be provided on-site before treatment.

Follow-Up and Routine Maintenance Treatments: \$250

within 25 miles of Caddo Mills

- Beyond 25 miles, additional mileage applies at \$3.75 per mile one-way beyond 25
- Cost of product is added to each treatment cost - this will be provided as a cost estimate after initial consultation
- As vegetation is reduced and controlled, product cost will continue going down
- Treatments include 1.5 hours of service - if additional hours are required (due to multiple ponds, ponds larger than 2 acres, etc) those hours are billed at \$125/hourly

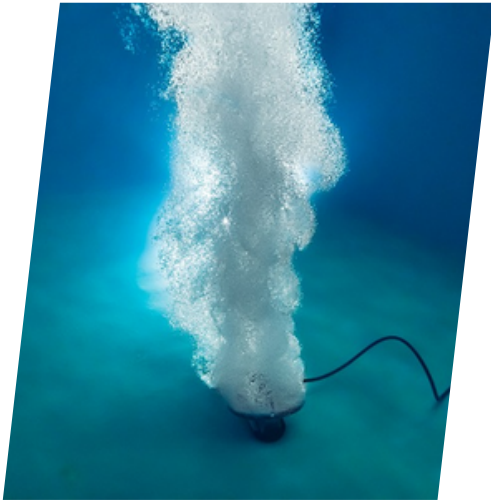
No Contracts. No Obligations. Only what your pond needs.



HOW CAN WE HELP?

Every lake and pond is different - and each property owner's goals are going to differ depending on their intended use for their water body. That said, our suggested course of action will vary from pond to pond, even if the problem has the same cause. It's all tailored to your goals - no control method is implemented without considering what each client desires. Our management techniques include:

- ▶ Biological controls (Triploid Grass Carp, Tilapia)
- ▶ Physical removal (excavation)
- ▶ Fountains, Surface Aerators, or Diffused Aeration Systems
- ▶ Pond Dyes
- ▶ Water Chemistry: Liming, Fertilizing, Gypsum Application
- ▶ Herbicide treatments



 **903-883-3976**

 **info@txfishingllc.com**

We are proud to be locally owned and operated by families right here in North Texas.



5490 FM 36 S
 CADDO MILLS TEXAS
 903-883-3976

INFO@TXFISHINGLLC.COM

WATER SAMPLE REPORT

INVOICE # ASSOCIATED

3434

DATE

4/13/2023

CUSTOMER

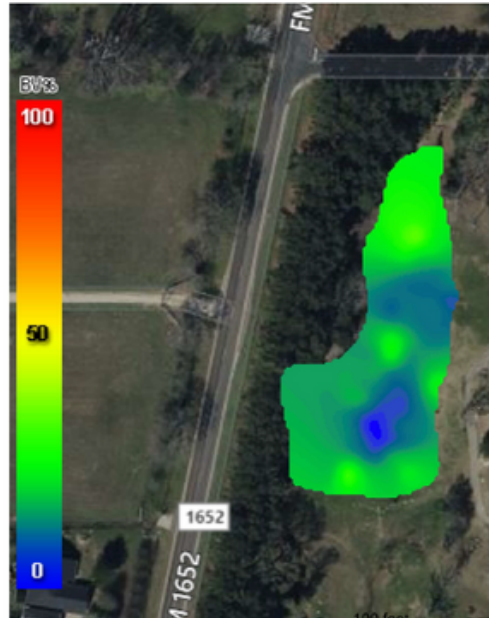
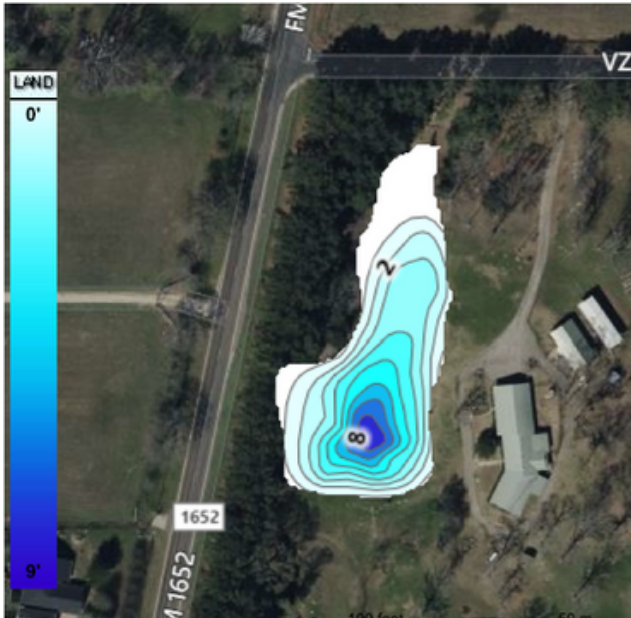
JOHN DOE
 1234 DEER TRAIL
 SOMEWHERE TEXAS
EXAMPLE@EXAMPLE.COM
 123-456-7890

PARAMETER ANALYZED	RESULTS	UNITS	METHOD	DESIRABLE RANGE	ACCEPTABLE RANGE
CALCIUM	11	PPM	ICP	>20	>5
MAGNESIUM	2	PPM	ICP		
SODIUM	82	PPM	ICP		
POTASSIUM	7.0	PPM	ICP		
BORON	0.27	PPM	ICP		
CARBONATE	0	PPM	Titr.		
BICARBONATE	156	PPM	Titr.		
SULFATE	19	PPM	ICP	0-1000	
CHLORIDE	53	PPM	Titr.		
NITRATE	0.21	PPM	Cd-red.	<10	<50
PHOSPHORUS	0.23	PPM	ICP	~.05	
pH	6.78		ISE	6.5-9	5.5-10
CONDUCTIVITY	374	umhos/cm	Cond.	60-2,000	30-5,000
HARDNESS	37	ppm CaCO3	Calc.	50-150	>20
ALKALINITY	128	ppm CaCO3	Calc.	50-150	20-400
TOTAL DISSOLVED SALTS	331	ppm	Calc.	<3,000	<10,000
SAR	5.90		Calc.		
CHARGE BALANCE	100		Calc.		

NOTES

Water has extremely high phosphorous levels. Phosphorus levels as low as 0.025 ppm are enough to stimulate harmful algae blooms. Too much phosphorus can cause high levels of growth of algae/other nuisance aquatic plants, which can result in decreased levels of dissolved oxygen and possibly even fish kill events. Treatments are available to remove excess phosphorus from the water column, enabling it to settle to an environmentally harmless state.

**Example of our Water Panel & Lab Report
 (included in initial consultation)**



Survey Statistics	
Average Water Temperature:	59.2 °F
Survey Area:	0.789 acres
Survey Volume:	2.342 acre ft
Percent of Waterbody Surveyed:	99.2%
Waterbody Area:	0.795 acres
Estimated Waterbody Volume	2.361 acre ft

Biovolume Analysis by Quintiles

Type	0 - 20%	20 - 40%	40 - 60%	60 - 80%	80 - 100%
Point	90.4%	5.8%	0.5%	0%	3.3%
Grid	69.5%	30.5%	0%	0%	0%

Biovolume Analysis by Depth

Type	Depth	Count	PAC	Avg BVp	SD BVp	Avg BVw	SD BVw
Point	0 - 1 m	88	88.0%	18.9%	± 24.1%	16.6%	± 24.0%
	1 - 2 m	335	83.1%	15.8%	± 18.1%	13.1%	± 17.9%
	2 - 3 m	47	35.1%	9.7%	± 8.1%	3.4%	± 5.1%
	3 - 4 m	0	0%	0%	± 0%	0%	± 0%
	4 - 5 m	0	0%	0%	± 0%	0%	± 0%
	5 - 6 m	0	0%	0%	± 0%	0%	± 0%
	6 - 7 m	0	0%	0%	± 0%	0%	± 0%
	7 - 8 m	0	0%	0%	± 0%	0%	± 0%
	8 - 9 m	0	0%	0%	± 0%	0%	± 0%
	9 m +	0	0%	0%	± 0%	0%	± 0%

Example of Bathymetry & Vegetation Heat Mapping (included in initial consultation)