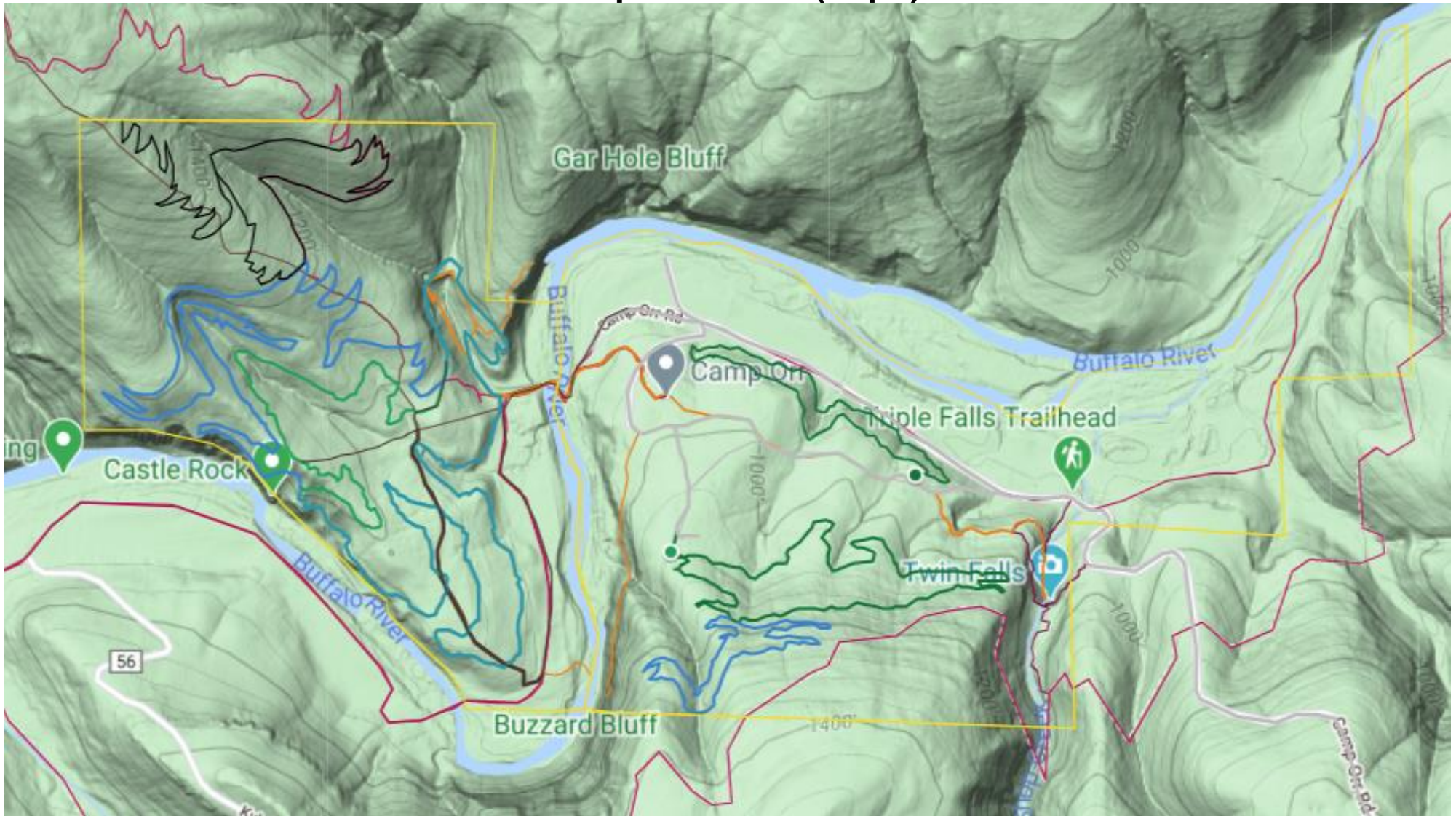
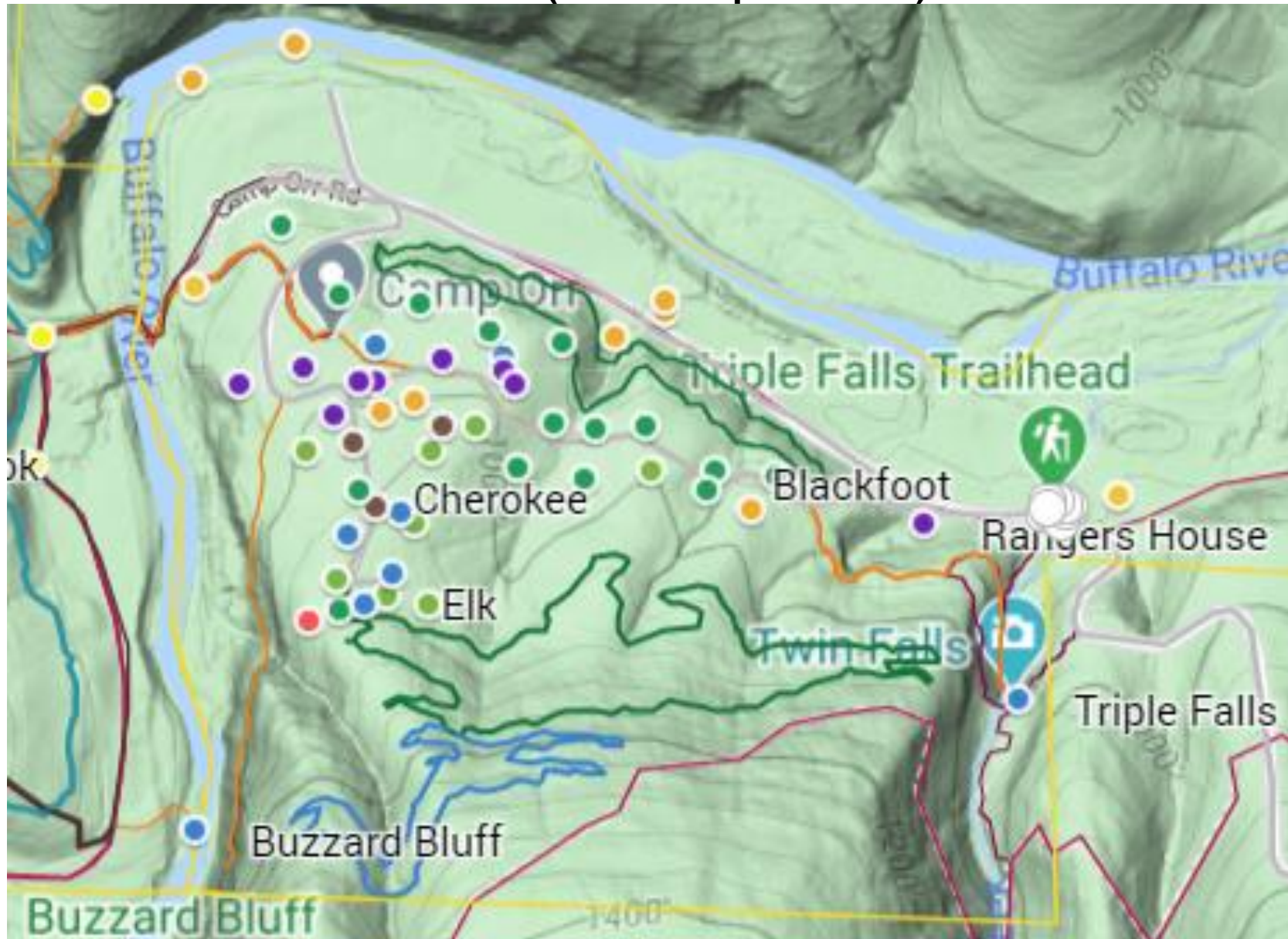


Camp Orr Trails (Topo)



- Camp Orr property Boundaries = Yellow
- Buffalo River Trails = Red
- Triple Falls Trails = Dark Red
- Mountain Biking Trails = Green, Blue, and Black
- Hiking Trails = Orange
- Old Logging Roads = Brown

East Side (Main Camp Orr Area)



Hiking Trails

- 0.13 Miles (665 ft) Parking to Bottom of Falls
- 0.19 Miles (1,024 ft) Trail to Top of Falls
- 0.14 Miles (742 ft) Top of Falls to BRT
- 0.64 Miles – Flagpole to Bottom of Twin Falls

Mountain Biking Trails

- 0.91 Miles – Green Lower Bike
- 1.34 Miles – Green Upper Loop
- 0.94 Miles – Blue East Bike
- 0.68 Miles – Rd Through Camp to Upper East Trails
- 0.83 Miles – Rd Triple Falls Parking to River Crossing
- 0.62 Miles – Rd Upper East to River
- 5.32 Miles on East Side**

West Side – Camp Orr Trails (Ultimate Adventure)



Hiking Trails

0.52 Miles – Living History to Flagpole

1.62 Miles – Kyles to Flagpole

Mountain Biking Trails

1.94 Miles – Blue Lower West

0.90 Miles – Blue Connector

2.15 Miles – Blue Upper West

1.06 Miles – Black Bike Trail

0.63 Miles – Black Out & Back (no loop)

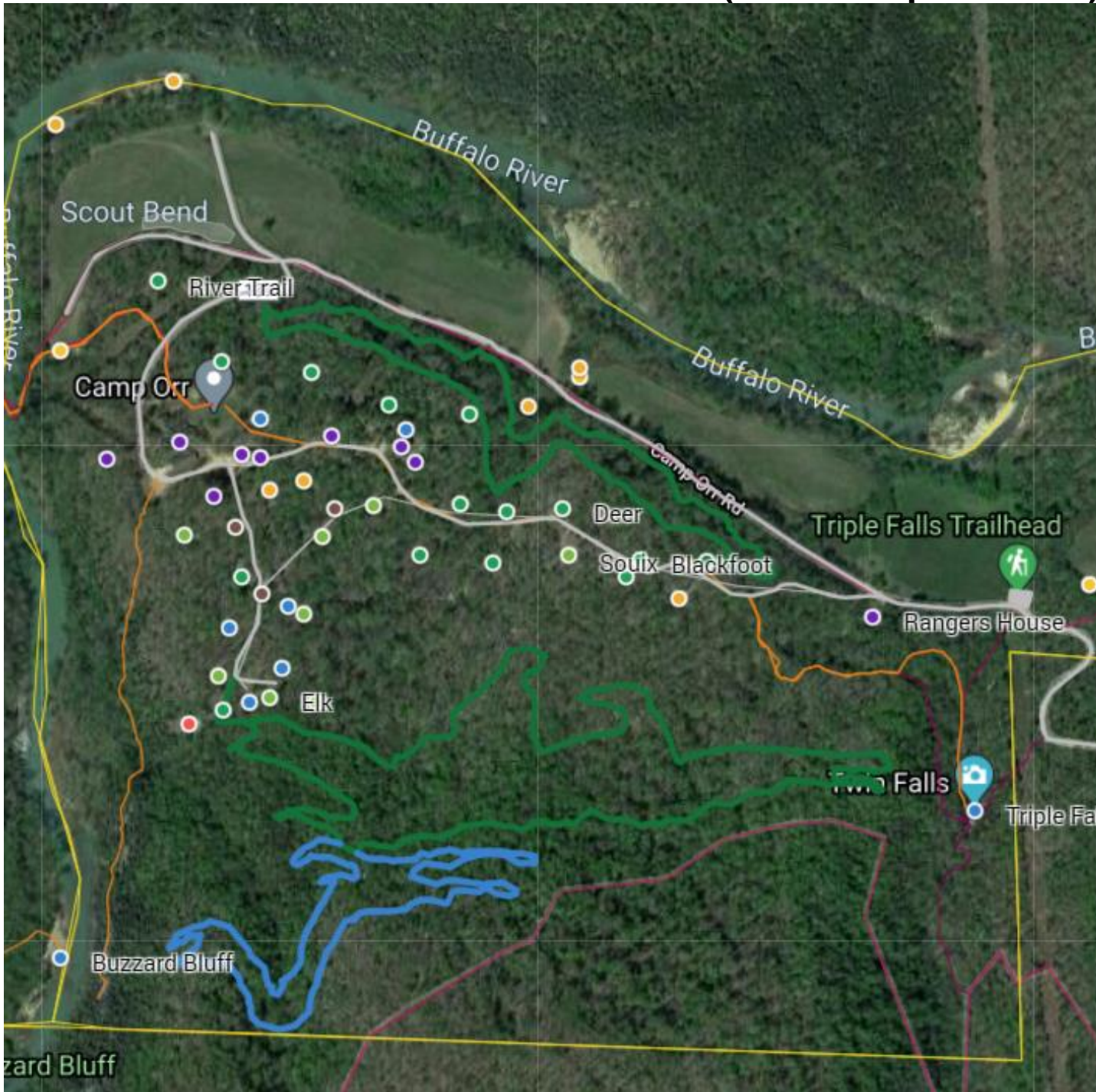
6.68 Miles on West Side

Camp Orr Trails Map (Satellite)



- Camp Orr property Boundaries are in Yellow
- Buffalo River Trails are in Red
- Triple Falls Trails in Dark Red
- Mountain Biking Trails are in Green, Blue, and Black
- Hiking Trails in Orange
- Old Logging Roads in Brown

East Side Trails (Main Camp Orr Area)



Hiking Trails

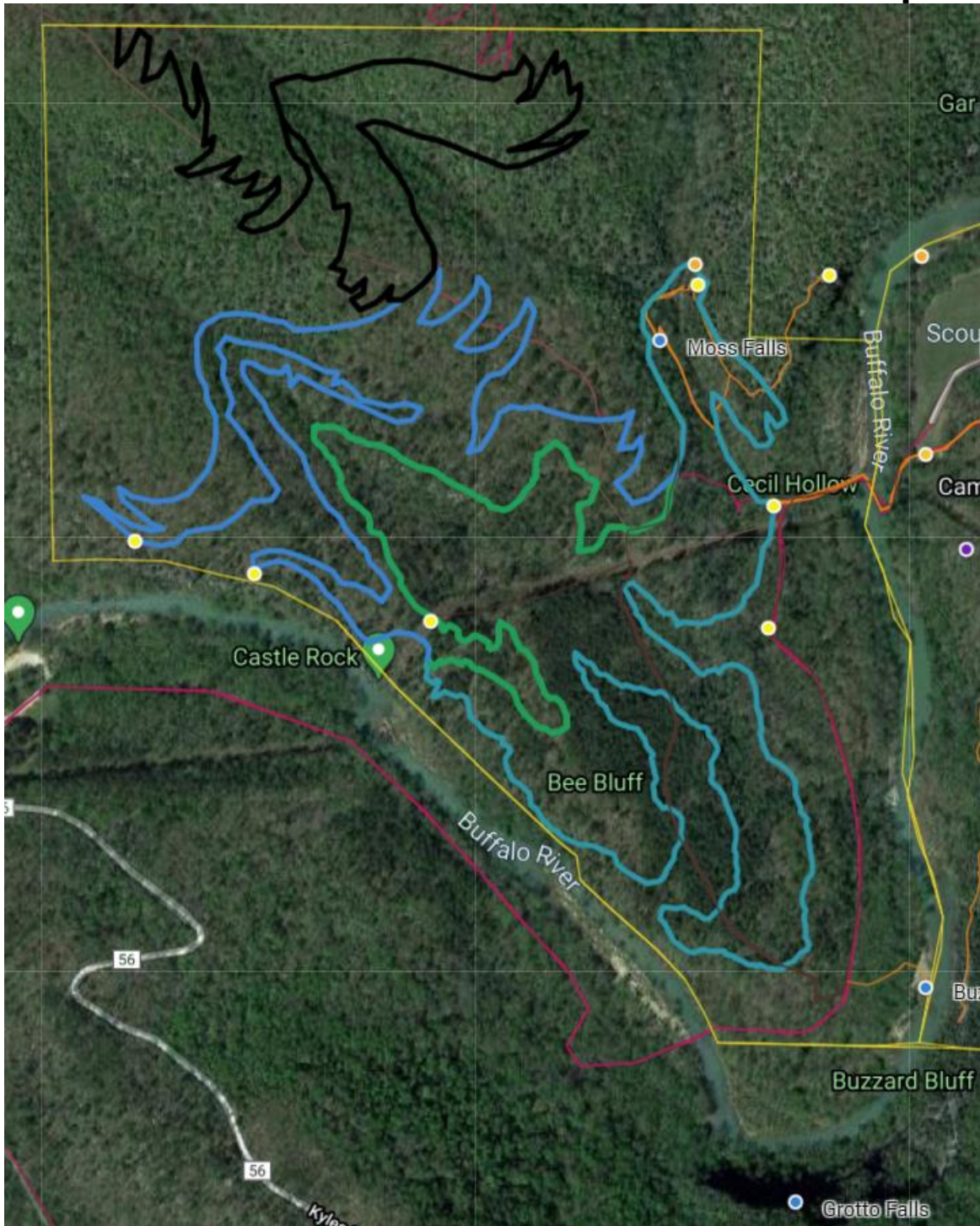
- 0.13 Miles (665 ft) Parking to Bottom of Falls
- 0.19 Miles (1,024 ft) Trail to Top of Falls
- 0.14 Miles (742 ft) Top of Falls to BRT
- 0.64 Miles – Flagpole to Bottom of Twin Falls

Mountain Biking Trails

- 0.91 Miles – Green Lower Bike
- 1.34 Miles – Green Upper Loop
- 0.94 Miles – Blue East Bike
- 0.68 Miles – Rd Thru Camp to Upper Trails
- 0.83 Miles – Rd T. Falls to River Crossing
- 0.62 Miles – Rd Upper East to River

5.32 Miles on East Side

West Side – Camp Orr Trails



Hiking Trails

0.52 Miles – Living History to Flagpole

1.62 Miles – Kyles to Flagpole

Mountain Biking Trails

1.94 Miles – Blue Lower West

0.90 Miles – Blue Connector

2.15 Miles – Blue Upper West

1.06 Miles – Black Bike Trail

0.63 Miles – Black Out & Back (no loop)

6.68 Miles on West Side