

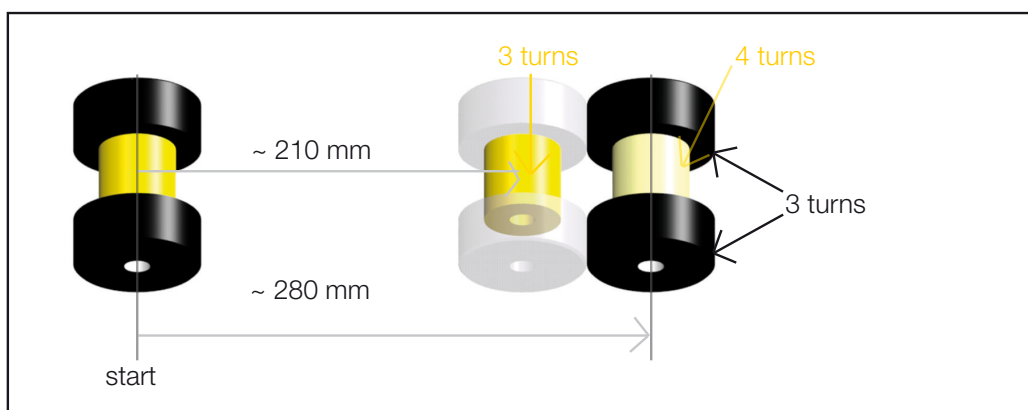
PRODUCT PORTFOLIO ps:[®]wheel 04/2023
SYSTEM TRUMPF, THICK TURRET & SALVAGNINI

ps:[®]wheel

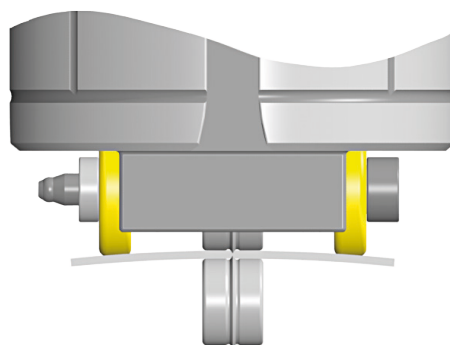
FOR SYSTEM TRUMPF, THICK TURRET & SALVAGNINI

Thanks for your interest in a **ps:[®]wheel** tool produced by PASS Stanztechnik AG. We have produced this tool for the TRUMPF, THICK TURRET, and SALVAGNINI systems.

Wheel tools are specific to the tooling system. The operation of our patented segmented wheels offers an enormous advantage over our competitors. Each wheel operates individually to maintain the proper rotational speed and contact with the sheet, without impacting the other wheels. The result is less friction, greatly reduced sheet warpage, and increased longevity of the tool.



All ps:[®]wheel tools are also supplied with our robust integrated lubrication system and special coated shafts. In turn, this allows for a smooth-running operation of all ps:[®]wheel tools. Fine tuning is also possible by using additional support wheels, typically in the upper part of the tool. Warpage will also continue to decrease with this method.



We are here to help answer any of your questions. Please contact us if you need anything.

PASS Tooling

SYSTEM TRUMPF

ps:®wheel-cut-sl	page 4
ps:®wheel-crowning	page 5
ps:®wheel-offset	page 6
ps:®wheel-pincher	page 7
ps:®wheel-louver	page 8
ps:®wheel-chamfer-V2	page 9
ps:®wheel-beading	page 10

SYSTEM THICK TURRET

ps:®wheel-knock-out-sl	page 12
ps:®wheel-cut-sl	page 13
ps:®wheel-offset	page 14
ps:®wheel-notch	page 15
ps:®wheel-pincher	page 16
ps:®wheel-cut	page 17
ps:®wheel-beading	page 18

SALVAGNINI

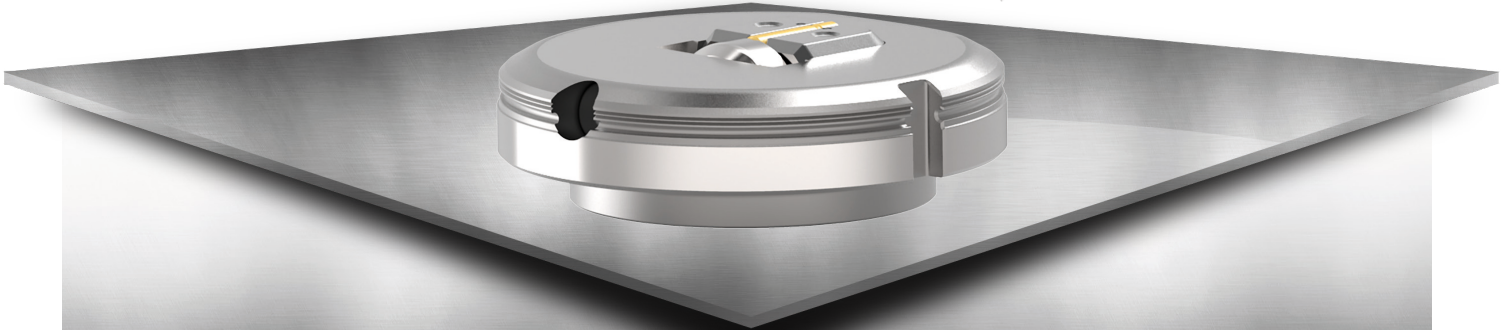
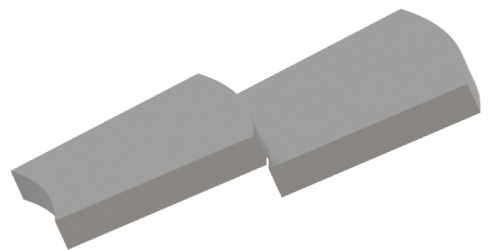
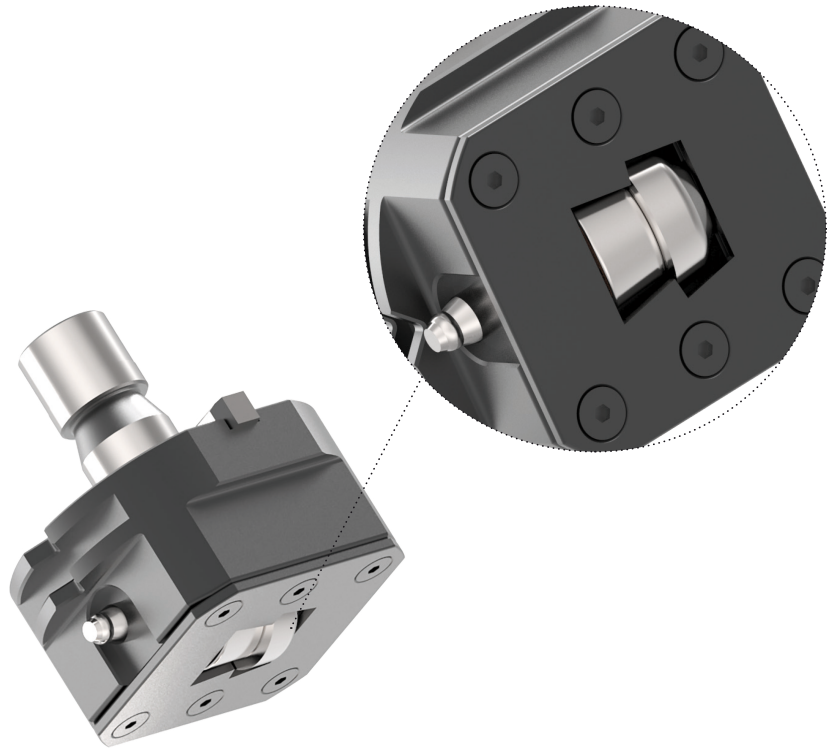
ps:®wheel-beading	page 20
-------------------------	---------

ps:[®]wheel-cut-sl

FOR MACHINE TYPE TRUMPF

TRUMPF

- fast and effective slitting cuts with wheel tools
- individual design (min. radius $r = 75,0$ mm)
- clean, waste-free slitting cut
- long-lasting lifetime of the cutting wheels due to X3-PM design
- for sheet materials aluminium, steel, stainless steel
- for sheet thickness $s = 0,8$ up to $1,5$ mm (stainless steel $s = 0,8$ up to $1,2$ mm)



patented
EP 1,688,195
US 7,343,767

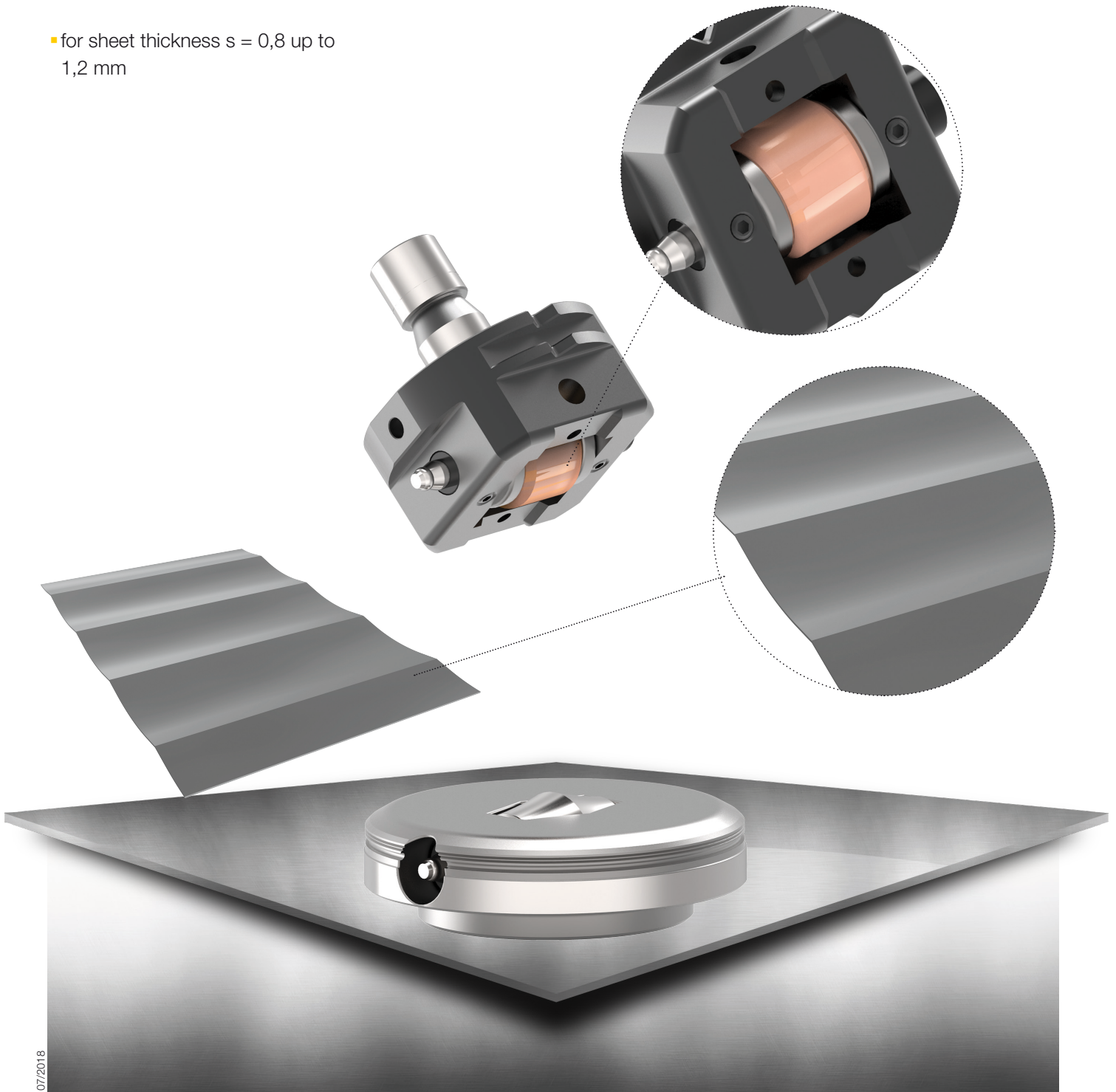
11/2020

ps:[®]wheel-crowning

FOR MACHINE TYPE TRUMPF

TRUMPF

- for production of corrugated metal sheets or peaks in sheets
- for sheet materials
aluminium, steel, stainless steel
- for sheet thickness $s = 0,8$ up to $1,2$ mm



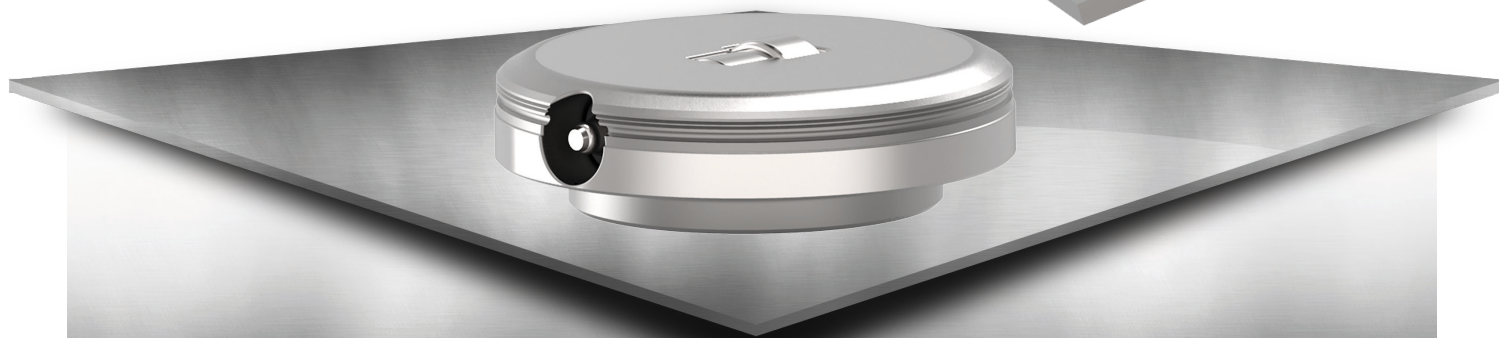
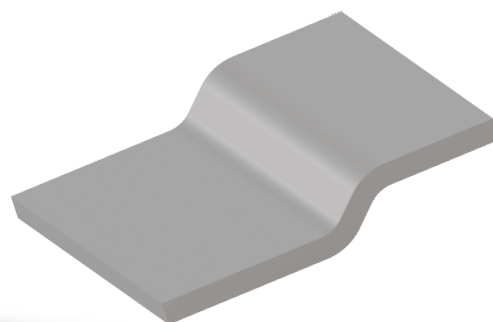
07/2018

ps:[®]wheel-offset

FOR MACHINE TYPE TRUMPF

TRUMPF

- for optimised production of offsets
- perfect operating characteristics due to the shafts coated with a special lubrication
- working with close radius possible
- for different sheet materials and thicknesses
- no chatter marks
- dimensions according to customer requirements
- reduced warpage because of differential effect (segmented wheels)
- integrated lubrication



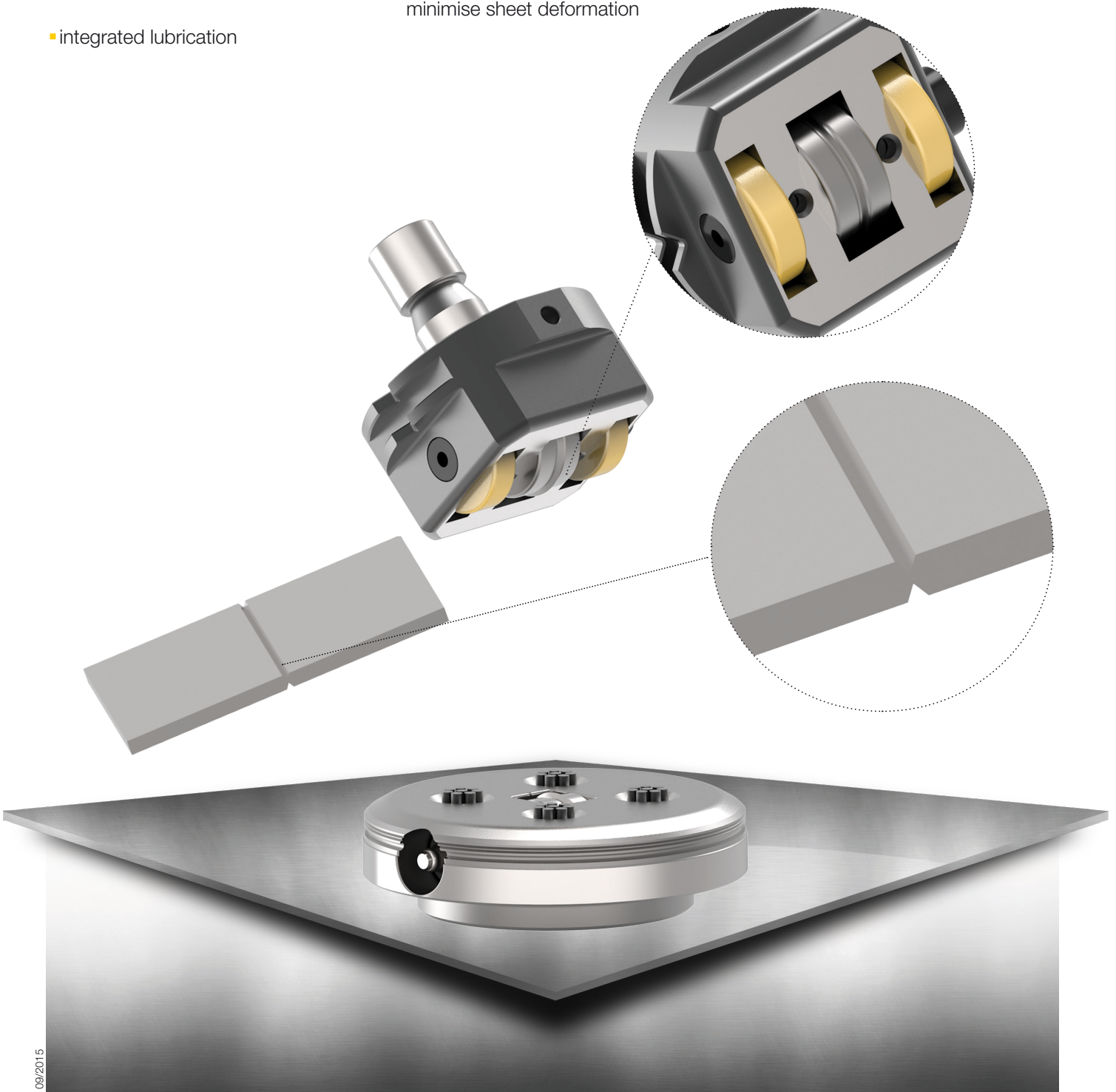
patented
EP 1,688,195
US 7,343,767

09/2016

ps:[®]wheel-pincher FOR MACHINE TYPE TRUMPF

TRUMPF

- for subsequent manual or automated slittings of sheets
- for different sheet materials and thicknesses
- integrated lubrication
- perfect operating characteristics due to the shafts coated with a special lubrication
- with additional support wheels to minimise sheet deformation



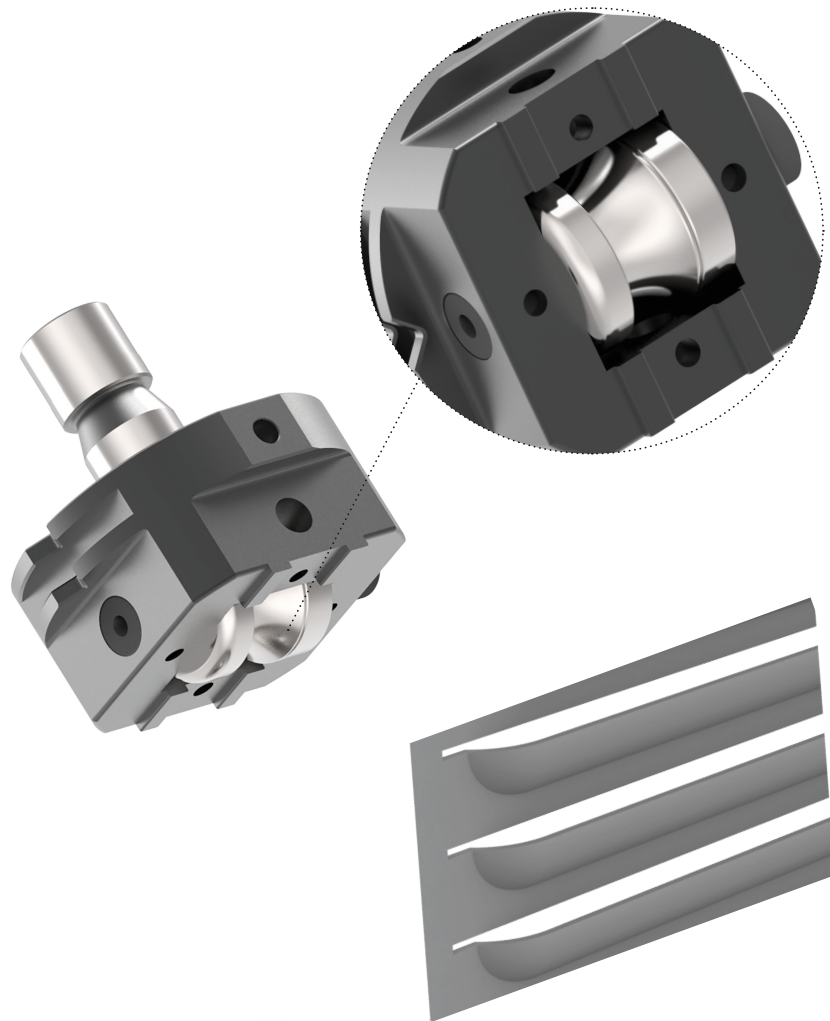
09/2015

ps:[®]wheel-louver

FOR MACHINE TYPE TRUMPF

TRUMPF

- for production of continuous louvers with high speed
- active die necessary
- pre-punch necessary
- no nibbling marks



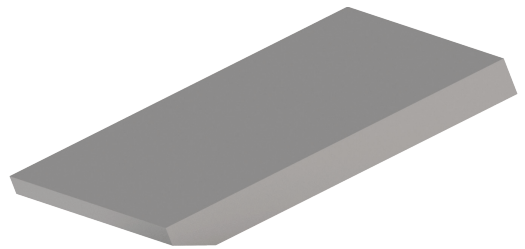
05/2014

ps:® wheel-chamfer-V2

FOR MACHINE TYPE TRUMPF

TRUMPF

- for sheet materials
aluminium, steel, stainless steel
- for sheet thickness up to $s = 0,4 \text{ mm}$
- perfect operating characteristics
due to the shafts coated with a
special lubrication
- dimensions according to customer
requirements
- no chatter marks
- working with close radius possible
- integrated lubrication



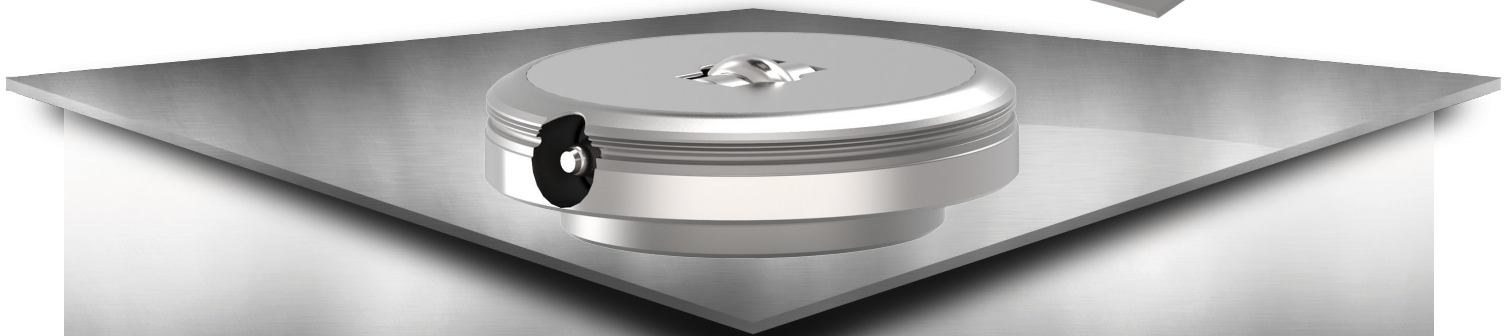
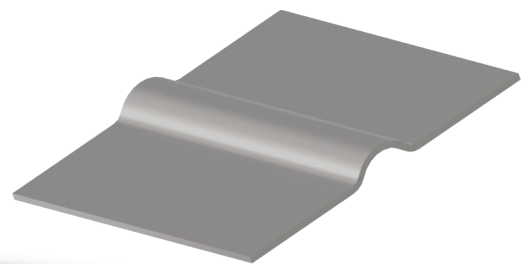
12/2009

ps:[®]wheel-beading

FOR MACHINE TYPE TRUMPF

TRUMPF

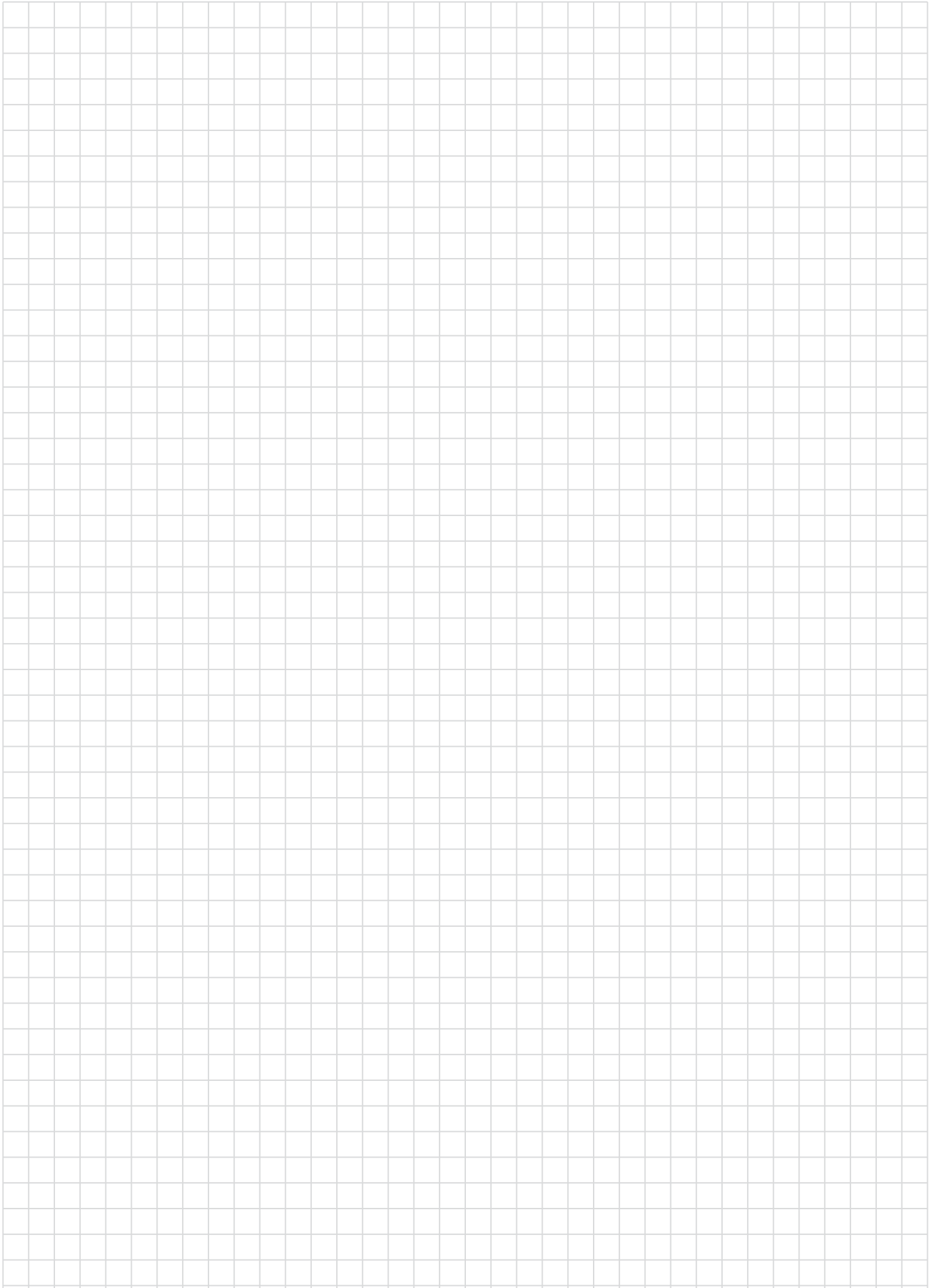
- reduced warpage because of differential effect (segmented wheels)
- perfect operating characteristics due to the shafts coated with a special lubrication
- dimensions according to customer requirements
- no chatter marks
- working with close radius possible
- integrated lubrication
- for different sheet materials and thicknesses



patented
EP 1,688,195
US 7,343,767

03/2005

NOTES

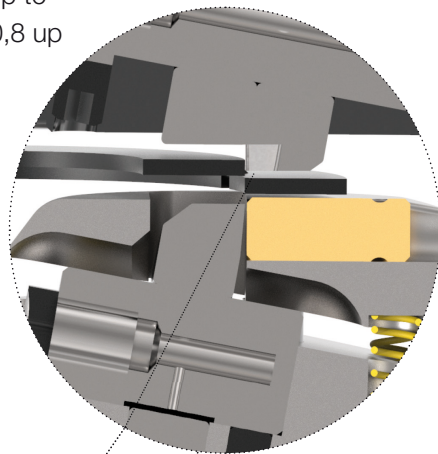


ps:® wheel-knock-out-sl

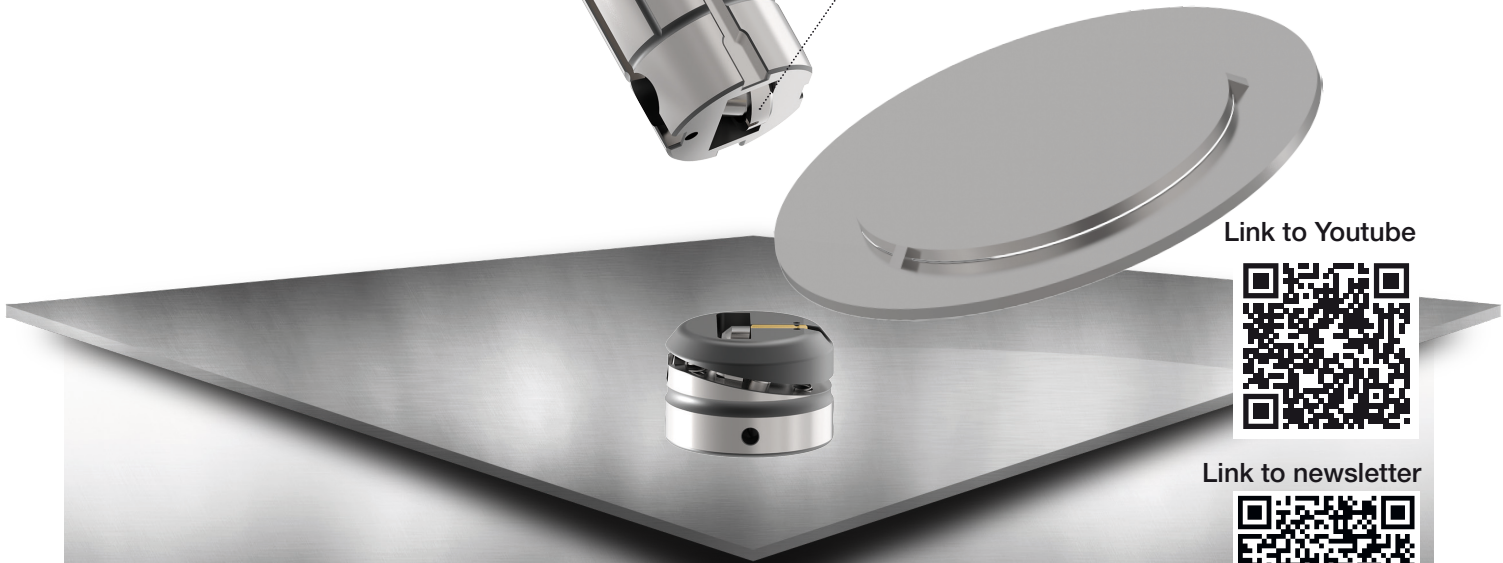
FOR MACHINE TYPE THICK TURRET

THICK TURRET

- shape- and size-independent tool for flexible on-site knock-outs
- flexible diameters with only ONE tool (from $d = 150,0$ mm)
- individual design (min. radius $r = 75,0$ mm)
- long-lasting lifetime of the cutting wheels due to X3-PM design
- several connections possible
- time savings as no tool change is necessary
- cost savings, as only one tool is needed for different diameters
- for sheet thickness $s = 0,8$ up to $1,5$ mm (stainless steel $s = 0,8$ up to $1,2$ mm)
- easy programming - as a wheel tool
- for sheet materials aluminium, steel, stainless steel



1 relief per wheel = 91,1 mm distance
2 reliefs per wheel = 45,55 mm distance, etc.



Link to Youtube



Link to newsletter



patented
EP 1,688,195
US 7,343,767

12/2020

ps:[®]wheel-cut-sl

FOR MACHINE TYPE THICK TURRET

- fast and effective slitting cuts with wheel tools
- long-lasting lifetime of the cutting wheels due to X3-PM design
- for sheet thickness $s = 0,8$ up to $1,5$ mm (stainless steel $s = 0,8$ up to $1,2$ mm)
- individual design (min. radius $r = 75,0$ mm)
- for sheet materials aluminium, steel, stainless steel
- clean, waste-free slitting cut



THICK TURRET

patented
EP 1,688,195
US 7,343,767

Link to newsletter

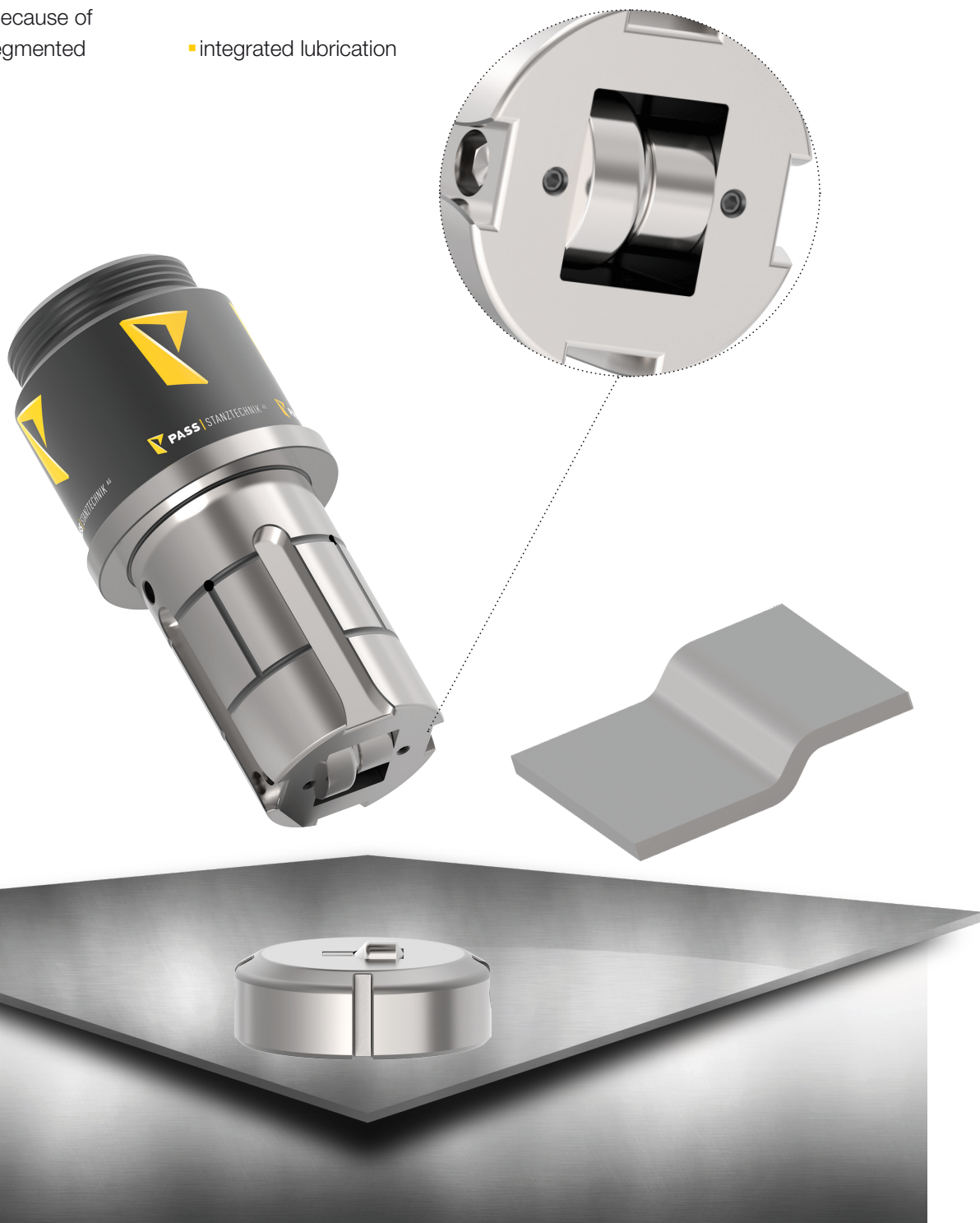


ps:® wheel-offset

FOR MACHINE TYPE THICK TURRET

THICK TURRET

- for optimised production of offsets
- perfect operating characteristics due to the shafts coated with a special lubrication
- working with close radius possible
- for different sheet materials and thicknesses
- no chatter marks
- dimensions according to customer requirements
- reduced warpage because of differential effect (segmented wheels)
- integrated lubrication



patented
EP 1,688,195
US 7,343,767

09/2016

ps:[®]wheel-notch

FOR MACHINE TYPE THICK TURRET

- for subsequent manual or automated bending of sheets
- for different sheet materials and thicknesses
- integrated lubrication
- perfect operating characteristics due to the shafts coated with a special lubrication
- with additional support wheels to minimise sheet deformation



THICK TURRET

ps:[®]wheel-pincher

FOR MACHINE TYPE THICK TURRET

THICK TURRET

- for subsequent manual or automated slittings of sheets
- for different sheet materials and thicknesses
- integrated lubrication
- perfect operating characteristics due to the shafts coated with a special lubrication
- with additional support wheels to minimise sheet deformation



09/2015

ps:[®]wheel-cut

FOR MACHINE TYPE THICK TURRET

- fast and effective slitting cuts with wheel tools
- long-lasting lifetime of the cutting wheels due to X3-PM design
- for sheet thickness $s = 0,8$ up to $1,5$ mm (stainless steel $s = 0,8$ up to $1,2$ mm)
- individual design (min. radius $r = 75,0$ mm)
- for sheet materials aluminium, steel, stainless steel
- forming station necessary
- clean, waste-free slitting cut



THICK TURRET

patented
EP 1,688,195
US 7,343,767

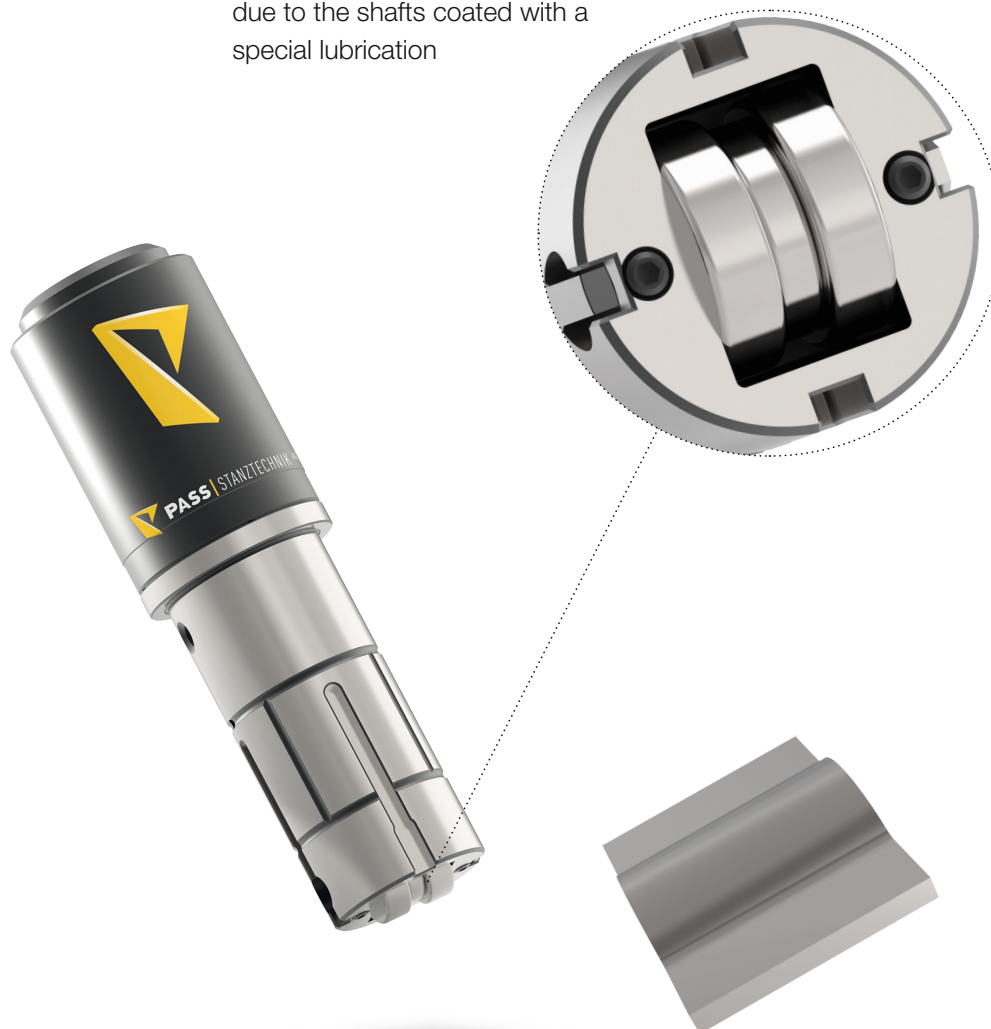
09/2013

ps:[®]wheel-beading

FOR MACHINE TYPE THICK TURRET

THICK TURRET

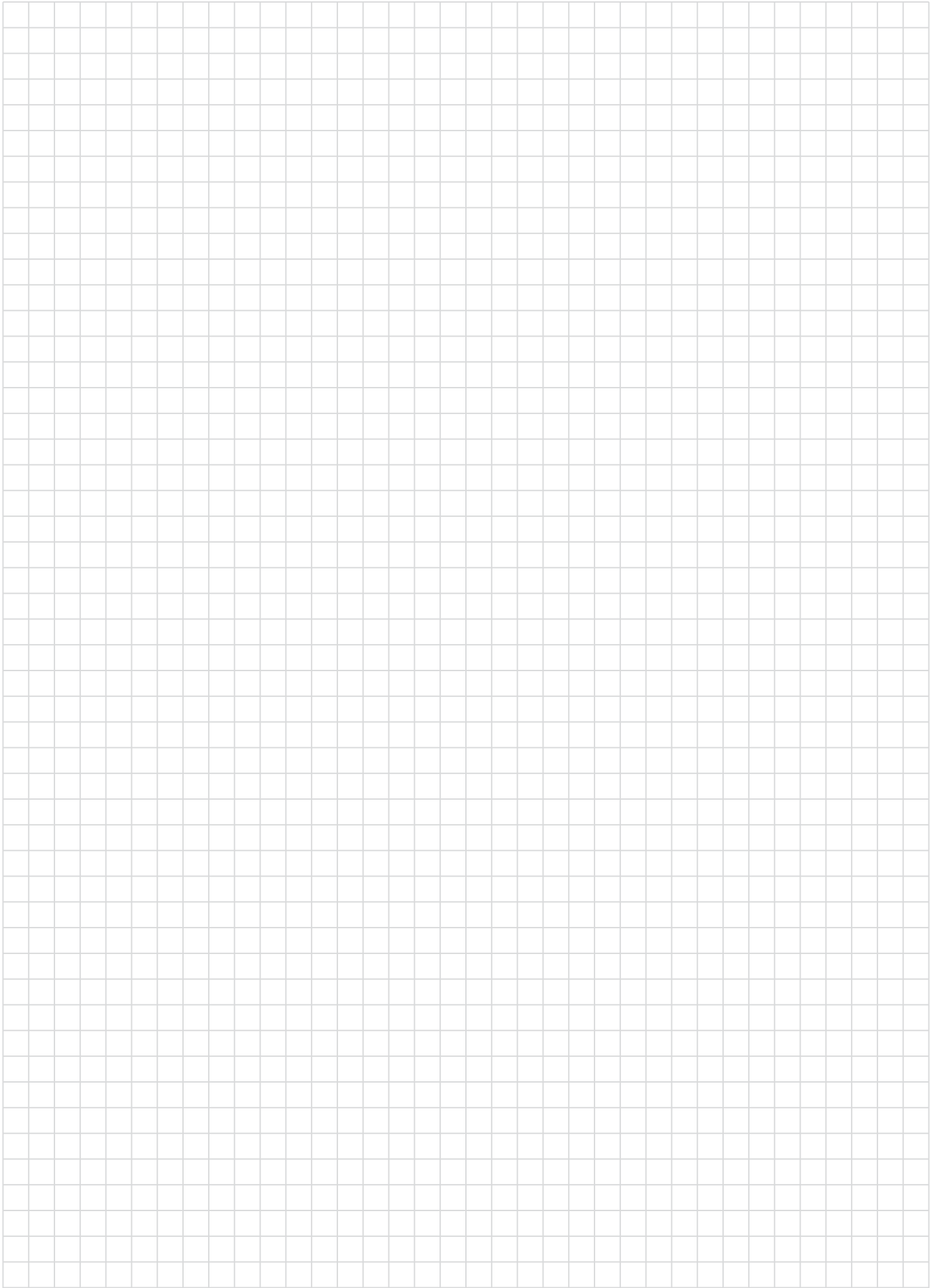
- production of reinforced beads
- reduced warpage because of differential effect (segmented wheels)
- no chatter marks
- integrated lubrication
- working with close radius possible
- perfect operating characteristics due to the shafts coated with a special lubrication
- dimensions according to customer requirements
- for different sheet materials and thicknesses



patented
EP 1,688,195
US 7,343,767

03/2005

NOTES



ps:[®]wheel-beading

FOR MACHINE TYPE SALVAGNINI

- reduced warpage because of differential effect (segmented wheels)
- no chatter marks
- integrated lubrication
- working with close radius possible
- perfect operating characteristics due to the shafts coated with a special lubrication
- dimensions according to customer requirements
- for different sheet materials and thicknesses

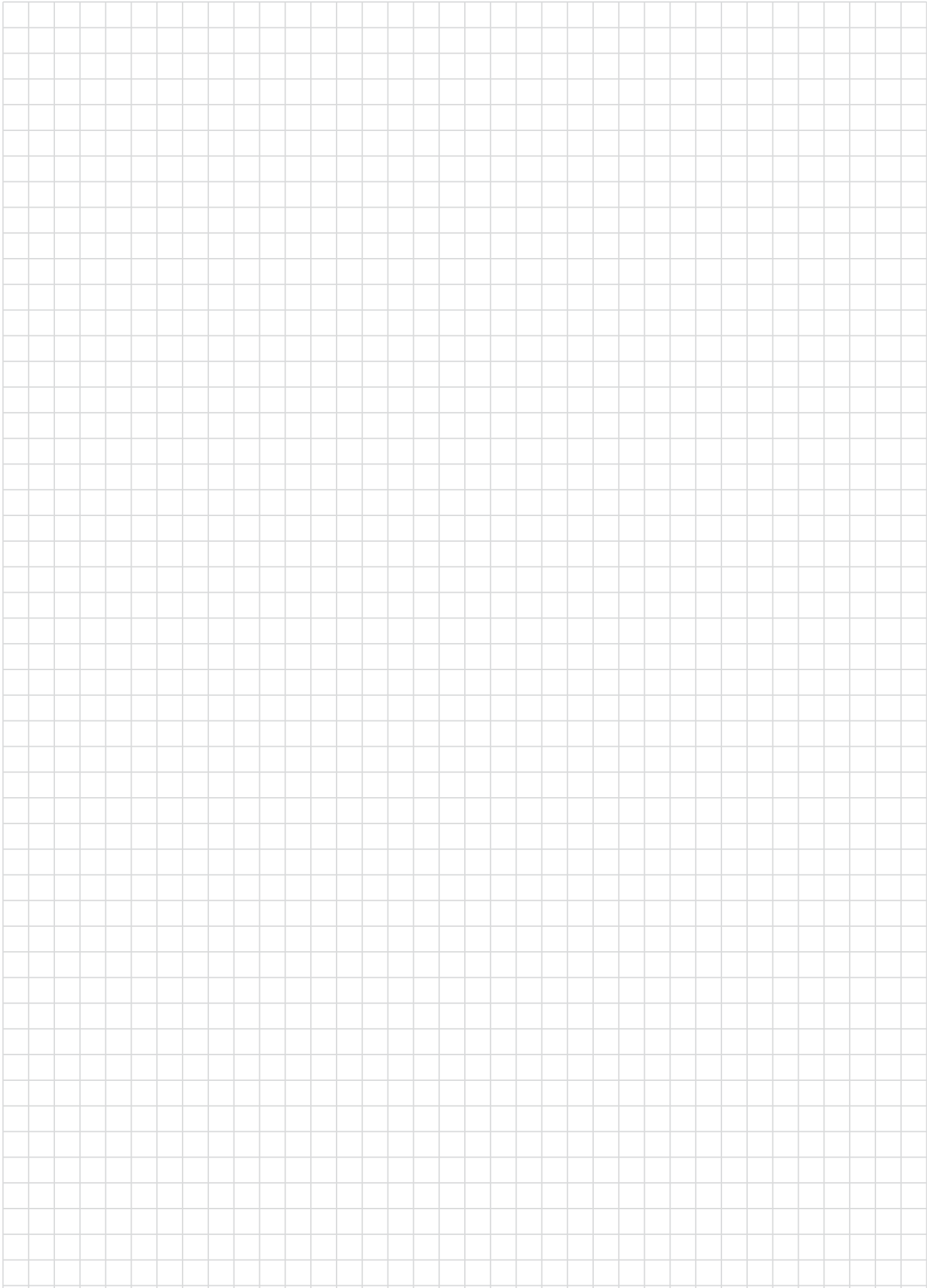


SALVAGNINI

patented
EP 1,688,195
US 7,343,767

03/2005

NOTES

A large grid of graph paper for taking notes, consisting of 20 columns and 40 rows of small squares.

A large grid of graph paper for taking notes, consisting of 20 columns and 40 rows of small squares.

SALVAGNINI | THICK TURRET | TRUMPF



5170 N 126th St
Butler, WI 53007 | USA

WEB: www.passtooling.com
EMAIL: sales@passtooling.com

PHONE: 262-307-2209