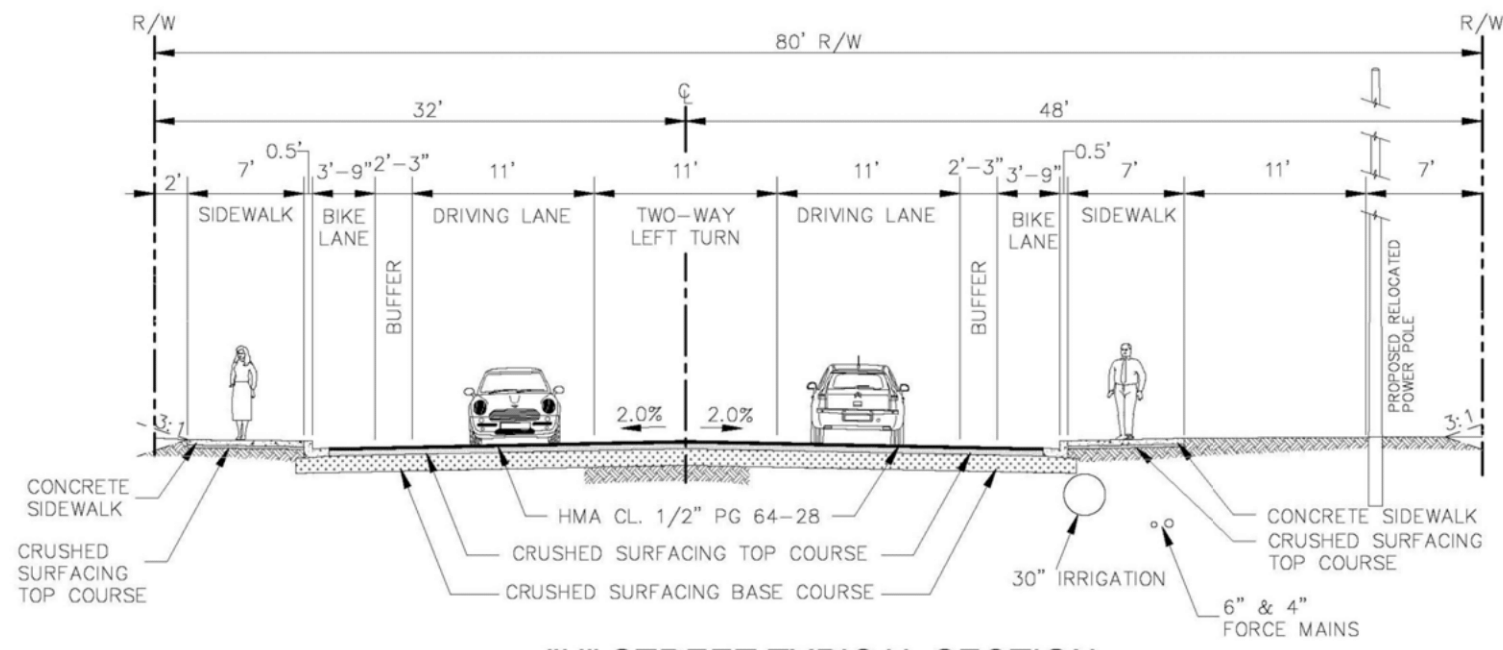


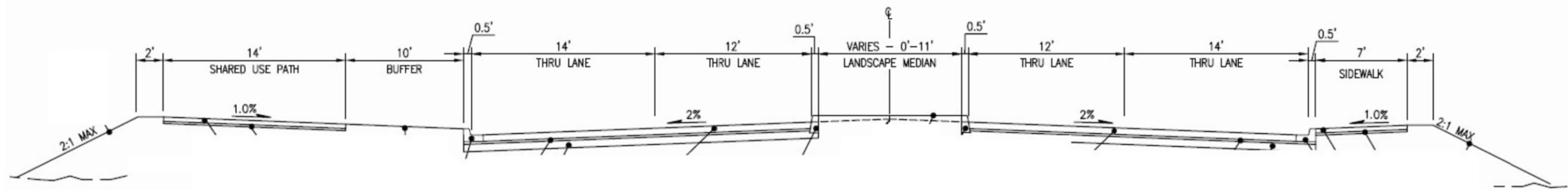
- | | | | |
|--|---------------------------|--|-------------------------|
| | Modified Existing Roadway | | Shared-Use Path |
| | New Roadway | | Sidewalks |
| | Bridges | | Stormwater Ponds |
| | Driveways | | ELJ |
| | Medians | | Floodplain Channels |
| | Railroad Crossing | | Floodplain Grading Area |
| | Roundabouts | | |

Figure 2. Project Elements
East-West Corridor

Yakima
 Yakima County, WA
 Sections 13, 17, 18
 Township 13N, Ranges 18E, 19E

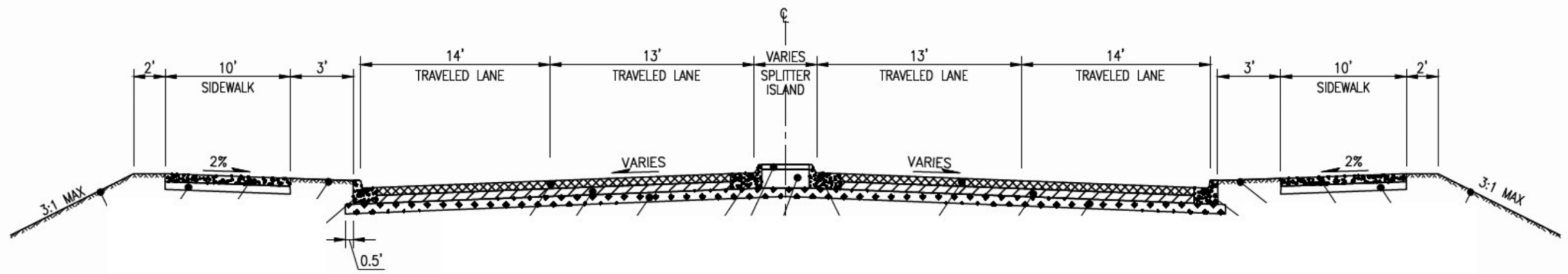


"H" STREET TYPICAL SECTION



TYPICAL ROADWAY SECTION

MILL PARKWAY 87+84.52 TO 102+70.29
NTS



Bravo Blvd.
506+00 TO 509+50
NTS

Figure 3. Typical Sections
East-West Corridor

Yakima
Yakima County, WA
Sections 13, 17, 18
Township 13N, Ranges 18E, 19E

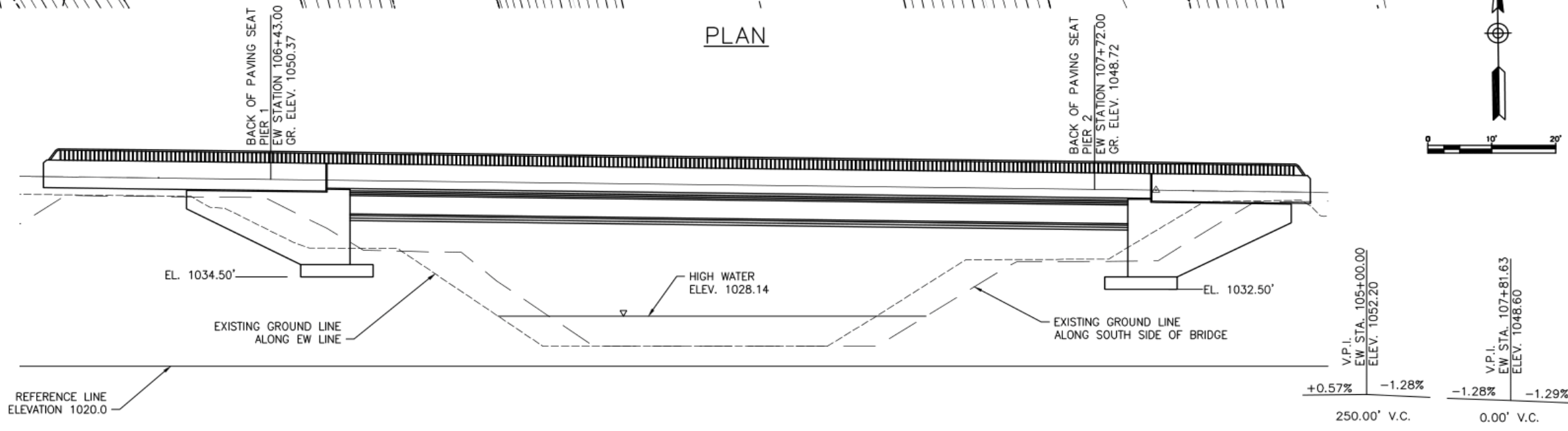
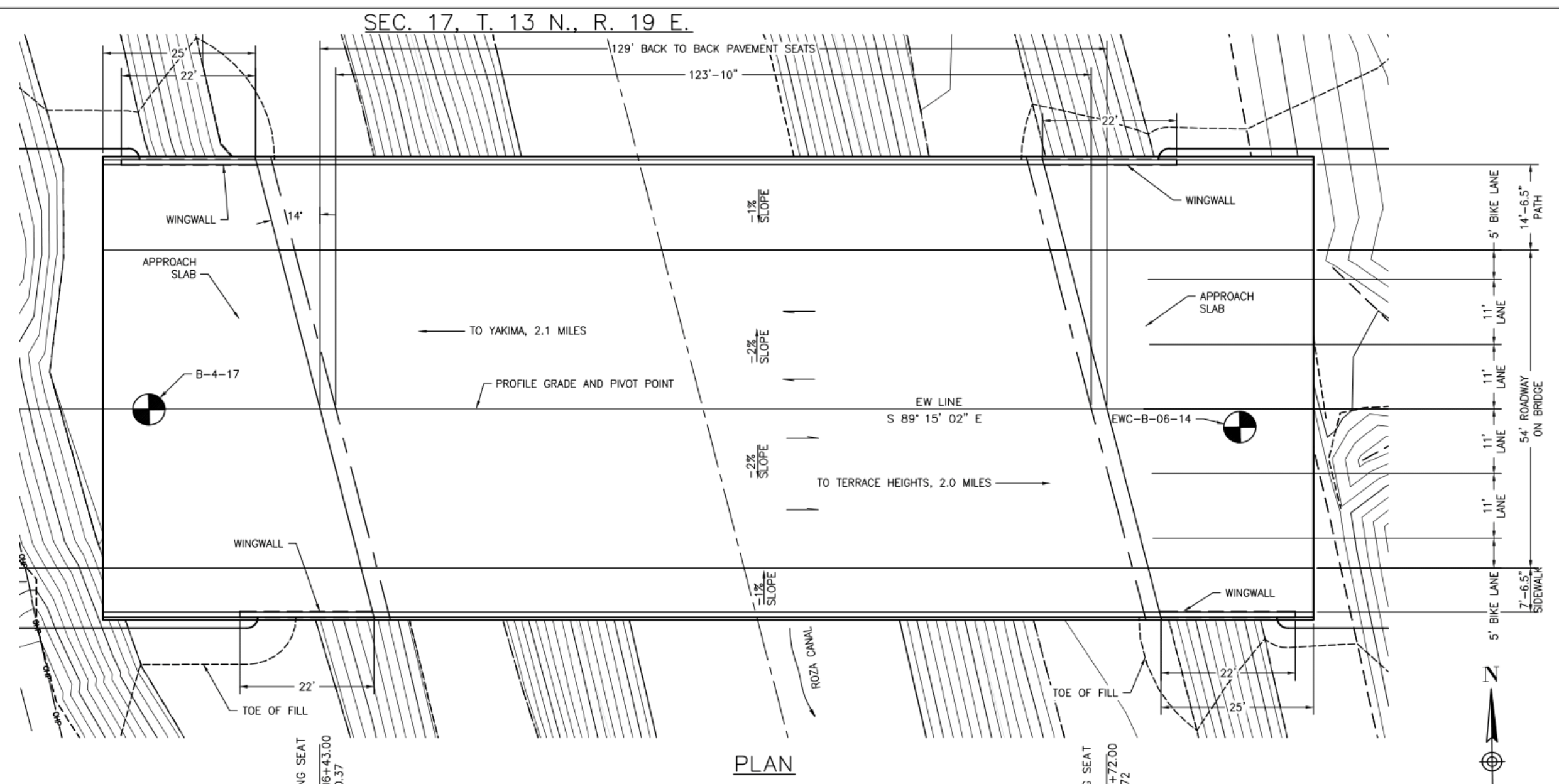
Plotted: May 26, 2021 - 12:40 JessicaS \\fileserv\Files\20Files\A20165.00 Cascade Mill Parkway\Roza Canal Drawings\Roza Canal.dwg Layout Name: BRIDGE LAYOUT xrefs: Titlesht

DATUM
NAVD 1988



P.C. GIRDERS (WF58G)
LOADING: HL-93

GRADE ELEVATIONS SHOWN ARE FINISH GRADES ALONG EW LINE AND ARE EQUAL TO THE PROFILE GRADE.



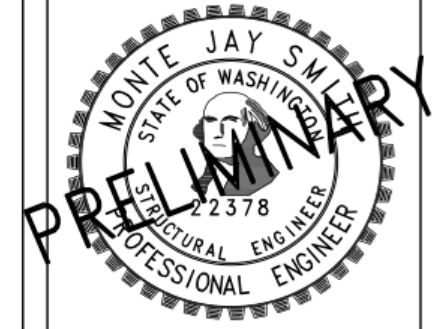
DO NOT SCALE REDUCED SHEETS



CASCADE MILL
CORRIDOR
PROJECT
PHASE 2

CRP#

PREPARED UNDER
THE DIRECTION OF:



COUNTY ENGINEER
DATE:

PROJECT ENGINEER: M J SMITH	
DRAWN: M. SMITH	CHECKED BY: -
REVISION:	
FNAME: Roza Canal.dwg	

Roza Canal
Wasteway #2
Bridge
Plan and Profile

Figure 5

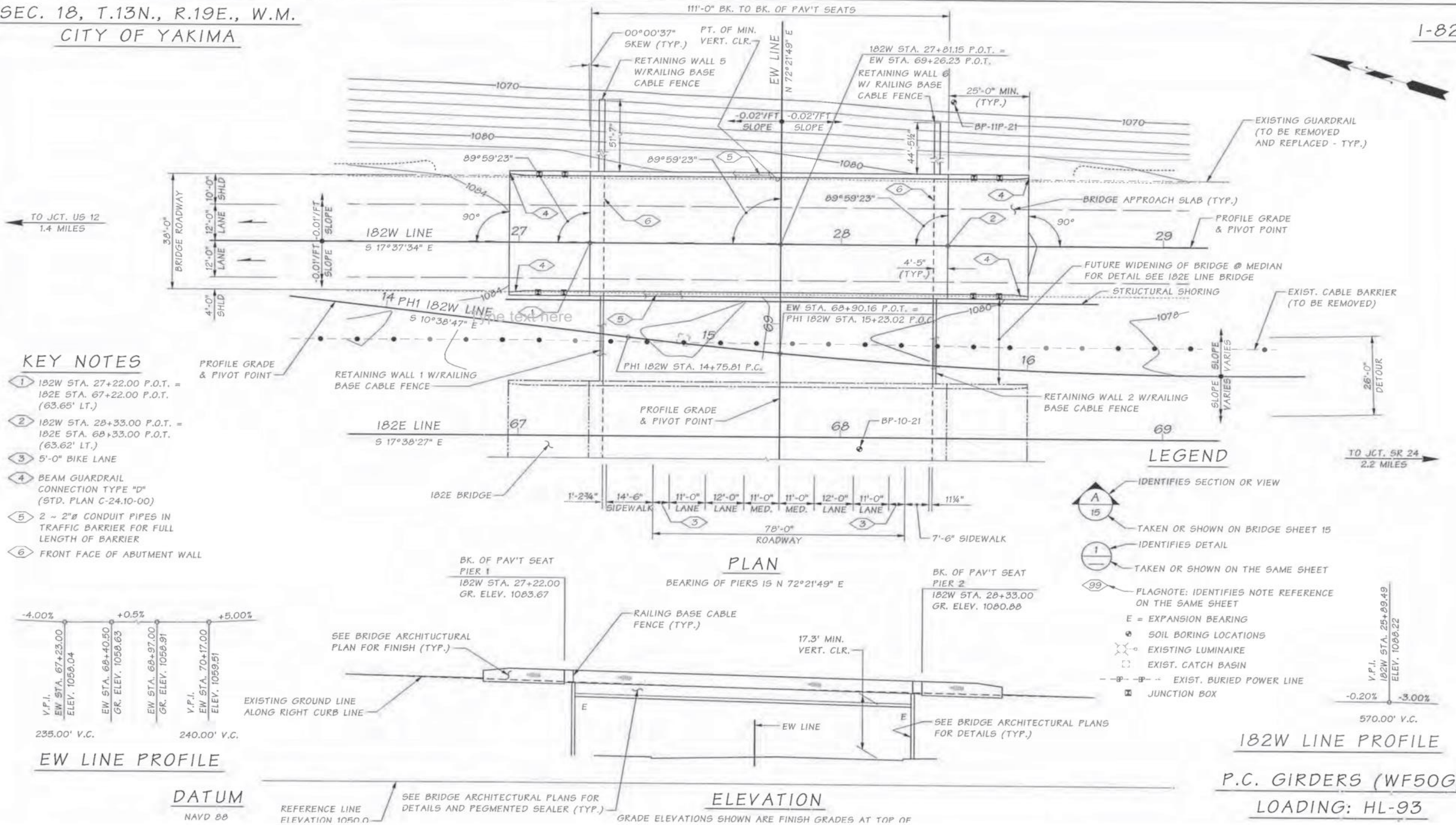


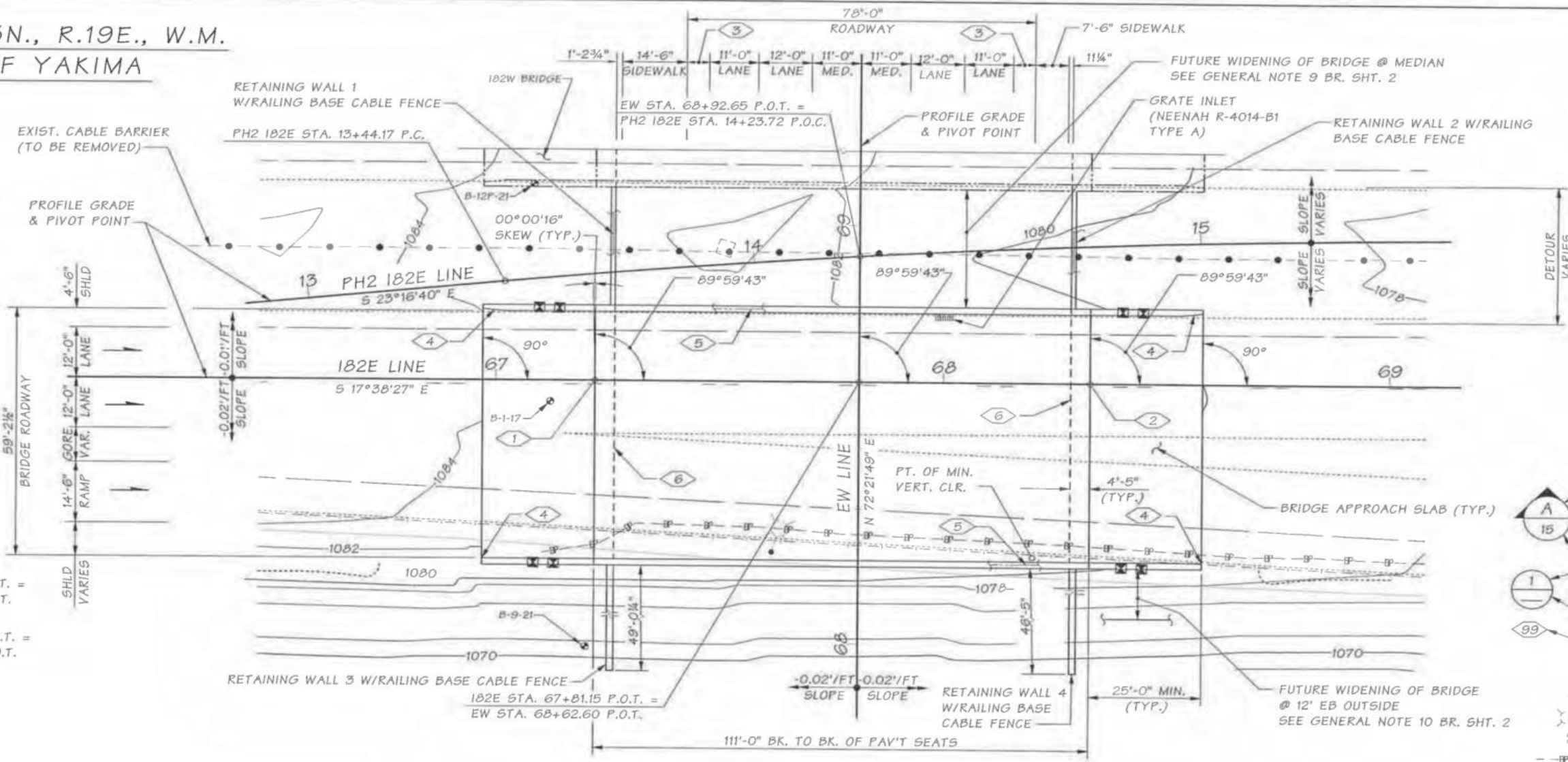
Figure 6.1
I-82 Westbound Bridge
Plan and Profile

SHEET 1

SEC. 18, T.13N., R.19E., W.M.
CITY OF YAKIMA

1-82

NOTE:
ALL EXISTING UTILITY LINES SHALL BE REMOVED UNLESS OTHERWISE NOTED.



TO JCT. SR 24
2.2 MILES

TO JCT. US 12
1.4 MILES

KEY NOTES

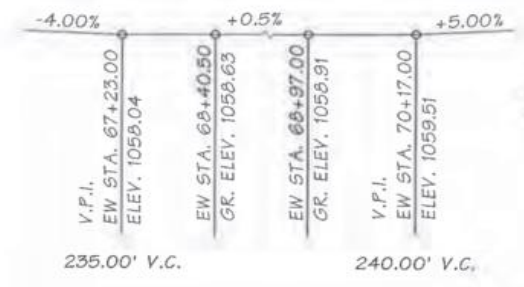
- ① 182E STA. 67+22.00 P.O.T. = 182W STA. 27+22.00 P.O.T. (63.65' RT.)
- ② 182E STA. 68+33.00 P.O.T. = 182W STA. 28+33.00 P.O.T. (63.62' RT.)
- ③ 5'-0" BIKE LANE
- ④ BEAM GUARDRAIL CONNECTION TYPE "D" (STD. PLAN C-24.10-00)
- ⑤ 2 - 2" CONDUIT PIPES IN TRAFFIC BARRIER FOR FULL LENGTH OF BARRIER
- ⑥ FRONT FACE OF ABUTMENT WALL

LEGEND

- ⊙ IDENTIFIES SECTION OR VIEW
- ⊙ A 15 TAKEN OR SHOWN ON BRIDGE SHEET 15
- ⊙ 1 IDENTIFIES DETAIL
- ⊙ 1 TAKEN OR SHOWN ON THE SAME SHEET
- ⊙ 99 FLAGNOTE: IDENTIFIES NOTE REFERENCE ON THE SAME SHEET
- E = EXPANSION BEARING
- ⊙ SOIL BORING LOCATIONS
- ⊙ EXISTING LUMINAIRE
- ⊙ EXIST. CATCH BASIN
- ⊙ EXIST. BURIED POWER LINE
- ⊙ JUNCTION BOX

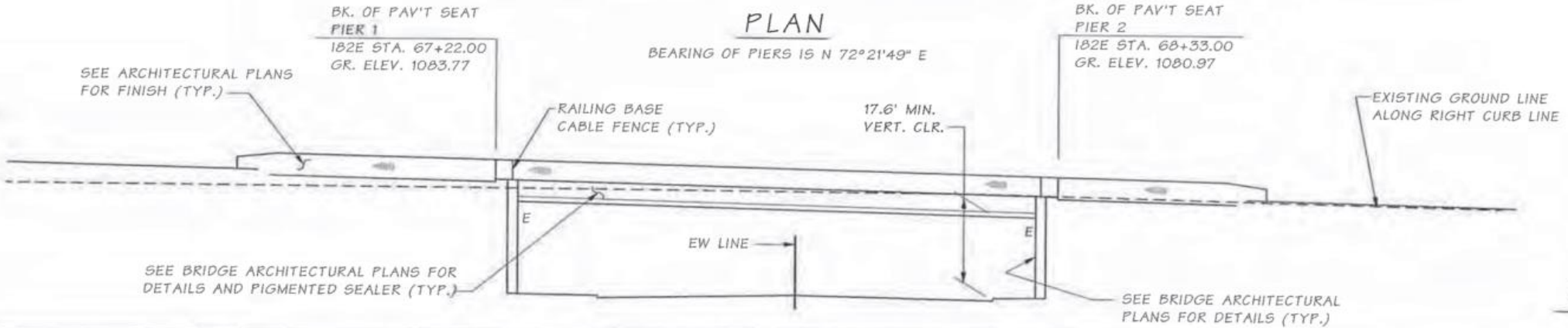
PLAN

BEARING OF PIERS IS N 72°21'49" E



EW LINE PROFILE

DATUM
NAVD 88



ELEVATION

GRADE ELEVATIONS SHOWN ARE FINISH GRADES AT TOP OF BRIDGE DECK ON 182E LINE AND ARE EQUAL TO PROFILE GRADE



182E LINE PROFILE

P.C. GIRDERS (WF50G)
LOADING: HL-93

SHEET 1

Figure 6.2
I-82 Eastbound Bridge
Plan and Profile

Figure 7. Floodplain Mitigation

East-West Corridor

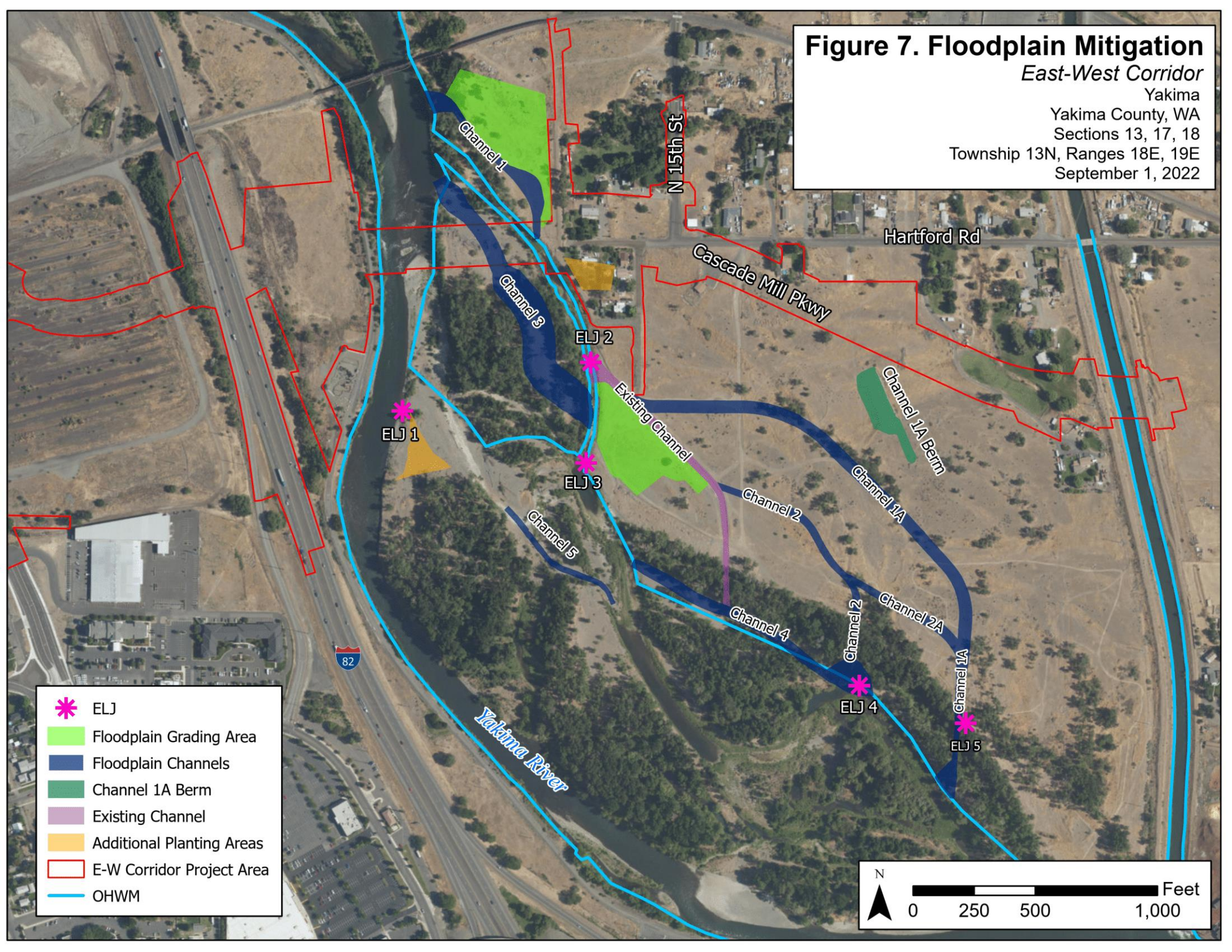
Yakima

Yakima County, WA

Sections 13, 17, 18

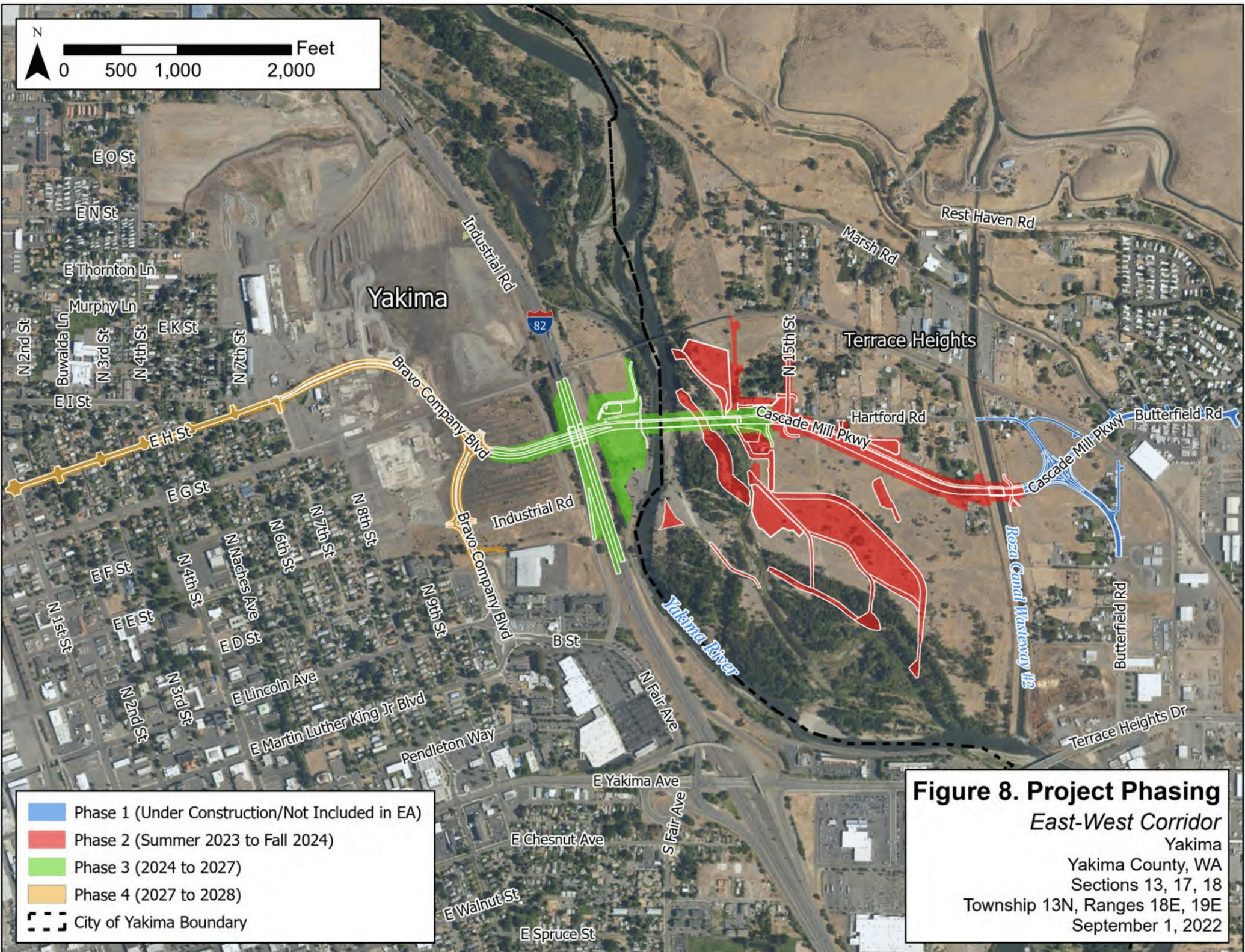
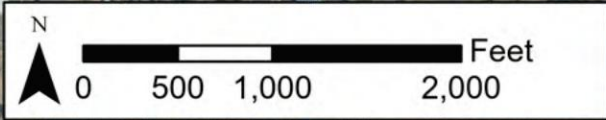
Township 13N, Ranges 18E, 19E

September 1, 2022



- * ELJ
- Floodplain Grading Area
- Floodplain Channels
- Channel 1A Berm
- Existing Channel
- Additional Planting Areas
- E-W Corridor Project Area
- OHWM





- Phase 1 (Under Construction/Not Included in EA)
- Phase 2 (Summer 2023 to Fall 2024)
- Phase 3 (2024 to 2027)
- Phase 4 (2027 to 2028)
- City of Yakima Boundary

Figure 8. Project Phasing
East-West Corridor
 Yakima
 Yakima County, WA
 Sections 13, 17, 18
 Township 13N, Ranges 18E, 19E
 September 1, 2022