



Office
1450 N. Wood Dale
Wood Dale, IL 60191

630.594.4795

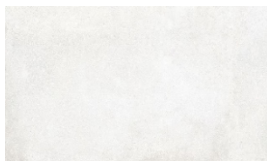
Series: City Scapes Technical Data

1. PRODUCT NAME

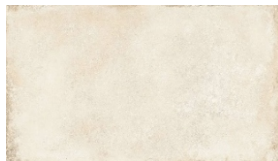
Brooklyn Collection



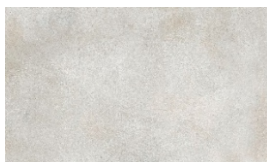
Cemento White



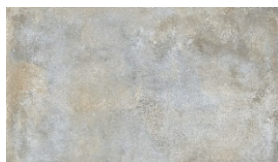
Cemento Sand



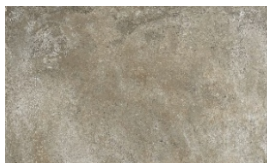
Cemento Argent



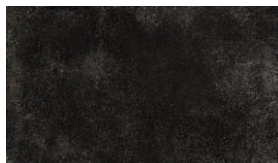
Cemento Greige



Cemento Toupe



Cemento Black



2. PRODUCT DESCRIPTION



(Green Choice includes pre-consumer recycled materials and post-consumer recycled materials.)

PRODUCT CERTIFICATIONS



Size/Thickness:

24" x 48" x 5/16" nominal
24" x 24" x 5/16" nominal
12" x 24" x 5/16" nominal
2"x2" mosaics on 12"x12" sheet nominal
6"x12" cove base trim nominal
4"x24" bullnose trim nominal

Finishes:

Honed

Recommended Grout Joint: 3/32" or greater

All sizes modular with 3/16" grout joint (≈5 mm)

Grout joints of 1/8" inch or less, especially with larger format tiles or running bond patterns, may require floor flatness values in excess of the 1/4" in 10' (or 1/16" in 1.0') standard required by ANSI.

See ANSI A108.01 2.6.2.2

For patterns with running bond/brick joints patterns Iris US recommends a maximum of 33% offset.

See ANSI A108.02 section 4.3.8

Series: City Scapes Technical Data

3. TECHNICAL DATA

Physical – Visual Properties	ASTM TEST	Industry Standard	Iris US Results
Water absorption	C373	Impervious <0.5%	≤0.1%
Thickness Dimension	C499	Range ± 0.04 Inc. Max.	≤±0.04 Inc.
Facial Dimension	C499	± 0.25 %	≤ ± 0.25%
Warpage average diagonal	C485	±0.40 %	≤ ± 0.40%
Warpage average edge	C485	±0.40 %	≤ ± 0.40%
Wedging	C502	± 0.25 %	≤ ± 0.25%
Bond Strength	C482	≥ 50 psi	≥200psi
Breaking Strength	C648	≥250 lbf	≥400lbf
Hardness (Mohs)	Scratch Test (No regulated)	Range 0 - 10	≥ 7
Visible Abrasion Resistance for Glaze tiles	C1027	No Requirement, Range 0 - 5	Class 4
Frost Resistance	C1026	No sample must show alterations to surface	No evidence of Damage
Chemical Resistance	C650	No Requirement, Range E - A	Class A
Stain Resistance	C1378	No Requirement, Range E - A	Cleanable
DCOF - Honed	BOT 3000	≥0.42*	≥0.50
DCOF - Textured	BOT 3000	≥0.42*	≥0.65
Aesthetic Classification	Visual Evaluation Shade & texture	No Requirement, Range V0 -V4	V2

* All values given are for matte or honed material. No values are given for polished material. Iris U.S. does not recommend polished surfaces in area subject to exposure from grease, oil or water.

For level interior spaces to be walked upon when wet (see ANSI A137.1 section 6.2.2.1.10 – Section 9.6 for test procedure).

The above information is a subject to change.



1450 N. Wood Dale
Wood Dale, IL 60191

630.594.4795

4. INSTALLATION

All installation work using Iris US tiles will conform to the standards set forth in the latest version of ANSI A108/118 and/or the TCNA Handbook for Ceramic Tile installations.

Installation or setting materials:

Movement joints shall be provided throughout the tile and work will conform to ANSI Specification A108.01-3.7; A108.02 – 4.4. and TCNA Details EJ171.

Setting materials used will conform to the ANSI 118.4 standard or greater and be recommended by the selected manufacturer for the installation & setting materials for ceramic or porcelain tile based on the application requirements.

5. WARRANTY

Iris US guarantees that its products will be free of manufacturing defects and they will meet or exceed the performance specifications set forth in ANSI 137.1.

6. MAINTENANCE

Care and Maintenance Recommendations Guide

Please contact your representative

7. TECHNICAL SERVICES

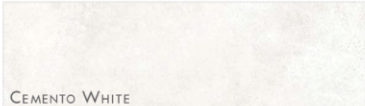

Technical Assistance

Guide Specifications, literature, MSDS, tile samples, details and installation procedures are all available for your use or libraries.

Please contact your representative for catalogues, physical samples, or architectural binders.

Series: City Scapes Packaging

COLORS & SIZES

		Stocked	Special Order	Special Order
		12" x 24"	24" x 24"	24" x 48"
	HN	IRG1224187	IRG2424187	IRG2448187
CEMENTO WHITE				
	HN	IRG1224185	IRG2424185	IRG2448185
CEMENTO SAND				
	HN	IRG1224182	IRG2424182	IRG2448182
CEMENTO ARGENT				
	HN	IRG1224184	IRG2424184	IRG2448184
CEMENTO GREIGE				
	HN	IRG1224186	IRG2424186	IRG2448186
CEMENTO TOUPE				
	HN	IRG1224183	IRG2424183	IRG2448183
CEMENTO BLACK				

BULLNOSE TRIM

4" X 24" Honed



COVEBASE TRIM

6" X 12" Honed



HN HONED

R11 TEXTURED

8 mm

Stocked

CEMENTO WHITE	IRG424BT187
CEMENTO SAND	IRG424BT185
CEMENTO ARGENT	IRG424BT182
CEMENTO GREIGE	IRG424BT184
CEMENTO TOUPE	IRG424BT186
CEMENTO BLACK	IRG424BT183

Special Order

CEMENTO WHITE	IRG612C187
CEMENTO SAND	IRG612C185
CEMENTO ARGENT	IRG612C182
CEMENTO GREIGE	IRG612C184
CEMENTO TOUPE	IRG612C186
CEMENTO BLACK	IRG612C183

Stocked

					
CEMENTO WHITE HONED MOSAIC 2" X 2"	CEMENTO SAND HONED MOSAIC 2" X 2"	CEMENTO ARGENT HONED MOSAIC 2" X 2"	CEMENTO GREIGE HONED MOSAIC 2" X 2"	CEMENTO TOUPE HONED MOSAIC 2" X 2"	CEMENTO BLACK HONED MOSAIC 2" X 2"
IRG12MO187	IRG12MO185	IRG12MO182	IRG12MO184	IRG12MO186	IRG12MO183

PACKAGING	Stocked 12" x 24"	24" x 24"	24" x 48"	Stocked MOSAICS 2"x2" on 12"x12" sheet	BULLNOSE 4"x24"	COVEBASE 6"x12"
Box/Pieces	8	4	4	5	16	8
Box/Sq. Ft	15.50	15.50	31.00	4.84	10.33	3.88
Pallet Box	32	32	20	—	—	—
Pallet/Sq. Ft	496.00	496.00	620.00	—	—	—
Thickness (mm)	8	8	8	8	8	7.5
Weight Lb/Sq.Ft.	3.55	3.55	3.83	3.55	2.00	1.70

 **Legacy Tile**
Flooring Distributors

1450 N. Wood Dale
Wood Dale, IL 60191

630.594.4795

When preparing the order, the surfaces are selected randomly, therefore, the continuity of patterns is not guaranteed.
Color samples are for general reference only. Tile is made with all natural materials, therefore, is subject to variation in color and/or texture.

Series: City Scares



The City Scares collection has been inspired by industrial & artistic ambience where different cultures & architectural styles have generated interest in this design. The soft cement look but rough & textured feel makes this perfect for any modern and contemporary interior. The strength & durability of this porcelain can be found behind the softness of six neutral colors. The smooth honed surface creates a sleek & clean appearance.