

## **Series: Calm Repose**

### **RECTIFIED COLOR BODY PORCELAIN TILE**

#### **Stocked Colors**



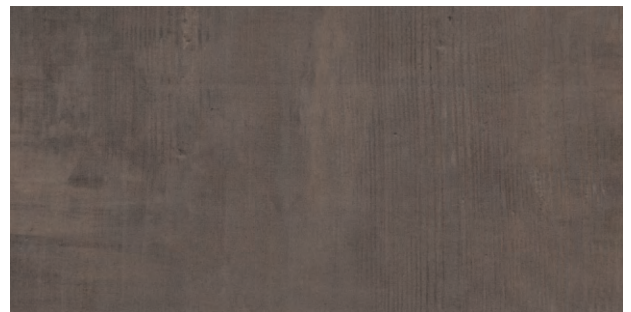
PURE CHAMOMILLE - CR70RCT1224RMT



EARL GREY - CR73RCT1224RMT



SPICED CHAI - CR71RCT1224RMT



MOUNTAIN ROSE - CR72RCT1224RMT

#### **Sizes**

**Stocked**

12" x 24"

**Special  
Order**

24" x 24"



**Stocked**

**3" x 24" Coordinating Bullnose P43F9**

CR70P43F9MT Pure Camomille  
CR71P43F9MT Spiced Chai  
CR72P43F9MT Earl Grey  
CR73P43F9MT Mountain Rose





**Office**  
1450 N. Wood Dale Rd.  
Wood Dale, IL 60191

**630.594.4795**


## Series: Calm Repose Technical Specs

### RECTIFIED COLOR BODY PORCELAIN TILE

#### SIZES

			Thickness	Sq. Ft./ Carton	Pieces/ Carton
	<b>Stock</b> 12 x 24 Floor Tile	11-5/8" x 23-3/8" (29.56 cm x 59.44 cm)	5/16"	17.02	9
	<b>Special Order</b> 24 x 24 Floor Tile	23-3/8" x 23-3/8" (59.44 cm x 59.44 cm)	5/16"	15.21	4

#### TRIM

			Number	Pieces/ Carton
	<b>Stock</b> Floor Bullnose	3 x 24	P43F9	10

#### APPLICATIONS


	Target DCOF wet	Suitable
Dry & Level – Interior Floor	N/A	●
Wet & Level – Interior Floor	≥ 0.42	●
Shower Floors (Residential or Light Commercial) Exterior Floor Applications (including patios, pool decking & other wet areas with minimal footwear)	≥ 0.60	
Ramps & Inclines/Walls/Backsplashes	≥ 0.65	
	N/A	●
Countertops	N/A	●
Pool Linings	N/A	

A DCOF value of ≥0.42 is the standard for tiles specified for level interior spaces expected to be walked upon when wet, as stated in ANSI A137.1-A326.3.

#### APPLICATION NOTES:

Suitable for exterior applications (provided it is noted as suitable in the applications chart above) in freezing and non-freezing climates, when proper installation methods are followed.

#### INSTALLATION

Grout Joint Recommendation	Shade Variation
3/16" (Overlap should not exceed 33% when installing tile with a length 15" or greater in a staggered brick-joint pattern.)	 HIGH (V3)

#### PERFORMANCE CHARACTERISTICS

	ASTM#	FLOOR RESULT
Water Absorption	C373	< 0.5%
Breaking Strength	C648	>275 lbs
Scratch Hardness	MOHS	8.0
Chemical Resistance	C650	Resistant

#### DURABILITY

Floor Surface Wear Resistance			
1	Residential Bathrooms	3	All Residential / Light Commercial
2	All Residential Areas	4	All Residential / Commercial

#### NOTES

Since there are variations in all fired ceramic and natural products, tile and trim supplied for your particular installation may not match samples. Final confirmation should be made from actual tiles and trim prior to installation. Manufactured in accordance with ANSI A137.1 standards. Not for use on ramps. Water, oil, grease, improper drainage and certain footwear can create slippery conditions. Floor applications expected to be exposed to these conditions require extra caution in product selection. Special consideration needs to be given when installing tiles greater than 15 inches.



All or select items within this series meet the requirements for these qualifications.