

May 8, 2025

Community Engagement 5:30p



**PRICE COUNTY
UNITED LIMITED**

NONPROFIT 501 (C) 3

**COMMUNITY & ECONOMIC DEVELOPMENT
SUSTAINABILITY**

**Reimagine
Redevelop
Reinvest**



Connect with us:

- Community Engagement Calendar
- Surveys
- Capital Campaigns
- Investments

pricecountyunited.org



5/8/25 Agenda

Projects for future development

1. Community Event/Rec/ Event Center
2. Kayaks / Storage - Fund raise - Community Boat Center - Nonprofit
3. ADA Kayak dock - Fund raise - Community Boat Center - Nonprofit
4. Trails - City property -west of City Campground



COMMUNITY &
ECONOMIC DEVELOPMENT
SUSTAINABILITY

**PRICE COUNTY
UNITED**

Potential Event Rec/Health/Event Center Concepts

WISH List:

1. Covered space for inclement weather - hosting
 - a. Music in the Park
 - b. Czech Fest
 - c. July 4 - Craft fair
 - d. Fall Harvest
 - e. Winter Fest
2. Indoor track for exercise in winter months
3. Indoor market
4. Indoor sports
5. Event center for large groups 300-500+
6. Event center with divisible space for small to large events
7. Engage areas community space
8. INPUT from audience.....



COMMUNITY &
ECONOMIC DEVELOPMENT
SUSTAINABILITY

**PRICE COUNTY
UNITED**

Examples of Event Centers

What our community wants and needs

Appearance - in character with lake property in Northern Wisconsin

1. Aspirus YMCA - Wausau - Example
2. Aspirus - The Landing - 55+
 - exercise, connection, “senior center”



COMMUNITY &
ECONOMIC DEVELOPMENT
SUSTAINABILITY

**PRICE COUNTY
UNITED**



Upper level indoor ¼ mile track
2 basketball court size gyms
2 pools
Gymnastic gym
Weight rooms
Landing - “senior engagement” specific

Yoga / Exercise room
Sauna Steam Room
Child Care

Physical Therapy
Locker Room



COMMUNITY &
ECONOMIC DEVELOPMENT
SUSTAINABILITY

**PRICE COUNTY
UNITED**

Wausau Branch Amenities

Heath & Wellness

- Cardio Equipment
- Strength Training Center
- Group Exercise Studios
- Cycling Studio
- Yoga Studio
- Program Gym
- Fieldhouse
- Racquetball Courts
- Walking Track
- Massage
- Pickleball
- The Landing 55+
- Wellness Center 55+
- Women's Fitness Room
- Men's Fitness Room
- Social Court

Youth

- Mini-Care
- Licensed Child Care Center
- 4K
- Before School Care
- After School Care
- Youth Lobby
- Toddler Play Area
- Summer Day Camp
- Gymnastics Center
- Swim Lessons
- Youth Basketball
- Youth Soccer
- Youth Flag Football
- Cooking Classes
- Nature Classes

Aquatics

- North Pool 80° - 82°
- South Pool 83° - 84°
- Lap Swim
- Water Walking
- Open Swim
- Shallow & Deep Water Exercise
- Adult Locker Rooms
- Family/Universal Locker Rooms
- Boys & Girls Locker Rooms
- Steam Rooms
- Saunas
- Whirlpool
- Towel Service



COMMUNITY &
ECONOMIC DEVELOPMENT
SUSTAINABILITY

**PRICE COUNTY
UNITED**



WOODSON YMCA

FOR YOUTH DEVELOPMENT®
FOR HEALTHY LIVING
FOR SOCIAL RESPONSIBILITY

[MEMBERSHIP](#) ▾ [PROGRAMS](#) ▾ [WAUSAU](#) ▾ [ASPIRUS](#) ▾ [THE LANDING](#) ▾



COMMUNITY &
ECONOMIC DEVELOPMENT
SUSTAINABILITY

**PRICE COUNTY
UNITED**





WOODSON YMCA

FOR YOUTH DEVELOPMENT®
FOR HEALTHY LIVING
FOR SOCIAL RESPONSIBILITY

[MEMBERSHIP ▾](#) [PROGRAMS ▾](#) [WAUSAU ▾](#) [ASPIRUS ▾](#) [THE LANDING ▾](#)



WAUSAU BRANCH

North Wellness Center 55+

The North Wellness Center is specifically designed for our 55+ Members and Members recovering from injury.

Welcome to our premier North Wellness Center, specifically designed to cater to the vibrant community of individuals aged 55 and over.

Our state-of-the-art equipment is specifically selected for its ease of use and effectiveness for mature bodies, ensuring a comfortable and empowering workout experience. At our Wellness Center, you'll find a supportive and welcoming environment that champions your health and happiness at every age, fostering a community where you can thrive in every aspect of wellness.

Matrix is one of the most trusted and recognized brands in the industry. You'll discover an exercise experience that sets a new standard for what a workout can be.

- Treadmills
- Upright Bikes
- Ellipticals
- Recumbent Bikes
- Hybrid Bikes
- Row Machines
- Weight Training Consoles



COMMUNITY &
ECONOMIC DEVELOPMENT
SUSTAINABILITY

**PRICE COUNTY
UNITED**



WOODSON YMCA

FOR YOUTH DEVELOPMENT®
FOR HEALTHY LIVING
FOR SOCIAL RESPONSIBILITY

MEMBERSHIP ▾ PROGRAMS ▾ WAUSAU ▾ ASPIRUS ▾ THE LANDING ▾ ABOUT ▾

The Landing

At The Landing, we re-imagine age as a time for connection, movement and growth. From personal relationships, to empowering programs, we're creating more than a senior center.

[Learn More](#)



COMMUNITY &
ECONOMIC DEVELOPMENT
SUSTAINABILITY

**PRICE COUNTY
UNITED**

Example of Kayak / Boat Rack

Organization manage:

Community Boat Center - Nonprofit

Price County United Limited - Parent organization

Address:

Accessibility

Security

Project component - engaging student entrepreneurship/community enrichment

1. Tours
2. Rental
3. Add on other watersport and engagement activities

Work group: Kayak and Boat Rack



COMMUNITY &
ECONOMIC DEVELOPMENT
SUSTAINABILITY

**PRICE COUNTY
UNITED**

Guided Experiences

Rentals

Community Sessions

Community Enrichment



[About](#)

[Rentals](#)

[Programs](#)

[Get Involved](#)

[Webcams](#)

[Donate](#)

Wheelhouse Building

Host your events, private parties, and classes on the waterfront!



COMMUNITY &
ECONOMIC DEVELOPMENT
SUSTAINABILITY

**PRICE COUNTY
UNITED**



The Wheelhouse building is open to the public to rent for public and private events!

Amenities Include:

- 6 Restrooms – 2 ADA accessible and 4 standard all equipped with showers
- Upstairs indoor space (49 max capacity)
- Kitchenette – sink, dishwasher, microwave and water heater
- Projector and bluetooth speaker
- Back porch overlooking the waterfront
- Covered “Below Deck” outdoor patio



COMMUNITY &
ECONOMIC DEVELOPMENT
SUSTAINABILITY

**PRICE COUNTY
UNITED**

STORY

The Community Boating Center is a 501(c)3 nonprofit fostering safe small-boat recreation on Bellingham Bay. The CBC was founded by a core of local small-watercraft enthusiasts in 2006 and began services to the public in 2007. The CBC is not a club. **There are no memberships and no dues. Programs and services are available to all.**

Much-appreciated tax-deductible donations, season-pass sales, dry-moorage fees, and rentals of sailboats and human-powered watercraft enable the CBC to provide the safety and skills education that is the core of the organization's mission. Volunteers are integrated into all aspects of the organization from maintaining boats, assisting with rentals, teaching educational classes, tabling at events, and serving as board and committee members.

Hourly Rentals

Kayaks & Paddle Boards

+

Rowboats

+

Dinghy Sailboats*

+

Keelboats*








—



COMMUNITY &
ECONOMIC DEVELOPMENT
SUSTAINABILITY

**PRICE COUNTY
UNITED**

May Calendar Example

					
4	5	 <p>Thank you, Teachers & Nurses!!</p> <p>Community is so lucky to have you. Show our gratitude, please use the code THANKYOU on rentals from May 2nd-10th.</p>	7		 <p>Black Jack: An African American Mariner Cruising the Inside Passage with Clyde Ford</p> <p>7:00 PM – 8:00 PM</p> <p>Black Jack: An African American Mariner Cruising the Inside Passage with Clyde Ford</p>
	12	13	14	15	
18	19	20	21	22	
25		26	27	28	29
					

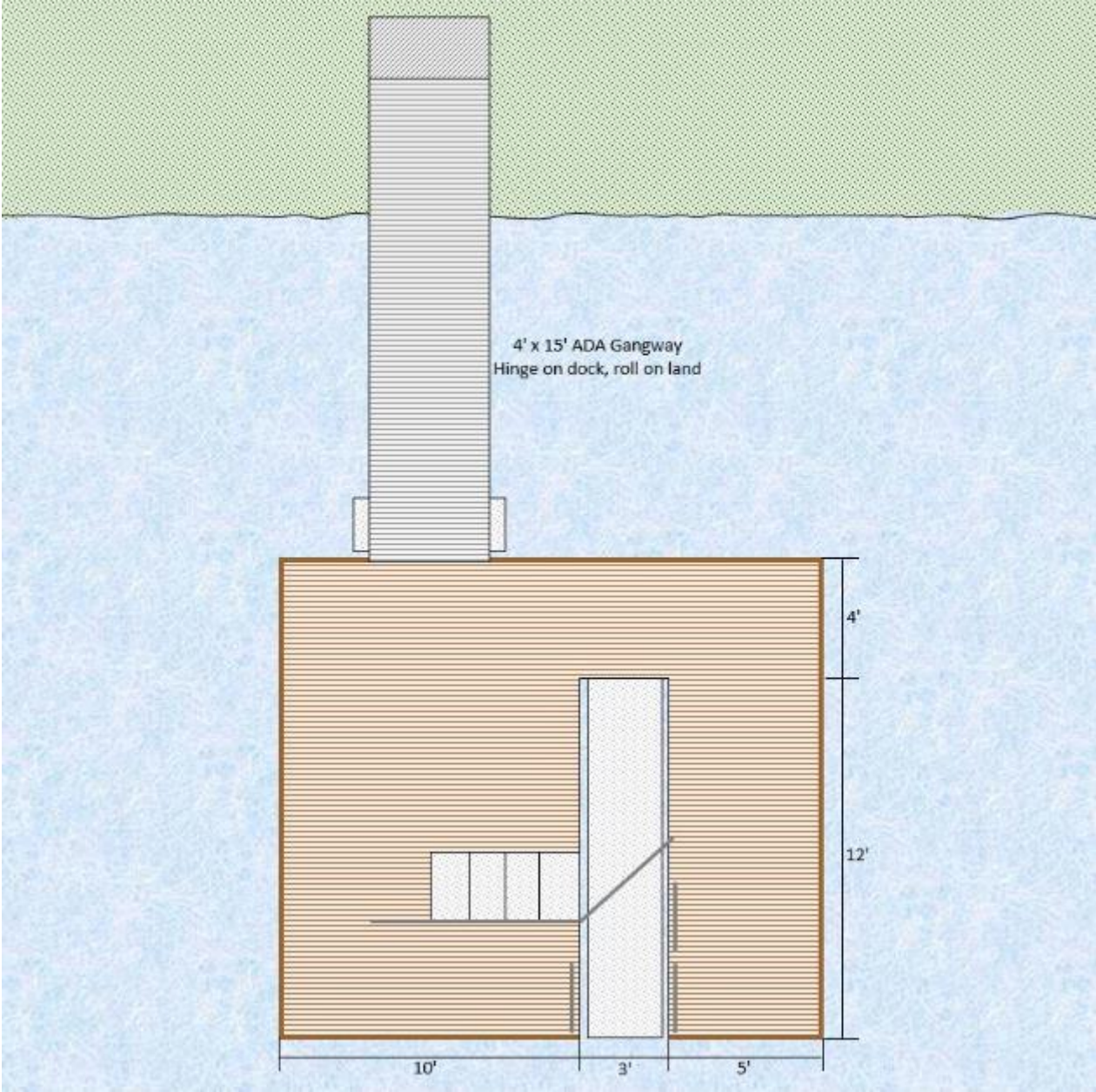
ADA Compliant Kayak Launch

Workgroup: Kayak Launch

Examples:



ADA Kayak Launch / Dock - Example



Community Trail

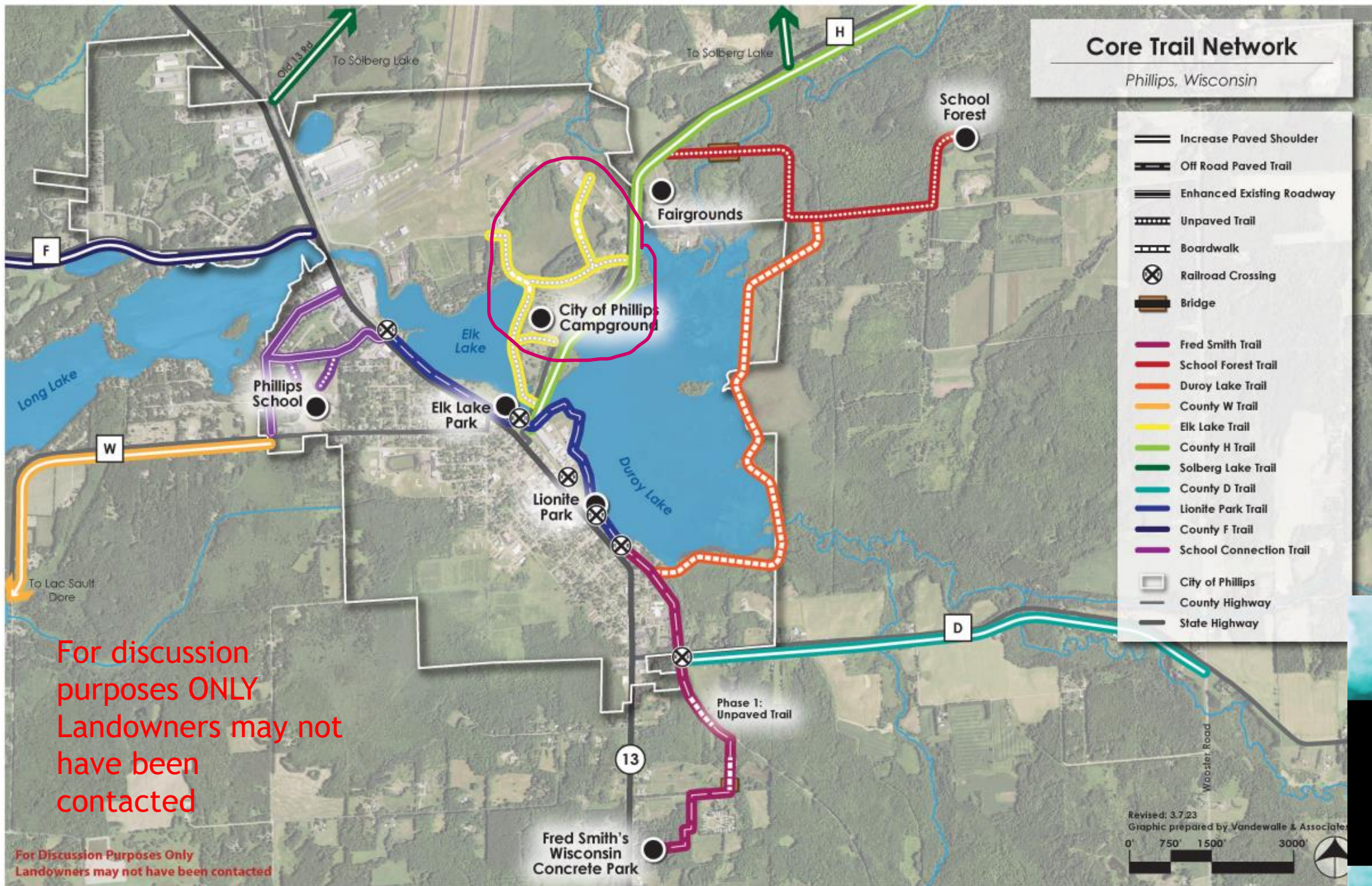
City Property - NW of City of Phillips Campground

1. Area
2. Work group lead
3. Work group volunteers
4. Project management - scope, tasks, timeline
5. Audience Comments...



COMMUNITY &
ECONOMIC DEVELOPMENT
SUSTAINABILITY

**PRICE COUNTY
UNITED**



For discussion purposes ONLY
Landowners may not have been contacted

For Discussion Purposes Only
Landowners may not have been contacted

Thank you for joining us!

We look forward to your
perspectives and positive
input!!!



COMMUNITY &
ECONOMIC DEVELOPMENT
SUSTAINABILITY

**PRICE COUNTY
UNITED**



**PRICE COUNTY
UNITED LIMITED**

NONPROFIT 501 (C) 3

**COMMUNITY & ECONOMIC DEVELOPMENT
SUSTAINABILITY**

**Reimagine
Redevelop
Reinvest**



Connect with us:

- Community Engagement Calendar
- Surveys
- Capital Campaigns
- Investments

pricecountyunited.org

