

USER MANUAL

VOLTECH CUSTOM MADE WATERMAKER

MODEL 300 LPH

LADY U



VOLKAN TECHNIC

SARIANA MAH. 20.SOKAK. NO:32/D MARMARİS – MUĞLA

TEL : +90 252 412 15 12 --- GSM : +90 535 364 45 67 ---

MAIL : volkan-teknik@hotmail.com



IMPORTANT :

WHEN THE WATERMAKER IS IN FUCTION DON'T OPEN THE ELECTRICAL BOX AND DON'T PUT THE HAND INSIDE THE WATERMAKER !
BEFORE OF ANY OPERATION STOP THE WATERMAKER BY STOP BUTTON !

1. The desalination plant must not run in port or close to densely populated coastlines in order to avoid premature and occasionally irreparable damage to the membrane.
2. The desalination plant should run offshore or while sailing, in order to avoid a frequent change of pre-processing filters, since the sea water – even if it is clear water- contains a big concentration of colloidal and suspended particles especially next to coastlines.
3. While manoeuvring - wherever the anchor weighing implies a displacement of the sand on the sea bed - , **the plant must be off.**
4. If the plant is kept off for over 5 days, it is indispensable to flush it with fresh water for 5 minutes.
5. Periodically check the oil level in the pan of the high pressure pump. Change the oil after every season. Use oil SAE 15/40.
6. If the plant is off for over 60 days, effect a bacteriologically protective wash of the membrane with speacial membrane solution.
7. After each production run a fresh-water flush.

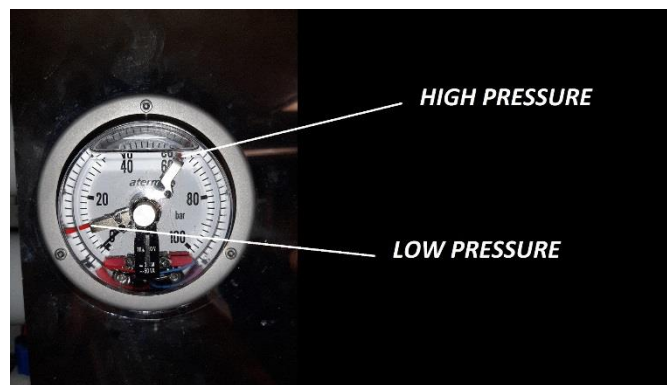
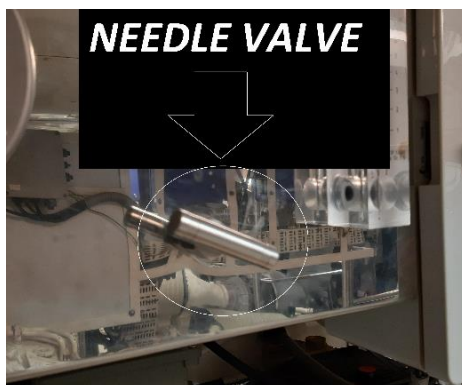
START PRODUCTION

- 1 – Position the seawater intake valve
- 2 – Press the green start button
- 3 – Check that the pressure meter shows about 2.5 BAR.



- 4 - Turn the pressure control valve clockwise in 20 seconds after the high pressure pump starts. If it is not turned, low pressure lamp will light up and the plant will stop.

- 5 - The 2 red needles are the alarms for low and high pressure.



- 6 – The unit is now running; check production on the flow meter and salinity on the salinometer (blue led = correct salinity / red led = salinity)

PRODUCTION RUN

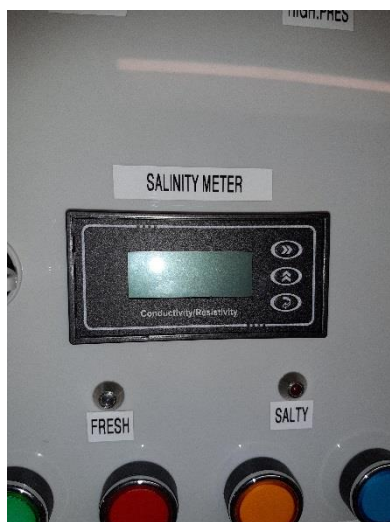
- Switch on the plant, the start lamp will light up.
- Open the sea water intake valve.
- Start the plant pushing the start button, wait for some seconds until the pressure is stable (anyway above 20 BAR in order to avoid any low-pressure alarm.)
- Set pressure to 60 BAR, closing very softly the needle valve clockwise. (In 30 seconds.)
- After that process the plant is running as long as it is required.
- If the plant stops, the lamp of the high and low pressure will light.
- To re-start, push the reset button and fully open the needle valve. Generally this alarm is on when some pressure defaults occur (10 Bar for too low or too high above 62 Bar.)
- It may happen that the early water production features salinity above 800 PPM, therefore it is automatically discharged by the solenoid valve. It only happens for some minutes.
- The solenoid valve automatically discharges the water production when red leds onto the electrical box light up.
- When the blue leds light up the water production is automatically pushed to the tanks.
- Before stopping the production run, drop the pressure to approx. 20 BAR. After that push the stop (red) button.
- It is important that each production run is followed by a wash.
- It is better to use the water made by watermaker for flushing, than the water that tanked from the pontoon because watermaker's water does not contain chlorine.

ALARMS

- If the low pressure alarm lights up, restart the unit pressing the yellow reset button and increase the pressure until it exceeds the red low pressure needle on the meter.



- If high pressure up - the alarm lights up, check the pressure control valve as it may be too tight, then turn it anti-clockwise till the pressure drops to 60 BAR.
- If during startup the red led of the salinometer lights up and the output water is jettisoned overboard, this is perfectly normal. After about 30 seconds, the blue led lights up and the water goes to the tanks.

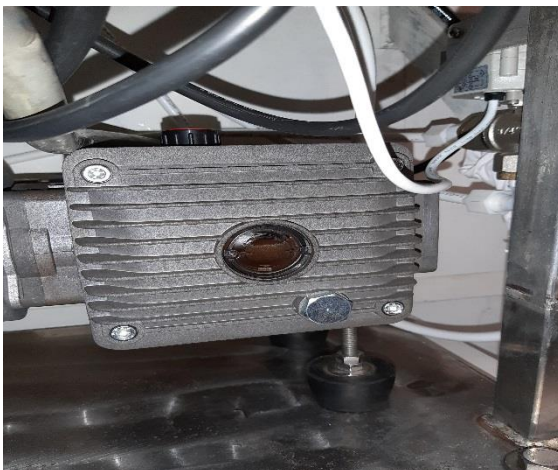


ROUTINE MAINTENANCE

- If the unit is not in use it must be rinsed every week with fresh sea water as the water from the last use tends to stagnate inside the filters, causing a buildup of bacteria. By washing through with clean sea water the filters are kept clean and efficient.
- Check the prefilter cartridges periodically. If they have a dark colouring, they need to be replaced.
- **After changing the filters, refill the water into the filters by pressing the blue button and after that check the pressure for 2.5 BAR.**



- Change the oil of high pressure pump at the end of every season.



SPECIAL MAINTENANCE

- At the end of the season special maintenance is required for the membranes for out of use period.
- Use membrane solution for special maintenance and protection of membranes in out of use period.

FLUSHING

- Use the flushing valve for flushing. When you turn it on, Watermaker will start to flush itself.
- You don't have to run the watermaker during the flushing process.



CONTACT US

**Don't hesitate to contact with us in case of any
problem or question.**

Mail : volkan-teknik@hotmail.com

Whatsapp : +90 535 365 45 67