

# NORTH STAR



## 2026 Battery Audition Packet

[nsindependent.org](http://nsindependent.org)

# INDEPENDENT



## 2026 Battery Auditions Guide

Welcome to the video audition process for North Star Independent! We're thrilled you have decided to showcase your talent and passion for the marching arts with us! This document outlines the steps to ensure your audition is as polished and impactful as possible. Whether you're a seasoned performer or relatively new to the audition scene, our goal is to provide you with clear guidelines to help you present your best self. Please read through the following sections carefully, and don't hesitate to reach out if you have any questions.

**Audition Date:** November 1st

**Video Audition Due Date:** November 1st by 8pm MST

**Call-Backs:** November 7th and 8th

### In-Person Audition Guidelines

- For the most impactful audition, the exercises stated on "video audition requirements" must be proficient.
- We will be marking time during the audition of ALL EXERCISES.

### Video Audition Guidelines

- Videos should be of the highest quality in audio and video.
- Videos should be live, no edits and showing full body. No special angles or production. Videos recorded on a Bass drum should show the right side of the instrument / drumhead.
- Mark time during performance of ALL EXERCISES.
- Feel free to make individual videos for individual exercises within the audition packet. However, individual exercises should be live and unedited within each exercise video.
- Audition material should consist of EVERYTHING specified in the instrument specific video audition requirements.
- If possible, audition material should be performed on an actual instrument (snare, tenor, bass drum, cymbals). Drum pads are acceptable if the instrument is not accessible.
- Bass Drum players should pick a particular part (1-5) for music with splits.
- Material should be performed at designated tempos. When a range of tempos are given, material should be performed at or near the top metronome marking provided. Furthermore, a combination of clarity and tempo should be considered in the tempo for the video auditions.
- Audition materials must be submitted through YouTube links, or Google Drive folders.
- Email ALL applicable links to: [admin@nsindependent.org](mailto:admin@nsindependent.org) **AND** [daniel@nsindependent.org](mailto:daniel@nsindependent.org)

# Video Audition Requirements

## Snares and Tenors

- 8-8-16 @ 3in, 6in, 9in, 12in, and Full (120-146 BPM)
- Bucks @ 12in (108-146 BPM)
- Stick Control @ 12in (108 BPM)
- Paradiddle Breakdown (140-160 BPM)
- Paradiddlediddle Breakdown - Duple (140-160 BPM)
- Ristretto (106-130 BPM)

## Basses

- 8th-Note Timing/Jedi 8's (140-168 BPM)
- Bucks (108-124 BPM)
- Moving Sixteenth-Note (100-124 BPM)
- Sixteenth Note Timing 2-Note (92-108 BPM)
- 9-7-5 (140-168 BPM)

## Cymbals

- Completion of Chapter 1-3 of the Seavine Cymbal Education Series.
- Video Demonstration of Set, Set to Gumption to Set, and Set to Vertical position to Set (With or Without Cymbals)

*For questions and clarifications, please contact [daniel@nsindependent.org](mailto:daniel@nsindependent.org).*

# 8-8-16

Snare

Tenors

Tenors2

Bass Line

R R R R R R R R L L L L L L L L R R R R R R R R R R R R R R

R R R R R R R R L L L L L L L L R R R R R R R R R R R R R R

R R R R R R R R L L L L L L L L R R R R R R R R R R R R R R

R R R R R R R R L L L L L L L L R R R R R R R R R R R R R R

5

SN.

TN.

TN2

BL.

L L L L L L L L R R R R R R R R L L L L L L L L L L L L L L R

L L L L L L L L R R R R R R R R L L L L L L L L L L L L L L R

L L L L L L L L R R R R R R R R L L L L L L L L L L L L L L R

L L L L L L L L R R R R R R R R L L L L L L L L L L L L L L R

# 9-7-5

Daniel Balls

9/8

♩ = 160



5



7/8

10



14



5/8

17



20



# Ristretto

Daniel Balls

**A** ♩ = 168

*p*

5

9

13

17 **B**

*mf*

21

25

29

33 **C**

*To Mid* *To Edge*

38 *Edge*

# Ristretto

Daniel Balls

**A** ♩ = 168

*p*

5

9

13

17 **B**

*mf*

21

*ff*

*r l R L R l r L r l R L R*

26

*R*

30 **C**

35

*To Mid* *To Edge* *Edge*

## Ristretto

Daniel Balls

**A** ♩ = 168

*p*

4

7

10

13

*mf*

16

**B**

*f*

20

25

30

33

**C**

36 *To Mid* *To Edge*

38 *Edge*

The score is written on a single staff with a key signature of one flat (Bb) and a 4/4 time signature. The tempo is marked as 168 beats per minute. The piece is divided into three sections: A, B, and C. Section A starts at measure 1 and ends at measure 15. Section B starts at measure 16 and ends at measure 35. Section C starts at measure 36 and ends at measure 38. The notation includes various rhythmic patterns, including eighth and sixteenth notes, and rests. Dynamic markings include p (piano), mf (mezzo-forte), and f (forte). Section B features triplets and accents. Section C includes markings for 'To Mid' and 'To Edge'.



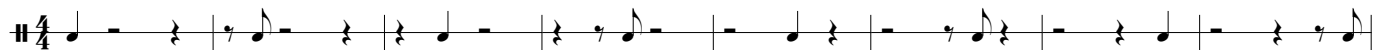
# Basic Skill Sets

Compiled by Daniel Balls

## Hands with your Feet



## Moving 8th Notes / Jedi 8's



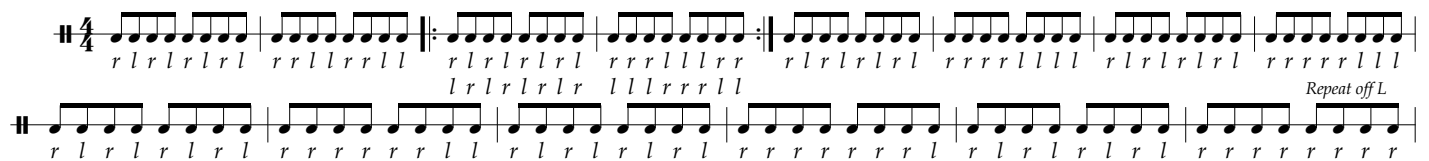
## 8th Note Timing



## 8 - 8 - 16



## Subdividing 8th Notes



## Moving 16th Notes



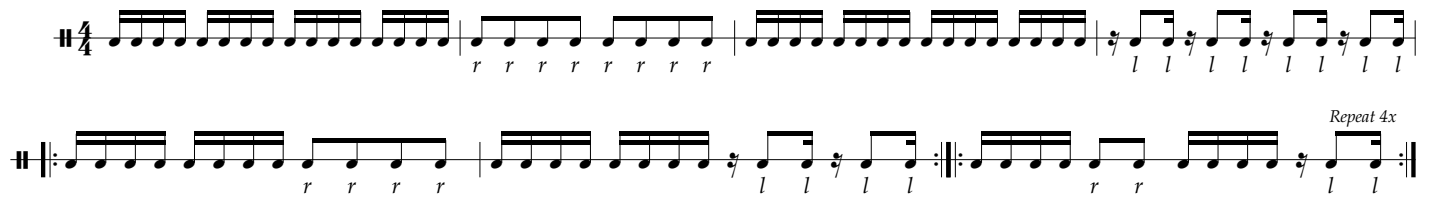
## Bucks



## Tap Pyramid



### 16th Note Timing - 1 Note



### 16th Note Timing - 2 Note



### 16th Note Timing - 3 Note



### Triplet Timing - 1 Note

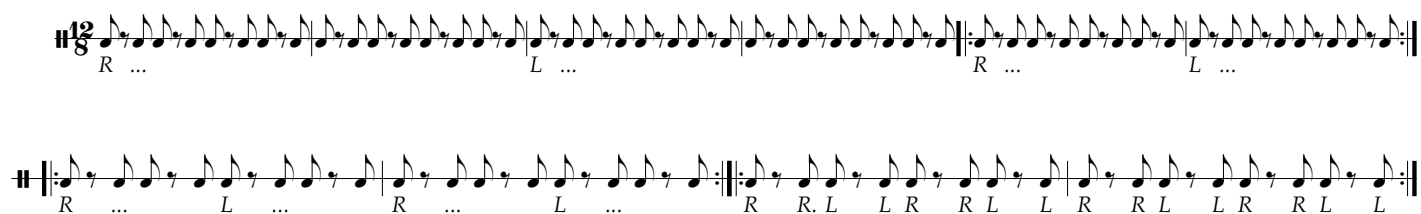


### Triplet Timing - 2 Note



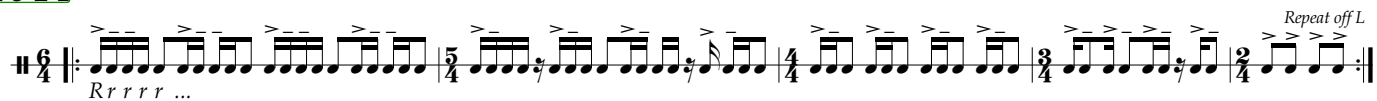
### Triplet Timing - 3 Note



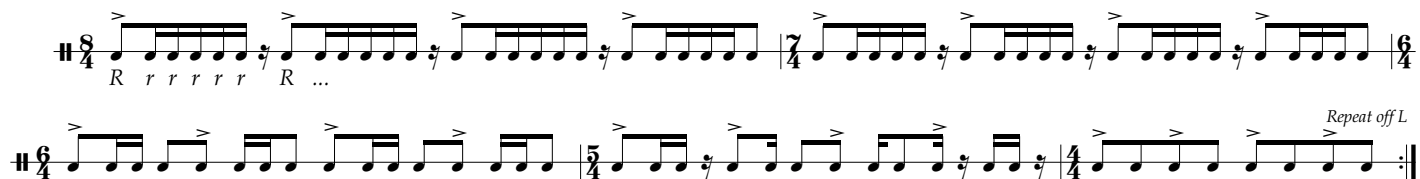
**Irish Spring****A/B****Double Stroke Rolls****Gallop****Hugadics****Huckadics****Huckdigadics**

4

## 5-4-3-2-1



## Accent 5-4-3-2-1



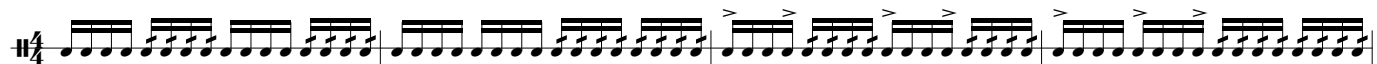
## Rotating Threes



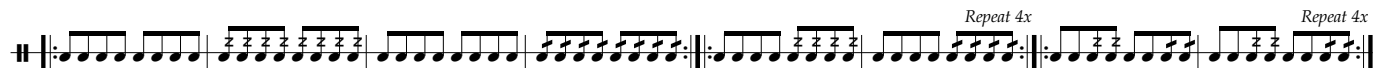
## Stick Control



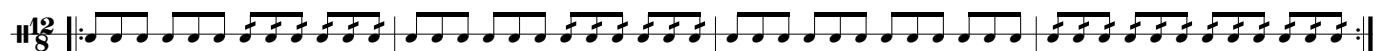
## Chicken and a Roll



## Greens and Yellows



## Short Short Long



## Triplet Diddle



**Pat's**

### Inverted Rolls Breakdown

## Paradiddle Breakdown

## Paradiddlediddle Breakdown - Duple

### Pardiddlediddle Breakdown - Triplet

## Puhduhduh Breakdown - Duple

### Puhduhduh Breakdown - Triplet

[illegible]

[illegible]

First line of musical notation, featuring a sequence of rhythmic patterns with notes and rests, and a key signature of one sharp (F#).

[illegible]

The first staff of music begins with a double bar line. It contains a sequence of eighth notes. The first two groups of two eighth notes are marked with a '5' and an accent (>). This is followed by a double bar line and a key signature change to one sharp (F#). The sequence continues with eighth notes, some marked with a '5' and an accent, and others with a slur and an accent. The staff ends with a double bar line.