



The perfect ring for CHLOÉ



The Brief

- Investment piece.
- Ideally yellow gold.
- Anything with a chunky band.
- Ideally a feature gemstone: blues and greens.
- Open to plain or diamond bands with a bit of character.
- Emerald cuts and pear cuts are my favourite.
- Rubover/Gypsy set.
- Ring size: L
- Budget: £1000 (flexible within reason)

Our Advice

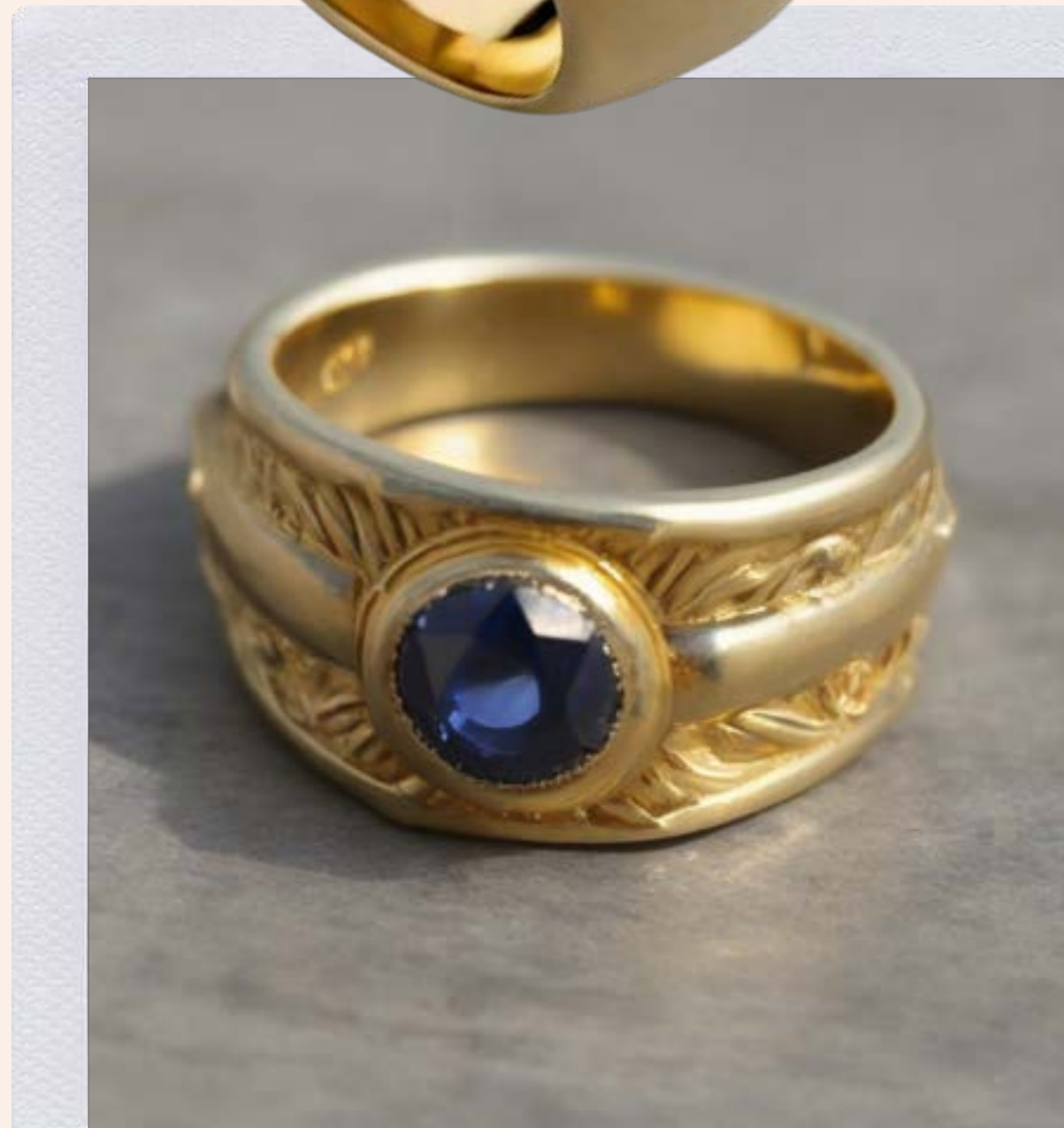
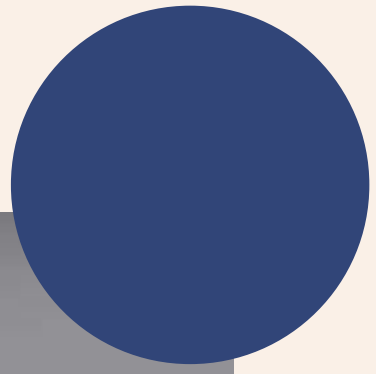
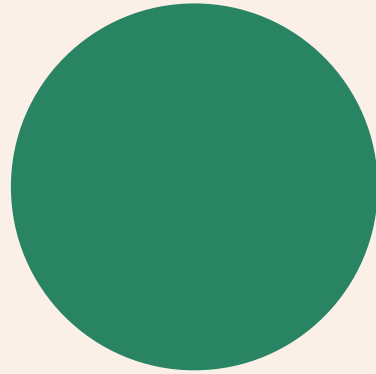
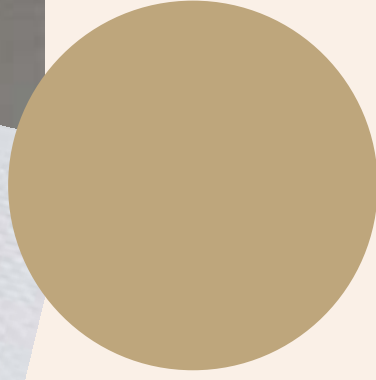
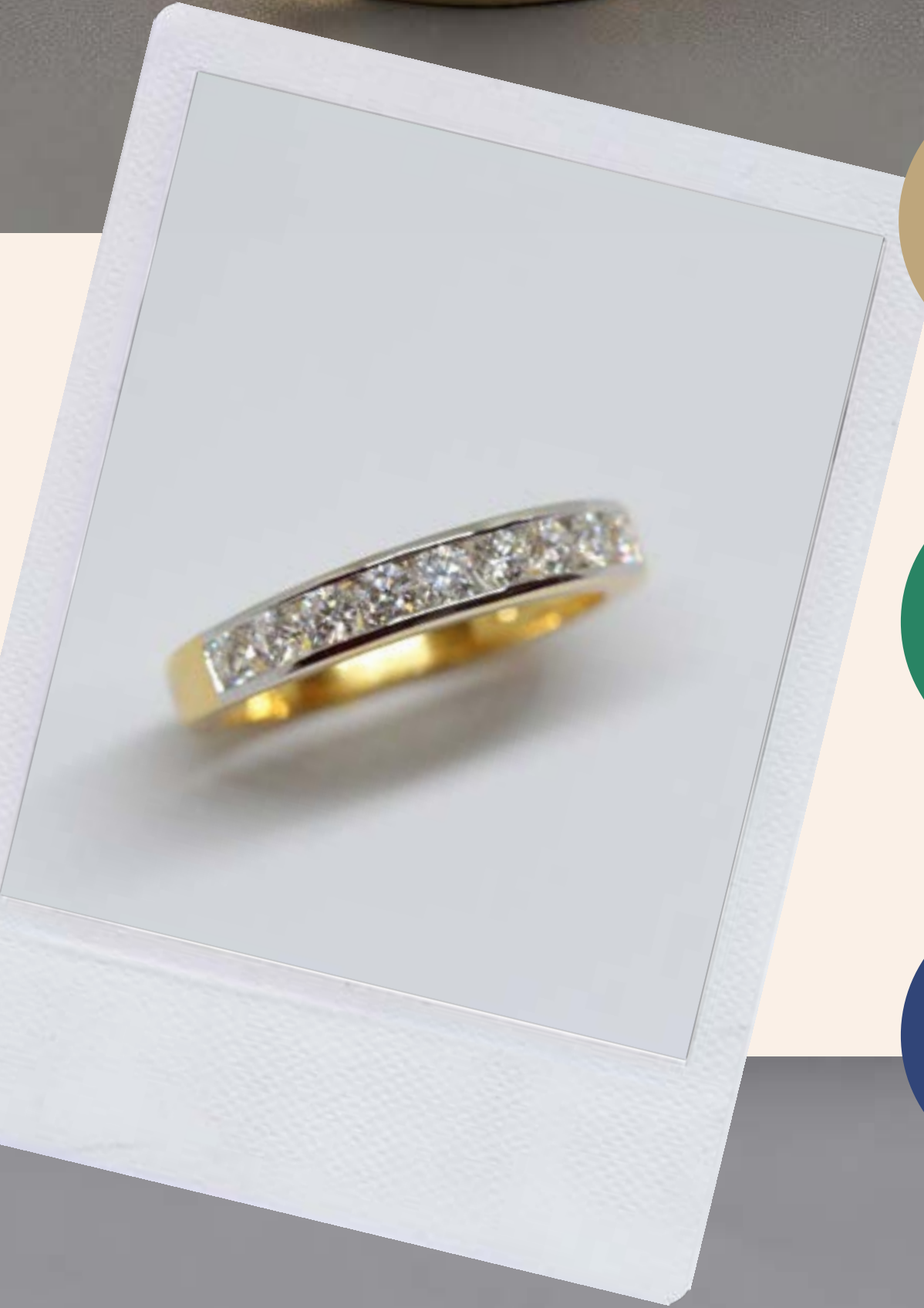
Above all, our aim is to find you a ring to fall in love with and that you would want to wear every day. For investment, we recommend higher purity metals like 18ct gold and platinum. 18ct gold contains 75% pure gold. 9ct gold contains only 37.5% pure gold which is not a great percentage for investment value. Although 9ct gold pieces generally cost less, their prices do not usually account for the vastness of the difference in gold value. Gold continues to be the only true reserve currency. The total weight of the ring is a factor that is often overlooked that will affect the feel of wearing the ring and the intrinsic value. It is highly worth considering, as heavier means higher precious metal content.

When selecting gemstones for investment, certain gemstones hold their value better over time. Hardness also needs to be a primary consideration. Diamonds will lift the colours of the gemstones and provide a nice accent of brilliance, but small diamonds will not greatly affect the value of the ring; larger diamonds will. Sapphires maintain their value extremely well as do Emeralds. Precious gemstone options do mean a slightly higher budget but the value of the rings and the slight difference in prices is, in our opinion, worth some thought. For an investment ring that can be worn everyday and will stand the test of time, the setting of the stones is important. We recommend rubover or channel set rings.

All items listed here are available at the time of sending. These items are not currently part of our collection but could be sourced for you. Prices given are approximate and a final price will be determined based on the price we are able to secure the item for. We will endeavour to secure the best deal possible for you and aim to keep the final price as close to the quoted price as we can. Keep in mind, this means the final price could be lower than the quoted price too. We have only selected items that we are confident we will be able to acquire. However, some items listed will be sold at auction so we cannot guarantee we will be able to secure them, although we will make every effort to do so. The price quoted includes polishing and refinishing of the ring if you would like this. Postage is also included.



Inspo PICS



Our specially curated **SELECTION**

1.



2.



3.



4.



5.



6.



7.



8.



9.



The perfect ring for CHLOÉ

1. 18ct Yellow Gold Pear Cut Emerald Ring. Total weight 7.9g.
Emerald weight approximately 1 carat.
Size O

2. 18ct Yellow Gold & Diamond 4-Stone Ring. Total weight 3.75g.
Diamond weight approx 0.40 carats.
Size P1/2

3. 18ct Yellow Gold Chunky Stylised Band. Total weight 8.8g
Size O

4. 18ct Yellow Gold Belcher Ring. Total weight 5.5g. Diamond
weight approx 0.50ct
Size R 1/2

5. 18ct Yellow Gold & Diamond Gypsy Starburst Ring.
Total weight 6.3g. Diamond weight approx 0.40 carats.
Size Q

6. 18ct Yellow Gold Sapphire and Pearcut Diamond Ring. Total
weight 3.4g. Sapphire weight approx 0.25ct. Diamond weight
approx 0.25ct each. Size O

7. 18ct Yellow Gold Emerald and Diamond Daisy Cluster Ring. Total
weight 3.4g. Emerald weight approx 0.20ct. Diamond Weight
0.50ct.
Size O

8. 18ct Yellow Gold & Diamond Half Hoop. Total weight 5.62g.
Diamond weight approx 1.2ct.
Size L1/2

9. 18ct Yellow Gold Sapphire and Old Cut Diamond Chunky Ring.
Total weight 8.4g. Sapphire weight approx 0.50ct. Diamond
weight approx 0.50ct total.
Size N