

85 GALLON 3 POINT HITCH OWNERS MANUAL KLC TIP

Since VAN'S EQUIPMENT'S beginnings we have used a generic owners manual. It was just too costly to have printed and keep on hand owner manuals specific to each size and type sprayer we manufacture.

We now have the technology in house to create sprayer specific manuals and to print them only as needed. We think we have made a good beginning, but these manuals are still in the development stage. At this point we would appreciate the input of our end user customer and our dealers as to how we can make these manuals more useful and user friendly.

This is the prototype manual. Please look over the manual and give us your input.

CALL VANS EQUIPMENT AT 1-800-765-1101 AND ASK FOR CRAIG

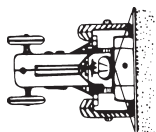
We appreciate your input on these manuals.

Thanks Vans Equipment

Tip bracket is shown in transport position.
Tip should point to rear.



(PRICES SUBJECT TO CHANGE WITHOUT NOTICE)



van's

EQUIPMENT COMPANY

We Appreciate You and Your Business!

P.O. BOX 3157 • 2169 SYLVESTER HIGHWAY • MOULTRIE, GEORGIA 31776-3157

(229) 985-1101

**VAN'S EQUIPMENT
BUILT FOR FARMING INTEGRITY**

WHEN SELECTING EQUIPMENT FOR FARMING THE NAME VAN'S means availability, reliability, and proven superiority. Maintaining a close association with farming customers has resulted in equipment design and manufacturing philosophy that reflects the exacting requirements of our customers.

Van's Equipment Company, Inc. appreciates your purchase of a new spray unit. This unit, is designed to give years of service with proper care. The following pages will be helpful in set-up and maintenance of your new unit.

PLEASE READ THIS MANUAL CAREFULLY BEFORE INITIAL START-UP IS ATTEMPTED.

**WE APPRECIATE YOU
AND YOUR BUSINESS**

INDEX

PAGE NO.....	DESCRIPTION
3.....	Model Description and Overview
4-7.....	Breakdown and Parts List
8.....	Pump Parts List,(Hypro 6500C standard)
9.....	Valve Parts List,(Spraying Systems AA6B standard)
10.....	Spray Gun Parts List,(Spraying Systems AA143-AL-3/4-6 standard)
11-12.....	Mounting and Assembly Instructions
12.....	Calibration
12-14.....	Maintanance and Precautions
14.....	Trouble Shooting
15.....	Tip Chart,(TP8003 standard)
16.....	KLC Breakdown

85 GALLON 3-POINT HITCH

The 85 Gallon 3-Point Hitch Sprayer from Van's has our exclusive mono frame design with one piece pipe frame. This heavy duty construction allows us to offer you the only 5 year frame warranty in the sprayer industry. This unit is available with several pump and boom options.

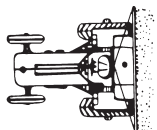
Tip bracket is shown in transport position.
Tip should point to rear.

Standard Features include:

- 1) 85 Gallon Polyethylene Tank
- 2) 5" Fillwell
- 3) Continuous Jet Agitation
- 4) Several Pump Options
- 5) Full Five Year Structural Warranty
- 6) Fully Assembled & Factory Tested



	HANDGUN & KLC	KLC ONLY
6 ROLLER	L85CS11K	L85KLC
8 ROLLER	L85CS12K	
D6 DIAPHRAGM	L85CS14K	



van's

EQUIPMENT COMPANY

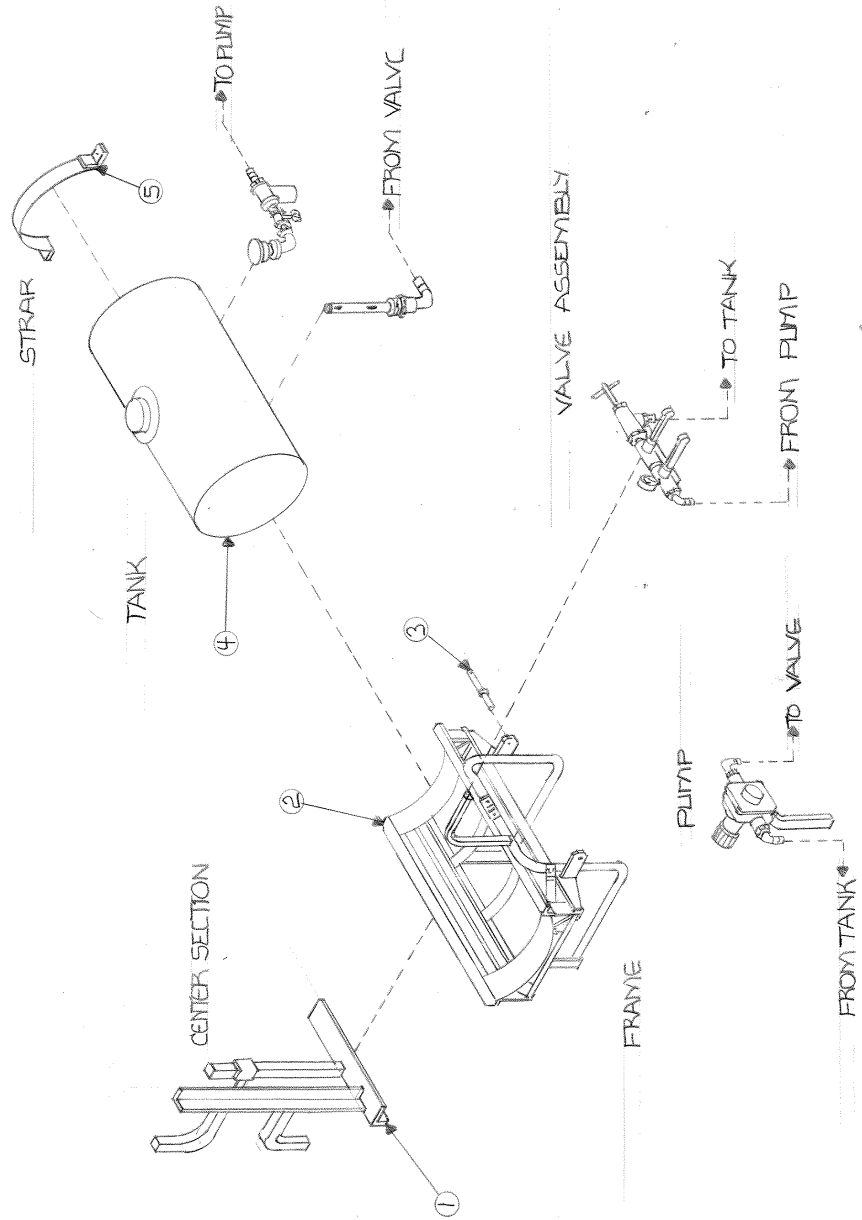
P.O. BOX 3157 • 2169 SYLVESTER HIGHWAY • MOULTRIE, GEORGIA 31776-3157

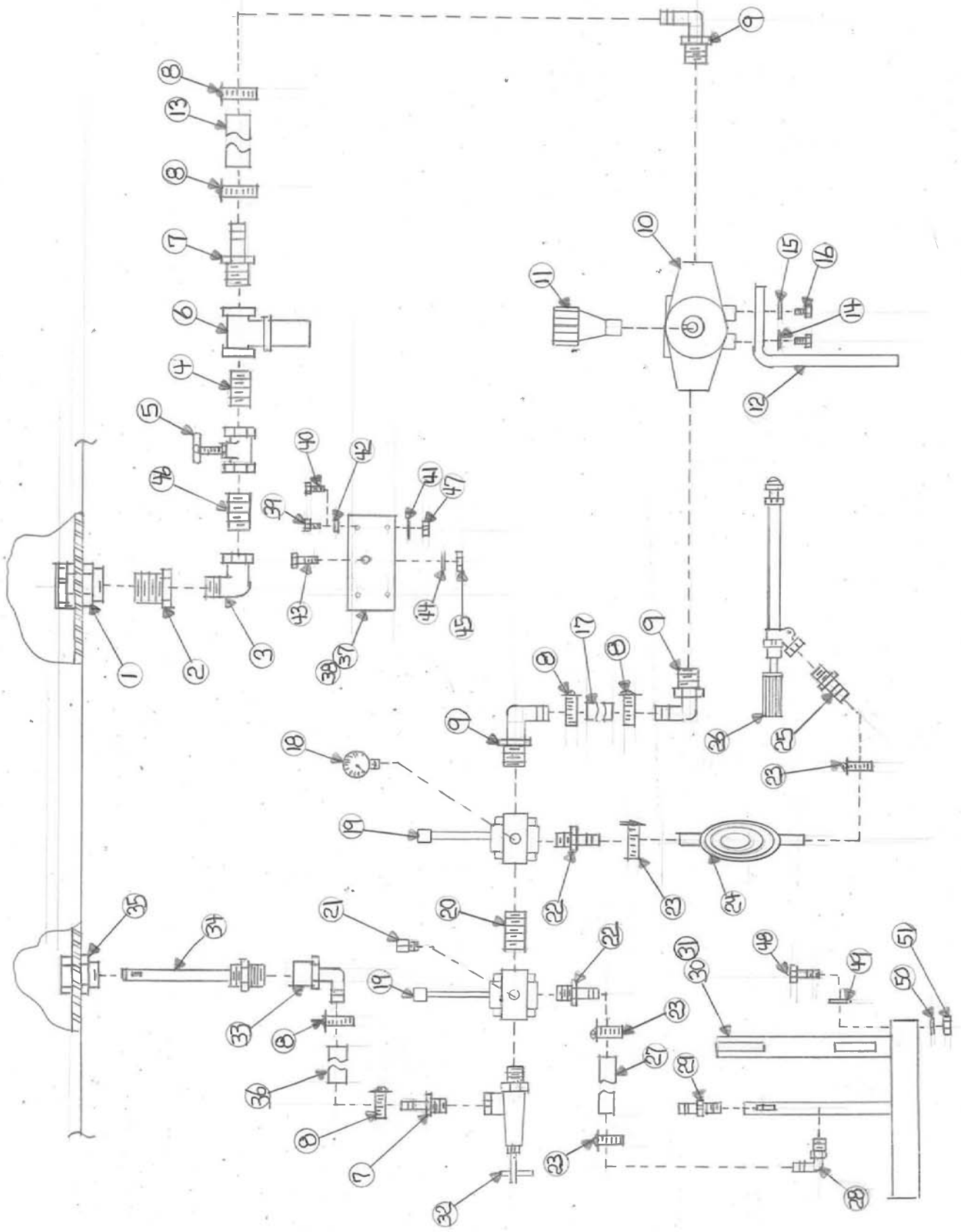
We Appreciate You and Your Business!

(229) 985-1101

(PRICES SUBJECT TO CHANGE WITHOUT NOTICE)

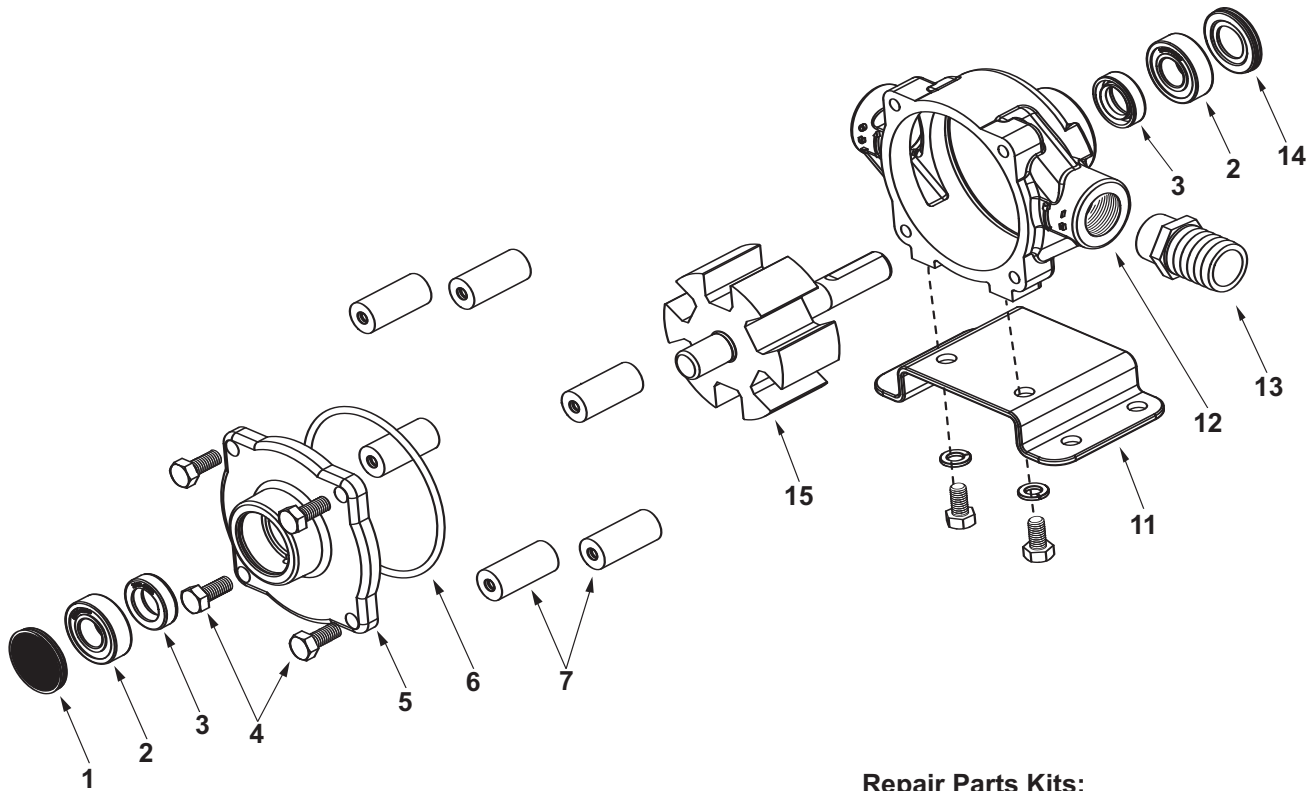
ITEM NO.	DESCRIPTION	PART NO.
1	Center Section (KLC only)	H10
2	Center Section (KLC & HG)	H8
3	Frame	L85
4	Tank	47394
5	Strap	SP42





ITEM NO.	DESCRIPTION	PART NO.
1	Tank fitting 1 1/4" anti-vortex poly	63065
2	Reducer bushing 1 1/4"mpt x 3/4"fpt nylon	RB11434
3	Street elbow 3/4" nylon	SE34
4	Nipple 3/4" x close galvanized	GN341.5
5	Gate valve 3/4" brass	34BGV
6	Strainer 3/4"mpt 50 mesh	RVF1212PE40P
7	Hose shank 3/4"mpt x 1/2" barb nylon	A3412
8	Hose clamp 1/2"	8H
9	Elbow 3/4"mpt x 1/2" barb 90 nylon	EL3412
10	Pump	6500C
11	Quick coupler 540 rpm 1 3/8"	1321-0006
12	Pump stabilizer	PS
13	Hose black ag. 1/2"	10031730
14	Lock washer 5/16"	LW516
15	Flat washer 5/16"	FW516
16	Bolt 5/16" x 3/4"	CS51634C
17	Hose black ag. 1/2"	10031730
18	Pressure gauge 0-160 psi dry	SG-160
19	Shutoff valve	AA6B
20	Nipple 3/4" x close nylon	M34
21	Plug 1/4" nylon	F14
22	Hose shank 1/2"mpt x 3/8" barb nylon	A1238
23	Hose clamp 3/8"	6H
24	Hose black ag. 3/8"	10031720
25	Hose shank 3/4"mpt x 3/8" barb nylon	A3438
26	Spray gun	AA143-AL-3/4-6
27	Hose black ag 3/8"	10031720
28	Elbow 1/4"mpt x 3/8" barb 90 nylon	EL1438
29	KLC tip	1/4KLC-18
30	Center Section 30,50,85 KLC tip only	H10
31	Center Section 30,50,85 KLC tip and hand gun	H8
32	Pressure regulator	13895-6
33	Elbow 3/4"fpt x 1/2" barb 90 nylon	EL3412F
34	Jet agitator	3371-0019
35	Tank fitting 3/4" poly	60401
36	Hose red ag 1/2"	3204-0410
37	Valve stand (1 6B)	VS6B
38	Valve stand (2 6B)	VS6B2
39	Bolt 1/4"x 1"	CS14100C
40	Bolt 1/4"x 1 1/4"	CS14114C
41	Lock washer 1/4"	LW14
42	Flat washer 1/4"	FW14
43	Bolt 3/8" x 1 1/4"	CS38114C
44	Lock washer 3/8"	LW38
45	Nut 3/8"	HN38C
46	Nipple 3/4" x 3" galvanized	GN343

47	Nut 1/4"	HN14C
48	Bolt 1/2" x 1 1/2"	CS12112C
49	Flat Washer 1/2"	FW12
50	Lock Washer	LW12
51	Nut 1/2"	HN12C



IMPORTANT:
 When ordering parts, give PART NUMBER and PART DESCRIPTION. Reference Numbers are used ONLY to point out parts in the drawing and are NOT to be used as ordering numbers.

Repair Parts Kits:

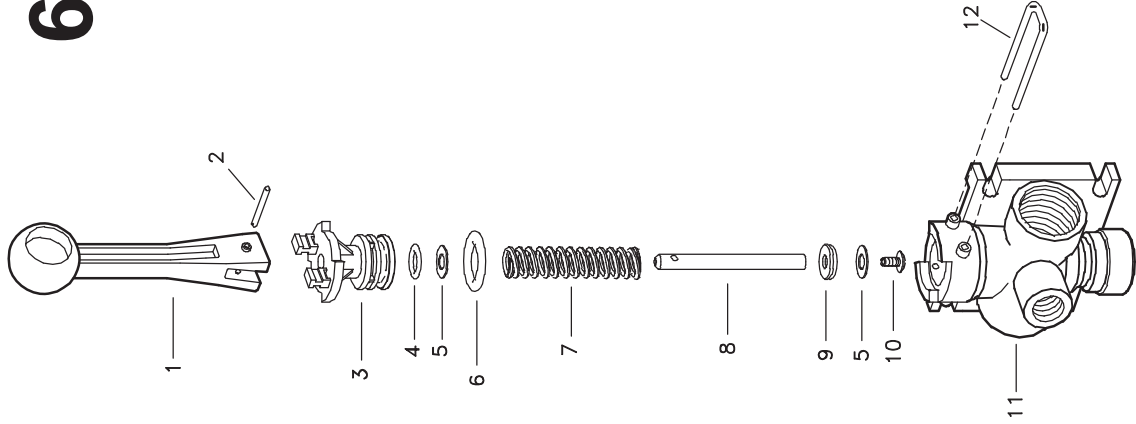
No. 3430-0380 Consists of (6) Ref. 7 Super Rollers, (1) Ref. 6 O-ring, and (2) Ref. 3 Viton seals.

No. 3430-0175 Consists of (6) Ref. 7 Polypropylene Rollers, (1) Ref. 6 O-ring, and (2) Ref. 3 Viton seals.

Ref. No.	Qty. Req'd.	Part Number	Description
1	1	2300-0021	Bearing Cover
2	2	2000-0010	Sealed Ball Bearing
3	2	2107-0002	Viton Seal (Standard)
3	2	2102-0001	Buna-N Seal (Optional)
3	2	2102-0001T	Teflon-coated Buna-N Seal (Optional)
4	4	2210-0004	Bolts
5	1	0200-6600C	Endplate (Cast Iron) with Seal
5	1	0200-6600N	Endplate (Ni-Resist) with Seal
5	1	0200-6600X	Endplate (SilverCast) with Seal
6	1	1720-0008	O-ring Gasket for Endplate
7	6	1005-0004	Super Roller (Standard)
7	6	1002-0004	Polypropylene Roller (Optional)
7	6	1052-0004	Buna-N Roller (Optional)
7	6	1055-0004	Teflon Roller (Optional)

Ref. No.	Qty. Req'd.	Part Number	Description
11	1 kit	3420-0023	Base Kit - Sold Separately Includes: (1) Base, (2) Bolts and (2) Washers
12	1	0100-6600C	Body (Cast Iron) with Seal
12	1	0100-6600N	Body (Ni-Resist) with Seal
12	1	0100-6600X	Body (SilverCast) with Seal
13	1	2404-0052	1" Hose Barb
14	1	2300-0023	Shaft Bearing Cover
15	1	0300-6600C	Rotor Assembly (Cast Iron)
15	1	0300-6600N	Rotor Assembly (Ni-Resist)
15	1	0300-6600X	Rotor Assembly (SilverCast)

6B Directo Valve

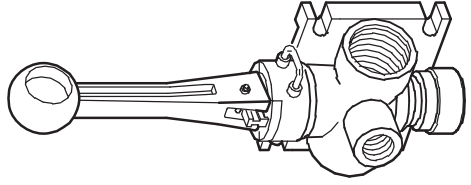
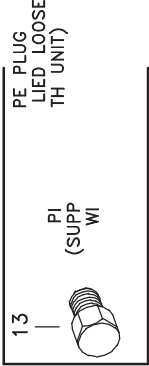


ITEM	PART NO.	DESCRIPTION
1	CP36301-NY	HANDLE, NYLON (GRAY)
2	CP36308-SS	GROOVE PIN, TYPE 303 STAINLESS STEEL
3	CP36302-PP	BODY INSERT, POLYPROPYLENE (BLACK)
4	CP7717-2/108-VI	O-RING, VITON
5	CP36307-PPB	WASHER, POLYPROPYLENE (BLACK) 2 RFQD
6	CP7717-2/209-VI	O-RING, VITON
7	CP36306-302SS	SPRING, TYPE 302 STAINLESS STEEL
8	CP36304-SS	STEM, TYPE 303 STAINLESS STEEL
9	CP38726-VI	SHUT-OFF WASHER, VITON
10	CP38725-SS	PHILLIPS HEAD SCREW, TYPE 302 STAINLESS STEEL
11	CP36303-PP	BODY (NPT), POLYPROPYLENE (BLACK) (FOR MODEL AA6B)
12	CP36309-302SS	RETAINING CLIP, TYPE 302 STAINLESS STEEL
13	8400-1/4-PPB	PIPE PLUG (NPT), POLYPROPYLENE (BLACK) (FOR MODEL AA6B)
		No. AA6B Directo Valve Manual Control Valve (NPT Threads)
		PK-AB6B-KIT Spare Parts Kit (Includes all items marked with *)

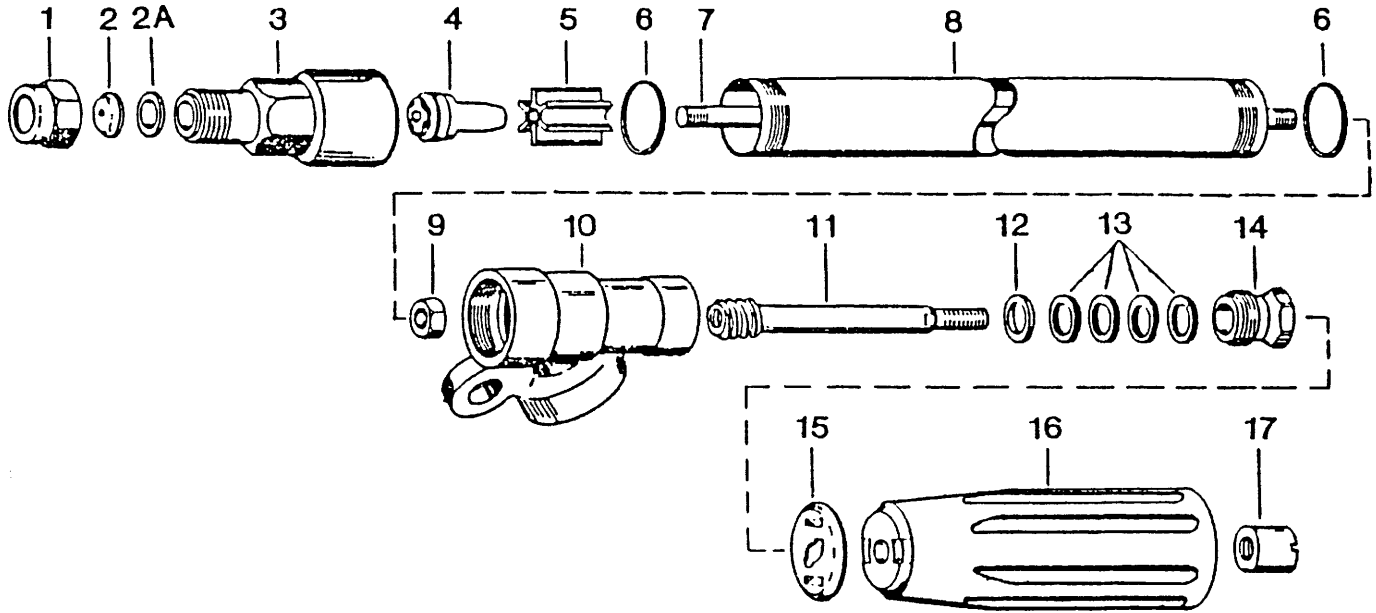
*

*

*



Models AA143 and AA143-AL GunJet Spray Guns



ITEM	PART NO.		DESCRIPTION
	BRASS (AA143)	ALUMINUM (AA143-AL)	
1	CP1325	CP1325-AL	Cap, Brass or Aluminum
2	D-**	D-**	Orifice Disc, Hardened Stainless Steel
* 2A	CP4743-NY	CP4743-NY	Gasket, Nylon
3	CP10566	CP10566-AL	Nozzle Housing, Brass or Aluminum
* 4	10565	10565-AL	Seat Plug, Seat Plate, Washer & Core Sub-Assembly, Brass or Aluminum
5	CP10571	CP10571-AL	Guide Vane, Brass or Aluminum
6	CP6943-AL	CP6943-AL	Gasket, Aluminum (2 Req'd)
7	CP10576	CP10576-416SS	Stem, Brass or Stainless Steel - Type 416
8	CP6604	CP6604-AL	Tubing, Brass or Aluminum
9	CP6618	CP6618-AL	Nut, Brass or Aluminum
10	CP6898-GH	CP6898-GH-AL	Inlet Body, Garden Hose (F) Conn., Br. or Alum. (For AA143-GH or AA143-143AL-GH)
	CP6898-1/2	CP6898-1/2-AL	Inlet Body, 1/2" NPT (F) Conn., Br. or Alum. (For AA143-1/2 or AA143-AL-1/2)
	CP6898-3/4	CP6898-3/4-AL	Inlet Body, 3/4" NPT (F) Conn., Br. or Alum. (For AA143-3/4 or AA143-AL-3/4)
11	CP5882	CP5882-NP	Hand Grip Stud, Brass or Brass, Nickel Plated
12	CP5883	CP5883-AL	Packing Washer, Brass or Aluminum
* 13	CP5809-LEA	CP5809-LEA	Packing, Thermo-Leather (4 Req'd)
14	CP5811	CP5811-AL	Packing Screw, Brass or Aluminum
15	CP5884-INP	CP5884-INP	Hand Grip Collar, Steel, Nickel Plated
16	CP5994-2-NY	CP5994-2-NY	Hand Grip, Nylon
17	CP5813	CP5813-AL	Hand Grip Nut, Brass or Aluminum
No. AA143-GH GunJet Spray Gun, Brass			
No. AA143-AL-GH GunJet Spray Gun, Aluminum			
No. AA143-1/2 GunJet Spray Gun, Brass			
No. AA143-AL-1/2 GunJet Spray Gun, Aluminum			
No. AA143-3/4 GunJet Spray Gun, Brass			
No. AA143-AL-3/4 GunJet Spray Gun, Aluminum			
No. AB143-Kit- Spare Parts Kit (Includes all items marked with *)			
No. AB143-AL-Kit- Spare Parts Kit (Includes all items marked with *)			

** Specify Orifice Disc Size

MOUNTING AND ASSEMBLY INSTRUCTIONS

FOR 3 POINT HITCH SPRAYERS 30 and 50 GALLON

Mount sprayer on tractor and use your top link to level frame. Use the lift arm adjustments to level tank and frame laterally. Install lift arm stabilizer to eliminate side sway while operating.

PUMP....

1. Install pump on tractor PTO shaft and make sure that the pump you are using is recommended for the PTO speed which you intend to use. When in doubt ask your dealer for assistance. Make sure the quick coupler is locked onto tractor PTO. Make sure pump stabilizer, (the L shaped bracket attached to pump), is placed so the pump will not rotate with PTO shaft.
2. Be sure to check arrows on the pump that indicate proper rotation of the pump.
3. Be sure the suction hose from tank to pump is not kinked or collapsed, and run it as straight as possible. Be sure all clamps are tight and in place.
4. Never operate any sprayer pump dry. When starting a new pump and every time it is operated thereafter, the pump should start displacing liquid within 15 seconds. If it does not stop the pump and check all hoses, valves, and strainer between the pump and tank.
5. After use, flush pump and the rest of system with clean water.
6. For winter storage or if freezing conditions will be encountered flush pump and rest of system with 50/50 mixture of water and antifreeze.

BEFORE GOING TO THE FIELD....

1. Look inside your new sprayer tank and make sure it is clean.
2. Fill tank about half full with clean water –DO NOT ADD ANY CHEMICALS AT THIS TIME.
3. Make sure the valve in the suction line on the bottom of the tank is full open.
4. Turn adjusting screw on the pressure regulator valve counter-clockwise until it is almost all the way out.

5. Start the pump slowly and increase speed of tractor PTO to about 1200 rpm while checking to make sure liquid is passing through pump and back into tank.
6. Turn the adjusting screw on pressure regulator valve clockwise and increase pressure to approximately 10 PSI above the pressure you expect to use in the field.
7. Open boom control valve and check all fittings for possible leaks. Check all hose connections make sure all clamps are tight.
8. Make very sure that at no time will pressure exceed the capacity of the gauge. This should be checked with the booms shut off and with pto at speed.
9. AT ALL TIME BE SURE YOU HAVE A RETURN WATER FLOW TO TANK. NEVER SHUT REGULATOR VALVE ALL THE WAY OFF.
10. Inspect the inside of the tank again for good agitation while the pump is running. Your VAN'S SPRAYER gives full time agitation while pump is running. If for some reason you do not have good agitation, it is possible some type foreign material is in return line or agitator. Recheck return line and agitator and clean as needed.
11. If the preceding steps have been followed and all corrective action necessary has been taken, you are now ready to calibrate your unit for field operation.

CALIBRATION....

It is necessary to calibrate your sprayer before beginning the spraying job. We will not attempt here to give you a calibration procedure, however we suggest the section in the Spraying Systems catalog on calibration, you can also refer to page 14 of this manual for calibration chart.

No matter what method you use, or what you use, please remember the following points:

1. Always calibrate with clean water only.
2. Always calibrate under field conditions.
3. Never rely on a tractor speedometer for accuracy.

CAUTIONS AND PRE-CAUTIONS(PLEASE READ CAREFULLY)

If you have followed all the instructions up to this point, your new VAN'S SPRAYER is ready to go to work and do a good job. These last instructions can and will make your spraying job more pleasant.

- A. **NEVER OPERATE SPRAYER WITHOUT PROPER SAFETY PRECAUTIONS.**

- B. **ALWAYS FILL TANK A LEAST HALF FULL AND HAVE PUMP OPERATING BEFORE ADDING CHEMICALS. IF YOU ARE USING A WETTABLE POWDER, PRE-MIX IN A BUCKET OF WATER BEFORE ADDING TO TANK.**
- C. **NEVER OPERATE PUMP AFTER TANK IS EMPTY –DO NOT OPERATE DRY.**
- D. **ALWAYS ADJUST PRESSURE REGULATOR WITH SPRAYER IN OPERATION AND NEVER EXCEED THE CAPACITY OF THE GAUGE.**
- E. **NEVER USE A METAL OBJECT TO CLEAN A NOZZLE, A TOOTHPICK, TOOTHBRUSH, MATCH, OR AIR WILL DO A BETTER AND SAFER JOB.**
- F. **WHEN TRANSPORTING YOUR SPRAYER ON A ROAD OR HIGHWAY, BE SURE TO SECURE THE BOOMS IN THE BRACKETS PROVIDED FOR THIS PURPOSE. ALWAYS USE FLASHER LIGHTS OR OTHER DEVICES TO GIVE ADEQUATE WARNING TO OTHER VEHICLES.**
- G. **REMEMBER—NOZZLE DO WEAR CAUSING SPRA PATTERN DISTORTION AND VARYING SPRAY VOLUME RATES. REPLACE NOZZLES AS OFTEN AS NEEDED TO ASSURE PROPER, UNIFORM SPRAY COVERAGE AND RATES. CALIBRATE DAILY. STAINLESS STEEL NOZZLES PROVIDE THE MOST WEAR RESISTANCE WHEN COMPARED TO OTHER TIP MATERIALS.**
- H. **ALWAYS USE CLEAN WATER AND CHECK STRAINER DAILY.**
- I. **CHECK AGITATION IN TANK FREQUENTLY—AT LEAST TWICE DAILY.**
- J. **KEEP ALL HOSES IN GOOD SHAPE –REPLACE WORN OR DAMAGED HOSE WHEN NEEDED—BE SURE SUCTION HOES IS IN GOOD CONDITION.**
- K. **CLEAN UP WHEN JOB IS COMPLETED. ALWAYS CLEAN SPRAYER AFTER EACH USE.**
- L. **NEVER CHANGE FROM ONE CHEMICAL TO ANOTHER WITHOUT THOROUGHLY CLEANING SPRAYER.**

CLEANING—STORING—MAINTENANCE

The least expensive thing you can do to prolong the life of your new VAN'S SPRAYER is to keep it clean. Please follow these simple instructions after the spraying job is done.

1. Clean thoroughly –Remove any chemical residues from tank, pump, hoses, boom strainers and nozzles by flushing completely the entire system with clean water and follow with a solution of approximately ONE QUART of household AMMONIA to 25 Gallons of water.
2. Remove all nozzle tips and strainers from booms and clean thoroughly with a toothbrush or toothpick. Leave nozzle tips to soak in can of light oil or diesel fuel.
3. DRAIN TANK COMPLETELY and leave it to dry outside. Make sure all chemical has been removed. THIS IS VERY IMPORTANT WITH WETTABLE POWDERS.
4. Remove pump and make sure no liquid is left inside. Fill pump with radiator rust inhibitor and plug outlets to keep inside during storage.
5. Drain complete system and fill with antifreeze during winter storage to prevent freezing.

6. STORE COMPLETE SPRAYER IN DRY PLACE OUT OF THE WEATHER.
7. CAUTION : NEVER CHANGE FROM ONE TYPE ONE CHEMICAL TO ANOTHER WITHOUT THOROUGHLY CLEANING SPRAYER.

TROUBLE SHOOTING THE SPRAYER

PROBLEM	PROBABLE CAUSE	POSSIBLE REMEDY
Erratic pressure indication on pressure gauge	air leaking into suction line	Tighten all fittings and hoses between pump and tank
	Trash in control valve or pressure gauge	Remove and clean parts
	Suction line kinked or clogged	Remove suction line and clean-check tank and strainer
	Air leak in suction hose	Replace hose
Pressure gauge fluctuates excessively	Suction hose collapsed	Replace hose
	Pump is sucking in air through the suction line or air has not been entirely evacuated from strainer	Examine the suction hose and make sure it is firmly secured. Run the pump with outlet hose open to evacuate air from pump
Pump loses suction	Suction strainer clogged	Clean strainer and tank
	Air leak in suction hose	Replace hose
	Suction hose collapsed	Replace hose
	Pump air locked	Remove discharge line and pump liquid through pump
	Pump worn and clearances too great	Replace or repair pump
Pump does not draw water	Seals worn out or deteriorated	Replace pump seals
	One or more valves are seated improperly	Examine the valve seatings and clean them
	Suction line is plugged or collapsed clogged strainer	Examine suction line Clean strained
Noisy pump	Excessive pump speed	Slow the pump
	Air leak in suction line	Replace suction hose
	Partially clogged strainer	Clean strainer
Pump shows decreased capacity	Suction strainer clogged	Clean strainer
	Air leak in suction hose	Rplace suction hose
	Moving parts worn	Replce worn parts
	Worn seal	Replace seal
	Pump roller stuck	Clean pump inside
	Pump operating too slow	Speed up pump
	Nozzles too large for capacity of pump	Use smaller nozzles or reduce number of nozzles on boom
Pump leaks	Worn out seal	Replace seal

FieldJet® Boomless Nozzles with Extra-Wide Flat Spray Projection

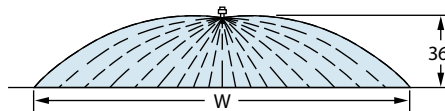


Type 1/4-KLC and Type 3/4-KLC
 1/4" NPT male and 3/4" NPT male
 pipe connections



The KLC FieldJet nozzle is typically used to spray areas not accessible with a boom sprayer. Its one-piece nozzle design projects spray to both sides to form a wide swath flat spray. The round orifice minimizes clogging. Uniformity across the swath is not as good as with a properly operated boom sprayer.* Available in brass or stainless steel.

*Uniformity can be optimized by double overlapping spray swaths on successive sprayer passes. Remember, this also doubles the application volume.



How to order:

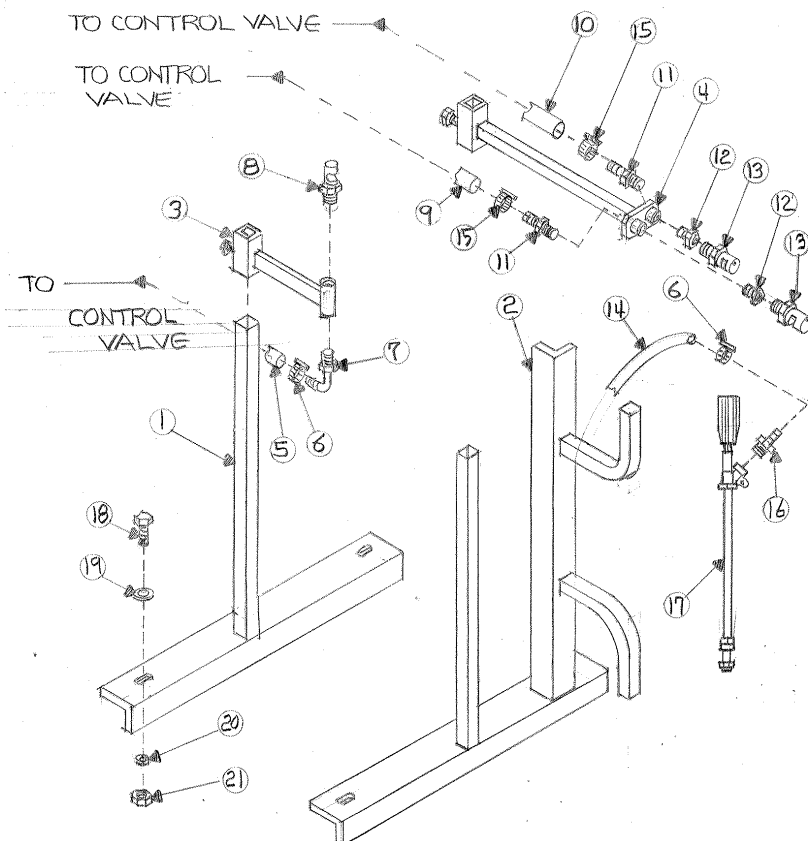
Specify part number and material.

Example: 1/4KLC-SS18 – Stainless Steel

NOZZLE	PIPE CONNECTION	PSI	CAPACITY ONE NOZZLE IN GPM	"W" IN FEET	GPA				GALLONS PER 1000 SQ. FT.			
					3 MPH	4 MPH	5 MPH	8 MPH	3 MPH	4 MPH	5 MPH	8 MPH
1/4-KLC-5	1/4"	20	0.71	17	6.9	5.2	4.1	2.6	.16	.12	.09	.06
		30	0.87	18	8.0	6.0	4.8	3.0	.18	.14	.11	.07
		40	1.00	21	7.9	5.9	4.7	2.9	.18	.13	.11	.07
1/4-KLC-9	1/4"	20	1.27	18	11.6	8.7	7.0	4.4	.27	.20	.16	.10
		30	1.56	19	13.5	10.2	8.1	5.1	.31	.23	.19	.12
		40	1.80	21	14.1	10.6	8.5	5.3	.32	.24	.19	.12
1/4-KLC-18	1/4"	20	2.55	20	21	15.8	12.6	7.9	.48	.36	.29	.18
		30	3.12	21	25	18.4	14.7	9.2	.56	.42	.34	.21
		40	3.60	22	27	20	16.2	10.1	.62	.46	.37	.23
1/4-KLC-36	1/4"	20	5.09	22	38	29	23	14.3	.87	.66	.52	.33
		30	6.24	24	43	32	26	16.1	.98	.74	.59	.37
		40	7.20	26	46	34	27	17.1	1.0	.78	.63	.39
3/4-KLC-50	3/4"	20	7.07	23	51	38	30	19.0	1.2	.87	.70	.44
		30	8.66	26	55	41	33	21	1.3	.94	.75	.47
		40	10.0	28	59	44	35	22	1.3	1.0	.81	.51
3/4-KLC-72	3/4"	20	10.2	25	67	50	40	25	1.5	1.2	.92	.58
		30	12.5	29	71	53	43	27	1.6	1.2	.98	.61
		40	14.4	31	77	57	46	29	1.8	1.3	1.1	.66
3/4-KLC-108	3/4"	20	15.3	28	90	68	54	34	2.1	1.5	1.2	.77
		30	18.7	33	94	70	56	35	2.1	1.6	1.3	.80
		40	21.6	36	99	74	59	37	2.3	1.7	1.4	.85

Note: Always double check your application rates. Tabulations are based on spraying water at 70°F (21°C). See pages 173–187 for useful formulas and information.

Tip bracket is shown in transport position.
Tip should point to rear. See drawing below



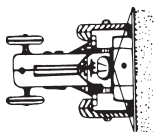
ITEM NO.	DESCRIPTION	PART NO.
1	KLC tip mount L30,50,85 (tip only)	H10
2	KLC tip mount with hand gun L30,50,85	H22
3	KLC tip slide	I99-017
4	Boominator tip slide	I99-008
5	Hose black ag 3/8"	10031720
6	Hose clamp 3/8"	6H
7	Elbow 1/4"mpt x 3/8" barb 90 nylon	EL1438
8	KLC tip (size 18)	1/4klc-18
9	Hose black ag 3/8"	10031720
10	Hose black ag 3/8"	10031720
11	Hose shank 3/8"mpt x 1/2" barb nylon	A3812
12	Reducer bushing 3/8"mpt x 1/4"ftp gal	GB3814
13	Boominator tip	BN1400LR
14	Hose black ag 1/2"	10031730
15	Hose clamp 1/2"	8H
16	Hose shank 3/4"mpt x 3/8" barb nylon	A3438
17	Hand gun	AA143AL
18	Bolt 1/2" x 1 1/2"	CS12112C
19	Flat washer 1/2"	FW12
20	Lock washer 1/2"	LW12
21	Nut 1/2"	HN12C

L85 KLC

Tip bracket is shown in transport position.
Tip should point to rear.



(PRICES SUBJECT TO CHANGE WITHOUT NOTICE)



van's

EQUIPMENT COMPANY

We Appreciate You and Your Business!

P.O. BOX 3157 • 2169 SYLVESTER HIGHWAY • MOULTRIE, GEORGIA 31776-3157

(229) 985-1101