

# 30 AND 50 GALLON TRAILERS

Since VAN'S EQUIPMENT'S beginnings we have used a generic owners manual. It was just too costly to have printed and keep on hand owner manuals specific to each size and type sprayer we manufacture.

We now have the technology in house to create sprayer specific manuals and to print them only as needed. We think we have made a good beginning, but these manuals are still in the development stage. At this point we would appreciate the input of our end user customer and our dealers as to how we can make these manuals more useful and user friendly.

This is the prototype manual. Please look over the manual and give us your input.

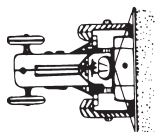
CALL VANS EQUIPMENT AT 1-800-765-1101 AND ASK FOR CRAIG

We appreciate your input on these manuals.

Thanks Vans Equipment



(PRICES SUBJECT TO CHANGE WITHOUT NOTICE)



**van's**

**EQUIPMENT COMPANY**

*We Appreciate You and Your Business!*

P.O. BOX 3157 • 2169 SYLVESTER HIGHWAY • MOULTRIE, GEORGIA 31776-3157

(229) 985-1101

WHEN SELECTING EQUIPMENT FOR FARMING THE NAME VAN'S means availability, reliability, and proven superiority. Maintaining a close association with farming customers has resulted in equipment design and manufacturing philosophy that reflects the exacting requirements of our customers.

Van's Equipment Company, Inc. appreciates your purchase of a new spray unit. This unit, is designed to give years of service with proper care. The following pages will be helpful in set-up and maintenance of your new unit.

PLEASE READ THIS MANUAL CAREFULLY BEFORE INITIAL START-UP IS ATTEMPTED.

WE APPRECIATE YOU  
AND YOUR BUSINESS

## INDEX

PAGE NO.....	DESCRIPTION
1.....	Model Description and Overview
2-6.....	Maintanance and Precautions
7.....	Trouble Shooting
8.....	Breakdown and Parts List
9.....	Pump Parts List,(Hypro 4101C standard)
10.....	Spray Gun Parts List,(Spraying Systems AA43- standard)
11.....	Valve Parts List,(Spraying Systems AA6B standard)

**30 & 50 GALLON  
PULL TYPE SPRAYER  
2 WHEEL OR 3 WHEEL**

1



Shown  
With Std. 2 Wheel Trailer ,(With optional booms)

	Model No.	Price	Model No.	Price
12 Volt Pump	T301	1,511.00	T501	1,518.00
3 HP 4 Roller Pump 4101C	T303	2,542.00	T503	2,567.00
3 HP Diaphragm Pump IOTA -17	T305	3,338.00	T505	3,353.00
3 HP Piston Pump 5330-HX	T307	2,782.00	T507	2,807.00

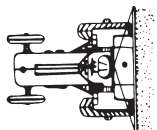
This handy little 2 wheel trailer is ideally suited to hook behind your lawn mower or ATV for easy mobility. This sprayer also has the option of a third wheel and handle assembly for pulling by hand and eliminating the need for a tow vehicle. It can be changed back and forth from 2 wheel to 3 wheel in just about 30 seconds by the operator alone. This versatility has made this sprayer very popular in many markets, including the homeowner for lawn and garden spraying, the cattle and hog producer for livestock spraying, nurseries and greenhouse growers. It can easily be pulled up and down narrow aisles by hand. There is no end to the many uses of this compact sprayer unit.

Standard Features Include:

- 1) 30 or 50 Gallon Polyethylene Tank
- 2) 5" Fillwell
- 3) Heavy Duty Frame with 5 Year Warranty
- 4) Pneumatic Tires
- 5) Various Pump Options
- 6) 25 Feet Hose & Handgun
- 7) Fully Assembled and Factory Tested
- 8) IOTA 17 Diaphragm Pump 275 PSI 4.4 GPM
- 9) 4 Roller Pump
- 10) 12 Volt Flo-Jet

- A Tank . . . . 30 Gal. # 47026
- 50 Gal. # 470147
- B Frame . . . . 30 Gal. # T230NT
- 50 Gal. # T250NT

OPTION: Third Wheel & Handle Assembly	
Part No. T230H	Add: 151.00



**van's**

**EQUIPMENT COMPANY**

P.O. BOX 3157 • 2169 SYLVESTER HIGHWAY • MOULTRIE, GEORGIA 31776-3157

(229) 985-1101

*We Appreciate You and Your Business!*

(PRICES SUBJECT TO CHANGE WITHOUT NOTICE)

## **MOUNTING AND ASSEMBLY INSTRUCTION**

### **FOR 3 POINT HITCH SPRAYERS 200 AND 300 GALLON 12 ROW**

Mount the sprayer on tractor and use top link to level frame. Use the lift arm adjustments to level tank and frame laterally. Install lift arm stabilizer to eliminate side sway. Attach the pump to tractor.

#### **FOR PTO ROLLER PUMPS:**

**IF YOU EVER INTEND TO USE ROUND-UP OR ANY SUCH CHEMICAL YOU MUST USE THE ROUND-UP READY PUMP.**

Install the pump on the tractor PTO shaft and make sure that the pump you are using is recommended for PTO speed which you intend to use. If in doubt ask your dealer.

If your pump is equipped with a quick coupler, make sure that it is locked onto tractor PTO shaft and tighten set screw.

Fasten the stabilizer to a fixed point on the tractor so that pump will not rotate with shaft.

#### **FOR PTO DRIVEN CENTRIFUGAL PUMPS:**

Make sure pump is recommended for the PTO speed which you intend to use. If in doubt ask your dealer for assistance.

Slip the PTO coupler all the way up on the splined tractor shaft and tighten all set screws making sure the pump is properly centered on the shaft to eliminate wobble.

Make sure the outlet(discharge) port on the pump is mounted in the VERTICAL POSITION. If you are unable to mount the pump in this manner as is, the rear housing plate may be removed and rotated to a vertical position. This is necessary to insure proper priming of pump.

Fasten the stabilizer to a fixed point on the tractor so the pump will not rotate with shaft.

#### **FOR HYDRAULIC DRIVEN CENTRIFUGAL PUMPS:**

Mount a hydraulic centrifugal pump only after reading the complete instruction manual provided by pump manufacturer.

If you do not have this manual, ask your dealer for assistance.

A hydraulic motor driven centrifugal pump is extremely versatile in regard to where it may be mounted, however, one thing you must keep in mind is that the pump must be mounted at /or below liquid level of the tank.

**IMPORTANT:** Be sure to connect hydraulic hoses from the tractor outlet to the hydraulic motor inlet and the tractor return line to the outlet of the hydraulic motor. These hoses must be hooked correctly to

achieve the correct rotation on the pump and to prevent damage to the unit or system. Pump rotation is clockwise when facing the suction port of pump.

#### **FOR DIAPHRAGM PUMPS:**

Always mount pump with the oil sight tube in an upwards position. DO NOT OPERATE without safety shields in place.

#### **BEFORE RUNNING THE PUMP:**

- A. Be sure that oil is halfway up the sight tube. If necessary, fill to correct level with 20W-30W non detergent oil.
- B. Be sure the suction hose barb is tightly screwed onto the suction union.
- C. Do not restrict the pump on the suction side. Use a 2-braid suction hose of at least the same inside diameter as the pump ports—larger with long suction lines. Keep the line as short as possible. Avoid all unnecessary bends, elbows or kinks in hose. Make sure all connections are tight and do not leak air.
- D. Be sure to use line strainer with 20 mesh, this comes standard on any VAN,S sprayer with diaphragm pumps
- E. Be sure to check charge in pulsation damper. Damper should be charged with air to 20 % of operating pressure. Minimum charge should be 5 PSI.
- F. RUN THE PUMP AT ZERO PRESSURE for one minute to remove air from the system. Do not exceed the pump's recommended maximum speed and pressure. There will be no performance advantage and pump life will be reduced. Pumps run over recommended speed or pressure are not subject to warranty.
- G. MAINTENANCE:
  1. After use, flush pump with clean water.
  2. Change oil every 200 hours or at the end of every spray season. To drain oil from pump, remove the drain plug, (see manufacturer's manual), and slowly turn pump shaft until all oil is drained. To fill pump with oil, slowly pour oil into sight tube while turning the pump shaft. Turning the pump shaft purges air out of the crankcase.
  3. For winter storage or if freezing conditions will be encountered, flush pump with 50/50 mixture of water and antifreeze.

#### **NOTES TO REMEMBER FOR ALL PUMPS:**

- A. Be sure to check all arrows on the pump that indicate proper rotation of pump.
- B. Be sure pump is correct for the PTO speed you intend to use.
- C. Be sure that the suction hose from tank to pump is as short as possible—cut if necessary—and be sure that hose is not kinked or collapsed—run it as straight as possible.
- D. Be sure that all hose clamps are tight and in place.
- E. **NEVER OPERATE ANY SPRAYER PUMP DRY**—Be sure pump is primed and supplied with liquid when it is operating. Damage will occur to the seals in a roller pump and also to the rollers. Damage will occur to seal of a centrifugal pump if operated dry.

When starting a new pump and every time it is operated thereafter, the pump should start displacing liquid within 18 seconds. If it does not, stop the pump and check all hoses, valves, and strainer between pump and tank.

#### **BOOM ASSEMBLY AND SETUP:**

The boom on the 200 and 300 gallon 12 row sprayers are detached from boom yoke, (item 20 page 8), for shipping, the chains, (item 14 page 8), are left connected. Reattached booms, with bolt, (item 21 page 8), and nut, (item 19 page 8), if necessary. Make sure the tip bodies face to the rear of sprayer. Be sure boom feed line hoses are correctly connected to control valve. You can determine this by operating sprayer with clear water, and switching hoses if necessary. **BE SURE YOU DO NOT SWITCH ANY HOSES OTHER THAN BOOM FEED LINES.**

Adjust booms to proper height for job you wish to do. If you are unable to determine what is correct for your job, please contact your local county agent or ask your vans dealer. In most cases nozzles are placed 19-20 inches above surface to be sprayed.

Be sure that your booms are level so that the nozzles on outer ends are exactly the same height as those in center.

Before going to the field look at each and every nozzle, make sure they are all the same size, and have tip strainers in place and are clean.

#### **BEFORE GOING TO THE FIELD:**

1. Look inside your new sprayer tank and make sure it is clean.
2. Fill tank about half full with clean water—DO NOT ADD ANY CHEMICALS.
3. Make sure all valves in the suction line on bottom of tank are full open.
4. Turn adjusting screw on pressure regulator valve in the counter-clockwise direction until it is almost all the way out.
5. Start pump slowly and increase speed of tractor to about 1200 RPM while checking to make sure liquid is passing through the pump and back into tank.
6. Turn adjusting screw on pressure regulator clockwise and increase pressure to approximately 10 PSI above the pressure you expect to use in field.
7. Open boom control valve and check all fittings for possible leaks. Check all hose connections and make sure all clamps are tight.
8. **MAKE SURE AT NO TIME WILL THE PRESSURE EXCEED THE CAPACITY OF THE PRESSURE GAUGE.**
9. Inspect the inside of your tank for good agitation while pump is in operation. Your VAN,S Sprayer gives full time agitation while pump is running. If you do not have good agitation, it is possible that some piece of foreign material can enter the system and clog agitator. Check if necessary by removing the agitator for inspection.

If the preceding steps have been followed properly and all corrective action necessary has been taken, you are now ready to calibrate your unit for field operation.

#### **CALIBRATION:**

It is necessary to calibrate your sprayer before beginning the spray job. We will not attempt here to give you a calibration procedure, however we suggest the section in the Spraying System catalog on calibration, your local or state pesticide manual, or calling your VAN's dealer. You can also look on page 11 of this manual for the application table for our standard tip, which unless you specified another tip, is a **TP8003 brass fan tip**.

No matter what method you use, or what you use, please remember the following points:

1. Always calibrate with clean water only.
2. Always calibrate under field conditions.
3. Never rely on a tractor speedometer for accuracy.
4. Make sure all nozzles are the same size, are spraying properly, and all strainers are clean.
5. Due to long boom lines, there can be a loss of pressure between pressure gauge and tips. It is usually normal to indicate a slightly higher reading on gauge, (approximately 5-8 PSI) than that indicated by application chart. For this reason calibrate your sprayer often.

#### **CAUTIONS AND PRE-CAUTIONS, (PLEASE READ CAREFULLY)**

If you have followed all the instructions up to this point, your new VAN'S SPRAYER is ready to go to work and do a good job. These last instructions can and will make your spraying job more pleasant.

- A. NEVER OPERATE SPRAYER WITHOUT PROPER SAFETY PRECAUTIONS.**
- B. ALWAYS FILL TANK AT LEAST HALF FULL AND HAVE PUMP OPERATING BEFORE ADDING CHEMICALS. IF YOU ARE USING WETTABLE POWDER, PRE-MIX IN A BUCKET OF WATER BEFORE ADDING TO TANK.**
- C. NEVER OPERATE PUMP AFTER TANK IS EMPTY-DO NOT OPERATE DRY.**
- D. ALWAYS ADJUST PRESSURE REGULATOR WITH SPRAYER IN OPERATION AND NEVER EXCEED THE CAPACITY OF THE GAUGE.**
- E. NEVER USE A METAL OBJECT TO CLEAN A NOZZLE, A TOOTHPICK, TOOTHBRUSH, MATCH, OR AIR WILL DO A BETTER AND SAFER JOB.**
- F. WHEN TRANSPORTING YOUR SPRAYER ON A ROAD OR HIGHWAY, BE SURE TO SECURE THE BOOMS IN THE BRACKETS PROVIDED FOR THIS PURPOSE. ALWAYS USE FLASHER LIGHTS OR OTHER DEVICES TO GIVE ADEQUATE WARNING TO OTHER VEHICLES.**
- G. REMEMBER-NOZZLES DO NOT CAUSE SPRAY PATTERN DISTORTION AND VARYING SPRAY VOLUME RATES. REPLACE NOZZLES AS OFTEN AS NEEDED TO ASSURE PROPER AND UNIFORM SPRAY COVERAGE AND RATES. CALIBRATE DAILY. STAINLESS STEEL NOZZLES PROVIDE THE MOST WEAR RESISTANCE WHEN COMPARED TO OTHER TIP MATERIAL.**
- H. ALWAYS USE CLEAN WATER AND CHECK STRAINER DAILY.**

- I. **CHECK AGITATION IN TANK FREQUENTLY—AT LEAST TWICE DAILY.**
- J. **KEEP ALL HOSES IN GOOD SHAPE – REPLACE WORN OR DAMAGED HOSE AS NEEDED-BE SURE SUCTION HOSE IS IN GOOD CONDITION.**
- K. **CLEAN UP WHEN JOB IS DONE.ALWAYS CLEAN SPRAYER AFTER EACH USE.**
- L. **NEVER CHANGE FROM ONE CHEMICAL TO ANOTHER WITHOUT THOROUGHLY CLEANING SPRAYER.**

#### **CLEANING- STORING-MAINTENANCE**

The least expensive thing you can do to prolong your new sprayers life is to keep it clean. Please follow these simple instruction after spraying job is done.

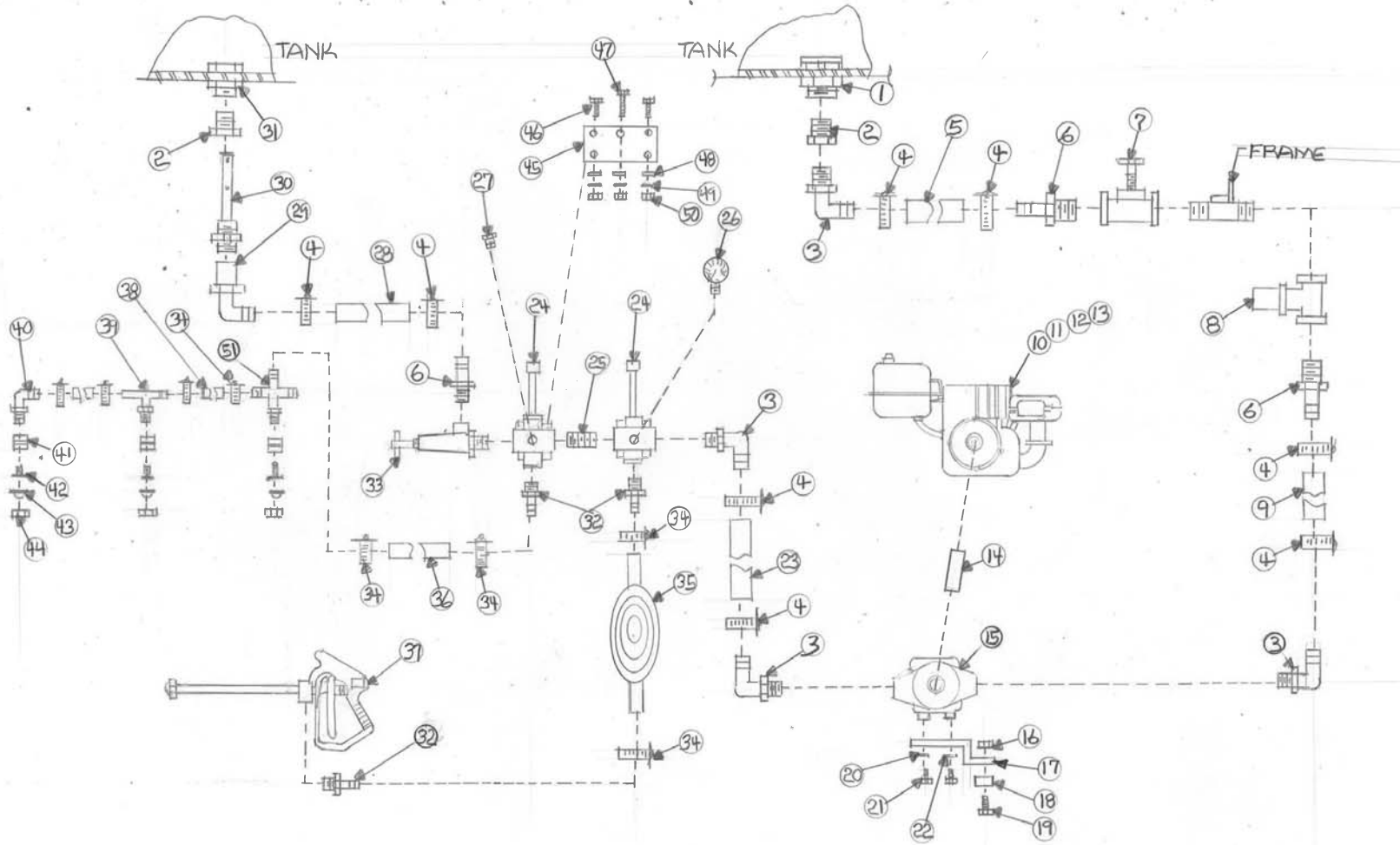
1. Clean thoroughly-Remove any chemical residues from tank,pump,boom strainers,and nozzles by flushing completely the entire system with clean water and follow with a solution of approximately ONE QUART of household AMMONIA to25 gallons water.
2. Remove all nozzle tips and strainers from booms and clean thoroughly with a toothbrush or toothpick. Leave nozzle tip to soak in can of oil or diesel fuel.
3. DRAIN TANK COMPLETELY and leave it to dry outside. Make sure all chemical has been removed THIS IS VERY IMPORTANT WITH WETTABLE POWDERS.
4. Remove pump and make sure no liquid is left inside. Fill pump with radiator rust inhibitor and plug outlets keep inside during storage.
5. Drain complete system and fill with antifreeze during winter storage to prevent freezing.
6. Store complete sprayer in dry place out of weather. Keeping sprayer out sunlight will lessen the UV effects on tank.
7. Caution: Never change from one type of chemical to another without thoroughly cleaning sprayer.



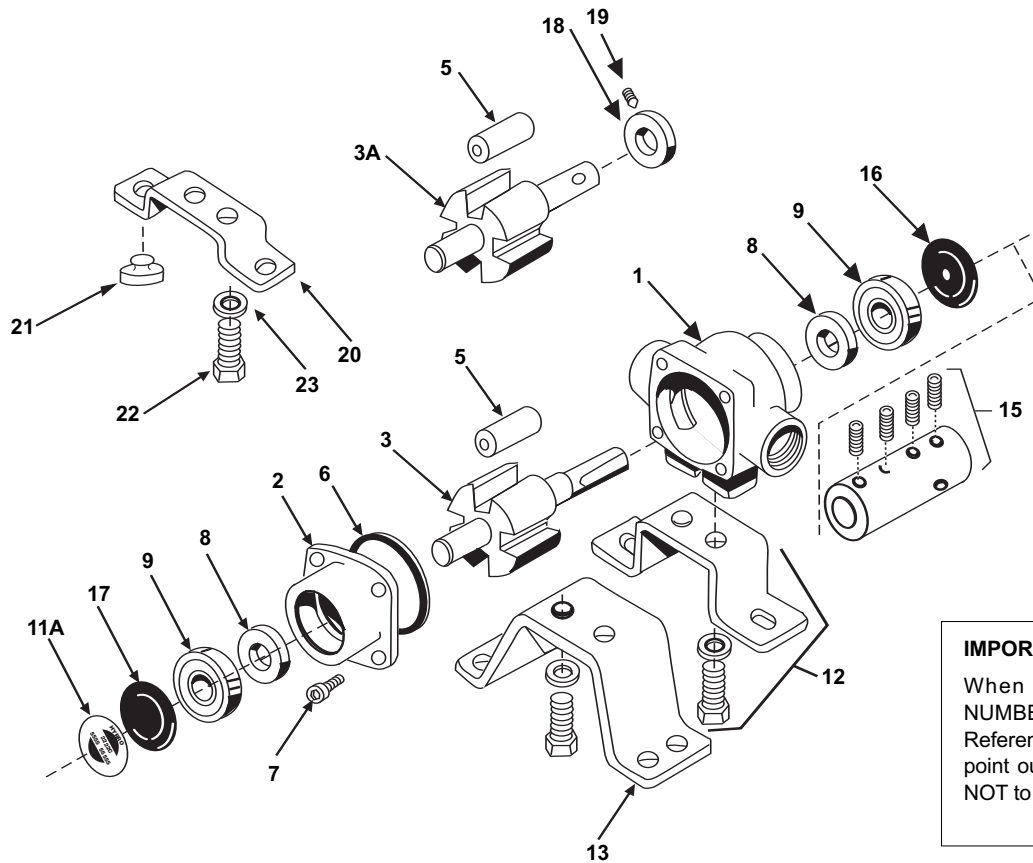
<b>PROBLEM</b>	<b>PROBABLE CAUSE</b>	<b>POSSIBLE REMEDY</b>
Erratic pressure indication on pressure gauge	air leaking into suction line	Tighten all fittings and hoses between pump and tank
	Trash in control valve or pressure gauge	Remove and clean parts
	Suction line kinked or clogged	Remove suction line and clean-check tank and strainer
	Air leak in suction hose	Replace hose
Pressure gauge fluctuates excessively	Suction hose collapsed	Replace hose
	Pump is sucking in air through the suction line or air has not been entirely evacuated from strainer	Examine the suction hose and make sure it is firmly secured. Run the pump with outlet hose open to evacuate air from pump
Pump loses suction	Suction strainer clogged	Clean strainer and tank
	Air leak in suction hose	Replace hose
	Suction hose collapsed	Replace hose
	Pump air locked	Remove discharge line and pump liquid through pump
	Pump worn and clearances too great	Replace or repair pump
Pump does not draw water	Seals worn out or deteriorated	Replace pump seals
	One or more valves are seated improperly	Examine the valve seatings and clean them
	Suction line is plugged or collapsed clogged strainer	Examine suction line Clean strained
Noisy pump	Excessive pump speed	Slow the pump
	Air leak in suction line	Replace suction hose
	Partially clogged strainer	Clean strainer
Pump shows decreased capacity	Suction strainer clogged	Clean strainer
	Air leak in suction hose	Replace suction hose
	Moving parts worn	Replace worn parts
	Worn seal	Replace seal
	Pump roller stuck	Clean pump inside
	Pump operating too slow	Speed up pump
	Nozzles too large for capacity of pump	Use smaller nozzles or reduce number of nozzles on boom
Pump leaks	Worn out seal	Replace seal

ITEM NO.	DESCRIPTION	PART NO,
1	Tank Fitting 1 1/4" Anti-Vortex Poly	63065
2	Reducer Bushing 1 1/4" MPT x 3/4" FPT Nylon	RB11434
3	Elbow 3/4" MPT x 1/2" Barb 90 Nylon	EL3412
4	Hose Clamp 1/2"	12H
5	Hose Black Ag. 1/2"	10031730
6	Hose Shank 3/4" MPT x 1/2" Barb Nylon	A3412
7	Gate Valve 3/4" FPT Brass	34BGV
8	Strainer 3/4" FPT 40 Mesh	RVF1212PE40P
9	Hose Black Ag. 1/2"	10031730
10	Engine 3.5 Briggs 3/4" Shaft	91232-1035
11	Bolt 5/16" x 1 3/4"	CS516134C
12	Lock Washer 5/16"	LW516
13	Nut 5/16"	HN516C
14	Pump Adaptor 5/8" x 3/4"	1320-0015
15	Pump 6 Roller	6500C
16	Lock Nut 7/16"	HLN716C
17	Pump Stabilizer	T35PS
18	Shock Cushion	TRW82123
19	Bolt 7/16" x 2 1/2"	CS716200C
20	Flat Washer 5/16"	FW516
21	Bolt 5/16" x 3/4"	CS51634C
22	Lock Washer 5/16"	LW516
23	Hose Black Ag. 1/2"	10031720
24	Control Valve	AA6B
25	Nipple 3/4" x Close Nylon	M34
26	Pressure Gauge 0-160 PSI Dry	SG-160
27	Plug 1/4" Nylon	F14
28	Hose Red Ag. 1/2"	3204-0410
29	Elbow 3/4" FPT x 1/2" Barb 90 Nylon	EL3412F
30	Jet Agitator	3371-0019
31	Tank Fitting 3/4" Poly	60401
32	Hose Shank 1/2" MPT x 3/8" Barb Nylon	A1238
33	Pressure Relief Valve	13895-6
34	Hose Clamp 3/8"	6H
35	Hose Black Ag. 3/8"	10031720
36	Hose Black Ag. 3/8"	10031720
37	Spray Gun	AA43LA-AL6
38	Hose Black Ag. 3/8"	10031720
39	Hose Connector Tee 3/8"	3NTT38
40	Hose Connector Elbow 3/8"	3NTL38
41	Boom Clamp 1" Square	AA111SQ-1
42	Tip Strainer 50 Mesh	8079-PP-50
43	Tip Brass Fan	TP8003
44	Tip Cap	CP8027-NYB
45	Valve Stand Plate	VS6B2
46	Bolt 1/4" X 1"	CS14100C

47	Bolt 1/4" X 1 1/4"	CS14114C
48	Lock Washer 1/4"	LW14
49	Flat Washer 1/4"	FW14
50	Nut 1/4"	HN14C
51	Hose Connector 3/8" Cross	3T38C



# Series 4000



**IMPORTANT:**  
When ordering parts, give PART NUMBER and PART DESCRIPTION. Reference Numbers are used ONLY to point out parts in the drawing and are NOT to be used as ordering numbers.

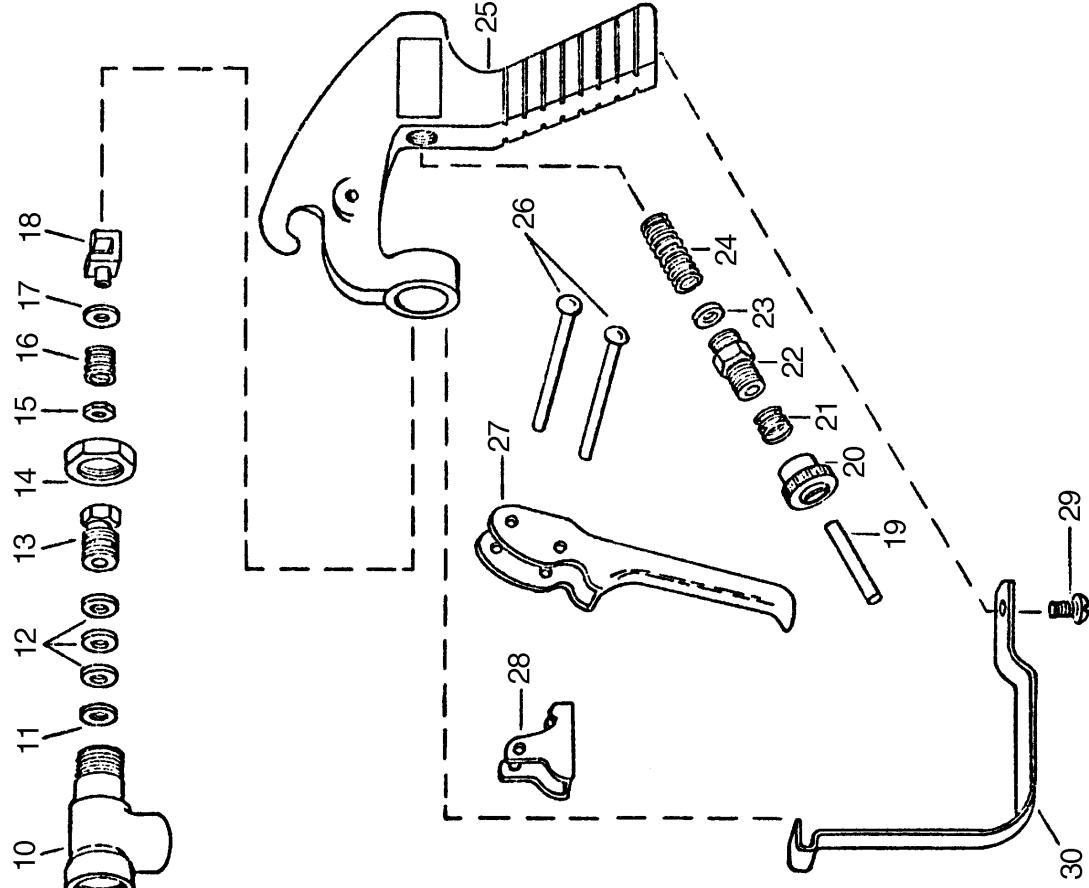
Ref. No.	Qty. Req'd.	Part Number	Description
1	1	0100-4001C	Body (Cast Iron) with Std. Seal (4001)
1	1	0100-4101C	Body (Cast Iron) with Std. Seal (4101)
1	1	0100-4001N	Body (Ni-Resist) with Std. Seal (4001)
1	1	0100-4101N	Body (Ni-Resist) with Std. Seal (4101)
1	1	0100-4001X	Body (SilverCast) with Std. Seal (4001)
1	1	0100-4101X	Body (SilverCast) with Std. Seal (4101)
2	1	0200-4001C	Endplate (Cast Iron) with Std. Seal (4001)
2	1	0200-4101C	Endplate (Cast Iron) with Std. Seal (4101)
2	1	0200-4001N	Endplate (Ni-Resist) with Std. Seal (4001)
2	1	0200-4101N	Endplate (Ni-Resist) with Std. Seal (4101)
2	1	0200-4001X	Endplate (SilverCast) with Std. Seal (4001)
2	1	0200-4101X	Endplate (SilverCast) with Std. Seal (4101)
3	1	0300-4001C	Rotor (Cast Iron) & Shaft Assembly (4001)
3	1	0300-4101C	Rotor (Cast Iron) & Shaft Assembly (4101)
3	1	3430-0765	Rotor Assembly (Std. 4001 Ni-Resist & XL)
3	1	3430-0766	Rotor Assembly (Std. 4101 Ni-Resist & XL)
3A	1	3430-0780	Rotor Assembly (Std. 4001 Ni-Resist & XL)
3A	1	3430-0781	Rotor Assembly (Std. 4101 Ni-Resist & XL)
5	4	1005-0002	Super Rollers (Std.)
5	4	1002-0002	Polypropylene Rollers (Optional)
5	4	1055-0002	Teflon Rollers (Optional)
6	1	1720-0104	O-Ring Gasket for Endplate
7	4	2220-0018	Endplate Screw
8	2	2107-0002	Viton Seal (Std.)
8	2	2102-0001	Buna-N Seal (Optional)
8	2	2102-0001T	Teflon Coated Buna-N Seal (Optional)

Ref. No.	Qty. Req'd.	Part Number	Description
9	2	2000-0010	Ball Bearing (High temp. grease)
11A	1		Name Plate (Specify pump model #)
12	1	3420-0024	Base Kit — <b>Sold Separately</b> Includes: 1 Base, 2 Bolts, and 2 Lock washers for mounting pump to electric motors with 3-1/2" shaft centerline
13	1	3420-0025	Base Kit — <b>Sold Separately</b> Includes: 1 Base, 2 Bolts, and 2 Lock washers for mounting pump to electric motors/gas engines with 4-3/16" shaft centerlines
15	1 kit	1320-0016	Adapter with 4 set screws for gas engine mount (5/8" x 5/8") — <b>Sold Separately</b>
15	1 kit	1320-0015	Adapter (5/8" x 3/4") — <b>Sold Separately</b>
16	1	2300-0023	Shaft Bearing Cover
17	1	2300-0021	Bearing Cover
18	1	1420-0001	Locking Collar
19	1	2230-0001	Set Screw
20	1	1510-0054	Base — <b>Sold Separately</b>
21	2	1450-0003	Bumper — <b>Sold Separately</b>
22	2	2210-0003	Bolt — <b>Sold Separately</b>
23	2	2260-0002	Lock Washer — <b>Sold Separately</b>

**Repair Parts Kit No. 3430-0390** Consists of: (4) Ref. 5 Super Rollers, (1) Ref. 6 O-Ring Gasket, (2) Ref. 8 Viton Seals.

**Repair Parts Kit No. 3430-0158** Consists of: (4) Ref. 5 Polypropylene Rollers, (1) Ref. 6 O-Ring Gasket, (2) Ref. 8 Viton Seals.

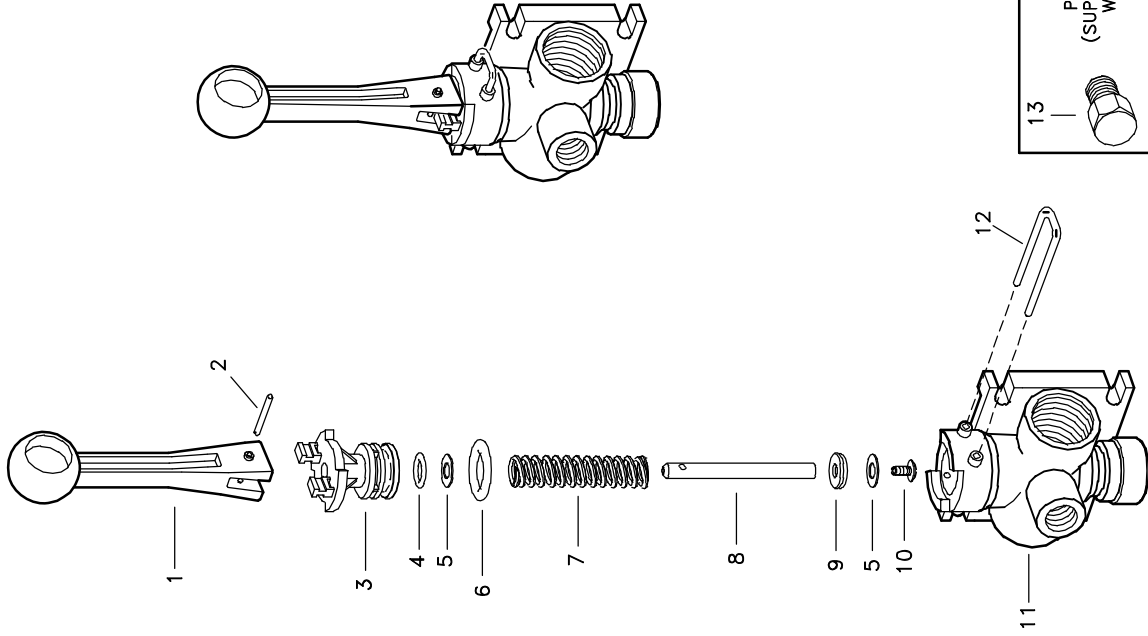
# No. 43L & No. 43H GUNJETS (13" Extension)



Item	Part No.	Description
1	Brass (#43-)	
2	Aluminum (#43-AL)	
3	1325-AL	Cap, Brass or Aluminum
4	D-**	Orifice disc, hardened stainless steel
5	4743-NY	Gasket, nylon
6	10566-AL	Nozzle housing, brass or aluminum
7	10565-AL	Seat plug, seat plate, washer & core subassy.
8	10571-AL	Guide vane, brass or aluminum
9	6943-AL	Gasket, aluminum (2 Req'd)
10	19238-416SS	Stem, type 416 stainless steel
11	6604-AL	Tubing, brass or aluminum
12	6492-AL	Inlet body, brass or aluminum
13	6601-302SS	Packing washer, type 302 stainless steel
14	6602-LEA	Packing, leather (3 Req'd) (Standard)
15	6602-TEF	Packing, teflon (3 Req'd) (Optional)
16	19237-AL	Packing screw, brass or aluminum
17	6599-IZP	Locknut, brass or steel-zinc plated
18	9641-INP	Stem nut, steel-nickel plated
19	6595-SS	Trigger stop spring, stainless steel
20	7991-IZP	Washer, steel-zinc plated
21	6597-INP	Trigger guide, steel-nickel plated
22	6591-SS	Spring stud, stainless steel
23	6589-IZP	Stop adj nut, steel-zinc plated
24	6594-SS	Spring for Stop adj nut, stainless steel
25	6588-IZP	Spring screw, steel-zinc plated
26	6592-302SS	Spring guide washer, type 302 stainless steel
27	6593-1-SS	Main spring, stainless steel (For #43L-)
28	6593-2-SS	Main spring, stainless steel (For #43H-)
29	14477-1-AL	Handle body, aluminum
30	7623-IZP	Rivet, steel-zinc plated (2 Req'd)
31	6509-INP	Trigger, steel-nickel plated
32	6510-INP	Trigger stop, steel-nickel plated
33	11757-INP	Screw, steel-nickel plated
34	13798-INP	Trigger Guard, steel-nickel plated
35	Gunjet No. 43L- Brass, complete, for pressures up to 200 PSI	
36	Gunjet No. 43L-AL- Aluminum, complete, for pressures up to 200 PSI	
37	Gunjet No. 43H- Brass, complete, for pressures from 200 to 800 PSI	
38	Gunjet No. 43H-AL- Aluminum, complete, for pressures from 200 to 800 PSI	
39	AB43-KIT Spare Parts Kit (Includes all items marked with *)	
40	AB43-AL-KIT Spare Parts Kit (Includes all items marked with *)	
41	ABCK43-KIT (Conversion kit for Adj. stem) - items 8, 13 & 15	
42	ABCK43-AL-KIT (Conversion Kit for Adj. Stem) - Items 8, 13 & 15	



\*\*Specify Orifice Disk Size



ITEM	PART NO.	DESCRIPTION
1	CP36301-NY	HANDLE, NYLON (GRAY)
2	CP36308-SS	GROOVE PIN, TYPE 303 STAINLESS STEEL
3	CP36302-PP	BODY INSERT, POLYPROPYLENE (BLACK)
4	CP7717-2/108-VI	O-RING, VITON
5	CP36307-PPB	WASHER, POLYPROPYLENE (BLACK) 2 REQ'D
6	CP7717-2/209-VI	O-RING, VITON
7	CP36306-302SS	SPRING, TYPE 302 STAINLESS STEEL
8	CP36304-SS	STEM, TYPE 303 STAINLESS STEEL
9	CP38726-VI	SHUT-OFF WASHER, VITON
10	CP38725-SS	PHILLIPS HEAD SCREW, TYPE 302 STAINLESS STEEL
11	CP36303-PP	BODY (NPT), POLYPROPYLENE (BLACK) (FOR MODEL AA6B)
	CPB36303-PP	BODY (BSPT), POLYPROPYLENE (BLACK) (FOR MODEL AAB6B)
12	CP36309-302SS	RETAINING CLIP, TYPE 302 STAINLESS STEEL
	8400-1/4-PPB	PIPE PLUG (NPT), POLYPROPYLENE (BLACK) (FOR MODEL AA6B)
13	B8400-1/4-PPB	PIPE PLUG (BSPT), POLYPROPYLENE (BLACK) (FOR MODEL AAB6B)
No. AA6B DIRECTOVALVE MANUAL CONTROL VALVE (NPT THREADS)		
No. AAB6B DIRECTOVALVE MANUAL CONTROL VALVE (BSPT THREADS)		
PK-AB6B-KIT SPARE PARTS KIT (INCLUDES ALL ITEMS MARKED WITH *)		

13  
 PIPE PLUG  
 (SUPPLIED LOOSE  
 WITH UNIT)

DESCRIPTION:  
 AA(B)6B  
 DIRECTOVALVE®  
 MANUAL CONTROL VALVE  
 (NPT & BSPT VERSIONS)

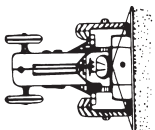
**Spraying Systems Co.**  
 Spray Nozzles and Accessories  
 P.O. Box 7900 • Wheaton, IL 60189-7900

Parts List No.  
**PL 68**

Rev. No. 1  
 Ref.

SHEET OF

**30 & 50 GALLON  
PULL TYPE SPRAYER  
2 WHEEL OR 3 WHEEL**



**van's**

**EQUIPMENT COMPANY**

P.O. BOX 3157 • 2169 SYLVESTER HIGHWAY • MOULTRIE, GEORGIA 31776-3157

*We Appreciate You and Your Business!*

(229) 985-1101