

OWNERS MANUAL

POULTRY HOUSE SPRAYER

Since VAN'S EQUIPMENT'S beginnings we have used a generic owners manual. It was just too costly to have printed and keep on hand owner manuals specific to each size and type sprayer we manufacture.

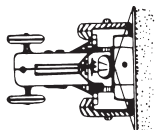
We now have the technology in house to create sprayer specific manuals and to print them only as needed. We think we have made a good beginning, but these manuals are still in the development stage. At this point we would appreciate the input of our end user customer and our dealers as to how we can make these manuals more useful and user friendly.

This is the prototype manual. Please look over the manual and give us your input.

CALL VANS EQUIPMENT AT 1-800-765-1101 AND ASK FOR CRAIG

We appreciate your input on these manuals.

Thanks Vans Equipment



van's

EQUIPMENT COMPANY

P.O. BOX 3157 • 2169 SYLVESTER HIGHWAY • MOULTRIE, GEORGIA 31776-3157

We Appreciate You and Your Business!

(229) 985-1101

**VAN'S EQUIPMENT
BUILT FOR FARMING INTEGRITY**

WHEN SELECTING EQUIPMENT FOR FARMING THE NAME VAN'S means availability, reliability, and proven superiority. Maintaining a close association with farming customers has resulted in equipment design and manufacturing philosophy that reflects the exacting requirements of our customers.

Van's Equipment Company, Inc. appreciates your purchase of a new spray unit. This unit, is designed to give years of service with proper care. The following pages will be helpful in set-up and maintenance of your new unit.

PLEASE READ THIS MANUAL CAREFULLY BEFORE INITIAL START-UP IS ATTEMPTED.

**WE APPRECIATE YOU
AND YOUR BUSINESS**

INDEX

PAGE NO.....	DESCRIPTION
1-2.....	Safety and Operation
3.....	Trouble Shooting
4.....	Model Overview and Description
5.....	Main Breakdown
6.....	Plumbing Breakdown
7-8.....	Main and Plumbing Breakdown Parts List
9-10.....	BETA-150 Breakdown
11-12.....	OMEGA-140 Breakdown
13.....	Control Unit Breakdown
14.....	Hannay Reel Breakdown
15.....	Hannay Reel Parts List
16.....	Reelcraft Reel Breakdown
17.....	Reelcraft Parts List
18.....	Gun Breakdown

CAUTIONS AND SAFETY

- A. Never allow anyone to ride sprayer while in operation.
- B. Be sure all driveline shields are in place and drive shaft is securely attached at both ends and shaft turns freely.
- C. NEVER SHUT RETURN LINE COMPLETELY OFF.
- D. Hitch only to recommended hitch points.
- E. Do not exceed pump Maximum RPM of 540.
- F. Never run pump dry.
- G. Check lug and hitch bolts before transporting.
- H. When Transporting always check that adjustable items are secure . Use lights or other warning devices to warn other vehicles.
- I. Always shut tractor off before attaching drive shaft.
- J. Check agitation frequently.
- K. Always have tank half full before adding chemical.
- L. Always adjust regulator while pump is running and never exceed capacity of gauge.
- M. Always use clean water and check strainer daily.
- N. Thoroughly clean sprayer after each use.

BEFORE RUNNING PUMP

- A. Be sure oil is half way up sight tube. If needed fill with 20w-30w NON DETERGENT oil.
- B. Be sure there are no suction line restrictions.
- C. Check that all clamps are tight.
- D. All VAN,S sprayers with diaphragm pump come with 20 MESH screens in the strainer. Be sure when replacing the screen to use 20 MESH.
- E. Pulsation damper should be charged to 20 percent of operating pressure,(min 5 psi). There is a valve stem like on a tire on the damper head for this purpose.
- F. Run pump at 0 pressure for 1 minute to remove air from system.
- G. Donot exceed recommended pump speed and pressure.
- H. Do not restrict pump on suction side.VAN'S recommends wire coil hose on suction lines.
- I. Change oil every 200 hours or at end of season.To drain oil from pump,remove the drain plug,(see manufactures manual or see breakdown in this manual), slowly turn shaft until all oil is drained.To fill pump with oil,slowly pour oil into sight tube while turning shaft.Turning shaft purges air from crankcase. REQUIRES 87 oz. OF OIL.

SETUP AND USE

- A. Before every use inspect for damage.
- B. Look in tank to make sure its clean.
- C. Attach hitch to draw bar.Sprayer hitch has some adjustment to help level unit.
- D. Add about 50 Gallons of clean water,(no chemicals at this time.
- E. Open ball vale in suction line and adgitator line and check for leaks.
- F. Start pum and check for leaks throughout system.

- G. Always leave bypass line open during operation of pump. NEVER shut bypass completely off, This can cause serious injury or death and damage pump. Again NEVER shut pressure regulator completely off.
- H. The hand gun has an inline shut off ball valve at pump to shut off flow to gun. The trigger on gun can be used for intermittent use. The front handle on gun barrel is used to adjust spray pattern.
- I. The tips and boomless nozzle have individual shut offs on the manifold on rear of sprayer.
- J. The tips can be adjusted up and down and side to side. The boomless nozzle can be rotated 180 degrees the spray either floor or ceiling.

CLEANUP AND STORAGE

- A. Clean thoroughly, remove all chemical residues from tank, pump strainer, and tips. Flush entire system with clean water, followed by a solution of 1 quart household ammonia to 25 gallons of water.
- B. Clean all tips, nozzles, including gun tip with soft brush. NEVER use metal object to clean tips.
- C. Inspect tips for wear.
- D. Drain tank completely and leave outside to dry. Be sure all residue has been removed.
- E. For long term or off season storage, do all of above then add a few gallons of antifreeze and run at low pressure until liquid come out all tips then immediately shut off pump. This will fill system with antifreeze.
- F. Store in dry place out of weather. Keeping sprayer out of sunlight will lessen UV effects on tank.
- G. Never change from one chemical to another without thoroughly cleaning sprayer.

PROBLEM	PROBABLE CAUSE	POSSIBLE REMEDY
Erratic pressure indication on pressure gauge	air leaking into suction line	Tighten all fittings and hoses between pump and tank
	Trash in control valve or pressure gauge	Remove and clean parts
	Suction line kinked or clogged	Remove suction line and clean-check tank and strainer
	Air leak in suction hose	Replace hose
Pressure gauge fluctuates excessively	Suction hose collapsed	Replace hose
	Pump is sucking in air through the suction line or air has not been entirely evacuated from strainer	Examine the suction hose and make sure it is firmly secured. Run the pump with outlet hose open to evacuate air from pump
Pump loses suction	Suction strainer clogged	Clean strainer and tank
	Air leak in suction hose	Replace hose
	Suction hose collapsed	Replace hose
	Pump air locked	Remove discharge line and pump liquid through pump
	Pump worn and clearances too great	Replace or repair pump
Pump does not draw water	Seals worn out or deteriorated	Replace pump seals
	One or more valves are seated improperly	Examine the valve seatings and clean them
	Suction line is plugged or collapsed clogged strainer	Examine suction line Clean strained
Noisy pump	Excessive pump speed	Slow the pump
	Air leak in suction line	Replace suction hose
	Partially clogged strainer	Clean strainer
Pump shows decreased capacity	Suction strainer clogged	Clean strainer
	Air leak in suction hose	Replace suction hose
	Moving parts worn	Replace worn parts
	Worn seal	Replace seal
	Pump roller stuck	Clean pump inside
	Pump operating too slow	Speed up pump
	Nozzles too large for capacity of pump	Use smaller nozzles or reduce number of nozzles on boom
Pump leaks	Worn out seal	Replace seal

POULTRY HOUSE SPRAYER

500 GALLON

HEAVY DUTY



MODEL NO. T50010	STANDARD
MODEL No. T50016	ECONOMY

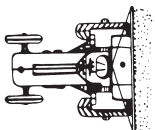
The Van's Poultry House Sprayer is another proven work horse from the Van's Stable. This machine takes most of the work out of Broiler Production. It will save you many hours labor in washing down and cleaning your houses between grow outs. Four stainless steel high pressure nozzles mounted on the right rear of the machine on adjustable brackets supplied by a high volume, 700 PSI Diaphragm Pump, allows you to clean each side curtain with a single pass. The ceiling can be done easily with the center mounted boomless nozzle. By simply inverting this same nozzle, you can make an additional pass to disinfect the floor. To complete the job, we have included a hand gun & 50 feet of hose on an auto rewind hose for washing down tight corners, fans & even feed tanks. You will also find this attachment handy in cleaning other farm equipment & maybe even spraying insect control on cattle.

CAUTION: Chemicals can be dangerous. Always follow instructions on the chemical container label. Improper selection or use of chemicals can cause serious injury to humans and the environment. Be Safe. Select the right chemical and handle it with care.

Standard Features Include:

- | | |
|---|---|
| 1) 500 Gallon Low Profile Polyethylene Tank | 6) Auto Rewind Hose Reel |
| 2) Udor Beta 150 Diaphragm Pump
700 PSI - 40 GPM | 7) Quick Fill Attachment |
| 3) Four Stainless Steel Side Mounted Tips | 8) Heavy Duty Trailer w/5 Year
Structural Warranty |
| 4) Center Mounted Swivel Spray Nozzle | 9) New 11L-15 Rib Implement Tires |
| 5) High Pressure Hand Gun, 50 Feet Hoses | 10) Fully Assembled and Factory Tested |

(PRICES SUBJECT TO CHANGE WITHOUT NOTICE)



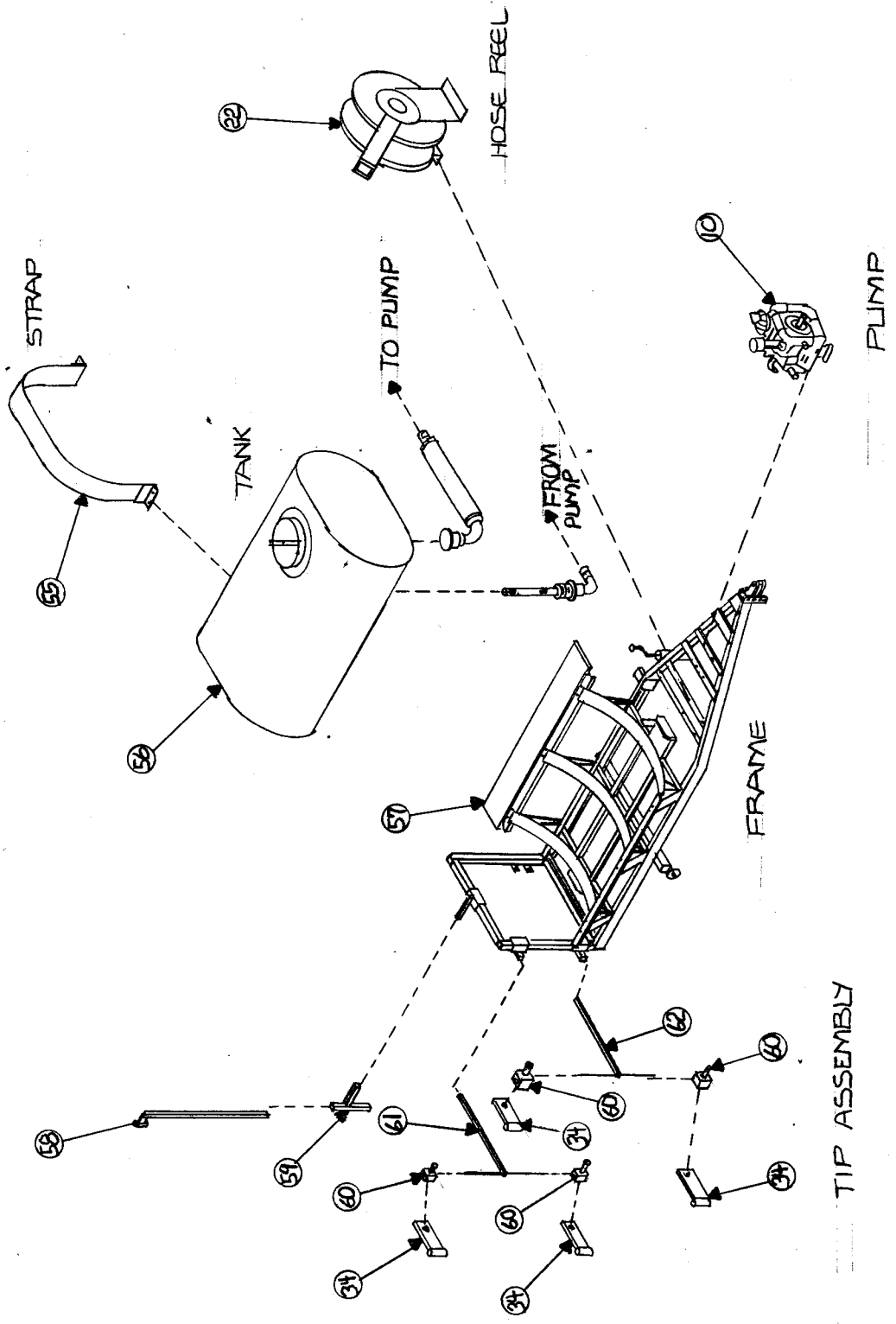
van's

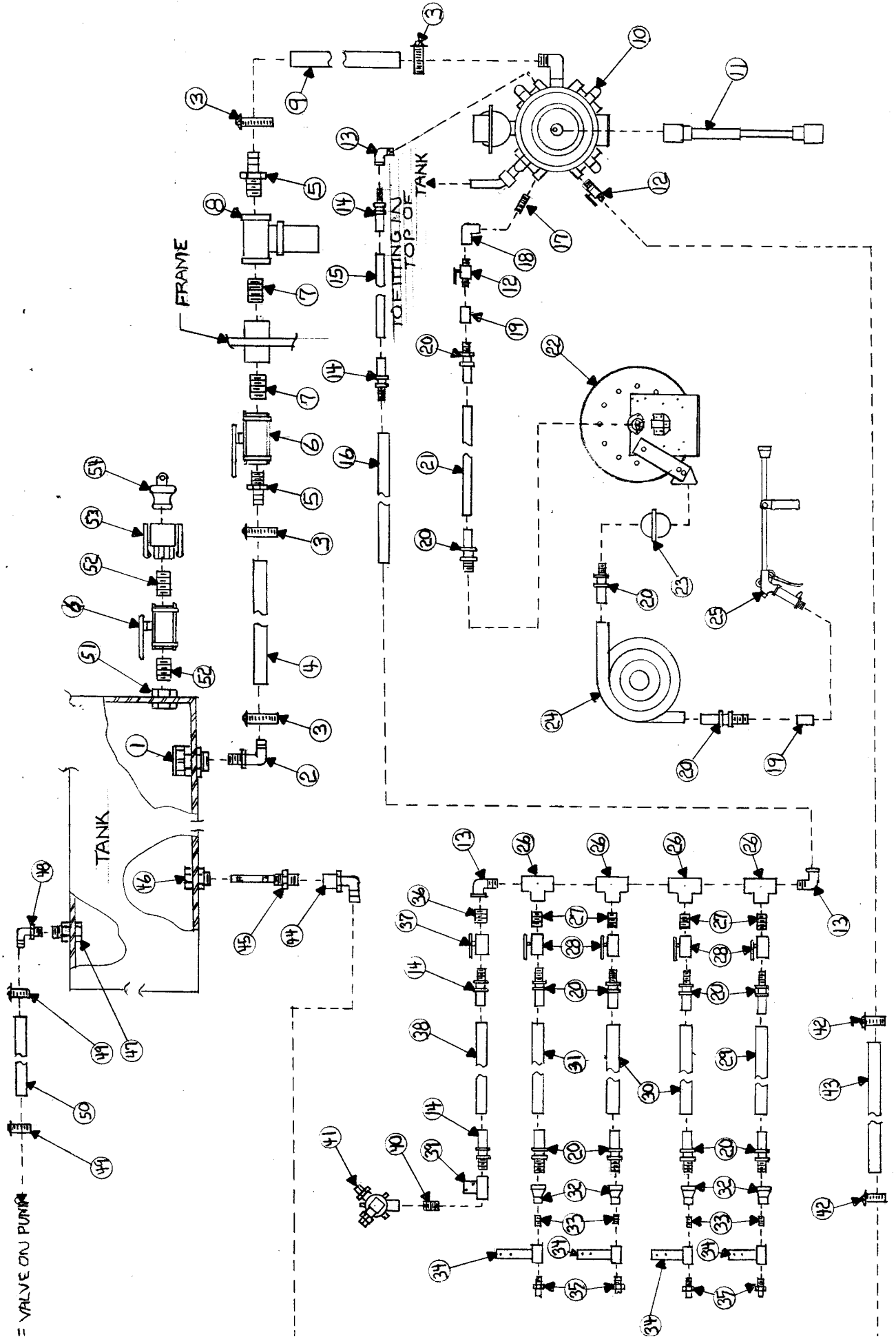
EQUIPMENT COMPANY

P.O. BOX 3157 • 2169 SYLVESTER HIGHWAY • MOULTRIE, GEORGIA 31776-3157

We Appreciate You and Your Business!

(229) 985-1101





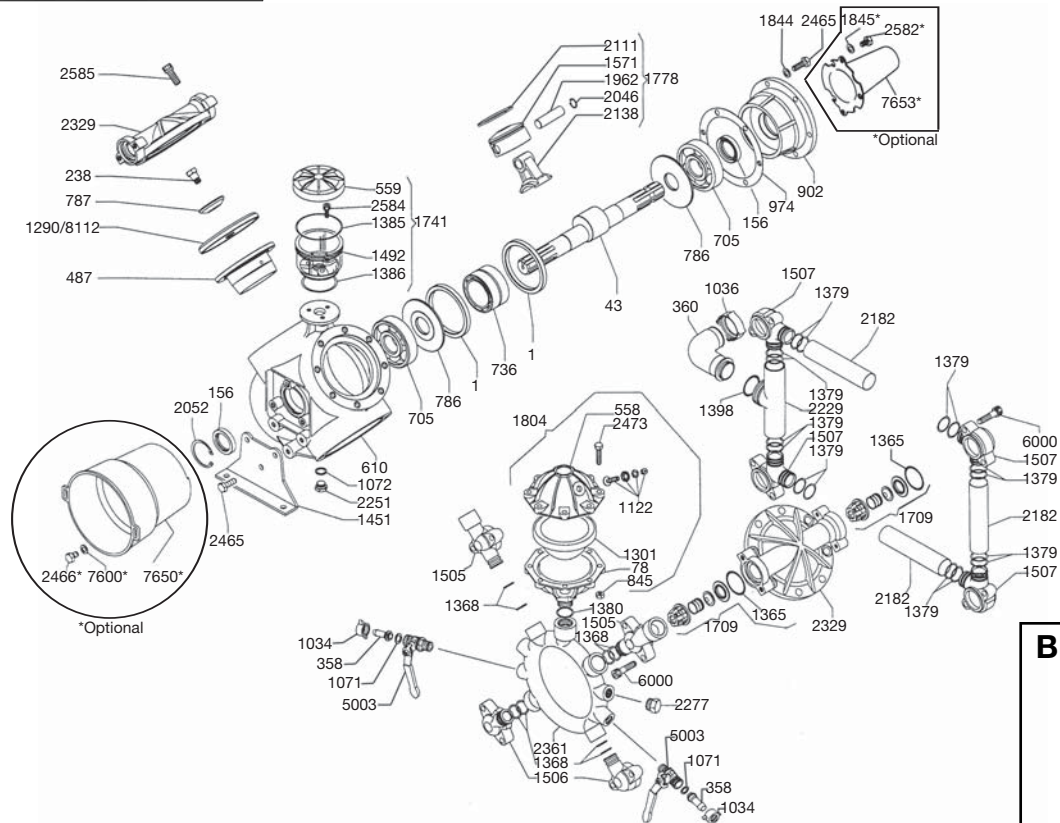
ITEM NO.	DESCRIPTION	PART NO.
1	Tank Fitting 1 1/4" Anti-Vortex	63065
2	Elbow 1 1/4"MPT x 1 1/2" Barb 90 Nylon	EL114112
3	Hose Clamp 1 1/2"	28H
4	Hose Wire Coil 1 1/2"	12003501
5	Hose Shank 1 1/2"MPT xBarb Nylon	A112
6	Ball Valve FPT 1 1/2" Poly	V-150
7	Nipple 1 1/2" x Close Galvanized	GN1121.75
8	Strainer 1 1/2" FPT 20 Mesh	3350-0112
9	Hose Wire Coil 1 1/2"	12003501
10	Pump 4 Diaphragm	BETA-150
11	Drive Shaft	7105061NN007007
12	Ball Valve	Call
13	Street Elbow 3/4" Galvanized	GSE3490
14	Hydraulic Fitting 3/4"MPT Swivel	HU1212MC
15	Hose 800 PSI 3/4" (10'-6")	34-Y-800
15A	Hose Assembly ,(Items 14 & 15)	Call
16	Hose Radial Flex 1"	RF-100
17	Nipple 3/8" x 2" Galvanized	GN382
18	Elbow 3/8"FPT x 90 Galvanized	GEL3890
19	Coupling 1/2" Galvanized	GCP1200
20	Hydraulic Fitting 1/2"MPT Swivel	HU0808MC
21	Hose 800 PSI 1/2" (5')	12-Y-800
21A	Hose Assembly ,(Items 20 & 21)	Call
22	Hose Reel ,(Standard)	N716-23-24J-VR
22A	Hose Reel ,(Economy)	7800-OMP
23	Hose Bumper	2-HR1005
24	Hose 800 PSI 1/2" ,(50')	12-Y-800
24A	Hose Assembly,(Items 20 & 24)	Call
25	Spray Gun,(Standard)	13.901.151
25A	Spray Gun,(Economy)	7.901.103
26	Tee 3/4" x 3/4" x 1/2" FPT Galvanized	GT343412
27	Nipple 1/2"x 1" Galvanized	GN121
28	Ball Valve 1/2" Brass	12BBV
29	Hose 800 PSI 1/2" ,(5'-10")	12-Y-800
29A	Hose Assembly,(Items 20 & 29)	Call
30	Hose 800 Psi,(5'-8")	12-Y-800
30A	Hose Assembly,(Items 20 & 30)	Call
31	Hose 800 PSI 1/2" ,(7'-4")	12-Y-800
31A	Hose Assembly,(Items 20 & 31)	Call
32	Bell Reducer 1/2" x 1/4" Galvanized	GBR1214
33	Nipple 1/4" x 1" Galvanized	GN141
34	Tip Mounting Bracket	I94-013
35	Tip ,(4 Required)	H1/4U-SS5015
36	Nipple 3/4"x Close Galvanized	GN341.5
37	Ball Valve 3/4" Brass	34BBV
38	Hose 800 PSI,(9'-6")	34-Y-800

38A	Hose Assembly,(Items 14 & 38)	Call
39	Nozzle Bracket	I94-024
40	Nipple 3/4"x Close Galvanized	GN341.5
41	Boomless Nozzle	4418-3/4-2TOC40
42	Hose Clamp 1/2"	8H
43	Hose Red Ag,1/2"	3204-0410
44	Elbow 3/4" FPT x 1/2" Barb 90 Nylon	EL3412F
45	Jet Agitator	3371-0019
46	Tank Fitting 3/4"	60401
47	Tank Fitting 1"	67159
48	Elbow 1"MPT x Barb 90 Nylon	EL100
49	Hose Clamp 1"	20H
50	Hose Red Ag,1"	3204-0425
51	Tank Fitting 1 1/2"	60124
52	Nipple 1 1/2" x Close Galvanized	GN1121.75
53	Cam Lock 1 1/2" Coupler x FPT	150-D
54	Cam Lock 1 1/2" Plug	150-PL
55	Strap	SP81
56	500 Oval Tank	47346
57	Trailer Frame, Poultry House Sprayer	T5CH
58	Boomless Nozzle Upright	I94-023
59	Boomless Nozzle Upright Bracket	I94-020
60	Tip Bracket Mount	I94-014
61	Adjustable Tip Mount Bracket,(Top)	I94-017
62	Adjustable Tip Mount Bracket,(Bottom)	I94-016



BETA-150/CC

Exploded View Diagram and Parts List



BETA-150/CC PUMP
Requires 87 oz.
UDOT LUBE,
or SAE 30W
Non-detergent Oil

REF#	PART#	DESCRIPTION	QTY	REF#	PART#	DESCRIPTION	QTY
1	0001.01	Retainer ring	2	1505	1203.45	Discharge Elbow, 3/4" F	2
43	0002.29	Crank Shaft	1	1506	1203.46	Discharge Elbow	2
78	0003.10	Accumulator Body	1	1507	1203.54	Suction Elbow	4
156	0007.02	Crank Shaft Seal	2	1571	1205.08	Piston	4
238	0102.03	Diaphragm Bolt	4	1709	6006.08	Valve Assembly	8
358	0202.19	1/2" Barb	2	1741	6033.02	Oil Reservoir Kit	1
360	0202.84	Suction Hose Barb	1	1778	6015.01	Piston & Rod Assembly	4
487	0206.12	Piston Sleeve	4	1804	6031.02	Accumulator Assembly	1
558	0208.21	Accumulator Head	1	1844	1403.09	Washer	4
559	0208.22	Oil Reservoir Cap	1	*1845	1403.10	Washer	3
610	0209.17	Pump Body	1	1962	1502.01	Connecting Rod Pin	4
705	0214.11	Ball Bearing	2	2046	1506.02	Snap Ring	8
736	0216.02	Needle Bearing	1	2052	1506.16	Snap Ring	1
786	0301.02	Washer	2	2111	1509.05	Piston Ring	4
787	0301.03	Retainer Washer	4	2138	1519.03	Connecting Rod	4
845	0303.01	Nut	8	2182	1601.27	Suction Tube	3
902	0501.46	Flange	1	2229	1602.30	Suction Tube	1
974	0602.01	Gasket	1	2251	1603.02	Oil Plug	1
1034	0604.09	Barb Nut	2	2277	1603.34	Plug	1
1036	0604.48	Suction Nut	1	2329	1604.54	Head	4
1071	0605.05	Rubber Gasket	2	2361	1605.22	Discharge Manifold	1
1072	0605.09	Aluminum Gasket	1	2465	1804.03	Bolt	10
1122	0608.16	Air Valve Assembly	1	*2466	1804.06	Bolt	3
1290	0903.01	Diaphragm (BUNA-N, Optional)	4	2473	1804.54	Bolt	8
**1301	0903.16	Accumulator Diaphragm	1	*2582	1805.04	bolt	3
**1365	1101.01	O-Ring	8	2584	1805.06	Bolt	3
1368	1101.04	O-Ring	8	2585	1805.08	Bolt	32
1379	1101.31	O-Ring	16	5003	0608.46	Ball Valve (Right)	2
1380	1101.27	O-Ring	1	6000	1805.07	Bolt	16
1385	1101.32	O-Ring	1	*7600	1403.36	Washer	3
1386	1101.33	O-Ring	1	*7650	1219.02	PTO Safety Shield (optional)	1
1398	1101.42	O-Ring	1	*7653	1219.15	Shaft Protector Thru Shaft (optional)	1
1451	1202.14	Base Plate	2	*8112	0903.33	Diaphragm (DESMOPAN, Standard)	4
1492	1203.30	Oil Reservoir	1				

* Parts Included in Diaphragm Repair Kit - #8700.07. (Also available in BUNA-N - #8700.18.)



BETA-150/CC

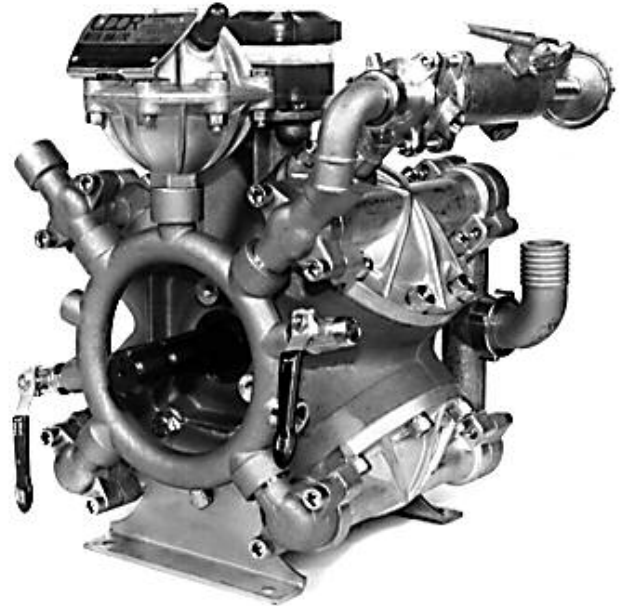
High Pressure Diaphragm Pump

BETA-150/CC high pressure, high volume diaphragm pumps are excellent for various horticultural and agricultural spraying applications. Simplicity of design and common parts allow easy and affordable maintenance. Control valve, pulsation dampener and pressure gauge are standard.

The BETA-150/CC is constructed of aluminum, brass and stainless steel with brass and stainless steel liquid handling parts.

For industrial uses and spraying applications not listed, please consult UDOR U.S.A. For all PTO drive app. safety shield part # 1219.02 is recommended.

Splined Q-2 bushing for pulley drive is available upon request. For thru shaft protection part # 1219.15 is recommended.



SPECIFICATIONS

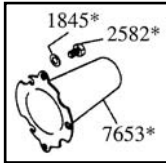
Maximum Flow	42 GPM
Maximum Pressure.....	700 PSI
Maximum RPM	540 RPM
Maximum Temperature	140°F
Inlet Port Hose Barb	1-1/2"
Outlet Ports	
Hose Barb (Ball Valve Controlled)	1/2" (2)
FNPT	3/4"
MNPT	3/4"
Bypass Hose Barb.....	1"
Dimensions.....	L-21.9" x W-15" x H-16.5"
Weight	130 lbs.
Diaphragm Material	
Standard.....	DESMOPAN
Optional	BUNA-N

NOTE - Protect pumps from freezing. If freezing conditions exist, flush pump and system with a 50/50 mixture of antifreeze and water.



OMEGA-140/CC

Exploded View Diagram and Parts List



*Optional
Thru-Shaft
Protector

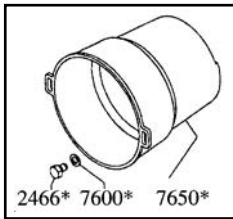
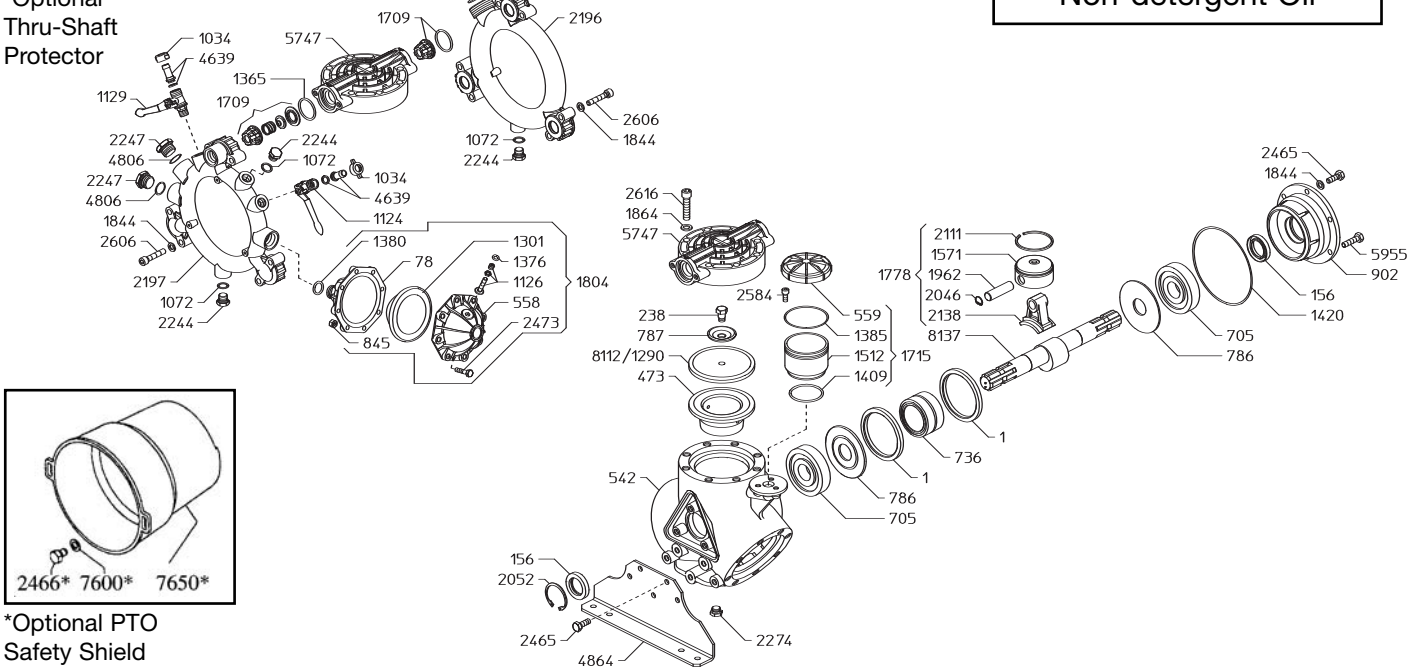
OMEGA-140/CC PUMP

Requires **87 oz.**

UDOR LUBE,

or SAE 30W

Non-detergent Oil



*Optional PTO
Safety Shield

REF#	PART#	DESCRIPTION	QTY	REF#	PART#	DESCRIPTION	QTY
1	0001.01	Retainer Rings	2	1715	6033.02	Oil Reservoir Assy.	1
78	0003.12	Lower Accumulator	1	1778	6015.01	Piston/Rod Assy.	3
156	0007.02	Shaft Seal	2	1804	6031.02	Accumulator	1
238	0102.03	Diaphragm Bolt	3	1844	1403.09	Washer	16
370	0202.72	Suction Elbow	1	*1845	1403.10	Washer	3
473	0206.49	Piston Sleeve	3	1864	1403.45	Washer	24
558	0208.21	Upper Accumulator	1	1962	1502.01	Wrist Pin	3
542	0209.91	Pump Body	1	2046	1506.02	Snap Ring	6
559	0208.22	Oil Cap	1	2052	1506.16	Snap Ring	1
705	0214.11	Ball Bearing	2	2111	1509.05	Piston Ring	3
736	0216.02	Needle Bearing	1	2138	1519.03	Connecting Rod	3
786	0301.02	Spacer	2	2196	1601.28	Suction Manifold	1
787	0301.03	Diaphragm Washer	3	2197	1605.32	Discharge Manifold	1
845	0303.01	Nut	8	2244	1603.64	Plug	2
902	0501.46	Bearing Flange	1	2247	1603.74	Plug	2
1034	0604.09	Barb Nut	2	2465	1804.03	Bolt	8
1055	0604.50	Suction Nut	1	*2466	1804.06	Bolt	3
1072	0605.09	Gasket	2	2274	1603.44	Drain Plug	1
1124	0608.45	Ball Valve Right	1	*2582	1805.04	Bolt	3
1126	0608.16	Air Valve Assy.	1	2584	1805.06	Bolt	3
1129	0608.46	Ball Valve Left	1	2606	1805.29	Manifold Bolt	12
1290	0903.01	Piston Diaphragm BUNA optional	3	2616	1805.38	Head Bolt	24
**1301	0903.16	Accumulator Diaphragm	1	4639	0202.19	Discharge Barb	2
**1365	1101.01	O-Ring	6	4806	1101.G3	O-Ring	2
1376	1101.16	O-Ring	1	4864	1202.82	Pump Rail	2
1380	1101.25	O-Ring	1	5747	1604.B7	Pump Head	3
1385	1101.32	O-Ring	1	5955	1804.23	Bolt	2
1398	1101.42	O-Ring	1	*7600	1403.36	Washer	3
1409	1101.68	O-Ring	1	*7650	1219.02	PTO Safety Shield *optional	1
1420	1101.71	O-Ring	1	*7653	1219.15	Shaft Protector Thru Shaft *optional	1
1512	1203.30	Oil Reservoir	1	**8112	0903.33	Diaphragm DESMOPAN Standard	3
1571	1205.08	Piston	3	8137	0002.A6	Crankshaft	1
1709	6006.08	Valve Assy.	6				

* Parts Included in Diaphragm Repair Kit - #8700.06. (Also available in BUNA-N - #8700.17.)



OMEGA-140/CC

High Pressure Diaphragm Pump

OMEGA-140/CC 3-cylinder high pressure, high volume diaphragm pumps are excellent for various horticultural and agricultural spraying applications. Simplicity of design and common parts allow easy and affordable maintenance. Control valve, pulsation dampener and pressure gauge are standard.

The OMEGA-140/CC is constructed of plasticized aluminum, brass and stainless steel with plasticized aluminum, brass and stainless steel liquid handling parts.

For industrial uses and spraying applications not listed, please consult UDOR U.S.A. For all PTO drive applications safety shield part #1219.02 is recommended.

Splined Q-2 bushing for pulley drive is available upon request. For thru shaft protection part #1219.15 is recommended.



SPECIFICATIONS

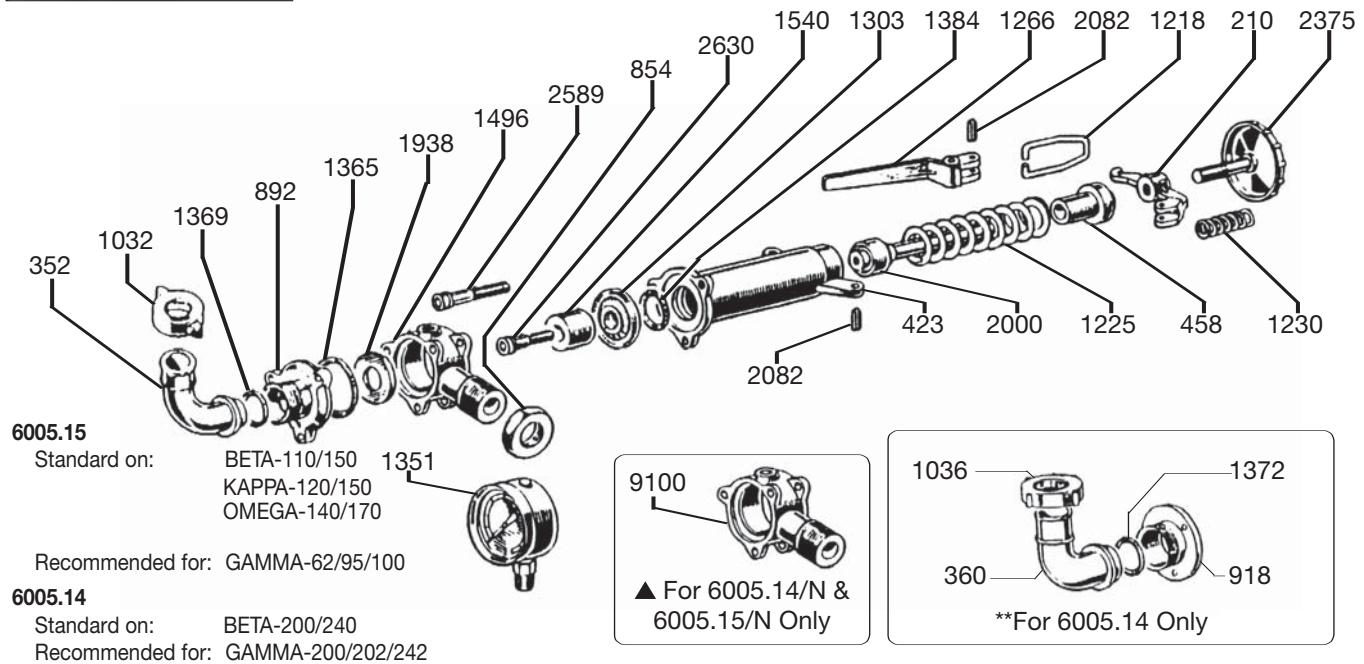
Maximum Flow	36 GPM
Maximum Pressure.....	700 PSI
Maximum Pump Speed.....	540 RPM
Maximum Temperature.....	140° F
Inlet Port Hose Barb.....	1-1/2"
Outlet Ports	
Hose Barb (Ball Valve Controlled).....	1/2" (2)
FNPT	3/4" (2)
Bypass Hose Barb.....	1"
Dimensions	L-19.5" x W-15" x H-22"
Weight	100 lbs.
Diaphragm Material	
Standard.....	DESMOPAN
Optional	BUNA-N

NOTE - Protect pumps from freezing. If freezing conditions exist, flush pump and system with a 50/50 mixture of antifreeze and water.



6005.15 & 6005.14 Control Unit

Operating Instructions and Parts List



REF#	PART#	DESCRIPTION	QTY	REF#	PART#	DESCRIPTION	QTY
210	0101.01	Lever Guide	1	*1303	0903.25	R.V. Diaphragm	1
352	0202.04	1" Brass Elbow Hose Barb	1	1351	GG1500	Pressure Gauge (Optional)	1
**360	0202.92	1-1/4" Brass Elbow Hose Barb (6005.14)	1	*1365	1101.01	O-Ring	1
423	0204.31	Valve Body	1	1369	1101.05	O-Ring	1
458	0205.09	Valve Cylinder	1	**1372	1101.08	O-Ring (6005.14)	1
854	0303.41	Nut	1	*1384	1101.31	O-Ring	1
892	0501.12	Flange	1	1496	1203.35	R.V. Elbow	1
*918	0501.66	Flange (6005.14)	1	*1540	1204.13	Poppet	1
1032	0604.01	Barb Nut	1	*1938	1501.25	Seat	1
**1036	0604.13	Barb Nut (6005.14)	1	2000	1503.11	Regulator Stem	1
1218	0901.10	Pressure Bail	1	2082	1507.07	Pin	2
1225	0901.26	R.V. Spring	1	2375	1801.01	Adjustment Knob	1
1230	0901.05	R.V. Spring - Small	1	2589	1805.26	Bolt	3
1266	0902.01	R.V. Handle	1	*2630	1810.01	S.S. Bolt	1
				▲9100	1203.35/N	3/4" MNPT R.V. Elbow	1

* Parts Included in Repair Kit - #8701.03. ** Parts for 6005.14 Control Unit Only.

OPERATING INSTRUCTIONS

1. Before operating or re-operating pump, lift R.V. Handle (Ref. #1266) so pump will start at zero pressure. FAILURE TO DO SO WILL VOID PUMP WARRANTY.
2. Turn Pressure Adjustment Knob (Ref. #2375) counter-clockwise to relieve spring tension. (Step 2 is only necessary on initial start-up and is not necessary for daily operation.)
3. Start unit and let run until air is evacuated from system, when only liquid is expelled from the bypass line.
4. Return R.V. Handle (Ref. #1266) to down position. Open spray gun or spray boom and turn adjustment knob (Ref. #2375) clockwise until desired operating pressure is achieved.

PROTECT PUMP FROM FREEZING.

If freezing conditions exist, flush pump with a 50/50 mixture of antifreeze and water.

Hannay Reels

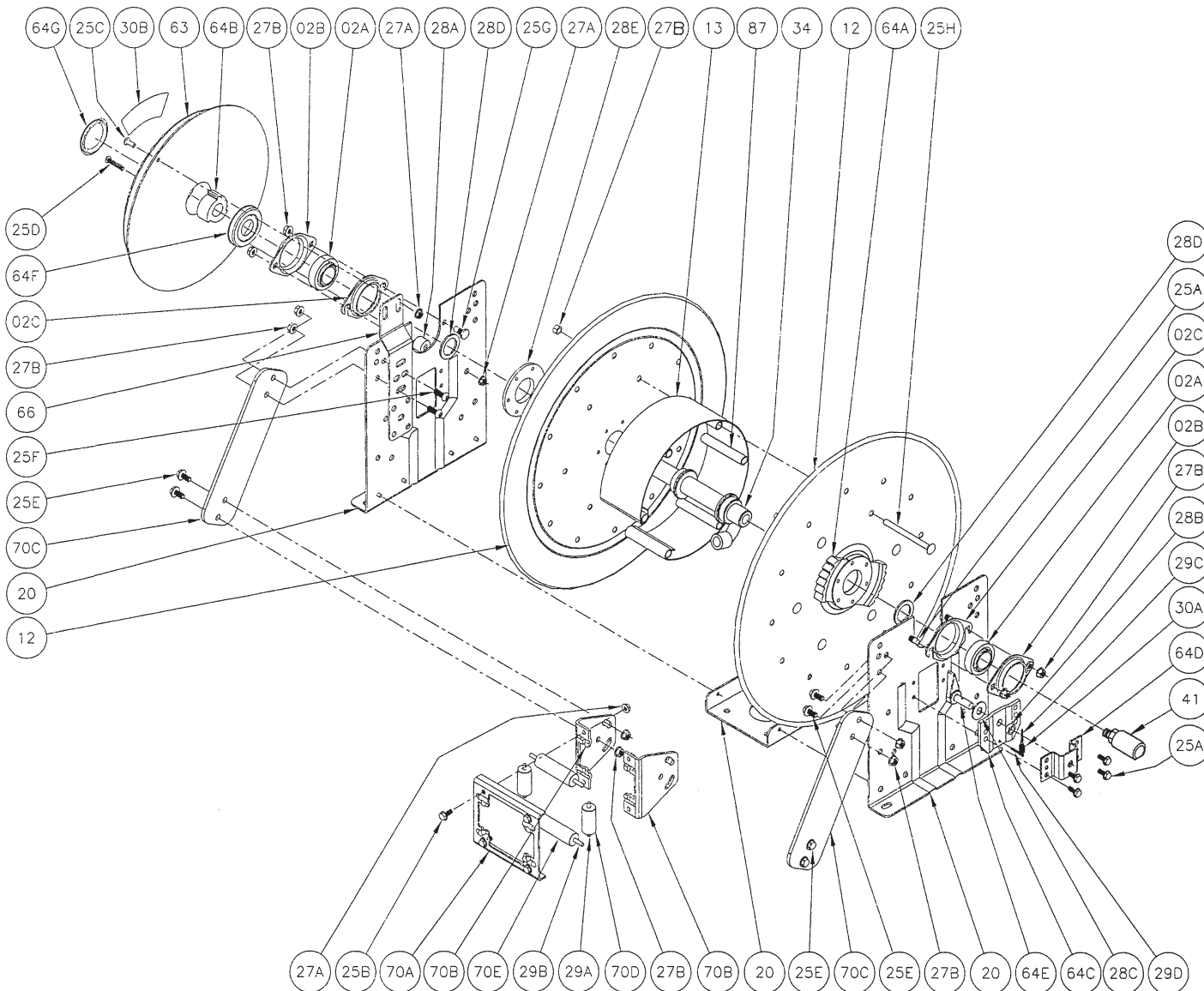
The reel leader.

Hannay Reels, Inc., 553 State Route 143
 Westerlo, NY 12193-0159
 Telephone 518-797-3791 • Toll Free 1-877-GO-REELS (467-3357)
 FAX 1-800-REELING (733-5464)
 INT'L FAX (518) 797-3259
 Website: www.hannay.com
 E-mail: reels@hannay.com

ISO 171

PARTS LIST

SSN-700 SERIES



**PARTS LIST
ISO 171
SSN-700 SERIES**

When ordering parts

**BE SURE TO SPECIFY COMPLETE MODEL NUMBER and SERIAL NUMBER OF REEL.
USE PART NUMBER!**

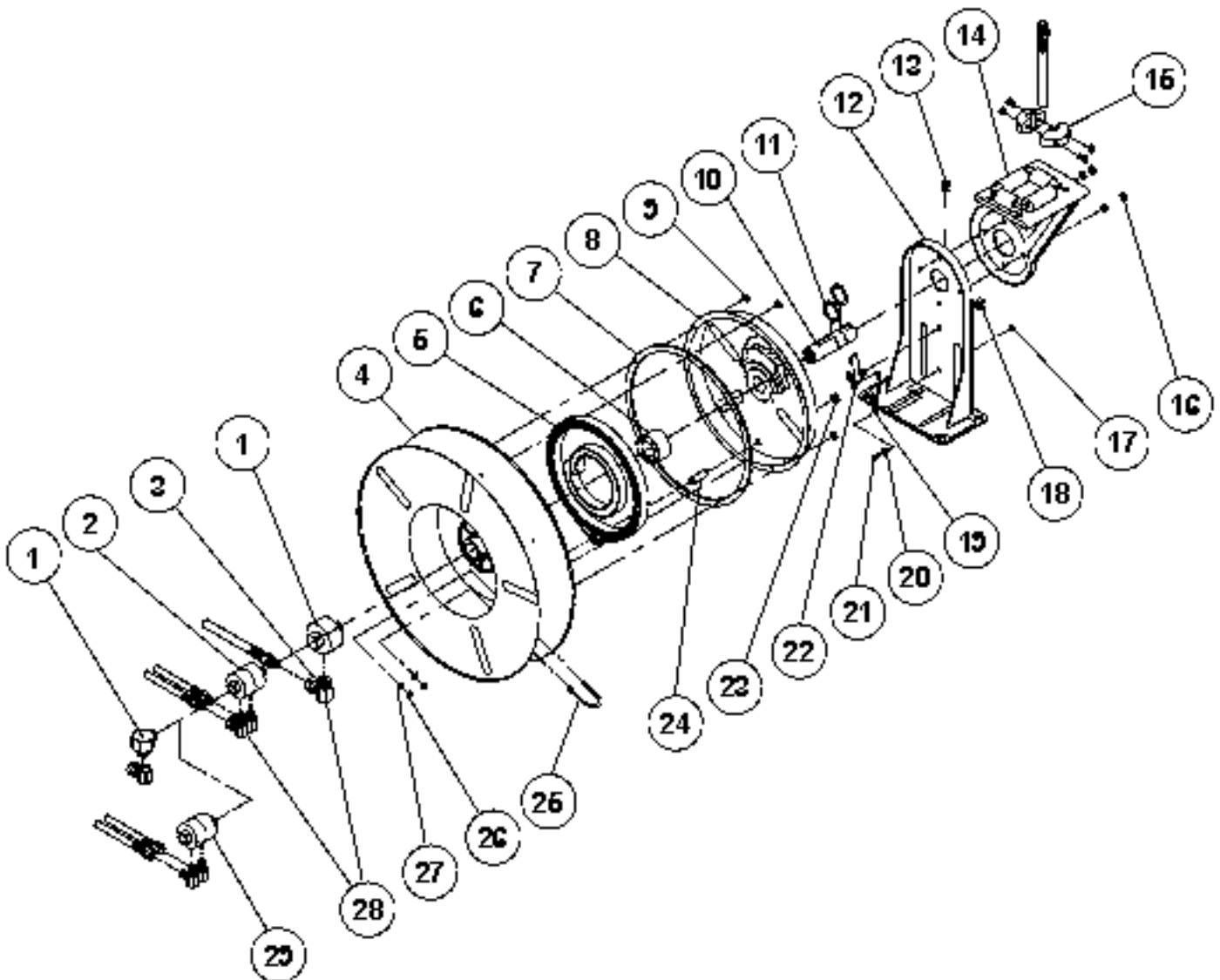
<u>Item No.</u>	<u>Description</u>	<u>PART NUMBER</u>	<u>Quantity</u>
02A	1" Self-Aligning Bearing Insert.....	9902.1503	2
02B	SST Self Aligning Bearing Holder.....	9902.2903	2
02C	SST Self Aligning Bearing Holder (Slotted for N Series).....	9902.2904	2
12	SST Disc, 16-17, 15-3/4" Dia(Specify Model & Front, Back)	9903.0424	1
12	SST Disc, 19-20, 18-3/4" Dia.(Specify Model & Front, Back)	9903.0824	1
12	SST Disc, 23-24, 22-3/4" Dia.(Specify Model & Front, Back)	9903.1124	1
12	SST Disc, 25-26, 24-3/4" Dia(Specify Model & Front, Back)	9903.1324	1
13	SST Drum, 10-1/2" Dia. - Wrap Around.....(Specify Model)	9905.1139	1
13	SST Drum, 15-1/2" Dia. - Wrap Around.....(Specify Model)	9905.1179	1
20	SST Frame Assembly	Specify Model	1
25A	5/16"-18 x 3/4" Long SST Hex Head Bolt.....	9940.0200	8
25B	5/16"-18 x 3/4" SST Flanged Bolt.....	9960.0002	4
25C	5/16"-18 x 1" SST Hex Socket Button Head Cap Screw.....	9960.0092	1
25D	5/16"-18 x 1-1/2" SST Hex Socket Button Head Cap Screw.....	9960.0003	1
25E	3/8"-16 x 3/4" SST Spinlock Bolt	9960.0009	6
25F	3/8"-16 x 1" LG SST Hex Socket Button Head Cap Screw.....	9960.0093	2
25H	3/8"-16 SST Carriage Bolt with Nut	Specify Model	As Needed
27A	5/16"-18 SST Lock Nut	9960.0090	8
27B	3/8"-16 SST Spinlock Nut	9960.0091	18
28A	SST Spring Mounting Spacer (C&J).....	9922.0034	1
28A	SST Spring Mounting Spacer (B, D & G)	9922.0039	2
28B	Spacer for Pawl & Pin for Ratchet Locking Assembly.....	9922.0022	1
28C	1/2" SST Flat Washer	9960.0095	1
28D	1" SST Hub Spacer Washer	9954.0070	As Needed
28E	SST Disc Washer.....	9965.0018	1
29A	1/4" Dia. SST Rod, 2-3/4" Long.....	9940.0190	2
29B	1/4" Dia. SST Rod.....	Specify Model	2
29C	1/8" x 1" SST Cotter Pin for Pawl & Pin	9922.0024	1
29D	3/16" x 1" SST Cotter Pin for N Series Ratchet.....	9922.0028	1
30A	Ratchet Locking Spring.....	9922.0008	1
30B	Spring Under Tension Caution Decal	9922.0010	1
34	1/2" FNPT Welded 304 SST Barstock Hub Assy.....(Specify Model)	9901.0634	1
41	1/2" 90° MxF SST Super Swivel Joint	9927.8535	1
63	B Spring with SST Case & Carbon Steel Spring.....(Specify Model)	9921.0037	1
63	C Spring with SST Case & Carbon Steel Spring.....(Specify Model)	9921.0041	1
63	D Spring with SST Case & Carbon Steel Spring.....(Specify Model)	9921.0060	1
63	G Spring with SST Case & Carbon Steel Spring	9921.0043	1
63	J Spring with SST Case & Carbon Steel Spring	9921.0039	1
64A	Ratchet Wheel	9922.0015	1
64B	Spring Arbor for D Spring	9922.0001	1
64B	Spring Arbor for B, C, G & J Spring.....	9922.0002	1
64C	SST Ratchet Pawl Housing, Inner (N Series).....	9922.0043	1
64D	SST Ratchet Pawl Housing, Outer (N Series).....	9922.0044	1
64E	Pawl & Pin	9922.0020	1
64F	Cap-Plug for Spring (Inner Side)	9922.0036	1
64G	Cap-Plug for Spring (Outer Side)	9922.0037	1
66	SST Spring Mounting Bracket (N Series).....	9922.0045	1
70A	Roller Bracket Frame.....	Specify Model	1
70B	SST N Series Roller Mounting Bracket	9940.0176	2
70C	SST N Series Roller Arm Only	9941.0130	2
70D	1" Dia. X 2" Long Roller for Stamped Housing.....	9940.0180	2
70E	1" Dia. Roller for Stamped Housing.....	Specify Model	2
87	3/8" Spacer Pipe.....(Specify Model)	9904.3200	As Needed



Wind Things Up With Reelcraft

The following parts should be removed from the reel to make it constant tension.

Part No.	Qty.	Description	
600018	1	Latch Pawl Ass'y	#22 on exploded view
260067	1	Latch Spring	#19 on exploded view
400012	1	Latch Bushing	#20 on exploded view
S82-15	1	Nyloc Nut	#17 on exploded view
S280-8	1	Hex Flange Nut	#18 on exploded view
S20-110	1	Set Screw	#21 on exploded view





Wind Things Up With Reelcraft

PARTS COMMON TO ALL PAINTED/STAINLESS REELS

ITEM NO.	PAINTED PART NO.	STAINLESS	NO REQ.	DESCRIPTION	ITEM NO.	PAINTED PART NO.	PAINTED STAINLESS	NO REQ.	DESCRIPTION	ITEM NO.	PAINTED PART NO.	PAINTED STAINLESS	NO REQ.	DESCRIPTION
4	260011	600063	1	Sheave Assembly	13	NONE	S47-66	1	3/8-16 x 1/2" Setscrew	22	S600018	S600069	1	Latch Pawl Ass'y
6	S600621	S600621	1	Spring Arbor Ass'y	14	S600017	S600068	1	Guide ARm w/rollers	23	S76-106	S74-106	1	3/8-24 Jam Nut
7	S260069	S260069	1	Gasket	16	300017	S73-5	4	5/16-18 Locknut	24	S260031	260256	1	Springcase stud
8	S260074	600065	1	Spring Case Ass'y	17	S82-15	S95-22	1	10-32 X 3/8" Nyloc Nut	26	300070	S96-13	4	1/4-20 x 3/8" Locknut
9	300011	260239	6	10-32 Hex Locknut	18	S280-8	S72-8	1	1/2-20 x 5/8" Hex Nut	27	300039	S108-4	4	1/4" Flat washer
11	300007	S147-26	2	1 1/4" Snap Ring	19	S260067	S260067	1	Latch Spring					
12	600016	600067	1	Base Assembly	20	S400012	S260225	1	Bushing					
13	S35-51	NONE	1	1/2-13 Setscrew	21	S20-110	S46-110	1	10-32 x 7/8" Screw					

PARTS COMMON TO STANDARD REELS (NON STAINLESS, TW OR TH)

ITEM NO.	DESCRIPTION	NO. REQ.	74XX OHP	76XX OLP	76XX OMP	76XX OHP	78XX OLP	78XX OMP	79XX OLP
1	Swivel Assembly	1	S600007	S600888	S602033	S600007	S600888-1	S602033	S602026
3	90° Ell	2	None	None	None	None	None	None	S157-5
5	Drive Spring Ass'y	1	S260053	*Note	S260053	S260053	S260037	S260053	S600023
10	Main Shaft	1	S260095	S260095	S260095	S260095	S260095	S260095	260095-1
15	Hose Bumper Ass'y	1	1-HR1004-3	1-HR1004-3	1-HR1004-3	1-HR1004-3	1-HR1004-3	2-HR1004-3	3-HR1004-3
25	U-bolt	2	2-117440	2-117440	2-117440	3-117440	2-117440	3-117440	5-117440
28	Swivel Union	1	S257-11	S257-26	S257-26	S257-11	S257-11	S257-26	None

PARTS COMMON TO (TH) TWIN HYDRAULIC REELS

ITEM NO.	DESCRIPTION	NO. REQ.	TH74XX OMP	TH76XX OMP
2	Swivel & Ell Ass'y	1	600995-1	602034-1
5	Drive Spring Ass'y	1	S260053	S260053
10	Main Shaft	1	260351	260095-2
25	U-bolt	2	1-117440	2-117440
28	Swivel Union	2	S257-2	S257-25

NOTE: Drive spring assembly part numbers for 7600 OLP and 7670 OLP is S260028. Drive spring assembly part numbers for 7640 OLP and 7650 OLP is S260028-1.

* All hose assemblies supplied on models designated OMP comply with SAE 100R1 hose specifications.

** All hose assemblies supplied on models designated OHP comply with SAE 100R2 hose specifications.

*** Reel less hose, model series TW7000 OLP is U/L listed #70H2.

****Hose supplied on reel is Twin-Siamese type meeting R.M.A. and C.G.A. Type V.D., Grade RM specifications. Use of other types of hose is not recommended.

PARTS COMMON TO FUEL REELS

ITEM NO.	DESCRIPTION	NO. REQ.	F79XX OLP
1	Swivel Assembly	1	S602026-2
3	Swivel Union	1	S257-21
28	90° Ell	1	S157-4
-	Hose Assembly	1	600160-1
3/4" FPT, 200 PSI/F7925 OLP, 500 PSI/F7900 OLP			

PARTS COMMON TO OLB REELS

ITEM NO.	DESCRIPTION	NO. REQ.	76XX OLB	78XX OLB
1	Swivel Ass'y	1	600093-1	S600092-1
3	90° Ell	1	S160-3	S160-4
10	Main Shaft	1	261046	261045

PARTS COMMON TO (TW) TWIN WELD REELS

ITEM NO.	DESCRIPTION	NO. REQ.	TW7XXX OLP	TW7XXX OLPT
5	Drive Spring Ass'y	1	S260028	S260028
10	Main Shaft	1	260351	260351
15	Hose Bumper Ass'y	1	8-HR1004-3	8-HR1004-3
25	U-bolt	2	1-117440	1-117440
29	Swivel Assembly	1	S260057-3	S260057-1

PARTS COMMON TO STAINLESS REELS

ITEM NO.	DESCRIPTION	NO. REQ.	78XX OLS	78XX OMS
1	Swivel Ass'y	1	S600092-2	S600092-2
3	90° Ell	1	S160-4	S163-4
5	Drive Spring Ass'y	1	S260037	S260053
10	Main Shaft	2	261045	261045
25	U-bolt	1	260242	260242



7.901.103 (Turbine) & 13.901.151 (Long Range)

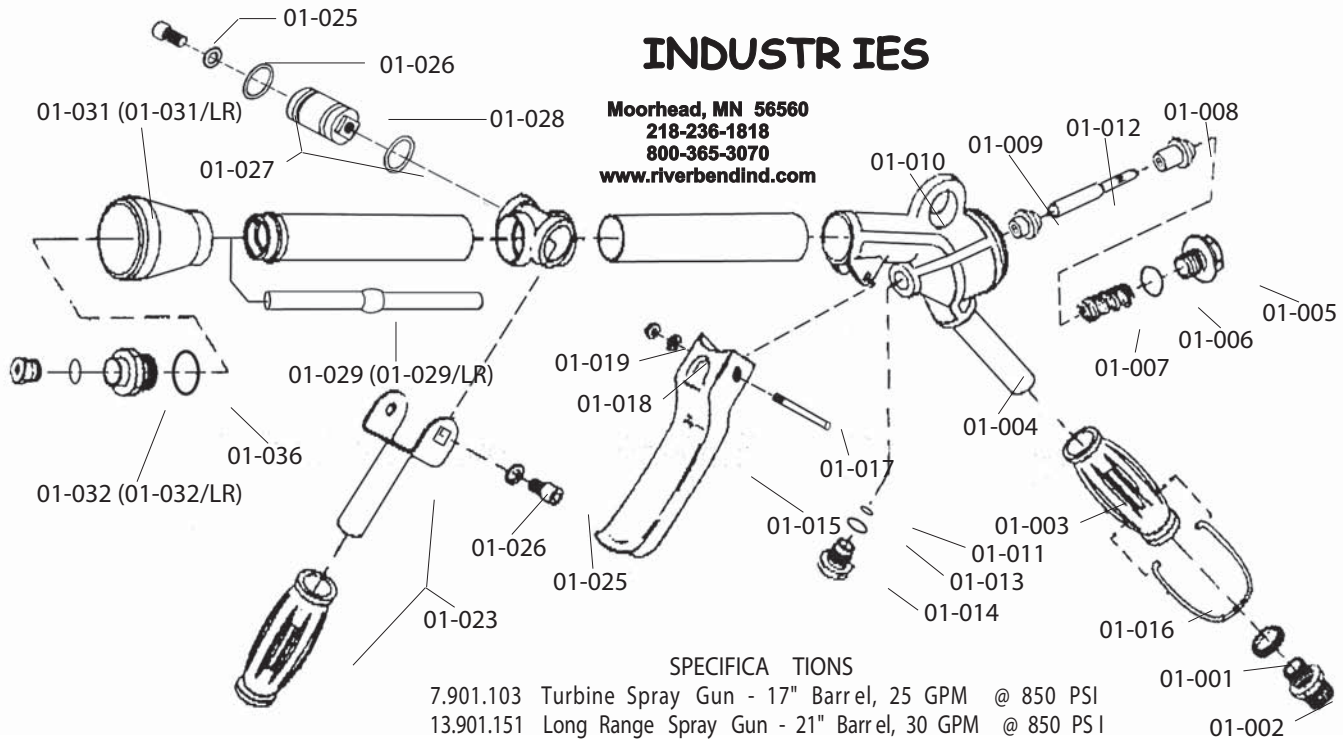
High Performance Adjustable Spray Gun

UDOR High Performance Spray Guns have a spray pattern that is adjustable from a concentrated 0° straight stream to a 60° fine mist cone.

They are an excellent choice for a wide variety of applications including tree & shrub spraying, pest control, fire fighting, air craft de-icing and equipment cleaning.

INDUSTRIES

Moorhead, MN 56560
218-236-1818
800-365-3070
www.riverbendind.com



SPECIFICATIONS

7.901.103 Turbine Spray Gun - 17" Barrel, 25 GPM @ 850 PSI
13.901.151 Long Range Spray Gun - 21" Barrel, 30 GPM @ 850 PSI

PA RT #	DESCRIPTION	QTY	PA RT #	DESCRIPTION	QTY
01-001	Washer	1	01-017	Trigger Pin	1
01-002	Inlet Adapter	1	01-018	Washer	1
01-003	Handle	1	01-019	Nut	1
01-004	Inlet Tube	1	01-023	Front Grip Assembly	1
01-005	Plug	1	01-025	Bolt	2
* 01-006	O-Ring	1	01-026	Washer	2
01-007	Spring	1	* 01-027	O-Ring	2
* 01-008	Poppet	1	01-028	Regulator	1
* 01-009	Seat	1	01-029	Inner Tube	1
01-010	Body	1	01-029/LR	Inner Tube - Long Range	1
* 01-011	O-Ring	1	01-031	Nozzle Protector	1
01-012	Plunger	1	01-031/LR	Nozzle Protector - Long Range	1
* 01-013	O-Ring	1	01-032	Nozzle Retainer	1
01-014	Guide	1	01-032/LR	Nozzle Retainer - Long Range	1
01-015	Trigger	1	* 01-036	O-Ring	1
01-016	Trigger Clip	1			

* Parts Included in Repair Kit # Kit 10/11.

SPRAY TIP PERFORMANCE CHART (High Performance Spray Guns) - Gallons Per Minute/Maximum THrow in Feet

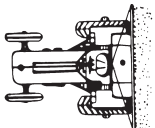
PA RT #	Orifice (mm)	Material	100 PSI	200 PSI	400 PSI	600 PSI	800 PSI
68.1802.54	2.3	Ceramic	2.0 / 24	2.5 / 29	4.0 / 34	5.0 / 42	5.5 / 45
68.1802.16	2.5	Ceramic	2.5 / 23	3.0 / 28	4.5 / 32	5.5 / 40	6.5 / 44
68.1802.17	3.0	Ceramic	3.0 / 28	4.5 / 29	6.5 / 34	8.0 / 41	9.0 / 4
13.1802.73	3.5	S/S	4.5 / 31	6.0 / 36	8.5 / 41	11.0 / 50	12.0 / 54
13.1802.58	4.0	S/S	5.0 / 35	7.5 / 38	10.0 / 43	13.5 / 53	14.5 / 59
13.1802.59	4.5	S/S	6.5 / 37	9.0 / 39	12.5 / 44	16.5 / 54	18.0 / 62
13.1802.60	5.0	S/S	7.5 / 33	10.0 / 41	14.0 / 47	18.5 / 59	21.0 / 67
13.1802.61	5.5	S/S	8.0 / 35	11.5 / 42	16.0 / 47	21.0 / 59	23.0 / 70
13.1802.75	6.0	S/S	9.0 / 38	12.5 / 44	18.0 / 54	23.0 / 66	26.0 / 74
13.1802.74	7.0	S/S	9.5 / 21	13.5 / 47	19.0 / 57	24.0 / 70	27.0 / 77

NOTES

NOTES

OWNERS MANUAL

POULTRY HOUSE SPRAYER



van's

EQUIPMENT COMPANY

P.O. BOX 3157 • 2169 SYLVESTER HIGHWAY • MOULTRIE, GEORGIA 31776-3157

We Appreciate You and Your Business!

(229) 985-1101