

PROBLEM STATEMENT

The project involves the renovation of a **second-floor** suite within a commercial office complex in Fairview Park. The client would like to see a design that will accommodate a variety of patients ranging from **three to eighteen years old** through behavioral health outpatient services. The design must incorporate spatial adjacencies that will aid in the pursuit of excellence through encouraging activities that **foster communication, collaboration, and positive distraction**. Design initiatives must address code compliance, with the protection of patients, guests, and facility employees remaining paramount. Evidence-based design will inform the design process of the built environment to improve patient outcomes through **initiatives** such as **safety, movement, a healing environment, and care in the community**. The project will include the use of furnishings capable of withstanding vigorous daily use by vistors, staff, and patients suffering from a diverse range of mood and anxiety disorders. The project will enhance the surrounding community; creating an atmosphere dedicated to **meaningful change** through coordinated behavioral and mental healthcare.

CONCEPT STATEMENT

Our **holistic** behavioral health clinic design aims to create a space that nurtures the **mind**, creates care through **community**, prioritizes **safety**, encourages **movement**, and promotes **healing**. Through thoughtful space planning, calming colors, and natural elements, we aim to create an environment that supports mental **well-being**. Safety precautions, such as secure entrances and calming spaces, will ensure a sense of **security** for patients. The layout will incorporate spaces for movement, such as tranquil areas and outdoor spaces, to promote physical health, stress reduction, and **mental clarity**. Finally, healing will be fostered through the use of soothing materials, natural light, and therapeutic spaces designed to inspire **relaxation** and **recovery**.

PROJECT DRIVERS & WELL STANDARDS



Safety

Safety for behavioral health clinics goes much deeper than just **security** for the clinic. Safety is a crucial factor when considering material selections, **spatial adjacencies**. Adjacencies are important when coming up with the layout of a clinic because you want to ensure there are **no alcoves** that could turn into hiding spots. Safety is very important when thinking of the safety and security of staff as well as patients.



Movement

The **WELL Movement Concept** supports **positive distraction** within treatment, through utilizing movement as a **source of increased self-esteem, personal accomplishment, and control** within the healthcare environment. Involvement of physical activity in group sessions offers **improved mood, concentration, and release of endorphins** while engaging with patients alike in personal struggles and future goals. Physical activity between various tasks for facility staff allows for **increased productivity** while **mitigating the effects of stress** and emotional health associated with working in healthcare.



Light

Mindful Oasis focuses on **functionality** and pays attention to the psychological needs of the patients through the **WELL Light Concept**. **Natural** light and **sun** exposure are both associated with improved depressive symptoms along with mood, energy, and sleep quality. **Daylight** also is proven to reduce the length of stay for patients.



Mind

Research has consistently shown that the thoughtful design of a behavioral health clinic, incorporating elements such as **soothing colors, natural light, and comfortable spaces**, can have a profound impact on patients' healing, promoting a sense of **tranquility** and emotional **well-being**. The healing environment supports the **WELL Mind Concept**.



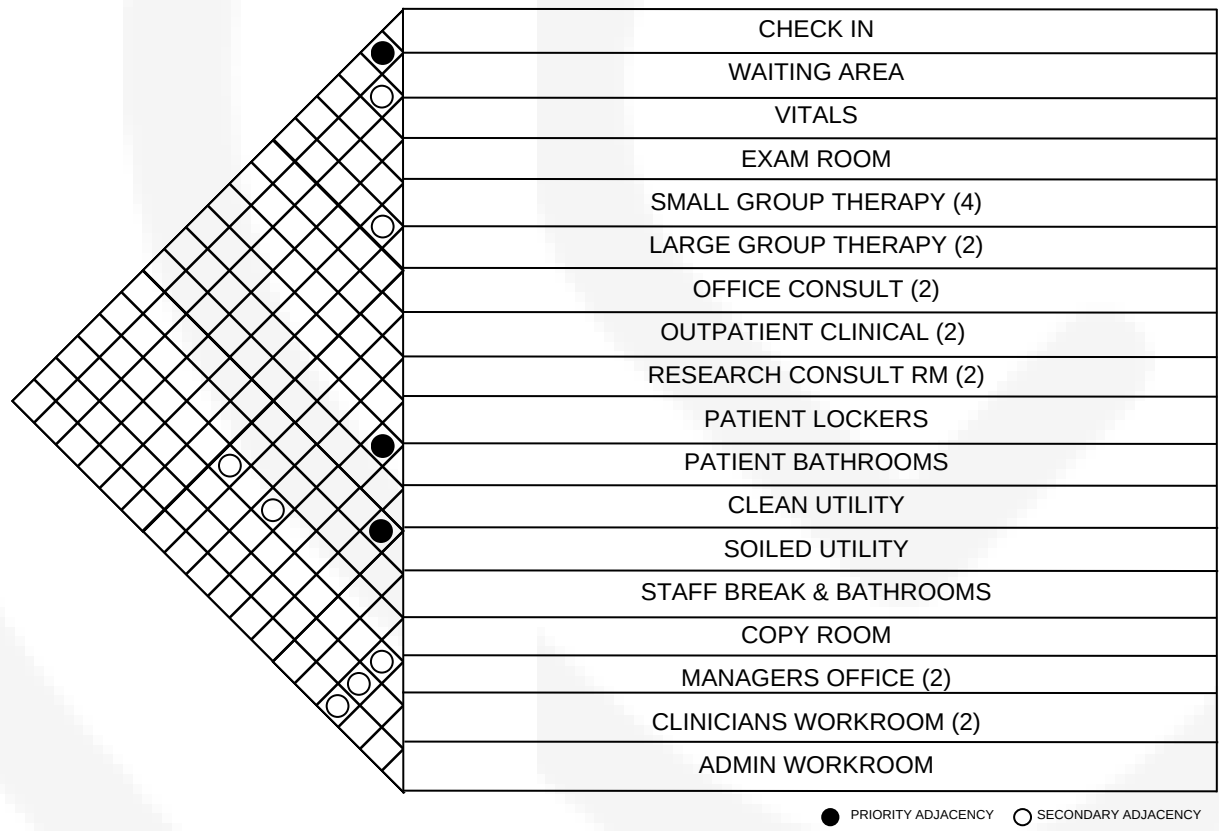
Community

The **WELL Community Concept** is a critical component of successful treatment within behavioral health. Community provides a sense of **belonging** and **support** to those suffering from a diverse range of anxiety and mood disorders. For individuals struggling with mental health, **collaborative care** allows for patients to identify health issues through interacting with those alike as well as actively utilize support systems and resources.

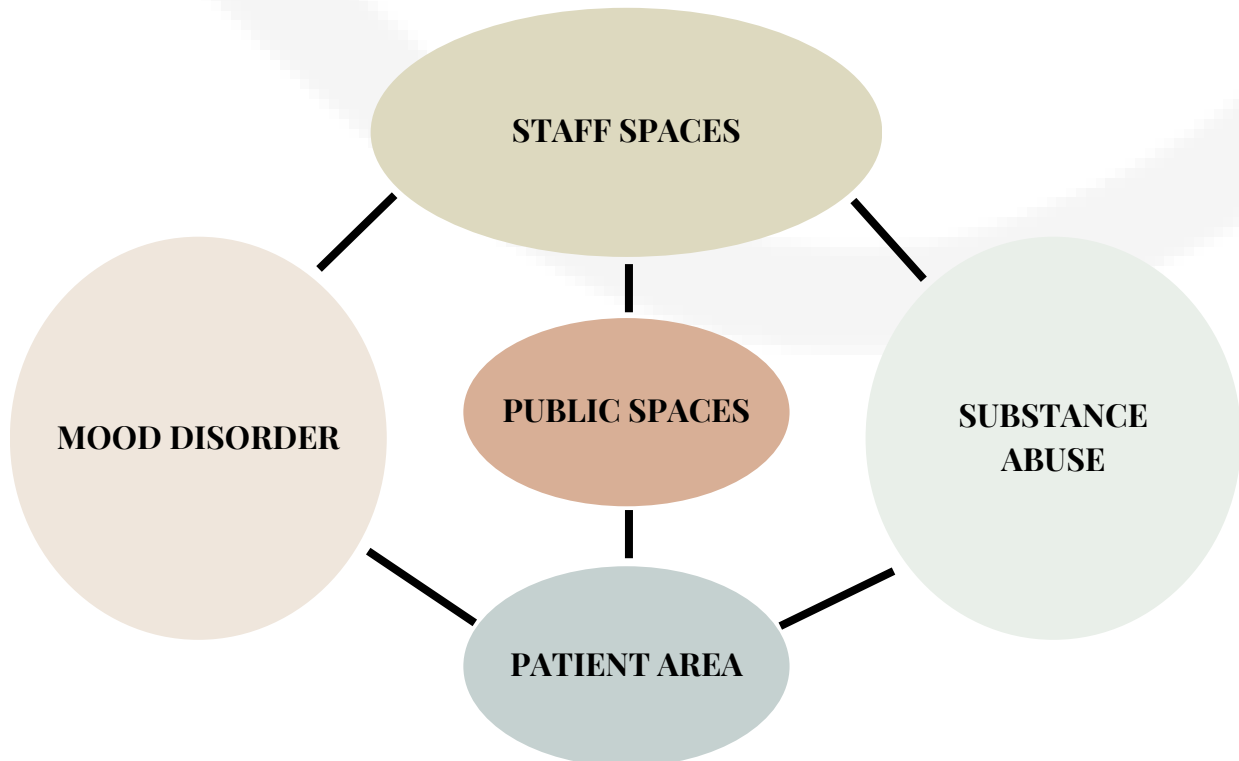
CRITERIA MATRIX

ROOM OR SPACE	SQ. FT.	OPEN TO PUBLIC	PRIVACY NEEDED	PLUMBING NEEDED	COMMENTS & NOTES
CHECK IN	457	Y	N	N	CHECK-IN AREA FOR PATIENTS, FAMILIES, AND STAFF
WAITING AREA	862	Y	N	N	VARIETY OF SEATING & TABLES OPTIONS
VITALS	100	N	Y	N	SOME PRIVACY & A PLACE TO SIT
EXAM ROOM	150	N	Y	N	NOT AN OVERWHELM ROOM
SMALL GROUP THERAPY (4)	1600	N	Y	N	6-8 PATIENTS WITH THERAPIST OR COUNSELOR
LARGE GROUP THERAPY (2)	1600	N	Y	N	18-24 PATIENTS WITH 1-2 THERAPIST OR COUNSELOR
OFFICE CONSULT (2)	200	N	Y	N	DESK & TASK CHAIR, SOFT SEATING
OUTPATIENT CLINICAL (2)	500	N	Y	N	"LIVING ROOM" AREA
RESEARCH CONSULT RM (2)	500	N	Y	N	SPACE FOR OBSERVATION OF CHILDERN
PATIENT LOCKERS	50	N	N	N	20 LOCKERS
PATIENT BATHROOMS	100	N	Y	Y	ADA BATHROOMS
CLEAN UTILITY	115	N	Y	Y	STORAGE FOR CLEAN TOYS & MEDICAL SUPPLIES
SOILED UTILITY	115	N	Y	Y	STORAGE FOR DIRTY TOYS & MEDICAL SUPPLIES
STAFF BREAK ROOM	925	N	N	Y	18-25 STAFF MEMBERS
STAFF BATHROOMS	100	N	Y	Y	ADA BATHROOMS
COPY ROOM	50	N	N	N	TWO AREAS FOR COPY MACHINES & PRINTERS
MANAGERS OFFICE (2)	240	N	Y	N	SINGLE PRIVATE OFFICE
CLINICIANS WORKROOM (2)	700	N	Y	N	SHARED WORKROOM 6-8 THERAPISTS & COUNSELORS
ADMIN WORKROOM	250	N	Y	N	SHARED WORKROOM 4 EMPLOYEES

ADJACENCY MATRIX



BUBBLE DIAGRAM

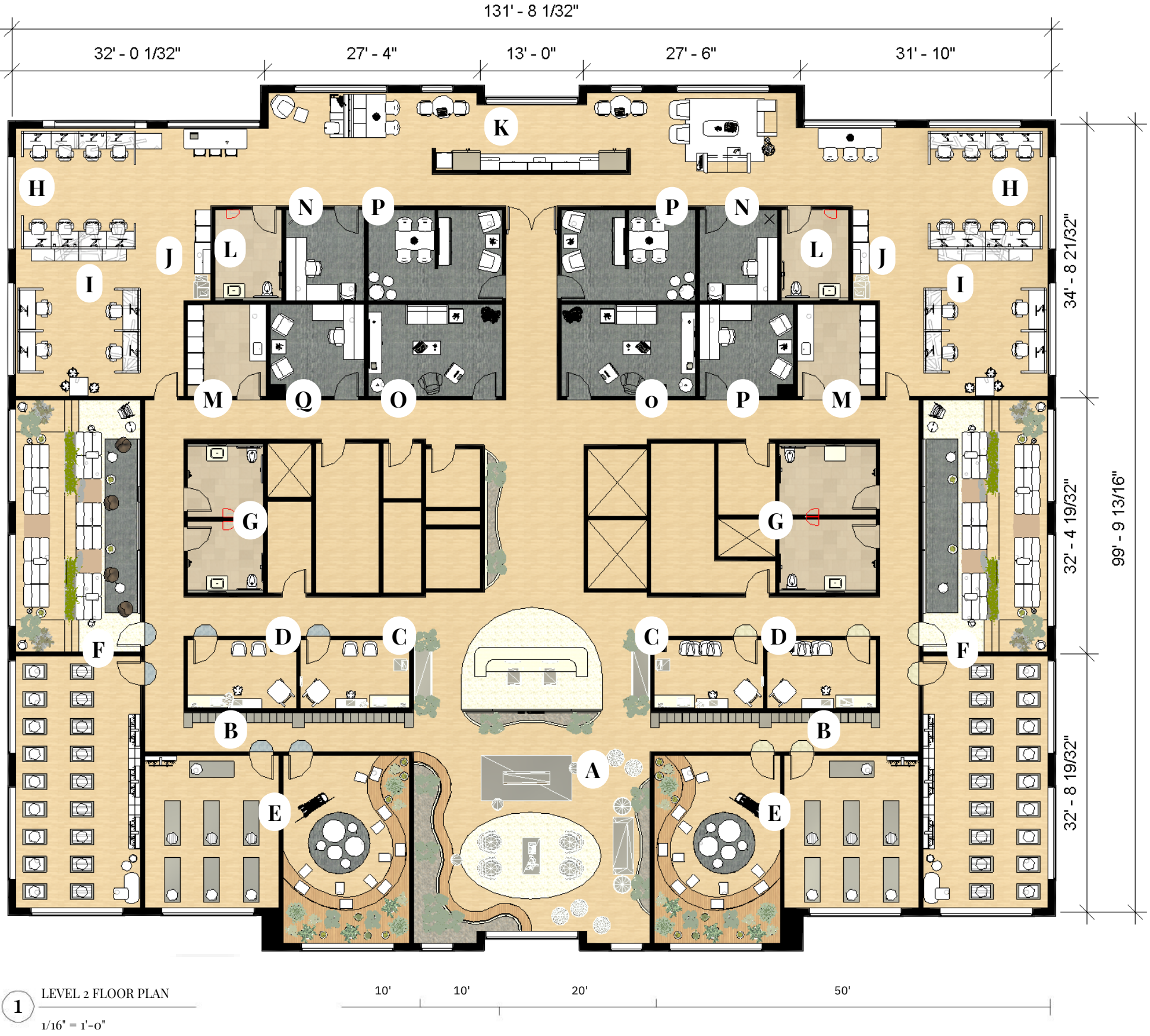


INSPIRATION IMAGES

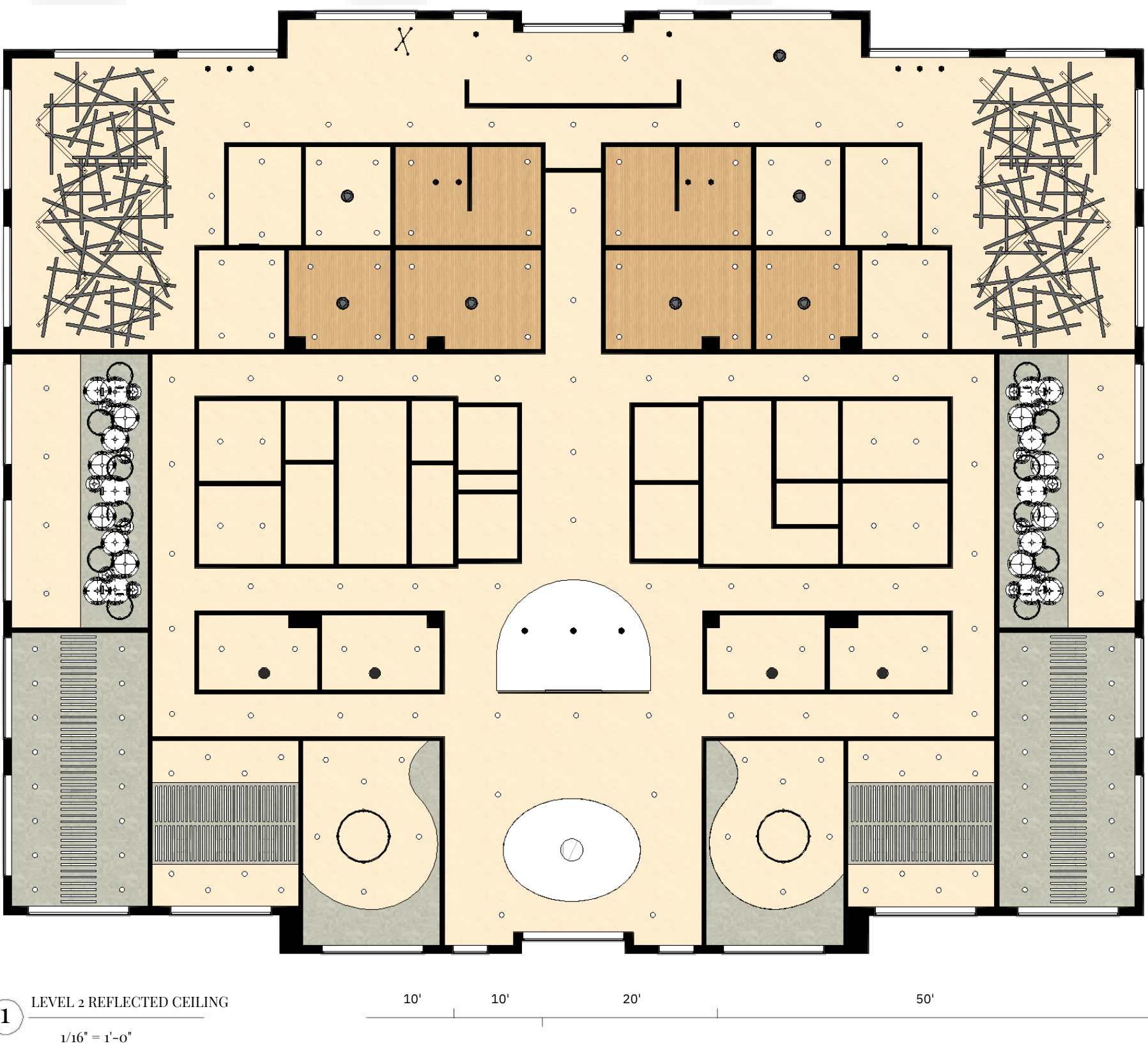


FLOOR PLAN

- A Reception & Waiting Area
- B Locker Area
- C Vitals
- D Exam Room
- E Small Group Therapy Rooms
- F Large Group Therapy Rooms
- G Public Restrooms
- H Clinician Work Area
- I Administration Work Area
- J Copy/Print Space
- K Staff Breakroom
- L Staff Restrooms
- M Clean/Soiled Utility
- N Managers Office
- O Outpatient Clinical Room
- P Research Consult Room
- Q Office Consult Room



REFLECTED CEILING PLAN



- LIGHT FIXTURES**
 - Pendant
 - Chandelier
 - Pendant
 - Recessed
 - Linear Pendant
 - Wall Sconce
- CEILING MATERIALS**
 - Stone
 - Alabaster
 - Wood
 - Cloud Grey
 - Acoustic Felt

ALEX ALLEN, CHLOE FREUND, ABI KELLY

BOARD: 1 OF 4

A **kind, holistic**, hopeful **community** where those tested by life’s challenges discover the **strength** to **heal**.

