



HYDRAULIC RESCUE TOOLS & OTHER RESCUE EQUIPMENT

MAHADEV INDUSTRIES

dag 205,mahisgote,sankrail,howrah-711313



**RESQFORGE**

RESCUE TOOLS

RESQFORGE-Focus on  
Intelligent Fire Equipment  
Manufacturing

欣拓消防-专注消防装备智造



# AMPHIBIOUS

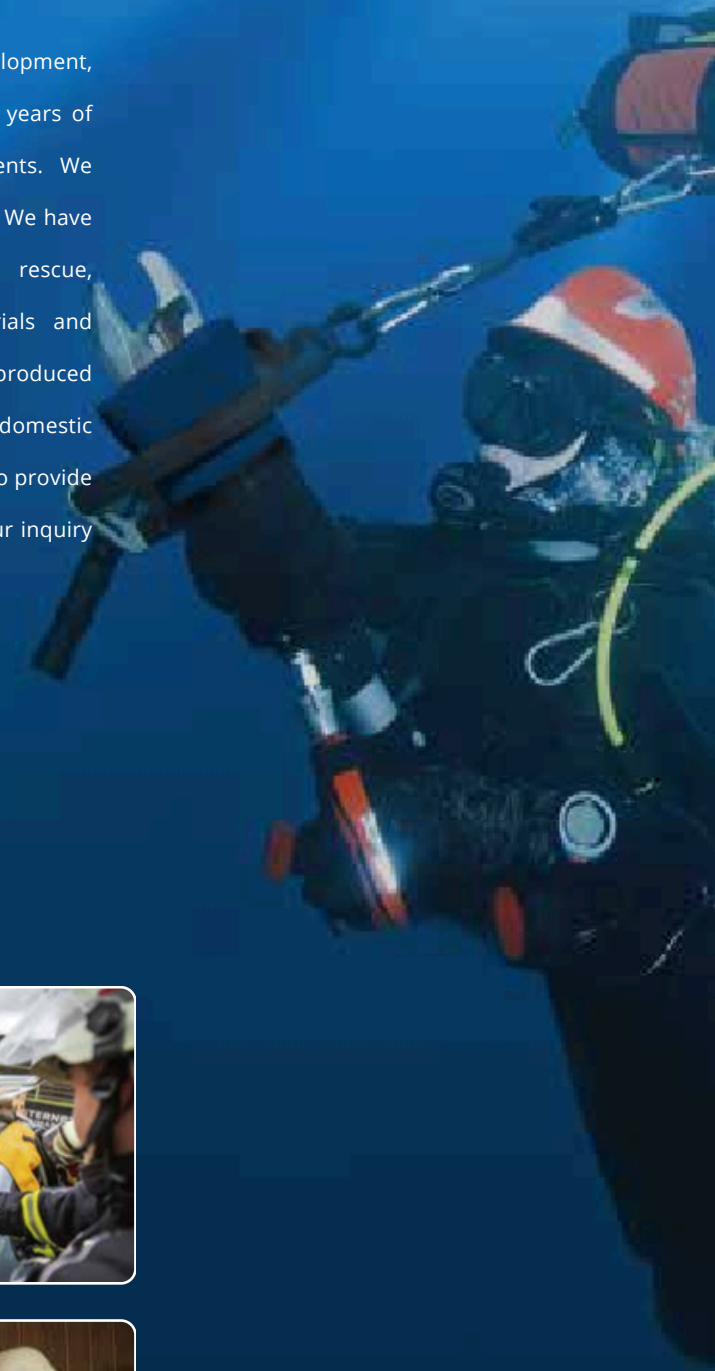
All environment applicable  
Performance online

CE   **RoHS**  
Compliant



## COMPANY INTRODUCTION

Since 2019, MAHADEV INDUSTRIES. has been focusing on the development, production, and sales of electric hydraulic tool product. After 5 years of technical accumulation, we have a number of invention patents. We committed to the R&D of high-end fire rescue demolition products. We have three main series, which are electric amphibious demolition rescue, hydraulic demolition rescue and portable rescue. The materials and manufacturing processes of key components are purchased and produced according to military standards. The company is equipped with domestic first-class production equipment and complete testing equipment, to provide full guarantee for product quality. We sincerely look forward to your inquiry and cooperation.



# Amphibious Electric Demolition Tool Set



### Amphibious Electric Combi Tool

Can change battery under water

Protection Level IP68



### Amphibious Electric Cutter

Can change battery under water

Protection Level IP68



Specifications	SC-358 E/SC-358 E2	SC-475 E/SC-475 E2
Working Pressure	≥72Mpa	≥72Mpa ≥Φ35mm
Cutting Performance	≥Φ35mm Round bar, 50*16mm Flat bar	Round bar, 50*16mm Flat bar ≥320mm
Cutting Opening Distance	≥260mm	≥470mm ≥52.2kN ≤20kg 28V 5.6Ah
Spreading Distance	≥370mm	1.3kg
Min. Spreading Force	≥52kN	
Net Weight	≤19kg	
Battery	28V 5.6Ah 1.3kg	

Specifications	S-312 E/S-312 E2	S-313 E/S-313 E2
Working Pressure	≥72Mpa	≥72Mpa
Cutting Performance	≥Φ36mm Round bar, 50*20mm Flat bar	≥Φ36mm Round bar, 50*20mm Flat bar
Cutting Opening Distance	≥170mm	≥325mm
Net Weight	≤19kg	≤19kg
Battery	28V 5.6Ah 1.3kg	28V 5.6Ah 1.3kg

### Amphibious Electric Expander

Can change battery under water

Protection Level IP68



Specifications	SP-311 E/SP-311 E2	SP-730 E/SP-730 E2
Working Pressure	≥72Mpa	≥72Mpa
Spreading Distance	≥731mm	≥730mm
Min. Spreading Force	≥64kN	≥60kN
Net Weight	≤24kg	≤21kg
Battery	28V 5.6Ah 1.3kg	28V 5.6Ah 1.3kg

### Amphibious Electric Ram

Can change battery under water

Protection Level IP68



Specifications	R-420 E/R-420 E2	R-410 E/R-410 E2
Working Pressure	≥72Mpa ≥390mm	≥72Mpa
1st Extending Stroke	≥360mm ≥141kN	≥500mm
2nd Extending Stroke	≥58kN ≤538mm	/
1st Stroke Extending Force	≤20kg 28V 5.6Ah	≥165.2kN
2nd Stroke Extending Force	1.3kg	/
Closed Length		≤640mm
Net Weight		≤20kg
Battery		28V 5.6Ah 1.3kg

## Amphibious Electric wedge

Can change battery under water

Protection Level IP68



Specifications	SR-285 E/SR-285 E2
Working Pressure	≥72Mpa ≥ 55mm
Max opening distance	≥305kN ≤5 mm
Max Expansion Force	≤16kg 28V 5.6Ah
Min Insertion Gap	1.3kg
Net Weight	
Battery	



# Electric Demolition Tool Set



## Electric Combi Tool



Specifications	SC-437558 E	SC-475 E $\geq 72\text{Mpa}$ $\geq \Phi 35\text{mm}$ Round bar,
Working Pressure	$\geq 72\text{Mpa}$	50*16mm Flat bar $\geq 320\text{mm}$ $\geq 470\text{mm}$
Cutting Performance	$\geq \Phi 35\text{mm}$ Round bar, 50*16mm Flat bar	$\leq 52.2\text{kN}$ $\leq 19\text{kg}$ 28V 5.6Ah 1.3kg
Cutting Opening Distance	$\geq 260\text{mm}$	
Spreading Distance	$\geq 370\text{mm}$	
Min. Spreading Force	$\geq 52.2\text{kN}$	
Net Weight	$\leq 19\text{kg}$	
Battery	28V 5.6Ah 1.3kg	



## Electric Cutter



Specifications	S-312 E $\geq 72\text{Mpa}$ $\geq \Phi 36\text{mm}$ Round bar,
Working Pressure	50*20mm Flat bar $\geq 190\text{mm}$ $\leq 18\text{kg}$ 28V
Cutting Performance	5.6Ah 1.3kg
Cutting Opening Distance	
Net Weight	
Battery	

## Electric Expander



Specifications	SP-311 E	SP-730 E
Working Pressure	$\geq 72\text{Mpa}$	$\geq 72\text{Mpa}$
Spreading Distance	$\geq 730\text{mm}$	$\geq 730\text{mm}$
Min. Spreading Force	$\geq 64\text{kN}$	$\geq 60\text{kN}$
Net Weight	$\leq 23\text{kg}$	$\leq 19\text{kg}$
Battery	28V 5.6Ah 1.3kg	28V 5.6Ah 1.3kg

## Electric Ram



Specifications	R-420 E $\geq 72\text{Mpa}$	R-410 E
Working Pressure	$\geq 390\text{mm}$	$\geq 72\text{Mpa}$
1st Extending Stroke	$\geq 360\text{mm}$	$\geq 500\text{mm}$
2nd Extending Stroke	$\geq 160\text{kN}$ $\geq 65\text{kN}$	/
1st Stroke Extending Force	$\leq 600\text{mm}$ $\leq 18\text{kg}$	$\geq 165\text{kN}$
2nd Stroke Extending Force	28V 5.6Ah 1.3kg	/
Closed Length		$\leq 640\text{mm}$
Net Weight		$\leq 18\text{kg}$
Battery		28V 5.6Ah 1.3kg

## Electric wedge



Specifications	SR-285	E
Working Pressure	$\geq 72\text{Mpa}$	$\geq$
Max opening distance	55mm	$\geq 305\text{kN}$
Max Expansion Force	$\leq 5\text{ mm}$	$\leq 14\text{kg}$
Min Insertion Gap	28V 5.6Ah	1.3kg
Net Weight		
Battery		

## Electric Demolition Tool Set

Rechargeable Motor



Electric Cutter



Electric Expander



Specifications	Electric Cutter	Specifications	Electric Expander
Working Pressure	≥72Mpa	Working Pressure	≥72Mpa ≥555mm
Cutting Performance	≥Φ32mm Round bar	Spreading Distance	≥426mm ≥11.5kg
Cutting Opening Distance	≥170mm	Pulling Distance	
Net Weight	≥10.1kg	Net Weight	
Specifications	Rechargeable Motor		
Net Weight	≤2kg		
Battery	18V 5ah		

## Electric Demolition Tool Set



Electric Combi Tool

Electric Ram



Specifications	Electric Combi Tool
Working Pressure	≥72Mpa ≥320mm
Cutting Opening Distance	≥247mm ≥12kg
Pulling Distance	Electric Ram
Net Weight	≥72Mpa ≥550mm
Specifications	Electric Ram
Working Pressure	≥10kg
Closed Length	
Extending Stroke	
Stroke Extending Force	
Net Weight	

## Electric Combi Tool



Voltage: 28V  
Battery: 80%

## Rechargeable Rebar Cutter



Voltage: 28V  
Battery: 80%

Specifications	BC-320
Working Pressure	≥72Mpa
Cutting Performance	≥Φ25 Round bar; 50*12mm Flat bar
Spreading Distance	≥320mm
Min. Spreading Force	≥38kN
Net Weight	≤13kg
Battery	28.8V 5.6Ah 0.85kg

Specifications	BC-16	BC-20	BC-22	BC-25
Cutting Performance	≥4-16mm	≥4-20mm	≥4-22mm	≥4-25mm
Cutting Opening Distance	≥18mm	≥23mm	≥25mm	≥28mm
Net Weight	≤ 7kg	≤8kg	≤8kg	≤10kg
Battery	18V 5Ah	18V 5Ah	18V 5Ah	28.8V 5.6Ah



# Knapsack Electric Demolition Tool Set



Miniature Door Opener	Electric Pump
Closed Length ≤ 220mm	Working Pressure ≥ 72Mpa
Opening Distance ≥ 230mm	High Pressure Flow ≥ 0.37L/min
Opening Force ≥ 65kN	Pressure Flow ≥ 1.2L/min
Weight ≤ 4kg	Battery: 28V 6.0Ah 166wh
Miniature Expander	Miniature Cutter
Spreading Distance ≥ 160mm	Opening Distance ≥ 60mm
Expanding Force ≥ 56kN	Cutting Performance ≥ Φ20mm Round bar
Weight ≤ 4kg	Weight ≤ 2.5kg

Miniature Door Opener	Electric Pump
Closed Length ≤ 372mm	Working Pressure ≥ 72Mpa
Opening Distance ≥ 250mm	High Pressure Flow ≥ 0.37L/min
Opening Force ≥ 80kN	Pressure Flow ≥ 1.2L/min
Weight ≤ 5kg	Battery: 28V 6.0Ah 166wh
Miniature Expander	Miniature Cutter
Spreading Distance ≥ 160mm	Opening Distance ≥ 47mm
Expanding Force ≥ 56kN	Cutting Performance ≥ Φ22mm Round bar
Weight ≤ 4kg	Weight ≤ 4.5kg

## Double Output Hydraulic Motor Pump



Specifications	MP-072
Working Pressure	≥72Mpa
Hydraulic Fluid Volume	≥4L
Gasoline volume	≥770mL
Product Dimensions	≤L500×W370×H450mm
Net Weight	≤24kg

## Double Output Hydraulic Motor Pump



Specifications	ZYBJQ-72/0.75(XT-072)
Working Pressure	≥72Mpa
Hydraulic Fluid Volume	≥4.0L
Gasoline volume	≥770mL
Product Dimensions	≤ L385×W315×H480mm
Net Weight	≤22 kg

## Hydraulic Electric Pump



Specifications	XTD-72D
Working Pressure	≥72Mpa
Hydraulic Fluid Volume	≥4L
Product Dimensions	L520mm x W200mm x H300mm
Net Weight	≤10Kg
Battery	28V 5.6Ah 1.3kg

## Hydraulic Manual Pump



Specifications	BS-72/2XT
Working Pressure	≥72Mpa
Hydraulic Fluid Volume	≥1.5L
Product Dimensions	L720×W125×H190mm
Net Weight	≤7kg





## Laser Positioning

---

High Directivity, High Brightness, High Coherence  
Quickly and accurately lock the target position



## LED Lights

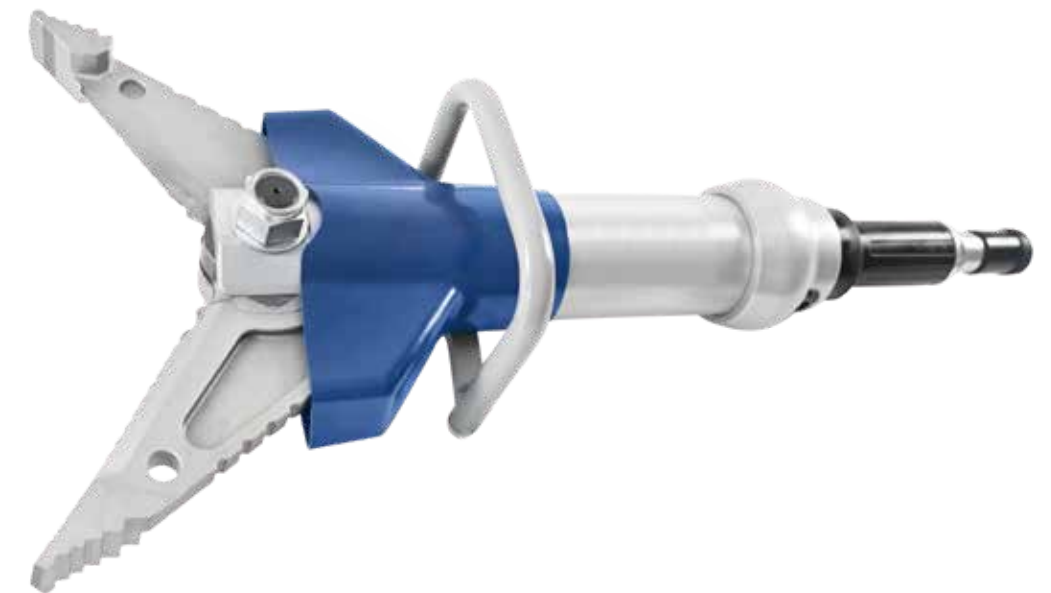
---

Provide reliable light source support  
Ensure the efficiency of rescue  
Tailless Connection

# Hydraulic Combi Tool

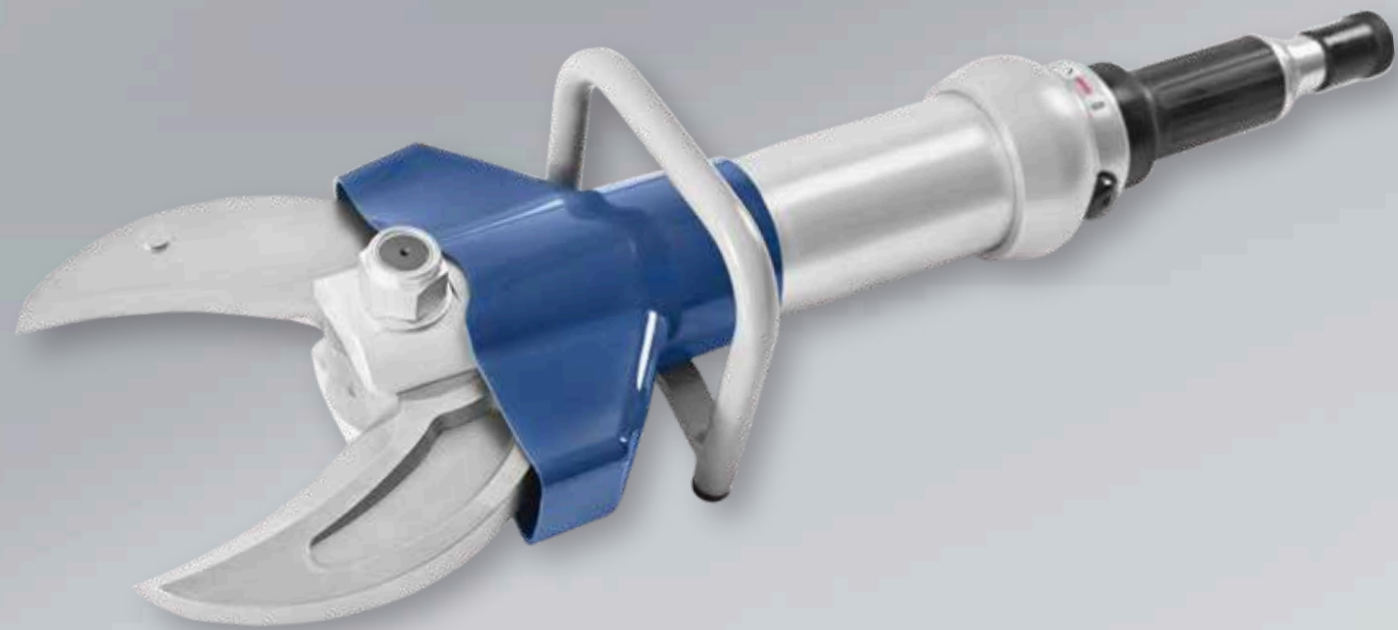


## Hydraulic Combi Tool



Specifications	SC-358/SC-470 $\geq 72\text{Mpa}$ $\geq \Phi 35\text{mm}$ Round
Working Pressure	72mpa
Cutting Performance	Flat bar
Cutting Opening Distance	$\geq 260\text{mm}/\geq 320\text{mm}$
Spreading Distance	$\geq 370\text{mm}/\geq 470\text{mm}$
Min. Spreading Force	$\geq 52\text{kN}/\geq 42\text{kN}$
Net Weight	$\leq 15\text{kg}/\leq 16\text{kg}$

# Hydraulic Cutter



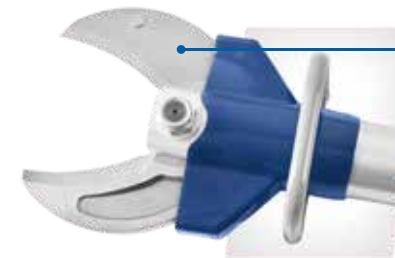
## Hydraulic Cutter



Inclined Blades



Olecranon Blades



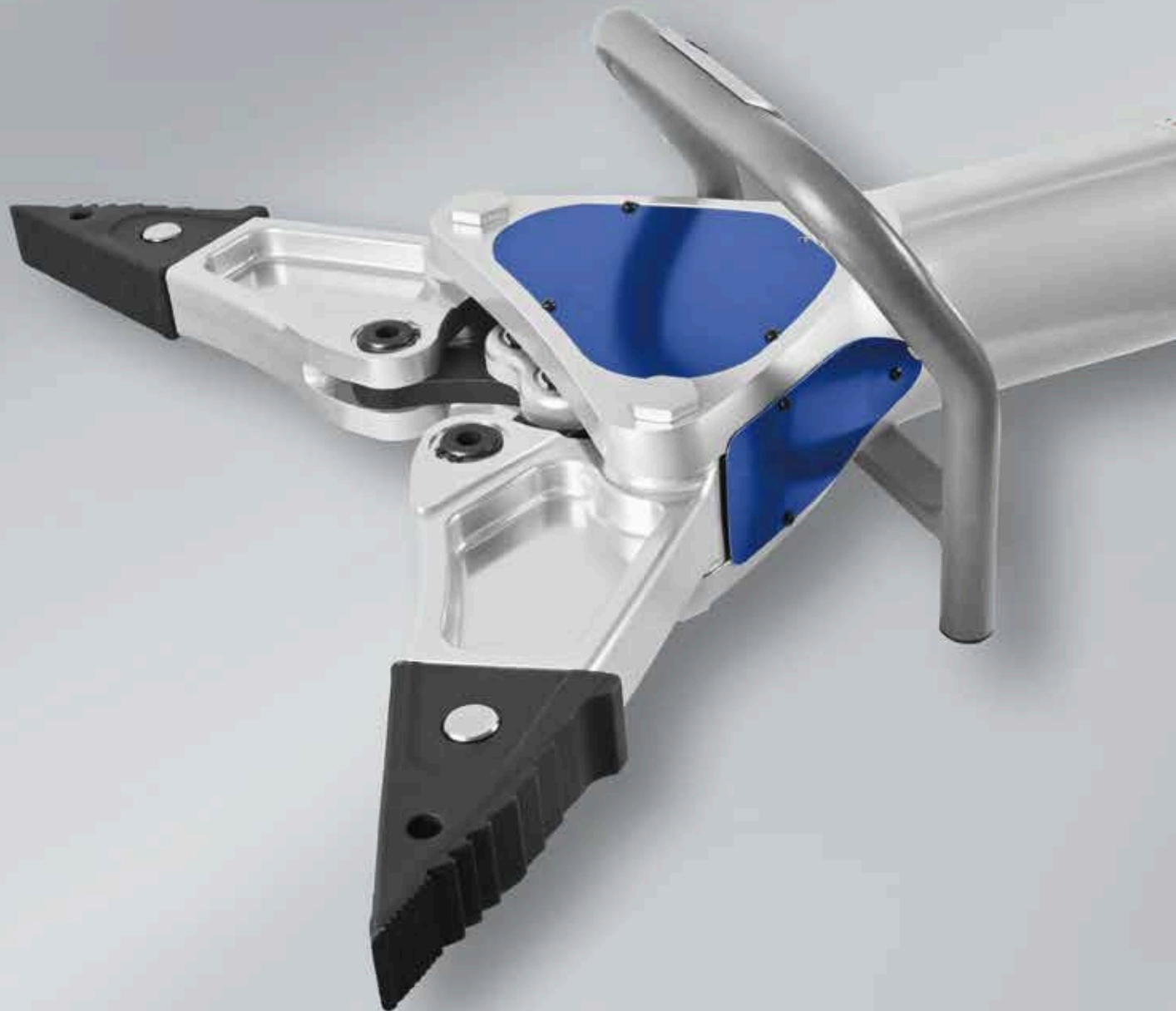
U-Shaped Blades



Flat central bolt construction

Specifications	S-312/XT-170/S-313/S-512
Working Pressure	≥72Mpa
Cutting Performance	≥Φ35mm Round bar;50*20mmFlat bar/≥Φ40mmRound bar;50*25mmFlat bar
Cutting Opening Distance	≥170mm/≥170mm/≥325mm/≥200mm
Net Weight	≤15kg/≤19kg

# Hydraulic Expander



## Hydraulic Expander



Specifications	SP-730/SP-311
Working Pressure	≥72Mpa
Spreading Distance	≥730mm
Min. Spreading Force	≥58.4kN
Net Weight	≤16kg/≤19kg

# Hydraulic Ram



## Hydraulic Ram



Specifications	R-410	R-420	R-750	R-450
Working Pressure	≥72Mpa	≥72Mpa	≥72Mpa	≥72Mpa
1st Extending Stroke	≥500mm	≥390mm	/ / / /	≥305mm
2nd Extending Stroke	/	≥357mm	≤750mm	≥285mm
1st Stroke Extending Force	≥181kN	≥150kN	≤17kg	≥785mm
2nd Stroke Extending Force	/	≥58kN	≥250mm	≥1070mm
Closed Length	≤653mm	≤530mm	≥250mm	≤480mm
Net Weight	≤14kg //	≤13kg //	≥172kN	≤17kg ///
Left Extending Stroke	//	//	≥172kN	/
Right Extending Stroke				
Left Stroke Extending Force				
Right Stroke Extending Force				

## HNT-370

Hydraulic Concrete Breaker



Specifications	HNT-370
Opening Distance	≥370
Cutting Opening Distance	≥160mm
Cutting Performance	≥φ35mm Round bar ≥φ25HRB400 rebarv
Crushing Capacity	≥250mm Thickness C30 Concrete
Net Weight	≤16kg

## SR-285

Hydraulic wedge



Specifications	SR-285
Working Pressure	≥72Mpa
Max opening distance	≥55mm
Max Expansion Force	≥305kN
Min Insertion Gap	≤5 mm
Net Weight	≤10kg

**WXJQ-XT72**  
Hydraulic Universal Pliers

# Hydraulic Universal Pliers



Specifications	WXJQ-XT72
Working Pressure	≥72Mpa
Cutting Performance	≥Φ20mm Round bar; ≥6mm Flat bar
Cutting Opening Distance	≥70mm
Blade head rotation angle	≥180°
Net Weight	≤5kg



Waterproof Hydraulic Electric Pump

Model	BJD-0.6-SX
Working Pressure	≥70MPa
Hydraulic Fluid Volume	≥1.5L
Battery	≥12AH
Net Weight	≤11kg



Waterproof Hydraulic Two-staged Ram

Model	R-860L
Working Pressure	≥70MPa
1st Extending Stroke	≥650mm
1st Stroke Extending Force	≥220kN
2nd Extending Stroke	≥860mm
2nd Stroke Extending Force	≥80kN
Closed Length	≤405mm
Net Weight	≤13.5kg



Waterproof Hydraulic Expander

Model	SP-550M
Working Pressure	≥70MPa
Spreading Distance	≥370mm
Min. Spreading Force	≥32kN
Net Weight	≤12kg



Waterproof Hydraulic Combi Too

Model	Working	SC-32M
Pressure	Cutting	≥70MPa
Performance	Cutting	≥32mm Round bar
Performance	Min.	≥16mm Flat bar
Spreading Force		≥25kN
Net Weight		≤12kg



Waterproof Hydraulic Cutter

Model	S-33M
Working Pressure	≥70MPa
Cutting Opening Distance	≥165mm
Cutting Performance	≥φ33mm(Q235A Round bar)
Net Weight	≤12kg



**K1270 Toothless Saw**

Weight (excluding fuel & saw blade) (kg) ≤ 12  
 Saw Blade Diameter (mm) 400mm/350mm  
 Cutting Depth (mm) 145mm/125mm  
 Displacement (CC) ≥ 120 Power (KW) ≥ 5.8  
 Engine Speed (rpm) ≥ 13000 Fuel Tank Capacity (L) ≥ 0.7



**K970 ring Circular Saw**

Curb weight	≤ 15
Saw Blade Diameter (mm)	370
Cutting Depth (mm)	270
Displacement (CC)	≥ 94
Power (KW)	≥ 4.8
Idle Speed (r/min)	≥ 2700
Max. No-load Speed (r/min)	≥ 12500
Fuel Tank Capacity (L)	≥ 1



**K970 Toothless Saw**

Weight (excluding fuel & saw blade) (kg) ≤ 12  
 Saw Blade Diameter (mm) 400mm/350mm  
 Cutting Depth (mm) 145mm/125mm  
 Displacement (CC) ≥ 95 Power (KW) ≥ 4.8  
 Engine Speed (rpm) ≥ 13000 Fuel Tank Capacity (L) ≥ 0.7



**CDE2530XP Double-wheeled Counter-rotating Cutting Saw**

Curb weight	≤ 13
Cutting Depth (mm)	115
Saw Blade Diameter (mm)	315
Idle Speed (r/min)	≥ 2700
Max. No-load Speed (r/min)	≥ 13500
Rated Power (KW)	≥ 4.5
Cylinder Displacement (CC)	≥ 84
Fuel Tank Capacity (L)	≥ 0.70



**K770 Toothless Saw**

Weight (excluding fuel & saw blade) (kg) ≤ 11  
 Saw Blade Diameter (mm) 350 Cutting Depth (mm) 125  
 Displacement (CC) ≥ 78 Power (KW) ≥ 3.9  
 Engine Speed (rpm) ≥ 13000 Fuel Tank Capacity (L) ≥ 0.7



**450 Petrol Chainsaw**

Weight (excluding fuel, chain and guide bar) (kg)	≤ 5.2
Guide Bar Length (mm)	625
Cutting Depth (mm)	450
Displacement (CC)	≥ 52
Power (KW)	≥ 2.4
Engine Speed (rpm)	≥ 2400
Fuel Tank Capacity (L)	≥ 1.4000
	≥ 0.5



580XP Petrol Chainsaw	
Guide Bar Length (mm)	346-700
Cutting Depth (mm)	300-600
Weight(excludingfuel,chainandguidebar) (kg)	≤5.5
Cylinder Displacement (CC)	≥58
Rated Power (KW)	≥3.2
Fuel Tank Capacity (L)	≥0.7
Lubricating Oil Tank Capacity (L)	≥0.2
Idle Speed (r/min)	≥2700
Max. No-load Speed (r/min)	≥14000



K970 Concrete Diamond Chainsaw	
Curb weight- Measurement (kg)	≤9
Guide Bar Length (mm)	625
Cutting Depth (mm)	450
Displacement (CC)	≥95
Power (KW)	≥4.8
Engine Speed (rpm)	≥13000
Fuel Tank Capacity (L)	≥0.70



372XP Petrol Chainsaw	
Weight (excluding fuel & saw blade) (kg)	≤6.5
Guide Bar Length (mm)	346-700
Cutting Depth (mm)	300-600
Idle Speed (r/min)	≥2700
Maximum No-load Speed (r/min)	≥14000
Rated Power (KW)	≥4.5
Cylinder Displacement (CC)	≥84
Fuel Tank Capacity (L)	≥0.7
Lubricating Oil Tank Capacity (L)	≥0.4



XT-KJI20 Manual Combi Tool	
Rated Working Pressure	≥66MPa
Min. Spreading Force (kN)	≥34
Spreading Distance (mm)	≥160
Shearing Capacity (mm)	≥ Round bar φ20mm 10mm thickness steel plate
Handle Operating Force (N)	≤212N
Weigt (kg)	≤12.0



XTXF-A Halligan Crowbar	
Weight	≤6kg
Handle Force	≥600N
Nailing Pulling Force	≥10kN



XTDL-3520 Plasma Cutting Machine		
Continuous Working Time: Adding water once	≥30min	Power Supply Voltage: AC 220V/50Hz
Cutting Capacity: Metal plate thickness	≥17mm	Operating Current: DC3.4-10.1A
Rebar bar diameter	≥22mm	Max. Input Powe: 3520W
Glass curtain wall thickness	≥25mm	Cutting Flame Temperature: 10000°C
Welding Capacity:	0.3-17mm	Working Medium: Water
Main Machine Dimensions:	126x190x328mm	(distilled water or add 40% alcohol during welding)
Main Machine Weight:	6.5kg	



### FDPC-P6XT Anti-theft Door Demolition Tool Set

Hydraulic Hand Pump  
 Rated pressure  $\geq 70\text{MPa}$ , low pressure  $\geq 5\text{MPa}$   
 Flow rate  $\geq 0.8\text{ ml/time}$ , Low pressure  $\geq 7.5$   
 Handle force  $\leq 230\text{N}$   
 Weight  $\leq 3.2\text{ kg}$ (including hydraulic oil)

Expander  
 Expansion distance  $\geq 155\text{ mm}$   
 Min. expansion force  $\geq 42\text{ kN}$   
 Weight  $\leq 3.7\text{ kg}$

Door Opener  
 Rated separating force  $\geq 62\text{ kN}$   
 Jacking force  $\geq 70\text{ kN}$   
 Folded length  $\leq 210\text{ mm}$   
 Max. jacking distance  $\geq 300\text{ mm}$   
 Opening distance  $\geq 230\text{ mm}$   
 Weight  $\leq 4\text{kg}$   
 Crowbar

Size  $\geq 457\text{ mm}$   
 Weight  $\leq 2\text{ kg}$



### JSJ-8D Manual Demolition Tool Set

Telescopic Impact Rod: Length  $\geq 640\text{ mm}$ , Wgt  $\leq 5\text{ kg}$   
 Long Flat Chisel: Length  $\geq 470\text{ mm}$ , Wgt  $\leq 1.5\text{ kg}$   
 Short Flat Chisel: Length  $\geq 290\text{ mm}$ , Wgt  $\leq 1.0\text{ kg}$   
 Long Pointed Chisel: Length  $\geq 480\text{ mm}$ , Wgt  $\leq 1.5\text{ kg}$   
 Short Pointed Chisel: Length  $\geq 305\text{ mm}$ , Wgt  $\leq 1.0\text{ kg}$   
 Flat Chisel: Length  $\geq 450\text{ mm}$ , Wgt  $\leq 1.5\text{ kg}$   
 Metal Cutting Claw: Length  $\geq 315\text{ mm}$ , Wgt  $\leq 1.5\text{ kg}$   
 Lock-breaking Claw: Length  $\geq 310\text{ mm}$ , Wgt  $\leq 2\text{ kg}$   
 Total Wgt (excluding outpacking)  $\leq 15\text{ kg}$



### XTBLQ-01 Glass Breaker

Glass Breaker  
 Power: 1.38kW  
 Speed: 13000r/min  
 Voltage: 220V-50Hz  
 Rechargeable Electric Drill  
 Speed: 1500r/min Battery: 18V 1.5Ah  
 Configuration: Glass cutting machine \*1, Glass cutting discs \*3, Rechargeable electric drill \*1, Marble glass drill bits \*7 ( $\Phi 100\text{mm} \times 1$ ,  $\Phi 50\text{mm} \times 3$ ,  $\Phi 25\text{mm} \times 3$ ), Powerful glass pliers \*1, Single-claw glass suction cup \*1, Self-controlled oil-injecting glass cutter \*1, Diamond glass round file \*1, Diamond glass flat file \*1, Glass breaking hammer \*1, Rechargeable batteries \*2, Charger \*1.

Suction force: Horizontal 50kg; Vertical 35kg  
 Cutting capacity(self-controlled oil-injecting glass cutter): 3-12mm  
 Diamond glass round&flat : 8\*200mm  
 Glass cutting disc.size : 100mm



### XTBLQ-02JD Glass Breaker

Function: mainly used for cutting various automotive glasses, architectural glasses, etc. at the rescue site. The whole set of tools is light and easy to carry.

Electric Cutter  
 Cutting speed: 150cm/min (for 5mm automotive glass), Net wgt: 1.2kg  
 Elastic Window Breaker: Length: 140mm, diameter: 18mm, wgt: 110g  
 Forcible entry ability: 5mm thick automotive tempered glass