

Summer 2023 Collection

Brouk


& CO

CATALOG SUPPLEMENT

213-536-5073

| sales@broukandco.com

| broukandco.com

|  [@broukandco](https://www.instagram.com/broukandco)

HARRISON 2 PIECE DUFFEL & GARMENT BAG

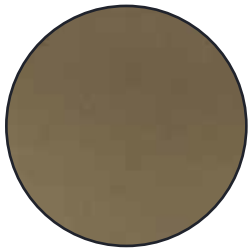
Duffel - 22" x 12" x 14"
Garment - 22" x 22" x 1.75"



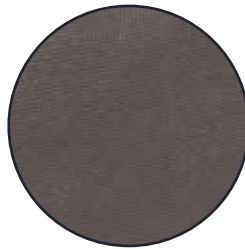
Snaps together as 1 piece.



#3536 • Navy



#3537 • Olive



#3538 • Grey



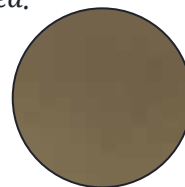
#3539 • Black



HARRISON WEEKENDER BAG

21.6" x 14.1" x 9.8"

Shoe Compartment Included.



#3541 • Olive



#3542 • Grey



#3540 • Navy



#3543 • Black

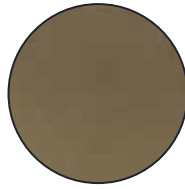


HARRISON/SKYLER TOILETRY BAG

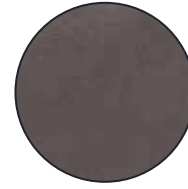
10.5" x 4.5" x 7"



#3544 • Navy



#3545 • Olive



#3546 • Grey



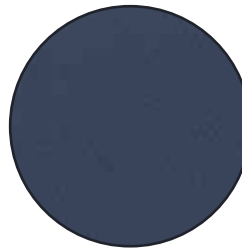
#3547 • Black



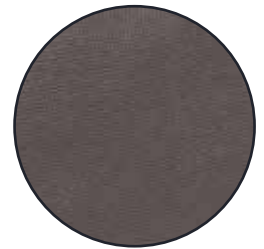
THE SKYLER COLLECTION

SKYLER WEEKENDER & OFFICE BAG

17" x 10" x 12"



#3551 • Navy



#3550 • Grey



#3548 • Olive



#3549 • Black





#3552 • Olive



8 10099 40370 1



SKYLER LAPTOP BAG

17" x 2" x 15"



#3553 • Black



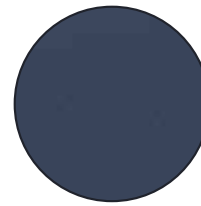
8 10099 40371 8



#3554 • Grey



8 10099 40372 5



#3555 • Navy



8 10099 40373 2



SKYLER GARMENT BAG

24" x 24.75" x 1.75"



#3557 • Black



8 10099 40375 6



#3558 • Grey



8 10099 40376 3



#3559 • Navy



8 10099 40377 0



#3556 • Olive



8 10099 40374 9

SKYLER SINGLE WINE BAG

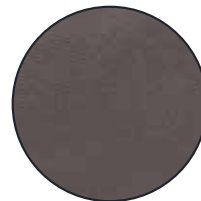
4" x 4" x 12.75"



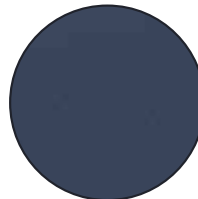
#3560 • Olive



#3561 • Black



#3562 • Grey



#3563 • Navy



SKYLER DOUBLE WINE BAG

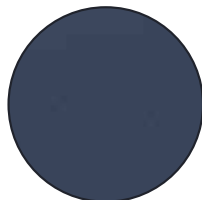
8.25" x 4" x 12.75"



#3565 • Black



#3566 • Grey



#3567 • Navy



#3564 • Olive



MORRISON

COLLECTION

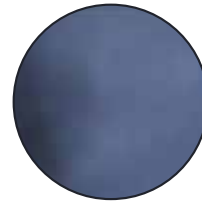


MORRISON GARMET BAG

Closed: 21.5" x 18.5" x 1.75"
Open: 43" x 18.5" x 0.9"

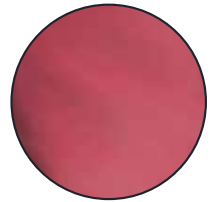


#3568 • Charcoal
8 10099 40386 2



#3569 • Navy

8 10099 40387 9



#3570 • Burgundy

8 10099 40388 6



#3571 • Black

8 10099 40389 3

MORRISON WEEKENDER BAG

21.5" x 14" x 9.75"

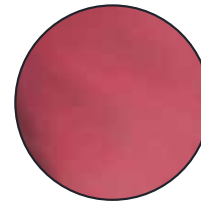


#3572 • Charcoal
8 10099 40390 9



#3573 • Navy

8 10099 40391 6



#3574 • Burgundy

8 10099 40392 3



#3575 • Black

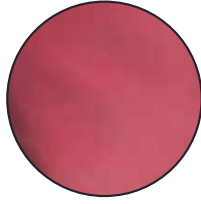
8 10099 40393 0

MORRISON TOILETRY BAG

10.5" x 4.5" x 7"



#3577 • Navy



#3578 • Burgundy



#3579 • Black



#3576 • Charcoal



MORRISON DUFFEL BAG

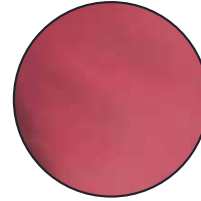
19" x 7.5" x 15"



#3583 • Black



#3581 • Navy



#3582 • Burgundy



#3580 • Charcoal



MORRISON BRIEFCASE WHEELED TROLLEY

14" x 8.5" x 19.5"

#3599 • Black



#3596 • Charcoal



#3597 • Navy



#3598 • Burgundy



MORRISON SINGLE WINE BAG

4" x 4" x 12.75"



#3584 • Charcoal



#3585 • Navy



#3586 • Burgundy



#3587 • Black



NYLON

MORRISON DOUBLE WINE BAG

8.25" x 4" x 12.75"



#3588 • Charcoal



#3589 • Navy



#3591 • Black



#3590 • Burgundy



WATER
RESISTANT



NICO PICKLEBALL BAG

14" x 6" x 13"

#3592 • Blue



#3593 • Black



ARIA PICKLEBALL BAG

14" x 6" x 13"



#3594 • Teal



#3595 • Berry



PERFORATED
NEOPRENE



THE CAPRI SLING BAG

9" x 5.5" x 2.25"

CANVAS



#3462 • Black



#3463 • Brown



HUDSON SLING BAG

16" x 6.25" x 1"

WATER
RESISTANT



#3114 • Black



#3115 • Brown



#3116 • Hunter Green



#3117 • Blue



#3121 • Grey



VERA TRAVEL JEWELRY ORGANIZER
6.25" × 4.25" × 2.25"

VELVET



#3495 • Navy



#3496 • Emerald Green



#3497 • Black



#3498 • Berry



#3499 • Grey



#3500 • Rose



#3501 • Silver



#3502 • Ivory

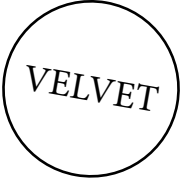


#3503 • Sage





VERA TRAVEL JEWELRY CASE WITH POUCH
5" x 5" x 4"



Detachable Snap Pouch.



#3504 • Sage



#3505 • Ivory



#3506 • Silver



#3507 • Rose



#3508 • Berry



#3509 • Black



#3510 • Emerald Green



#3511 • Grey



#3512 • Navy





LEAH TRAVEL JEWELRY CASE WITH POUCH
5" x 5" x 4"

VEGAN
LEATHER

Detachable Snap Pouch.



#3513 • Pale Pink



#3514 • Light Grey



#3515 • Gold



#3516 • Black



#3517 • Silver



#3518 • Pearl White



#3519 • Pink



LEAH TRAVEL JEWELRY ORGANIZER
6.25" × 4.25" × 2.25"

**VEGAN
LEATHER**



#3520 • Gold
8 10099 40344 2

#3521 • Pale Pink
8 10099 40345 9



#3522 • Light Grey
8 10099 40346 6

#3523 • Black
8 10099 40347 3

#3524 • Silver
8 10099 40348 0



#3525 • Pearl White
8 10099 40349 7

#3526 • Pink
8 10099 40350 3

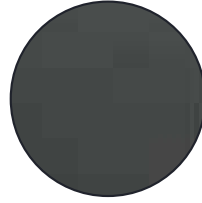
NOLEN TRAVEL JEWELRY CASE

6.75" x 4.75" x 2"

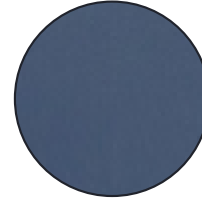
VEGAN
LEATHER



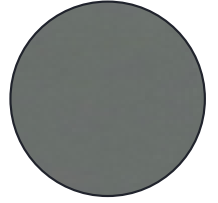
#3602 • Chocolate



#3600 • Black



#3601 • Navy



#3603 • Grey

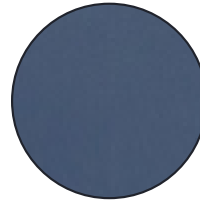


NOAH TRAVEL JEWELRY CASE

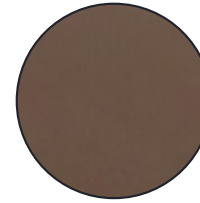
5" x 3.75" x 3.25"



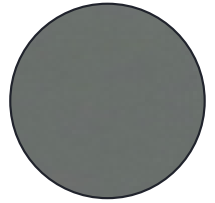
#3608 • Black



#3609 • Navy



#3610 • Chocolate



#3611 • Grey

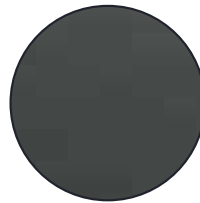


MILES TRAVEL JEWELRY CASE

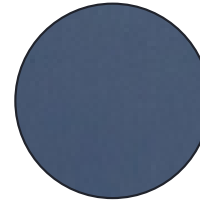
9.25" x 6.25" x 2"



#3607 • Grey



#3604 • Black



#3605 • Navy



#3606 • Chocolate

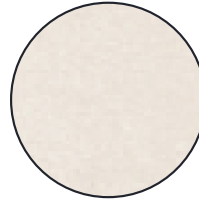


ABBY JEWELRY & COSMETIC CASE

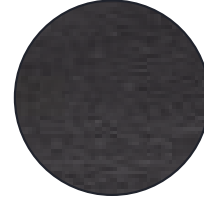
9" x 6" x 4.75"



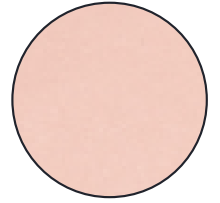
#3613 • Gold



#3612 • Pearl White



#3614 • Black



#3615 • Pink



CHASE CREDIT CARD HOLDER

3.75" x 2.50" x 5"



#3464 • Pearl White



#3465 • Pink



#3466 • Rose Gold



#3467 • Silver



#3468 • Gold



ASHER BIFOLD MONEY CLIP WALLET

4" x 2.75" x .5"



#3480 • Black



#3481 • Navy



#3482 • Brown



#3483 • Grey



#3484 • Burgundy



#3485 • Hunter Green



VEGAN
LEATHER
&
RFID
PROTECTED



#3486 • Black



#3491 • Hunter Green



ASHER MAGNETIC MONEY CLIP CARD CASE

4.25" x 3" x .25"



#3487 • Navy



#3488 • Brown



#3489 • Grey



#3490 • Burgundy



28 PIECE FIX-IT KIT
8" x 6" x 2"



#3529 • Black



#3530 • Grey



#3531 • Navy



#3532 • Fuchsia



#3533 • Gold



#3534 • Brown



ELLIS 3-IN-1 FAST CHARGING FOLDABLE PAD

Case: 4.5" x 3.75" x 2.25"

Pad Open: 11.5" x 3.25" x 0.25"

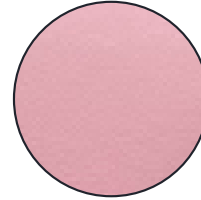
Pad Closed: 3.25" x 3.25" x 0.75"



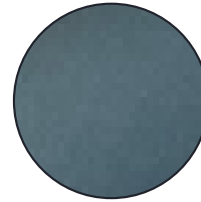
#3617 • Saddle



#3616 • Black



#3618 • Pink



#3619 • Teal



LUX 3-IN-1 FAST CHARGING VALET

Valet: 12.5" x 10.25" x 1.5"

Charging Pad: 9.8" x 10.25" x 1.5"

Removeable charging pad.



#3528 • Tan



#3527 • Black



GENUINE
LEATHER

CAIN CROCO CIGAR TRAVEL CASE

8" × 5.75" × 2.5"

#3476 • Brown



DEAN CROCO CIGAR TRAVEL HUMIDOR CASE

8" × 4.5" × 3"

#3477 • Brown



GENUINE
LEATHER



GENUINE
LEATHER

SIMON STINGRAY CIGAR CASE

7.5" × 4" × 1.5"

#3478 • Black



DEVON CROCO CIGAR TRAVEL CASE

8" × 5.25" × 2.5"

#3479 • Black



GENUINE
LEATHER

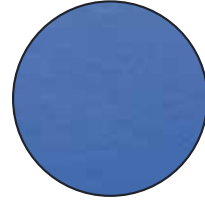


ELLEN POKER CARD SET

20.5" x 10.5" x 7.5"



#3470 • Teal



#3471 • Blue



ELLEN BACKGAMMON SET

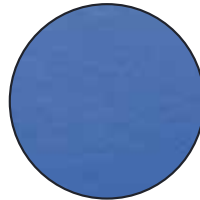
22" x 14" x 16"



#3472 • Teal



#3473 • Orange



#3474 • Blue



ELLEN RUMMIKUB SET

18" x 15" x 10.5"



#3475 • Teal



PUSHERS INCLUDED

MAHJONG SET

21.5" x 10.75" x 3.5"



#2879 • Pink
8 14620 02670 4

#2880 • Blue
8 14620 02671 1

#2782 • Black Croc
8 14620 02555 4

MEXICAN TRAIN DOMINOES SET

14.5" x 9.25" x 2.75"



ARCYLIC TRAIN HUB

#3492 • Pink
8 10099 40310 7



#3493 • Silver
8 10099 40311 4



#3494 • Blue
8 10099 40312 1

VEGAN LEATHER

ROWAN TRAVEL BRIDGE CARD SET

Open: 6.5" x 15.75" x 0.5"
Closed: 6.5" x 5.25" x 1"



#3415 • Black
8 10099 40221 6



#3416 • Silver
8 10099 40222 3



#3419 • Blush
8 10099 40225 4



#3420 • Blue
8 10099 40226 1

ROWAN TRAVEL CHESS ROLL

Open: 10" × 2" × 15"
Closed: 10" × 2" × 3.5"



#3411 • Black



#3412 • Silver



#3413 • Blush



#3414 • Blue



VEGAN
LEATHER

ROWAN TRAVEL BACKGAMMON ROLL

Open: 15.5" × 10"
Closed: 10" × 2"



#3423 • Black



#3424 • Silver



#3458 • Blush



#3459 • Blue

