

Camber Steady Plus Progressive

“The most technologically advanced progressive lens tailored for you”



Camber



Spatial Vision



Eye Focus Profile



Ray Tracing



Binocular Vision



Visual Stability



Lifestyle



Fitting Configuration

All-Purpose Progressive

**Easy to adapt.
Easy to wear.**

83% of wearers reported
EASIER ADAPTATION



★ These principles underpin IOT's cutting-edge lens optimization technologies, Camber Technology, IOT Digital Ray-Path 2 Technology and Steady Plus Methodology.

iot

See the difference

Camber Steady Plus Progressive

Camber Steady Plus Progressive lenses adapt to the demands of modern life. Their technology meets the visual needs of the most active presbyopes, who demand **clear and stable vision**, even when they're engaged in highly dynamic activities.

- Superior visual acuity and unbeatable aesthetics for plus lenses
- Improved quality of vision in the near zone
- Precise and comfortable focus for all working distances in any direction of gaze
- Near elimination of peripheral blur
- Superior visual quality for viewing digital devices
- Higher image stability for reduced swim effect
- Better performance in binocular vision at near and intermediate

Ground breaking technology



Camber

100%

Wearers reported **NEAR ZONE EASIER TO FIND**

94%

Wearers reported **BETTER NEAR VISION QUALITY**

Dual-sided lens with extra-large visual zones for unbeatable optics and aesthetics.

“Unparalleled vision, especially in the near zone”

Pushing the boundaries of free-form technology, the lens's special geometry **enables wider fields of view and sharper vision, especially in the reading zone.**

The variable base curve achieves a better balance between visual quality and lens thickness, particularly for high prescriptions.

This results in lenses with **the highest level of visual comfort and clarity, particularly for reading and other close-up activities.**

The best visual acuity in the near zone.

With a patented base curve, ideal for the increasing power profile of a progressive lens.



WITHOUT CAMBER TECHNOLOGY



WITH CAMBER TECHNOLOGY



Spatial
Vision

99.5%

of gaze directions are
now optimized

Use of accommodation for improved spatial vision and super dynamic vision.

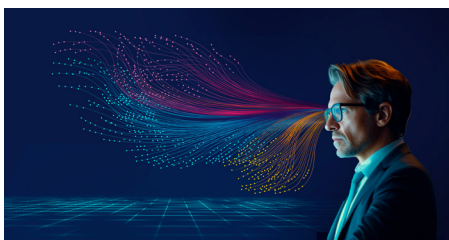
“Naturally good vision, even when you're on the move”

Spatial Vision Technology **optimizes the eye's ability to focus on near and far objects, providing unparalleled sharpness perception and extended focus areas.**

This technology ensures that wearers experience clear and sharp vision, even in dynamic environments where objects are constantly changing distances from the eye. It enables **smooth and rapid transitions across visual zones**, especially when looking down to focus on nearby objects.



WITHOUT SPATIAL VISION TECHNOLOGY



WITH SPATIAL VISION TECHNOLOGY



Eye Focus
Profile

Eye Focus profiling for flawless vision.

“Flawless vision from any angle”

Eye Focus Profile Technology maximizes the clear viewing area and significantly reduces perceived blur in the peripheral areas of the lens, achieving an **absolute reduction in defocus and increasing the visual performance of the lenses.**



Ray
Tracing

Optimum vision across the entire lens.

“Say goodbye to head tilting in search of the exact spot – regardless of distance and direction of gaze”

Thanks to point-by-point optimization over the entire lens surface, Ray Tracing Technology provides **precise vision at every distance and in every direction of gaze.** Wearers enjoy a more natural visual experience.



Binocular
Vision

Overlap in perception for a single visual image.

“Perfect synchronization between your eyes”

Wearer experiences a **comfortable and balanced vision**, with optimal performance **for all activities.** This technology enables clear image and vision, regardless of any difference in prescriptions for both lenses.



Visual
Stability

Attain perfect vision stability, always.

“Exuding confidence while on the move”

Visual Stability Technology **significantly reduces the swim effect when moving.** This virtually eliminates image distortions and enhances image stability, providing the wearer with a **comfortable and clear vision experience.**



Lifestyle

Four custom-designed options that adapt to the changing vision needs of wearers at every stage of their lives and lifestyles.



Balance Vision



Designed for **active and demanding presbyopes**, whether experienced or new progressive lens wearers.



Near Vision



Option with **wider near zone**, ideal for reading, crafting or other activities that involve focusing on objects close at hand.



Distance Vision



Option with **panoramic distance zone**, ideal for active and outdoor lifestyles. Suitable for experienced or new progressive lens wearers.



Intermediate Vision



Softer design with a wider intermediate zone, ideal for new presbyopes or wearers who have experienced difficulties with other progressive lenses.



Fitting Configuration

Fitted perfectly to you

→ Individual Fit

Optimizes the vision zones based on the unique data of the wearer, including their prescription, facial morphology, frame shape, and use position.

→ Frame Fit

Optimizes lens performance in any frame by compensating for the unique parameters of the frame.

→ Lens Fit

Optimizes the aesthetic appearance of the lens by utilizing the optimal base curves and thinning prism, resulting in the thinnest possible lenses, even with a high prescription.

Contact us

368 Freedom Lane, Atwater, California, 95301
Tel: 209-357-9811
www.visioneye.com

Distributed

by:



VISIONEYE
SLOGAN GOES HERE