

OFFICE READER II

OCCUPATIONAL DESIGN

An occupational lens that
enhances intermediate
and near vision.



OFFICE READER II

Provides comfort and natural ergonomic posture at near and intermediate distances.

Office Reader II is an **occupational lens for intermediate and near distances** that really brings visual comfort to the user. The step between fields is more dynamic offering greater agility to change the focus to different distances, especially when working with digital displays.

MORE RELAXED EYES AT THE END OF THE DAY

Single Vision lenses lack near and intermediate zones and progressive lenses have a reduced intermediate zone. **Neither solution is favored by presbyopes** because visual comfort may be compromised and it takes a huge effort to focus.

Now with Office Reader II, presbyopes can work comfortably. **The near and intermediate vision regions cover the entire surface of the lens**, ensuring wider optimized areas. In addition, the soft design guarantees easy adaptation and unbeatable comfort.

4 VISION RANGES TO ADDRESS THE USER'S NEEDS.

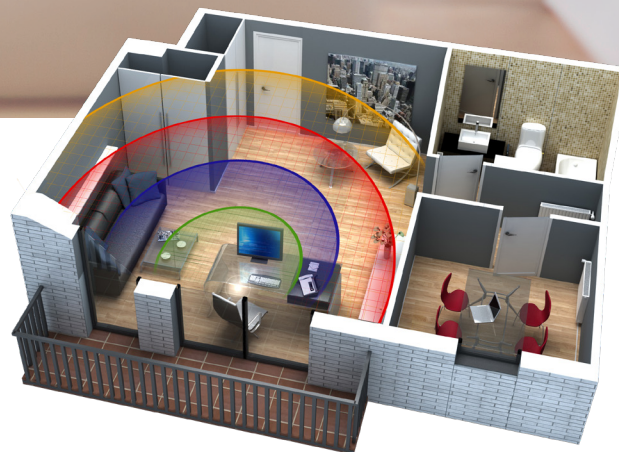
Office Reader II offers 4 vision ranges to cover all of the patient's needs. Ask your patient what working distance is needed to focus comfortably so you can prescribe one of the 4 options.

● Office Reader II 1.3m
Clear vision up to 1.3 m

● Office Reader II 2m
Clear vision up to 2m

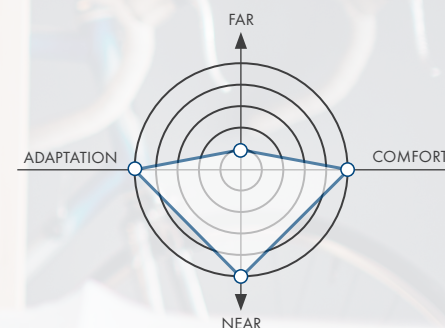
● Office Reader II 4m
Clear vision up to 4m

● Office Reader II 6m
Clear vision up to 6m



SMART ADD TECHNOLOGY ALLOWS THE EYES TO BE RELAXED WHEN VIEWING SCREEN DISPLAYS

Office Reader II incorporates Smart Add, the technology that improves the patient's visual experience when using digital devices. This technology assists with changes in focus at different working distances in a more agile and accurate way when the patient is working or reading simultaneously with different screens.



TARGET MARKET

Wearers aged 45 and up performing near and intermediate tasks, depending on their visual range needs:

- Computer screen
- Tablet/Smartphone
- Reading
- Painting
- Cooking
- Gardening



Smart Add



Near vision



Enhanced for computers



Not for driving

CONSUMER ADVANTAGES

Office Reader II is designed to be used as a second pair of glasses for presbyopes who perform activities at near or intermediate distances and need wider vision fields than a standard progressive lens can offer.

REDUCED VISUAL FATIGUE

More relaxed eyes.

IMPROVED DESIGN

Softer design compared to the last version with noticeably reduced swim effect and lateral distortion

FASTER ADAPTATION

The adaptation to this lens practically immediate.

IMPROVED FOCUS

Better ability to read text on digital displays.

DYNAMIC VISION

Easy and agile switch from the near to intermediate zone.

NATURAL POSITION

Ergonomically comfortable

HOW TO PRESCRIBE OFFICE READER II

PROVIDE THE FOLLOWING DATA:

- Distance correction and addition power
- Range of Office Reader
- Calculation technology (Digital Ray-Path® or Surface Power®)
- Nasopupilar distance
- Frame data
- Fitting height

All other personalization parameters are optional (pantoscopic angle, wrap angle, back vertex distance and near working distance).

LENS AVAILABILITY

Office Reader II 1.3m – Clear vision from 40 cm to 1.3 m

Office Reader II 2m – Clear vision from 40 cm to 2.0 m

Office Reader II 4m – Clear vision from 40 cm to 4.0 m

Office Reader II 6m – Clear vision from 40 cm to 6.0

m

MINIMUM FITTING HEIGHT

14mm and 18mm

PLEASE NOTE

Available in Digital Ray-Path® or Surface Power® technologies.

Caution: Do not drive with these lenses because they do not provide distance vision.

MOUNTING INSTRUCTIONS

For proper positioning of the lens in the frame, the invisible engravings must be considered. The fitting cross should be aligned with the center of the pupil. Use the laser marks for verification.



C/ Suero de Quiñones 34-36, 3º, 28002 Madrid, España.
www.iot.es / www.digitalray-path.com