



THE ILLUMINATED NAIL CLIPPER

**For helpful tips and tricks and to purchase additional blades please visit: [PeticareTips.com](http://PeticareTips.com)**

©2018 APG All Rights Reserved.  
Peticare™ is a trademark of APG

Distributed by Allstar Products Group, Hawthorne, NY 10532  
Product Color and Appearance may vary  
Made in China



THE ILLUMINATED NAIL CLIPPER

## INSTRUCTION MANUAL

**For helpful tips and tricks and to purchase additional blades please visit: [PeticareTips.com](http://PeticareTips.com)**

## Important Safety Instructions

**Read all instructions in this manual before use.**

- Use this product only for its intended use as described in this manual.
- Do not allow children to use this product.
- If any part of the Peticare™ appears to be damaged or malfunctioning, discontinue use immediately.

### **Caution: Sharp Blades!**

- Take caution when changing the blades.

## Cleaning and Storage

Clean with a damp cloth and dry off. Always keep the unit dry and store out of reach of children.

**1** Caution when cleaning: Blades are sharp.

### **BATTERY WARNINGS:**

- Do not mix old and new batteries.
- Do not mix alkaline, standard (carbon-zinc), or rechargeable (nickel-cadmium) batteries.
- Batteries must be inserted with the correct polarity.
- The supply terminals are not to be short-circuited.
- Remove batteries if the item will not be used for an extended period of time.
- Non-rechargeable batteries are not to be recharged.
- Only batteries of the same or equivalent type as recommended are to be used.
- Exhausted batteries should be removed from the item.

## Replace the Batteries



Unscrew the battery compartment door clockwise by rotating your hand or a flathead screwdriver.



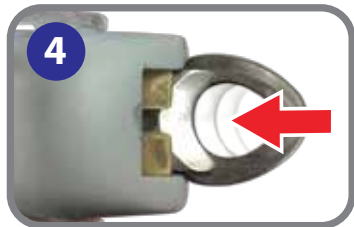
Remove the battery sleeve within the container and 3 LR44 batteries. Replace them with new batteries following the polarity indicated. Replace the cover by rotating it counter-clockwise until closed.

**NOTE: To ensure long lasting battery life, keep the light switch in the OFF position (centered) while storing.**

## Replace the Blades



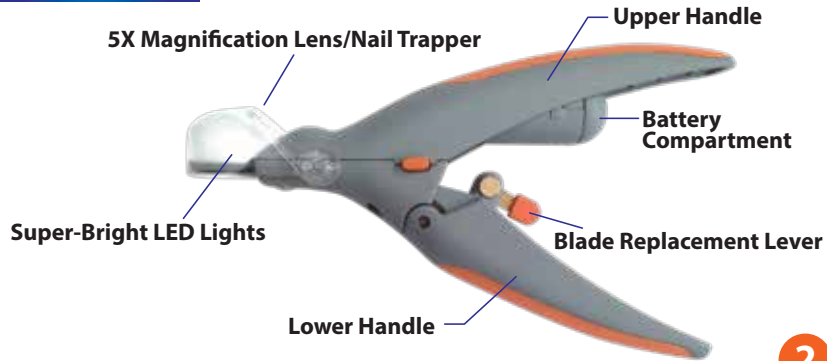
While holding the lever up, use a pen or paper clip to insert into the hole of the blade and slide the blade outwards.



While the lever is held upward, slide a new blade into the slot completely. Release the lever and gently squeeze the handles together. The blade will lock into place.

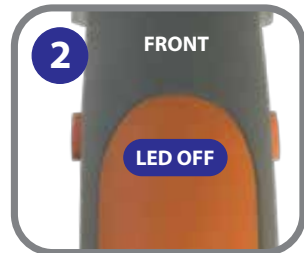
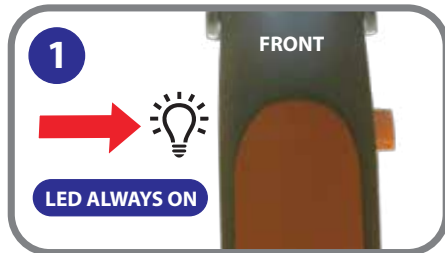
9

## Features



2

## Using the Light

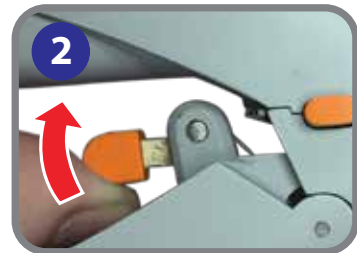


**3** LED lights illuminate the cutting area to help see while cutting. On light and medium colored nails, the LED will also help illuminate the pet's quick to better identify the proper cutting location. For dark nails, the LEDs may not be powerful enough to see the quick.

## Replace the Blades



Raise the magnifier hood upwards so that the blade is exposed.



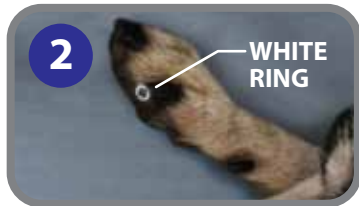
Lift and hold the orange blade replacement lever, located in between the handles.

**8**

## Cutting Black/Dark Dog Nails



If your dog has dark nails and you can't see the quick, cut a little at a time.



When you see a white ring with a small black center, stop.

## Using the Light



## Cutting Instructions

Before cutting, make sure that the LED switch on the Peticare™ is switched to either the **ON** or the **TRIGGER** position. This will help identify the quick of the nail clearly on light/colored nails.



**5** Hold the Peticare™ trimmer using your dominant hand with the upper handle in your palm.

## Cutting Instructions

**NOTE: For best results, do not hesitate while trimming.**



When using the Peticare™ trimmer, insert the pet's nail through the fixed circular blade into the clipping zone.



**1. While trimming your pet's nails, make sure you do not cut into the quick of the nails.**

**2. Use an abrupt, snapping motion while trimming.**

**6**