



Casa da Bela Vista

**YOUR DREAM HOME AWAITS IN
SOUTO DA CASA, PORTUGAL**



Casa da Bela Vista



Nestled between two iconic mountain ranges, Casa Da Bela Vista stands as a testament to serene living and architectural elegance.

With a collection of four exquisite apartments, each dwelling offers its residents mesmerizing vistas of the Serra da Estrela.

CONTACT US

+351920124421

connect@vwfraser.com

www.vwfraser.com

EXTERIOR VIEWS

Each residence at Casa Da Bela Vista, boasts of breathtaking views, modern amenities, and a seamless blend of comfort and elegance. Designed to provide a tranquil oasis, these apartments offer an escape to a world of sophistication and natural beauty, where every detail reflects the charm and character of Portugal's stunning landscapes.

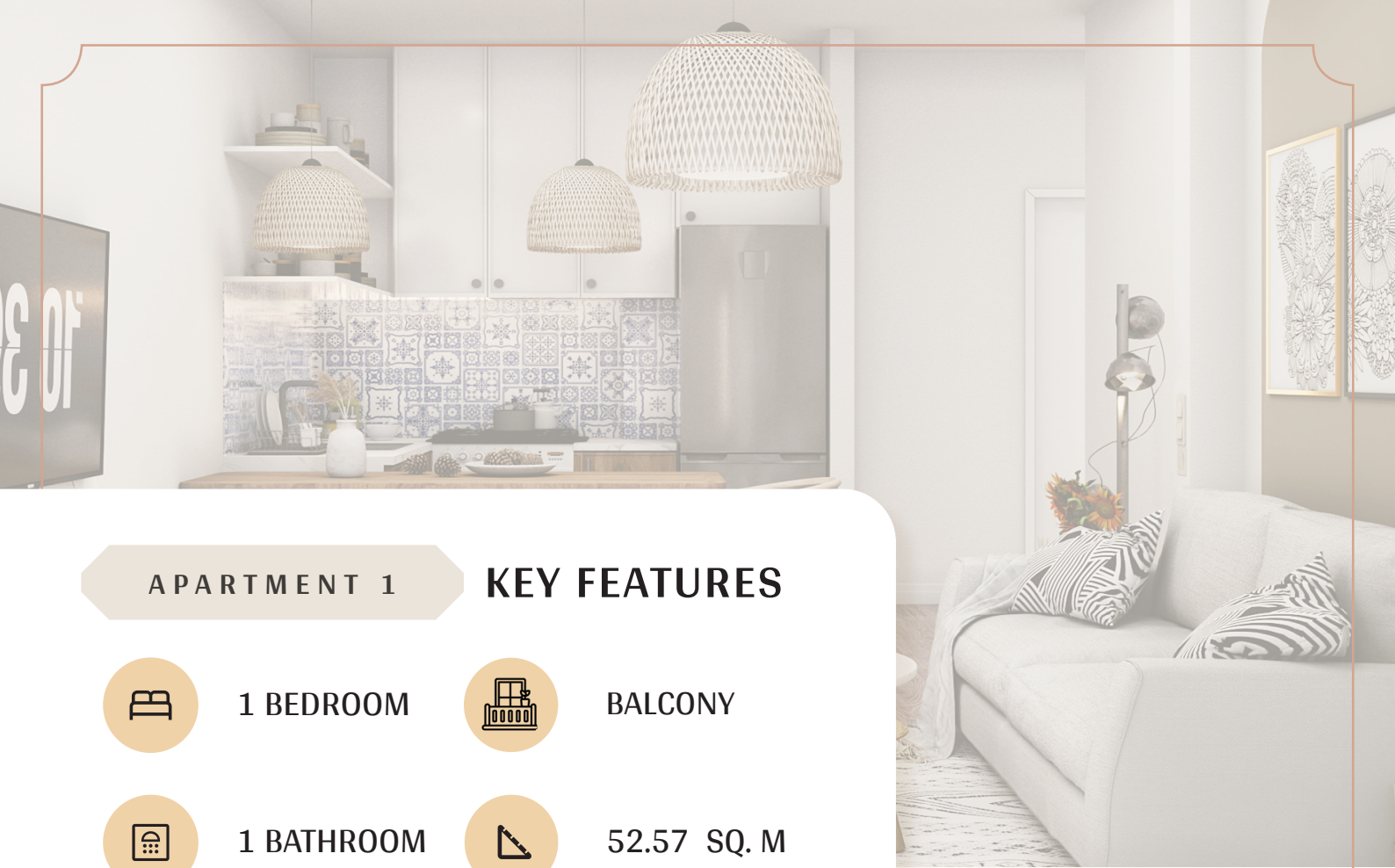


CONTACT US

+351920124421

connect@vwfraser.com

www.vwfraser.com



APARTMENT 1

KEY FEATURES



1 BEDROOM



BALCONY



1 BATHROOM

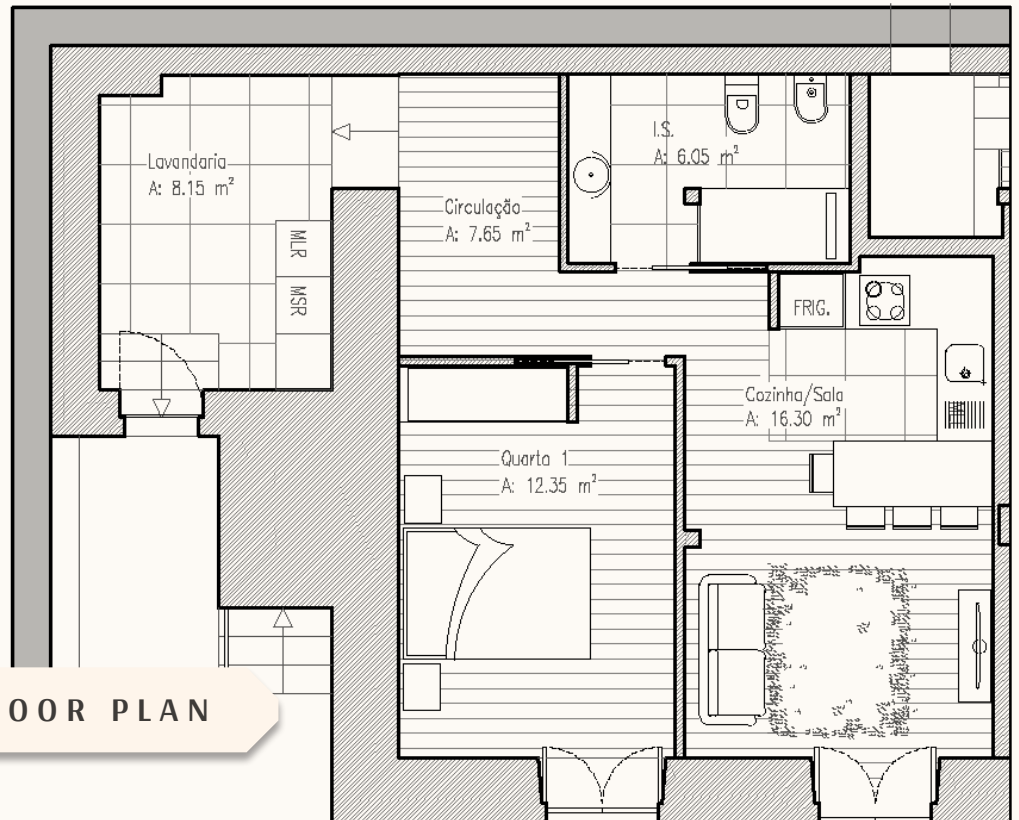


52.57 SQ. M



A cozy apartment within Casa Da Bela Vista. Representing an ideal blend of style and practicality, this space awaits your personal touch, to become the home of your dreams in the delightful Souto da Casa, Portugal.

FLOOR PLAN



CONTACT US

+351920124421

connect@vwfraser.com

www.vwfraser.com



LIVING/DINING AREA & KITCHEN (16.30 Sq.m)

Step into the heart of the apartment, into an open and airy space designed with a modern lifestyle in mind. This combined area is graced with beautiful wooden flooring that adds a touch of warmth and elegance, complementing the neutral color palette. Large windows ensure the space is bathed in natural light, providing an inviting atmosphere for both relaxation and entertainment.

CONTACT US

+351920124421

connect@vwfraser.com

www.vwfraser.com



B E D R O O M (1 2 . 3 5 S q . m)

The bedroom is a cozy retreat from the bustle of daily life, designed to maximize comfort and tranquility. Built-in cupboards provide generous storage space, keeping the room organized and serene.



B A T H R O O M (6 . 0 5 S q . m)

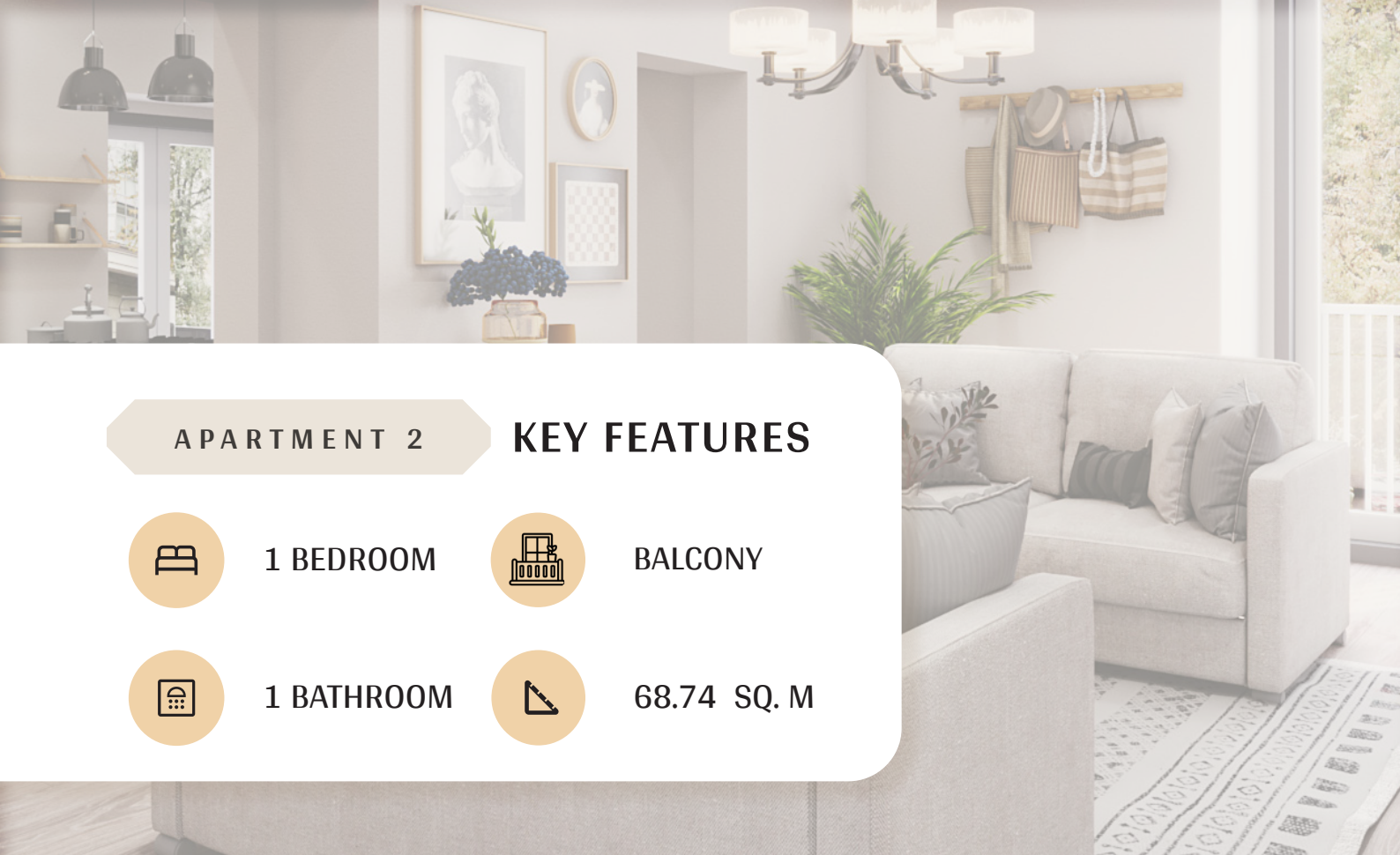
Elegance meets functionality in the bathroom, where clean lines and modern fixtures create a refreshing space. The room features stylish tiling and is configured to accommodate your preferred bathroom fittings.

CONTACT US

+351920124421

connect@vwfraser.com

www.vwfraser.com



APARTMENT 2

KEY FEATURES



1 BEDROOM



BALCONY

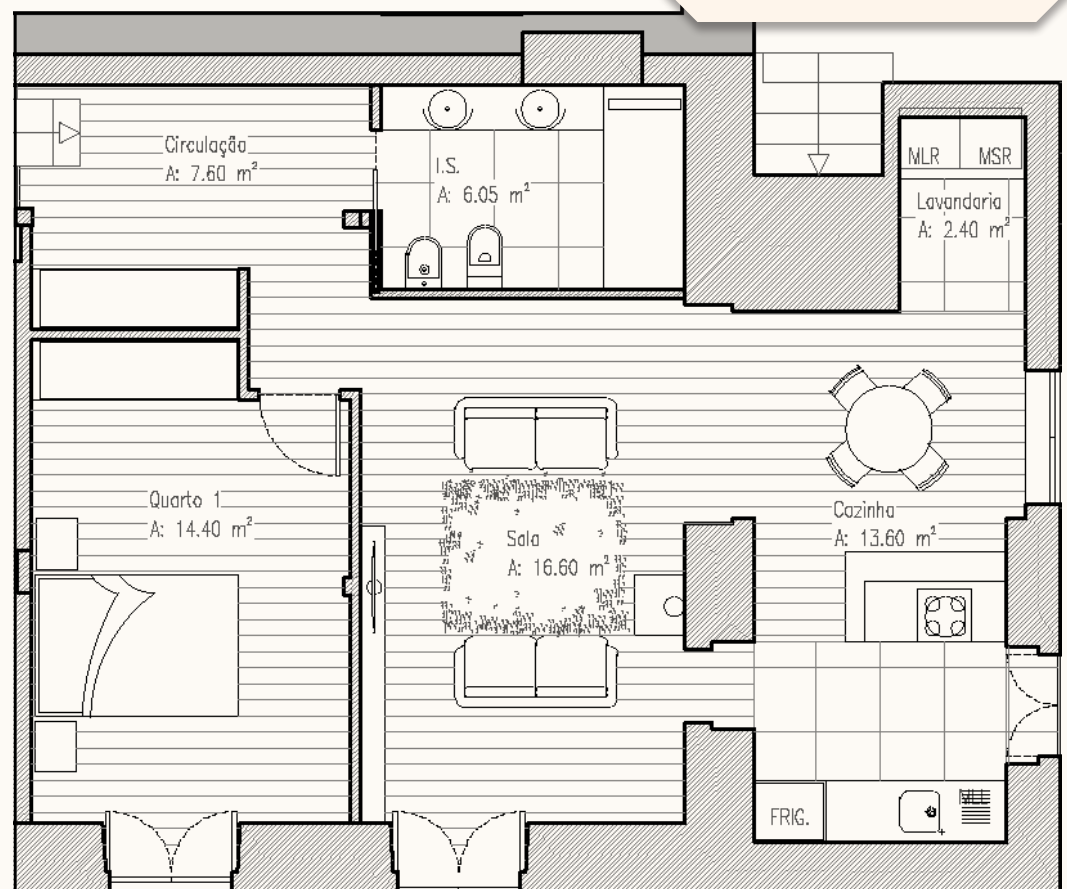


1 BATHROOM



68.74 SQ. M

FLOOR PLAN



In the heart of Portugal, awaits an apartment that perfectly marries chic design with everyday functionality. This space is a blank canvas, inviting you to imprint your unique flair and transform it into the living space you've always envisioned.

CONTACT US

+351920124421

connect@vwfraser.com

www.vwfraser.com



**LIVING ROOM (16.60 Sq.m)
DINING AREA + KITCHEN (13.60 Sq.m)**

The living room is a statement of sophisticated design and comfort. Its spacious layout invites you to create a living area that echoes your personal style. Wooden floors offer warmth and a timeless look, while the room's generous dimensions provide a versatile canvas for your furnishing ideas. Ample natural light brings a bright and airy feel to the space, perfect for relaxing or entertaining.



B E D R O O M (1 4 . 4 0 S q . m)

Step into the master bedroom, a haven designed for rest and rejuvenation. The clean lines create a calming atmosphere, accentuated by the natural light that floods in through generous windows. Practicality meets elegance with the sleek built-in wardrobes, offering ample storage without compromising on style.



B A T H R O O M (6 . 0 5 S q . m)

The bathroom is a fusion of modern aesthetics and practicality. With chic tiling underfoot and a spacious walk-in shower, the design prioritizes ease of use and visual appeal. The bathroom is ready to be personalized with fixtures and accessories, making it an ideal space for refreshing and preparing for the day ahead.

APARTMENT 3

KEY FEATURES



1 BEDROOM



BALCONY



STUDY



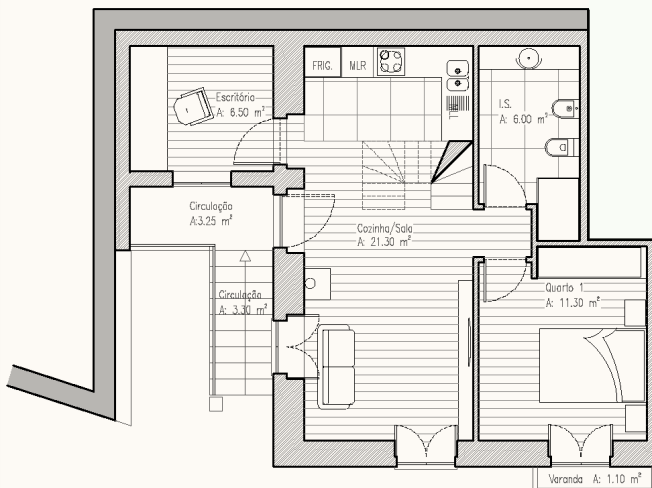
1 BATHROOM



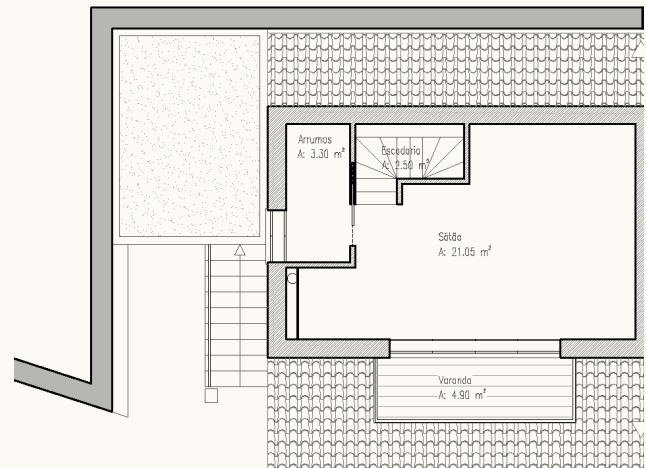
75.94 SQ. m

FLOOR PLAN

A beautiful one bedroom residence with a spacious living and dining area, bathroom, a dedicated study, and attic space. This apartment also has a beautiful balcony offering residents a private outdoor retreat.



FIRST FLOOR



SECOND FLOOR

CONTACT US

+351920124421

connect@vwfraser.com

www.vwfraser.com



LIVING / DINING AREA (21.30 Sq.m)

This apartment opens into a spacious living area, where each corner is a prospect for personal expression. The wooden floors breath both beauty and durability, flowing seamlessly into a kitchen space that includes built-in cupboards for a tidy and integrated look. This area is designed for both relaxation and social dining, with ample space for you to customize with your furnishings.



B E D R O O M (1 1 . 3 0 S q . m)

Experience tranquility in this spacious bedroom. It features a built-in wardrobe for effortless organization and wooden flooring that adds a touch of natural warmth. The large windows fill the room with soft, natural light, creating an inviting and calm atmosphere.



B A T H R O O M (6 . 0 0 S q . m)

Designed with functionality in mind, the bathroom is a space that is ready to be fitted with your chosen fixtures and features built-in storage solutions, all complemented by sleek tiling that awaits your finishing touches.

CONTACT US

+351920124421

connect@vwfraser.com

www.vwfraser.com



STUDY (6 . 5 0 S q . m)

The study is a dedicated space designed for focus and creativity. Come and personalize it to suit your needs. The natural light from the window offers a bright and motivating environment. This study is an invaluable addition to the contemporary living experience.



ATTIC (2 1 . 0 5 S q . m)

This cozy nook, with its sloping ceilings and wooden floors, offers an adjustable area that can be transformed into a relaxing lounge, a creative studio, or an intimate retreat. The architectural details, such as the angled walls and recessed lighting, add character and a sense of spaciousness, making it an ideal spot for quiet contemplation or simply enjoying a panoramic view from the top of your home.

CONTACT US

+351920124421

connect@vwfraser.com

www.vwfraser.com

APARTMENT 4

KEY FEATURES



1 BEDROOM



BALCONY



STUDY



1 BATHROOM



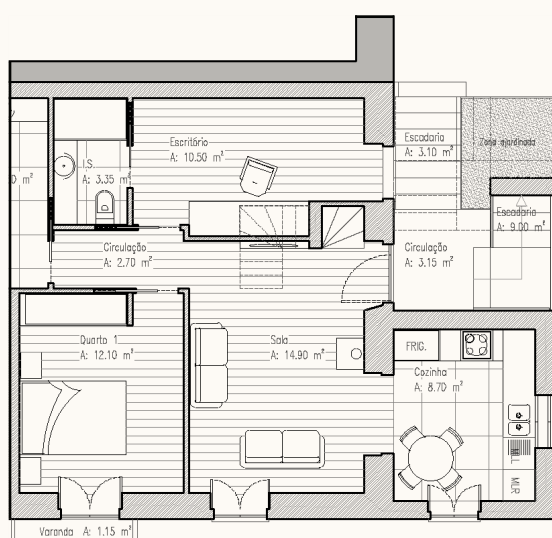
86.56 SQ. M



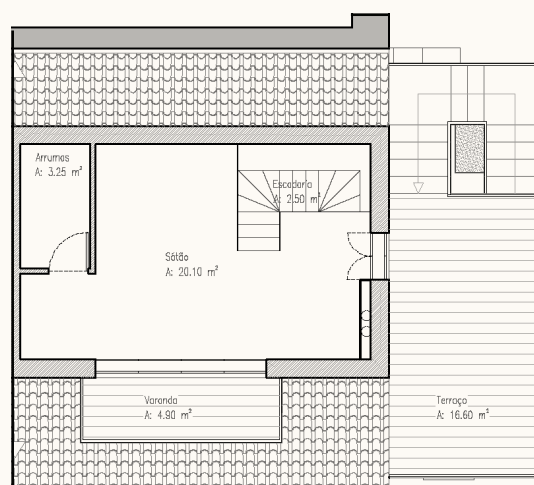
TERRACE

FLOOR PLAN

Embrace the unique charm of contemporary living with this beautifully designed one-bedroom apartment. This is a space where structure and potential meet, creating a perfect canvas for your life to unfold.



FIRST FLOOR



SECOND FLOOR



LIVING/DINING AREA (14.90 Sq.m) (8.70 Sq.m)

The open-plan living and dining area is a bright and versatile space, designed for seamless interaction and entertainment. The wooden floors add continuity and flow, while the ample natural light imbues the room with an inviting ambiance.



STUDY (10.50 Sq.m)

This personal study with an attached toilet, is a tranquil corner of the apartment, ideal for a home office or a quiet reading nook. The natural lighting creates a warm and productive environment perfect for concentration and inspiration.



BED ROOM (12.10 Sq.m)

Welcome to the bedroom, a spacious area offering the quietude and comfort essential for personal retreats. The built-in cupboards provide ample storage, and the pristine wooden flooring enhances the room's natural light, making it a restful place for relaxation and slumber.



BATHROOM (6.60 Sq.m)

The bathroom balances utility and style. It's a space designed with a modern lifestyle in mind, featuring easy-to-clean surfaces and a layout that maximizes both comfort and privacy.



ATTIC (20.10 Sq.m)

Up in the attic, find a unique, multifaceted space that can serve as an additional sleeping area, storage space, or a hobby room. It's a cozy extension of your living space, offering privacy and charm under the eaves.



TERRACE (16.60 Sq.m)

Encircled by delicate railings, the apartment's terrace is a charming retreat, which can be dotted with vibrant petunias that add a burst of color to this peaceful outdoor nook. This space is an idyllic setting for quiet reflection or enjoying the views of the Portuguese mountains and valleys.



Casa da Bela Vista

**YOUR DREAM HOME AWAITS IN
SOUTO DA CASA, PORTUGAL**