



ANDERSON ISLAND HEALTHCARE ADVOCATES

**PROPOSAL TO ANDERSON ISLAND PARKS DISTRICT:
ESTABLISHING THE FIRST-EVER HEALTHCARE CLINIC ON THE ISLAND**

AUGUST 16, 2023

EXECUTIVE SUMMARY

Established as a nonprofit organization in October 2022, Anderson Island Healthcare Advocates (AIHA) is committed to creating a sustainable healthcare infrastructure that will positively impact the community's well-being and development. Our mission is **“to provide compassionate, accessible, whole-person health and wellness services on Anderson Island. We are dedicated to improving quality of life by delivering exceptional primary care, advancing optimal health outcomes, and fostering community engagement.”** This initiative aims to address the critical healthcare gap faced by the island's population, ensuring all residents (and visitors) of our beloved island have direct access to quality medical services without having to leave the island for simple lab tests and/or medical check-ups/appointments/minor urgent care situations.

AIHA Vision

Promoting a healthy and thriving community by empowering individuals to be their best selves.

A critical step in establishing the first-ever clinic on Anderson Island is to secure a location. We understand the Parks District is in negotiations with the Lutheran Church to potentially purchase the property located at 11408 Guthrie Road. A current church member has voiced that the membership does support a clinic at the location. Furthermore, two of our board members have toured the site as well and found that it has great potential to become an island clinic.

Hence, we are pleased to present this proposal for your consideration.

OBJECTIVES

This clinic will function as a vital healthcare hub, serving the island's growing population, especially our seniors. We strive to achieve the following objectives.

- Establish a healthcare clinic that offers primary care and same day walk-in services.
- Provide accessible healthcare services to residents and visitors, irrespective of their socio-economic background. More than 20% of the island's population is living below the poverty line.
- Improve overall community health by focusing on preventive care and health education.
- Collaborate with local healthcare professionals to ensure high-quality medical care is delivered.
- Enhance the island's healthcare infrastructure and contribute to its development.

NEEDS ASSESSMENT

Based on the 2020 Census (see Appendix below), the island's population of permanent residents is growing at a clip pace. The lack of a medical facility poses significant challenges for people who must manage their chronic diseases. Residents have to travel to the mainland via the unreliable ferry system for medical care, even for simple lab tests and prescription needs. A clinic on Anderson Island will offer timely and accessible healthcare services to residents and visitors year round.

PROJECT PLAN

a) Real Estate:

- Identify potential location(s) for the clinic, considering accessibility and building infrastructure.
- Engage in potential negotiations with property owners, local leaders, and legal counsel **to lease a suitable location for the initial clinic.**

b) Facility Development:

- Once a location is identified and secured, retain the services of a healthcare architect to design a clinic that accommodates exam rooms, waiting area, ancillary space, and administrative offices.
- Collaborate with architects and contractors to ensure the construction and/or remodel of an efficient and welcoming facility that meets all HIPAA regulations.

c) Medical Equipment and Staffing:

- Procure medical equipment and technology to offer ancillary and treatment services.
- Recruit a skilled medical team, including doctors/providers, medical assistants, lab technician, and administrative staff.

d) Healthcare Programs

- The Parish Nursing program will continue to deliver health education and awareness initiatives, including workshops, seminars, and outreach programs.
- Collaborate with the Fire Department, Anderson Island Historical Society, the Riviera Community Club, and other key organizations to spread health-related knowledge.

SUSTAINABILITY

To ensure the long-term viability of the clinic, we propose the following strategies:

- Collaborate with state and Pierce County government, private donors, and corporate partners to secure funding for ongoing operations.
- Establish partnerships and contracts with insurance companies to create sustainable revenue streams.
- Implement a fee structure that is affordable for residents while covering operational costs.
- Continuously assess the clinic's impact on the community's health and well-being.

BUDGET

A detailed budget outlining expenses for real estate lease, construction costs, equipment procurement, staffing, and initial operating costs will be provided upon request. We plan to hold fundraising events and submit grants to organizations/agencies that support healthcare initiatives in a rural setting.

CONCLUSION

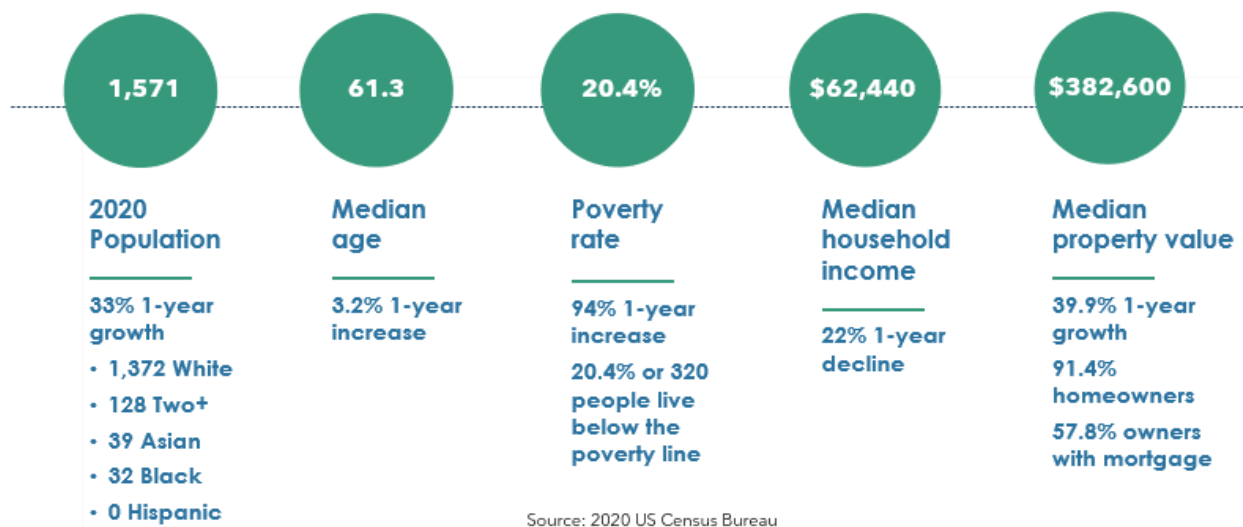
The establishment of the first-ever clinic on Anderson Island represents a significant step towards improving the health and well-being of its residents. Through this initiative, AIHA is creating a lasting legacy for the community while fostering a healthier and more vibrant island. We welcome the opportunity to discuss this proposal further and collaborate with various partners to make this vision a reality. Together, we can build a healthier future for all islanders.

Thank you for your serious consideration. We look forward to hearing from you soon.

Therese Ngo Pasquier | Board President, Anderson Island Healthcare Advocates
253.245.0401 | tnpasquier@gmail.com

APPENDIX

Island Demographics - 2020 Census

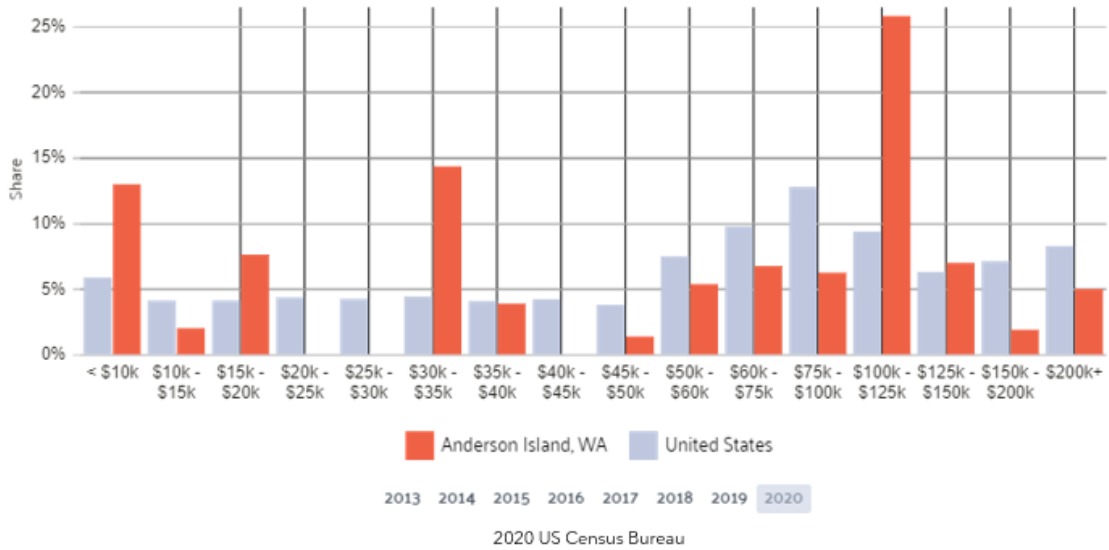


Island Demographics - Health

- 95.9% of the population has health coverage
 - with 26.2% on employee plans
 - 8.15% on Medicaid
 - 23.4% on Medicare
 - 37.4% on non-group plans
 - 0.827% on military or VA plans
- Insured persons based on age ranges
 - 3.76% < 18 years
 - 4.71% between 18 and 34 years
 - 56.8% between 35 and 64 years
 - 34.8% > 64 years
- Total number of insured persons by gender
 - 51.5% men
 - 48.5% women
- Per capita personal health care spending in Washington was \$7,913 in 2014. This is a 4% increase from the previous year (\$7,609).
- Primary care physicians in Pierce County, WA see 1,363 patients per year on average, which represents a 1.16% decrease from the previous year (1,379 patients).

Source: 2020 US Census Bureau

Island Demographics - Income



Proposed Timeline



AIHA Current Board Members



Therese Pasquier

President



Glenn Kasman

Vice President



Lora Barrett

Co-Secretary



Rick Stockstad

Co-Secretary



Diana Fotheringill

Treasurer



Barbie Stockstad

Member | Clinical



Dianne Avey

Member | Clinical



Joseph Wargacki

Member | Clinical